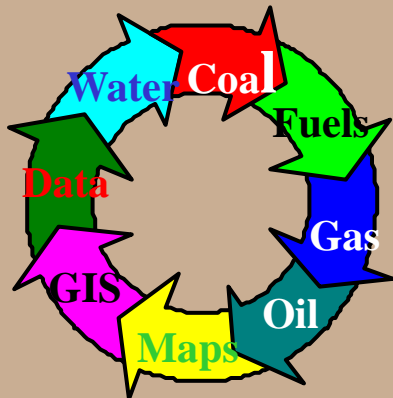


GIS at KGS

Dan Carey -- carey@uky.edu



Kentucky Geological Survey
The University of Kentucky

“Earth Resources—Our Common Wealth”



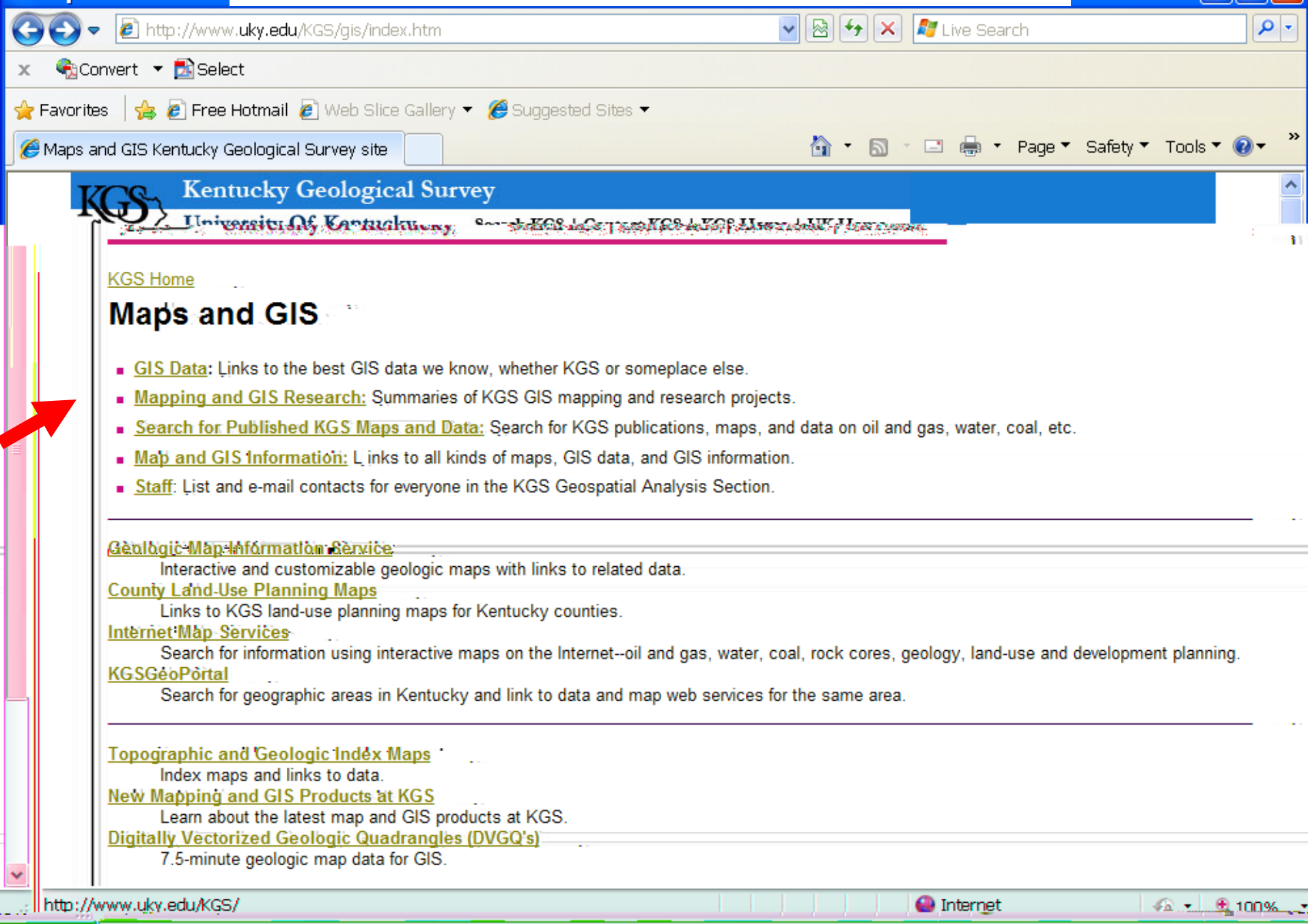
[Www.uky.edu/KGS/](http://www.uky.edu/KGS/)

mcrawford@uky.edu



KGS Research Projects Using GIS

Maps and GIS Ker



http://www.uky.edu/KGS/gis/index.htm

Convert Select

Favorites Free Hotmail Web Slice Gallery Suggested Sites

Maps and GIS Kentucky Geological Survey site

Home RSS Print Page Safety Tools

KGS Kentucky Geological Survey
University Of Kentucky

[KGS Home](#)

Maps and GIS

- [GIS Data](#): Links to the best GIS data we know, whether KGS or someplace else.
- [Mapping and GIS Research](#): Summaries of KGS GIS mapping and research projects.
- [Search for Published KGS Maps and Data](#): Search for KGS publications, maps, and data on oil and gas, water, coal, etc.
- [Map and GIS Information](#): Links to all kinds of maps, GIS data, and GIS information.
- [Staff](#): List and e-mail contacts for everyone in the KGS Geospatial Analysis Section.

[Geologic Map Information Service](#)
Interactive and customizable geologic maps with links to related data.

[County Land-Use Planning Maps](#)
Links to KGS land-use planning maps for Kentucky counties.

[Internet Map Services](#)
Search for information using interactive maps on the Internet--oil and gas, water, coal, rock cores, geology, land-use and development planning.

[KGS GeoPortal](#)
Search for geographic areas in Kentucky and link to data and map web services for the same area.

[Topographic and Geologic Index Maps](#)
Index maps and links to data.

[New Mapping and GIS Products at KGS](#)
Learn about the latest map and GIS products at KGS.

[Digitally Vectorized Geologic Quadrangles \(DVGQ's\)](#)
7.5-minute geologic map data for GIS.

http://www.uky.edu/KGS/ Internet 100%

[KGS Home](#) > [GIS and Maps](#)

GIS and Mapping: Research at KGS

Quaternary Mapping along the Ohio River

KGS geologists, through the [USGS STATEMAP program](#) are mapping Quaternary deposits along and adjacent to the Ohio River to improve existing geologic mapping in the area. These sediments were originally generalized into a small number of mapping units during the geologic quadrangle (GQ) mapping program. Because of the importance for fine-tuning development, engineering, ground water supply, and the potential for ground shaking during earthquakes, providing high-quality geologic maps of these areas is a priority. KGS personnel are working with scientists from other local, state, and federal agencies to complete this mapping and share results. Mapping has thus far concentrated in [Davies](#), [Henderson](#), and [Hancock counties](#); mapping is planned in [Blair](#), [Madison](#), [Perry](#), [Rowan](#), and [Warrick](#) counties. GIS products will include new digital vector geologic quadrangle data sets for these areas. Contact [Drew Andrews](#) for more information.

Karst Mapping in Kentucky

KGS geologists are cooperating with the [Kentucky Division of Water](#) to produce quadrangle maps that show the location of karst springs and the area of the groundwater basins that they drain. Groundwater tracing experiments using fluorescent dyes must be conducted to understand the subsurface drain-age networks. This work requires a sustained effort to map these sensitive karst areas of Kentucky. The resulting maps and [GIS data](#) are an essential tool for land-use planners, conservationists, and developers in this limestone-rich state. Other [GIS maps](#) that show the risk of sinkholes, collapses and flooding hazards are planned. Contact [Jim Cooney](#) for more information.

Land-Use Planning Maps

Digital geologic map data sets provide an opportunity to create derivative products that communicate information about geology to users in other fields. One example is land-use maps that were prepared for community planners, classrooms, homeowners, and other non-geologists. These [county maps](#) are based on geology, but are classified in terms of land use. [Tables](#) provide information about a variety of development issues, and diagrams and photographs illustrate the technical concepts. An interactive [internet map](#) is also available for exploring these data. For more information contact [Dan Carey](#).

Digital Mapping Program

Kentucky is extremely fortunate to have 1:24,000-scale geologic maps for the entire state. These printed maps were prepared during a cooperative project with the U.S. Geological Survey between 1960 and 1978. KGS, with funding from the STATEMAP component of the [National Cooperative Geologic Map Program](#) has completed conversion of 707 geologic maps to digital GIS data sets. Products of this project, which began in 1996, are GIS data sets in ESRI shapefile format (DVGQ), new map compilations at the 1:100,000 scale, county geologic maps, and derivative map products for a variety of applications. An interactive [Internet map service](#) is available for creating custom geologic maps with overlays of KGS site data. For more information about the [digital mapping program](#) contact [Warren Anderson](#).

Finding High-Yield Water Wells Using Remote-Sensing Techniques

KGS geologists are using remote-sensing data in a geographic information system to predict sites with high potential for subsurface groundwater in eastern Kentucky. Much of the well water in this region is associated with subvertical fracture systems. A variety of remote imagery is being used to locate lineament intersections that are potential sites for high-pressure wells. An inclined exploratory drilling method was devised to maximize results for detecting which fractures have greatest water flow. [Digital lineament data](#) are available for eastern Kentucky on CDROM. For more information contact [Jim Dinger](#).

Carbon Sequestration

KGS is participating in three [Regional Carbon Sequestration projects](#) sponsored by the [U.S. Department of Energy](#) to provide information about long term storage opportunities for carbon dioxide emitted from electric power generating facilities. GIS data are collected at an [Internet mapping site](#) that integrates maps and databases from research partners into a single Web portal. The data and maps show information about [potential geologic sequestration targets](#) oil and gas reservoirs, coal beds, and saline aquifers, as well as carbon sources in the region. This project is using novel techniques to integrate the distributed GIS data for research purposes. Contact [Dave Harris](#) for more information.

Kentucky Landscape Maps

KGS personnel have been using GIS data to assist in developing maps of the Kentucky landscape. Visualizing the landscape in different ways is useful for different applications. A new physiographic map of Kentucky is being developed that delineates distinct areas of Kentucky's topography, based on GIS themes of elevation, slope, relief, and geology. A derivative of this effort was incorporated into a new "[Ecoregions Map of Kentucky](#)," a cooperative effort among State and Federal agencies to identify areas of Kentucky with similar ecological management potential. Contact [Drew Andrews](#) for more information.

GIS Data Online



[KGS Home](#)

Maps and GIS

- [GIS Data](#): Links to the best GIS data we know, whether KGS or someplace else.
- [Mapping and GIS Research](#): Summaries of KGS GIS mapping and research projects.
- [Search for Published KGS Maps and Data](#): Search for KGS publications, maps, and data on oil and gas, water, coal, etc.





http://www.uky.edu/KGS/gis/kgs_gis.htm

Live Search

Convert Select

Favorites Free Hotmail Web Slice Gallery Suggested Sites

Geospatial Data Library, Maps and GIS Kentu...

Home RSS Print Page Safety Tools

Kentucky Geological Survey
University Of Kentucky

Search KGS | Contact KGS | KGS Home | UK Home

**Whatever data we
need to do GIS**[KGS Home](#) > [Maps and GIS](#)

Geospatial Data Library

The Kentucky Geological Survey and other state and federal agencies have electronic maps and GIS data that you can download for your use. The KGS GIS data are in ArcView shapefiles (registered by ESRI). The files were zipped using the WinZip utility. All the KGS datasets, unless explicitly noted, are in latitude and longitude, decimal degrees, NAD 83.

- [Kentucky Geography Network](#): Electronic warehouse of maps and GIS data from the Kentucky Geography Network.
- [Map Imagery](#): Scanned, georeferenced topographic, geologic, and other maps.
- [Elevation Data](#): Digital elevation models at various scales.
- [Political and physical boundary data](#): Maps (coverages) showing political boundaries, map indexes, regions, area development districts (ADD's), grids.
- [Geology and Soils data](#): Geologic coverages of the state, oil and gas wells, coal exploration sites.
- [Hydrology data](#): Hydrologic and watershed coverages, water wells, karst dye traces, wetlands, NHD streams in Kentucky.
- [Transportation data](#): Roads and highways in Kentucky.
- [County basemap data](#): From ESRI, TIGER/Line® files--roads, railroads, rivers, lakes, political boundaries, census statistical boundaries, etc., covering the entire United States by county or state.
- [Benchmark Data](#): National Geodetic Survey data.
- [Converter](#) to convert latitude/longitude in DMS to decimal degrees.

Contact Information: If you have any questions regarding the GIS information provided by the Kentucky Geological Survey, please contact [Dan Carey](#), telephone (859) 257-5500, fax (859) 257-1147, Kentucky Geological Survey, 228 Mining and Mineral Resources Building, University of Kentucky, Lexington, KY 40506-0107

Internet

100%



[KGS Home](#) > [Maps and GIS](#)

Geospatial Data Library

The Kentucky Geological Survey and other state and federal agencies have electronic maps and GIS data that you can download for your use. The KGS GIS data are in ArcView shapefiles (registered by ESRI). The files were zipped using the WinZip utility. All the KGS datasets, unless explicitly noted, are in latitude and longitude, decimal degrees, NAD 83.

- [Kentucky Geography Network](#): Electronic warehouse of maps and GIS data from the Kentucky Geography Network.
- [Map Imagery](#): Scanned, georeferenced topographic, geologic, and other maps.
- [Elevation Data](#): Digital elevation models at various scales.
- [Political and physical boundary data](#): Maps (coverages) showing political boundaries, map indexes, regions, area development districts (ADD's), grids.
- [Geology and Soils data](#): Geologic coverages of the state, oil and gas wells, coal exploration sites.
- [Hydrology data](#): Hydrologic and watershed coverages, water wells, karst dye traces, wetlands, NHD streams in Kentucky.
- [Transportation data](#): Roads and highways in Kentucky.
- [County basemap data](#): From ESRI, TIGER/Line® files--roads, railroads, rivers, lakes, political boundaries, census statistical boundaries, etc., covering the entire United States by county or state.
- [Benchmark Data](#): National Geodetic Survey data.
- [Converter](#) to convert latitude/longitude in DMS to decimal degrees.

Contact Information: If you have any questions regarding the GIS information provided by the Kentucky Geological Survey, please contact [Dan Carey](#), telephone (859) 257-5500, fax (859) 257-1147, Kentucky Geological Survey, 228 Mining and Mineral Resources Building, University of Kentucky, Lexington, KY 40506-0107

No feeds detected on this page (Alt+J)
Feeds provide updated website content

[KGS Home](#) > [Map And GIS](#)

Georeferenced Map Imagery

- [Statewide index to 7.5-minute maps](#)
- [County index to 7.5-minute maps](#)
- [Statewide index to 15-minute maps](#)
- [Topographic maps: 24k, 7.5-minute quadrangles, Stateplane north and south](#)
- [Topographic maps: 24k, 7.5-minute quadrangles, Stateplane single zone](#)
- [Topographic maps: 250k quadrangles, UTM zones 16 and 17](#)
- [Geologic maps: 24k GQ's, State Plane: 7.5-minute geologic quadrangle maps. \(\[Lithologic symbols\]\(#\)\) \(KGS\).](#)
- [Geologic maps: 24k GQ's, Ky Single Zone: 7.5-minute geologic quadrangle maps.](#)
- [FSA NAIP Digital Ortho Photo Imagery for Kentucky: 1 meter color imagery.](#)
- [HS Imagery from KYGEONET: To help find specific location, download \[County Imagery Index Shapefile\]\(#\)](#)
- [Aerial photographs: DOQQ's. : Digital ortho quarter quads. \[What is a DOQQ?\]\(#\) \(USGS\).](#)
- [Wetlands, Landslide, and other map imagery](#)
- [Download Kentucky 1-zone projection for ArcView3 and ArcGIS8.](#)
-





Welcome to the Kentucky Geologic Quadrangle Image Download Center

High Resolution Geologic Map Images in Kentucky Single State Plane Zone, NAD 83, US Survey Feet. Use the map below to select your desired area of interest or [Click Here for Direct FTP Access](#)

The maps may be viewed with a free [MrSid](#) viewer, or with any software which supports the MrSid format, such as [ESRI's ArcView 3.1, 3.2 and ArcInfo 8.x](#). [Click here to download uncollared tiff](#)

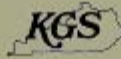
Selection Maps by Kent Anness, DGI



Hosted by:



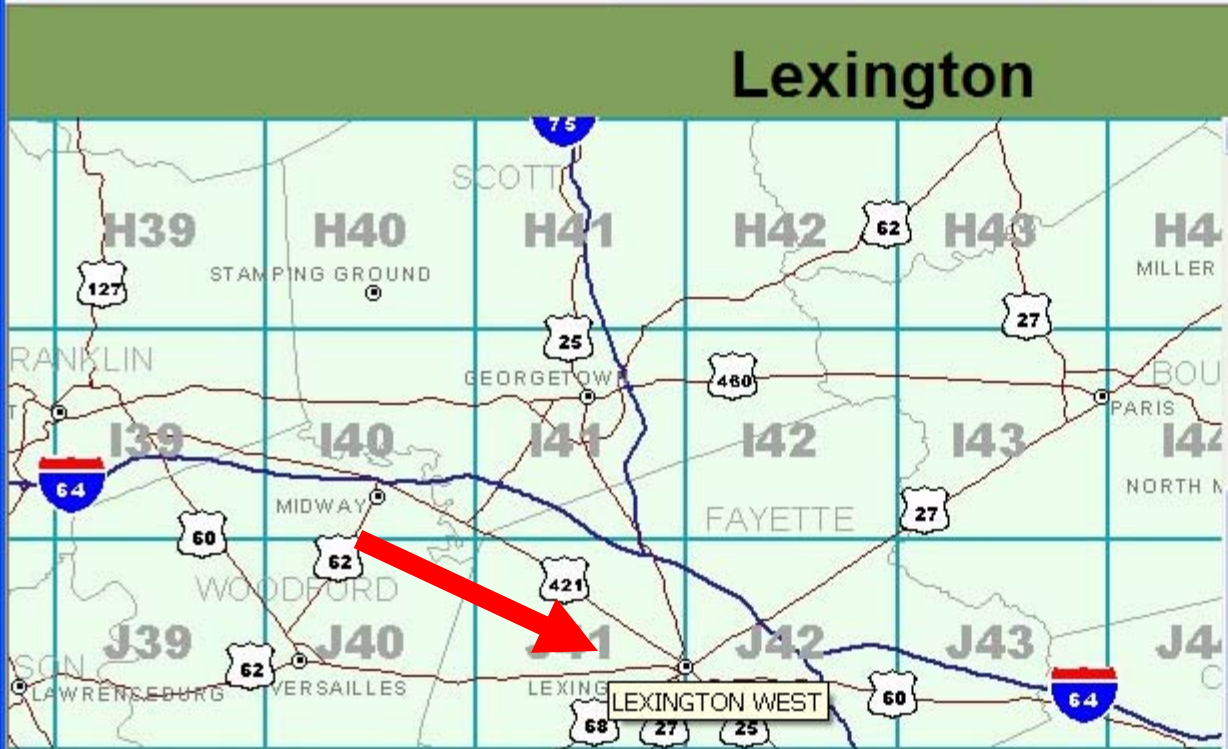
Imagery processed by [KNREPC](#), [DSMRE](#), and [KGS](#).



[World Files](#)
[Production Notes](#)
[Questions?](#)

(Documentation is included in the Zip file)
Last Updated: 12/15/2003





Right-Click within the desired quadrangle and select "Save Target As ..." in order to download the associated Geologic Quadrangle Image File to your local hard drive.

In order to utilize the SID images in GIS or CAD Software the (*.SDW) or "World" file is also needed. The SDW file can be accessed via direct FTP or all can be downloaded in one ZIP file.

[\[Return to the Main Page\]](#)



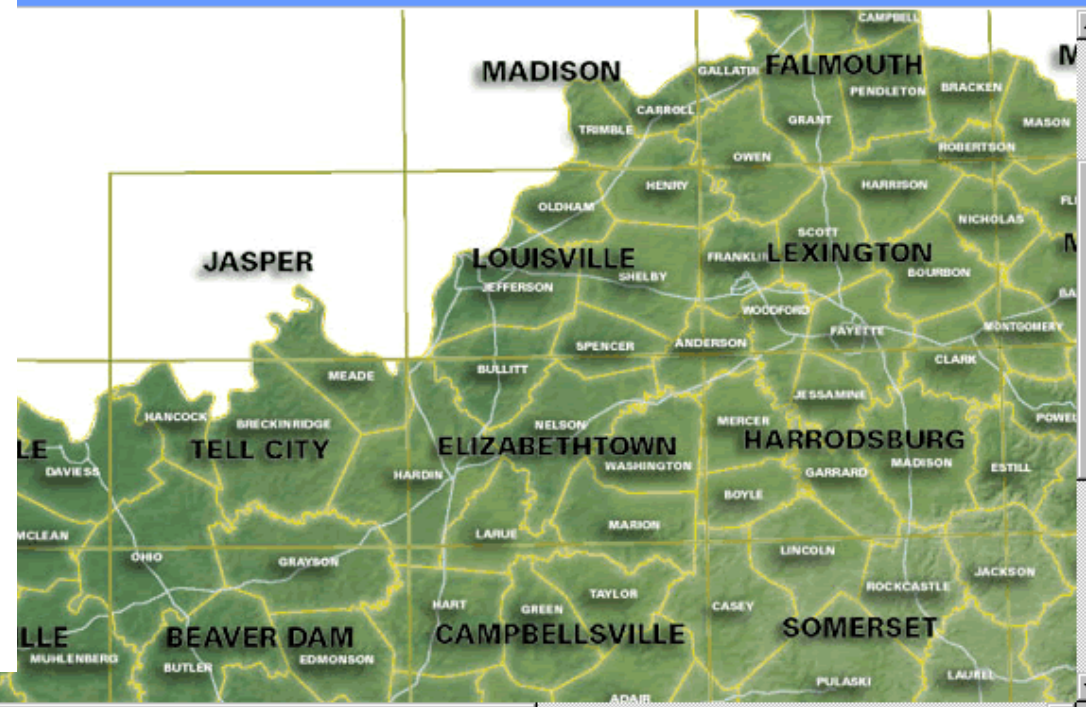
Wetlands [\(NWIP Home\)](#)

Welcome to the Kentucky Wetlands
Image Download Center

National Wetlands Inventory Map Images in Kentucky
Single State Plane Zone, NAD 83, US Survey Feet. Use
the map below to select your desired area of interest or
[Click Here for Direct FTP Access](#)

The maps may be viewed with a free [MrSid](#) viewer, or
with any software which supports the MrSid format,
such as [ESRI's](#) ArcView 3.1, 3.2 and ArcInfo 8.x.

TOPOGRAPHY GEOLOGY WETLANDS LANDSLIDES AERIALS DEMS



Hosted by:


Imagery processed by
[KNREPC](#) and [KGS](#).


[World Files](#)
[Key to Wetlands Symbols](#)
[About Wetlands](#)
[Production Notes](#)
[Questions?](#)
(Documentation is included in the Zip file)
Last Updated: 12/15/2003




Browser navigation bar including address bar (ftp://ftp.kymartian.ky.gov/gqs/), search, and menu options like Convert, Select, Favorites, and Page.

FTP directory /gqs/ at ftp.kymartian.ky.gov

To view this FTP site in Windows Explorer, click **Page**, and then click **Open FTP Site in Windows Explorer**.

[Up to higher level directory](#)

02/10/2005 12:00AM	7,848,426	gg_a39c.sid
02/10/2005 12:00AM	192	gg_a40c.sdw
02/10/2005 12:00AM	3,365,197	gg_a40c.sid
02/10/2005 12:00AM	7,848,426	gg_b38c.sid
02/10/2005 12:00AM	7,848,426	gg_b39c.sid
02/10/2005 12:00AM	192	gg_b40c.sdw
02/10/2005 12:00AM	3,365,197	gg_b40c.sid
02/10/2005 12:00AM	192	gg_b41c.sdw
02/10/2005 12:00AM	7,748,215	gg_b41c.sid
02/10/2005 12:00AM	6,922,240	gg_b42c.sid
02/10/2005 12:00AM	6,922,240	gg_b43c.sid
02/10/2005 12:00AM	192	gg_c38c.sdw
02/10/2005 12:00AM	6,810,465	gg_c38c.sid
02/10/2005 12:00AM	192	gg_c39c.sdw
02/10/2005 12:00AM	6,810,465	gg_c39c.sid
02/10/2005 12:00AM	192	gg_c40c.sdw
02/10/2005 12:00AM	6,904,894	gg_c40c.sid
02/10/2005 12:00AM	192	gg_c41c.sdw
02/10/2005 12:00AM	6,769,363	gg_c41c.sid
02/10/2005 12:00AM	192	gg_c42c.sdw
02/10/2005 12:00AM	6,285,923	gg_c42c.sid
02/10/2005 12:00AM	192	gg_c43c.sdw
02/10/2005 12:00AM	6,443,263	gg_c43c.sid
02/10/2005 12:00AM	192	gg_c44c.sdw
02/10/2005 12:00AM	6,744,448	gg_c44c.sid
02/10/2005 12:00AM	192	gg_d37c.sdw

FTP DOWNLOAD SITES

Map Imagery

Georeferenced Ma

aps

aps

ute quadrangles. Stateplane north and south

ute quadrangles. Stateplane single zone

ngles, UTM zones 16 and 17

Plane: 7.5-minute geologic quadrangle maps. (Lithologic symbols) (KGS).

ngle Zone: 7.5-minute geologic quadrangle maps.

magery for Kentucky: 1 meter color imagery.

to help find specific location, download [County Imagery Index Shapefile](#)

Digital ortho quarter quads. [What is a DOQQ?](#) (USGS).

map imagery

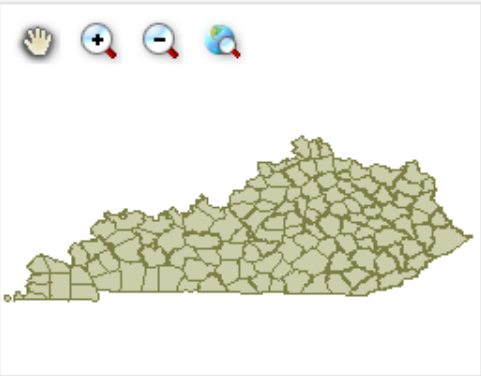
ection for ArcView3 and ArcGIS8.

[KGS Home](#) > [Map And GIS](#)

- [Statewide index to 7.5-minute maps](#)
- [County index to 7.5-minute maps](#)
- [Statewide index to 15-minute maps](#)
- [Topographic maps: 24k, 7.5-minute](#)
- [Topographic maps: 24k, 7.5-minute](#)
- [Topographic maps: 250k quadrangles](#)
- [Geologic maps: 24k GQ's, State](#)
- [Geologic maps: 24k GQ's, Ky S](#)
- [FSA NAIP Digital Ortho Photo In](#)
- [HS Imagery from KYGEONET: T](#)
- [Aerial photographs: DOQQ's. : D](#)
- [Wetlands, Landslide, and other](#)
- [Download Kentucky 1-zone proje](#)

Kentucky Geography Network
 Explore the Commonwealth!

Welcome, KYGEONET Guest KYGEONET



Words and Places:
 imagery

Narrow search by:
 Content Types [\(show all\)](#)
[Data](#)
[Live Data and Maps](#)
[Downloadable Data](#)
[Offline Data](#)

Folders
[agriculture](#)
[biologyecology](#)
[boundaries](#)

Catalog Results | Details

: [All Records](#) : ["imagery"](#) : [Data](#)



Kentucky Statewide 1 Meter Aerial Imagery (2008)

This data set contains natural color imagery from the National Agriculture Imagery Program (NAIP). NAIP acquires digital ortho imagery during the agricultural growing seasons in the continental U.S.. A primary goal of the NAIP program is to able availability of ortho imagery within one year of acquisition. NAIP provides four main products: 1 meter ground sample distance (GSD) ortho imagery rectified to a horizontal accuracy of within +/- 5 meters of reference digital ortho quarter quads (DOQQ's) from the National Digital Ortho Program (NDOP); 2 meter GSD ortho imagery rectified to within +/- 10 meters of reference DOQQs; 1 meter GSD ortho imagery rectified to within +/- 6 meters to true ground; and, 2 meter GSD ortho imagery rectified to within +/- 10 meters to true ground. NAIP imagery may contain as much as 10% cloud cover per tile. This imagery dataset has been tiled using the Kentucky 20K Tiling Scheme and it has been projected into Kentucky Single Zone, NAD 83, US Survey Feet, FIPS 1600.

Document Links

[HTML](#)
[XML](#)

Content Citation

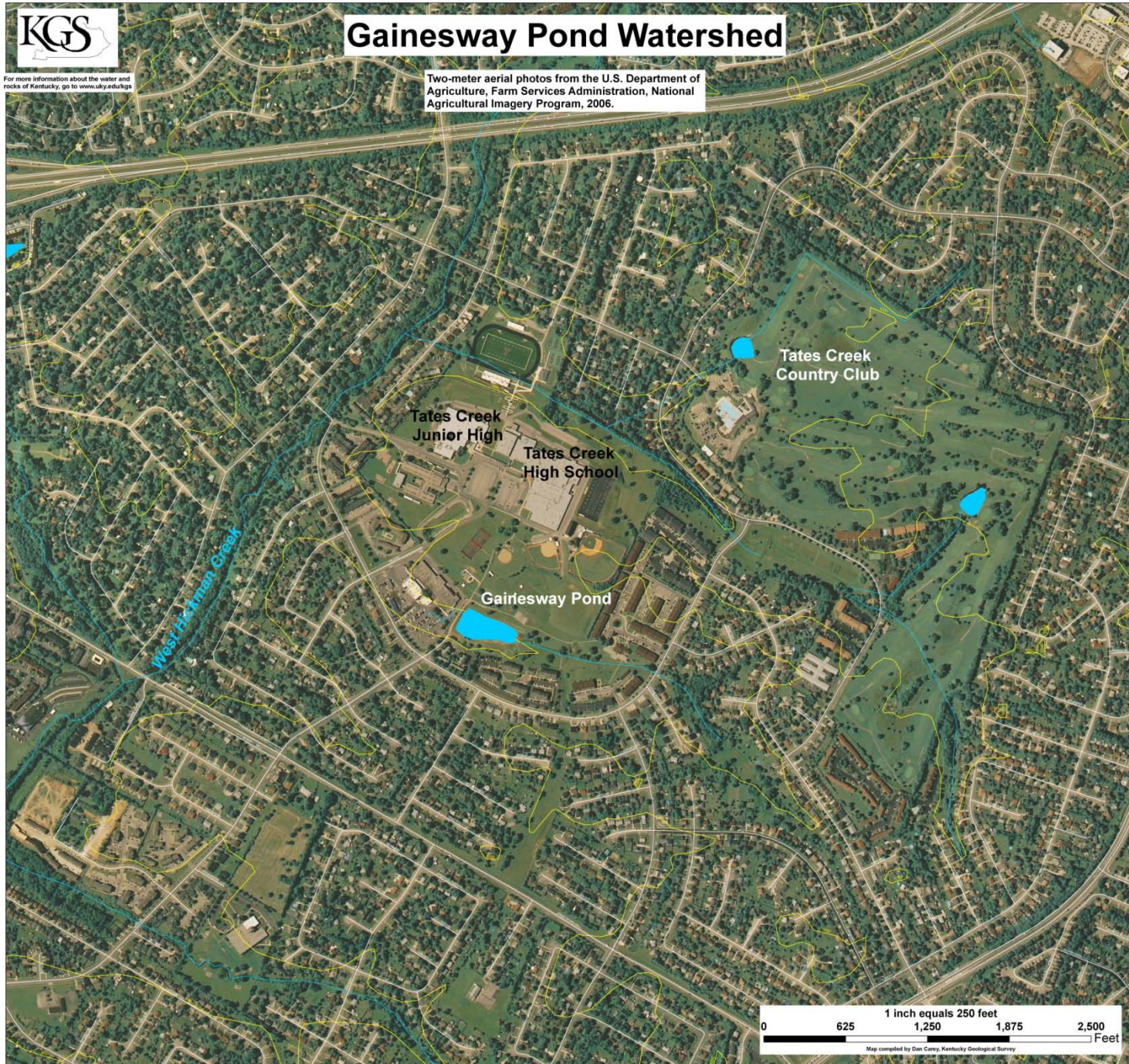
Title of Content: Kentucky Statewide 1 Meter Aerial Imagery (2008)



Gainesway Pond Watershed

For more information about the water and rocks of Kentucky, go to www.uky.edu/kgs

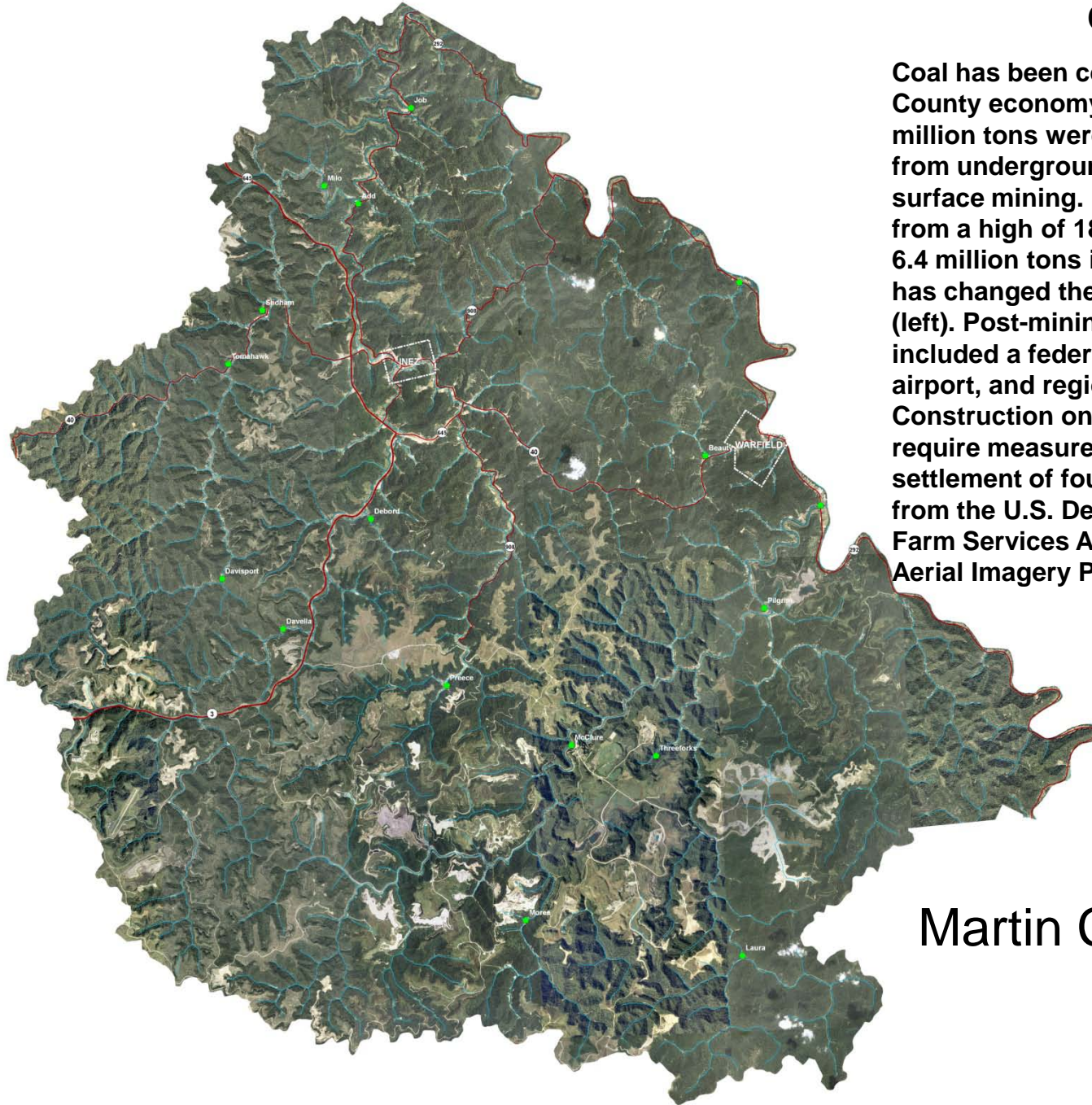
Two-meter aerial photos from the U.S. Department of Agriculture, Farm Services Administration, National Agricultural Imagery Program, 2006.



1 inch equals 250 feet
0 625 1,250 1,875 2,500 Feet
Map compiled by Dan Casey, Kentucky Geological Survey

Coal

Coal has been central to the Martin County economy. From 1879 to 2004, 391 million tons were produced: 202 million from underground and 189 million from surface mining. Production declined from a high of 18.1 million tons in 1985 to 6.4 million tons in 2004. Surface mining has changed the face of Martin County (left). Post-mining land uses have included a federal prison, regional airport, and regional industrial park. Construction on reclaimed areas may require measures to prevent differential settlement of foundations. Aerial photos from the U.S. Department of Agriculture Farm Services Administration, National Aerial Imagery Program, 2004.



Martin County

Map and GIS Information

[ark](#)
ic maps, interactive maps, standards
[Digital Mapping Program](#)
to convert Kentucky's 1:24,000 GQ series to GIS format

[Kentucky Transportation Cabinet](#)

and scanned, georeferenced maps
[System \(WRIS\)](#)
ucture in Kentucky--data, maps, reports

erial photos
[nic Information \(OGI\)](#)
 ky

[GS\)](#)
benchmarks and other geodetic information.

[ion System \(GNIS\)](#)
y site where you can search for the location of more than 2 million physical and cultural geographic features by the

Links to More M

- [Kentucky Geography Network](#)
Downloadable data, stati
- [Kentucky Geological Survey](#)
Describes the program
- [Kentucky Highway Maps](#)
Online maps from the Ke
- [Other Maps](#)
Order, view, and downlo
- [Water Resource Information](#)
Water and sewer infrastr
- [Terra Server](#)
Satellite imagery and aer
- [Kentucky Office of Geograph](#)
GIS activities in Kentuck
- [National Geodetic Survey \(N](#)
Search the NGS site for
- [Geographic Names Informat](#)
A U.S. Geological Surve
name of the feature.

[KGS Home](#) > [Maps and GIS](#)

Geospatial Data Library

The Kentucky Geological Survey and other state and federal agencies have electronic maps and GIS data that you can download for your use. The KGS GIS data are in ArcView shapefiles (registered by ESRI). The files were zipped using the WinZip utility. All the KGS datasets, unless explicitly noted, are in latitude and longitude, decimal degrees, NAD 83.

- [Kentucky Geography Network](#): Electronic warehouse of maps and GIS data from the Kentucky Geography Network.
- [Map Imagery](#): Scanned, georeferenced topographic, geologic, and other maps.
- [Elevation Data](#): Digital elevation models at various scales.
- [Political and physical boundary data](#): Maps (coverages) showing political boundaries, map indexes, regions, area development districts (ADD's), grids.
- [Geology and Soils data](#): Geologic coverages of the state, oil and gas wells, coal exploration sites.
- [Hydrology data](#): Hydrologic and watershed coverages, water wells, karst dye traces, wetlands, NHD streams in Kentucky.
- [Transportation data](#): Roads and highways in Kentucky.
- [County basemap data](#): From ESRI, TIGER/Line® files--roads, railroads, rivers, lakes, political boundaries, census statistical boundaries, etc., covering the entire United States by county or state.
- [Benchmark Data](#): National Geodetic Survey data.
- [Converter](#) to convert latitude/longitude in DMS to decimal degrees.

Contact Information: If you have any questions regarding the GIS information provided by the Kentucky Geological Survey, please contact [Dan Carey](#), telephone (859) 257-5500, fax (859) 257-1147, Kentucky Geological Survey, 228 Mining and Mineral Resources Building, University of Kentucky, Lexington, KY 40506-0107

Address bar: ftp://ftp.kymartian.ky.gov/dems/

Page title: Convert Select

Favorites: FTP directory /dems/ at ftp.kymartian.ky.gov

Page: Page Safety Tools

10/04/2002	12:00AM	4,307,649	133 dem.e00.zip
10/04/2002	12:00AM	4,096,253	134 dem.e00.zip
10/04/2002	12:00AM	4,224,535	135 dem.e00.zip
10/04/2002	12:00AM	4,347,093	136 dem.e00.zip
10/04/2002	12:00AM	4,309,744	137 dem.e00.zip
10/04/2002	12:00AM	4,220,096	138 dem.e00.zip
10/04/2002	12:00AM	3,987,900	139 dem.e00.zip
10/04/2002	12:00AM	4,282,424	140 dem.e00.zip
10/04/2002	12:00AM	4,288,983	141 dem.e00.zip
10/04/2002	12:00AM	4,564,705	142 dem.e00.zip
10/04/2002	12:00AM	4,296,974	143 dem.e00.zip
10/04/2002	12:00AM	4,244,626	144 dem.e00.zip
10/04/2002	12:00AM	4,490,821	145 dem.e00.zip
10/04/2002	12:00AM	4,511,038	146 dem.e00.zip
10/04/2002	12:00AM	4,567,690	147 dem.e00.zip
10/04/2002	12:00AM	4,875,277	148 dem.e00.zip
10/04/2002	12:00AM	4,649,170	149 dem.e00.zip
10/04/2002	12:00AM	4,561,761	150 dem.e00.zip
10/04/2002	12:00AM	4,637,517	151 dem.e00.zip
10/04/2002	12:00AM	4,714,245	152 dem.e00.zip
10/04/2002	12:00AM	4,715,870	153 dem.e00.zip
10/04/2002	12:00AM	4,840,183	154 dem.e00.zip
10/04/2002	12:00AM	4,816,464	155 dem.e00.zip
10/04/2002	12:00AM	4,951,067	156 dem.e00.zip
10/04/2002	12:00AM	4,909,218	157 dem.e00.zip
10/04/2002	12:00AM	5,016,027	158 dem.e00.zip
10/04/2002	12:00AM	5,115,773	159 dem.e00.zip
10/04/2002	12:00AM	3,096,139	m12 dem.e00.zip
10/04/2002	12:00AM	3,262,339	m13 dem.e00.zip
10/04/2002	12:00AM	3,660,682	m14 dem.e00.zip
10/04/2002	12:00AM	3,374,682	m15 dem.e00.zip
10/04/2002	12:00AM	3,679,096	m16 dem.e00.zip
10/04/2002	12:00AM	3,579,843	m17 dem.e00.zip
10/04/2002	12:00AM	3,629,905	m18 dem.e00.zip
10/04/2002	12:00AM	3,682,923	m19 dem.e00.zip

Right click, save target as
Save to folder, unzip.
Note .e00 extension



File Edit View Go Tools Window Help

Toolbars

Location: Identify Results...

Stylesheet: Refresh F5

- ✓ Main menu
- 3D View Tools
- ArcGIS Server Tools
- ArcView 8x Tools**
- ✓ Geography
 - Globe View Tools
 - ✓ Location
 - ✓ Metadata
 - ✓ Standard
 - Customize...
 - View Source
- Geocoding Tools
- Geostatistical Analyst Tools
- Linear Referencing Tools
- Mobile Tools
- Multidimension Tools
- Network Analyst Tools

ArcView 8x Tools

Conversion Tools

- Shapefile to DXF...
- Shapefile to AGF...
- AGF to Shapefile...
- Import from Interchange File...**
- MIF to Shapefile...
- SDTS Point To Coverage...
- SDTS Raster To Grid...

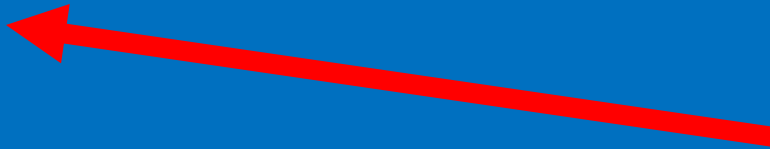
ArcView Import from Interchange File

Input file: M:\POWERPOINTS\dem\h48_dem.e00\h48_dem.e00

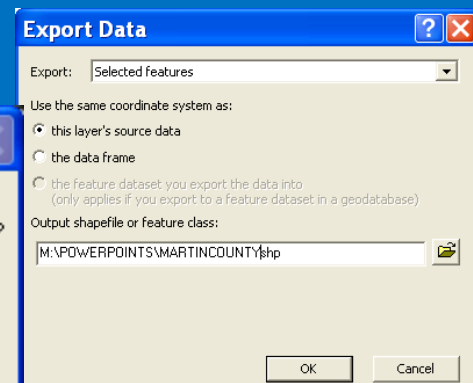
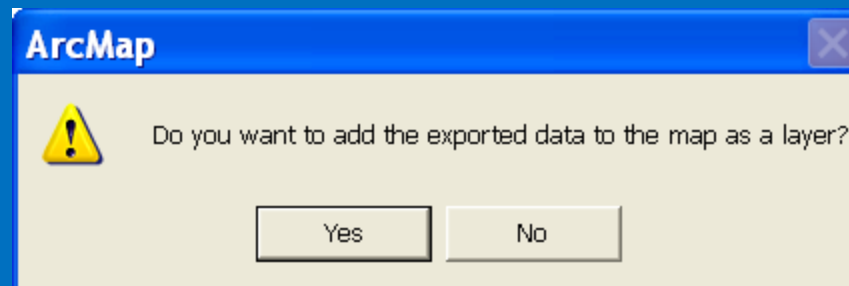
Output dataset: M:\POWERPOINTS\dem\H48DEM

OK Cancel Help Batch

7.5' 10-meter dems
download, unzip,
import, add to
ArcMap, combine

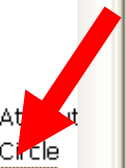


Select feature(s), right-click on layer, Data, Export Data



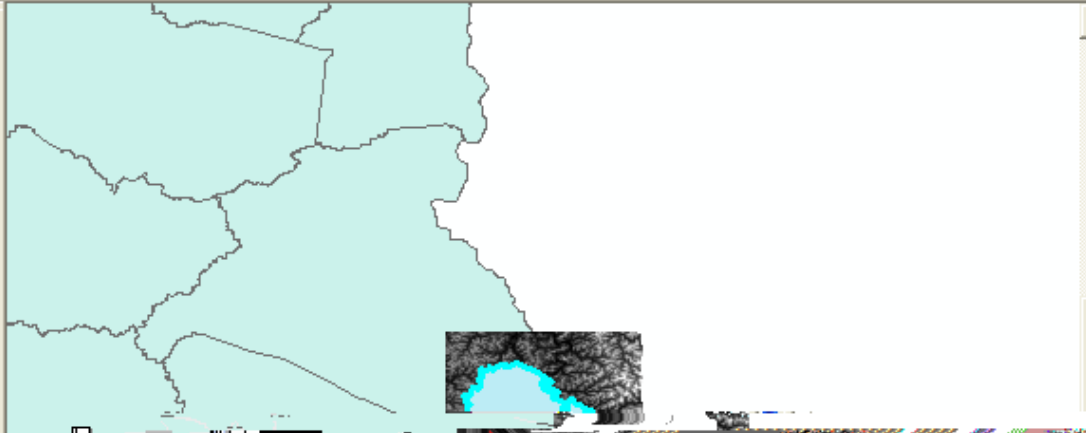
Spatial Analyst Tools

- Conditional
- Density
- Distance
- Extraction
 - Extract by Attribute
 - Extract by Circle
 - Extract by Mask**
 - Extract by Points
 - Extract by Polygon
 - Extract by Rectangle



Layers

- MARTINCOUNTY
- MARTINDEM
 - Value
 - High : 1931.5
 - Low : 533
- k57
 - Value
 - High : 1259.4
 - Low : 533.7



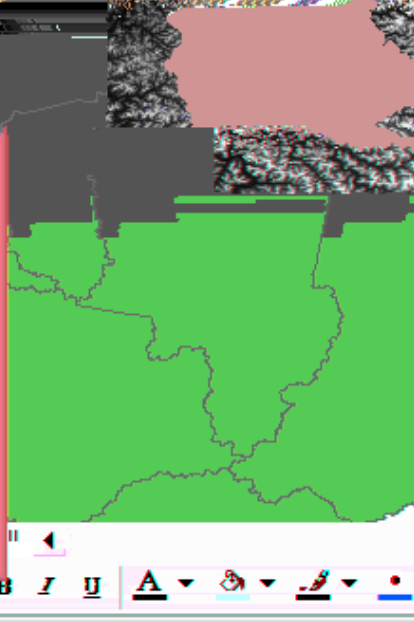
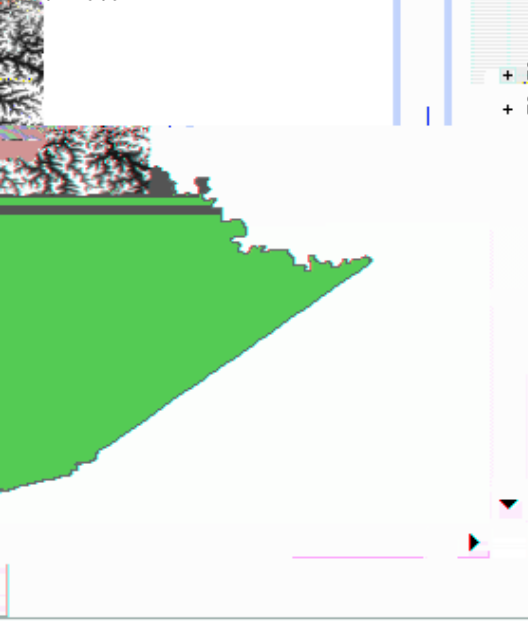
Extract by Mask

Input raster: MARTINDEM

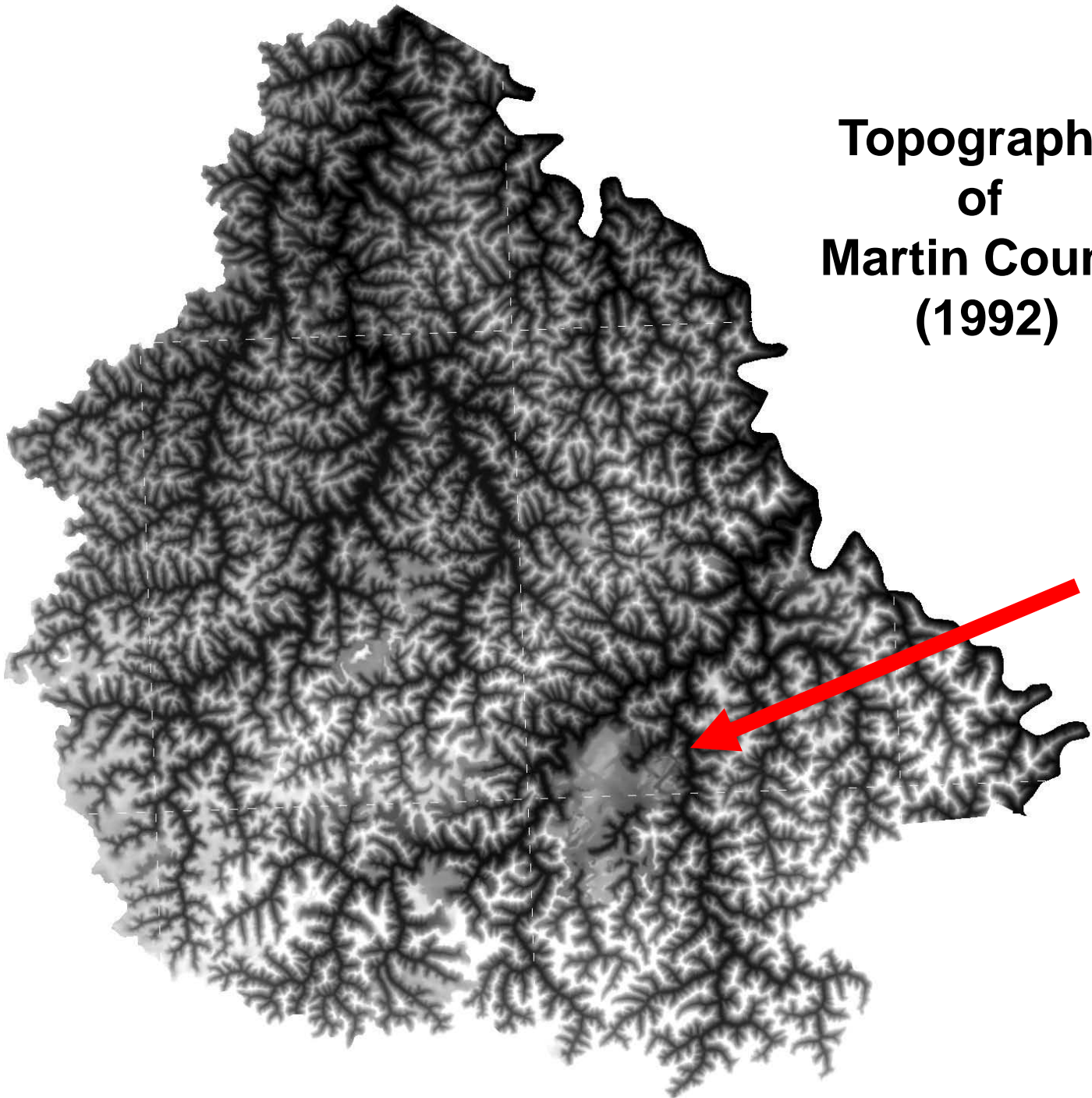
Input raster or feature mask data: MARTINCOUNTY.shp

Output raster: M:\POWERPOINTS\martin\MARTINTOPO

OK Cancel Environments... Show Help >>



**Topography
of
Martin County
(1992)**



[KGS Home](#) > [Maps and GIS](#)

Geospatial Data Library

The Kentucky Geological Survey and other state and federal agencies have electronic maps and GIS data that you can download for your use. The KGS GIS data are in ArcView shapefiles (registered by ESRI). The files were zipped using the WinZip utility. All the KGS datasets, unless explicitly noted, are in latitude and longitude, decimal degrees, NAD 83.

- [Kentucky Geography Network](#): Electronic warehouse of maps and GIS data from the Kentucky Geography Network.
- [Map Imagery](#): Scanned, georeferenced topographic, geologic, and other maps.
- [Elevation Data](#): Digital elevation models at various scales.
- [Political and physical boundary data](#): Maps (coverages) showing political boundaries, map indexes, regions, area development districts (ADD's), grids.
- [Geology and Soils data](#): Geologic coverages of the state, oil and gas wells, coal exploration sites.
- [Hydrology data](#): Hydrologic and watershed coverages, water wells, karst dye traces, wetlands, NHD streams in Kentucky.
- [Transportation data](#): Roads and highways in Kentucky.
- [County basemap data](#): From ESRI, TIGER/Line® files--roads, railroads, rivers, lakes, political boundaries, census statistical boundaries, etc., covering the entire United States by county or state.
- [Benchmark Data](#): National Geodetic Survey data.
- [Converter](#) to convert latitude/longitude in DMS to decimal degrees.

Contact Information: If you have any questions regarding the GIS information provided by the Kentucky Geological Survey, please contact [Dan Carey](#), telephone (859) 257-5500, fax (859) 257-1147, Kentucky Geological Survey, 228 Mining and Mineral Resources Building, University of Kentucky, Lexington, KY 40506-0107

[KGS Home](#) > [Maps and GIS](#)

State Boundary Series

Coverages showing political boundaries, map indexes, regions, area development districts (ADDs), g

Description	Click to Download by FTP (file size)
Area Development District boundaries	ADDs.ZIP (0.06 Mb)
Census blocks, 1990	CENTRACT.ZIP (7 Mb)
Census tracts, 2000	kytracts2000.zip (1.7 Mb)
Census blocks, 2000	Census Blocks 2000 by County
Census block groups, 2000	kyblkgrp2000.zip (7.3 Mb)
County boundaries	From KYGEONET (scroll down)
Kentucky Cities and Populated Places	From KYGEONET (scroll down)
Kentucky state boundary	KY.ZIP (0.09 Mb)



Congressional Districts of Kentucky	kycongress.zip (0.5 Mb)
Kentucky State House Districts	kyhouse.zip (2.0 Mb)
Kentucky Senate Districts	kysenate.zip (1.3 Mb)
Regions of Kentucky	REGIONS.ZIP (0.06 Mb)
Kentucky Zip Codes	ZIPKY.ZIP (0.72 Mb)
7.5-minute quadrangle index grid	QUADSKY.ZIP (0.04 Mb)
15-minute quadrangle grid	QUADS15.ZIP (0.01 Mb)
100,000-scale USGS map grid index	MAPS100K.ZIP (0.003 Mb)
250,000-scale index grid	MAPS250K.ZIP (0.004 Mb)

**Click on a county or use
the dropdown list below**

**Convert View To
Html Polygon
Image Map
ArcView Script**



ArcScripts Home - ESRI Support - Windows Internet Explorer

http://arcscripts.esri.com/

Convert Select

Favorites Free Hotmail Web Slice Gallery Suggested Sites

ArcScripts Home - ESRI Support

You are here: [Home](#) > [Downloads](#) > ArcScripts

HTML Image Map Creator

[download](#) | [contact author](#) | [download help](#) | [add bookmark](#) | [view bookmarks](#)

Author	kevin robicheau
File Name	ImageMapper.zip
Language	Visual Basic
Last Modified	Jun 10 2005
Status of work	Public Domain
Software	ArcGIS Desktop
File Size	135.32 kb
Downloads	2205

[report inappropriate content](#) ArcScripts is intended for the free exchange of scripts and too the moderator if this script is a demo, trial-version, or an advertisement for a retail product.

Summary

This command button makes an HTML image map (a clickable map) from a polygon layer. It work of points that you want to make each imagemap polygon from.

Requires: a selected polygon layer in the table of contents.
Optional: NAME and HREF fields have been added to the table of the feature class.

HREF is the link, for example -
<http://www.boston.com>

NAME is the text that shows up when the pointer hovers over a polygon.

Output is a jpeg and a html page.

this is a dll -you can add it to ArcGIS though the customize window- and the code to compile it.

Search ArcScripts

Use the following options to customize your search:

All languages

All ESRI software

10 Results per page Show script summaries


Search for [Search](#) [Tips](#)

Quick Searches

- [Top ten ArcScripts](#)
The ten most popular ArcScripts.
- [Latest ArcScripts](#)
The most recent ArcScripts.
- [View all ArcScripts](#)
A complete list of all ArcScripts.

My ArcScripts

- [Upload a script \(login required\)](#)
Do you want to share a script with the ESRI user community?
Upload it here!
- [Edit my scripts \(login required\)](#)





Hide



Locate



Back



Web Help

Contents Index Favorites Search

Type in the keyword to find:

dll

DLLs

DMS values
docking
 preventing
 toolbars
documentation
 exporting for geoprocessing tools
 of your database design
 providing for tools
 viewing for geoprocessing tools
Documentation Editor
documents
 list of in ArcGIS
 locking/unlocking
 maps, saving
 overview of
 saving 3D
 saving to previous version of ArcGIS
Domain to Table tool/command
domains
 about
 accessing in ArcCatalog

Display

Topics Found

Click a topic, then click Display.

Title	Location
Adding custom commands and toolbars ...	Writing macros using VBA
Supported raster dataset file formats	RasterData

Display

Cancel

Use it as you would any other command or toolbar.

How to add custom commands and toolbars

1. Click the Tools menu and click Customize.
2. Click Add from file.
3. Navigate to the file containing the custom command.
4. Click the file and click Open.
The Added Objects dialog box appears, reporting which new objects have been registered with ArcMap or ArcCatalog.
5. Click OK.
6. Click the Toolbars tab.
7. Check the custom toolbar that was added or check the toolbar to which you want to add the custom command.
8. Click the Commands tab.
9. Click the custom command's category in the Categories list.
10. Click and drag the command from the Commands list and drop it on the toolbar.
11. Click Close.

Tip

- If a search string is entered in the 'Show commands containing' text field, you may not see the newly added command(s) immediately after dismissing the Added Object dialog. Cancel the command list filtering by clearing the search string in the text field.



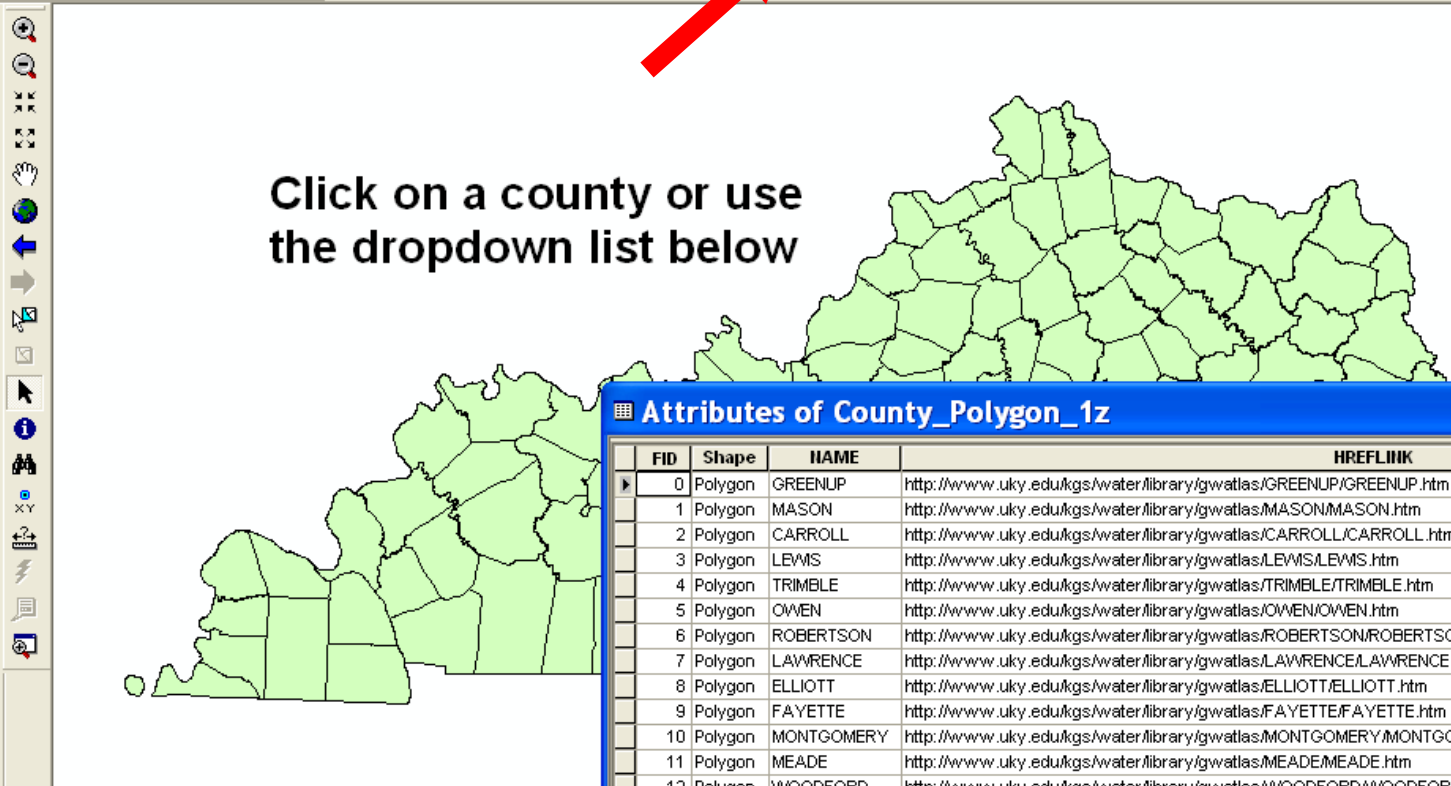
Resource Center

Related topics

Custom commands and toolbars may require programming language that supports the ActiveX DLLs. If you are using an ActiveX DLL containing custom commands or toolbars, you can register the DLL to ArcMap or ArcCatalog, you can

Layers

- County_Polygon_1z



Attributes of County_Polygon_1z

FID	Shape	NAME	HREFLINK
0	Polygon	GREENUP	http://www.uky.edu/kgs/water/library/gwatlas/GREENUP/GREENUP.htm
1	Polygon	MASON	http://www.uky.edu/kgs/water/library/gwatlas/MASON/MASON.htm
2	Polygon	CARROLL	http://www.uky.edu/kgs/water/library/gwatlas/CARROLL/CARROLL.htm
3	Polygon	LEWIS	http://www.uky.edu/kgs/water/library/gwatlas/LEWIS/LEWIS.htm
4	Polygon	TRIMBLE	http://www.uky.edu/kgs/water/library/gwatlas/TRIMBLE/TRIMBLE.htm
5	Polygon	OWEN	http://www.uky.edu/kgs/water/library/gwatlas/OWEN/OWEN.htm
6	Polygon	ROBERTSON	http://www.uky.edu/kgs/water/library/gwatlas/ROBERTSON/ROBERTSON.htm
7	Polygon	LAWRENCE	http://www.uky.edu/kgs/water/library/gwatlas/LAWRENCE/LAWRENCE.htm
8	Polygon	ELLIOTT	http://www.uky.edu/kgs/water/library/gwatlas/ELLIOTT/ELLIOTT.htm
9	Polygon	FAYETTE	http://www.uky.edu/kgs/water/library/gwatlas/FAYETTE/FAYETTE.htm
10	Polygon	MONTGOMERY	http://www.uky.edu/kgs/water/library/gwatlas/MONTGOMERY/MONTGOMERY.htm
11	Polygon	MEADE	http://www.uky.edu/kgs/water/library/gwatlas/MEADE/MEADE.htm
12	Polygon	WOODFORD	http://www.uky.edu/kgs/water/library/gwatlas/WOODFORD/WOODFORD.htm
13	Polygon	SPENCER	http://www.uky.edu/kgs/water/library/gwatlas/SPENCER/SPENCER.htm
14	Polygon	POWELL	http://www.uky.edu/kgs/water/library/gwatlas/POWELL/POWELL.htm
15	Polygon	DAVISS	http://www.uky.edu/kgs/water/library/gwatlas/DAVISS/DAVISS.htm
16	Polygon	MADISON	http://www.uky.edu/kgs/water/library/gwatlas/MADISON/MADISON.htm

[KGS Home](#) > [Maps and GIS](#)

Geospatial Data Library

The Kentucky Geological Survey and other state and federal agencies have electronic maps and GIS data that you can download for your use. The KGS GIS data are in ArcView shapefiles (registered by ESRI). The files were zipped using the WinZip utility. All the KGS datasets, unless explicitly noted, are in latitude and longitude, decimal degrees, NAD 83.

- [Kentucky Geography Network](#): Electronic warehouse of maps and GIS data from the Kentucky Geography Network.
- [Map Imagery](#): Scanned, georeferenced topographic, geologic, and other maps.
- [Elevation Data](#): Digital elevation models at various scales.
- [Political and physical boundary data](#): Maps (coverages) showing political boundaries, map indexes, regions, area development districts (ADD's), grids.
- [Geology and Soils data](#): Geologic coverages of the state, oil and gas wells, coal exploration sites.
- [Hydrology data](#): Hydrologic and watershed coverages, water wells, karst dye traces, wetlands, NHD streams in Kentucky.
- [Transportation data](#): Roads and highways in Kentucky.
- [County basemap data](#): From ESRI, TIGER/Line® files--roads, railroads, rivers, lakes, political boundaries, census statistical boundaries, etc., covering the entire United States by county or state.
- [Benchmark Data](#): National Geodetic Survey data.
- [Converter](#) to convert latitude/longitude in DMS to decimal degrees.

Contact Information: If you have any questions regarding the GIS information provided by the Kentucky Geological Survey, please contact [Dan Carey](#), telephone (859) 257-5500, fax (859) 257-1147, Kentucky Geological Survey, 228 Mining and Mineral Resources Building, University of Kentucky, Lexington, KY 40506-0107



State Geology Series

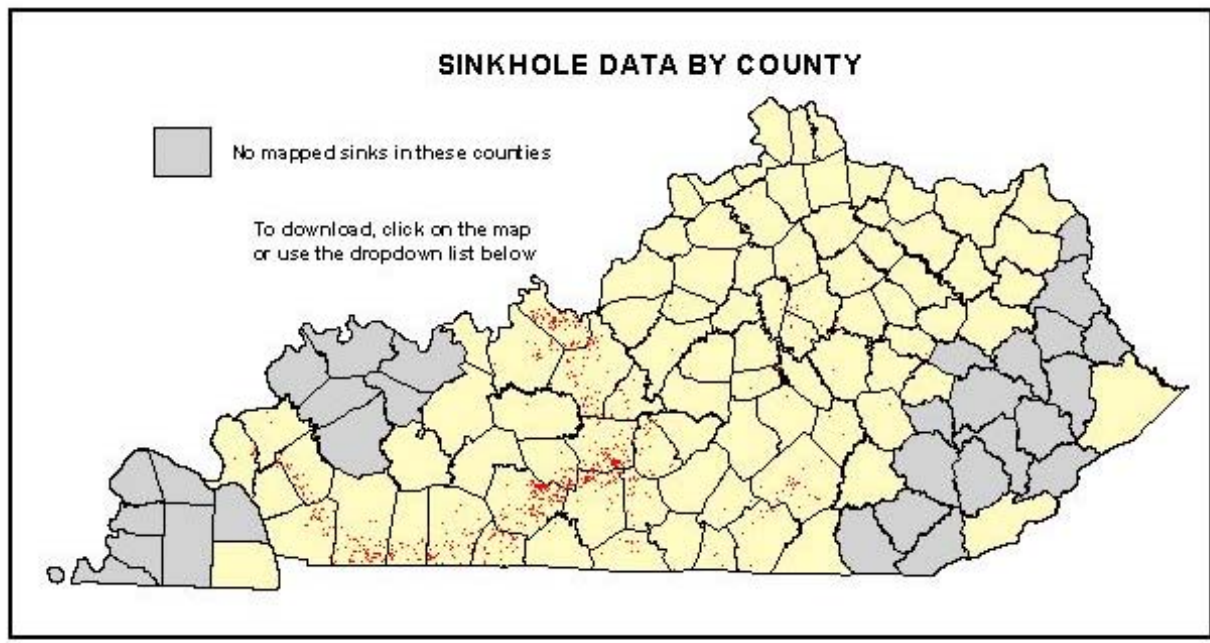
[The Logic of Geologic Maps](#)

Various geologic coverages of the state

Description of Coverage	Click to Download by FTP (file size)
Kentucky Mine Mapping Information System	Mining FTP download page
Coal Exploration Sites	kycoal.ZIP (0.33 Mb)
Ecoregions of Kentucky	kyeco.zip (0.13 Mb)
Ecoregions of the U.S. (level III)	useco3.zip (3.1 Mb)
Ecoregions of the U.S. (level III-IV)	useco4.zip (12.5 Mb)
Simplified Geology of Kentucky	kygeol.ZIP (4.2 Mb)
Geologic faults--1:24,000	kyfaults24k.ZIP (2.77 Mb)
Geologic Structure Contours--1:24,000	kystructure.ZIP (40 Mb)
Karst geology--1:500,000	karst500k.zip (1.1 Mb)
Kentucky Quarries	kyquarry.ZIP (0.01 Mb)
Oil and Gas Wells	Download the shape file
Kentucky Soils	Soils by County (2-22 Mb)
Soil Survey Point Observations	nrsc_sf_ky_PARTIAL_020805.zip (0.9 Mb)
Sinkholes in Kentucky	Sinkhole Data
1-minute Carter coordinate grid	CARTER1.ZIP (1.4 Mb)
5-minute Carter coordinates	CARTER5.ZIP (0.07 Mb)

[KGS Home](#) > [Maps and GIS](#)

Download Sinkhole Data by County



Select a County ...

[DOWNLOAD FULL DATA SET](#)
(32.4 Mb FILE)
[METADATA](#)

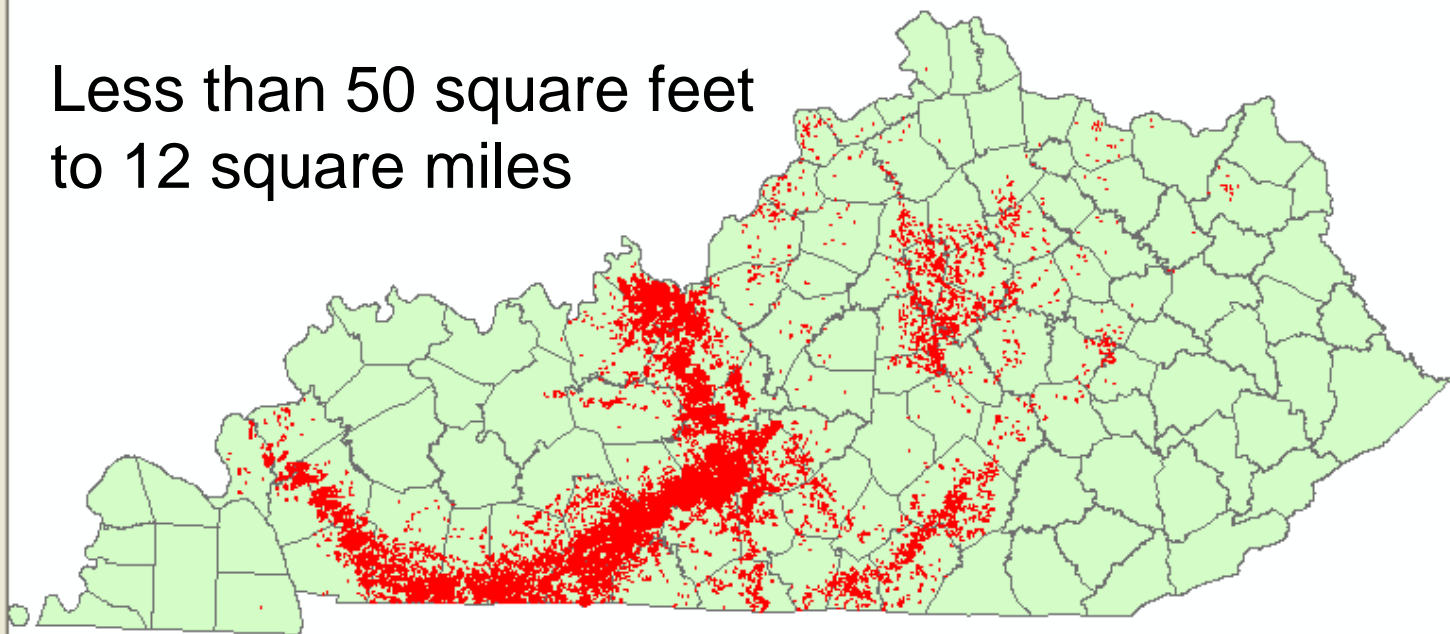
Layers

- kentucky_sinkholes
- COUNTYMAPPICK

Display Source Selection

Over 100,000 mapped sinkholes

Less than 50 square feet
to 12 square miles



Mapping Karst Geology

KARST OCCURRENCE IN KENTUCKY

Randall L. Paylor and
James C. Currents

This map was compiled from a digital version of the 1:500,000-scale geologic map of Kentucky (Paylor, M.C., comp., 1988, Geologic map of Kentucky: U.S. Geological Survey). The areas of potential karst development were delineated using stratigraphic units mapped on the geologic map. The classification of the potential karst development was based on the field experience of the authors and other data. A number of isolated carbonate units that would not have otherwise been differentiated on the geologic map were merely digitized for this map.

This karst map should not be used for evaluating karst geologic hazards or hydrogeology at scales larger than 1:500,000. The base geologic map was digitized at 1:500,000 scale and is limited in precision to that scale. Because of the small scale of the original geologic map, lithostratigraphic units were consolidated into thicker lithostratigraphic units to create an area large enough to digitize on the geologic map. In some cases, the consolidation resulted in subunits (members or divisions) and associated units (conglomerate or shales, for example) being grouped; these rocks are not indicated on this map. Although the potential for karst development can be predicted from lithology, other factors such as relief and length of time the rock is exposed are also important and were not considered in the making of this map. In such areas where the near-surface substrata is insoluble and closely underlain by soluble rocks are common, particularly in the Eastern Pennsylvanian. Conditions that promote drainage commonly related through ridges, especially insoluble rocks. Therefore, some areas mapped as having limited potential that are adjacent to areas of higher potential are actually karst, but cannot be delineated on this map.

Karst is a terrain that is generally underlain by limestone or dolomite, where the topography is formed chiefly by the dissolving of rock. Karst landscapes are commonly characterized by sinkholes, sinking streams, closed depressions, subterranean drainage, large springs, and caves.

Karst regions are susceptible to unique pollution such as sinkhole collapse, sinkhole flooding, and rapid groundwater pollution. Springs in karst areas are an important product because of groundwater. Some biologic communities and geologic processes can be found in the karst landscape and are important development in karst landscapes.

For more information, visit the website of this map and contact the author.

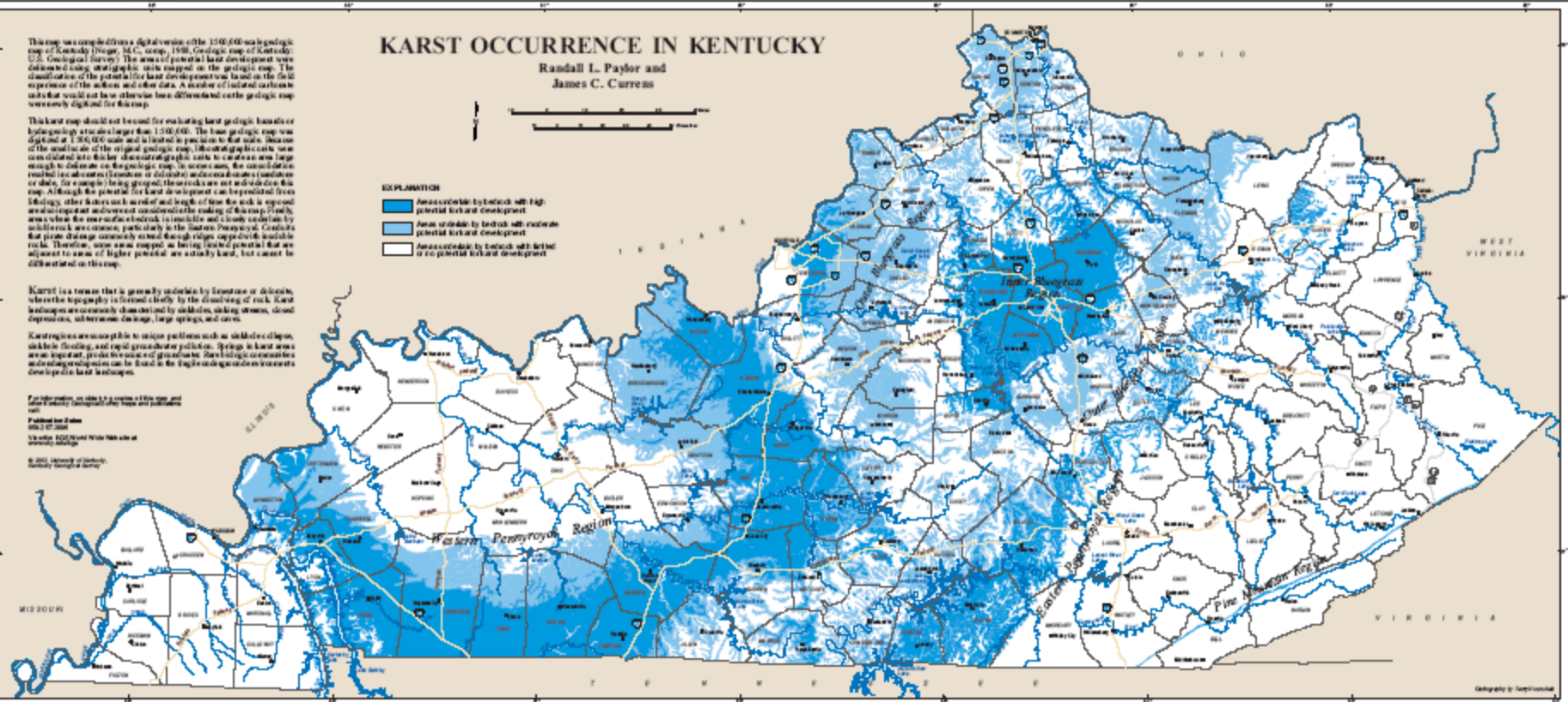
Published on July 15, 2011

Visit the USGS National Water Information System website at www.water.usgs.gov

© 2011, Kentucky Geological Survey

EXPLANATION

- Areas underlain by bedrock with high potential for karst development
- Areas underlain by bedrock with moderate potential for karst development
- Areas underlain by bedrock with limited or no potential for karst development



[KGS Home](#) > [Maps and GIS](#)

Geospatial Data Library

The Kentucky Geological Survey and other state and federal agencies have electronic maps and GIS data that you can download for your use. The KGS GIS data are in ArcView shapefiles (registered by ESRI). The files were zipped using the WinZip utility. All the KGS datasets, unless explicitly noted, are in latitude and longitude, decimal degrees, NAD 83.

- [Kentucky Geography Network](#): Electronic warehouse of maps and GIS data from the Kentucky Geography Network.
- [Map Imagery](#): Scanned, georeferenced topographic, geologic, and other maps.
- [Elevation Data](#): Digital elevation models at various scales.
- [Political and physical boundary data](#): Maps (coverages) showing political boundaries, map indexes, regions, area development districts (ADD's), grids.
- [Geology and Soils data](#): Geologic coverages of the state, oil and gas wells, coal exploration sites.
- [Hydrology data](#): Hydrologic and watershed coverages, water wells, karst dye traces, wetlands, NHD streams in Kentucky.
- [Transportation data](#): Roads and highways in Kentucky.
- [County basemap data](#): From ESRI, TIGER/Line® files--roads, railroads, rivers, lakes, political boundaries, census statistical boundaries, etc., covering the entire United States by county or state.
- [Benchmark Data](#): National Geodetic Survey data.
- [Converter](#) to convert latitude/longitude in DMS to decimal degrees.



Contact Information: If you have any questions regarding the GIS information provided by the Kentucky Geological Survey, please contact [Dan Carey](#), telephone (859) 257-5500, fax (859) 257-1147, Kentucky Geological Survey, 228 Mining and Mineral Resources Building, University of Kentucky, Lexington, KY 40506-0107

State Hydrology Series

Hydrologic and watershed coverages

Descriptions	Click to Download by FTP (file size)
Kentucky Water Resources Information System	Public Water and Sewer (KIA)
14-DIGIT HUICS	Download 14-digit HUICS
Hi-res National Hydrography Data	High-res data by basin (up to 22 Mb)
Hi-res National Hydrography Data	NHD 100k Streams by county (up to 280 Kb)
Hi-res National Hydrography Data	NHD 24k Streams by County (up to 1.7 Mb)
Hi-res National Hydrography Data	NHD 24k Waterbodies by County (up to 1.9 Mb)
TMDL data from KY DOW	TMDL data from KY DOW (KYGEONET)
USGS surface water monitoring sites	usqsgage.ZIP (0.04 Mb)
About USGS Peak Flow Stream Data	USGS Peak Flow Stream Data (KYGEONET)
About FEMA Q3 Flood Data	Flood Data (FEMA Q3) (KYGEONET)
Source-Water Protection Areas	Source-Water Protection Areas (KYGEONET)
305(b) Streams - Overall Use Support	Download 305(b) Streams - Overall Use Support (5.6 Mb)
305(b) Streams - Swimming	Download 305(b) Streams - Swimming (1.4 Mb)
305(b) Streams - Fish Tissue Consumption	Download 305(b) Streams - Fish Tissue Consumption (0.19 Mb)
305(b) Streams - Drinking Water	Download 305(b) Streams - Drinking Water (0.19 Mb)
305(b) Streams - Aquatic Life	Download 305(b) Streams - Aquatic Life (5.24 Mb)
Springs	springs.ZIP (2.5 Mb)
Water Wells	wwells.ZIP (2.5 Mb)
Groundwater Sensitivity Regions	sensitivity.ZIP (3.7 Mb)
Karst Dye Traces	karstdye.ZIP (0.7 Mb)
Kentucky Sinkhole Drainage Areas	Download Kentucky Sinkhole Drainage Areas (80Mb)

305(b) Streams - Fish Tissue Consumption	Download 305(b) Streams - Fish Tissue Consumption
305(b) Streams - Drinking Water	Download 305(b) Streams - Drinking Water
305(b) Streams - Aquatic Life	Download 305(b) Streams - Aquatic Life
Springs	springs.ZIP (2.5 Mb)
Water Wells	wwells.ZIP (2.5 Mb)
Groundwater Sensitivity Regions	sensitivity.ZIP (3.7 Mb)
Karst Dye Traces	karstdye.ZIP (0.7 Mb)
Kentucky Sinkhole Drainage Areas	Download Kentucky Sinkhole Drainage Areas
Karst Geology (500k)	karst500k.zip (1.1 Mb)
Named Lakes--Kentucky Fish and Wildlife	KDFWR Named Lakes.zip
305(b) Lakes	Download 305(b) Lakes
Regulated Dams	dowdams.ZIP (0.3 Mb)
Wetlands Inventory	Wetlands Maps
Wetlands Inventory	NWIP Wetlands by County
Wetlands Inventory	Statewide wetlands (KY)
Wildlife Management Areas	KDFWR wmas_061603.z

[Catalog of Hydrologic Units](#)

- Layers
- dow_305b_03x07
- COUNTYMAPPICK

Water quality assessments, 305b

Attributes of dow_305b_03x07

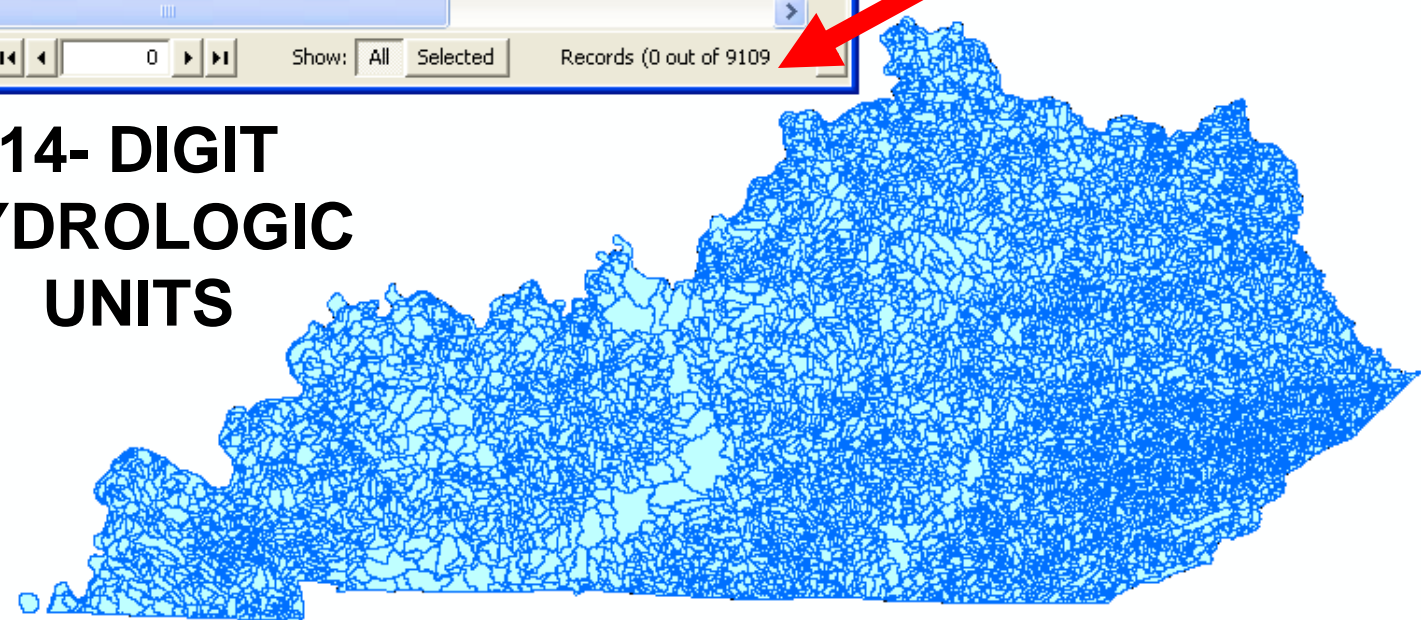
WATERSHED	BASIN	X_DIGIT_HU	COUNTY	WAH_CAH	PCR	SCR	FISH_COISU	DWS	ASSESSMENT
SaltLicking	Ohio River	5090203	KENTON CO	2-FS	3	3	3	3	2
SaltLicking	Ohio River	5090203	KENTON CO	2-FS	3	3	3	3	2
SaltLicking	Ohio River	5090203	KENTON CO	2-FS	3	3	3	3	2
SaltLicking	Ohio River	5090203	KENTON CO	2-FS	3	3	3	3	2
SaltLicking	Ohio River	5090203	KENTON CO	2-FS	3	3	3	3	2
SaltLicking	Ohio River	5090203	BOONE CO	2-FS	3	3	3	3	2
SaltLicking	Ohio River	5090203	BOONE CO	2-FS	3	3	3	3	2
SaltLicking	Ohio River	5090203	BOONE CO	2-FS	3	3	3	3	2
SaltLicking	Ohio River	5090203	BOONE CO	2-FS	3	3	3	3	2
SaltLicking	Ohio River	5090203	BOONE CO	2-FS	3	3	3	3	2
SaltLicking	Ohio River	5090203	BOONE CO	2-FS	3	3	3	3	2

Record: 1 Show: All Selected Records (0 out of 7936 Selected) Options

HUC_NUM	NAME	SQ_MILES	ACRES	HUC
05130102-060-010	Roundstone Creek	5.511	3526.89	051301C
05130102-060-040	Clear Creek	6.371	4077.2	051301C
05130102-060-050	Davis Branch	2.889	1849.26	051301C
05130102-060-020	Little Clear Creek	4.332	2772.67	051301C
05130102-060-060	Clear Creek	7.632	4884.35	051301C
05130102-050-020	Clover Bottom Creek	5.771	3693.14	051301C
05130102-030-220	Sand Lick Creek	4.089	2617.2	051301C
05130102-060-030	Roundstone Creek	16.551	10592.46	051301C
05130102-050-010	Horse Lick Creek	15.953	10209.74	051301C
05130102-030-190	Birch Lick Creek	4.971	3181.43	051301C
05130102-060-070	Scaffold Cane Branch	3.29	2105.83	051301C
05130102-050-030	Rock Lick Branch	1.842	1178.6	051301C
05130102-050-050	Gravel Lick Branch	3.926	2512.96	051301C
05130102-030-240	Elisha Branch	1.889	1209.13	051301C
05130102-060-140	Brush Creek	9.572	6126.26	051301C
05130102-030-160	Bills Branch	3.4	2175.94	051301C

- Layers
- kyhuc14a
- COUNTYMA

14- DIGIT HYDROLOGIC UNITS



Display Source Selection

Drawing Arial 10 B I U

File Edit View
Editor

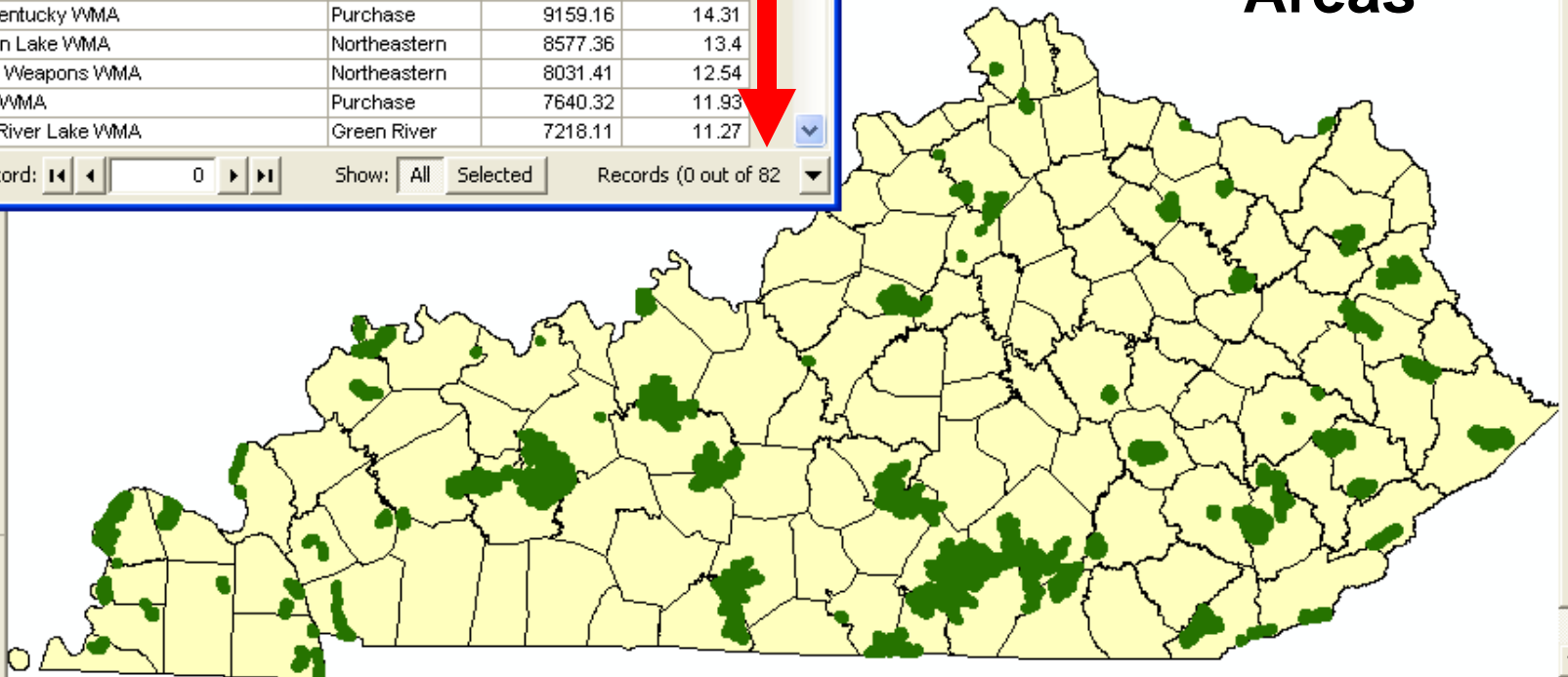
Layers
WMA
COU

WMAName	WildMgtReg	Acres_cal	SqMi_cal
Lake Cumberland WMA	Southeastern	53524.81	83.63
Peabody WMA	Green River	36214.07	56.58
Peabody WMA	Green River	28434.45	44.42
Green River Lake WMA	Southeastern	24138.46	37.71
Redbird WMA	Southeastern	24014.38	37.52
Addington Enterprises WMA	Southeastern	16993.37	26.55
Yatesville Lake WMA	Northeastern	14601.02	22.81
Fishtrap Lake WMA	Northeastern	14144.06	22.1
Beaver Creek WMA	Southeastern	13165.7	20.57
Mill Creek WMA	Southeastern	13015.64	20.33
Kentucky Ridge State Forest	Southeastern	12257.65	19.15
Paintsville Lake WMA	Northeastern	11253.98	17.58
Taylorville Lake WMA	Bluegrass	10439.79	16.31
Barren River Lake WMA	Green River	9921.88	15.5
Dewey Lake WMA	Northeastern	9450	14.76
West Kentucky WMA	Purchase	9159.16	14.31
Grayson Lake WMA	Northeastern	8577.36	13.4
Pioneer Weapons WMA	Northeastern	8031.41	12.54
Ballard WMA	Purchase	7640.32	11.93
Rough River Lake WMA	Green River	7218.11	11.27



Record: 0 Show: All Selected Records (0 out of 82)

Wildlife Management Areas



Display Source Selection

Drawing Arial 10 B I U

File Edit View Bookmarks Insert Selection Tools Window Help



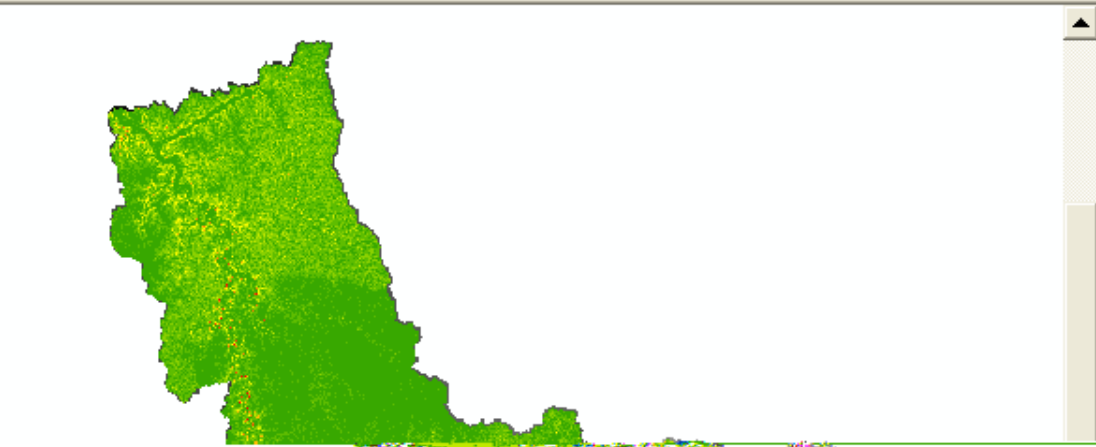
Editor Task: Create New Feature Target:



- Groundwater
- Hydrology
- Interpolation
- Local
- Map Algebra
- Math
- Multivariate
- Neighborhood
- Overlay
- Raster Creation
- Reclass
- Solar Radiation

Layers

- KYRSLOPE
 - 0 - 7.50022690
 - 7.500226908 -
 - 15.00045382 -
 - 23.12569964 -
 - 31.25094546 -
 - 38.75117236 -
 - 45.62638036 -
 - 53.12660727 -
 - 63.12690981 -
- kyrb10mdem
 - Value
 - High : 3261.56



Surface

- Aspect
- Contour
- Contour List
- Cut/Fill
- Curvature
- Hillshade
- Observer Points
- Slope**
- Viewshed
- Zonal
- Spatial Statistics Tools

Value High : 3261.56

Favorites Index Search Results Display Source Selection

Drawing Arial 10 B I U A

[KGS Home](#) > [Maps and GIS](#)

Geospatial Data Library

The Kentucky Geological Survey and other state and federal agencies have electronic maps and GIS data that you can download for your use. The KGS GIS data are in ArcView shapefiles (registered by ESRI). The files were zipped using the WinZip utility. All the KGS datasets, unless explicitly noted, are in latitude and longitude, decimal degrees, NAD 83.

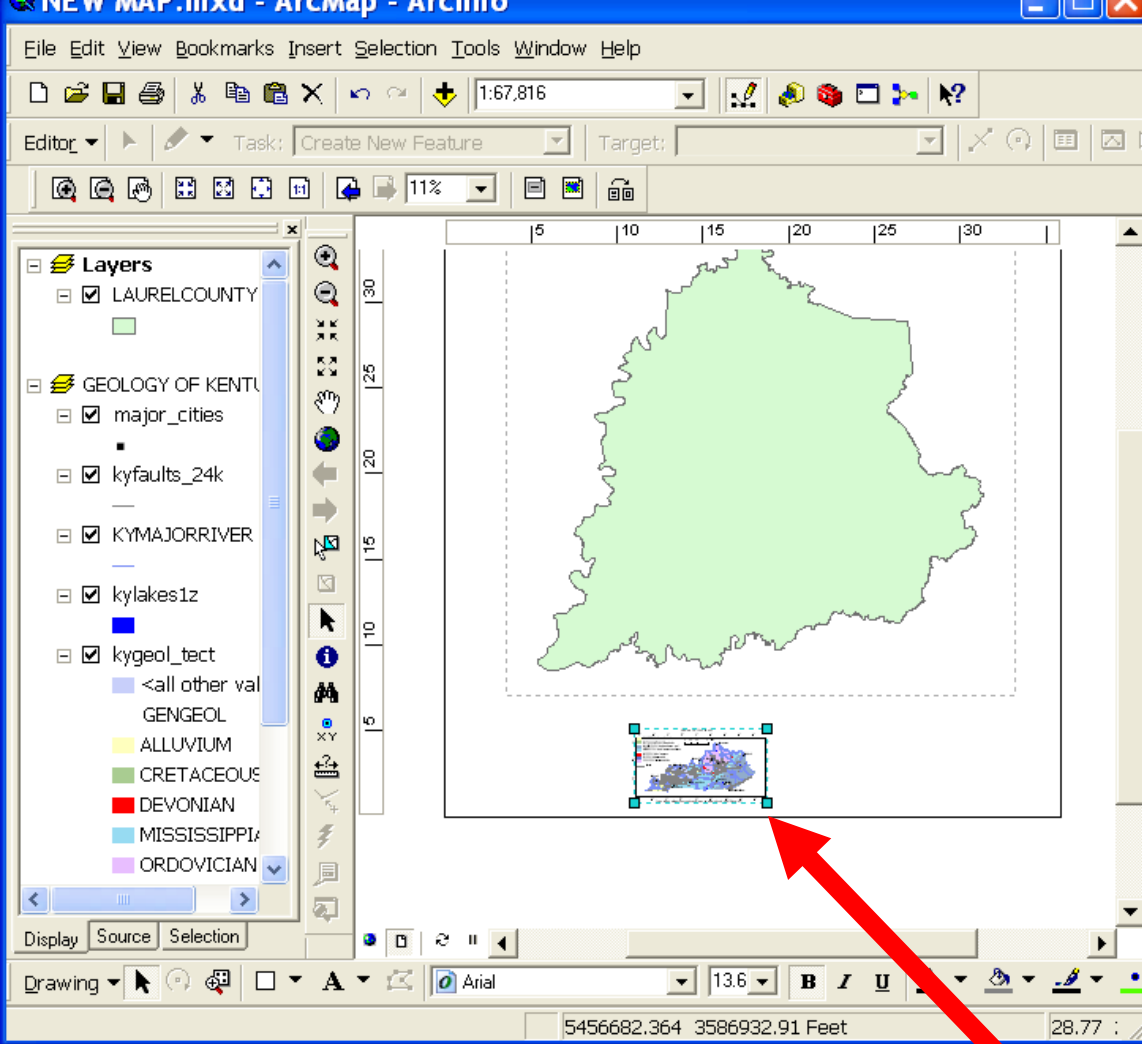
- [Kentucky Geography Network](#): Electronic warehouse of maps and GIS data from the Kentucky Geography Network.
- [Map Imagery](#): Scanned, georeferenced topographic, geologic, and other maps.
- [Elevation Data](#): Digital elevation models at various scales.
- [Political and physical boundary data](#): Maps (coverages) showing political boundaries, map indexes, regions, area development districts (ADD's), grids.
- [Geology and Soils data](#): Geologic coverages of the state, oil and gas wells, coal exploration sites.
- [Hydrology data](#): Hydrologic and watershed coverages, water wells, karst dye traces, wetlands, NHD streams in Kentucky.
- [Transportation data](#): Roads and highways in Kentucky.
- [County basemap data](#): From ESRI, TIGER/Line® files--roads, railroads, rivers, lakes, political boundaries, census statistical boundaries, etc., covering the entire United States by county or state.
- [Benchmark Data](#): National Geodetic Survey data.
- [Cohverter](#) to convert latitude/longitude in DMS to decimal degrees.

Contact Information: If you have any questions regarding the GIS information provided by the Kentucky Geological Survey, please contact [Dan Carey](#), telephone (859) 257-5500, fax (859) 257-1147, Kentucky Geological Survey, 228 Mining and Mineral Resources Building, University of Kentucky, Lexington, KY 40506-0107.

Other sites related to Kentucky GIS:

- [Kentucky Office of Geographic Information Systems](#)
- [USGS--Kentucky](#)
- [Kentucky Geography Network](#)
- [Kentucky Infrastructure Authority](#)
- [Kentucky Department of Fish and Wildlife Information System](#)





Copy from one map layout to another

No margins,
set page width,
copy

Paste, set page width

Layers

- LAURELCOUNTY

Properties

Size and Position

Size

Width: 9

Height: 9.55 in

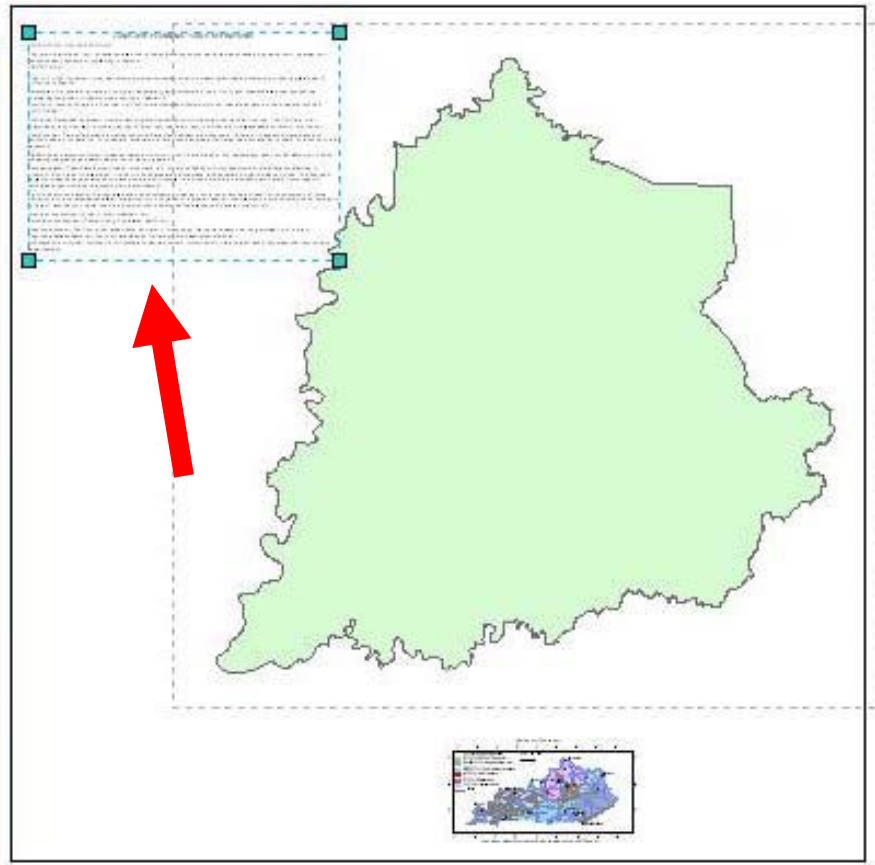
As Percentage

Preserve Aspect Ratio

Element Name

POWERPOINTS

OK Cancel Apply





[KGS Home](#)

Maps and GIS

- [GIS Data](#): Links to the best GIS data we know, whether KGS or someplace else.
- [Mapping and GIS Research](#): Summaries of KGS GIS mapping and research projects.
- [Search for Published KGS Maps and Data](#): Search for KGS publications, maps, and data on oil and gas, water, coal, etc.
- [Map and GIS Information](#): Links to all kinds of maps, GIS data, and GIS information.
- [Staff](#): List and e-mail contacts for everyone in the KGS Geospatial Analysis Section.

[Geologic Map Information Service](#)

Interactive and customizable geologic maps with links to related data.

[County Land-Use Planning Maps](#)

Links to KGS land-use planning maps for Kentucky counties.

[Internet Map Services](#)

Search for information using interactive maps on the Internet--oil and gas, water, coal, rock cores, geology, land-use and development planning.

[KGSGeoPortal](#)

Search for geographic areas in Kentucky and link to data and map web services for the same area.

[Topographic and Geologic Index Maps](#)

Index maps and links to data.

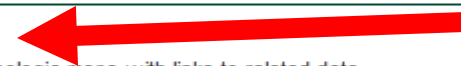
[New Mapping and GIS Products at KGS](#)

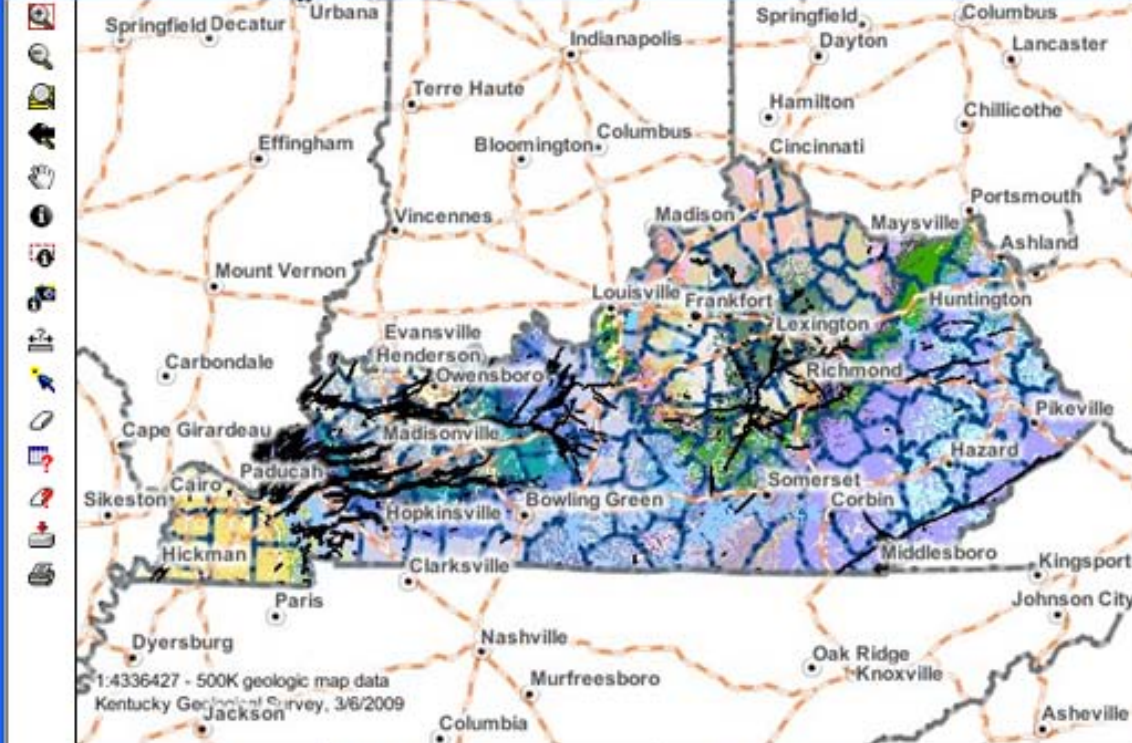
Learn about the latest map and GIS products at KGS.

[Digitally Vectorized Geologic Quadrangles \(DVGQ's\)](#)

7.5-minute geologic map data for GIS.

The external links in these pages may open in a new browser window. If a new browser window has been opened and the Back button is not available, close the new window to return to these KGS pages.





Map Legend Map Layers Geologic Information

Select a Map Layout:
[Standard Geologic Map](#)
[Original GQ Map Image](#) | about
[Dominant Lithology Map](#) | about
[Karst Potential Map](#) | about
[Petroleum Geology Map](#) | about
[Coal Information Map](#) | about

Bookmark Map:

- Customize Map:

- dimmed layers are invisible at current scale: [scale info](#)

- Geology:

- 1:500K Scale Geology (general geology) [?]
- 1:500K Geology Labels [?]
- Structure contours [?]
- Geologic Contacts (1:500K Scale) [?]
- Outcrop Traces [?]
- Coal Beds [?]
- Formal Beds [?]
- Non-Coal Beds [?]

Scale = 1:4,336,427

Utlithologic descriptions available for areas outlined in orange.

Map Scale
choose a map scale [v]

Enter a Custom Map Scale

Map Size (w x h):
half page (5.8 x 4.7 in) [v]

zoom to a location
view other KY maps (at same extent)

- [General information about this service](#)
- [Geologic maps and geologic issues in Kentucky: a citizen's guide \(pdf - 25 MB\)](#)
- [Geologic maps and geologic issues in Kentucky: a citizen's guide \(d/vu - 2 MB\)](#)

Address bar: <http://www.uky.edu/KGS/gis/index.htm>

Navigation: Back, Forward, Stop, Refresh, Home, Live Search

Convert, Select

Favorites: Free Hotmail, Web Slice Gallery, Suggested Sites

Maps and GIS Kentucky Geological Survey site

Home, RSS, Mail, Print, Page, Safety, Tools, Help



Kentucky Geological Survey

University Of Kentucky

[Search KGS](#) | [Contact KGS](#) | [KGS Home](#) | [UK Home](#)

[KGS Home](#)

Maps and GIS

- [GIS Data](#): Links to the best GIS data we know, whether KGS or someplace else.
- [Mapping and GIS Research](#): Summaries of KGS GIS mapping and research projects.
- [Search for Published KGS Maps and Data](#): Search for KGS publications, maps, and data on oil and gas, water, coal, etc.
- [Map and GIS Information](#): Links to all kinds of maps, GIS data, and GIS information.
- [Staff](#): List and e-mail contacts for everyone in the KGS Geospatial Analysis Section.

[Geologic Map Information Service](#)

Interactive and customizable geologic maps with links to related data.

[County Land-Use Planning Maps](#)

Links to KGS land-use planning maps for Kentucky counties.

[Internet Map Services](#)

Search for information using interactive maps on the Internet--oil and gas, water, coal, rock cores, geology, land-use and development planning.

[KGSGeoPortal](#)

Search for geographic areas in Kentucky and link to data and map web services for the same area.

[Topographic and Geologic Index Maps](#)

Index maps and links to data.

[New Mapping and GIS Products at KGS](#)

Learn about the latest map and GIS products at KGS.

[Digitally Vectorized Geologic Quadrangles \(DVGQ's\)](#)

7.5-minute geologic map data for GIS.

The external links in these pages may open in a new browser window. If a new browser window has been opened and the Back button is not available, close the new window to return to these KGS pages.

Basemaps:

- [The Commonwealth Map - Base Map \(KYDGI\)](#)
- [The Commonwealth - Kentucky Explorer \(KYDGI\)](#)
- [The National Map Viewer \(KGS\)](#)
- [Incorporated Cities \(KYDGI\)](#)
- [Geodetic Control in Kentucky \(KYDGI\)](#)
- [+ DEM Downloads \(KYDGI\)](#)



Geology:

- [KGS Geologic Map Service \(KGS\)](#)
- [KGS Lithologic Map \(KGS\)](#)
- [Core and Sample Holdings Map \(KGS\)](#)

Energy:

- non-mining energy related information*
- [Coal Information Map \(KGS\)](#)
- [Oil and Gas Wells Map \(KGS\)](#)

Mining:

- [Available Coal Mine Maps / Active Mines \(KMMI\)](#)
- [Known Coal Mined Out Areas / Historical Mines \(KMMI\)](#)
- [Surface Mining Information \(KDNR-DSMRE\)](#)

Water:

- [Flood Prone Areas \(KYDGI\)](#)
- [Groundwater Map Service \(KGS\)](#)
- [Groundwater-Quality Map Service \(KGS\)](#)
- [Hydrology of Kentucky \(USGS\)](#)
- [Karst Potential Map \(KGS\)](#)
- [KY e-Clearinghouse Mapping Portal \(WRIS\)](#)
- [KY Watershed Watch Sampling Map/Database \(KRWW\)](#)
- [Proposed Water Infrastructure Projects \(WRIS\)](#)
- [Surface Mine Water Monitoring Data \(KDNR-DSMRE\)](#)
- [Wastewater Mapping Portal \(WRIS\)](#)
- [Water Infrastructure \(WRIS\)](#)
- [Water Management Planning \(WRIS\)](#)
- [Watershed Modeling Information Portal \(KYDGI\)](#)
- [Watershed Viewer \(EPPC-GIS\)](#)

Transportation:

- [Active Six Year Plan Projects \(KYTC\)](#)
- [HIS Interactive Planning Map \(KYTC\)](#)

Land-Use Planning:

- services that are specifically directed towards land-use planning*
- [Land-Use Planning \(KGS\)](#)

Counties:

- services that serve Kentucky counties (data may be limited to the specific county only)*
- [Barren County PVA \(KYDGI\)](#)
- + Boone County
- [Caldwell County PVA \(KYDGI\)](#)
- [Georgetown-Scott County \(KYDGI\)](#)
- [Hardin County PVA \(KYDGI\)](#)

Recreation:

- [GAP Land Stewardship \(KYFWIS\)](#)
- [Hunting and Fishing Access Sites \(KYFWIS\)](#)
- [State Parks \(KYPARKS\)](#)
- [Trails \(KYDGI\)](#)

The Commonwealth Map

Kentucky's Contribution to the National Map



- LAYERS**
- All Layers
 - Thematic Layers
 - Schools
 - Hospitals
 - Structure Points
 - Structures (Barren)
 - Addressable Structure
 - 2006 Image Grid
 - Base Map
 - Cities
 - Populated Places
 - State Roads
 - Local Roads
 - County Boundaries
 - Time Zone Boundary
 - Hydrography
 - Ohio River
 - Lakes
 - Incorporated City Bour
 - Counties
 - Base Imagery
 - Shaded Relief
 - LANDCOVER
 - SPOT 10 Meter
 - KRGs
 - NAIP_FSA_2008
 - NAIP_FSA_2006
 - NAIP_FSA_2004
 - Mayfield WS09
 - Murrav WS09



This site was created and is hosted by COT/DGI (2009)

0 64mi

Zoom In

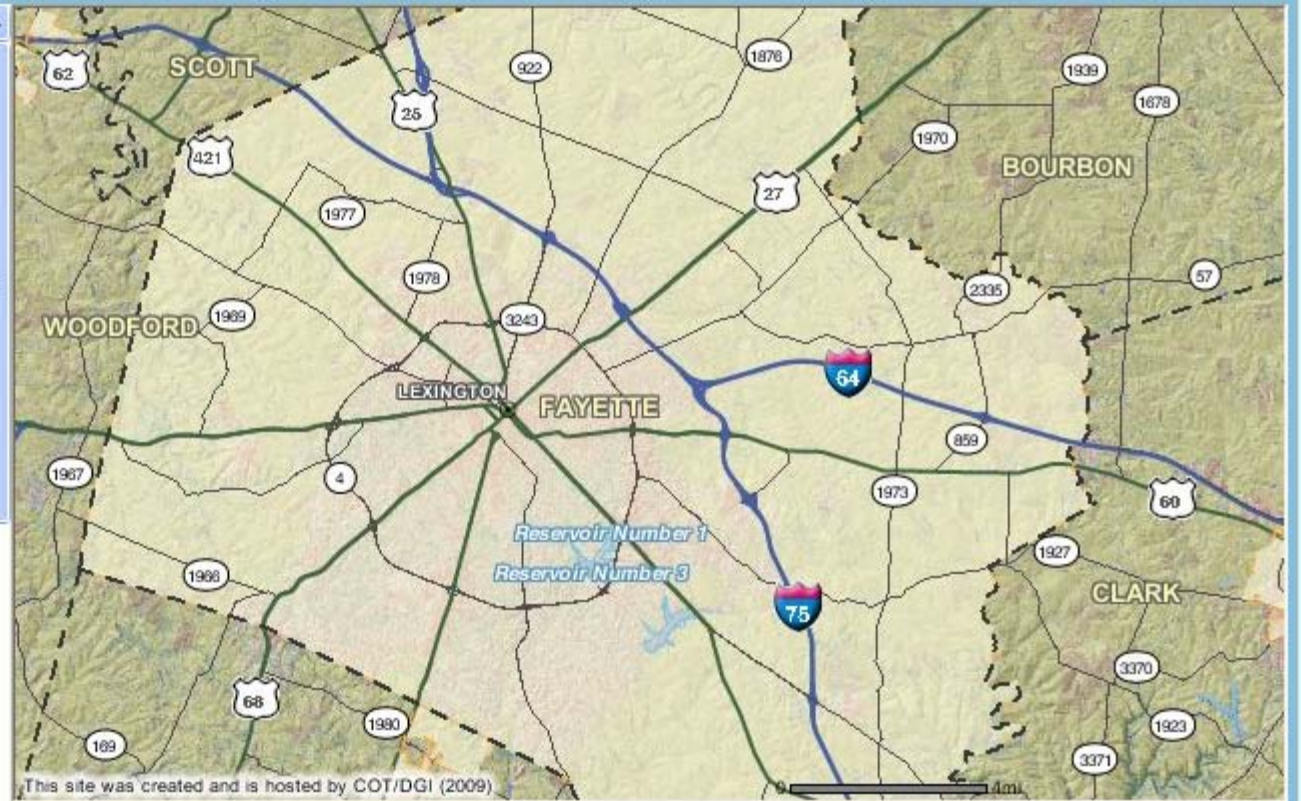
Zoom to Scale 4072370

The Commonwealth Map

Kentucky's Contribution to the National Map



- LAYERS**
- All Layers
 - Thematic Layers
 - Schools
 - Hospitals
 - Structure Points
 - Structures (Barren)
 - Addressable Structure
 - 2006 Image Grid
 - Base Map
 - Cities
 - Populated Places
 - State Roads
 - Local Roads
 - County Boundaries
 - Time Zone Boundary
 - Hydrography
 - Ohio River
 - Lakes
 - Incorporated City Bour
 - Counties
 - Base Imagery
 - Shaded Relief
 - LANDCOVER
 - SPOT 10 Meter
 - KRGS
 - NAIP_FSA_2008
 - NAIP_FSA_2006
 - NAIP_FSA_2004
 - Mayfield WS09
 - Murrav WS09

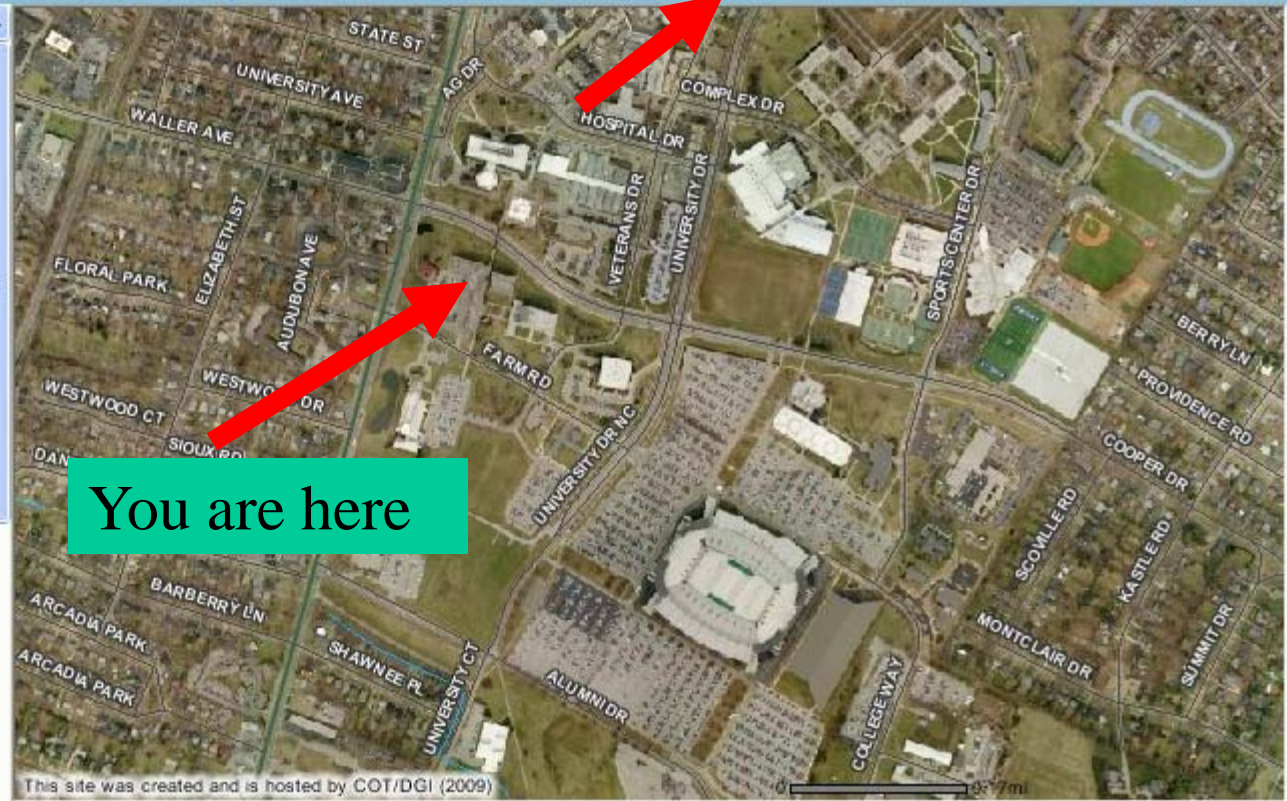


The Commonwealth Map

Kentucky's Contribution to the National Map



- LAYERS**
- All Layers
 - Thematic Layers
 - Schools
 - Hospitals
 - Structure Points
 - Structures (Barren)
 - Addressable Structure
 - 2006 Image Grid
 - Base Map
 - Cities
 - Populated Places
 - State Roads
 - Local Roads
 - County Boundaries
 - Time Zone Boundary
 - Hydrography
 - Ohio River
 - Lakes
 - Incorporated City Bour
 - Counties
 - Base Imagery
 - Shaded Relief
 - LANDCOVER
 - SPOT 10 Meter
 - KRGs
 - NAIP_FSA_2008
 - NAIP_FSA_2006
 - NAIP_FSA_2004
 - Mayfield WS09
 - Murrav WS09



You are here

Mining:

- Available Coal Mine Maps / Active Mines (KMMI)
- Known Coal Mined Out Areas / Historical Mines (KMMI)
- Surface Mining Information (KDNR-DSMRE)

Water:

- Flood Prone Areas (KYDGI)
- Groundwater Map Service (KGS)
- Groundwater Springs Data (KGS-tabular)
- Groundwater Well Data (KGS-tabular)
- Groundwater-Quality Map Service (KGS)
- Hydrology of Kentucky (USGS)
- Karst Potential Map (KGS)
- KY e-Clearinghouse Mapping Portal (WRIS)
- KY Watershed Watch Sampling Map/Database (KRWW)
- Proposed Water Infrastructure Projects (WRIS)
- Surface Mine Water Monitoring Data (KDNR-DSMRE)
- Wastewater Mapping Portal (WRIS)
- Water Infrastructure (WRIS)
- Water Management Planning (WRIS)
- Watershed Modeling Information Portal (KYDGI)
- Watershed Viewer (EPPC-GIS)

Transportation:

- Active Six Year Plan Projects (KYTC)
- Geotechnical Reports (KYTC-tabular)
- HIS Interactive Planning Map (KYTC)

Land-Use Planning:

- services that are specifically directed towards land-use planning
- Land-Use Planning (KGS)

Counties:

- services that serve Kentucky counties (data may be limited to the specific county only)
- Barren County PVA (KYDGI)
- + Boone County
 - Caldwell County PVA (KYDGI)
 - Georgetown-Scott County (KYDGI)
 - Hardin County PVA (KYDGI)
- Lexington-Fayette County:
 - Basemap (LFUCG)
 - Zoning (LFUCG)
 - Nelson County PVA (KYDGI)
 - Pendelton County PVA (KYDGI)
 - Spencer County PVA (KYDGI)
 - Trimble County PVA (KYDGI)
 - Wayne County PVA (KYDGI)

Recreation:

- GAP Land Stewardship (KYFWIS)
- Hunting and Fishing Access Sites (KYFWIS)
- State Parks (KYPARKS)
- Trails (KYDGI)



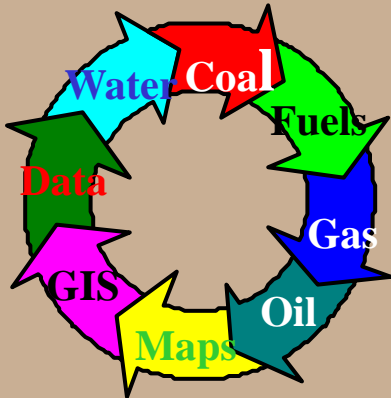
ArcGIS classes
mcrawford@uky.edu

GIS at KGS

Dan Carey -- carey@uky.edu

kgs.uky.edu/kgsweb/download/nov18.pptx

kgs.uky.edu/kgsweb/download/nov18.pdf



Kentucky Geological Survey
The University of Kentucky

"Earth Resources—Our Common Wealth"

