

LOOK OUT!

For Invasive Green Crab

The green crab is invading up the Pacific West Coast from California through British Columbia towards Alaska.



How do I identify a green crab?



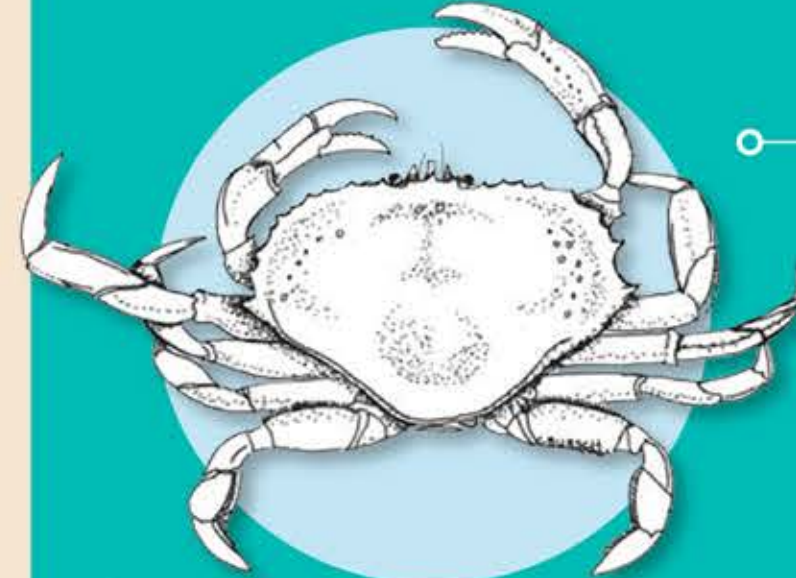
Find the Five Spines!

These 5-spined crabs come in a variety of colors. The best way to identify green crab is to count the 5 spines behind the eye on each side of the shell.

When you're out on the beach, look for these invasive crabs.

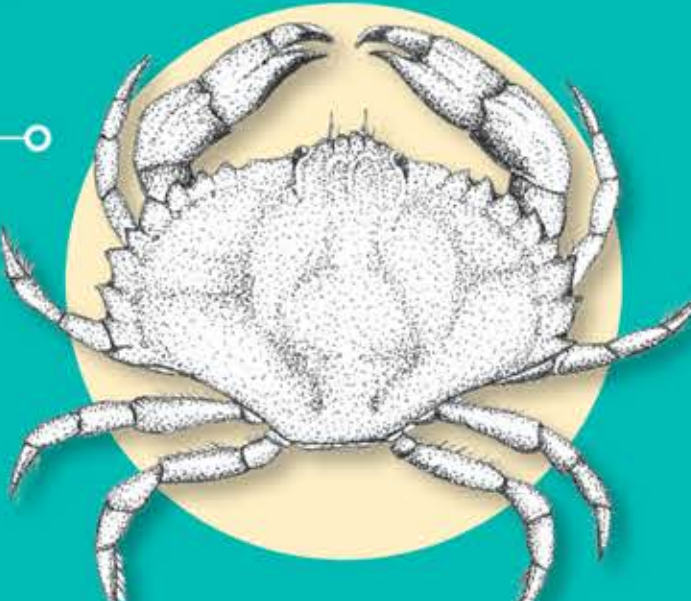


Top: A green crab
Left: Male underside V-shaped abdomen
Lower: Female underside U-shaped abdomen



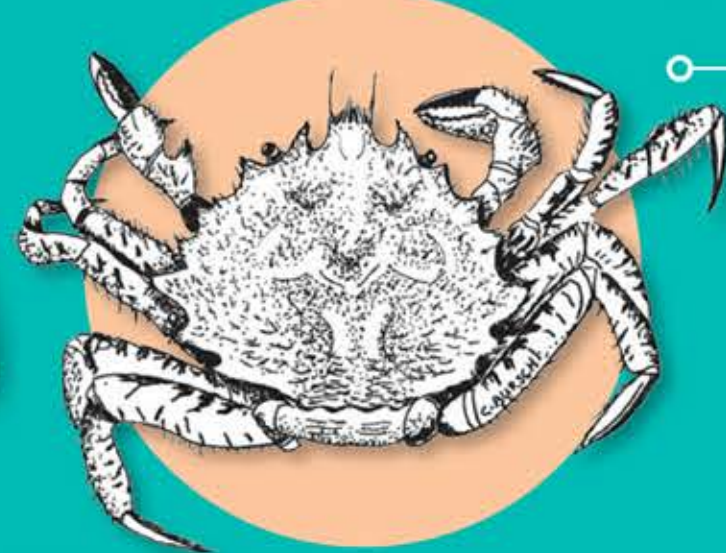
Dungeness crab

- Uneven oval shell with 10 spines on each side
- Narrow frontal area with 5 unequal spines
- Light-colored leg tips



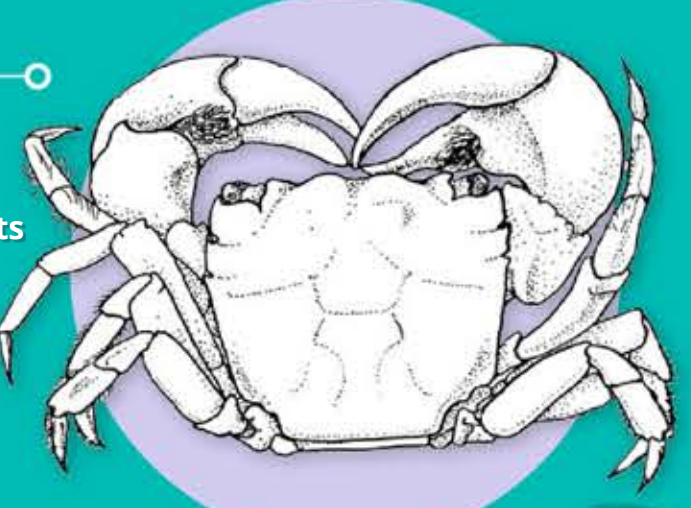
Red rock crab

- Black tipped claws
- Fan shaped shell
- Brick red color



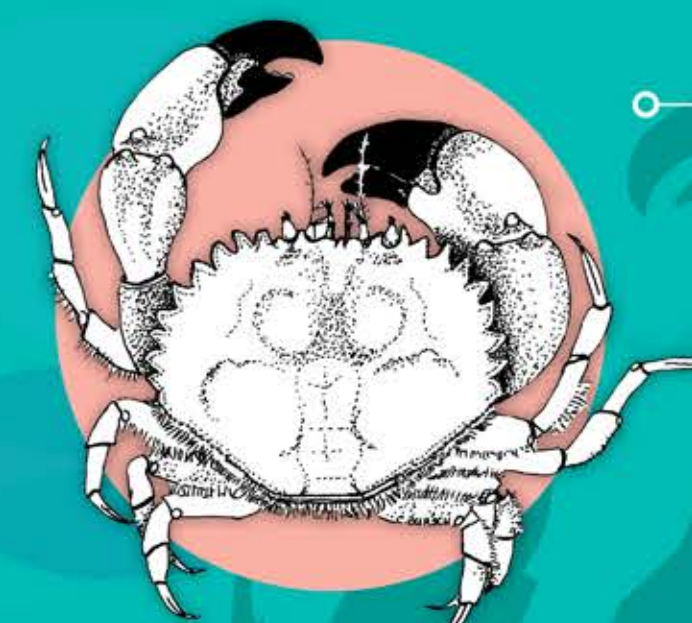
Helmet or horse crab

- Large jagged spines on each side of the shell
- Entire shell covered with stiff hairs
- Frontal area extends past eyes



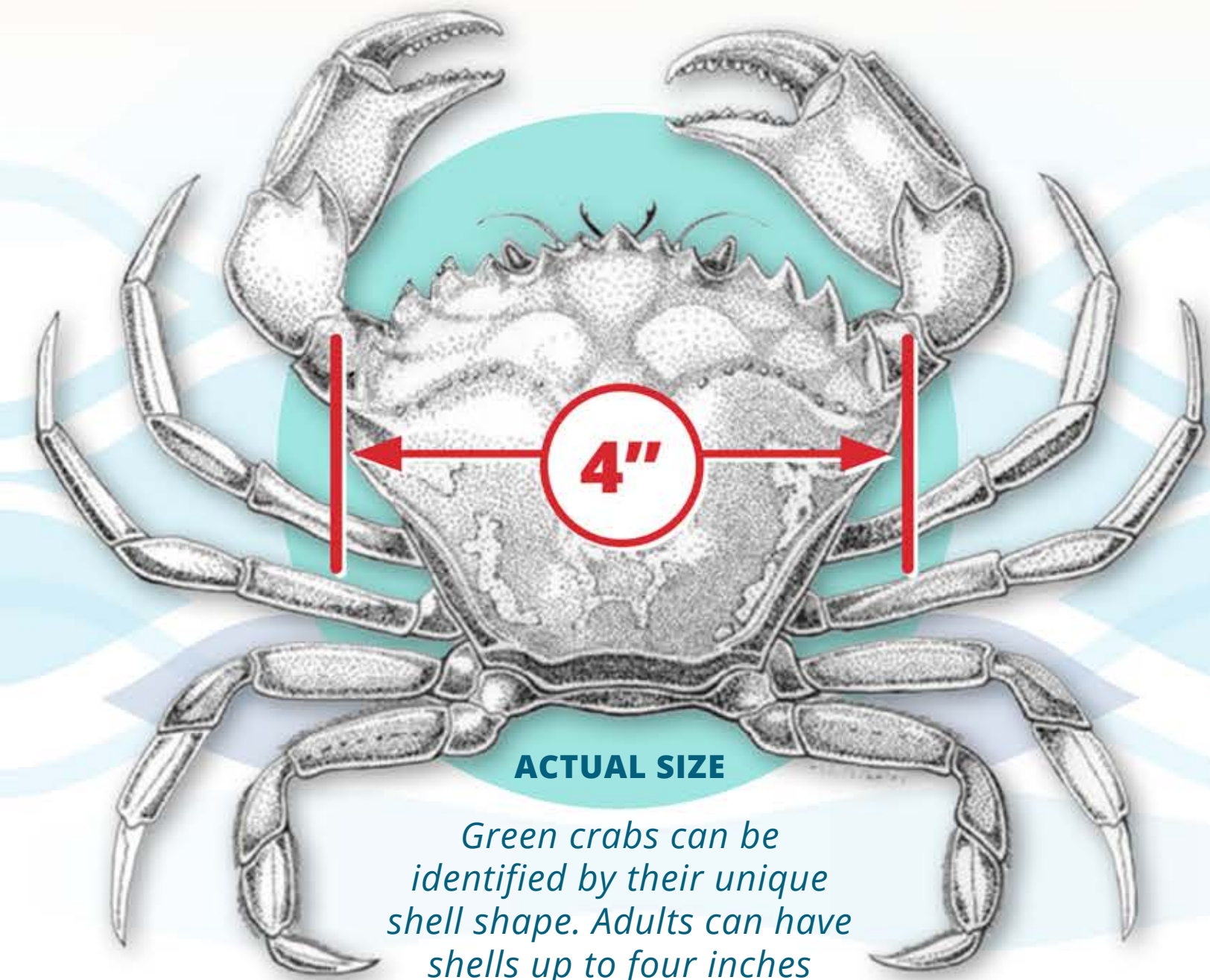
Hairy shore crab

- Rounded claws, often w/ fleshy tufts, typically no spots
- Walking legs with fine sparse hairs
- Square-shaped shell
- Variable color: green, brown, yellow, white



Pygmy Cancer crab

- Large, black-tipped claws
- Hairy walking legs
- Color brownish red



Green crabs can be identified by their unique shell shape. Adults can have shells up to four inches across in width.

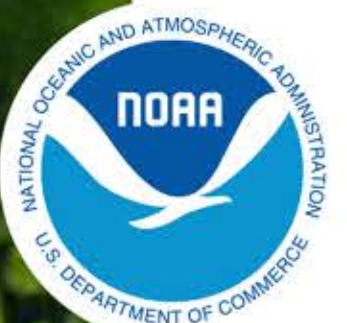
Common crabs native to Alaska

FIND IT If you find a green crab, do not throw it back alive!

KEEP IT Keep it in a container with the date and location you found it.

FREEZE IT Freeze it or preserve it with rubbing alcohol.

CALL US! Call toll free statewide **1-877-INVASIV**. We need the collected crab to confirm its identification.



NOAA FISHERIES



If you are interested in learning more about these invader crabs, scan this QR code with your phone or visit:



<https://www.fisheries.noaa.gov/alaska/habitat-conservation/look-out-invasive-crab>

Illustrations by Catie Bursch/KBNERR/Washington Sea Grant, and Conrad Field/KBNERR