



**NOAA
FISHERIES**

Pacific Coast Groundfish Fishery

Compliance Guide for Federal Non-Trawl Logbook Requirement

This document serves as a Small Entity Compliance Guide, complying with section 212 of the Small Business Regulatory Enforcement Fairness Act of 1996.

Federal Non-Trawl Logbook Requirement

This final rule implements the federal non-trawl logbook requirement in the Pacific Coast Groundfish Fishery published on October 3, 2022.

Regulations implemented in this rule are effective January 1, 2023.

To learn more about the federal non-trawl logbook requirement, please visit our website at: <https://www.fisheries.noaa.gov/action/2022-federal-logbook-requirement-pacific-coast-groundfish-non-trawl-fisheries>

For questions on the rule or this compliance guide, please contact Lynn Massey at lynn.massey@noaa.gov

For general groundfish questions, please call the Groundfish Branch at 206-526-6140.

For questions about groundfish permits, please call the Permits Branch at 206-526-4353.



Frequently Asked Questions

Q: What is the federal Non-Trawl Logbook requirement?

A: On October 3, 2022, NOAA Fisheries published a final rule that requires certain vessels using non-trawl gear in the Pacific Coast Groundfish fishery to complete and submit a non-trawl logbook via an electronic application to NOAA Fisheries, starting in 2023. These new regulations are being implemented in accordance with a recommendation from the Pacific Fishery Management Council, first recommended in 2008 and reaffirmed in March 2022.

Q: Who will the non-trawl logbook requirement apply to?

A: This federal requirement will apply to vessels that participate in the following groundfish non-trawl sectors:

- directed open access (*i.e.*, open access vessels that target fish for groundfish)
- limited entry fixed gear (*i.e.*, the primary sablefish fishery and the trip limit fisheries)
- vessels that gear switch under the Shorebased Trawl Individual Fishing Quota Program (often referred to as “gear switchers”)

This rulemaking does not apply to those vessels that participate in non-groundfish fisheries, but catch/retain groundfish incidentally (e.g., the salmon troll and directed halibut fisheries).



**NOAA
FISHERIES**

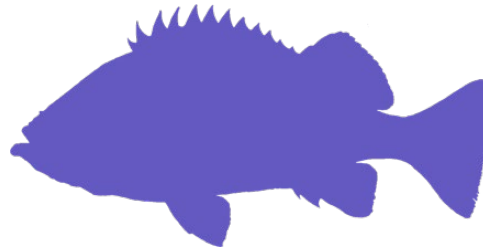
Frequently Asked Questions

Q: Where will this federal logbook requirement apply?

A: This logbook requirement applies to vessels fishing in the U.S. exclusive economic zone (EEZ, *i.e.*, 3-200 nautical miles (nm)), interchangeably referred to as “federal waters”) seaward of California, Oregon, and Washington. Vessels that fish exclusively in state waters (*i.e.*, inside 3 nm) are not required to submit logbook entries.

Q: What if I fish in both federal and state waters on the same fishing trip?

A: If a vessel fishes in both federal (3-200 nm) and state waters (3 nm or shoreward) on a fishing trip, then the authorized representative of the vessel is only required to submit a logbook entry for fish retained and discarded in the EEZ. However, NOAA Fisheries will accept logbook entries for the entire fishing trip.



NOAA
FISHERIES

Frequently Asked Questions

Q: What information will be collected in the non-trawl logbook?

A: The non-trawl logbook will collect set-level information on catch, discards, fishing location, fishing depth, gear configuration, and sale.

Q: What will this information be used for?

A: NMFS, the Council, the Groundfish Management Team, the Northwest Fisheries Science Center, and the Pacific States Marine Fisheries Commission (PSMFC) will use the data obtained from the logbook submissions for analyses of catch locations and bycatch hotspots, spot verification of fish tickets, analyses on gear usage by area, stock assessments, and a variety of other applications. Additionally, federal groundfish regulations require vessels to make the logbook data available to fishery observers under the West Coast Groundfish Observer Program (WCGOP). The observers collect biological samples and pair these samples with logbook data describing vessel position, target, depth, and retained catch. These data are not always accessible from other sources such as equipment on the ship. Finally, the logbook data may also be used by NOAA's Office of Law Enforcement (OLE) and the U.S. Coast Guard in investigations.



NOAA
FISHERIES

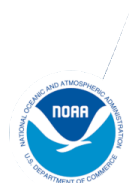
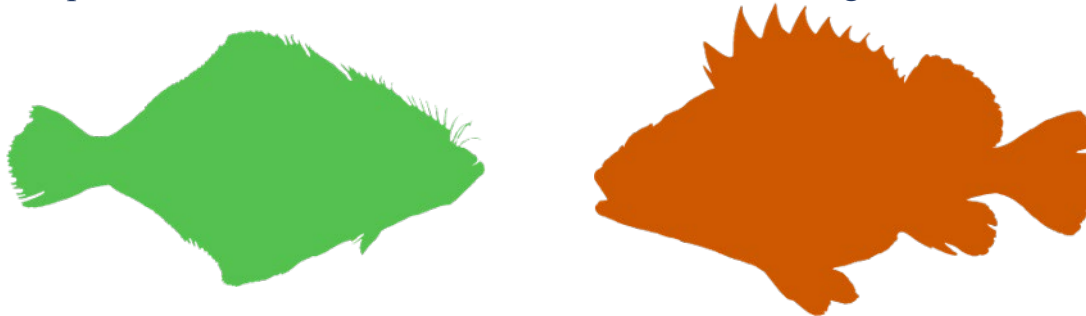
Frequently Asked Questions

Q: Am I required to record this information at sea?

A: Most data will be required to be entered into the electronic logbook application while the vessel is fishing, with only the buyer information recorded upon landing. Per the new regulations, vessels have two hours from the time of setting gear to record set time and location, and four hours from the time of retrieving gear to record retrieval time and location. The 2-hour and 4-hour rules will be enforced by NOAA's OLE during at-sea inspections.

Q: How often do I need to submit a logbook entry?

A: An electronic logbook entry will be required for each individual fishing trip. Submission of electronic logbook data in the application would be required within 24 hours of landing. Exceptions will be made for vessels that set and retrieve gear on different fishing trips.



**NOAA
FISHERIES**

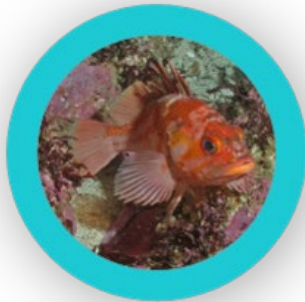
Frequently Asked Questions

Q: Where can I download the electronic logbook application?

A: The PSMFC has developed an electronic logbook application which is now available for download on smartphones (IOS or Android devices). In order to download the application, please visit the PSMFC's website at:

<https://www.psmfc.org/program/logbooks?pid=17>

If you have technical difficulties downloading the electronic logbook or making an account, please email the PSMFC at: FedElog@psmfc.org



Frequently Asked Questions

Q: What species should I record?

A: Fishermen are required to record both catch and discards for any groundfish species managed under the Pacific Coast Groundfish Fishery Management Plan (FMP). Fishermen will not be required to record ecosystem component species or non-groundfish species, either retained or discarded. See pages 15 through 17 of the Pacific Coast Groundfish FMP for a complete list of species.

The Pacific Coast Groundfish FMP is available online at:

<http://www.pcouncil.org/documents/2022/08/pacific-coast-groundfish-fishery-management-plan.pdf/>



Frequently Asked Questions

Q: How do I sort my catch?

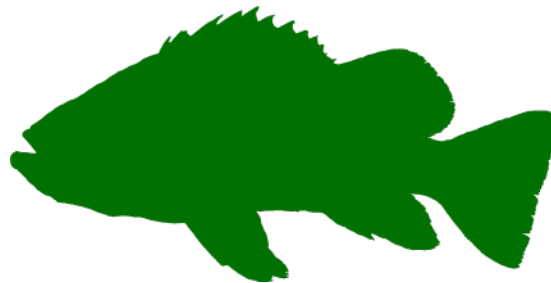
A: Fishermen are required to sort their catch according to the standard regulations for their respective sector.

Sorting requirements for the Limited Entry Fixed Gear and IFQ gear switching sectors can be found at §660.230(c):

<https://www.ecfr.gov/current/title-50/chapter-VI/part-660#660.230>

Sorting requirements for the open access sector can be found at §660.330(c):

<https://www.ecfr.gov/current/title-50/chapter-VI/part-660#660.330>



When to Record Time and Fishing Location - Bottom Longline and Pot Gear

Bottom Longline

- **Time:** Record the time the gear was set and the time the gear was retrieved for every set.
- **Location:** Record the latitude and longitude for every set.

Pot Gear

- **Time:** Record the time the gear was set and the time the gear was retrieved for every set.

If fishing a string of pots, record the time the first pot went in the water and the time the last pot was retrieved.

- **Location:** Record the latitude and longitude for every set. If fishing a string of pots, record the latitude and longitude of the first and last pot on the string.



When to Record Time and Fishing Location - Other Gear Types

Other Gear Types

If you are *not* using traditional bottom longline or pot gear, then you are not required to record the time and location of each individual set. Many fishermen make hundreds of sets per fishing trip, depending on the gear type being fished (e.g., rod and reel).

- **Defining a set:** In these scenarios, a set will be defined by generic fishing location, not by each piece of gear set in the water. Start recording information for a new set if one of the following occur:
 - The vessel moves to a distinguishably different fishing location (e.g., a new reef); this is a judgement call made by the fishing crew; or
 - The vessel moves to a different fishing location greater than one nautical mile away
- **Time:** Record the time the first hook went in the water, and the time the last hook was retrieved for each fishing location.
- **Location:** Record the latitude and longitude of each fishing location, subject to the above set definition.

