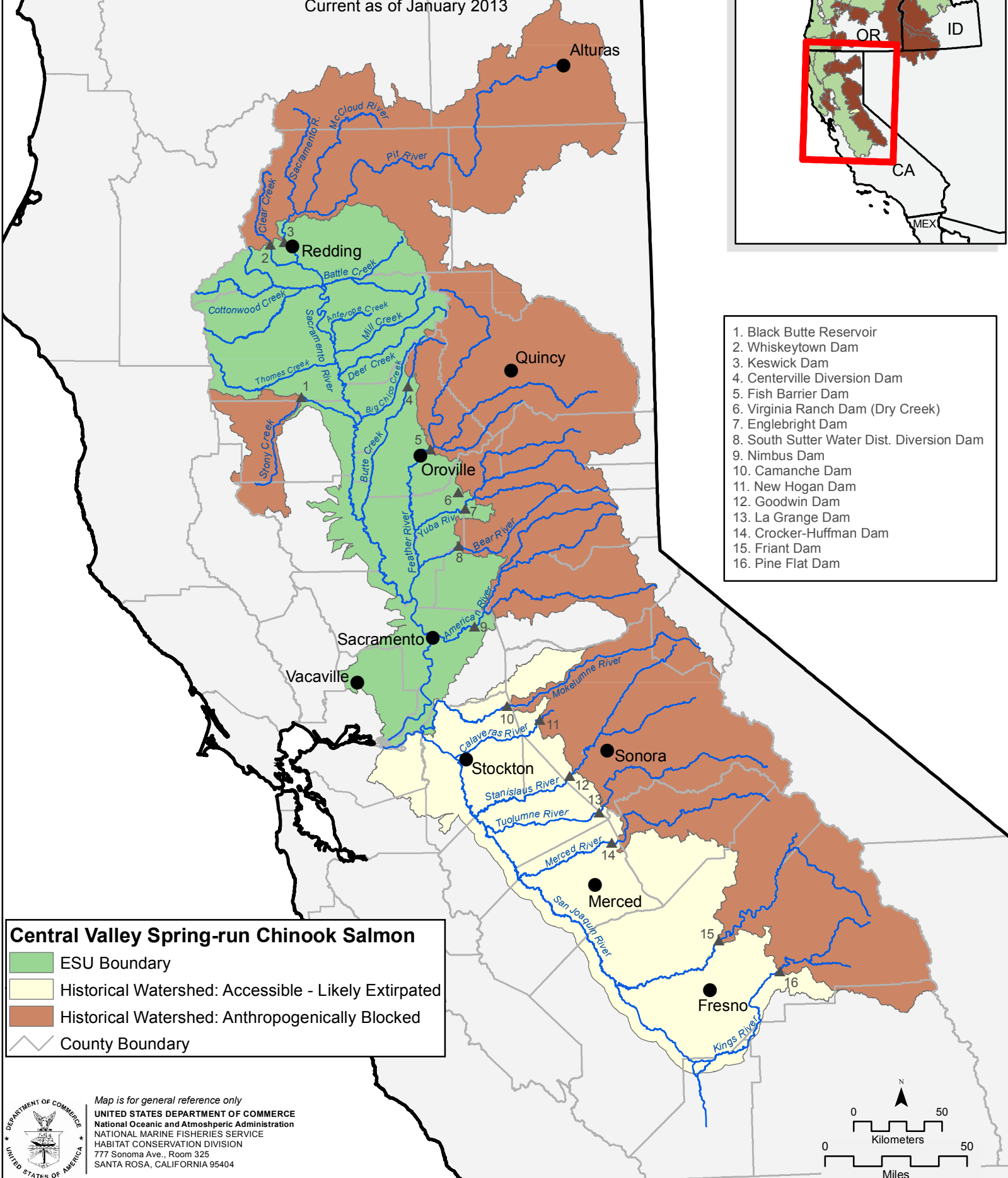
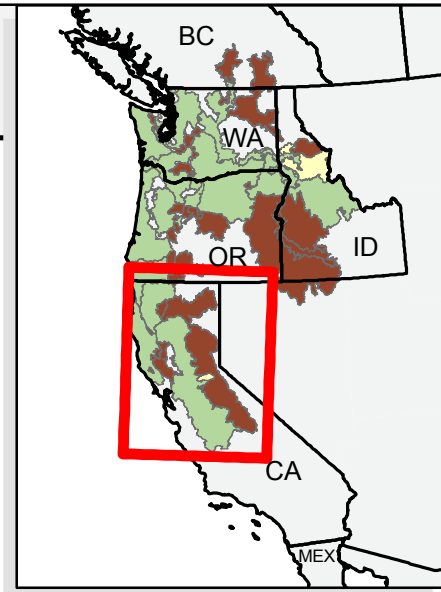




# Central Valley Spring-run Chinook Salmon

## Evolutionarily Significant Unit

Current as of January 2013



1. Black Butte Reservoir
2. Whiskeytown Dam
3. Keswick Dam
4. Centerville Diversion Dam
5. Fish Barrier Dam
6. Virginia Ranch Dam (Dry Creek)
7. Englebright Dam
8. South Sutter Water Dist. Diversion Dam
9. Nimbus Dam
10. Camanche Dam
11. New Hogan Dam
12. Goodwin Dam
13. La Grange Dam
14. Crocker-Huffman Dam
15. Friant Dam
16. Pine Flat Dam

**Central Valley Spring-run Chinook Salmon**

- ESU Boundary
- Historical Watershed: Accessible - Likely Extirpated
- Historical Watershed: Anthropogenically Blocked
- County Boundary

