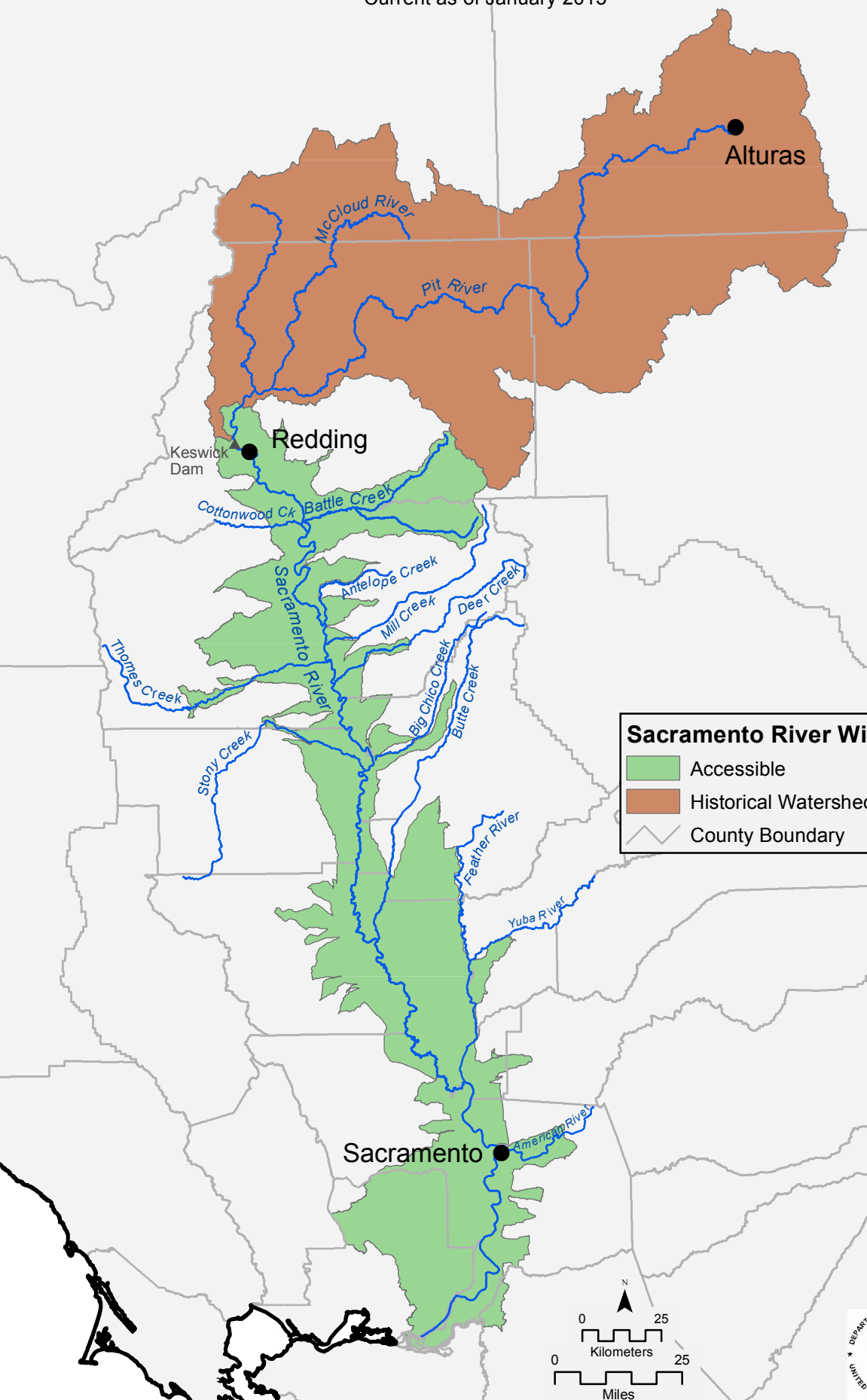
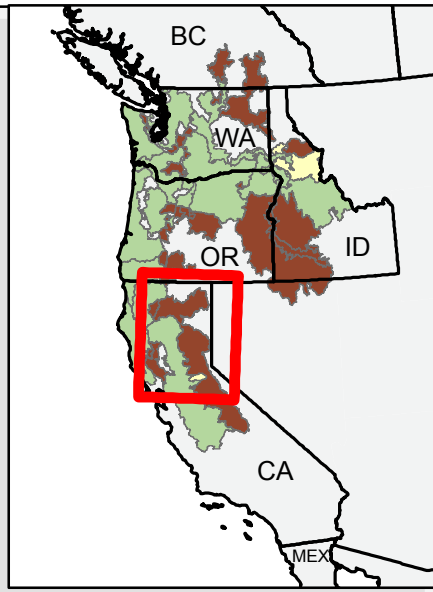




Sacramento River Winter-run Chinook Salmon

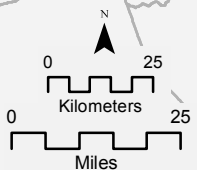
Evolutionarily Significant Unit

Current as of January 2013



Sacramento River Winter-run Chinook Salmon

- Accessible
- Historical Watershed: Anthropogenically Blocked
- County Boundary



Map is for general reference only
 UNITED STATES DEPARTMENT OF COMMERCE
 National Oceanic and Atmospheric Administration
 NATIONAL MARINE FISHERIES SERVICE
 HABITAT CONSERVATION DIVISION
 777 Sonoma Ave., Room 325
 SANTA ROSA, CALIFORNIA 95404