

**Contributing Authors and Institutions**

R. D. Müller, Department of Geology and Geophysics, Building 905,  
University of Sydney, N.S.W. 2006, Australia  
E-mail: dmuller@text.oz.au

W. R. Boyd, Geological Survey of Canada, 1 Observatory Crescent,  
Ottawa, ON, K1A 0Y7, Canada  
E-mail: wboyd@gsc.slu.ca

J. Y. Royer, Lab. de Géochimie, Océan, La Digue, B.P. 48, 68230  
Vieljeux, Cedex, France  
E-mail: royero@cea.fr

L. M. Colgan, Institute for Geophysics, University of Texas, 3701  
Meyer, Richardson, Austin, TX, 78799-8345  
E-mail: lcolgan@ig.utexas.edu

J. G. Sclater, Scripps Institution of Oceanography, UCSD, 9500  
Gilman Drive, La Jolla, CA 92037-0223  
E-mail: sclater@ucsd.edu

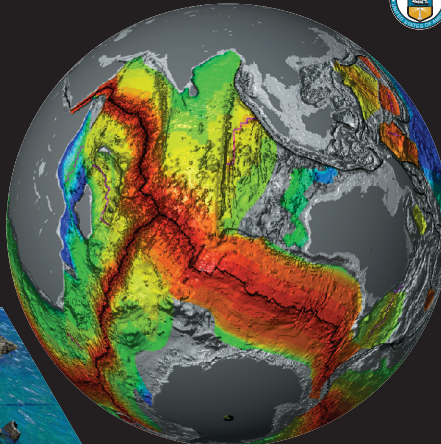
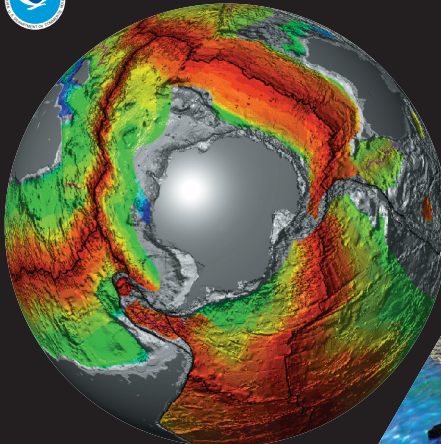
**A published reference for the age grid is:**  
Müller, R.D., Royer, W.R., Sclater, J.G., Colgan, L.M., and Sclater, J.G.,  
A global age map of the ocean floor, 303 Reference Series 93-30, Scripps  
Institution of Oceanography.

**For additional copies or information about Report MGG-12, contact:**  
Peter S. Dyer,  
NOAA NESDIS, NESDC, Mail Code 5023,  
Boulder, CO 80503-3128  
E-mail: peterdyer@noaa.gov

The color image representing crustal ages was created from a digital age grid of the ocean floor with a grid node interval of 0.1 degrees using a self-consistent set of global tectonics and associated plate reconstruction poles. The age at each grid node was determined by linear interpolation between adjacent isochrons in the direction of spreading. Ages for ocean floor between the oldest identified magnetic anomalies and continental crust were interpolated by estimating the ages of passive continental margin segments from geological data and published plate models. The quality of the grid is subject to variations depending on data coverage. The crustal age coloration was then applied to relief images derived from NGDC topographic data. Light gray areas are sediment-covered continental shelf materials; the darker gray colors indicate land. Age-color overlay images by R. Dennis Mueller, University of Sydney, combined age-relief images by Peter W. Sloan, NOAA NESDIS NGIC.

**Age of the Ocean Floor**  
World Data Center-A for Marine Geology and Geophysics Report MGG-12 (1996)  
Published by the National Geophysical Data Center

U.S. Department of Commerce  
Michael Kantor, Secretary  
National Oceanic and Atmospheric Administration  
D. James Baker, Undersecretary for Ocean and Atmosphere  
National Environmental Satellite, Data, and Information Service  
Robert S. Wynn, Assistant Administrator for Satellite and Information Services  
National Geophysical Data Center  
Michael S. Longbridge, Acting Director

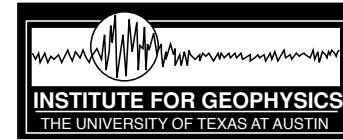




University of Sydney



Department of Geology  
and Geophysics



### *Contributing Authors and Institutions*

R. D. Mueller, Department of Geology and Geophysics, Building F05,  
University of Sydney, N.S.W. 2006, Australia  
(e-mail: dietmar@es.su.oz.au)

W. R. Roest, Geological Survey of Canada, 1 Observatory Crescent,  
Ottawa ON, K1A 0Y3, Canada  
(e-mail: roest@agg.emr.ca)

J.-Y. Royer, Lab. de Géodynamique, O.O.V., La Darse, B.P. 48, 06230  
Villefranche Sur Mer, France  
(e-mail: royer@es.su.oz.au)

L. M. Gahagan, Institute for Geophysics, University of Texas, 8701  
Mopac Boulevard, Austin, TX 78759-8345  
(e-mail: lisa@utig.utexas.edu)

J. G. Sclater, Scripps Institution of Oceanography, UCSD, 9500  
Gilman Drive, La Jolla, CA 92093-0215  
(e-mail: sclater@bullard.ucsd.edu)

**A published reference for the age grid is:**

Mueller, R.D., Roest, W.R., Royer, J.-Y., Gahagan, L.M., and Sclater, J.G.,  
**A digital age map of the ocean floor.** SIO Reference Series 93-30, Scripps  
Institution of Oceanography.

**For additional copies or information about Report MGG-12, contact**

Peter W. Sloss  
NOAA-NESDIS-NGDC Mail Code E/GC3  
325 Broadway  
Boulder, CO 80303-3328

The color image representing crustal ages was created from a digital age grid of the ocean floor with a grid node interval of 0.1 degrees using a self-consistent set of global isochrons and associated plate reconstruction poles. The age at each grid node was determined by linear interpolation between adjacent isochrons in the direction of spreading. Ages for ocean floor between the oldest identified magnetic anomalies and continental crust were interpolated by estimating the ages of passive continental margin segments from geological data and published plate models. The quality of the grid is subject to variations depending on data coverage. The crustal age coloration was then applied to relief images derived from NGDC topographic data. Light gray areas are sediment-covered continental shelf materials; the darker gray color indicates land. Age-color overlay image by R. Dietmar Mueller, University of Sydney; combined age-relief images by Peter W. Sloss, NOAA-NESDIS-NGDC.

# Age of the Ocean Floor

World Data Center-A for Marine Geology and Geophysics Report MGG-12 (1996)  
Published by the National Geophysical Data Center

U.S. Department of Commerce

*Mickey Kantor, Secretary*

National Oceanic and Atmospheric Administration

*D. James Baker, Undersecretary for Oceans and Atmosphere*

National Environmental Satellite, Data, and Information Service

*Robert S. Winokur, Assistant Administrator for Satellite and Information Services*

National Geophysical Data Center

