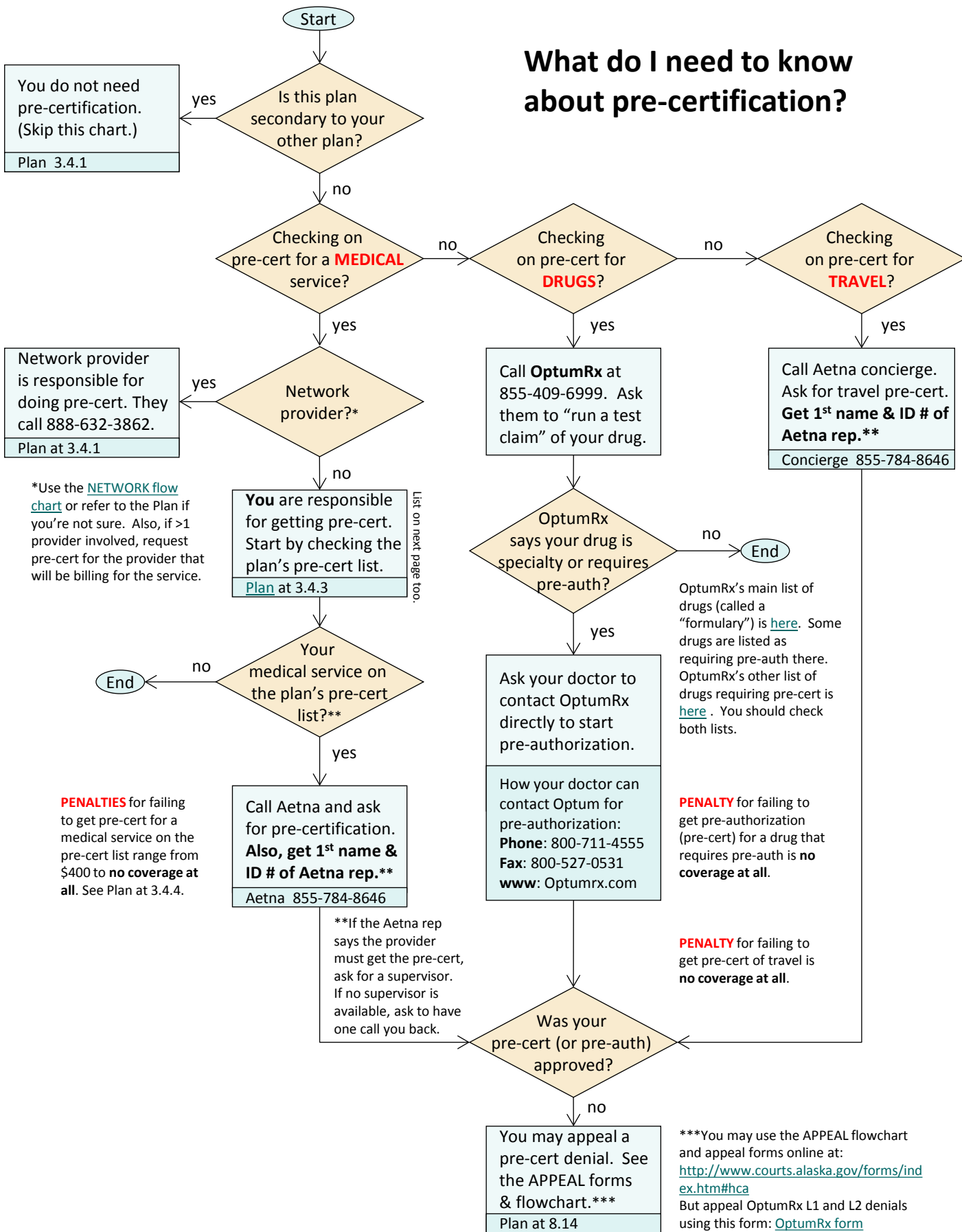


What do I need to know about pre-certification?



PLAN'S PRECERT LIST AS OF JANUARY 2019

HEALTH SERVICES REQUIRING PRECERTIFICATION (SECTION 3.4.3 OF THE PLAN)

(For **PHARMACY** services requiring pre-certification, see the bottom of this page)

1. Stays in a **hospital**
2. Stays in a **skilled nursing facility**
3. Stays in a **rehabilitation facility**
4. Stays in a hospice facility
5. Outpatient hospice care
6. Stays in a residential treatment facility for treatment of mental disorders and substance abuse
7. Partial hospitalization for treatment of mental disorders and substance abuse
8. Home health care
9. Private duty nursing care
10. Transportation (non-emergent) by fixed wing aircraft (plane)
11. Applied behavioral analysis
12. Autologous chondrocyte implantation, Carticel (injection into the knee of cartilage cells grown from tissue cultures)
13. Cochlear implant (surgical implant of a device into the ear to try to improve hearing)
14. Dental implants and oral appliances
15. Dialysis visits
16. Dorsal column (lumbar) neurostimulators: trial or implantation (for relief of severe pain)
17. Electric or motorized wheelchairs and scooters
18. Gastrointestinal tract imaging through capsule endoscopy
19. Hip surgery to repair impingement syndrome
20. Hyperbaric oxygen therapy
21. Lower limb prosthetics
22. Oncotype DX (method for testing for genes that are in cancer cells)
23. Organ transplants
24. Orthognathic surgery procedures, bone grafts, osteotomies and surgical management of the temporomandibular joint (reconstructive surgeries to attempt to correct structural abnormalities of the jaw bones)
25. Osseointegrated implant
26. Osteochondral allograft/knee (grafting of cartilage and bone from a cadaver to the knee joint)
27. Power morcellation with uterine myomectomy, with hysterectomy or for removal of uterine fibroids
28. Proton beam radiotherapy
29. Reconstruction or other procedures that may be considered cosmetic
30. **Surgical spinal procedures**
31. Uvulopalatopharyngoplasty, including laser-assisted procedures (surgery to reconfigure the soft palate to try to help with sleep apnea)
32. Ventricular assist devices
33. **MRI-knee**
34. **MRI-spine**
35. Intensive outpatient programs for treatment of mental disorders and substance abuse, including
 1. Psychological testing
 2. Neuropsychological testing
 3. Outpatient detoxification
 4. Psychiatric home care services
36. **Travel**
37. Use of **out-of-network provider for preventive care services**

2019 PLAN: <http://doa.alaska.gov/drb/pdf/ghlb/akcare/SelectBenefitsEmployeeBooklet-01012019.pdf>

OPTUMRx PRECERT LISTS: See also the OptumRx list of drugs requiring pre-cert. OptumRx's main list of drugs (called a "formulary") is [here](#). Some drugs are listed as requiring pre-auth there. OptumRx's other list of drugs requiring pre-cert is [here](#). You should check both lists.