



## MARPLOT®

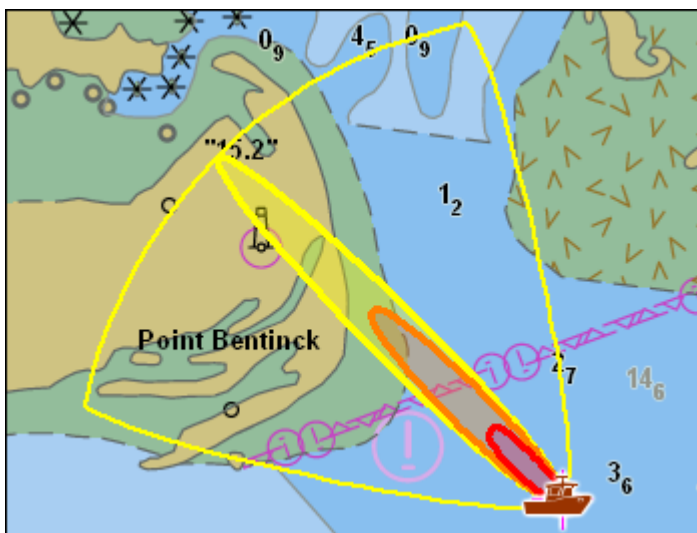
**M**ARPLOT (Mapping Application for Response, Planning, and Local Operational Tasks) is the mapping program for the CAMEO® software suite.

With MARPLOT's easy-to-use GIS interface, you can add your own objects to maps, as well as view and edit data associated with those objects.

MARPLOT is developed jointly by the National Oceanic and Atmospheric Administration (NOAA) and the U.S. Environmental Protection Agency (EPA).

### Key Program Features

- Draw objects on map (or import from other sources).
- Switch quickly between several basemaps or add your own raster maps as background images.
- Get population estimates, elevations, and weather conditions for U.S. locations.
- Import and export data in a variety of formats to exchange information with other mapping programs.
- Add legends, info boxes, and other annotations to the map for screenshots and bookmarks.
- Display ALOHA® threat zones (such as the one shown below) and link map objects to CAMEO Data Manager records.



### Customize the Map: Basemaps, Web Mapping Service (WMS) Layers, and Raster Images

MARPLOT has a variety of different basemaps that you can use as the background image for your map, including both satellite and street view maps with global coverage. The basemaps are provided by online services, so that they are showing the latest information. Additionally, MARPLOT also offers the ability to download basemap tiles for offline use.



A weather radar WMS layer shows a storm near Lake Michigan.

You can customize your map further by adding WMS layers from online providers and raster images (such as aerial photos) that are stored locally on your computer.

### Add Objects and Manage Data

It is simple to draw or import objects in MARPLOT, reposition them on top of the basemap, manage the objects' display settings, and share them with others.

You can add point (symbol) objects using hundreds of symbols that are included in MARPLOT—or you can add your own custom symbols. MARPLOT also has rectangle, circle, polyline, and polygon objects, and you can make special objects (such as buffer zones and grids).

Within MARPLOT, you can view and modify the data associated with those objects, and you can make changes to the data file structure by adding, removing, or reordering fields. You can use the data fields to search for objects in MARPLOT, and choose which data to display in popup boxes when you select objects on the map.

You can also link map objects to the CAMEO Data Manager program to store additional data about the objects (such as chemical inventories and site plans for facilities).



## Annotate the Map

MARPLOT provides several options for adding notes to your map, which can be especially useful when taking screenshots or making a bookmark.

You can make legends, use info boxes (with rich text formatting, hyperlinks, and images) to provide information about the map, make custom labels, and choose the information that appears in an object's popup box when you select it. You can also turn an object popup box into a sticky that stays displayed on the map even when the object is no longer selected.

Additionally, you can use the map extras to add features like a compass or latitude/longitude grid lines to the map.

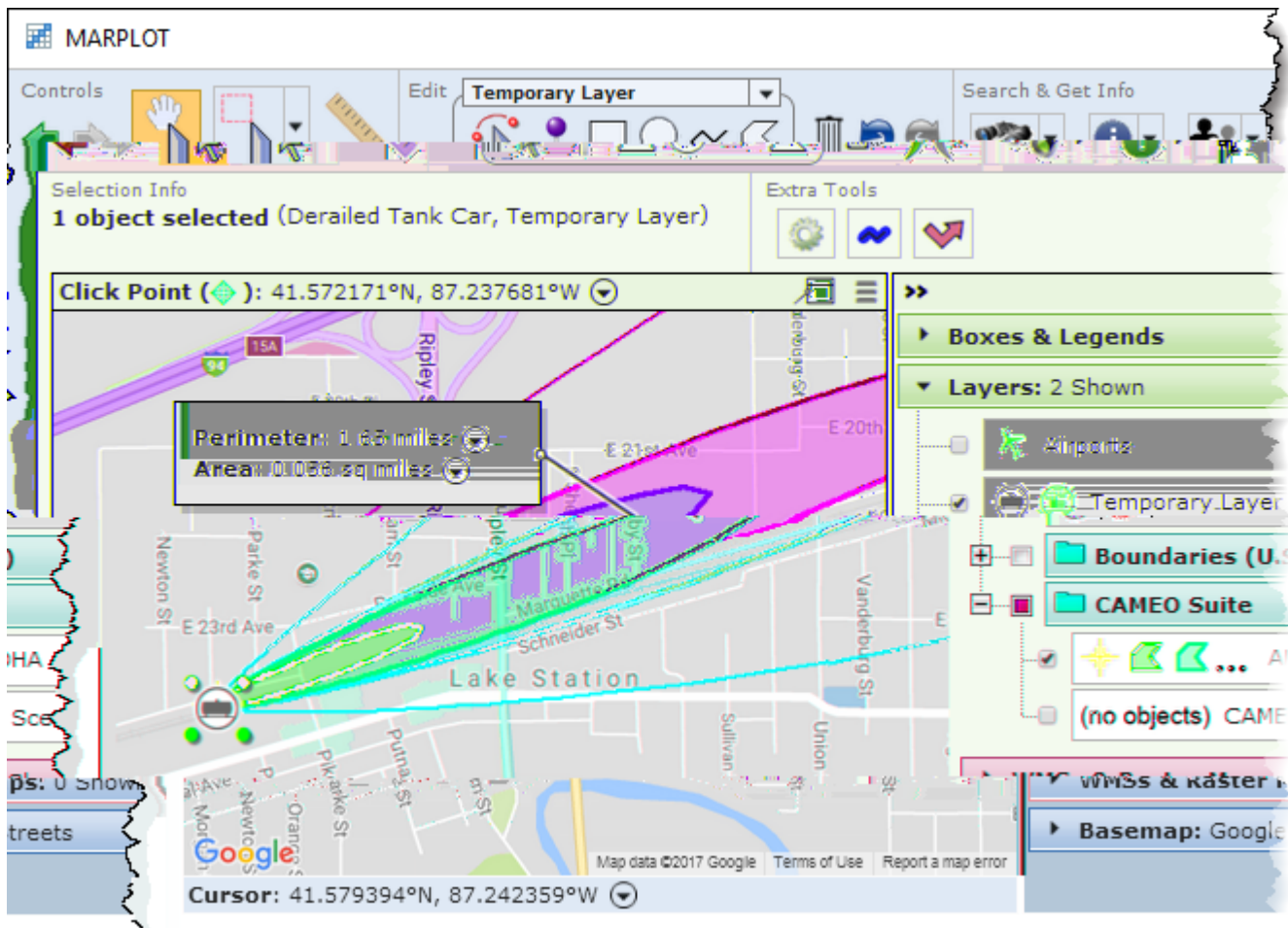
## Getting MARPLOT

To download MARPLOT, go to <https://www.epa.gov/cameo/marplot-software>.

MARPLOT runs on both Windows and Mac computers.

## MARPLOT Contact Information

For additional information:  
<https://response.restoration.noaa.gov/marplot>  
[orr.cameo@noaa.gov](mailto:orr.cameo@noaa.gov)



A derailed tank car location is marked with a symbol object, and an ALOHA threat zone estimate shows where the chemical might travel downwind if the tank ruptures. The toolbar and panel surround the map, giving easy access to tools and menus.

*NOAA's Office of Response & Restoration—Protecting our Coastal Environment*

For further information about NOAA's Office of Response and Restoration,  
please call (301) 713-2989 or visit our website at  
<https://response.restoration.noaa.gov>

