

APPLICATION NOTE



CR6-WiFi Daughter Board OS Update Procedure to Resolve the KRACK Vulnerability

12/17

Table of Contents

PDF viewers: These page numbers refer to the printed version of this document. Use the PDF reader bookmarks tab for links to specific sections.

1. Download Executable and Check Current Operating Systems	1
2. Update to WiFi OS 3.01	3
3. Update to WiFi OS 4.0.....	5

CR6-WiFi Daughter Board OS Update Procedure to Resolve the KRACK Vulnerability

This procedure updates the CR6-WiFi daughter board OS to version 4.0 to resolve the KRACK vulnerability.

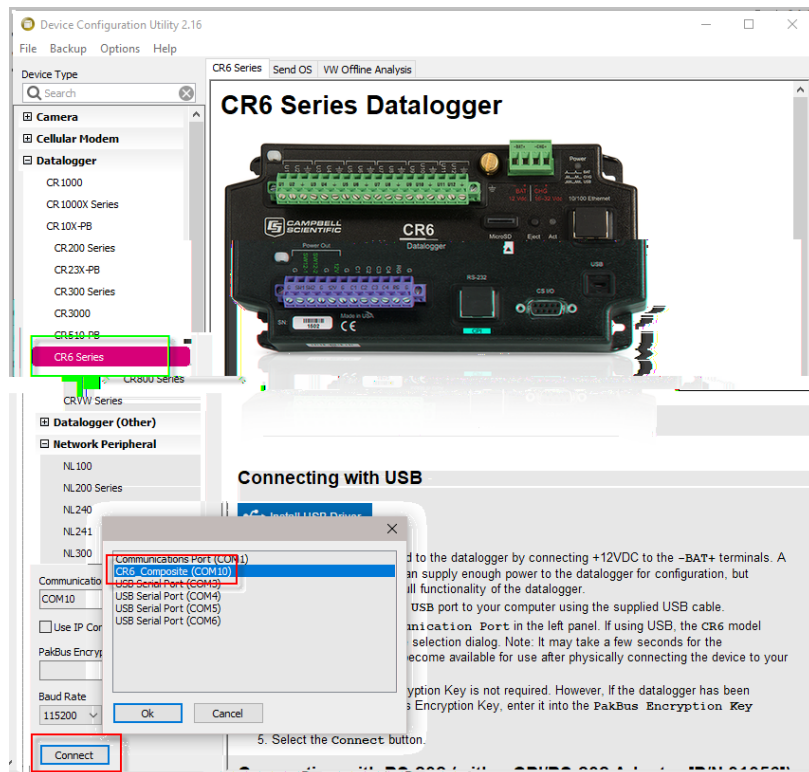
NOTE

If your datalogger is running a WiFi daughter board OS version 3.01 or greater, skip to Section 3 after completing Section 1. Section 1 walks you through the steps to determine what OS version your datalogger has. If your datalogger is running a WiFi daughter board OS version less than 3.01, it must first be updated to version 3.01. Therefore, after completing Section 1, continue to Section 2 and complete the steps to update the OS to version 3.01. Then proceed to Section 3 and update the OS to version 4.00 which resolves the KRACK vulnerability.

1. Download Executable and Check Current Operating Systems

1. Download the executable, `CR6_Wifi_OS_Update_4.0.exe`, from our website at www.campbellsci.com/downloads.
2. Run the executable file.
3. Apply power to the CR6. (A USB connection supplies 5 V power as well as a communication link, which is adequate for setup.)
4. If not using WiFi, connect your communication cable to the CR6.
5. Open *Device Configuration Utility (DevConfig)*.
6. Under **Device Type**, select **CR6 Series**.
7. Select the correct **Communication Port**. (If using WiFi, select the **Use IP Connection** checkbox and browse to or enter the IP address.)

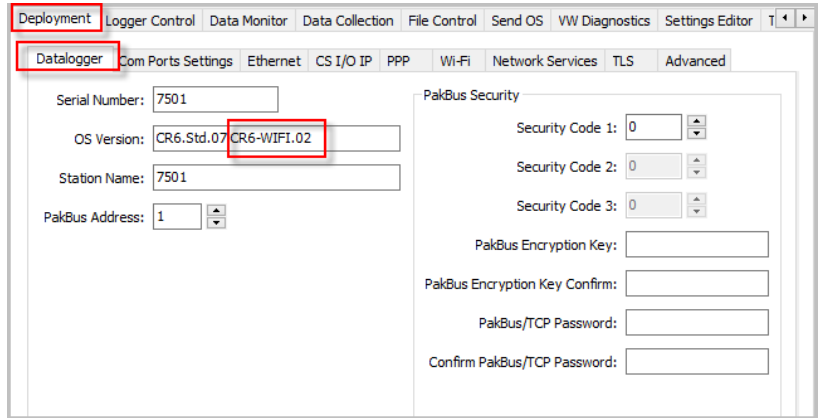
8. Click **Connect**.



9. As a precaution, back up the CR6 datalogger using the wizard accessed from the **Backup | Back Up Datalogger...** command (see www.campbellsci.com/blog/update-datalogger-operating-system).
10. Verify that you are running CR6 version 5 or later operating system. You can see this information in the **Deployment | Datalogger** tab in *DevConfig*. If you are running an earlier operating system, update the operating system (see www.campbellsci.com/blog/update-datalogger-operating-system).



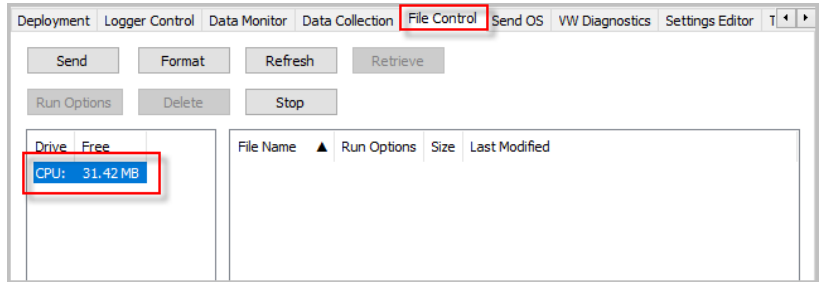
11. Check to see what version of the WiFi daughter board operating system your datalogger is running. As in the previous step, you can see this information in the **Deployment | Datalogger** tab in *DevConfig*. The **OS Version** field shows the datalogger operating system version and WiFi daughter board operating system version (in red below) currently loaded into the datalogger.



12. If your datalogger is already running WiFi daughter board OS 3.01 or greater, skip to Section 3, *Update to WiFi OS 4.0 (p. 5)*.

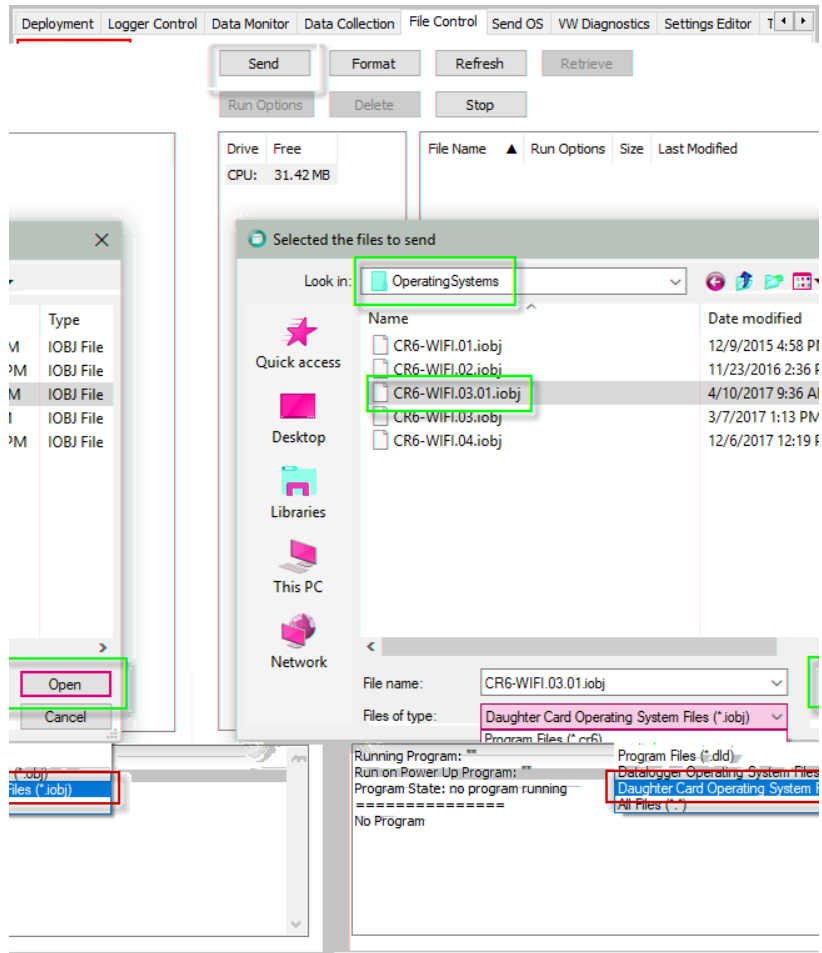
2. Update to WiFi OS 3.01

1. Click the *DevConfig* **File Control** tab.
2. Click the **CPU:** drive.

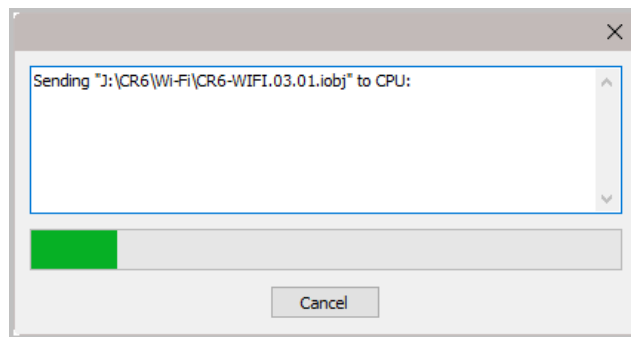


3. Click **Send**.
4. The **Select the files to send** dialog will appear. Navigate to the `C:\Campbellsci\Lib\OperatingSystems` directory.
5. Set the **Files of type:** drop down list to **Daughter Card Operating System Files (*.iobj)**.
6. Select `CR6_WIFI.03.01.iobj` from the file list.

7. Click **Open**.

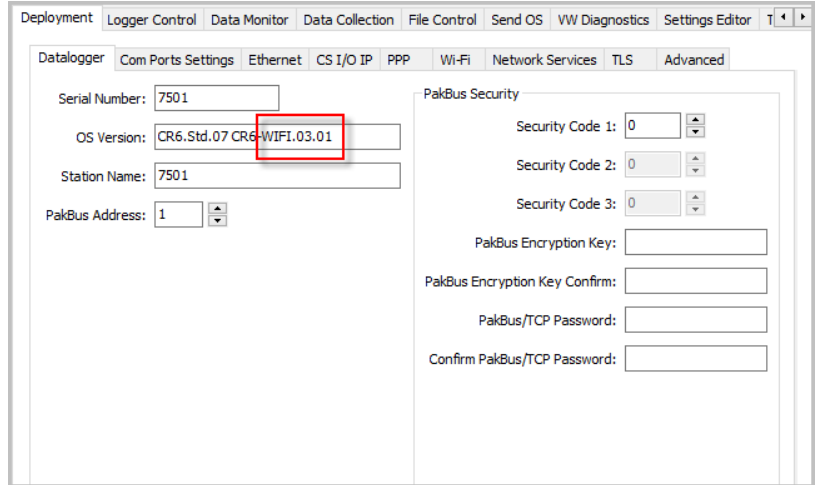


8. The new daughter board operating system is sent to the datalogger.



9. Once the progress bar reaches 100%, click **OK**.

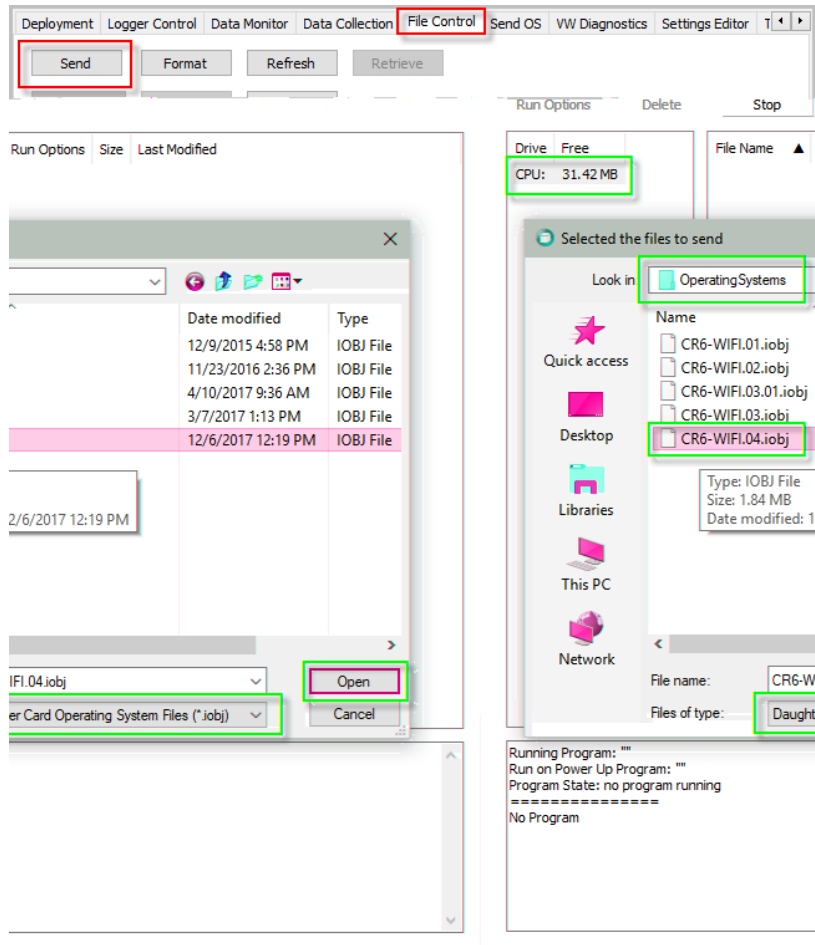
- The **WiFi** LED on the CR6-WiFi will flash green and red as the daughter board is being updated; the update generally takes two or three minutes to complete. After the flashing stops, return to the **Deployment | Datalogger** tab and check that the WiFi daughter board operating system shows version 03.01. You may have to press the **F5** key to refresh the displayed information.



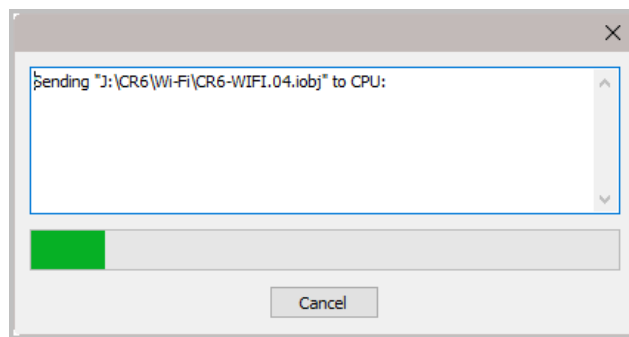
3. Update to WiFi OS 4.0

- Click the *DevConfig* **File Control** tab.
- Click the **CPU:** drive.
- Click **Send**.
- The **Select the files to send** dialog will appear. Navigate to the C:\Campbellsci\Lib\OperatingSystems directory.
- Set the **Files of type:** drop down list to **Daughter Card Operating System Files (*.iobj)**.
- Select **CR6_WIFI.04.iobj** from the file list.

7. Click **Open**.

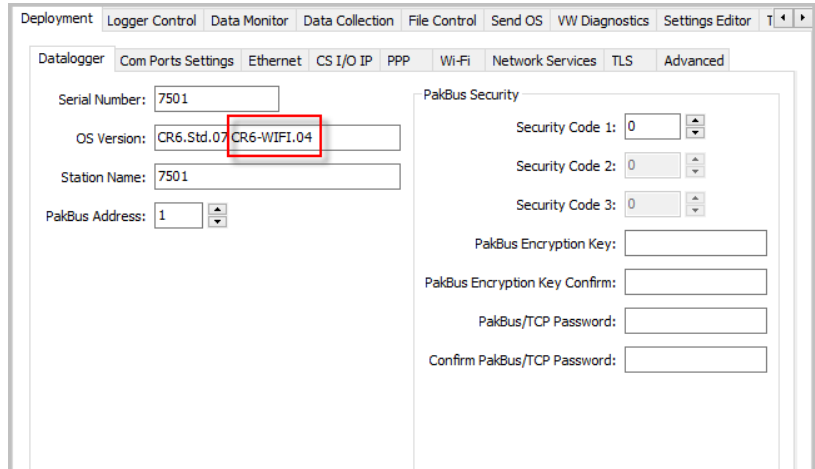


8. The new daughter board operating system is sent to the datalogger.



9. Once the progress bar reaches 100%, click **OK**.

10. The WiFi LED on the CR6-WiFi will flash green and red (and at times, just red) as the daughter board is being updated; the update generally takes two or three minutes to complete. After the flashing stops, return to the **Deployment | Datalogger** tab and check that the WiFi daughter board operating system shows version 04.00. You may have to press the **F5** key to refresh the displayed information.



Your datalogger is now updated and running the latest WiFi daughter board operating system.

Campbell Scientific Companies

Campbell Scientific, Inc.

815 West 1800 North
Logan, Utah 84321
UNITED STATES

www.campbellsci.com • info@campbellsci.com

Campbell Scientific Canada Corp.

14532 – 131 Avenue NW
Edmonton AB T5L 4X4
CANADA

www.campbellsci.ca • dataloggers@campbellsci.ca

Campbell Scientific Africa Pty. Ltd.

PO Box 2450
Somerset West 7129
SOUTH AFRICA

www.campbellsci.co.za • cleroux@csafrica.co.za

Campbell Scientific Centro Caribe S.A.

300 N Cementerio, Edificio Breller
Santo Domingo, Heredia 40305
COSTA RICA

www.campbellsci.cc • info@campbellsci.cc

Campbell Scientific Southeast Asia Co., Ltd.

877/22 Nirvana@Work, Rama 9 Road
Suan Luang Subdistrict, Suan Luang District
Bangkok 10250
THAILAND

www.campbellsci.asia • info@campbellsci.asia

Campbell Scientific Ltd.

Campbell Park
80 Hathern Road
Shepshed, Loughborough LE12 9GX
UNITED KINGDOM

www.campbellsci.co.uk • sales@campbellsci.co.uk

Campbell Scientific Australia Pty. Ltd.

PO Box 8108
Garbutt Post Shop QLD 4814
AUSTRALIA

www.campbellsci.com.au • info@campbellsci.com.au

Campbell Scientific Ltd.

3 Avenue de la Division Leclerc
92160 ANTONY
FRANCE

www.campbellsci.fr • info@campbellsci.fr

Campbell Scientific (Beijing) Co., Ltd.

8B16, Floor 8 Tower B, Hanwei Plaza
7 Guanghua Road
Chaoyang, Beijing 100004
P.R. CHINA

www.campbellsci.com • info@campbellsci.com.cn

Campbell Scientific Ltd.

Fahrenheitstraße 13
28359 Bremen
GERMANY

www.campbellsci.de • info@campbellsci.de

Campbell Scientific do Brasil Ltda.

Rua Apinagés, nbr. 2018 – Perdizes
CEP: 01258-00 – São Paulo – SP
BRASIL

www.campbellsci.com.br • vendas@campbellsci.com.br

Campbell Scientific Spain, S. L.

Avda. Pompeu Fabra 7-9, local 1
08024 Barcelona
SPAIN

www.campbellsci.es • info@campbellsci.es

Please visit www.campbellsci.com to obtain contact information for your local US or international representative.