

WFP's Geospatial Innovation for Improved Humanitarian Response

ImpactAI

- 8 Countries
- 12 Disasters
- 50 WFP beneficiaries
- 45,000 buildings annotated



ImpactAI

AI-based building damage (impact) classification caused by disaster or conflict

No damage	Major damage
Minor damage	Destroyed



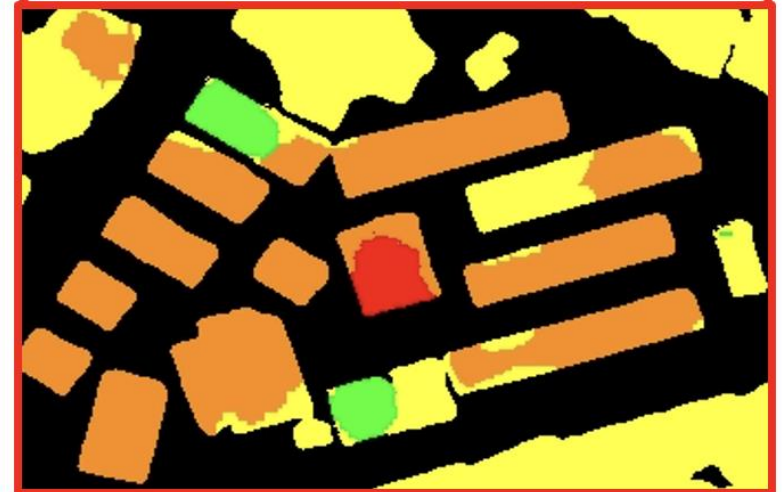
Pre-disaster image



Post-disaster image

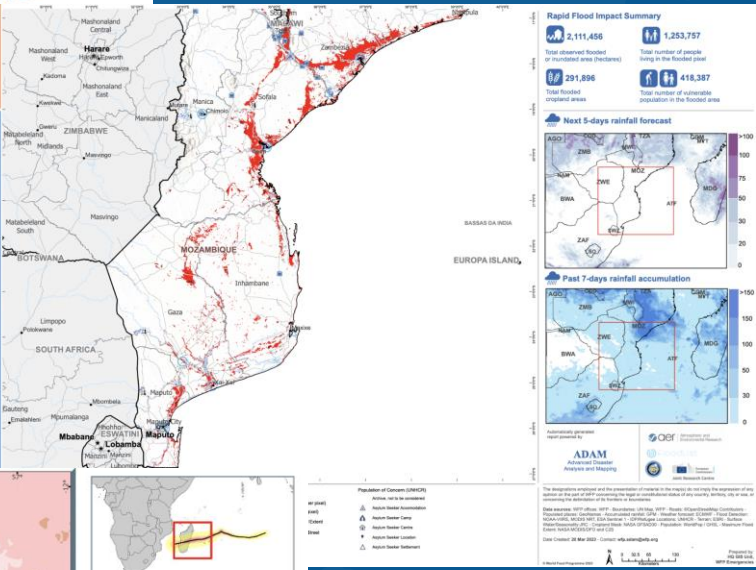
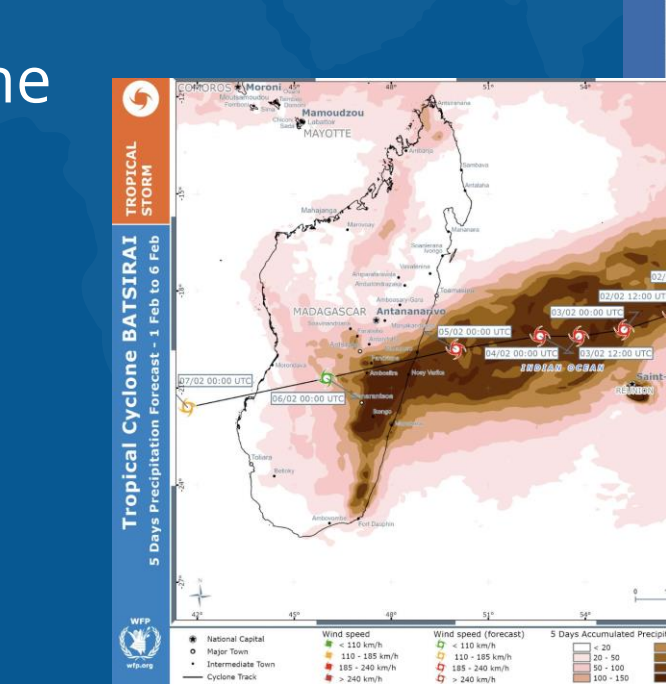
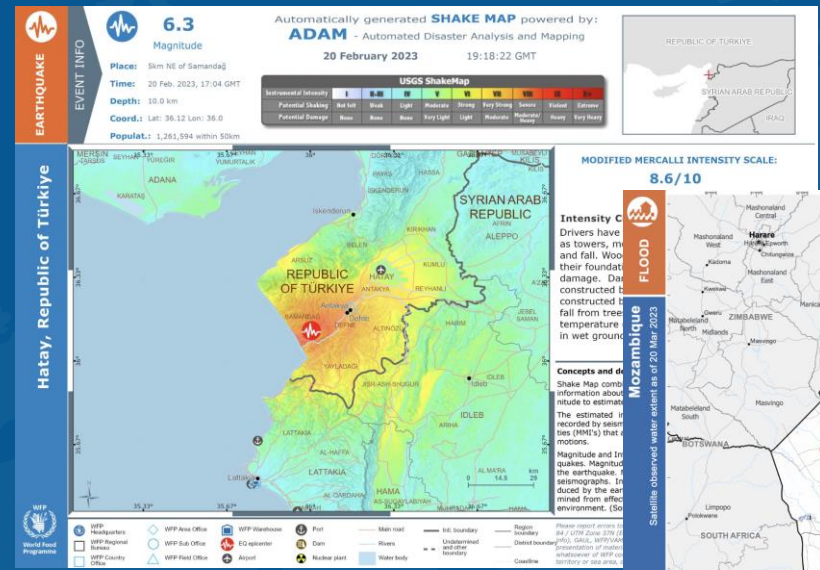


Predictions



Advanced Disaster Analysis and Mapping

- Open access (gis.wfp.org/adam)
- Open data
- 250+ disaster reports
- Floods, Earthquake, Tropical Cyclone
- Near Real-time
- Global Coverage (WFP)



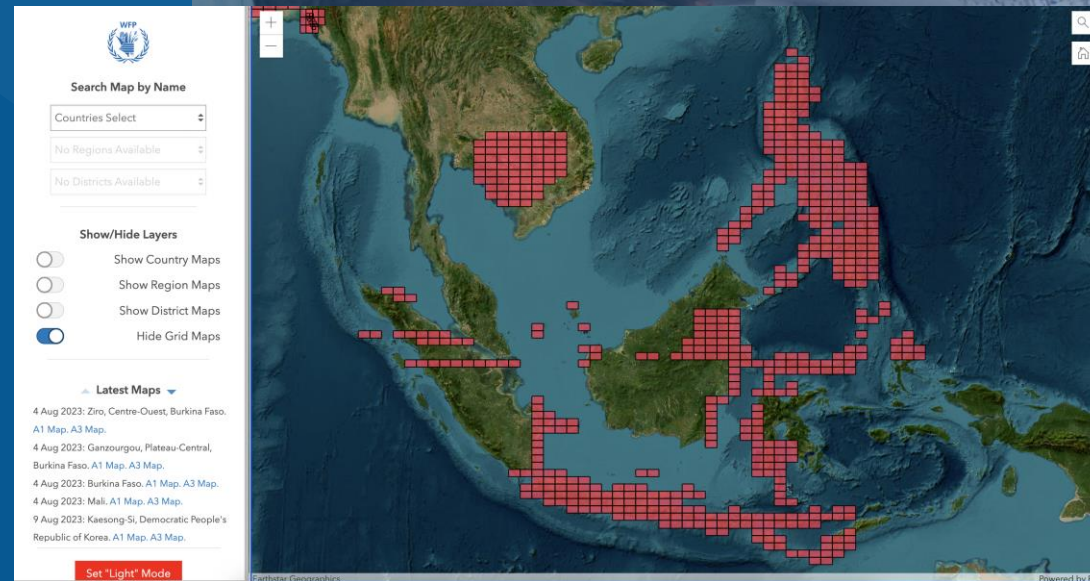
The screenshot displays the ADAM Live Map interface. At the top left is the WFP logo and the title "ADAM Live Map by WFP HQ GIS". A search bar with the placeholder "Find address or place" and a search icon is located at the top center. On the left side, there is a vertical toolbar with icons for zooming in (+), zooming out (-), home, and location. A legend panel is open, showing the following categories and symbols:

- EQ Events**
 - Magnitude
 - Red (> 6.5 - 10)
 - Orange (> 5.5 - 6.5)
 - Green (< 5.5)
- TS Events**
 - Green
 - Orange
 - Red
- FL Events**
 - Blue globe icon
- FL Alerts**
 - Blue globe icon

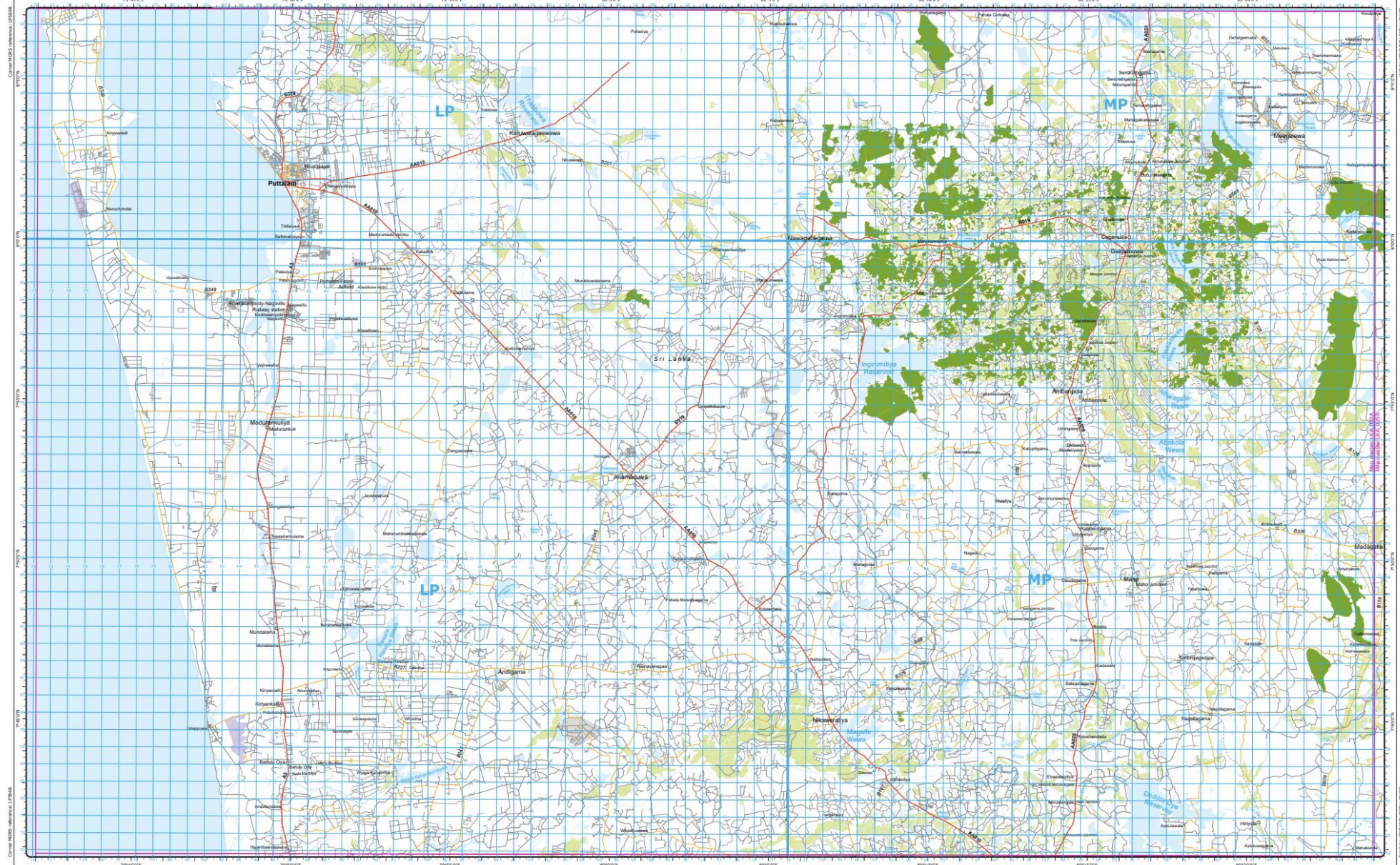
The map shows various event markers across the globe. A red earthquake marker is visible in the Atlantic Ocean. Orange earthquake markers are scattered in the Pacific and Indian Oceans. Green earthquake markers are located in the Mediterranean, East Africa, and Southeast Asia. A blue globe icon is located in West Africa. A tsunami marker (green swirl) is visible in the Pacific Ocean near Japan. The map also shows country names and major cities. At the bottom left, there is a scale bar for 1000km and a "loading..." indicator. At the bottom center, there is a toolbar with icons for layers, grid, print, and other map functions. At the bottom right, it says "POWERED BY" with a logo.

Humanitarian Topographic Atlas

- Open access (hta.gis.wfp.org)
- 30 Countries
- 2000 High resolution detailed maps
- Easily Accessible
- Real time updates



Goal of HTA is to create high-resolution maps for use with WFP field operations.



Date of production:
27 September 2021

Download this map:
<https://hita.gis.wfp.org>

Access full Atlas:
<https://hita.gis.wfp.org>

WFP World Food Programme

Scale: 1:100,000
0 1 2 3 4 5 10 Km.
0 1 2 3 4 5 Miles

GRID ZONE DESIGNATION:
44P

U.S.G. 100 M SQUARE ZONE IDENTIFICATION:
LP MP

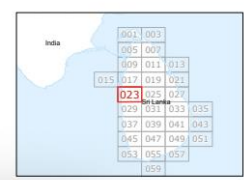
TO GIVE A STANDARD REFERENCE ON THIS SHEET TO NEAREST GRATICULE INTERSECTIONS:

SARVA POINT (UTM COORDINATE)	Populated places
1. East where identifying 100,000 meter square in which the point is	• Peak
2. North where identifying 100,000 meter square in which the point is	• Village, hamlet, locality
3. UTM Zone	• City (>100,000)
4. UTM Easting	• Town (>10,000)
5. UTM Northing	• Village
6. UTM Zone	• Hamlet, locality
7. UTM Easting	• Country
8. UTM Northing	• Province
9. UTM Zone	• District
10. UTM Easting	
11. UTM Northing	
12. UTM Zone	
13. UTM Easting	
14. UTM Northing	
15. UTM Zone	
16. UTM Easting	
17. UTM Northing	
18. UTM Zone	
19. UTM Easting	
20. UTM Northing	
21. UTM Zone	
22. UTM Easting	
23. UTM Northing	
24. UTM Zone	
25. UTM Easting	
26. UTM Northing	
27. UTM Zone	
28. UTM Easting	
29. UTM Northing	
30. UTM Zone	
31. UTM Easting	
32. UTM Northing	
33. UTM Zone	
34. UTM Easting	
35. UTM Northing	
36. UTM Zone	
37. UTM Easting	
38. UTM Northing	
39. UTM Zone	
40. UTM Easting	
41. UTM Northing	
42. UTM Zone	
43. UTM Easting	
44. UTM Northing	
45. UTM Zone	
46. UTM Easting	
47. UTM Northing	
48. UTM Zone	
49. UTM Easting	
50. UTM Northing	

HUMANITARIAN TOPOGRAPHIC ATLAS

Refer to this map as Sri Lanka 023A

- WFP regional office
- WFP country office
- WFP area office
- WFP sub office
- WFP field office
- IDP camp
- IDP center
- Refugee camp
- Refugee center
- Refugee location
- Other historical population location
- Railway
- Highway
- Primary road
- Secondary road
- Tertiary road
- Track/road
- Residential
- Publicway
- International boundary
- Undetermined boundary
- Province
- District
- Water body
- River
- Contour lines (100m interval)
- Transportation
- Aerodrome
- Commercial/ public place
- Agriculture land
- Residential
- Green area
- Industrial
- Forest
- Island
- Wetland



Humanitarian Topographic Atlas (HTA) is a collection of topographic maps primarily based on open data, created by WFP for supporting disaster response during humanitarian crises. The primary goal of HTA is to create a high-quality, highly readable and aesthetically pleasing topographic map covering the areas with WFP field operations.

The map features both contour lines and relief shading derived from SRTM data. Topographic features, roads, place names and all other map features are from the OpenStreetMap project. HTA maps are updated automatically on a regular basis. Therefore, the map may contain the data from the OpenStreetMap database at date and time when the map was last updated. If you notice any change in OpenStreetMap, it will appear also on HTA maps after the next update. The date of the next planned update for this map is the 27/10/2021.

The information layer is color-coded with a typical white/grey gradient to show a shaded relief. Contour lines are available with 100 m intervals. Maps with subdivisions intervals up to 20m, can be requested. Contour lines are marked with elevation labels, in meters.

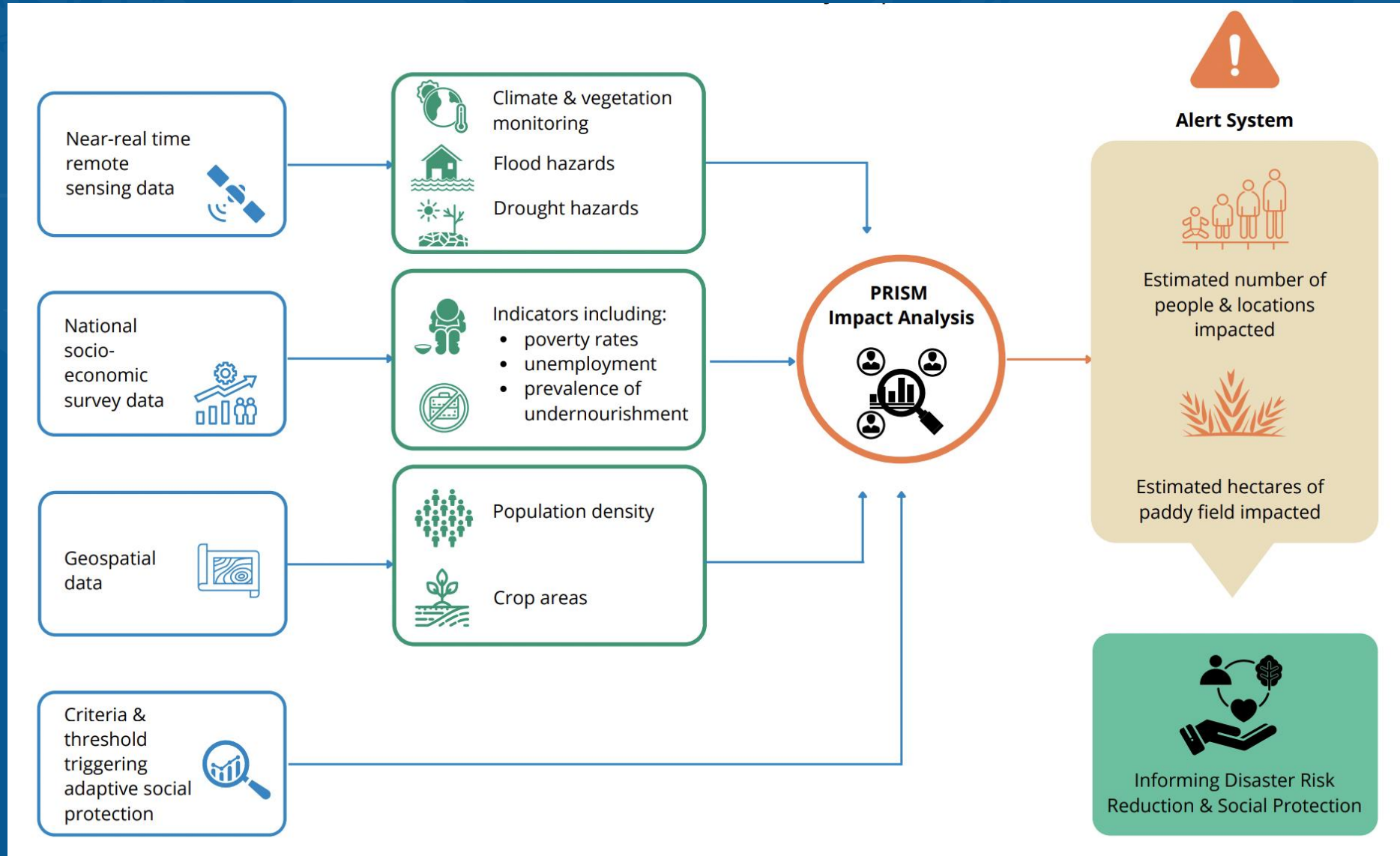
Most features on the map, such as cities, roads, land usage and services come from the OpenStreetMap project. HTA maps will be improved and updated.

HTA maps will be available under the Open Data Commons Attribution (ODC-BY) license (<https://www.opendatacommons.org/licenses/by/>). Therefore, HTA maps are available under the CC-BY-SA license as well. IDP and Refugee locations are provided by UNHCR. If you need more frequent updates or need other areas that are not already inside the HTA project, please write to hita@wfp.org.

The designations employed and the presentation of material in this map do not imply the expression of any opinion whatsoever of WFP concerning the legal or constitutional status of any country, territory or sea area, or concerning the delimitation of frontiers.

PRISM

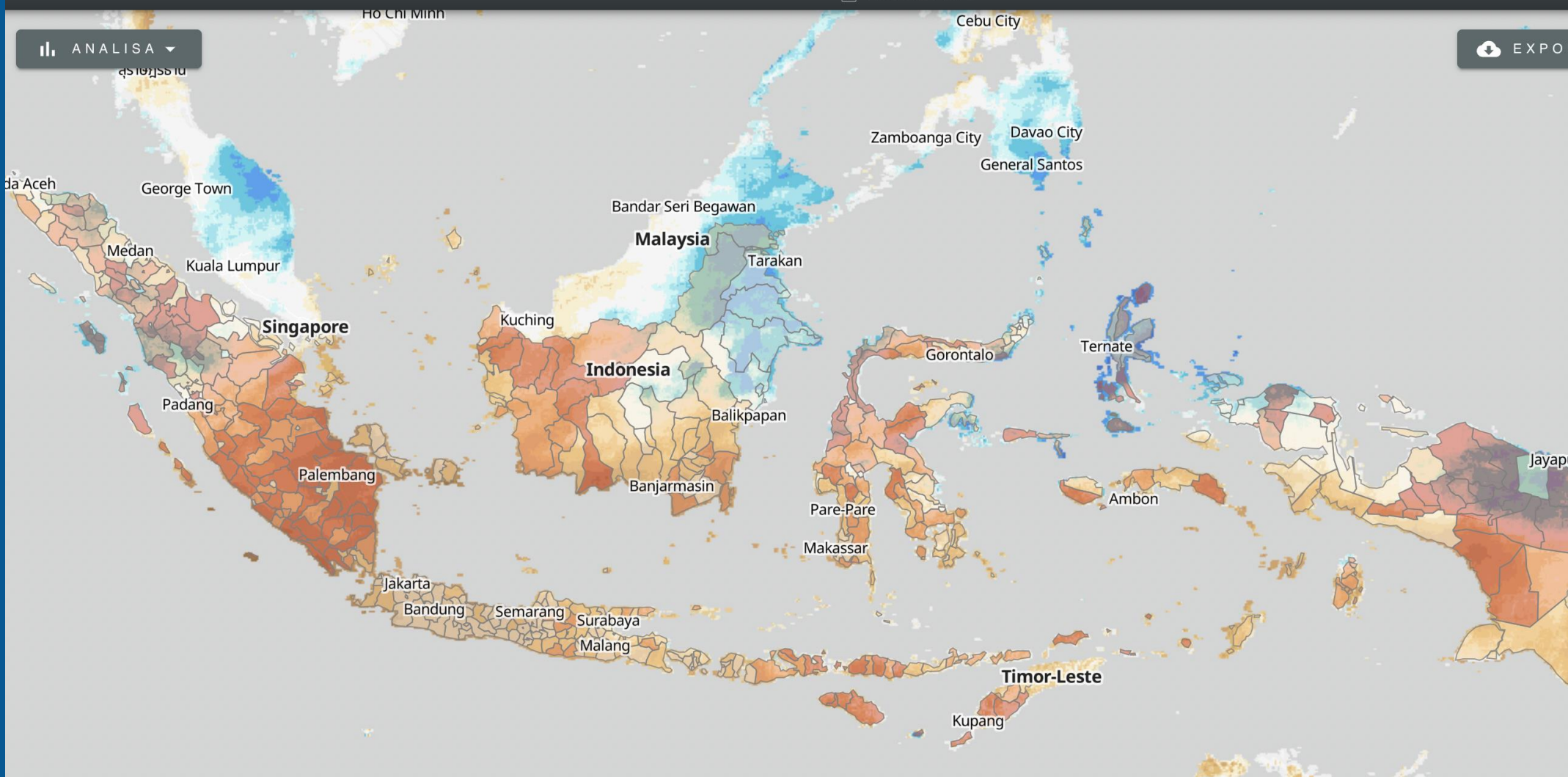
Platform for Realtime Impact and Situation Monitoring



ANALISA

EXPORT

LEGENDA



Monthly rainfall anomaly

110-120%
120-130%
130-150%
150-200%
200-300%
300-400%
> 400%

Monthly precipitation anomaly compared to the long term average. Derived from CHIRPS (UCSB Climate Hazards Group). <https://www.chc.ucsb.edu/data/chirps>

DOWNLOAD

Mount Hagen

Masyarakat Hidup Dari Sektor Agrikultur

≤ 14.91
14.92 - 33.98
33.99 - 44.71
44.72 - 54.87
> 54.87

SEP 11, 2023

SEPTEMBER 2023

OCTOBER 2023

NOVEMBER 2023

DECEMBER 2023

HungerMapLIVE



HungerMap ^{LIVE}

SUBSCRIBE

Navigate

Select a country | v

Access PDF reports ⓘ

Download an analysis | v

Conflict Alerts ^

- Countries with ≥ 1 fatality /200,000 in the last 30 days.

Climate Alerts

- % of people living in areas with significant rainfall or vegetation deficit > 15%
- % of people living in areas with significant excess rainfall > 15%

0.71B
Total number of people with insufficient food consumption

17
Number of countries with very high levels of hunger



- Hazards
- Conflict
- Current Food Consumption
- Vegetation
- Rainfall
- IPC/CH



SUBSCRIBE

Food Security

Population
53.7M

People with insufficient food consumption
11.3M

↑ 0.02 M
increase from 3 months ago
↓ 0.02 M
decrease from 1 month ago

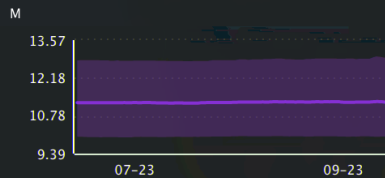
Nutrition

Acute malnutrition
6.6% of children (under 5)

Chronic malnutrition
29.4% of children (under 5)

Food Security Trends

Trend of the number of people with insufficient food consumption



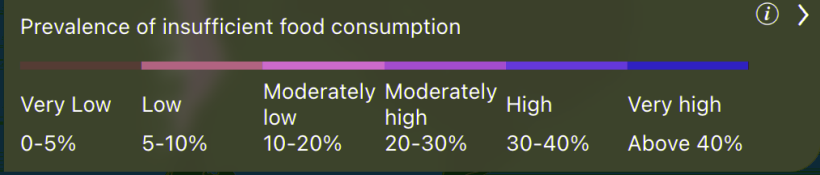
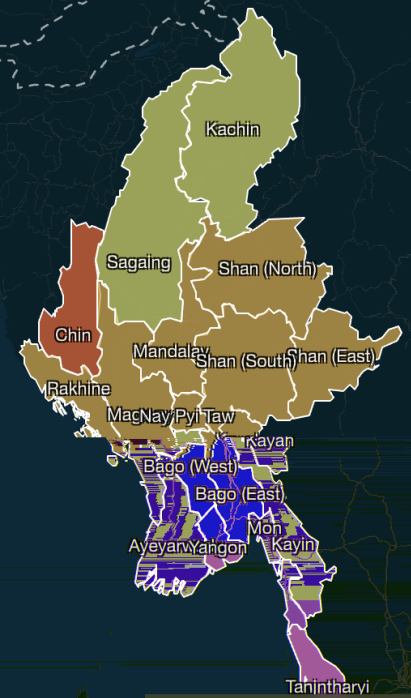
Trend of the number of people using crisis or above crisis food-based coping

No Data

Back to Global

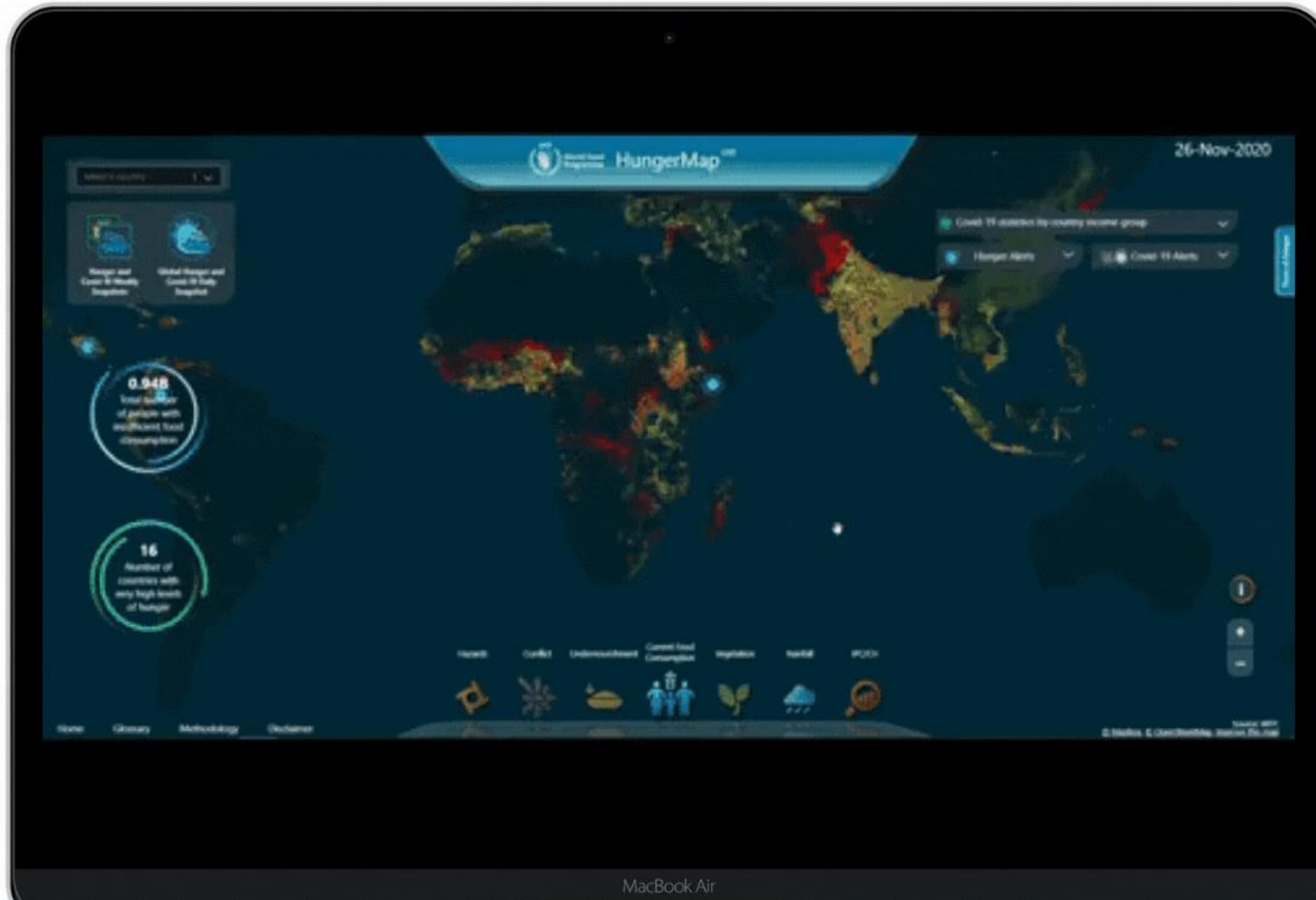


- Macro-economic
- Currency exchange
- Balance of trade
- Headline and food inflation



Hazards Conflict Current Food Consumption Vegetation Rainfall IPC/CH







Thank you!