



# Promoting Anticipatory Action for Disaster Mitigation Response Through an Innovative CGIAR AWARE Platform (Early Warning to Action and Finance)

International Water Management Institute (IWMI)

18<sup>th</sup> September 2023

Niranga Alahacoon

Innovative water solutions for sustainable development

Food · Climate · Growth

# International Water Management Institute (IWMI)



# Enabling Responsiveness: AWARE Platform

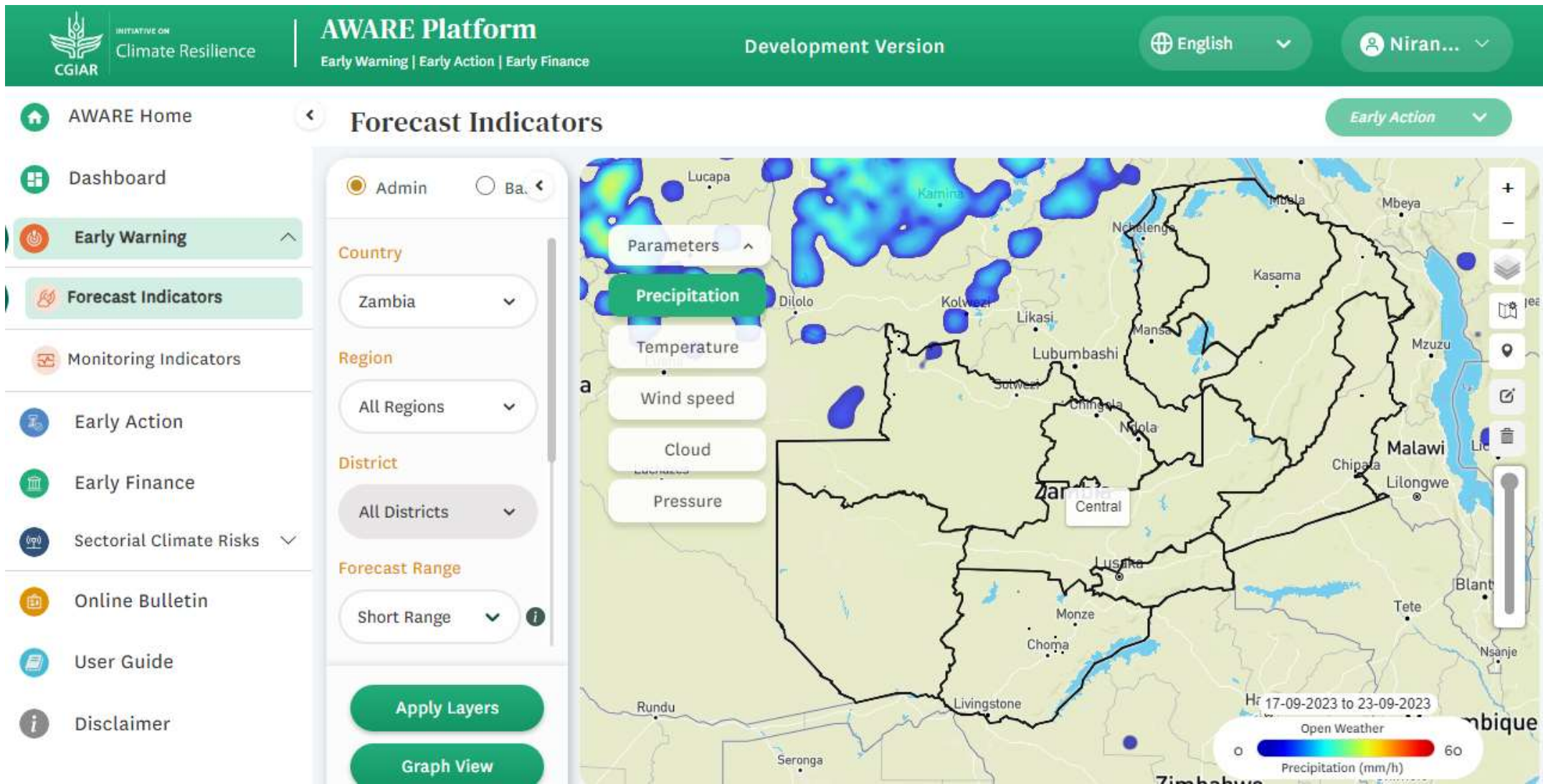
The AWARE platform supports a broad range of key early-warning indicators to set out the roles and responsibilities of key stakeholders to ensure the mechanism tightens the links between early warning, early action and early finance.

The screenshot displays the AWARE Platform website interface. The header is green and contains the CGIAR logo, the text 'INITIATIVE ON Climate Resilience', the 'AWARE Platform' title with sub-headers 'Early Warning | Early Action | Early Finance', 'Development Version', 'Sign in', a 'Register Now' button, and a language selector set to 'English'.

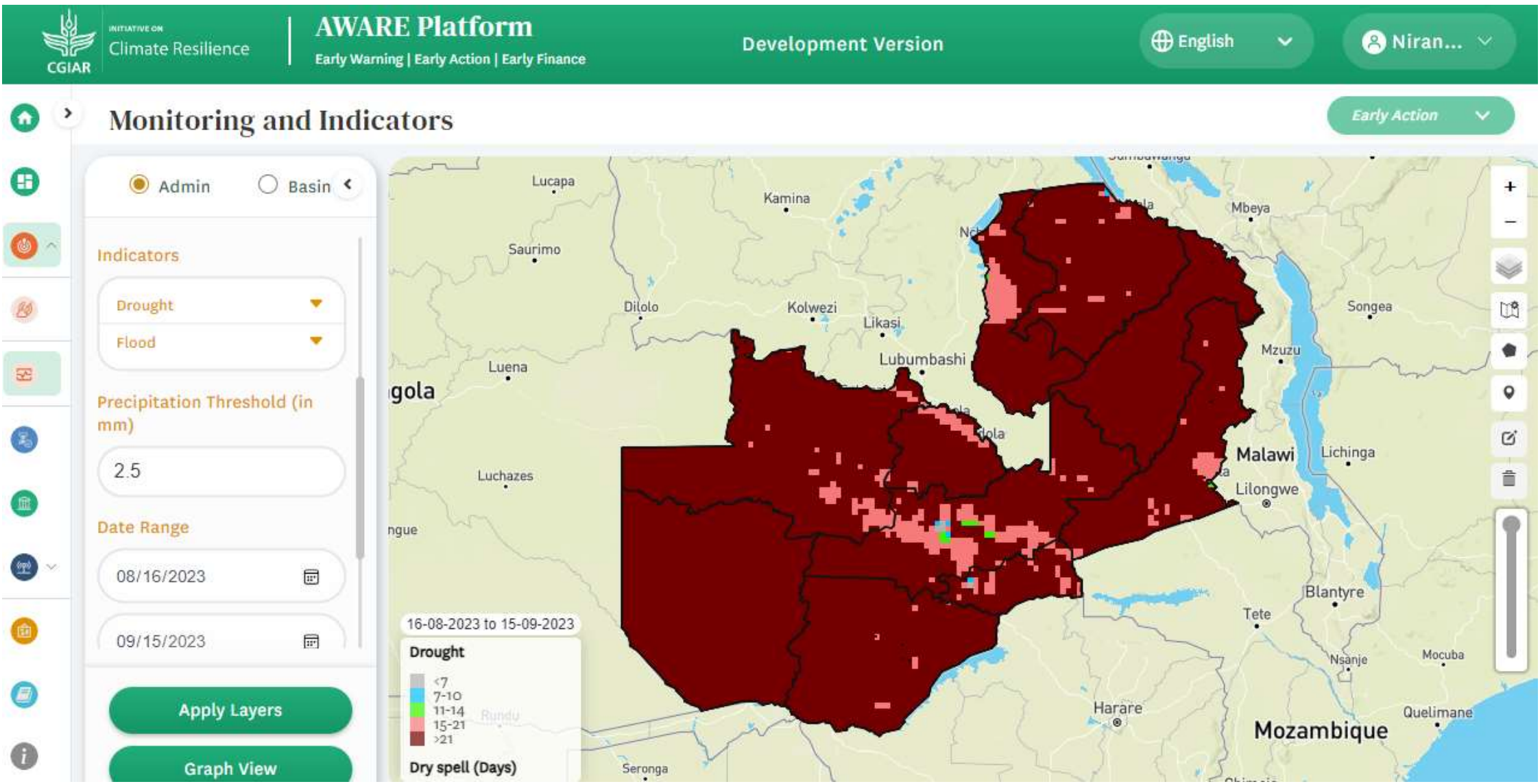
The main content area features six white cards with rounded corners, each representing a platform function:

- Early Warning:** Represented by an orange circular icon with a power symbol. The text states: "The tool allows the users to monitor past and current climate and vegetation conditions, floods and drought severity, health related issues and price fluctuation of major crops to anticipate the future condition and early actions."
- Early Action:** Represented by a blue circular icon with an hourglass. The text states: "This tool summarizes the actions to be measured for different stages of disasters using the Ealy Warning module to mitigate climate through proactive drought management measures."
- Early Finance:** Represented by a green circular icon with a classical building. The text states: "Provides overview and reporting of early finance opportunities based on the actions taken by institutes."
- Sectorial Climate Risks:** Represented by a blue circular icon with a signal tower. The text states: "Provides overview and reporting of climate risk indicators health related issues and price fluctuation of major crops to anticipate the future condition based on the data collected."
- Online Bulletin:** Represented by an orange circular icon with a document and a building. The text states: "This tool helps to disseminate drought related information to guide various users for timely early action and decision-making process."
- User Guide:** Represented by a blue circular icon with a document. The text states: "User guide provide opportunity for users step wise procedure on the various knowledge products of AWARE for quick access and information sharing."

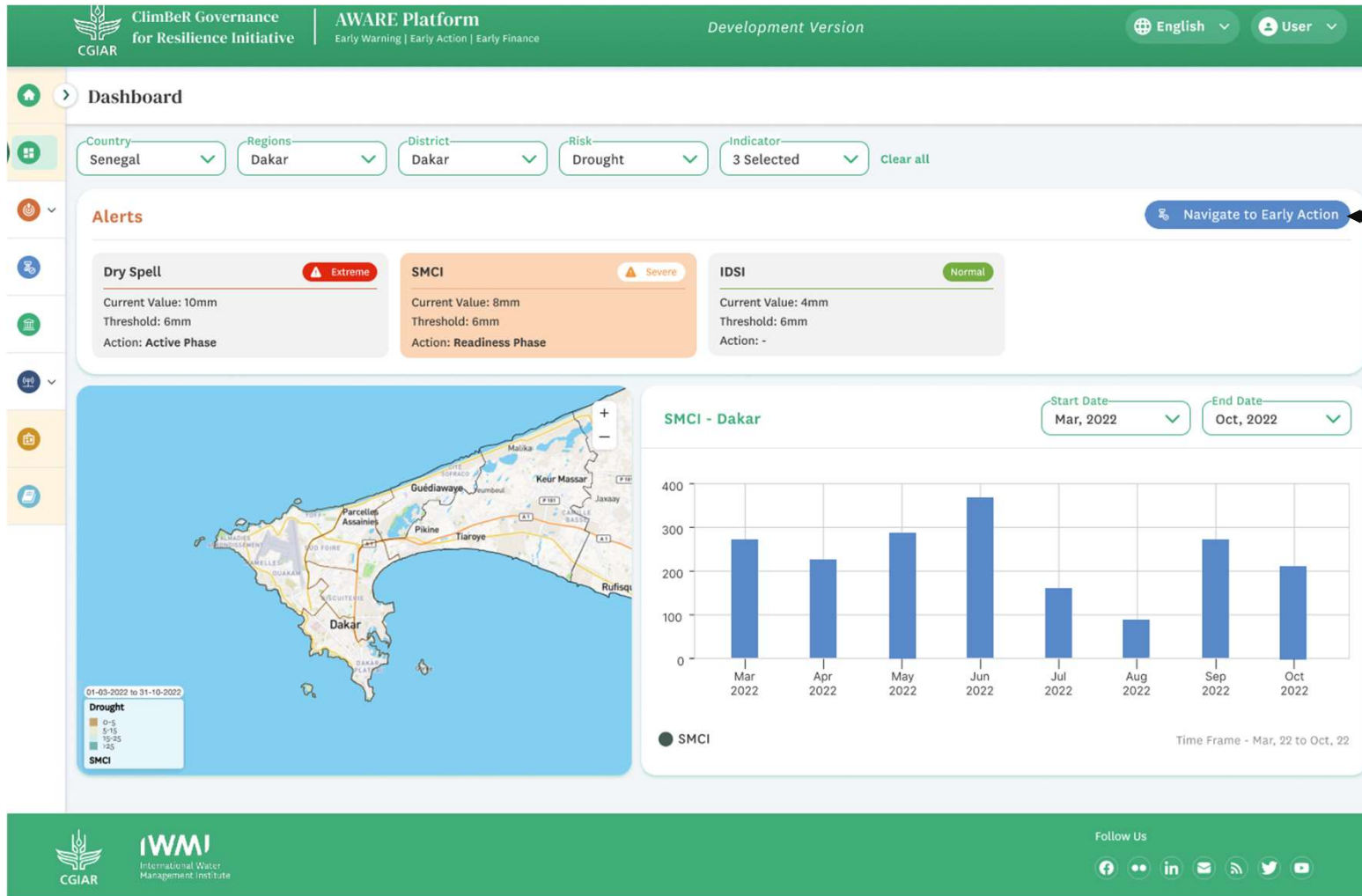
# Early Warning – Forecasting Indicators



# Early Warning –Monitoring Indicators



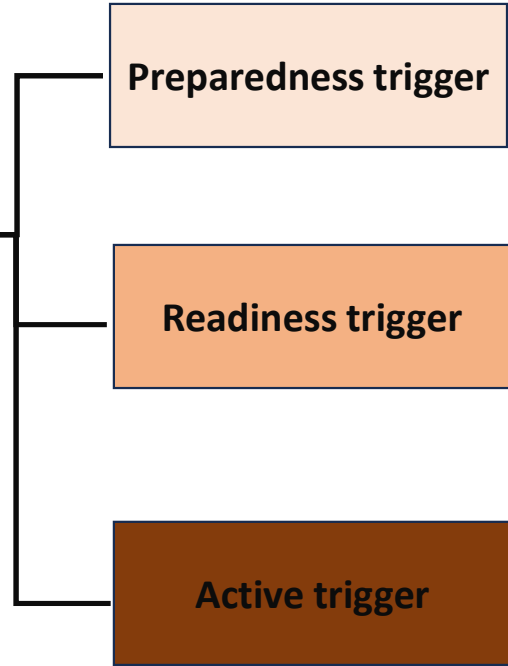
# Early Warning – Trigger



Preparedness trigger

Readiness trigger

Active trigger



# Anticipatory Action



Preparedness Phase ⓘ



Readiness Phase ⓘ



Active Phase ⓘ

## Community Risk Assessment

The Community Risk Assessment (CRA) framework is a potent toolkit for recognizing and prioritizing risks, guiding assessments, and fostering participatory disaster planning. Through techniques like transect walks, risk mapping, and focus group talks, it enables robust data collection, hazard mapping, and vulnerability analysis. Involving community, experts, and stakeholders, the CRA framework unveils insights into hazards, vulnerabilities, and capacities, forming a basis for location-tailored Anticipatory Action Plans (AAPs) that underpin effective disaster management and swift financial mobilization.

## Focus Group Discussion

The "Focus Group Discussion (FGD)" is a structured method to engage communities in assessing drought impacts and promoting proactive measures. It seeks to understand natural disaster effects, including water access, livelihood hurdles, and food security. Participants contribute insights for solutions, forming a comprehensive Anticipatory Action Plan (AAP). Through guided group discussions with a moderator, note-taker, and observer, this process generates actionable strategies. It enhances disaster preparedness, fosters resilience, and addresses adverse natural disaster effects.

## Key Informant Interviews

The "Key Informant Interview (KII)" employs a semi-structured questionnaire to extract vital insights from knowledgeable insiders in organizations regarding their roles in managing drought emergencies. It explores their involvement, decision-making, and roles in prevention, response, and anticipating disaster impacts. Furthermore, it assesses familiarity with and usefulness of Anticipatory Action (AA), gauges the organization's capacity for AA, and addresses disparities and government mitigation efforts. This method seeks informed opinions, enhancing disaster management strategies through valuable recommendations.

# Anticipatory Action



Preparedness Phase ⓘ



Readiness Phase ⓘ



Active Phase ⓘ

## Planned Intervention



Education



Water, Sanitation & HealthCare  
(WASH)



Restoring Livelihoods and  
households' income source



# Early Finance



INITIATIVE ON  
Climate Resilience

## AWARE Platform

Early Warning | Early Action | Early Finance

Development Version

English

Niran...



## Early Finance

Generate Report



Education

Total Budget : \$ 5850020



Water, Sanitation & HealthCare  
(WASH)

Total Budget : \$ 12200000.09



Restoring Livelihoods and  
households' income source

Total Budget : \$ 4740000



Shelter, Housing and Settlements

Total Budget : \$ 15590000



Risk Forecasting, Preparedness and  
Preventive measures.

Total Budget : \$ 43530000

# Thank you

[n.alahacoon@cgiar.org](mailto:n.alahacoon@cgiar.org)