



Duke at Kentucky

11/12/24 State Farm Arena, Atlanta
2024-25 Men's Basketball

Game Time: 9:00 PM
Game Duration: 2:20
Attendance: 16,107

Officials: Joe Lindsay, Ron Groover, Courtney Green

Duke - 72

Record: 2-1

| NO. | Name | F/C | Min | FG | | | 3P | | | FT | | | Rebounds | | | Fouls | | TP | AS | TO | ST | Blocks | | +/- |
|---------------|----------------|-----|-------|-------|------|-------|----|----|-----|----|----|----|----------|-----|----|-------|---|----|----|----|----|--------|--|-----|
| | | | | M-A | M-A | M-A | OR | DR | TOT | PF | FD | OR | DR | TOT | BS | BA | | | | | | | | |
| 2 | Cooper Flagg | F | 31:56 | 9-19 | 1-5 | 7-9 | 0 | 11 | 11 | 2 | 9 | 26 | 2 | 3 | 0 | 2 | 2 | 3 | 0 | 2 | 2 | -8 | | |
| 9 | Khaman Maluach | C | 22:41 | 5-5 | 0-0 | 0-0 | 3 | 4 | 7 | 3 | 0 | 10 | 0 | 0 | 0 | 3 | 0 | 0 | 0 | 3 | 0 | 4 | | |
| 1 | Caleb Foster | G | 28:34 | 2-10 | 0-5 | 0-1 | 1 | 3 | 4 | 3 | 2 | 4 | 4 | 2 | 2 | 0 | 1 | 2 | 0 | 1 | 2 | | | |
| 5 | Tyrese Proctor | G | 36:04 | 4-9 | 2-5 | 2-3 | 0 | 3 | 3 | 3 | 2 | 12 | 2 | 0 | 1 | 0 | 0 | 1 | 0 | 0 | -9 | | | |
| 7 | Kon Knueppel | G | 36:53 | 5-20 | 1-8 | 3-4 | 1 | 4 | 5 | 3 | 5 | 14 | 3 | 1 | 1 | 0 | 4 | 3 | 1 | 1 | 0 | -5 | | |
| 6 | Maliq Brown | | 16:53 | 0-1 | 0-0 | 0-0 | 4 | 3 | 7 | 3 | 0 | 0 | 0 | 0 | 1 | 2 | 1 | 0 | 1 | 0 | -8 | | | |
| 14 | Sion James | | 13:03 | 2-4 | 0-0 | 0-0 | 0 | 2 | 2 | 1 | 0 | 4 | 1 | 0 | 0 | 0 | 0 | 0 | 0 | 0 | -1 | | | |
| 18 | Mason Gillis | | 13:56 | 1-3 | 0-1 | 0-0 | 1 | 2 | 3 | 1 | 0 | 2 | 0 | 0 | 0 | 0 | 0 | 0 | 0 | 1 | 0 | | | |
| Team | | | | | | | 1 | 1 | 2 | | | 0 | | | 0 | | | | | | | | | |
| Totals | | | | 28-71 | 4-24 | 12-17 | 11 | 33 | 44 | 19 | 18 | 72 | 12 | 7 | 6 | 6 | 8 | 5 | | | | | | |

| Shooting By Period | | |
|--------------------|-------|-------|
| 1st FG% | 18-37 | 48.6% |
| 3PT% | 3-12 | 25.0% |
| FT% | 7-8 | 87.5% |
| 2nd FG% | 10-34 | 29.4% |
| 3PT% | 1-12 | 8.3% |
| FT% | 5-9 | 55.6% |
| GM FG% | 28-71 | 39.4% |
| 3PT% | 4-24 | 16.7% |
| FT% | 12-17 | 70.6% |

Dead Ball Rebounds: 4, 1

Technical Fouls::NONE

Kentucky - 77

Record: 3-0

| NO. | Name | F/C | Min | FG | | | 3P | | | FT | | | Rebounds | | | Fouls | | TP | AS | TO | ST | Blocks | | +/- |
|---------------|------------------|-----|-------|-------|-------|-------|----|----|-----|----|----|----|----------|-----|----|-------|---|----|----|----|----|--------|--|-----|
| | | | | M-A | M-A | M-A | OR | DR | TOT | PF | FD | OR | DR | TOT | BS | BA | | | | | | | | |
| 7 | Andrew Carr | F | 30:09 | 5-8 | 2-3 | 5-6 | 2 | 4 | 6 | 2 | 6 | 17 | 3 | 2 | 0 | 1 | 1 | 9 | | | | | | |
| 22 | Amari Williams | F | 20:16 | 3-12 | 0-0 | 4-5 | 3 | 5 | 8 | 0 | 3 | 10 | 2 | 1 | 0 | 2 | 2 | 10 | | | | | | |
| 00 | Otega Oweh | G | 30:44 | 4-10 | 2-3 | 5-6 | 2 | 4 | 6 | 3 | 4 | 15 | 3 | 3 | 2 | 1 | 1 | 6 | | | | | | |
| 1 | Lamont Butler | G | 24:14 | 3-8 | 1-3 | 2-4 | 0 | 3 | 3 | 3 | 3 | 9 | 4 | 2 | 0 | 0 | 1 | 10 | | | | | | |
| 2 | Jaxson Robinson | G | 26:36 | 0-4 | 0-3 | 1-3 | 0 | 1 | 1 | 1 | 1 | 1 | 0 | 1 | 1 | 2 | 0 | 6 | | | | | | |
| 10 | Brandon Garrison | | 17:36 | 4-5 | 0-0 | 0-0 | 1 | 3 | 4 | 3 | 1 | 8 | 2 | 1 | 1 | 1 | 0 | -7 | | | | | | |
| 4 | Koby Brea | | 21:19 | 3-5 | 2-4 | 0-0 | 0 | 5 | 5 | 3 | 0 | 8 | 2 | 0 | 0 | 1 | 0 | 7 | | | | | | |
| 77 | Kerr Kriisa | | 17:01 | 2-9 | 2-7 | 0-0 | 0 | 2 | 2 | 2 | 1 | 6 | 0 | 0 | 0 | 0 | 1 | -9 | | | | | | |
| 15 | Ansley Almonor | | 09:51 | 1-2 | 1-2 | 0-0 | 0 | 0 | 0 | 1 | 0 | 3 | 1 | 0 | 0 | 0 | 0 | -4 | | | | | | |
| 5 | Collin Chandler | | 02:15 | 0-0 | 0-0 | 0-0 | 0 | 0 | 0 | 0 | 0 | 0 | 0 | 0 | 0 | 0 | 0 | -3 | | | | | | |
| Team | | | | | | | 2 | 6 | 8 | | | 0 | | | 1 | | | | | | | | | |
| Totals | | | | 25-63 | 10-25 | 17-24 | 10 | 33 | 43 | 18 | 19 | 77 | 17 | 11 | 4 | 8 | 6 | 5 | | | | | | |

| Shooting By Period | | |
|--------------------|-------|-------|
| 1st FG% | 11-31 | 35.5% |
| 3PT% | 7-16 | 43.8% |
| FT% | 8-13 | 61.5% |
| 2nd FG% | 14-32 | 43.8% |
| 3PT% | 3-9 | 33.3% |
| FT% | 9-11 | 81.8% |
| GM FG% | 25-63 | 39.7% |
| 3PT% | 10-25 | 40.0% |
| FT% | 17-24 | 70.8% |

Dead Ball Rebounds: 1, 0

Technical Fouls::NONE

| | DUK | KEN |
|------------------|---------------|---------------|
| Biggest lead | 10 (1st 2:40) | 6 (1st 13:51) |
| Best Scoring Run | 9 (1st 7:08) | 7 (1st 13:51) |
| Lead Changes | 9 | |
| Times Tied | 7 | |
| Time with Lead | 27:40 | 07:10 |

| | DUK | KEN |
|-----------------------|-----|-----|
| Points from Turnovers | 15 | 9 |
| Paint | 46 | 26 |
| Second Chance | 10 | 9 |
| Fast Breaks | 12 | 10 |
| Bench | 6 | 25 |

| | Period by Period Scoring | | |
|-----|--------------------------|-----|-----|
| | 1st | 2nd | TOT |
| DUK | 46 | 26 | 72 |
| KEN | 37 | 40 | 77 |



Duke at Kentucky

11/12/24 State Farm Arena, Atlanta
2024-25 Men's Basketball

Game Time: 9:00 PM
Game Duration: 2:20
Attendance: 16,107

Officials: Joe Lindsay, Ron Groover, Courtney Green

Period 1

Quarter Starters:

| | | | | | |
|------------|------------|------------|--------------|--------------|---------------|
| KEN | 00 Oweh O | 1 Butler L | 2 Robinson J | 7 Carr A | 22 Williams A |
| DUK | 1 Foster C | 2 Flagg C | 5 Proctor T | 7 Knueppel K | 9 Maluach K |

| Game Time | KEN | Score | Diff | DUK |
|-----------|---|-------------|-----------|--|
| 20:00 | 22 WILLIAMS A jumpball won | | | 9 MALUACH K jumpball lost |
| 19:33 | 7 CARR A 2pt FG in the paint, turnaround jump shot missed | | | |
| 19:29 | | | | 9 MALUACH K defensive rebound (1) |
| 19:17 | | 0-2 | -2 | 2 FLAGG C 2pt FG in the paint, alleyoop made (2) |
| 19:17 | | | | 1 FOSTER C assist (1) |
| 19:09 | 22 WILLIAMS A 2pt FG in the paint, driving layup blocked | | | |
| 19:09 | | | | 9 MALUACH K block (1) |
| 19:08 | offensive rebound (1) | | | |
| 18:54 | 00 OWEH O turnover bad pass (1) | | | 1 FOSTER C steal (1) |
| 18:49 | | 0-4 | -4 | 5 PROCTOR T 2pt FG fast break from turnover in the paint, layup made (2) |
| 18:49 | | | | 1 FOSTER C assist (2) |
| 18:43 | 00 OWEH O foul drawn (1) | | | 7 KNUEPPEL K foul shooting (1 - 1) |
| 18:43 | 00 OWEH O free throw fast break 1 - 2 made (1) | 1-4 | -3 | |
| 18:43 | 00 OWEH O free throw fast break 2 - 2 missed | | | |
| 18:41 | | | | 2 FLAGG C defensive rebound (1) |
| 18:24 | 7 CARR A foul personal (1 - 1) | | | 2 FLAGG C foul drawn (1) |
| 18:17 | | | | 7 KNUEPPEL K 3pt FG , jump shot missed |
| 18:13 | 1 BUTLER L defensive rebound (1) | | | |
| 18:01 | 1 BUTLER L 2pt FG in the paint, layup made (2) | 3-4 | -1 | |
| 18:01 | 22 WILLIAMS A assist (1) | | | |
| 17:52 | | | | 2 FLAGG C 3pt FG , jump shot missed |
| 17:47 | | | | 9 MALUACH K offensive rebound (2) |
| 17:47 | | 3-6 | -3 | 9 MALUACH K 2pt FG second chance in the paint, tip-in layup made (2) |
| 17:36 | 7 CARR A 3pt FG , jump shot made (3) | 6-6 | 0 | |
| 17:36 | 00 OWEH O assist (1) | | | |
| 17:17 | | | | 1 FOSTER C 3pt FG , step back jump shot missed |
| 17:12 | 2 ROBINSON J defensive rebound (1) | | | |
| 17:03 | 22 WILLIAMS A 2pt FG in the paint, hook shot missed | | | |
| 16:59 | | | | 9 MALUACH K defensive rebound (3) |
| 16:53 | 00 OWEH O foul personal (1 - 2) | | | 7 KNUEPPEL K foul drawn (1) |
| 16:53 | 22 WILLIAMS A substitution out | | | |
| 16:53 | 10 GARRISON B substitution in | | | |
| 16:41 | | 6-8 | -2 | 5 PROCTOR T 2pt FG in the paint, pull up jump shot made (4) |
| 16:21 | 00 OWEH O 3pt FG , jump shot made (4) | 9-8 | 1 | |
| 16:21 | 10 GARRISON B assist (1) | | | |
| 15:58 | | 9-11 | -2 | 5 PROCTOR T 3pt FG , step back jump shot made (7) |
| 15:58 | | | | 1 FOSTER C assist (3) |
| 15:42 | 1 BUTLER L turnover lost ball (1) | | | 1 FOSTER C steal (2) |
| 15:41 | 1 BUTLER L foul personal (1 - 3) | | | 7 KNUEPPEL K foul drawn (2) |
| 15:41 | Timeout media | | | |
| 15:40 | 00 OWEH O substitution out | | | |
| 15:40 | 4 BREA K substitution in | | | |



Duke at Kentucky

11/12/24 State Farm Arena, Atlanta
2024-25 Men's Basketball

Game Time: 9:00 PM
Game Duration: 2:20
Attendance: 16,107

Officials: Joe Lindsay, Ron Groover, Courtney Green

| Game Time | KEN | Score | Diff | DUK |
|-----------|---|--------------|-----------|--|
| 15:40 | | | | 9 MALUACH K substitution out |
| 15:40 | | | | 6 BROWN M substitution in |
| 15:33 | | | | 5 PROCTOR T 3pt FG from turnover, jump shot missed |
| 15:29 | 7 CARR A defensive rebound (1) | | | |
| 15:22 | 7 CARR A 3pt FG , jump shot made (6) | 12-11 | 1 | |
| 15:22 | 1 BUTLER L assist (1) | | | |
| 15:10 | | 12-13 | -1 | 2 FLAGG C 2pt FG outside the paint, pull up jump shot made (4) |
| 14:59 | 10 GARRISON B foul drawn (1) | | | 6 BROWN M foul personal (1 - 2) |
| 14:59 | 1 BUTLER L substitution out | | | |
| 14:59 | 77 KRIISA K substitution in | | | |
| 14:59 | | | | 1 FOSTER C substitution out |
| 14:59 | | | | 14 JAMES S substitution in |
| 14:45 | 77 KRIISA K 3pt FG , pull up jump shot made (3) | 15-13 | 2 | |
| 14:45 | 7 CARR A assist (1) | | | |
| 14:32 | | | | 7 KNUEPPEL K 2pt FG in the paint, driving layup blocked |
| 14:32 | 2 ROBINSON J block (1) | | | |
| 14:31 | defensive rebound (5) | | | |
| 14:31 | 7 CARR A substitution out | | | |
| 14:31 | 15 ALMONOR A substitution in | | | |
| 14:31 | | | | 7 KNUEPPEL K substitution out |
| 14:31 | | | | 18 GILLIS M substitution in |
| 14:17 | 15 ALMONOR A 3pt FG , jump shot made (3) | 18-13 | 5 | |
| 14:17 | 4 BREA K assist (1) | | | |
| 14:02 | | | | 14 JAMES S 2pt FG outside the paint, floating jump shot missed |
| 13:58 | 10 GARRISON B defensive rebound (1) | | | |
| 13:51 | 2 ROBINSON J foul drawn (1) | | | 2 FLAGG C foul shooting (1 - 3) |
| 13:51 | 2 ROBINSON J free throw 1 - 3 made (1) | 19-13 | 6 | |
| 13:51 | 2 ROBINSON J free throw 2 - 3 missed | | | |
| 13:51 | offensive dead ball rebound (1) | | | |
| 13:51 | 10 GARRISON B substitution out | | | |
| 13:51 | 22 WILLIAMS A substitution in | | | |
| 13:51 | | | | 5 PROCTOR T substitution out |
| 13:51 | | | | 1 FOSTER C substitution in |
| 13:51 | 2 ROBINSON J free throw 3 - 3 missed | | | |
| 13:50 | | | | 14 JAMES S defensive rebound (1) |
| 13:39 | 15 ALMONOR A foul shooting (1 - 4) | | | 2 FLAGG C foul drawn (2) |
| 13:39 | | 19-14 | 5 | 2 FLAGG C free throw 1 - 2 made (5) |
| 13:39 | 2 ROBINSON J substitution out | | | |
| 13:39 | 5 CHANDLER C substitution in | | | |
| 13:39 | | | | 6 BROWN M substitution out |
| 13:39 | | | | 9 MALUACH K substitution in |
| 13:39 | | 19-15 | 4 | 2 FLAGG C free throw 2 - 2 made (6) |
| 13:17 | 4 BREA K 3pt FG , jump shot missed | | | |
| 13:16 | | | | defensive rebound (6) |
| 13:02 | | 19-17 | 2 | 2 FLAGG C 2pt FG in the paint, floating jump shot made (8) |
| 12:31 | 22 WILLIAMS A 2pt FG in the paint, hook shot missed | | | |
| 12:26 | | | | 2 FLAGG C defensive rebound (2) |
| 12:17 | | | | 2 FLAGG C 2pt FG in the paint, pull up jump shot blocked |
| 12:17 | 4 BREA K block (1) | | | |



Duke at Kentucky

11/12/24 State Farm Arena, Atlanta
2024-25 Men's Basketball

Game Time: 9:00 PM
Game Duration: 2:20
Attendance: 16,107

Officials: Joe Lindsay, Ron Groover, Courtney Green

| Game Time | KEN | Score | Diff | DUK |
|-----------|--|--------------|----------|--|
| 12:13 | 4 BREA K defensive rebound (1) | | | |
| 12:02 | 15 ALMONOR A 3pt FG , jump shot missed | | | |
| 11:58 | | | | 1 FOSTER C defensive rebound (1) |
| 11:52 | | 19-19 | 0 | 14 JAMES S 2pt FG fast break in the paint, dunk, made (2) |
| 11:52 | | | | 1 FOSTER C assist (4) |
| 11:31 | 22 WILLIAMS A 2pt FG in the paint, floating jump shot made (2) | 21-19 | 2 | |
| 11:31 | 15 ALMONOR A assist (1) | | | |
| 11:24 | 77 KRIISA K foul personal (1 - 5) | | | 1 FOSTER C foul drawn (1) |
| 11:24 | Timeout media | | | |
| 11:24 | 5 CHANDLER C substitution out | | | |
| 11:24 | 77 KRIISA K substitution out | | | |
| 11:24 | 00 OWEH O substitution in | | | |
| 11:24 | 1 BUTLER L substitution in | | | |
| 11:24 | | | | 2 FLAGG C substitution out |
| 11:24 | | | | 7 KNUEPPEL K substitution in |
| 11:19 | | | | 7 KNUEPPEL K 2pt FG in the paint, pull up jump shot missed |
| 11:17 | defensive rebound (8) | | | |
| 11:08 | 1 BUTLER L 2pt FG in the paint, jump shot blocked | | | |
| 11:08 | | | | 9 MALUACH K block (2) |
| 11:05 | offensive rebound (9) | | | |
| 11:00 | 4 BREA K 3pt FG second chance, jump shot missed | | | |
| 10:56 | | | | 1 FOSTER C defensive rebound (2) |
| 10:45 | | 21-21 | 0 | 1 FOSTER C 2pt FG in the paint, floating jump shot made (2) |
| 10:38 | 1 BUTLER L 3pt FG , jump shot missed | | | |
| 10:32 | | | | 18 GILLIS M defensive rebound (1) |
| 10:27 | | | | 1 FOSTER C 2pt FG in the paint, floating jump shot missed |
| 10:23 | | | | 1 FOSTER C offensive rebound (3) |
| 10:09 | | | | 14 JAMES S 2pt FG second chance in the paint, driving layup missed |
| 10:05 | 00 OWEH O defensive rebound (1) | | | |
| 09:55 | 22 WILLIAMS A 2pt FG outside the paint, jump shot made (4) | 23-21 | 2 | |
| 09:55 | 22 WILLIAMS A foul drawn (1) | | | 9 MALUACH K foul shooting (1 - 4) |
| 09:55 | 4 BREA K substitution out | | | |
| 09:55 | 15 ALMONOR A substitution out | | | |
| 09:55 | 2 ROBINSON J substitution in | | | |
| 09:55 | 7 CARR A substitution in | | | |
| 09:55 | | | | 18 GILLIS M substitution out |
| 09:55 | | | | 5 PROCTOR T substitution in |
| 09:55 | | | | 14 JAMES S substitution out |
| 09:55 | | | | 2 FLAGG C substitution in |
| 09:55 | 22 WILLIAMS A free throw 1 - 1 made (5) | 24-21 | 3 | |
| 09:37 | 00 OWEH O foul personal (2 - 6) | | | 7 KNUEPPEL K foul drawn (3) |
| 09:37 | 00 OWEH O substitution out | | | |
| 09:37 | 77 KRIISA K substitution in | | | |
| 09:30 | | | | 2 FLAGG C 3pt FG , jump shot missed |
| 09:27 | defensive rebound (11) | | | |
| 09:27 | 22 WILLIAMS A substitution out | | | |
| 09:27 | 10 GARRISON B substitution in | | | |
| 09:27 | | | | 9 MALUACH K substitution out |



Duke at Kentucky

11/12/24 State Farm Arena, Atlanta
2024-25 Men's Basketball

Game Time: 9:00 PM
Game Duration: 2:20
Attendance: 16,107

Officials: Joe Lindsay, Ron Groover, Courtney Green

| Game Time | KEN | Score | Diff | DUK |
|-----------|---|--------------|-----------|---|
| 09:27 | | | | 6 BROWN M substitution in |
| 09:14 | 1 BUTLER L 3pt FG , pull up jump shot missed | | | |
| 09:12 | | | | defensive dead ball rebound (1) |
| 09:12 | 7 CARR A foul loose ball (2 - 7) | | | 7 KNUEPPEL K foul drawn (4) |
| 09:12 | 7 CARR A substitution out | | | |
| 09:12 | 15 ALMONOR A substitution in | | | |
| 09:12 | | | | 7 KNUEPPEL K 1&1 free throw 1 missed |
| 09:11 | 10 GARRISON B defensive rebound (2) | | | |
| 08:58 | 1 BUTLER L turnover travel (2) | | | |
| 08:47 | 10 GARRISON B foul personal (1 - 8) | | | 2 FLAGG C foul drawn (3) |
| 08:47 | | 24-22 | 2 | 2 FLAGG C 1&1 free throw 1 made (9) |
| 08:47 | | 24-23 | 1 | 2 FLAGG C 1&1 free throw 2 made (10) |
| 08:32 | 77 KRIISA K 3pt FG , jump shot missed | | | |
| 08:28 | | | | 7 KNUEPPEL K defensive rebound (1) |
| 08:23 | 1 BUTLER L foul shooting (2 - 9) | | | 7 KNUEPPEL K foul drawn (5) |
| 08:23 | | 24-24 | 0 | 7 KNUEPPEL K free throw 1 - 3 made (1) |
| 08:23 | | 24-25 | -1 | 7 KNUEPPEL K free throw 2 - 3 made (2) |
| 08:23 | 1 BUTLER L substitution out | | | |
| 08:23 | 00 OWEH O substitution in | | | |
| 08:23 | | 24-26 | -2 | 7 KNUEPPEL K free throw 3 - 3 made (3) |
| 07:53 | 77 KRIISA K 2pt FG outside the paint, pull up jump shot missed | | | |
| 07:49 | | | | 2 FLAGG C defensive rebound (3) |
| 07:45 | | | | 5 PROCTOR T 3pt FG , jump shot missed |
| 07:41 | 00 OWEH O defensive rebound (2) | | | |
| 07:37 | 00 OWEH O turnover bad pass (2) | | | 5 PROCTOR T steal (1) |
| 07:32 | | 24-28 | -4 | 2 FLAGG C 2pt FG fast break from turnover in the paint, layup made (12) |
| 07:32 | | | | 7 KNUEPPEL K assist (1) |
| 07:32 | Timeout 30 Sec | | | |
| 07:32 | | | | Timeout media |
| 07:32 | 10 GARRISON B substitution out | | | |
| 07:32 | 15 ALMONOR A substitution out | | | |
| 07:32 | 7 CARR A substitution in | | | |
| 07:32 | 22 WILLIAMS A substitution in | | | |
| 07:17 | 00 OWEH O 2pt FG in the paint, floating jump shot missed | | | |
| 07:11 | 22 WILLIAMS A offensive rebound (1) | | | |
| 07:11 | 22 WILLIAMS A 2pt FG second chance in the paint, tip-in dunk missed | | | |
| 07:10 | | | | 7 KNUEPPEL K defensive rebound (2) |
| 07:08 | | 24-30 | -6 | 7 KNUEPPEL K 2pt FG fast break in the paint, driving layup made (5) |
| 06:59 | 00 OWEH O 3pt FG , jump shot missed | | | |
| 06:55 | 7 CARR A offensive rebound (2) | | | |
| 06:54 | 77 KRIISA K 3pt FG second chance, jump shot missed | | | |
| 06:50 | | | | 2 FLAGG C defensive rebound (4) |
| 06:46 | | | | 7 KNUEPPEL K 3pt FG , jump shot missed |
| 06:43 | 22 WILLIAMS A defensive rebound (2) | | | |
| 06:40 | 7 CARR A foul drawn (1) | | | 2 FLAGG C foul personal (2 - 5) |
| 06:40 | | | | 2 FLAGG C substitution out |
| 06:40 | | | | 18 GILLIS M substitution in |



Duke at Kentucky

11/12/24 State Farm Arena, Atlanta
2024-25 Men's Basketball

Game Time: 9:00 PM
Game Duration: 2:20
Attendance: 16,107

Officials: Joe Lindsay, Ron Groover, Courtney Green

| Game Time | KEN | Score | Diff | DUK |
|-----------|--|--------------|------------|--|
| 06:40 | | | | 1 FOSTER C substitution out |
| 06:40 | | | | 14 JAMES S substitution in |
| 06:20 | 7 CARR A foul drawn (2) | | | 18 GILLIS M foul personal (1 - 6) |
| 06:20 | | | | 6 BROWN M substitution out |
| 06:20 | | | | 9 MALUACH K substitution in |
| 06:06 | 22 WILLIAMS A 2pt FG in the paint, hook shot missed | | | |
| 06:01 | 00 OWEH O offensive rebound (3) | | | |
| 06:01 | 00 OWEH O 2pt FG second chance in the paint, tip-in layup made (6) | 26-30 | -4 | |
| 05:41 | | | | 7 KNUEPPEL K 2pt FG in the paint, pull up jump shot missed |
| 05:38 | 22 WILLIAMS A defensive rebound (3) | | | |
| 05:29 | 2 ROBINSON J foul offensive (1 - 10) | | | 5 PROCTOR T foul drawn (1) |
| 05:29 | 2 ROBINSON J turnover offensive (1) | | | |
| 05:29 | 2 ROBINSON J substitution out | | | |
| 05:29 | 22 WILLIAMS A substitution out | | | |
| 05:29 | 77 KRIISA K substitution out | | | |
| 05:29 | 1 BUTLER L substitution in | | | |
| 05:29 | 4 BREA K substitution in | | | |
| 05:29 | 10 GARRISON B substitution in | | | |
| 05:16 | | 26-33 | -7 | 7 KNUEPPEL K 3pt FG from turnover, jump shot made (8) |
| 05:16 | | | | 14 JAMES S assist (1) |
| 04:58 | 4 BREA K 3pt FG , step back jump shot made (3) | 29-33 | -4 | |
| 04:42 | | | | 7 KNUEPPEL K 3pt FG , jump shot missed |
| 04:38 | 1 BUTLER L defensive rebound (2) | | | |
| 04:32 | 1 BUTLER L 2pt FG in the paint, turnaround jump shot missed | | | |
| 04:28 | | | | 18 GILLIS M defensive rebound (2) |
| 04:18 | | 29-36 | -7 | 5 PROCTOR T 3pt FG , step back jump shot made (10) |
| 04:15 | Timeout 30 Sec | | | |
| 04:15 | Timeout media | | | |
| 03:56 | 1 BUTLER L foul drawn (1) | | | 14 JAMES S foul personal (1 - 7) |
| 03:56 | 1 BUTLER L 1&1 free throw 1 missed | | | |
| 03:54 | | | | 7 KNUEPPEL K defensive rebound (3) |
| 03:39 | | 29-38 | -9 | 7 KNUEPPEL K 2pt FG in the paint, driving layup made (10) |
| 03:27 | 1 BUTLER L 3pt FG , pull up jump shot made (5) | 32-38 | -6 | |
| 03:27 | 10 GARRISON B assist (2) | | | |
| 03:04 | | 32-40 | -8 | 9 MALUACH K 2pt FG in the paint, dunk, made (4) |
| 03:04 | | | | 5 PROCTOR T assist (1) |
| 02:57 | 00 OWEH O turnover lost ball (3) | | | 7 KNUEPPEL K steal (1) |
| 02:45 | | | | 5 PROCTOR T 2pt FG from turnover in the paint, pull up jump shot missed |
| 02:40 | | | | 9 MALUACH K offensive rebound (4) |
| 02:40 | | 32-42 | -10 | 9 MALUACH K 2pt FG from turnover second chance in the paint, tip-in layup made (6) |
| 02:28 | 7 CARR A foul drawn (3) | | | 9 MALUACH K foul shooting (2 - 8) |
| 02:28 | 7 CARR A free throw 1 - 2 made (7) | 33-42 | -9 | |
| 02:28 | 00 OWEH O substitution out | | | |
| 02:28 | 1 BUTLER L substitution out | | | |
| 02:28 | 10 GARRISON B substitution out | | | |
| 02:28 | 2 ROBINSON J substitution in | | | |
| 02:28 | 22 WILLIAMS A substitution in | | | |



Duke at Kentucky

11/12/24 State Farm Arena, Atlanta
2024-25 Men's Basketball

Game Time: 9:00 PM
Game Duration: 2:20
Attendance: 16,107

Officials: Joe Lindsay, Ron Groover, Courtney Green

| Game Time | KEN | Score | Diff | DUK |
|----------------------|--|--------------|-----------|--|
| 02:28 | 77 KRIISA K substitution in | | | |
| 02:28 | | | | 9 MALUACH K substitution out |
| 02:28 | | | | 18 GILLIS M substitution out |
| 02:28 | | | | 1 FOSTER C substitution in |
| 02:28 | | | | 6 BROWN M substitution in |
| 02:28 | 7 CARR A free throw 2 - 2 made (8) | 34-42 | -8 | |
| 02:15 | | | | 7 KNUEPPEL K 3pt FG , jump shot missed |
| 02:14 | 22 WILLIAMS A defensive rebound (4) | | | |
| 02:14 | 22 WILLIAMS A foul drawn (2) | | | 6 BROWN M foul personal (2 - 9) |
| 02:14 | 22 WILLIAMS A 1&1 free throw 1 made (6) | 35-42 | -7 | |
| 02:14 | 22 WILLIAMS A 1&1 free throw 2 made (7) | 36-42 | -6 | |
| 01:58 | | 36-44 | -8 | 1 FOSTER C 2pt FG in the paint, floating jump shot made (4) |
| 01:48 | 22 WILLIAMS A foul drawn (3) | | | 6 BROWN M foul personal (3 - 10) |
| 01:48 | 22 WILLIAMS A free throw 1 - 2 made (8) | 37-44 | -7 | |
| 01:48 | 22 WILLIAMS A free throw 2 - 2 missed | | | |
| 01:46 | | | | 14 JAMES S defensive rebound (2) |
| 01:33 | 77 KRIISA K foul drawn (1) | | | 1 FOSTER C foul offensive (1 - 11) |
| 01:33 | | | | 1 FOSTER C turnover offensive (1) |
| 01:23 | 77 KRIISA K 3pt FG from turnover, jump shot missed | | | |
| 01:19 | | | | 6 BROWN M defensive rebound (1) |
| 00:58 | | 37-46 | -9 | 7 KNUEPPEL K 2pt FG in the paint, pull up jump shot made (12) |
| 00:46 | 7 CARR A substitution out | | | |
| 00:46 | 15 ALMONOR A substitution in | | | |
| 00:36 | 22 WILLIAMS A 2pt FG in the paint, layup missed | | | |
| 00:32 | | | | 5 PROCTOR T defensive rebound (1) |
| 00:09 | | | | 7 KNUEPPEL K 2pt FG in the paint, driving layup blocked |
| 00:09 | 22 WILLIAMS A block (1) | | | |
| 00:05 | 22 WILLIAMS A defensive rebound (5) | | | |
| 00:05 | 22 WILLIAMS A turnover bad pass (1) | | | |
| 00:05 | | | | Timeout 30 Sec |
| 00:05 | | | | 6 BROWN M substitution out |
| 00:05 | | | | 2 FLAGG C substitution in |
| 00:01 | | | | 1 FOSTER C 2pt FG from turnover in the paint, floating jump shot blocked |
| 00:01 | 2 ROBINSON J block (2) | | | |
| 00:00 | | | | offensive dead ball rebound (2) |
| END OF PERIOD | | | | |
| KEN 37-46 DUK | | | | |



Duke at Kentucky

11/12/24 State Farm Arena, Atlanta
2024-25 Men's Basketball

Game Time: 9:00 PM
Game Duration: 2:20
Attendance: 16,107

Officials: Joe Lindsay, Ron Groover, Courtney Green

Duke - 46

| NO. | Name | Min | FG | 3P | FT | Rebounds | | | Fouls | | TP | AS | TO | ST | Blocks | | +/- |
|---------------|----------------|---------|-------|------|-----|----------|----|-----|-------|----|----|----|----|----|--------|----|-----|
| | | | M-A | M-A | M-A | OR | DR | TOT | PF | FD | | | | | BS | BA | |
| 2 | Cooper Flagg | F 11:56 | 4-7 | 0-2 | 4-4 | 0 | 4 | 4 | 2 | 3 | 12 | 0 | 0 | 0 | 0 | 1 | 6 |
| 9 | Khaman Maluach | C 12:24 | 3-3 | 0-0 | 0-0 | 2 | 2 | 4 | 2 | 0 | 6 | 0 | 0 | 0 | 2 | 0 | 7 |
| 1 | Caleb Foster | G 14:40 | 2-5 | 0-1 | 0-0 | 1 | 2 | 3 | 1 | 1 | 4 | 4 | 1 | 2 | 0 | 1 | 13 |
| 5 | Tyrese Proctor | G 16:04 | 4-7 | 2-4 | 0-0 | 0 | 1 | 1 | 0 | 1 | 10 | 1 | 0 | 1 | 0 | 0 | 5 |
| 7 | Kon Knueppel | G 16:53 | 4-12 | 1-5 | 3-4 | 0 | 3 | 3 | 1 | 5 | 12 | 1 | 0 | 1 | 0 | 2 | 9 |
| 6 | Maliq Brown | 07:31 | 0-0 | 0-0 | 0-0 | 0 | 1 | 1 | 3 | 0 | 0 | 0 | 0 | 0 | 0 | 0 | 2 |
| 14 | Sion James | 11:44 | 1-3 | 0-0 | 0-0 | 0 | 2 | 2 | 1 | 0 | 2 | 1 | 0 | 0 | 0 | 0 | 0 |
| 18 | Mason Gillis | 08:48 | 0-0 | 0-0 | 0-0 | 0 | 2 | 2 | 1 | 0 | 0 | 0 | 0 | 0 | 0 | 0 | 3 |
| Team | | | | | | 0 | 1 | 1 | | | 0 | | 0 | | | | |
| Totals | | | 18-37 | 3-12 | 7-8 | 3 | 18 | 21 | 11 | 10 | 46 | 7 | 1 | 4 | 2 | 4 | 9 |

| Shooting By Period | | |
|--------------------|-------|-------|
| 1st FG% | 18-37 | 48.6% |
| 3PT% | 3-12 | 25.0% |
| FT% | 7-8 | 87.5% |
| GM FG% | 18-37 | 48.6% |
| 3PT% | 3-12 | 25.0% |
| FT% | 7-8 | 87.5% |

Dead Ball Rebounds: 1, 1

Technical Fouls::NONE

Kentucky - 37

| NO. | Name | Min | FG | 3P | FT | Rebounds | | | Fouls | | TP | AS | TO | ST | Blocks | | +/- |
|---------------|------------------|---------|-------|------|------|----------|----|-----|-------|----|----|----|----|----|--------|----|-----|
| | | | M-A | M-A | M-A | OR | DR | TOT | PF | FD | | | | | BS | BA | |
| 7 | Andrew Carr | F 12:58 | 2-3 | 2-2 | 2-2 | 1 | 1 | 2 | 2 | 3 | 8 | 1 | 0 | 0 | 0 | 0 | -2 |
| 22 | Amari Williams | F 12:02 | 2-8 | 0-0 | 4-5 | 1 | 4 | 5 | 0 | 3 | 8 | 1 | 1 | 0 | 1 | 1 | -3 |
| 00 | Otega Oweh | G 12:02 | 2-4 | 1-2 | 1-2 | 1 | 2 | 3 | 2 | 1 | 6 | 1 | 3 | 0 | 0 | 0 | -9 |
| 1 | Lamont Butler | G 11:03 | 2-6 | 1-3 | 0-1 | 0 | 2 | 2 | 2 | 1 | 5 | 1 | 2 | 0 | 0 | 1 | -9 |
| 2 | Jaxson Robinson | G 13:15 | 0-0 | 0-0 | 1-3 | 0 | 1 | 1 | 1 | 1 | 1 | 0 | 1 | 0 | 2 | 0 | -1 |
| 10 | Brandon Garrison | 07:58 | 0-0 | 0-0 | 0-0 | 0 | 2 | 2 | 1 | 1 | 0 | 2 | 0 | 0 | 0 | 0 | -6 |
| 4 | Koby Brea | 11:14 | 1-3 | 1-3 | 0-0 | 0 | 1 | 1 | 0 | 0 | 3 | 1 | 0 | 0 | 1 | 0 | -1 |
| 77 | Kerr Kriisa | 10:11 | 1-5 | 1-4 | 0-0 | 0 | 0 | 0 | 1 | 1 | 3 | 0 | 0 | 0 | 0 | 0 | -4 |
| 15 | Ansley Almonor | 07:02 | 1-2 | 1-2 | 0-0 | 0 | 0 | 0 | 1 | 0 | 3 | 1 | 0 | 0 | 0 | 0 | -7 |
| 5 | Collin Chandler | 02:15 | 0-0 | 0-0 | 0-0 | 0 | 0 | 0 | 0 | 0 | 0 | 0 | 0 | 0 | 0 | 0 | -3 |
| Team | | | | | | 2 | 3 | 5 | | | 0 | | 0 | | | | |
| Totals | | | 11-31 | 7-16 | 8-13 | 5 | 16 | 21 | 10 | 11 | 37 | 8 | 7 | 0 | 4 | 2 | -9 |

| Shooting By Period | | |
|--------------------|-------|-------|
| 1st FG% | 11-31 | 35.5% |
| 3PT% | 7-16 | 43.8% |
| FT% | 8-13 | 61.5% |
| GM FG% | 11-31 | 35.5% |
| 3PT% | 7-16 | 43.8% |
| FT% | 8-13 | 61.5% |

Dead Ball Rebounds: 1, 0

Technical Fouls::NONE

| | DUK | KEN |
|------------------|---------------------------|---------------------------|
| Biggest lead | 10 (1 st 2:40) | 6 (1 st 13:51) |
| Best Scoring Run | 9(1 st 7:08) | 7(1 st 13:51) |
| Lead Changes | 6 | |
| Times Tied | 4 | |
| Time with Lead | 11:25 | 05:46 |

| | DUK | KEN |
|---------------|-----|-----|
| Points from | | |
| Turnovers | 11 | 0 |
| Paint | 28 | 6 |
| Second Chance | 4 | 2 |
| Fast Breaks | 8 | 1 |
| Bench | 2 | 9 |

| | Period by Period Scoring | | |
|-----|--------------------------|-----|-----|
| | 1st | 2nd | TOT |
| DUK | 46 | 26 | 72 |
| KEN | 37 | 40 | 77 |



Duke at Kentucky

11/12/24 State Farm Arena, Atlanta
2024-25 Men's Basketball

Game Time: 9:00 PM
Game Duration: 2:20
Attendance: 16,107

Officials: Joe Lindsay, Ron Groover, Courtney Green

Period 2

Quarter Starters:

| | | | | | |
|------------|------------|------------|--------------|--------------|---------------|
| KEN | 00 Oweh O | 1 Butler L | 2 Robinson J | 7 Carr A | 22 Williams A |
| DUK | 1 Foster C | 2 Flagg C | 5 Proctor T | 7 Knueppel K | 9 Maluach K |

| Game Time | KEN | Score | Diff | DUK |
|-----------|--|--------------|-----------|--|
| 20:00 | 4 BREA K substitution out | | | |
| 20:00 | 15 ALMONOR A substitution out | | | |
| 20:00 | 77 KRIISA K substitution out | | | |
| 20:00 | 00 OWEH O substitution in | | | |
| 20:00 | 1 BUTLER L substitution in | | | |
| 20:00 | 7 CARR A substitution in | | | |
| 20:00 | | | | 14 JAMES S substitution out |
| 20:00 | | | | 9 MALUACH K substitution in |
| 19:44 | | | | 2 FLAGG C 2pt FG outside the paint, turnaround jump shot missed |
| 19:43 | defensive rebound (22) | | | |
| 19:32 | 00 OWEH O 2pt FG outside the paint, pull up jump shot missed | | | |
| 19:28 | 22 WILLIAMS A offensive rebound (6) | | | |
| 19:28 | jump ball situation | | | |
| 19:26 | 2 ROBINSON J 3pt FG second chance, jump shot missed | | | |
| 19:22 | 22 WILLIAMS A offensive rebound (7) | | | |
| 19:20 | 00 OWEH O 3pt FG second chance, jump shot made (9) | 40-46 | -6 | |
| 19:20 | 1 BUTLER L assist (2) | | | |
| 18:52 | 2 ROBINSON J steal (1) | | | 1 FOSTER C turnover lost ball (2) |
| 18:41 | 22 WILLIAMS A 2pt FG from turnover in the paint, hook shot made (10) | 42-46 | -4 | |
| 18:19 | | | | 2 FLAGG C 3pt FG , pull up jump shot missed |
| 18:14 | | | | 9 MALUACH K offensive rebound (5) |
| 18:12 | | | | 2 FLAGG C 3pt FG second chance, jump shot missed |
| 18:09 | defensive rebound (25) | | | |
| 17:52 | 00 OWEH O 2pt FG in the paint, layup blocked | | | |
| 17:52 | | | | 2 FLAGG C block (1) |
| 17:48 | | | | 2 FLAGG C defensive rebound (5) |
| 17:48 | 1 BUTLER L foul personal (3 - 1) | | | 2 FLAGG C foul drawn (4) |
| 17:48 | 1 BUTLER L substitution out | | | |
| 17:48 | 77 KRIISA K substitution in | | | |
| 17:34 | | 42-48 | -6 | 9 MALUACH K 2pt FG in the paint, dunk, made (8) |
| 17:34 | | | | 7 KNUEPPEL K assist (2) |
| 17:06 | 7 CARR A 2pt FG in the paint, hook shot made (10) | 44-48 | -4 | |
| 17:06 | 00 OWEH O assist (2) | | | |
| 16:52 | | 44-50 | -6 | 7 KNUEPPEL K 2pt FG in the paint, turnaround jump shot made (14) |
| 16:41 | 7 CARR A foul drawn (4) | | | 5 PROCTOR T foul shooting (1 - 1) |
| 16:41 | 7 CARR A free throw 1 - 2 made (11) | 45-50 | -5 | |
| 16:41 | 22 WILLIAMS A substitution out | | | |
| 16:41 | 10 GARRISON B substitution in | | | |
| 16:41 | 7 CARR A free throw 2 - 2 missed | | | |
| 16:39 | | | | 9 MALUACH K defensive rebound (6) |
| 16:27 | | | | 7 KNUEPPEL K 3pt FG , jump shot missed |



Duke at Kentucky

11/12/24 State Farm Arena, Atlanta
2024-25 Men's Basketball

Game Time: 9:00 PM
Game Duration: 2:20
Attendance: 16,107

Officials: Joe Lindsay, Ron Groover, Courtney Green

| Game Time | KEN | Score | Diff | DUK |
|-----------|--|--------------|-----------|--|
| 16:24 | 77 KRIISA K defensive rebound (1) | | | |
| 16:16 | 00 OWEH O foul drawn (2) | | | 7 KNUEPPEL K foul personal (2 - 2) |
| 15:54 | turnover shot clock (8) | | | |
| 15:54 | Timeout media | | | |
| 15:31 | 77 KRIISA K foul personal (2 - 2) | | | 2 FLAGG C foul drawn (5) |
| 15:14 | | 45-52 | -7 | 2 FLAGG C 2pt FG from turnover in the paint, layup made (14) |
| 15:14 | | | | 7 KNUEPPEL K assist (3) |
| 14:50 | 7 CARR A 2pt FG in the paint, hook shot blocked | | | |
| 14:50 | | | | 2 FLAGG C block (2) |
| 14:46 | | | | 5 PROCTOR T defensive rebound (2) |
| 14:45 | | | | 1 FOSTER C 3pt FG , jump shot missed |
| 14:40 | 10 GARRISON B defensive rebound (3) | | | |
| 14:36 | 2 ROBINSON J 3pt FG , jump shot missed | | | |
| 14:32 | | | | 2 FLAGG C defensive rebound (6) |
| 14:16 | | 45-54 | -9 | 9 MALUACH K 2pt FG in the paint, layup made (10) |
| 14:16 | | | | 2 FLAGG C assist (1) |
| 14:09 | 10 GARRISON B 2pt FG fast break in the paint, driving layup made (2) | 47-54 | -7 | |
| 14:09 | 00 OWEH O assist (3) | | | |
| 14:07 | 00 OWEH O substitution out | | | |
| 14:07 | 7 CARR A substitution out | | | |
| 14:07 | 77 KRIISA K substitution out | | | |
| 14:07 | 1 BUTLER L substitution in | | | |
| 14:07 | 4 BREA K substitution in | | | |
| 14:07 | 15 ALMONOR A substitution in | | | |
| 14:07 | | | | 1 FOSTER C substitution out |
| 14:07 | | | | 9 MALUACH K substitution out |
| 14:07 | | | | 6 BROWN M substitution in |
| 14:07 | | | | 14 JAMES S substitution in |
| 13:55 | | | | 7 KNUEPPEL K 2pt FG in the paint, driving layup missed |
| 13:52 | 4 BREA K defensive rebound (2) | | | |
| 13:44 | 2 ROBINSON J 2pt FG in the paint, driving layup missed | | | |
| 13:40 | | | | 2 FLAGG C defensive rebound (7) |
| 13:37 | | 47-56 | -9 | 14 JAMES S 2pt FG fast break in the paint, layup made (4) |
| 13:37 | | | | 2 FLAGG C assist (2) |
| 13:18 | 10 GARRISON B turnover bad pass (1) | | | |
| 13:18 | 10 GARRISON B substitution out | | | |
| 13:18 | 22 WILLIAMS A substitution in | | | |
| 13:10 | 4 BREA K foul shooting (1 - 3) | | | 2 FLAGG C foul drawn (6) |
| 13:10 | | | | 2 FLAGG C free throw 1 - 2 missed |
| 13:10 | | | | offensive dead ball rebound (3) |
| 13:10 | 2 ROBINSON J substitution out | | | |
| 13:10 | 00 OWEH O substitution in | | | |
| 13:10 | | | | 2 FLAGG C free throw 2 - 2 missed |
| 13:08 | 4 BREA K defensive rebound (3) | | | |
| 12:48 | 4 BREA K 3pt FG , pull up jump shot made (6) | 50-56 | -6 | |
| 12:48 | 1 BUTLER L assist (3) | | | |
| 12:48 | | | | 14 JAMES S substitution out |
| 12:48 | | | | 1 FOSTER C substitution in |



Duke at Kentucky

11/12/24 State Farm Arena, Atlanta
2024-25 Men's Basketball

Game Time: 9:00 PM
Game Duration: 2:20
Attendance: 16,107

Officials: Joe Lindsay, Ron Groover, Courtney Green

| Game Time | KEN | Score | Diff | DUK |
|-----------|--|--------------|-----------|--|
| 12:26 | | | | 1 FOSTER C 2pt FG in the paint, floating jump shot missed |
| 12:20 | 00 OWEH O defensive rebound (4) | | | |
| 12:15 | 00 OWEH O 2pt FG in the paint, driving layup missed | | | |
| 12:12 | | | | 5 PROCTOR T defensive rebound (3) |
| 12:07 | | | | 5 PROCTOR T 3pt FG , jump shot missed |
| 12:04 | 00 OWEH O defensive rebound (5) | | | |
| 11:58 | 22 WILLIAMS A 2pt FG in the paint, floating jump shot missed | | | |
| 11:55 | | | | 6 BROWN M defensive rebound (2) |
| 11:34 | | | | 7 KNUEPPEL K 2pt FG in the paint, driving layup missed |
| 11:29 | | | | 6 BROWN M offensive rebound (3) |
| 11:29 | | | | 6 BROWN M 2pt FG second chance in the paint, tip-in layup missed |
| 11:28 | | | | 6 BROWN M offensive rebound (4) |
| 11:28 | | | | 1 FOSTER C 3pt FG second chance, jump shot missed |
| 11:27 | | | | 6 BROWN M offensive rebound (5) |
| 11:26 | | | | 1 FOSTER C 3pt FG second chance, jump shot missed |
| 11:25 | 1 BUTLER L defensive rebound (3) | | | |
| 11:18 | 1 BUTLER L 2pt FG fast break in the paint, layup made (7) | 52-56 | -4 | |
| 11:18 | 1 BUTLER L foul drawn (2) | | | 5 PROCTOR T foul shooting (2 - 3) |
| 11:18 | Timeout media | | | |
| 11:18 | 15 ALMONOR A substitution out | | | |
| 11:18 | 7 CARR A substitution in | | | |
| 11:18 | | | | 1 FOSTER C substitution out |
| 11:18 | | | | 6 BROWN M substitution out |
| 11:18 | | | | 9 MALUACH K substitution in |
| 11:18 | | | | 18 GILLIS M substitution in |
| 11:18 | 1 BUTLER L free throw fast break 1 - 1 made (8) | 53-56 | -3 | |
| 10:57 | | | | 2 FLAGG C 2pt FG in the paint, pull up jump shot blocked |
| 10:57 | 22 WILLIAMS A block (2) | | | |
| 10:51 | | | | 18 GILLIS M offensive rebound (3) |
| 10:51 | | 53-58 | -5 | 18 GILLIS M 2pt FG second chance in the paint, tip-in layup made (2) |
| 10:33 | 22 WILLIAMS A 2pt FG in the paint, hook shot missed | | | |
| 10:29 | | | | 9 MALUACH K defensive rebound (7) |
| 10:21 | | 53-61 | -8 | 2 FLAGG C 3pt FG , jump shot made (17) |
| 10:21 | | | | 5 PROCTOR T assist (2) |
| 09:55 | 22 WILLIAMS A 2pt FG in the paint, hook shot blocked | | | |
| 09:55 | | | | 9 MALUACH K block (3) |
| 09:50 | | | | 2 FLAGG C defensive rebound (8) |
| 09:43 | | | | 2 FLAGG C 2pt FG outside the paint, pull up jump shot missed |
| 09:40 | | | | 7 KNUEPPEL K offensive rebound (4) |
| 09:29 | | | | 7 KNUEPPEL K 2pt FG second chance in the paint, driving layup missed |
| 09:25 | 22 WILLIAMS A defensive rebound (8) | | | |
| 09:20 | 4 BREA K 2pt FG in the paint, layup made (8) | 55-61 | -6 | |
| 09:20 | 1 BUTLER L assist (4) | | | |
| 09:10 | | | | 9 MALUACH K substitution out |
| 09:10 | | | | 6 BROWN M substitution in |
| 09:10 | 22 WILLIAMS A substitution out | | | |
| 09:10 | 10 GARRISON B substitution in | | | |



Duke at Kentucky

11/12/24 State Farm Arena, Atlanta
2024-25 Men's Basketball

Game Time: 9:00 PM
Game Duration: 2:20
Attendance: 16,107

Officials: Joe Lindsay, Ron Groover, Courtney Green

| Game Time | KEN | Score | Diff | DUK |
|-----------|--|--------------|-----------|--|
| 08:55 | | | | 18 GILLIS M 2pt FG in the paint, driving layup blocked |
| 08:55 | 7 CARR A block (1) | | | |
| 08:54 | 7 CARR A defensive rebound (3) | | | |
| 08:53 | 7 CARR A turnover bad pass (1) | | | 6 BROWN M steal (1) |
| 08:50 | 10 GARRISON B steal (1) | | | 6 BROWN M turnover bad pass (1) |
| 08:43 | 1 BUTLER L 2pt FG from turnover in the paint, layup missed | | | |
| 08:38 | 10 GARRISON B offensive rebound (4) | | | |
| 08:38 | 10 GARRISON B 2pt FG from turnover second chance in the paint, tip-in layup made (4) | 57-61 | -4 | |
| 08:29 | | | | Timeout 30 Sec |
| 08:23 | | | | 18 GILLIS M 3pt FG , jump shot missed |
| 08:19 | 4 BREA K defensive rebound (4) | | | |
| 07:57 | 7 CARR A 3pt FG , jump shot missed | | | |
| 07:52 | | | | 6 BROWN M defensive rebound (6) |
| 07:33 | | 57-63 | -6 | 2 FLAGG C 2pt FG in the paint, pull up jump shot made (19) |
| 07:20 | 10 GARRISON B 2pt FG outside the paint, jump shot made (6) | 59-63 | -4 | |
| 07:20 | 7 CARR A assist (2) | | | |
| 06:56 | | | | 2 FLAGG C 2pt FG outside the paint, pull up jump shot missed |
| 06:53 | 4 BREA K defensive rebound (5) | | | |
| 06:49 | 10 GARRISON B 2pt FG fast break in the paint, layup made (8) | 61-63 | -2 | |
| 06:49 | 4 BREA K assist (2) | | | |
| 06:32 | | | | 7 KNUEPPEL K 2pt FG in the paint, driving layup blocked |
| 06:32 | 00 OWEH O block (1) | | | |
| 06:31 | | | | offensive rebound (38) |
| 06:31 | Timeout media | | | |
| 06:31 | 1 BUTLER L substitution out | | | |
| 06:31 | 4 BREA K substitution out | | | |
| 06:31 | 2 ROBINSON J substitution in | | | |
| 06:31 | 77 KRIISA K substitution in | | | |
| 06:31 | | | | 18 GILLIS M substitution out |
| 06:31 | | | | 1 FOSTER C substitution in |
| 06:30 | 10 GARRISON B foul shooting (2 - 4) | | | 5 PROCTOR T foul drawn (2) |
| 06:30 | | | | 5 PROCTOR T free throw 1 - 3 missed |
| 06:30 | | | | offensive dead ball rebound (4) |
| 06:30 | | 61-64 | -3 | 5 PROCTOR T free throw 2 - 3 made (11) |
| 06:30 | | 61-65 | -4 | 5 PROCTOR T free throw 3 - 3 made (12) |
| 06:10 | 00 OWEH O 2pt FG in the paint, floating jump shot missed | | | |
| 06:06 | | | | 2 FLAGG C defensive rebound (9) |
| 05:41 | | | | 5 PROCTOR T 2pt FG in the paint, turnaround jump shot missed |
| 05:36 | 7 CARR A defensive rebound (4) | | | |
| 05:28 | 77 KRIISA K 3pt FG , pull up jump shot made (6) | 64-65 | -1 | |
| 05:11 | | | | 7 KNUEPPEL K 3pt FG , jump shot blocked |
| 05:11 | 10 GARRISON B block (1) | | | |
| 05:05 | 7 CARR A defensive rebound (5) | | | |
| 04:54 | 77 KRIISA K 3pt FG , pull up jump shot missed | | | |
| 04:51 | | | | 7 KNUEPPEL K defensive rebound (5) |
| 04:38 | | | | 1 FOSTER C 3pt FG , jump shot missed |
| 04:35 | 77 KRIISA K defensive rebound (2) | | | |
| 04:25 | 10 GARRISON B 2pt FG in the paint, layup missed | | | |



Duke at Kentucky

11/12/24 State Farm Arena, Atlanta
2024-25 Men's Basketball

Game Time: 9:00 PM
Game Duration: 2:20
Attendance: 16,107

Officials: Joe Lindsay, Ron Groover, Courtney Green

| Game Time | KEN | Score | Diff | DUK |
|-----------|--|--------------|-----------|--|
| 04:22 | | | | 2 FLAGG C defensive rebound (10) |
| 04:18 | 00 OWEH O foul shooting (3 - 5) | | | 2 FLAGG C foul drawn (7) |
| 04:18 | | 64-66 | -2 | 2 FLAGG C free throw fast break 1 - 2 made (20) |
| 04:18 | 00 OWEH O substitution out | | | |
| 04:18 | 10 GARRISON B substitution out | | | |
| 04:18 | 77 KRIISA K substitution out | | | |
| 04:18 | 1 BUTLER L substitution in | | | |
| 04:18 | 4 BREA K substitution in | | | |
| 04:18 | 22 WILLIAMS A substitution in | | | |
| 04:18 | | | | 6 BROWN M substitution out |
| 04:18 | | | | 18 GILLIS M substitution in |
| 04:18 | | 64-67 | -3 | 2 FLAGG C free throw fast break 2 - 2 made (21) |
| 03:57 | 7 CARR A 2pt FG in the paint, driving layup made (13) | 66-67 | -1 | |
| 03:57 | 22 WILLIAMS A assist (2) | | | |
| 03:57 | 7 CARR A foul drawn (5) | | | 5 PROCTOR T foul shooting (3 - 4) |
| 03:57 | Timeout media | | | |
| 03:57 | 22 WILLIAMS A substitution out | | | |
| 03:57 | 00 OWEH O substitution in | | | |
| 03:57 | | | | 18 GILLIS M substitution out |
| 03:57 | | | | 9 MALUACH K substitution in |
| 03:57 | 7 CARR A free throw 1 - 1 made (14) | 67-67 | 0 | |
| 03:41 | | | | 2 FLAGG C 2pt FG outside the paint, pull up jump shot missed |
| 03:38 | defensive rebound (41) | | | |
| 03:18 | 2 ROBINSON J 3pt FG , jump shot missed | | | |
| 03:13 | | | | 2 FLAGG C defensive rebound (11) |
| 02:55 | 00 OWEH O steal (1) | | | 7 KNUEPPEL K turnover bad pass (1) |
| 02:40 | 00 OWEH O 2pt FG from turnover in the paint, layup made (11) | 69-67 | 2 | |
| 02:40 | 7 CARR A assist (3) | | | |
| 02:16 | 4 BREA K foul personal (2 - 6) | | | 2 FLAGG C foul drawn (8) |
| 02:09 | | | | Timeout 30 Sec |
| 02:01 | | 69-69 | 0 | 2 FLAGG C 2pt FG in the paint, floating jump shot made (23) |
| 02:01 | 4 BREA K foul shooting (3 - 7) | | | 2 FLAGG C foul drawn (9) |
| 02:01 | | 69-70 | -1 | 2 FLAGG C free throw 1 - 1 made (24) |
| 01:49 | 7 CARR A 2pt FG in the paint, driving layup made (16) | 71-70 | 1 | |
| 01:49 | 7 CARR A foul drawn (6) | | | 9 MALUACH K foul shooting (3 - 5) |
| 01:49 | 4 BREA K substitution out | | | |
| 01:49 | 10 GARRISON B substitution in | | | |
| 01:49 | 7 CARR A free throw 1 - 1 made (17) | 72-70 | 2 | |
| 01:41 | | | | 2 FLAGG C turnover lost ball (1) |
| 01:41 | | | | 9 MALUACH K substitution out |
| 01:41 | | | | 6 BROWN M substitution in |
| 01:23 | 7 CARR A turnover lost ball (2) | | | 6 BROWN M steal (2) |
| 01:22 | 10 GARRISON B foul personal (3 - 8) | | | 1 FOSTER C foul drawn (2) |
| 01:22 | 1 BUTLER L substitution out | | | |
| 01:22 | 77 KRIISA K substitution in | | | |
| 01:22 | | | | 1 FOSTER C 1&1 free throw 1 missed |
| 01:20 | | | | 6 BROWN M offensive rebound (7) |
| 01:14 | | 72-72 | 0 | 2 FLAGG C 2pt FG from turnover second chance in the paint, driving layup made (26) |



Duke at Kentucky

11/12/24 State Farm Arena, Atlanta
2024-25 Men's Basketball

Officials: Joe Lindsay, Ron Groover, Courtney Green

| Game Time | KEN | Score | Diff | DUK |
|----------------------|--|--------------|----------|--|
| 00:42 | 77 KRIISA K 3pt FG , jump shot blocked | | | |
| 00:42 | | | | 6 BROWN M block (1) |
| 00:35 | 7 CARR A offensive rebound (6) | | | |
| 00:33 | 77 KRIISA K 2pt FG second chance outside the paint, jump shot missed | | | |
| 00:30 | | | | 1 FOSTER C defensive rebound (4) |
| 00:26 | | | | Timeout 60 Sec |
| 00:26 | 10 GARRISON B substitution out | | | |
| 00:26 | 77 KRIISA K substitution out | | | |
| 00:26 | 1 BUTLER L substitution in | | | |
| 00:26 | 22 WILLIAMS A substitution in | | | |
| 00:12 | 00 OWEH O steal (2) | | | 2 FLAGG C turnover lost ball (2) |
| 00:10 | 00 OWEH O foul drawn (3) | | | 7 KNUEPPEL K foul shooting (3 - 6) |
| 00:10 | 00 OWEH O free throw fast break 1 - 2 made (12) | 73-72 | 1 | |
| 00:10 | 00 OWEH O free throw fast break 2 - 2 made (13) | 74-72 | 2 | |
| 00:05 | | | | 2 FLAGG C turnover out of bounds (3) |
| 00:05 | 22 WILLIAMS A substitution out | | | |
| 00:05 | 4 BREA K substitution in | | | |
| 00:05 | 1 BUTLER L foul drawn (3) | | | 1 FOSTER C foul personal (2 - 7) |
| 00:05 | 4 BREA K substitution out | | | |
| 00:05 | 22 WILLIAMS A substitution in | | | |
| 00:05 | 1 BUTLER L 1&1 free throw 1 made (9) | 75-72 | 3 | |
| 00:05 | 1 BUTLER L 1&1 free throw 2 missed | | | |
| 00:04 | 00 OWEH O offensive rebound (6) | | | |
| 00:00 | 00 OWEH O foul drawn (4) | | | 1 FOSTER C foul personal (3 - 8) |
| 00:00 | 00 OWEH O 1&1 free throw 1 made (14) | 76-72 | 4 | |
| 00:00 | 00 OWEH O 1&1 free throw 2 made (15) | 77-72 | 5 | |
| 00:00 | | | | 7 KNUEPPEL K 3pt FG , jump shot missed |
| 00:00 | | | | offensive dead ball rebound (5) |
| END OF GAME | | | | |
| KEN 77-72 DUK | | | | |



Duke at Kentucky

11/12/24 State Farm Arena, Atlanta
2024-25 Men's Basketball

Game Time: 9:00 PM
Game Duration: 2:20
Attendance: 16,107

Officials: Joe Lindsay, Ron Groover, Courtney Green

Duke - 26

| NO. | Name | Min | FG | | | Rebounds | | | Fouls | | TP | AS | TO | ST | Blocks | | +/- |
|---------------|----------------|---------|-------|------|-----|----------|----|-----|-------|----|----|----|----|----|--------|-----|-----|
| | | | M-A | M-A | M-A | OR | DR | TOT | PF | FD | | | | | BS | BA | |
| 2 | Cooper Flagg | F 20:00 | 5-12 | 1-3 | 3-5 | 0 | 7 | 7 | 0 | 6 | 14 | 2 | 3 | 0 | 2 | 1 | -14 |
| 9 | Khaman Maluach | C 10:17 | 2-2 | 0-0 | 0-0 | 1 | 2 | 3 | 1 | 0 | 4 | 0 | 0 | 0 | 1 | 0 | -3 |
| 1 | Caleb Foster | G 13:54 | 0-5 | 0-4 | 0-1 | 0 | 1 | 1 | 2 | 1 | 0 | 0 | 1 | 0 | 0 | -11 | |
| 5 | Tyrese Proctor | G 20:00 | 0-2 | 0-1 | 2-3 | 0 | 2 | 2 | 3 | 1 | 2 | 1 | 0 | 0 | 0 | -14 | |
| 7 | Kon Knueppel | G 20:00 | 1-8 | 0-3 | 0-0 | 1 | 1 | 2 | 2 | 0 | 2 | 2 | 1 | 0 | 0 | -14 | |
| 6 | Maliq Brown | 09:22 | 0-1 | 0-0 | 0-0 | 4 | 2 | 6 | 0 | 0 | 0 | 0 | 1 | 2 | 1 | -10 | |
| 14 | Sion James | 01:19 | 1-1 | 0-0 | 0-0 | 0 | 0 | 0 | 0 | 0 | 2 | 0 | 0 | 0 | 0 | -1 | |
| 18 | Mason Gillis | 05:08 | 1-3 | 0-1 | 0-0 | 1 | 0 | 1 | 0 | 0 | 2 | 0 | 0 | 0 | 0 | -3 | |
| Team | | | | | | 1 | 0 | 1 | | | 0 | | 0 | | | | |
| Totals | | | 10-34 | 1-12 | 5-9 | 8 | 15 | 23 | 8 | 8 | 26 | 5 | 6 | 2 | 4 | 4 | -14 |

| Shooting By Period | | |
|---------------------|-------|-------|
| 2 nd FG% | 10-34 | 29.4% |
| 3PT% | 1-12 | 8.3% |
| FT% | 5-9 | 55.6% |
| GM FG% | 10-34 | 29.4% |
| 3PT% | 1-12 | 8.3% |
| FT% | 5-9 | 55.6% |

Dead Ball Rebounds: 3, 0

Technical Fouls::NONE

Kentucky - 40

| NO. | Name | Min | FG | | | Rebounds | | | Fouls | | TP | AS | TO | ST | Blocks | | +/- |
|---------------|------------------|---------|-------|-----|------|----------|----|-----|-------|----|----|----|----|----|--------|----|-----|
| | | | M-A | M-A | M-A | OR | DR | TOT | PF | FD | | | | | BS | BA | |
| 7 | Andrew Carr | F 17:11 | 3-5 | 0-1 | 3-4 | 1 | 3 | 4 | 0 | 3 | 9 | 2 | 2 | 0 | 1 | 1 | 11 |
| 22 | Amari Williams | F 08:14 | 1-4 | 0-0 | 0-0 | 2 | 1 | 3 | 0 | 0 | 2 | 1 | 0 | 0 | 1 | 1 | 13 |
| 00 | Otega Owheh | G 18:42 | 2-6 | 1-1 | 4-4 | 1 | 2 | 3 | 1 | 3 | 9 | 2 | 0 | 2 | 1 | 1 | 15 |
| 1 | Lamont Butler | G 13:11 | 1-2 | 0-0 | 2-3 | 0 | 1 | 1 | 1 | 2 | 4 | 3 | 0 | 0 | 0 | 0 | 19 |
| 2 | Jaxson Robinson | G 13:21 | 0-4 | 0-3 | 0-0 | 0 | 0 | 0 | 0 | 0 | 0 | 0 | 0 | 1 | 0 | 0 | 7 |
| 77 | Kerr Kriisa | 06:50 | 1-4 | 1-3 | 0-0 | 0 | 2 | 2 | 1 | 0 | 3 | 0 | 0 | 0 | 0 | 1 | -5 |
| 10 | Brandon Garrison | 09:38 | 4-5 | 0-0 | 0-0 | 1 | 1 | 2 | 2 | 0 | 8 | 0 | 1 | 1 | 1 | 0 | -1 |
| 4 | Koby Brea | 10:05 | 2-2 | 1-1 | 0-0 | 0 | 4 | 4 | 3 | 0 | 5 | 1 | 0 | 0 | 0 | 0 | 8 |
| 15 | Ansley Almonor | 02:49 | 0-0 | 0-0 | 0-0 | 0 | 0 | 0 | 0 | 0 | 0 | 0 | 0 | 0 | 0 | 0 | 3 |
| Team | | | | | | 0 | 3 | 3 | | | 0 | | 1 | | | | |
| Totals | | | 14-32 | 3-9 | 9-11 | 5 | 17 | 22 | 8 | 8 | 40 | 9 | 4 | 4 | 4 | 4 | 14 |

| Shooting By Period | | |
|---------------------|-------|-------|
| 2 nd FG% | 14-32 | 43.8% |
| 3PT% | 3-9 | 33.3% |
| FT% | 9-11 | 81.8% |
| GM FG% | 14-32 | 43.8% |
| 3PT% | 3-9 | 33.3% |
| FT% | 9-11 | 81.8% |

Dead Ball Rebounds: 0, 0

Technical Fouls::NONE

| | DUK | KEN |
|------------------|---------------------------|--------------------------|
| Biggest lead | 9 (2 nd 19:44) | 5 (2 nd 0:00) |
| Best Scoring Run | 5(2 nd 10:21) | 6(2 nd 11:18) |
| Lead Changes | 3 | |
| Times Tied | 3 | |
| Time with Lead | 15:59 | 01:24 |

| Points from | DUK | KEN |
|---------------|-----|-----|
| Turnovers | 4 | 9 |
| Paint | 18 | 20 |
| Second Chance | 6 | 7 |
| Fast Breaks | 4 | 9 |
| Bench | 4 | 16 |

| | Period by Period Scoring | | |
|-----|--------------------------|-----|-----|
| | 1st | 2nd | TOT |
| DUK | 46 | 26 | 72 |
| KEN | 37 | 40 | 77 |



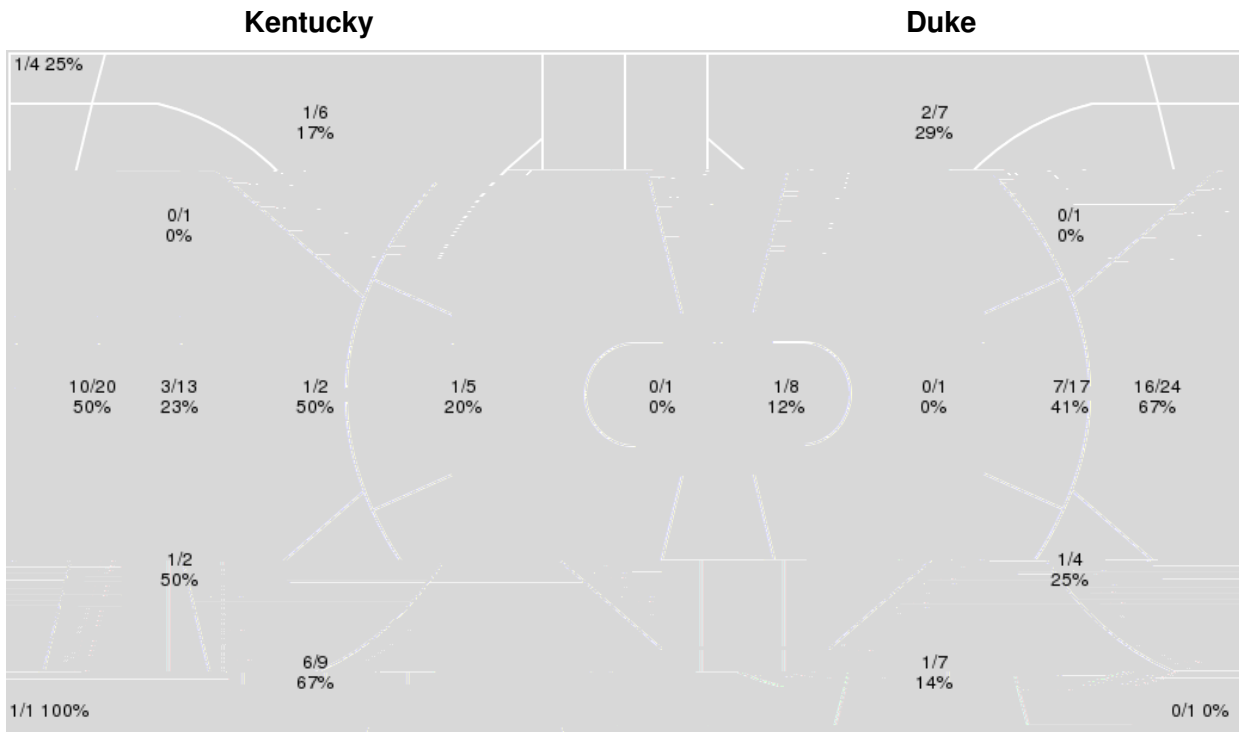
Duke at Kentucky

11/12/24 State Farm Arena, Atlanta
2024-25 Men's Basketball

Officials: Joe Lindsay, Ron Groover, Courtney Green

{ Players => All; } FG Types => All; Results => All;

{ Players => All; } FG Types => All; Results => All;



| Kentucky | M/A | % |
|-------------|-------|----|
| Field Goals | 25/63 | 40 |
| 2 Points | 15/38 | 39 |
| 3 Points | 10/25 | 40 |
| Free Throws | 17/24 | 71 |

| Duke | M/A | % |
|-------------|-------|----|
| Field Goals | 28/71 | 39 |
| 2 Points | 24/47 | 51 |
| 3 Points | 4/24 | 17 |
| Free Throws | 12/17 | 71 |



Duke at Kentucky

11/12/24 State Farm Arena, Atlanta
2024-25 Men's Basketball

Game Time: 9:00 PM
Game Duration: 2:20
Attendance: 16,107

Officials: Joe Lindsay, Ron Groover, Courtney Green

Duke

| No | Name | Mins | | Score | | Points Diff | | Points per Min | | Assists | | Rebounds | | Steals | | Turnovers | |
|----|----------------|-------|-------|---------|---------|-------------|-----|----------------|------|---------|-----|----------|-----|--------|-----|-----------|-----|
| | | On | Off | On | Off | On | Off | On | Off | On | Off | On | Off | On | Off | On | Off |
| 1 | Caleb Foster | 28:34 | 11:26 | 51 - 49 | 21 - 28 | 2 | -7 | 1.79 | 1.84 | 8 | 4 | 34 | 10 | 4 | 2 | 6 | 1 |
| 2 | Cooper Flagg | 31:56 | 08:04 | 54 - 62 | 18 - 15 | -8 | 3 | 1.69 | 2.23 | 10 | 2 | 35 | 9 | 5 | 1 | 6 | 1 |
| 5 | Tyrese Proctor | 36:04 | 03:56 | 64 - 73 | 8 - 4 | -9 | 4 | 1.77 | 2.03 | 11 | 1 | 37 | 7 | 6 | 0 | 7 | 0 |
| 6 | Maliq Brown | 16:53 | 23:07 | 25 - 33 | 47 - 44 | -8 | 3 | 1.48 | 2.03 | 2 | 10 | 21 | 23 | 3 | 3 | 4 | 3 |
| 7 | Kon Knueppel | 36:53 | 03:07 | 66 - 71 | 6 - 6 | -5 | 0 | 1.79 | 1.93 | 11 | 1 | 40 | 4 | 6 | 0 | 7 | 0 |
| 9 | Khaman Maluach | 22:41 | 17:19 | 46 - 42 | 26 - 35 | 4 | -9 | 2.03 | 1.50 | 10 | 2 | 23 | 21 | 3 | 3 | 3 | 4 |
| 14 | Sion James | 13:03 | 26:57 | 26 - 27 | 46 - 50 | -1 | -4 | 1.99 | 1.71 | 4 | 8 | 14 | 30 | 1 | 5 | 1 | 6 |
| 18 | Mason Gillis | 13:56 | 26:04 | 28 - 28 | 44 - 49 | 0 | -5 | 2.01 | 1.69 | 4 | 8 | 16 | 28 | 2 | 4 | 1 | 6 |

Kentucky

| No | Name | Mins | | Score | | Points Diff | | Points per Min | | Assists | | Rebounds | | Steals | | Turnovers | |
|----|------------------|-------|-------|---------|---------|-------------|-----|----------------|------|---------|-----|----------|-----|--------|-----|-----------|-----|
| | | On | Off | On | Off | On | Off | On | Off | On | Off | On | Off | On | Off | On | Off |
| 00 | Otega Oweh | 30:44 | 09:16 | 59 - 53 | 18 - 19 | 6 | -1 | 1.92 | 1.94 | 12 | 5 | 34 | 9 | 4 | 0 | 8 | 3 |
| 1 | Lamont Butler | 24:14 | 15:47 | 54 - 44 | 23 - 28 | 10 | -5 | 2.23 | 1.46 | 12 | 5 | 26 | 17 | 4 | 0 | 7 | 4 |
| 2 | Jaxson Robinson | 26:36 | 13:24 | 52 - 46 | 25 - 26 | 6 | -1 | 1.95 | 1.87 | 11 | 6 | 29 | 14 | 3 | 1 | 9 | 2 |
| 4 | Koby Brea | 21:19 | 18:41 | 46 - 39 | 31 - 33 | 7 | -2 | 2.16 | 1.66 | 11 | 6 | 21 | 22 | 2 | 2 | 4 | 7 |
| 5 | Collin Chandler | 02:15 | 37:45 | 2 - 5 | 75 - 67 | -3 | 8 | 0.89 | 1.99 | 1 | 16 | 1 | 42 | 0 | 4 | 0 | 11 |
| 7 | Andrew Carr | 30:09 | 09:51 | 64 - 55 | 13 - 17 | 9 | -4 | 2.12 | 1.32 | 14 | 3 | 30 | 13 | 4 | 0 | 7 | 4 |
| 10 | Brandon Garrison | 17:36 | 22:25 | 32 - 39 | 45 - 33 | -7 | 12 | 1.82 | 2.01 | 8 | 9 | 17 | 26 | 1 | 3 | 8 | 3 |
| 15 | Ansley Almonor | 09:51 | 30:09 | 13 - 17 | 64 - 55 | -4 | 9 | 1.32 | 2.12 | 3 | 14 | 13 | 30 | 0 | 4 | 4 | 7 |
| 22 | Amari Williams | 20:16 | 19:44 | 40 - 30 | 37 - 42 | 10 | -5 | 1.97 | 1.88 | 8 | 9 | 25 | 18 | 2 | 2 | 3 | 8 |
| 77 | Kerr Kriisa | 17:01 | 22:60 | 23 - 32 | 54 - 40 | -9 | 14 | 1.35 | 2.35 | 5 | 12 | 19 | 24 | 0 | 4 | 5 | 6 |



Duke at Kentucky

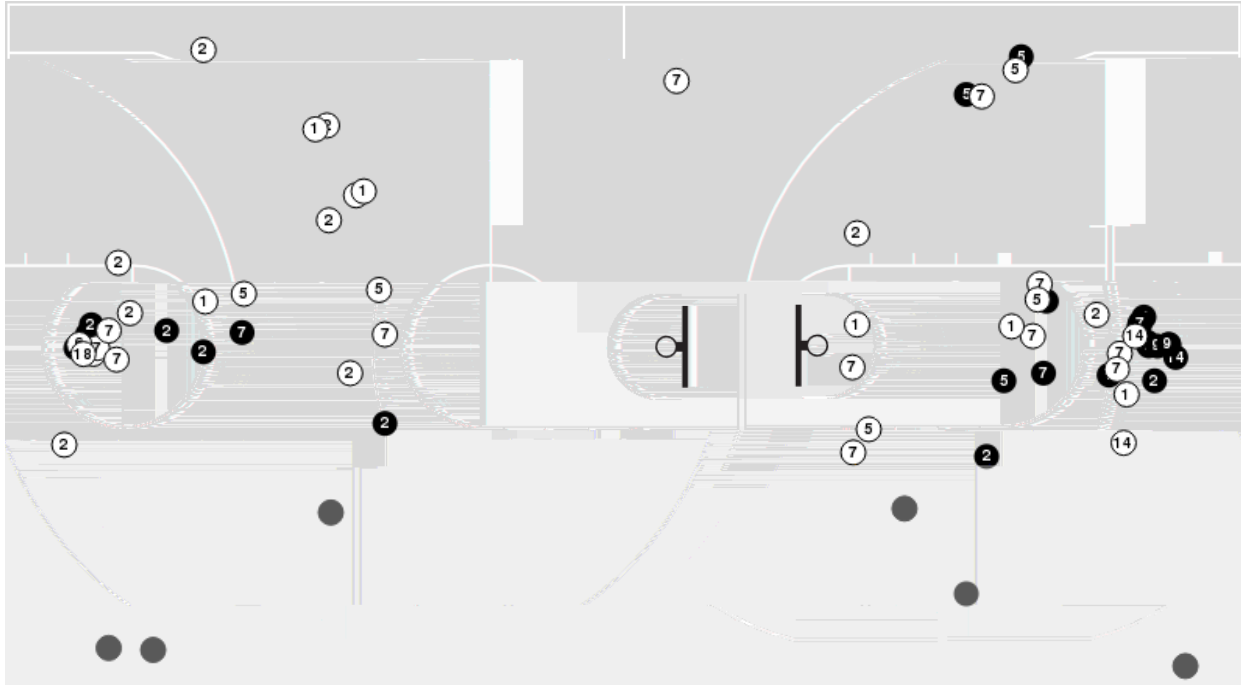
11/12/24 State Farm Arena, Atlanta
2024-25 Men's Basketball

Officials: Joe Lindsay, Ron Groover, Courtney Green

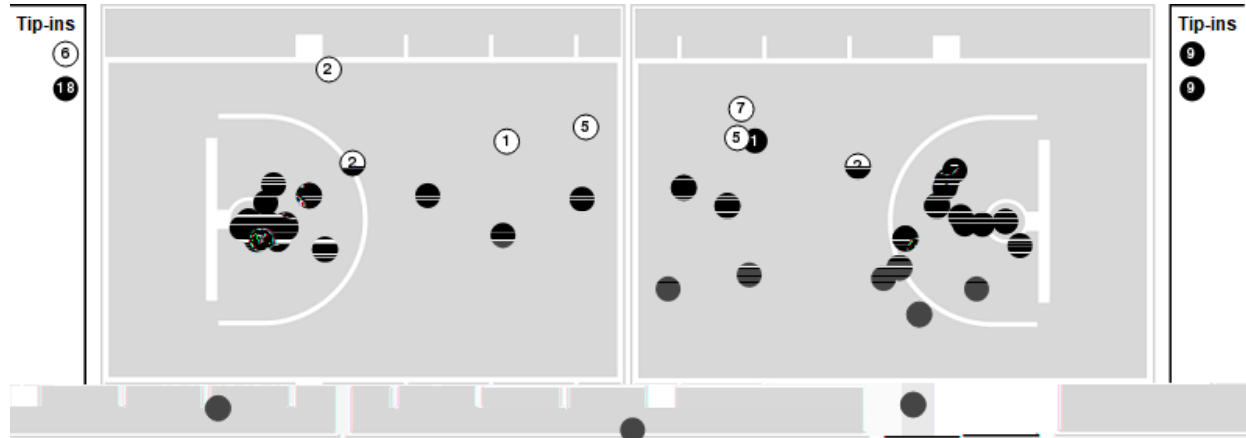
Players => AllFG Types=>AllResults=>All

Duke

All Field Goals



Blow Up Chart



● Made ○ Missed N - Player Number

| Duke | M/A | % |
|-------------|-------|----|
| Field Goals | 28/71 | 39 |
| 2 Points | 24/47 | 51 |
| 3 Points | 4/24 | 17 |
| Free Throws | 12/17 | 71 |

| Duke | M/A | % |
|----------------------|--------------|-----|
| Points in the Paint | 46 (23 / 41) | 56 |
| Fast Break Points | 12 (7/7) | 100 |
| Second Chance Points | 10 (6/13) | 46 |
| Effective FG% | 42 | |



Duke at Kentucky

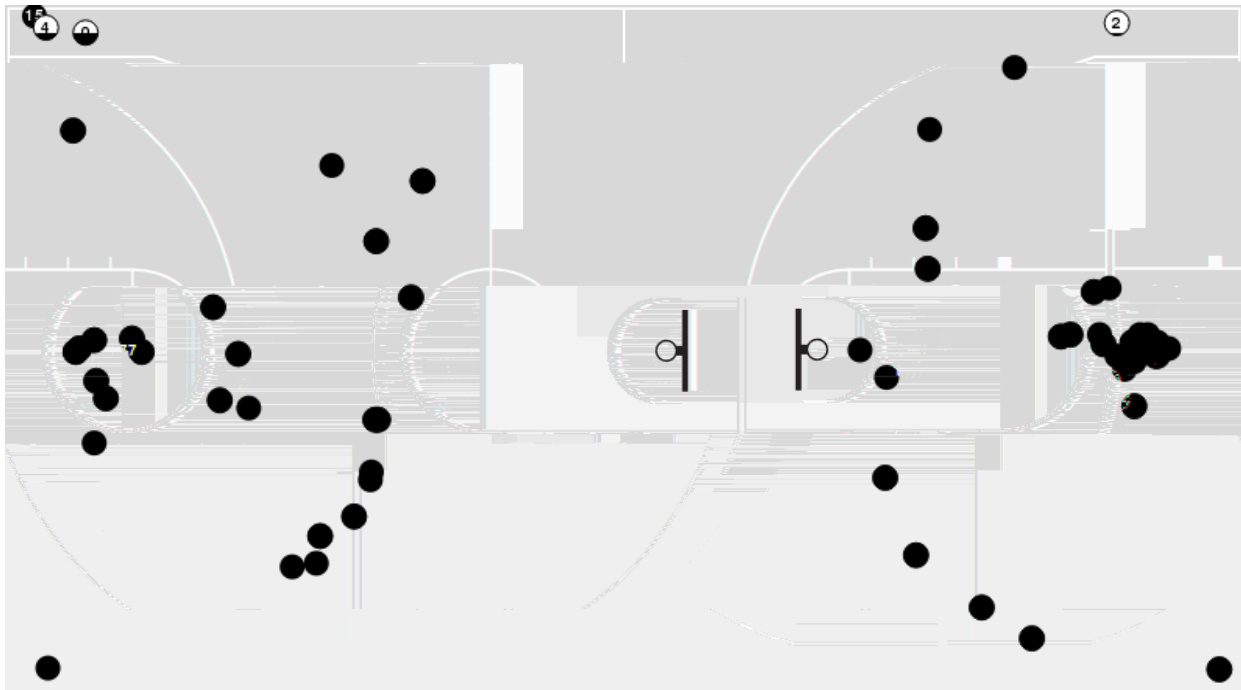
11/12/24 State Farm Arena, Atlanta
2024-25 Men's Basketball

Officials: Joe Lindsay, Ron Groover, Courtney Green

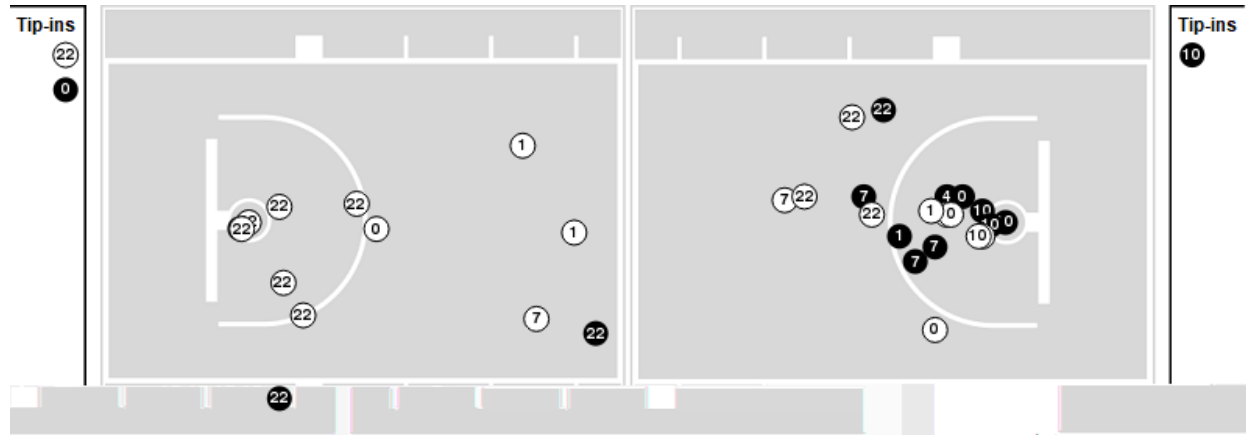
Players => AllFG Types=>AllResults=>All

Kentucky

All Field Goals



Blow Up Chart



● Made ○ Missed N - Player Number

| Kentucky | M/A | % |
|-------------|-------|----|
| Field Goals | 25/63 | 40 |
| 2 Points | 15/38 | 39 |
| 3 Points | 10/25 | 40 |
| Free Throws | 17/24 | 71 |

| Kentucky | M/A | % |
|----------------------|--------------|----|
| Points in the Paint | 26 (13 / 33) | 39 |
| Fast Break Points | 10 (7/8) | 88 |
| Second Chance Points | 9 (5/10) | 50 |
| Effective FG% | 48 | |



Duke at Kentucky

11/12/24 State Farm Arena, Atlanta
2024-25 Men's Basketball

Game Time: 9:00 PM
Game Duration: 2:20
Attendance: 16,107

Officials: Joe Lindsay, Ron Groover, Courtney Green

Duke

| Lineup | Quarter On | Time On | Quarter Off | Time Off | Time on Court | Score | Score Diff | Reb | Stl | Tov | Ass | PPP |
|---|------------|---------|-------------|----------|---------------|-------|------------|-----|-----|-----|-----|--------|
| 1- Foster C/ 2- Flagg C/ 5- Proctor T/ 7- Knueppel K/ 9- Maluach K/ | 1 | 20:00 | 1 | 15:40 | 04:20 | 11-9 | 2 | 4 | 2 | 0 | 3 | 1.5714 |
| 1- Foster C/ 2- Flagg C/ 5- Proctor T/ 6- Brown M/ 7- Knueppel K/ | 1 | 15:40 | 1 | 14:59 | 00:41 | 2-3 | -1 | 0 | 0 | 0 | 0 | 1.0000 |
| 2- Flagg C/ 5- Proctor T/ 6- Brown M/ 7- Knueppel K/ 14- James S/ | 1 | 14:59 | 1 | 14:31 | 00:28 | 0-3 | -3 | 0 | 0 | 0 | 0 | 0.0000 |
| 2- Flagg C/ 5- Proctor T/ 6- Brown M/ 14- James S/ 18- Gillis M/ | 1 | 14:31 | 1 | 13:51 | 00:40 | 0-4 | -4 | 0 | 0 | 0 | 0 | 0.0000 |
| 1- Foster C/ 2- Flagg C/ 6- Brown M/ 14- James S/ 18- Gillis M/ | 1 | 13:51 | 1 | 13:39 | 00:12 | 1-0 | 1 | 1 | 0 | 0 | 0 | 2.2727 |
| 1- Foster C/ 2- Flagg C/ 9- Maluach K/ 14- James S/ 18- Gillis M/ | 1 | 13:39 | 1 | 11:24 | 02:15 | 5-2 | 3 | 3 | 0 | 0 | 1 | 1.4535 |
| 1- Foster C/ 7- Knueppel K/ 9- Maluach K/ 14- James S/ 18- Gillis M/ | 1 | 11:24 | 1 | 09:55 | 01:29 | 2-2 | 0 | 3 | 0 | 0 | 0 | 0.6667 |
| 1- Foster C/ 5- Proctor T/ 7- Knueppel K/ 9- Maluach K/ 14- James S/ | 1 | 09:55 | 1 | 09:55 | 00:00 | 0-0 | 0 | 0 | 0 | 0 | 0 | 0.0000 |
| 1- Foster C/ 2- Flagg C/ 5- Proctor T/ 7- Knueppel K/ 9- Maluach K/ | 1 | 09:55 | 1 | 09:27 | 00:28 | 0-1 | -1 | 0 | 0 | 0 | 0 | 0.0000 |
| 1- Foster C/ 2- Flagg C/ 5- Proctor T/ 6- Brown M/ 7- Knueppel K/ | 1 | 09:27 | 1 | 06:40 | 02:47 | 9-0 | 9 | 4 | 1 | 0 | 1 | 1.3554 |
| 5- Proctor T/ 6- Brown M/ 7- Knueppel K/ 14- James S/ 18- Gillis M/ | 1 | 06:40 | 1 | 06:20 | 00:20 | 0-0 | 0 | 0 | 0 | 0 | 0 | 0.0000 |
| 5- Proctor T/ 7- Knueppel K/ 9- Maluach K/ 14- James S/ 18- Gillis M/ | 1 | 06:20 | 1 | 02:28 | 03:52 | 12-9 | 3 | 3 | 1 | 0 | 2 | 1.7143 |
| 1- Foster C/ 5- Proctor T/ 6- Brown M/ 7- Knueppel K/ 14- James S/ | 1 | 02:28 | 1 | 00:05 | 02:22 | 4-4 | 0 | 3 | 0 | 1 | 0 | 0.8000 |
| 1- Foster C/ 2- Flagg C/ 5- Proctor T/ 7- Knueppel K/ 14- James S/ | 1 | 00:05 | 2 | 20:00 | 00:05 | 0-0 | 0 | 0 | 0 | 0 | 0 | 0.0000 |
| 1- Foster C/ 2- Flagg C/ 5- Proctor T/ 7- Knueppel K/ 9- Maluach K/ | 2 | 20:00 | 2 | 14:07 | 05:53 | 8-10 | -2 | 5 | 0 | 1 | 3 | 0.8889 |
| 2- Flagg C/ 5- Proctor T/ 6- Brown M/ 7- Knueppel K/ 14- James S/ | 2 | 14:07 | 2 | 12:48 | 01:19 | 2-3 | -1 | 1 | 0 | 0 | 1 | 0.6944 |
| 1- Foster C/ 2- Flagg C/ 5- Proctor T/ 6- Brown M/ 7- Knueppel K/ | 2 | 12:48 | 2 | 11:18 | 01:30 | 0-2 | -2 | 5 | 0 | 0 | 0 | 0.0000 |
| 2- Flagg C/ 5- Proctor T/ 7- Knueppel K/ 9- Maluach K/ 18- Gillis M/ | 2 | 11:18 | 2 | 09:10 | 02:08 | 5-3 | 2 | 4 | 0 | 0 | 1 | 1.6667 |
| 2- Flagg C/ 5- Proctor T/ 6- Brown M/ 7- Knueppel K/ 18- Gillis M/ | 2 | 09:10 | 2 | 06:31 | 02:39 | 2-6 | -4 | 2 | 1 | 1 | 0 | 0.4000 |
| 1- Foster C/ 2- Flagg C/ 5- Proctor T/ 6- Brown M/ 7- Knueppel K/ | 2 | 06:31 | 2 | 04:18 | 02:13 | 3-3 | 0 | 3 | 0 | 0 | 0 | 0.6303 |
| 1- Foster C/ 2- Flagg C/ 5- Proctor T/ 7- Knueppel K/ 18- Gillis M/ | 2 | 04:18 | 2 | 03:57 | 00:21 | 1-2 | -1 | 0 | 0 | 0 | 0 | 2.2727 |
| 1- Foster C/ 2- Flagg C/ 5- Proctor T/ 7- Knueppel K/ 9- Maluach K/ | 2 | 03:57 | 2 | 01:41 | 02:16 | 3-6 | -3 | 1 | 0 | 2 | 0 | 0.6757 |
| 1- Foster C/ 2- Flagg C/ 5- Proctor T/ 6- Brown M/ 7- Knueppel K/ | 2 | 01:41 | 2 | 00:00 | 01:41 | 2-5 | -3 | 2 | 1 | 2 | 0 | 0.5814 |



Duke at Kentucky

11/12/24 State Farm Arena, Atlanta
2024-25 Men's Basketball

Game Time: 9:00 PM
Game Duration: 2:20
Attendance: 16,107

Officials: Joe Lindsay, Ron Groover, Courtney Green

Kentucky

| Lineup | Quarter On | Time On | Quarter Off | Time Off | Time on Court | Score | Score Diff | Reb | Stl | Tov | Ass | PPP |
|--|------------|---------|-------------|----------|---------------|-------|------------|-----|-----|-----|-----|--------|
| 00- Oweh O/ 1- Butler L/ 2- Robinson J/ 7- Carr A/ 22- Williams A/ | 1 | 20:00 | 1 | 16:53 | 03:07 | 6-6 | 0 | 3 | 0 | 1 | 2 | 1.0204 |
| 00- Oweh O/ 1- Butler L/ 2- Robinson J/ 7- Carr A/ 10- Garrison B/ | 1 | 16:53 | 1 | 15:40 | 01:13 | 3-5 | -2 | 0 | 0 | 1 | 1 | 1.5000 |
| 1- Butler L/ 2- Robinson J/ 4- Brea K/ 7- Carr A/ 10- Garrison B/ | 1 | 15:40 | 1 | 14:59 | 00:41 | 3-2 | 1 | 1 | 0 | 0 | 1 | 3.0000 |
| 2- Robinson J/ 4- Brea K/ 7- Carr A/ 10- Garrison B/ 77- Kriisa K/ | 1 | 14:59 | 1 | 14:31 | 00:28 | 3-0 | 3 | 1 | 0 | 0 | 1 | 3.0000 |
| 2- Robinson J/ 4- Brea K/ 10- Garrison B/ 15- Almonor A/ 77- Kriisa K/ | 1 | 14:31 | 1 | 13:51 | 00:40 | 4-0 | 4 | 1 | 0 | 0 | 1 | 2.1277 |
| 2- Robinson J/ 4- Brea K/ 15- Almonor A/ 22- Williams A/ 77- Kriisa K/ | 1 | 13:51 | 1 | 13:39 | 00:12 | 0-1 | -1 | 0 | 0 | 0 | 0 | 0.0000 |
| 4- Brea K/ 5- Chandler C/ 15- Almonor A/ 22- Williams A/ 77- Kriisa K/ | 1 | 13:39 | 1 | 11:24 | 02:15 | 2-5 | -3 | 1 | 0 | 0 | 1 | 0.5000 |
| 00- Oweh O/ 1- Butler L/ 4- Brea K/ 15- Almonor A/ 22- Williams A/ | 1 | 11:24 | 1 | 09:55 | 01:29 | 2-2 | 0 | 3 | 0 | 0 | 0 | 0.6667 |
| 00- Oweh O/ 1- Butler L/ 2- Robinson J/ 7- Carr A/ 22- Williams A/ | 1 | 09:55 | 1 | 09:37 | 00:18 | 1-0 | 1 | 0 | 0 | 0 | 0 | 2.2727 |
| 1- Butler L/ 2- Robinson J/ 7- Carr A/ 22- Williams A/ 77- Kriisa K/ | 1 | 09:37 | 1 | 09:27 | 00:10 | 0-0 | 0 | 1 | 0 | 0 | 0 | 0.0000 |
| 1- Butler L/ 2- Robinson J/ 7- Carr A/ 10- Garrison B/ 77- Kriisa K/ | 1 | 09:27 | 1 | 09:12 | 00:15 | 0-0 | 0 | 0 | 0 | 0 | 0 | 0.0000 |
| 1- Butler L/ 2- Robinson J/ 10- Garrison B/ 15- Almonor A/ 77- Kriisa K/ | 1 | 09:12 | 1 | 08:23 | 00:49 | 0-4 | -4 | 1 | 0 | 1 | 0 | 0.0000 |
| 00- Oweh O/ 2- Robinson J/ 10- Garrison B/ 15- Almonor A/ 77- Kriisa K/ | 1 | 08:23 | 1 | 07:32 | 00:51 | 0-3 | -3 | 1 | 0 | 1 | 0 | 0.0000 |
| 00- Oweh O/ 2- Robinson J/ 7- Carr A/ 22- Williams A/ 77- Kriisa K/ | 1 | 07:32 | 1 | 05:29 | 02:03 | 2-2 | 0 | 5 | 0 | 1 | 0 | 0.5000 |
| 00- Oweh O/ 1- Butler L/ 4- Brea K/ 7- Carr A/ 10- Garrison B/ | 1 | 05:29 | 1 | 02:28 | 03:01 | 7-12 | -5 | 1 | 0 | 1 | 1 | 1.4344 |
| 2- Robinson J/ 4- Brea K/ 7- Carr A/ 22- Williams A/ 77- Kriisa K/ | 1 | 02:28 | 1 | 00:46 | 01:41 | 4-4 | 0 | 1 | 0 | 0 | 0 | 1.2500 |
| 2- Robinson J/ 4- Brea K/ 15- Almonor A/ 22- Williams A/ 77- Kriisa K/ | 1 | 00:46 | 2 | 20:00 | 00:46 | 0-0 | 0 | 1 | 0 | 1 | 0 | 0.0000 |
| 00- Oweh O/ 1- Butler L/ 2- Robinson J/ 7- Carr A/ 22- Williams A/ | 2 | 20:00 | 2 | 17:48 | 02:12 | 5-0 | 5 | 4 | 1 | 0 | 1 | 1.6667 |
| 00- Oweh O/ 2- Robinson J/ 7- Carr A/ 22- Williams A/ 77- Kriisa K/ | 2 | 17:48 | 2 | 16:41 | 01:07 | 3-4 | -1 | 0 | 0 | 0 | 1 | 2.0833 |
| 00- Oweh O/ 2- Robinson J/ 7- Carr A/ 10- Garrison B/ 77- Kriisa K/ | 2 | 16:41 | 2 | 14:07 | 02:34 | 2-4 | -2 | 2 | 0 | 1 | 1 | 0.4505 |
| 1- Butler L/ 2- Robinson J/ 4- Brea K/ 10- Garrison B/ 15- Almonor A/ | 2 | 14:07 | 2 | 13:18 | 00:49 | 0-2 | -2 | 1 | 0 | 1 | 0 | 0.0000 |
| 1- Butler L/ 2- Robinson J/ 4- Brea K/ 15- Almonor A/ 22- Williams A/ | 2 | 13:18 | 2 | 13:10 | 00:08 | 0-0 | 0 | 0 | 0 | 0 | 0 | 0.0000 |
| 00- Oweh O/ 1- Butler L/ 4- Brea K/ 15- Almonor A/ 22- Williams A/ | 2 | 13:10 | 2 | 11:18 | 01:52 | 5-0 | 5 | 4 | 0 | 0 | 1 | 1.2500 |
| 00- Oweh O/ 1- Butler L/ 4- Brea K/ 7- Carr A/ 22- Williams A/ | 2 | 11:18 | 2 | 09:10 | 02:08 | 3-5 | -2 | 1 | 0 | 0 | 1 | 0.8721 |
| 00- Oweh O/ 1- Butler L/ 4- Brea K/ 7- Carr A/ 10- Garrison B/ | 2 | 09:10 | 2 | 06:31 | 02:39 | 6-2 | 4 | 4 | 1 | 1 | 2 | 1.2000 |
| 00- Oweh O/ 2- Robinson J/ 7- Carr A/ 10- Garrison B/ 77- Kriisa K/ | 2 | 06:31 | 2 | 04:18 | 02:13 | 3-3 | 0 | 3 | 0 | 0 | 0 | 0.7500 |
| 1- Butler L/ 2- Robinson J/ 4- Brea K/ 7- Carr A/ 22- Williams A/ | 2 | 04:18 | 2 | 03:57 | 00:21 | 2-1 | 1 | 0 | 0 | 0 | 1 | 2.0000 |
| 00- Oweh O/ 1- Butler L/ 2- Robinson J/ 4- Brea K/ 7- Carr A/ | 2 | 03:57 | 2 | 01:49 | 02:08 | 5-3 | 2 | 1 | 1 | 0 | 1 | 1.4535 |
| 00- Oweh O/ 1- Butler L/ 2- Robinson J/ 7- Carr A/ 10- Garrison B/ | 2 | 01:49 | 2 | 01:22 | 00:27 | 1-0 | 1 | 0 | 0 | 1 | 0 | 0.6944 |
| 00- Oweh O/ 2- Robinson J/ 7- Carr A/ 10- Garrison B/ 77- Kriisa K/ | 2 | 01:22 | 2 | 00:26 | 00:55 | 0-2 | -2 | 1 | 0 | 0 | 0 | 0.0000 |
| 00- Oweh O/ 1- Butler L/ 2- Robinson J/ 7- Carr A/ 22- Williams A/ | 2 | 00:26 | 2 | 00:05 | 00:21 | 2-0 | 2 | 0 | 1 | 0 | 0 | 2.2727 |
| 00- Oweh O/ 1- Butler L/ 2- Robinson J/ 4- Brea K/ 7- Carr A/ | 2 | 00:05 | 2 | 00:05 | 00:00 | 0-0 | 0 | 0 | 0 | 0 | 0 | 0.0000 |
| 00- Oweh O/ 1- Butler L/ 2- Robinson J/ 7- Carr A/ 22- Williams A/ | 2 | 00:05 | 2 | 00:00 | 00:05 | 3-0 | 3 | 1 | 0 | 0 | 0 | 3.9474 |

