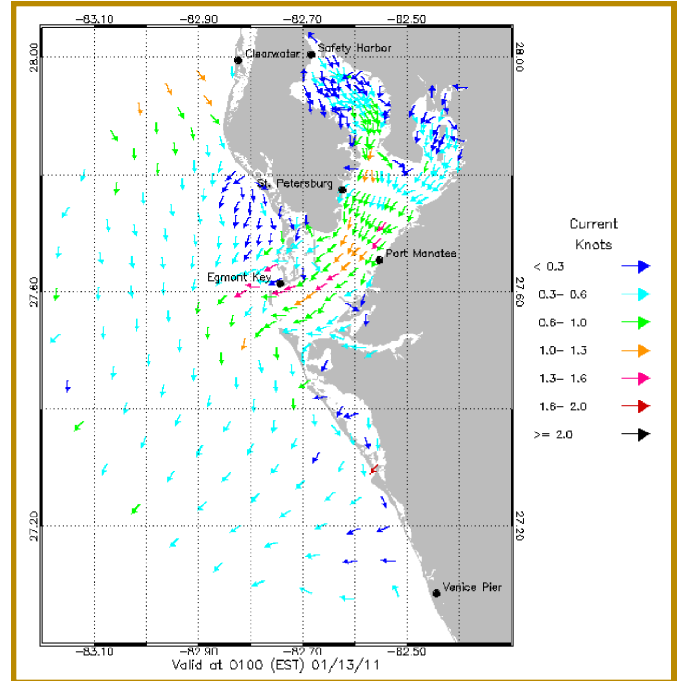


# OPERATIONAL FORECAST SYSTEM

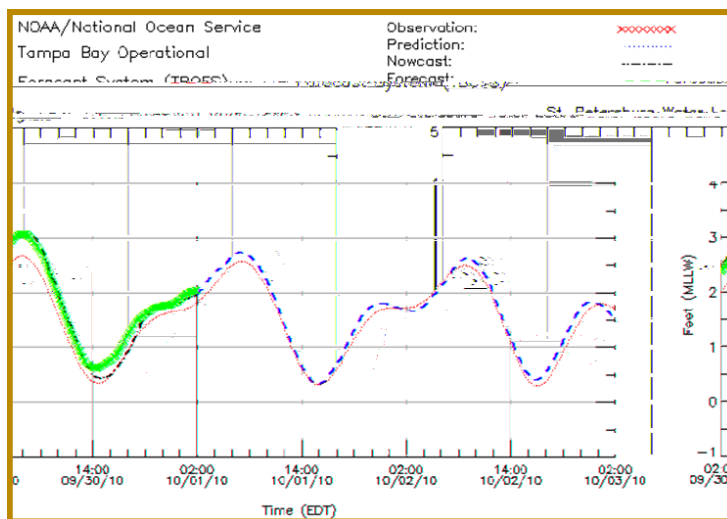
## Water Levels and Currents for Tampa Bay

The Tampa Bay Operational Forecast System (TBOFS) updates the surface wind, water level, current, temperature and salinity nowcast and forecast guidance four times per day (every six hours). The forecasts are provided for 48 hours into the future. Animation maps of Tampa Bay (shown on the right) as well as time series at particular stations or points of interest (shown below) are available for 35 locations for surface winds, water levels, currents, temperature, and salinity.



# TAMPA BAY

<http://tidesandcurrents.noaa.gov/ofs/tbofs/tbofs.html>



TBOFS animation maps and time series graphics are available at <http://tidesandcurrents.noaa.gov/ofs/tbofs/tbofs.html>. The time series plot shown on the left displays observed and predicted water levels as well as the TBOFS water level nowcast and forecast guidance for St. Petersburg, Florida. On calm days these lines will be close together. However, during a storm event, the observed water levels and the TBOFS

nowcast and forecast guidance will be different from the astronomic predictions. During storm events, TBOFS provides valuable information on the changing water levels and currents throughout Tampa Bay.



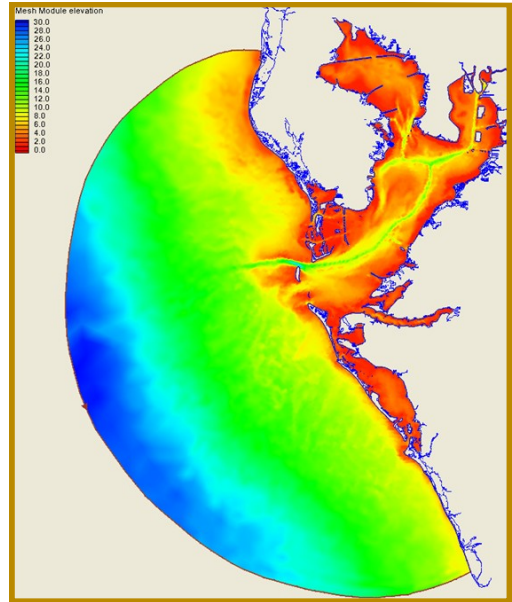
# Tampa Bay Operational Forecast System (TBOFS)

Output from TBOFS can be used for a wide variety of applications such as recreational boating, fishing and sailing, shipment and vessel transect planning, storm effect tracking, hazardous material tracking and search and rescue, to name a few. Any activity where winds, water levels, currents, water temperature and/or salinity are a factor can benefit from the information provided by TBOFS.

To generate the wind, water level, current, temperature and salinity nowcast and forecast guidance, TBOFS relies on real-time and forecast data from the NOAA National Weather Service, real-time observations from CO-OPS and U.S. Geological Survey gauges, and output from the U.S. Navy Coastal Ocean Model.

Historic TBOFS output is available from CO-OPS web services at <http://opendap.co-ops.nos.noaa.gov/thredds/catalog.html>. Additionally, the TBOFS map animations and time series graphics archive of surface wind, water level, current, temperature and salinity is located at <ftp://tidepool.nos.noaa.gov/pub/outgoing/ofs/tbofs/graphics/>.

For decades, mariners in the United States have depended on NOAA's Tide Tables for the best estimate of expected water levels and tidal currents. These tables provide accurate predictions of the astronomical tide and tidal currents (i.e., the change in water level and current due to the gravitational effects of the moon and sun and the rotation of the Earth); however, they cannot predict water level changes and variations in currents due to wind, atmospheric pressure, and river flow, which are often significant. As a result, NOAA's Center for Operational Oceanographic Products and Services (CO-OPS), Office of Coast Survey, and National Centers for Environmental Prediction (NCEP) have developed a Tampa Bay Operational Forecast System (TBOFS). TBOFS serves the Tampa Bay community, including U.S. port authorities and mariners, by providing water level, current, temperature and salinity nowcasts (predictions for locations where there are no observations) and forecast guidance based on nearby real-time observation data, meteorological forecasts and astronomical predictions.



Access the Tampa Bay Operational Forecast System by clicking on the TBOFS icon on the CO-OPS Operational Forecast System web page: <http://tidesandcurrents.noaa.gov/models.html>

NOAA/National Ocean Service  
Center for Operational Oceanographic Products and Services  
1305 East-West Highway, Room 6635  
Silver Spring, Maryland 20910  
301-713-2981  
Email: [Tide.Predictions@noaa.gov](mailto:Tide.Predictions@noaa.gov)

