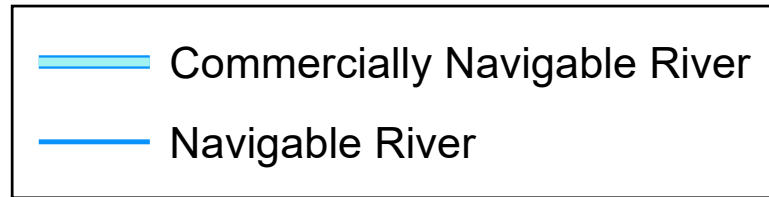


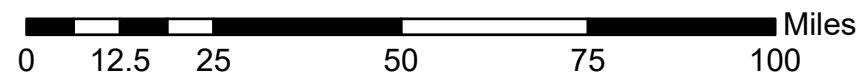
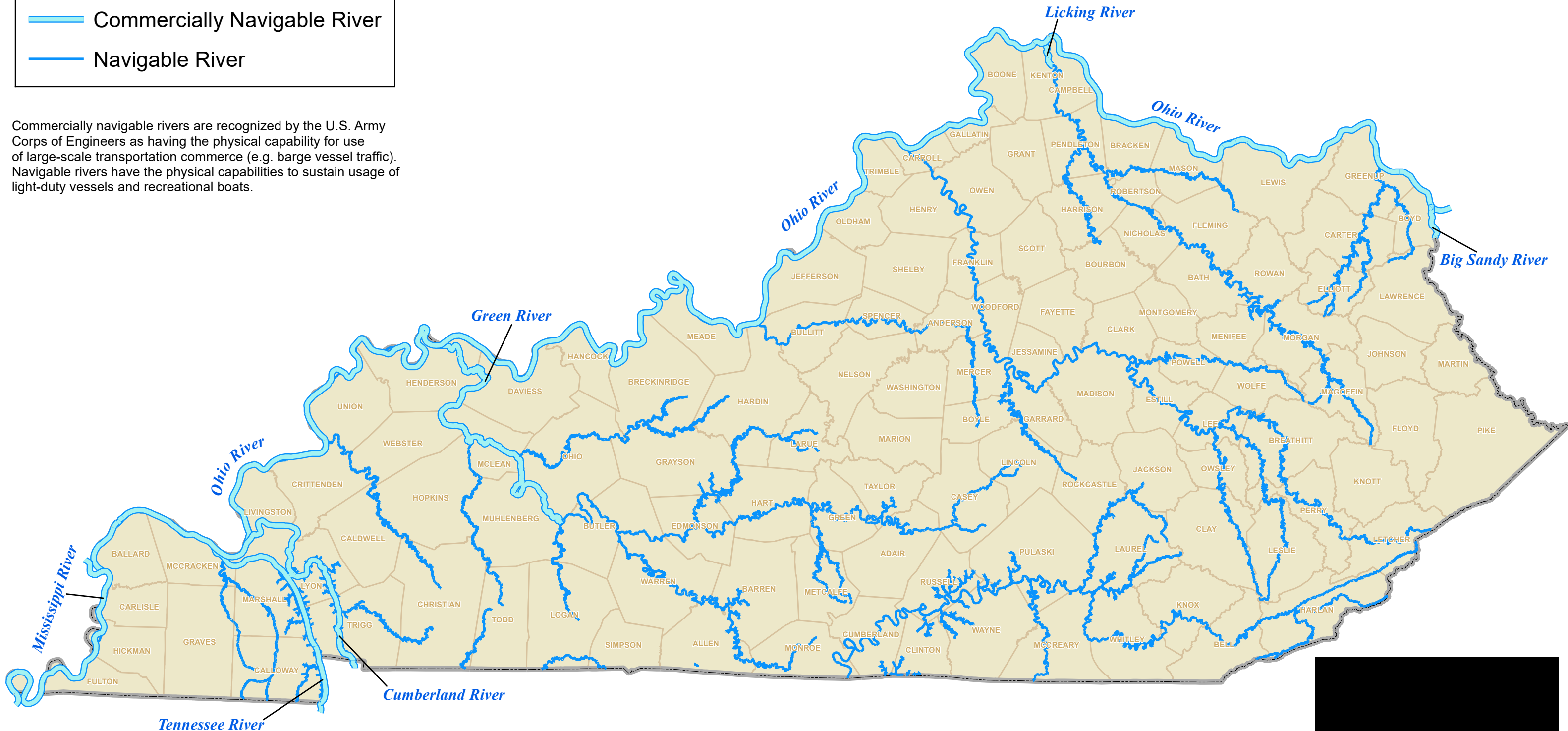
KENTUCKY NAVIGABLE WATERWAYS



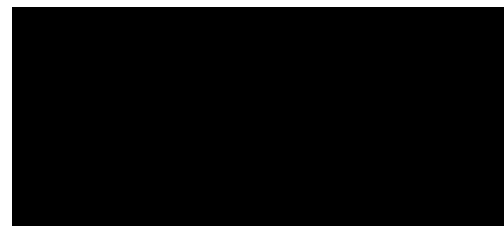
As recognized by the U.S. Army Corps of Engineers



Commercially navigable rivers are recognized by the U.S. Army Corps of Engineers as having the physical capability for use of large-scale transportation commerce (e.g. barge vessel traffic). Navigable rivers have the physical capabilities to sustain usage of light-duty vessels and recreational boats.



Map Updated: 2022



CABINET