



MOLT SEARCH ID GUIDE

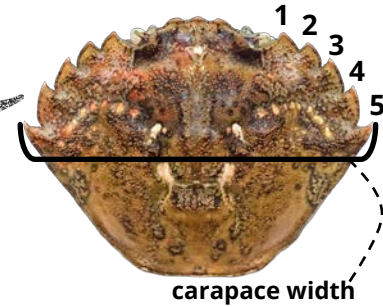
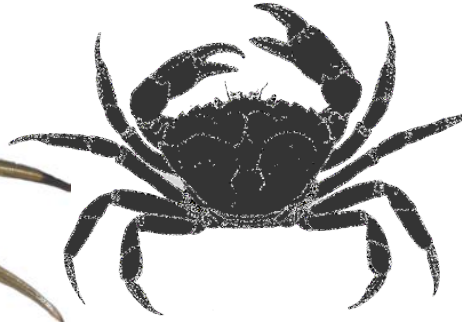


Available at: wsg.washington.edu/moltsearch

EUROPEAN GREEN CRAB *Carcinus maenas*



- **Carapace:** oval to 90mm; 5 prominent marginal teeth, 3 rostral bumps
- **Claws:** not rounded, occasionally with blue tips
- **Walking legs:** last pair slightly flattened



NATIVE CRABS

While not all inclusive, this guide includes the species you may be most likely to encounter as molts

NATIVE SHORE CRABS

Hemigrapsus oregonensis, *Hemigrapsus nudus*

- **Carapace:** square to 60mm; 3 marginal teeth, 2 rostral bumps
- **Claws:** rounded, often w/ fleshy tufts, *H. nudus* with polka dots
- **Walking legs:** *H. oregonensis* with fine sparse hairs



HAIRY HELMET CRAB

Telmessus cheiragonus

- **Carapace:** diamond to 100mm; 6 prominent marginal teeth widest at the 5th; hairy
- **Claws:** small, similar to walking legs; hairy
- **Walking legs:** long and hairy



SPIDER CRABS

Multiple species of the family Majidae: (e.g., *Pugettia producta*, *P. gracilis*, *Scyra acutifrons*)

- **Carapace:** longer front-back than wide; rostrum protrudes far beyond eyes
- **Claws:** long and thin
- **Walking legs:** long with sharp tips



PEA CRAB

Multiple species of the family Pinnotheridae

- **Carapace:** to 11mm; oblong oval; smooth with no marginal teeth; no rostrum
- **Claws:** small and indistinct



BLACK-CLAWED CRAB

Lophopanopeus bellus

- **Carapace:** to 40mm; pentagonal with 3 indistinct marginal teeth
- **Claws:** Large, black-tipped claws
- **Walking legs:** Hairs on walking legs

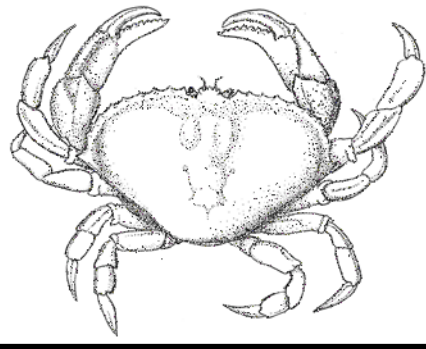


MOLT SEARCH ID GUIDE

DUNGENESS CRAB

Cancer (Metacarcinus) magister

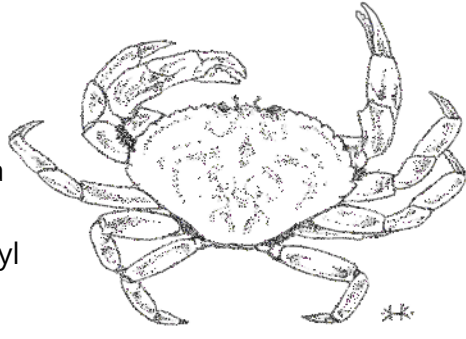
- **Carapace:** oval to 230mm; 10 marginal teeth and widest at pronounced 10th tooth
- **Claws:** serrations on upper edge of dactyl
- **Walking legs:** long light-colored with hairs



GRACEFUL CRAB

Cancer (Metacarcinus) gracilis

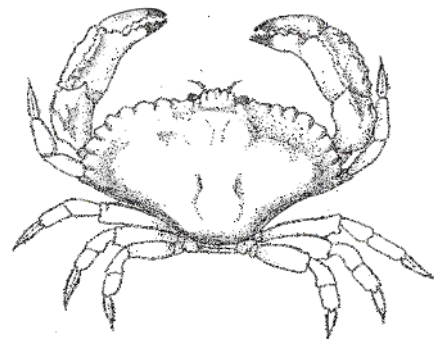
- **Carapace:** as MEMA but to 115mm and widest at 9th tooth. 10th tooth appears as a notch behind widest point.
- **Claws:** no serrations on upper edge of dactyl
- **Walking legs:** long purplish hairless



RED ROCK CRAB

Cancer productus

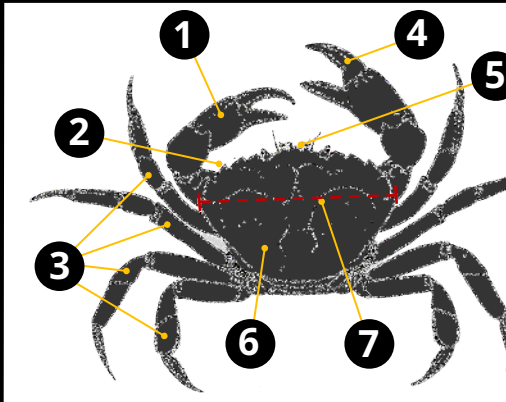
- **Carapace:** fan to 200mm; 10 rounded, blunt marginal teeth, 5 bumps on protruding rostrum
- **Claws:** large, muscular, with black tips
- **Walking legs:** small and thin



PYGMY ROCK CRAB

Cancer (Glebocarcinus) oregonensis

- **Carapace:** circular to 53mm; 10 distinct but petite marginal teeth, widest at 7th or 8th
- **Claws:** very large and rounded with black tips
- **Walking legs:** hairy



Crab Anatomy

1. Claw/Cheliped
2. Marginal teeth/lateral spines
3. Walking legs
4. Dactyl
5. Rostrum
6. Carapace
7. Carapace width

CRABDOMEN GUIDE

♀ Female ♂ Male

Individual abdomens can vary in shape and color, but this guide covers the typical shape associated with each sex.

EUROPEAN GREEN CRAB

Carcinus maenas

DUNGENESS CRAB

Cancer (Metacarcinus) magister



♂



♂