



Established by Congress 1923

American Battle Monuments Commission Fiscal Year 2024 Appropriation Request

Submitted to the
118th Congress of the United States, First Session

Senate Committee on Appropriations
Subcommittee on Military Construction, Veterans Affairs, and Related Agencies
and
House Committee on Appropriations
Subcommittee on Military Construction, Veterans Affairs, and Related Agencies

TABLE OF CONTENTS

EXECUTIVE SUMMARY 1
 Total Budget Authority 1
 Funding Request Summary 1

PART 1: INTRODUCTION 2
 Mission 2
 Vision 2
 Values 2
 Who We Serve 2
 History and Background 3
 Organization 6
 Operations 7

PART 2: FY 2024 BUDGET REQUEST 10
 Overview 10
 Proposed Appropriations Language 11
 Salaries and Expenses - \$158,630,000 12
 FY 2024 Budget Justification 13
 Adjustments from the FY 2023 Budget 16
 Maintenance and Infrastructure Program 18
 Official Reception and Representation Expenses 19
 Statement of Increases and Decreases by Object Classification 20
 Foreign Currency Fluctuations Account 22

PART 3: Maintenance and Infrastructure Program FY 2024 – 2030 23

EXECUTIVE SUMMARY

Total Budget Authority

The American Battle Monuments Commission (ABMC) budget for Fiscal Year (FY) 2024 requests total budget authority of \$158,630,000 and a 528 Full-Time Equivalent (FTE) employment level. The budget authority requested for the Salaries and Expenses account is an increase of \$71,100,000 from the amount appropriated for FY 2023. This request funds three one-time critical projects totalling \$44,000,000:

- \$19 million to complete the design and construction of the Honolulu Interpretive Center
- \$10 million for the stabilization of sinkholes at the Suresnes American Cemetery
- \$15 million for the execution and construction of the Pointe du Hoc master plan

This request will also fund an increase of 63 FTE.

The Foreign Currency Fluctuations Account (FCFA) request is \$0. Due to the current rates of exchange, the budget rate used by ABMC, and unobligated balances in the FCFA, ABMC is not requesting new funding in FY 2024.

This request is outlined below and further discussed in detail in Part 2.

Funding Request Summary

(\$ in millions)

| | FY 2022 Appropriation | FY 2023 Appropriation | FY 2024 Request | Change |
|-------------------------------|--------------------------|--------------------------|--------------------|-------------|
| Salaries & Expenses | 87.5 | 87.5 | 158.63 | 71.1 |
| Foreign Currency | 0.0 | 0.0 | 0.0 | 0.0 |
| TOTAL Budget Authority | 87.5 | 87.5 | 158.63 | 71.1 |
| | | | | |
| FTE | 447 | 465 | 528 | 63 |

PART 1: INTRODUCTION

Mission

The American Battle Monuments Commission, the preeminent guardian of America's commemorative military cemeteries and memorials worldwide, honors the achievements of the U.S. armed forces by preserving their legacy of service and by seeking new and innovative ways of reflecting the evolving nature of sacrifice.

Vision

ABMC is the premier agency for commemorating and venerating American military service, sacrifice, and achievements, fulfilling the promise of General of the Armies John J. Pershing that *"Time will not dim the glory of their deeds."*

Values

Honor – Respect – Excellence – Stewardship – Commitment

Who We Serve

Since ABMC's founding in 1923, the success of our mission has depended on the engagement of our stakeholders. Over time, our approach to accomplishing our mission has evolved to meet the changing needs of these various individuals. This section outlines the major groups that we have traditionally served and the types of activities we have provided.

- Veterans, Family, and Friends Honored for Their Service or Their Loss – We honor the veterans, family members, and friends of United States military who have served our country or endured the loss of a loved one who served. This group has the closest ties to our sites, and we strive to provide them with the most positive experience possible. For immediate family members who want to visit a family member's burial or memorialization site, we provide letters authorizing fee-free passports for traveling overseas to visit the memorial site. We also provide, at no charge, headstone photographs to relatives of those interred or memorialized in our cemeteries and monuments. In addition, we offer a variety of other services, including information on an individual buried or honored, and escort services for family members visiting grave and memorial sites within the cemetery.
- Military and Public Officials – We host a variety of special events and commemorations throughout the year, including Memorial Day and Veterans Day holidays, to honor the freedom preserved and restored and the lives lost. Host country and U.S. government officials, diplomats, and military representatives attend these events with the public. In addition, military units hold ceremonies to honor their fallen comrades, and foreign organizations pay tribute to those who died liberating their regions.

- Guests and Visitors – We receive millions of American and foreign visitors of all generations at ABMC cemeteries and memorials. They learn and are inspired by the stewardship of the memorials and the stories of our armed forces at our visitor centers and contact stations. We provide a variety of services to these visitors, including direction, advice on modes of transportation, and information on local accommodations.
- ABMC Partners – We support and provide information to our partners that help us further our mission, including other government agencies, historians and educators, the travel and tourism industry, and the media. Through these partnerships, we promote our mission, encourage visits to our commemorative sites, and help educate and inspire the public.

History and Background

Recognizing the need for a federal agency to be responsible for honoring the fallen members of American armed forces where they had served abroad and for controlling the construction of military monuments and markers on foreign soil, the Congress enacted legislation in 1923 creating the American Battle Monuments Commission.

The Commission is an independent agency of the Executive Branch of the United States (U.S.) federal government. It is responsible for commemorating the service, achievements, and sacrifice of American armed forces in the U.S. and where they have served overseas since April 6, 1917 (the date of U.S. entry into World War I), through the erection of suitable memorial shrines; for designing, constructing, operating, and maintaining permanent American military burial grounds in foreign countries; for controlling the design and construction of U.S. military monuments and markers in foreign countries by other U.S. citizens and organizations, both public and private; and for encouraging the maintenance of such monuments and markers by their sponsors. In performing these functions, the Commission administers, operates and maintains twenty-six permanent American military burial grounds and thirty-two separate memorials, monuments and markers, of which four are located in the United States.

As reported in the FY 2021 Annual Report, nearly 208,000 U.S. war dead from World War I and World War II are buried or memorialized on Walls of the Missing at ABMC sites. Additionally, more than 8,200 war dead listed as missing from the Korean War and 2,500 from the Vietnam War are memorialized at ABMC's Honolulu Memorial. ABMC also administers three cemeteries not associated with the world wars: Mexico City National Cemetery, Corozal American Cemetery in Panama, and Clark Veterans Cemetery in the Philippines. More than 15,000 members of the armed forces, veterans, and others are interred in these sites.

Each grave site in the permanent American World War I and World War II cemeteries on foreign soil is marked by a headstone of pristine white marble. Annotated on the headstones of the World War I war dead who could not be identified is the phrase, "HERE RESTS IN HONORED GLORY AN AMERICAN SOLDIER KNOWN BUT TO GOD." In the World War II cemeteries, the words "AMERICAN SOLDIER" were replaced with the words "COMRADE IN ARMS."

**American Battle Monuments Commission
Cemeteries**

Belgium

Ardennes American Cemetery
Flanders Field American Cemetery
Henri-Chapelle American Cemetery

France

Aisne-Marne American Cemetery
Brittany American Cemetery
Epinal American Cemetery
Lafayette Escadrille Memorial Cemetery
Lorraine American Cemetery
Meuse-Argonne American Cemetery
Normandy American Cemetery
Oise-Aisne American Cemetery
Rhone American Cemetery
Saint-Mihiel American Cemetery
Somme American Cemetery
Suresnes American Cemetery

Italy

Florence American Cemetery
Sicily-Rome American Cemetery

Luxembourg

Luxembourg American Cemetery

Mexico

Mexico City National Cemetery

the Netherlands

Netherlands American Cemetery

Panama

Corozal American Cemetery

the Philippines

Clark Veterans Cemetery
Manila American Cemetery

Tunisia

North Africa American Cemetery

United Kingdom

Brookwood American Cemetery
Cambridge American Cemetery

The Commission's World War I, World War II, and Mexico City cemeteries are closed to future burials except for the remains of U.S. war dead found from time to time in the World War I and World War II battle areas. The Corozal American Cemetery outside Panama City, Panama, and the Clark Veterans Cemetery in the Philippines are the only active cemeteries the Commission maintains.

Since the 2007 opening of the Normandy American Cemetery Visitor Center in France, the Commission has continued to develop programs to preserve the stories of the men and women commemorated at its sites, by providing historical context to visitors now far removed from the war years and by using digital communication platforms and educational products to bring those stories home to the people of the United States, preserving for future generations this legacy of service and sacrifice. The Commission expects to open its 10th visitor center in 2023, at Netherlands American Cemetery.

**American Battle Monuments Commission
Memorials, Monuments and Markers**

Belgium

Audenarde Monument
Kemmel Monument
Battle of the Bulge Memorial

Cuba

Santiago Surrender Tree

France

Belleau Wood Marine Monument
Bellicourt Monument
Cantigny Monument
Chateau-Thierry Monument
Chaumont Marker - AEF Headquarters
Montfaucon Monument
Montsec Monument
Naval Monument at Brest
Pointe du Hoc Ranger Monument
Sommepey Monument
Souilly Marker-1st Army Headquarters
Tours Monument
Utah Beach Memorial

Midway Atoll

Midway Monument

Morocco

Western Naval Task Force Marker

New Guinea

Marker at Papua New Guinea

New Zealand

New Zealand Memorial

Northern Mariana Islands

Saipan Memorial

the Philippines

Cabanatuan Memorial

South Korea

Korean War Monument at Busan

Solomon Islands

Guadalcanal Memorial

United Kingdom

Dartmouth Monument
Naval Monument at Gibraltar
XI Amphibious Force Marker

United States of America

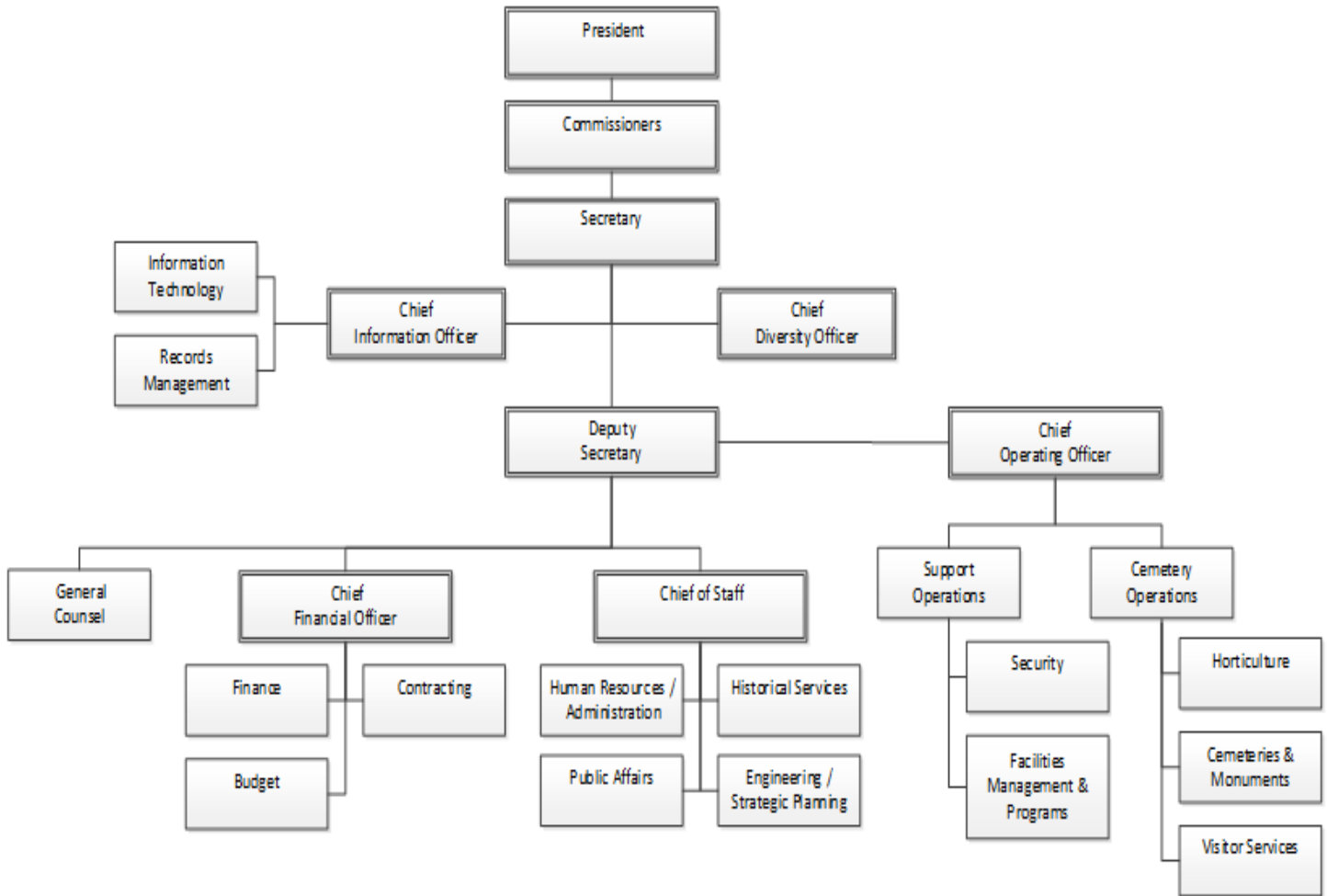
East Coast Memorial
Honolulu Memorial
National World War I Memorial
West Coast Memorial

Organization

The Board of Commissioners constitutes the policy-making body of the Commission. The President of the United States appoints up to eleven members, who serve for an indefinite term without pay. They meet with the Secretary and professional staff of the Commission at least twice annually.

| |
|--|
| <p style="text-align: center;"><u>Commission</u></p> <p style="text-align: center;">Mark P. Hertling – Chairman Darrell L. Dorgan John L. Estrada Florent Groberg Amy Looney Heffernan Matthew E. Jones Raymond D. Kemp Bud D. Pettigrew Michael E. Smith Gail Berry West Daniel P. Woodward</p> <p style="text-align: center;">Charles K. Djou – Secretary</p> |
|--|

The Commission's daily operations are directed by an Executive Level Secretary appointed by the President. For FY 2024, the Commission will be staffed by 528 FTE consisting of U.S. General Schedule and Foreign Service National civilian employees. The agency headquarters is located in Arlington, Virginia, and a field operations office responsible for all overseas cemeteries and memorials is located in Paris, France. The following chart outlines the Commission's organizational structure:

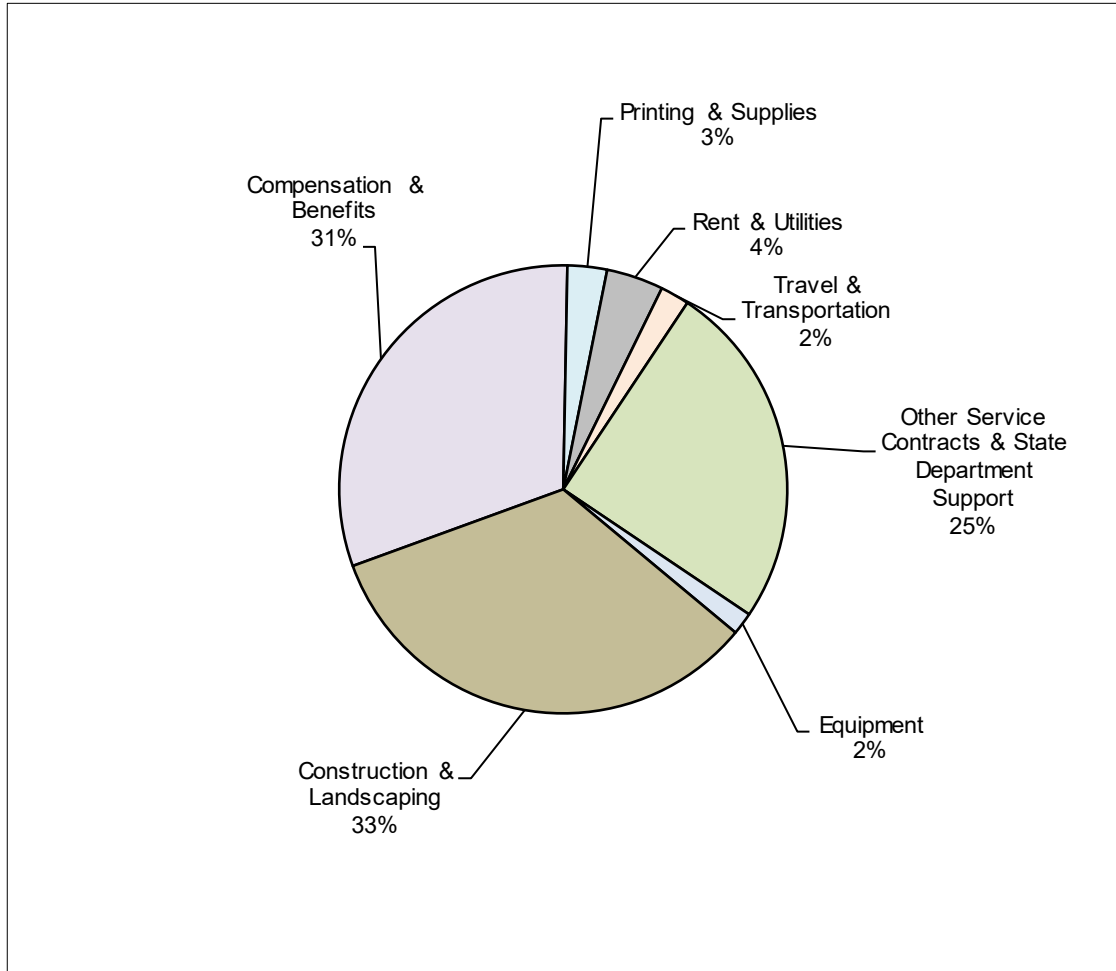


Operations

The Commission's FY 2024 funding request focuses on providing the appropriate amount of funding for personnel costs, service fees, scheduled maintenance and repairs, supplies, spare parts, replacement equipment, and capital improvements enabling the Commission to perform its mission.

Providing the care, maintenance, and visitor services inherent to these sites requires exceptionally intensive labor at the Commission's cemeteries and memorials. Accordingly, compensation and benefits consume 31 percent of the Commission's FY 2024 request while the remaining 69 percent supports facilities maintenance, logistics, services, supplies and other administrative costs critical to ABMC operations.

Fiscal Year 2024 Funding Plan



Most of the Commission's facilities are at least half a century old, with the Mexico City National Cemetery being 172 years old. The permanent structures, grounds and plantings make the Commission's facilities among the most beautiful memorials in the world, yet their age requires increased funding levels to maintain them. These shrines to America's war dead require a formidable annual program of maintenance and repair of facilities, equipment, and grounds.

The Commission prioritizes the use of its engineering, maintenance and horticulture funds carefully to ensure the most effective and efficient utilization of its available resources. This care includes the upkeep of graves and headstones, memorial structures within and external to the cemeteries, visitor facilities, quarters for assigned personnel, roads and paths, and ornamental landscaping and fine lawns, all on approximately 1,700 acres of land. All of these facilities, landscapes, and structures are maintained to a standard commensurate to the service and sacrifice these commemorative sites honor.

Responding to events around the world, the Commission emphasizes security throughout the agency, enhancing ABMC's management review, allocating project funding within the Commission's Maintenance and Infrastructure Programs. Nothing is more important than safeguarding ABMC personnel on and off duty, our visitors, and our historic infrastructure. Consistent with U.S. State Department guidance, ABMC will continue to use prior year funding provided in FY 2016 to develop and implement security projects that provide for the health and safety of our staff and visitors, as well as overall facility security.

ABMC also administers trust funds to (1) build memorials authorized by Congress, but financed primarily from private contributions, commemorative coin proceeds, or investment earnings and (2) maintain and repair nonfederal war memorials with private contributions.

PART 2: FY 2024 BUDGET REQUEST

Overview

The American Battle Monuments Commission budget for FY 2024 requests total budget authority of \$158,630,000 and a 528 FTE employment level. The budget authority requested for the Salaries and Expenses account is an increase of \$71,100,000 from the amount appropriated for FY 2023. This request funds three one-time critical projects totalling \$44,000,000:

- \$19 million to complete the design and construction of the Honolulu Interpretive Center
- \$10 million for the stabilization of sinkholes at the Suresnes American Cemetery
- \$15 million for the execution and construction of the Pointe du Hoc master plan

This request will also fund an increase of 63 FTE.

The Foreign Currency Fluctuations Account request is \$0. Due to the current rates of exchange, the budget rate used by ABMC, and unobligated balances in the FCFA, ABMC is not requesting new funding in FY 2024.

Funding Request Summary

(\$ in millions)

| | FY 2022 Appropriation | FY 2023 Appropriation | FY 2024 Request | Change |
|-------------------------------|--------------------------|--------------------------|--------------------|-------------|
| Salaries & Expenses | 87.5 | 87.5 | 158.63 | 71.1 |
| Foreign Currency | 0.0 | 0.0 | 0.0 | 0.0 |
| TOTAL Budget Authority | 87.5 | 87.5 | 158.63 | 71.1 |
| FTE | 447 | 465 | 528 | 63 |

Proposed Appropriations Language

Federal Funds:

Salaries and Expenses Treasury Account ID: 74-0100-0

For necessary expenses, not otherwise provided for, of the American Battle Monuments Commission, including the acquisition of land or interest in land in foreign countries; purchases and repair of uniforms for caretakers of national cemeteries and monuments outside of the United States and its territories and possessions; rent of office and garage space in foreign countries; purchase (one-for-one replacement basis only) and hire of passenger motor vehicles; not to exceed \$15,000 for official reception and representation expenses; and insurance of official motor vehicles in foreign countries, when required by law of such countries, [~~\$87,500,000~~] *\$158,630,000*, to remain available until expended.

Foreign Currency Fluctuations Account Treasury Account ID: 74-0101-0

For necessary expenses, not otherwise provided for, of the American Battle Monuments Commission, such sums as may be necessary, to remain available until expended, for purposes authorized by section 2109 of title 36, United States Code.

Salaries and Expenses - \$158,630,000

FY 2024 Budget Request

(\$ in thousands)

| Object Class | FY 2022 Appropriation | FY 2023 Appropriation | FY 2024 Request |
|------------------------------------|----------------------------------|----------------------------------|----------------------------|
| Personnel Compensation | 26,327 | 27,760 | 31,912 |
| Personnel Benefits | 13,883 | 14,766 | 16,601 |
| Benefits for Former Personnel | 400 | 400 | 425 |
| Travel & Transportation of Persons | 1,297 | 1,898 | 2,348 |
| Transportation of Things | 828 | 958 | 964 |
| Rent/Communications/Utilities | 6,325 | 6,408 | 6,521 |
| Printing | 260 | 208 | 203 |
| Other Services | 28,812 | 28,985 | 39,781 |
| Supplies & Materials | 4,267 | 4,091 | 4,323 |
| Equipment | 2,241 | 1,746 | 2,567 |
| Land & Structures | 2,860 | 280 | 52,985 |
| TOTAL | 87,500 | 87,500 | 158,630 |

Maintenance and Infrastructure Program

| | | | |
|--|--------------|--------------|---------------|
| Facilities Management | 1,200 | 800 | 19,295 |
| Interpretation | 1,635 | 650 | 37,226 |
| <i>Education and Outreach</i> | 450 | 300 | 375 |
| <i>Historical Services</i> | - | - | 136 |
| <i>Public Affairs</i> | 425 | - | 1,565 |
| <i>Visitor Services and Interpretation</i> | 760 | 350 | 35,150 |
| Horticulture | 2,200 | - | 1,595 |
| Security | 250 | - | - |
| Information Technology | 2,027 | 400 | 3,066 |
| Cybersecurity | - | - | 500 |
| TOTAL | 7,312 | 1,850 | 61,682 |

FY 2024 Budget and FTE Justification

The Commission's FY 2024 budget request of \$158,630,000 will be directed to the Maintenance and Infrastructure Program and the seven-year project list. There are three large dollar, one-time requirements:

- \$19 million to complete the design and construction of the Honolulu Interpretive Center
- \$10 million for the stabilization of sinkholes at the Suresnes American Cemetery
- \$15 million for the execution and construction of the Pointe du Hoc master plan

Design and Construction of Honolulu Interpretive Center

In 2011, ABMC began discussions with the National Cemetery Administration (NCA) to build an interpretive center within the National Memorial Cemetery of the Pacific (the Punchbowl). ABMC developed a design concept and began development of a Memorandum of Agreement with NCA to govern the operation of the interpretive center. The design concept was completed in 2015; however, the project was placed on hold when the Commission had to commit more than \$10.0M to replace stained Trani Limestone in the Honolulu Memorial's World War II and Korean War Courts of the Missing. An addition of \$28.9M to ABMC's FY 2019 appropriation allowed the Commission to commit \$20.4M for the construction of the interpretive center and its exhibits. ABMC re-initiated contact with NCA staff, who informed the Commission that NCA no longer supported a site within the cemetery. Site selection negotiations resulted in a hillside site just outside the inner gate entrance to the cemetery. Engineering studies and input from stakeholder groups resulted in having to design the interpretive center as a mostly underground facility, burrowing into the side of the crater. Subsequently, the NCA changed its position on building within the cemetery, allowing ABMC to place the interpretive center inside the crater, just behind the Commission's Honolulu Memorial, requiring a restart of the design process. Concurrently, the estimated cost of infrastructure improvements needed for the memorial itself has grown from an initial estimate of \$4.9M to \$10.0M. Those infrastructure improvements were included in the \$20.4M set aside, so the overall project impact is significant. The increased infrastructure costs, the multiple changes in the design process, and escalating construction costs in Honolulu combine to create an estimated \$19 million shortfall in funding to complete this project. We expect to complete design work and break ground on construction in FY 2024.

Suresnes Sinkhole Stabilization

The Suresnes American Cemetery is a World War I cemetery in the suburbs of Paris, about 10 kilometers west of downtown. It sits on a beautiful hillside overlooking Paris. The challenge is that it is built on top of a 14th Century limestone quarry or limestone cavern, and over the past couple of decades the site has experienced sinkholes, which have become more frequent and are becoming larger. The most recent large sinkhole was in December 2019, which is when the agency discovered that the cemetery was built on top of a Middle Ages limestone quarry. Phase 1 remediation involves stabilizing the subsoil in two locations in the plot area; work is currently underway and expected to last until March 2023. Phase

2 will be a complete cemetery underground analysis through 150 borings, up to 100 feet deep, from January 2023 to August 2023. The agency's concern is not only preservation of this beautiful cemetery and the integrity of its graves, but safety, for a green team member on a tractor, or a family walking through the plot area, or the risk of the hillside sliding after a heavy rain. The \$10 million request for this project will fund anticipated Phase 3 remediation throughout the cemetery grounds.

Pointe du Hoc Master Plan

The Pointe du Hoc Ranger Monument site, eight miles west of Normandy American Cemetery, has remained relatively unchanged since 1944; large bomb craters and uneven ground fill the landscape. The site experiences high visitation, an average of 2,000 people per day. Pointe du Hoc is a cultural landscape with significant archaeological and historical features. The cultural landscape at Pointe du Hoc Ranger Monument is being compromised due to social trails created when visitors wander off the defined paths, causing erosion of the historic bomb craters. Safety and accessibility concerns are also important considerations, and ABMC has received a recommendation from local authorities to increase the setback for trails that are proximal to the cliff face. ABMC is completing a master plan to address these and other issues at the site, including vehicular traffic patterns, which are adversely impacted by a cumbersome traffic flow and awkward parking arrangements. This \$15 million request will fund construction, fabrication and production costs to execute the Pointe du Hoc Master Plan. Without this funding, the site will continue to be degraded, further jeopardizing the historic landscape and visitor safety. We currently anticipate construction ground breaking to start in the summer of 2024.

Maintenance and Infrastructure Program

ABMC is also feeling the effects of inflation, rising costs associated with climate change, supply chain disruptions and increasing fixed and recurring costs. With the growing costs of raw materials, utilities, supplies and fertilizer, it is becoming increasingly difficult for the Commission to maintain its cemeteries, monuments and visitor centers to the high standard appropriate to honor the sacrifice of fallen members of America's armed forces and to the level that is expected by the Administration and the American people.

The pristine nature of the Commission's sites is made possible by the funding of horticulture features and water resources. The funding also provides for the routine maintenance of equipment and facilities to ward off future replacement expenses. These line items increase annually, and ABMC experiences unique requirements in maintaining cemeteries and memorials in seventeen countries.

For example, during 2022, Europe experienced one of the worst heat waves and severe drought conditions in recent history. This led to countries implementing water usage restrictions near many of our cemetery and memorial sites. These environmental conditions were also responsible for new plant pests and diseases that have had a noticeable effect on the agency's ability to maintain its "like new" standard. ABMC may soon reach a point of not being able to "keep the grass green" at some of our cemeteries. ABMC is continuously evaluating cemetery supplies of irrigation water and the status of irrigation systems. The Commission's supply and pumping infrastructure and water storage facilities are vital and ABMC

continues attempting to develop alternative sources, such as additional wells and the use of grey water sources.

Additionally, the rising costs associated with inflation and supply chain disruptions have made the procurement of raw materials needed for construction and maintenance of our sites increasingly difficult. The cost of wood alone sky-rocketed during the pandemic. The cost of fertilizer and fuel has nearly doubled due to the Russia-Ukraine conflict. Computer and other information technology equipment has also dramatically increased due to computer chip production shortages. Finally, fixed and recurring costs that are outside of ABMC's control have been increasing. For example, a new security guard contract was negotiated in the Paris Embassy that resulted in a \$1.2 million International Cooperative Administrative Support Services (ICASS) cost increase with the U.S. Department of State. All agencies that are located overseas are required by the State Department to use their security guards. Thus ABMC is required to share these costs.

The cumulative effect of these must-pay cost increases is decreased funding to successfully execute our core mission of maintaining the Commission's commemorative sites to the highest of standards while preserving the legacy of these historic national treasures for generations to come.

Adjustments from the FY 2023 Request

| | |
|--|----------------------|
| FY 2023 Salaries and Expenses - Appropriation | \$87,500,000 |
| Adjustments: | |
| Compensation and Benefits | \$6,012,000 |
| Travel | \$450,000 |
| Cemetery Maintenance and Routine Operations | \$1,955,000 |
| Professional Services Contracts | \$986,000 |
| Information Technology Services and Equipment | \$169,000 |
| Office Space and Routine Administrative Expenses | \$210,000 |
| Services from Other Government Agencies | \$1,521,000 |
| Printing | (\$5,000) |
| Maintenance and Infrastructure Program | \$59,832,000 |
| Subtotal Adjustments | \$71,130,000 |
| FY 2024 Salaries and Expenses | \$158,630,000 |
| FY 2024 Foreign Currency Fluctuations Account | \$0 |
| Total FY 2024 Budget Request | \$158,630,000 |

Compensation and Benefits..... \$6,012,000

For FY 2024, the Commission is requesting \$48,938,000, an increase of \$6,012,000, for Compensation and Benefits to fund 528 FTEs. This request will support the pay requirements for U.S. employees and Local National workforce and fund the personnel benefits for employees worldwide, including housing, health insurance, social security, retirement, and other allowances. The additional FTEs allow ABMC to meet IT requirements such as cybersecurity and enterprise architecture but also to increase the green space workforce to deal with the effects of climate change and plant pest and disease. The agency is also expanding the visitor services and interpretation workforce as tourism rebounds after the pandemic

Travel..... \$450,000

ABMC travel requirements will return to pre-pandemic levels in FY 2024.

Cemetery Maintenance and Routine Operations..... \$1,955,000

In FY 2024, ABMC will fund routine operations at ABMC’s cemeteries, memorials, and visitor centers. This includes routine facility maintenance, horticulture irrigation systems maintenance, supplies, increased cost of utilities and fuel, and routine equipment repair and replacement.

Professional Services Contracts..... \$986,000

This request funds routine and annual contracts for services beyond the grounds of ABMC cemeteries and memorials, such as architectural and design services, auditing and legal services, employee training, temporary employees, translations and collections contracts in FY 2024.

Information Technology Services and Equipment..... \$169,000

The increase in FY 2024 will allow funding for ABMC’s software licenses, cloud and website support, and various systems maintenance requirements.

Office Space Leases and Routine Administrative Operations..... \$210,000

ABMC has office space leases in Arlington, Virginia and in Paris, France. In FY 24, ABMC will continue to take steps to reduce its footprint as it transitions to a more virtual workforce as a result of lessons learned during the pandemic. This line also funds vehicle lease and equipment maintenance contracts in FY 2024.

Services from Other Government Agencies..... \$1,521,000

This is the estimated increase in FY 2024 for ABMC payments under the Department of State’s ICASS, Capital Security Cost-Sharing (CSCS) and Maintenance Cost-Sharing (MCS) and for payments to the Department of the Interior, the Office of Personnel Management, and the Department of Homeland Security.

Printing (\$5,000)

This decrease will limit funding for routine printing, office supplies, and equipment purchases. Included in this line item is safety apparel and protective gear.

Maintenance and Infrastructure Program \$59,832,000

The increase will allow the agency to execute three one-time large projects: construction of the Honolulu Interpretive Center, remediation of sinkholes at the Suresnes American Cemetery, and execution of the Pointe du Hoc Ranger Monument master plan. The agency has also begun feeling the effects of rising inflation and supply chain issues. The costs of raw materials has dramatically increased making construction and maintenance of our facilities more expensive.

Maintenance and Infrastructure Program

(\$ in thousands)

| Program | FY 2022 Appropriation | FY 2023 Appropriation | FY 2024 Request |
|--|--------------------------|--------------------------|--------------------|
| Facilities Management | 1,200 | 800 | 38,295 |
| Interpretation | 1,635 | 650 | 18,226 |
| <i>Education and Outreach</i> | 450 | 300 | 375 |
| <i>Historical Services</i> | - | - | 136 |
| <i>Public Affairs</i> | 425 | - | 1,565 |
| <i>Visitor Services and Interpretation</i> | 760 | 350 | 16,150 |
| Horticulture | 2,200 | - | 1,595 |
| Security | 250 | - | - |
| Information Technology | 2,027 | 400 | 3,066 |
| Cybersecurity | - | - | 500 |
| TOTAL | 7,312 | 1,850 | 61,682 |

The Commission is requesting a total of \$61,682,000 for the Maintenance and Infrastructure Program to support projects in Facilities Management, Interpretation, Horticulture, Security, Vehicle Replacement, and Cemetery and Horticulture Equipment.

A detailed FY 2024 – 2030 project list is provided in Part 3.

Facilities Management..... \$38,295,000

The high quality of the commemorative sites maintained by the Commission demonstrates a careful commitment to America’s war dead buried or memorialized overseas. Commission staff are the stewards of these sites, whose condition reflects the degree to which ABMC has achieved excellence. Operating, maintaining, and improving facilities to this standard requires a robust Facilities Management program.

Major FY 2024 projects the Commission proposes to execute include:

- Construction of the Honolulu Interpretive Center;
- Stabilization of sinkholes which have developed at the Suresnes American Cemetery; and
- Resurface asphalt roadways at the Manila American Cemetery.

Interpretation Program..... \$18,226,000

Meticulously maintaining cemeteries and memorials is and will remain ABMC’s core mission. But that alone is not enough to honor those who served; the Commission must also preserve and communicate their stories of competence, courage, and sacrifice. Telling the story of those who fought and died through the creation of interpretive centers began with the opening of the Normandy Visitor

Center in May 2007. The Commission’s funding request for FY 2024 continues these efforts.

Historical Services..... \$136,000
This request will continue to expand the vanishing treasures program which surveys, processes, digitizes and stores non-record historical documents of the agency.

Education and Outreach..... \$375,000
ABMC’s Education and Outreach Program will include efforts to expand the existing library of ABMC education materials, complete the conversion of website interactives (explaining battles and campaigns relevant to ABMC sites), and continue our partnership with the Smithsonian Institute and the National World War II Museum.

Public Affairs..... \$1,565,000
This request will continue the development of virtual cemetery tours to provide a robust online visitor experience for those who will never have the opportunity to visit an overseas ABMC cemetery.

Visitor Services and Interpretation \$16,150,000
These funds will support the execution and construction related to the Pointe du Hoc Ranger Monument master plan, preserving this historic battleground and ensuring visitor safety, as well as redesigning and replacing visitor center exhibits, cyclic updates to interpretive media and digital preservation of architectural history.

Horticulture..... \$1,595,000
The Commission’s goal for the Horticulture program is to ensure that the horticultural elements of cemetery plot areas, fine lawns, meadows and plantings reflect the honor bestowed upon those who served. These funds will be used to rehabilitate deep wells and water reservoir storage tanks at multiple cemeteries.

Information Technology and Cybersecurity..... \$3,566,000
ABMC’s Information Technology and Cybersecurity programs will include establishing a digitized records management program, IT lifecycle hardware replacement, and robust cybersecurity initiatives that meet DHS standards and requirements.

Official Reception and Representation Expenses

The Commission requests \$15,000 for official reception and representation expenses in FY 2024. This is the same amount funded in FY 2023. A Representation Fund line item of \$15,000 will continue to support ABMC’s worldwide commemorative mission.

Statement of Increases and Decreases by Object Classification

FY 2024 Budget Request

(\$ in thousands)

| Object Class | FY 2022 Appropriation | FY 2023 Appropriation | FY 2024 Request |
|------------------------------------|----------------------------------|----------------------------------|----------------------------|
| Personnel Compensation | 26,327 | 27,760 | 31,912 |
| Personnel Benefits | 13,883 | 14,766 | 16,601 |
| Benefits for Former Personnel | 400 | 400 | 425 |
| Travel & Transportation of Persons | 1,297 | 1,898 | 2,348 |
| Transportation of Things | 828 | 958 | 964 |
| Rent/Communications/Utilities | 6,325 | 6,408 | 6,521 |
| Printing | 260 | 208 | 203 |
| Other Services | 28,812 | 28,985 | 39,781 |
| Supplies & Materials | 4,267 | 4,091 | 4,323 |
| Equipment | 2,241 | 1,746 | 2,567 |
| Land & Structures | 2,860 | 280 | 52,985 |
| TOTAL | 87,500 | 87,500 | 158,630 |

The following narrative describes the increases and decreases by budget object classification.

Personnel Compensation - The Commission requests \$31,912,000. This funding will support a 528 FTE employment level, including allowances authorized for the Commission’s U.S. employees and Foreign National workforce. This request includes funding for a 5.2 percent pay increase for U.S. employees and Local National workforce. The estimate also includes an increase of 63 FTE for FY 2024. The additional FTEs allow ABMC to meet IT requirements such as cybersecurity and enterprise architecture but also to increase the green space workforce to deal with the effects of climate change and plant pest and disease. As the agency has professionalized the facilities management workforce, it must correspondingly increase its procurement workforce to absorb the increased capacity of this budget request. The agency is also expanding the visitor services and interpretation workforce as tourism rebounds after the pandemic.

Personnel Benefits and Benefits for Former Personnel - This \$17,026,000 request includes funding benefits for employees worldwide such as health insurance, social security, and other allowances authorized for the Commission’s U.S. employees and Local National workforce.

Travel and Transportation of Persons – This line item supports travel and transportation requirements for U.S. and Local National workers, U.S. employees and dependents traveling on permanent change of station, U.S. student dependents traveling to or from school, and travel by the Commissioners appointed by the President, who are charged with oversight of Commission operations. ABMC anticipates returning to a pre-pandemic level of travel in FY 2024.

Transportation of Things - This budget request is \$964,000 for the transportation of supplies, materials, spare parts, vehicles and equipment used in the operation, maintenance, and repair of ABMC facilities and for the transportation of household goods in connection with permanent change of station.

Rent, Communications, and Utilities - The Commission requests \$6,521,000 for office space rent; water, gas and electricity; horticulture equipment rental; and postal, telephone, and internet services.

Printing and Reproduction – A \$5,000 decrease for printing cemetery booklets, visitor brochures, photographs, general information pamphlets, and reports is requested.

Other Services - The Commission requests \$39,781,000 for other contractual services, which consist of engineering and technical services; professional support services; horticulture contracts; operation, maintenance, and repair of equipment; information technology services; interagency service agreements (such as payments to the Department of State for ICASS, CSCS and MCS programs); maintenance and repair of vehicles; and employee training. These funds also support the Commission's Maintenance and Infrastructure Program requirements. This request includes \$15,000 (not to exceed) for official reception and representation expenses.

Supplies and Materials – The increase of \$232,000 reflects ABMC's funding requirement for horticulture parts and supplies, visitor center supplies, day-to-day supplies for the cemeteries, and general office supplies and subscriptions.

Equipment - The Commission requests \$2,567,000 to fund the cemetery and horticulture replacement equipment program, vehicles, office and information technology equipment.

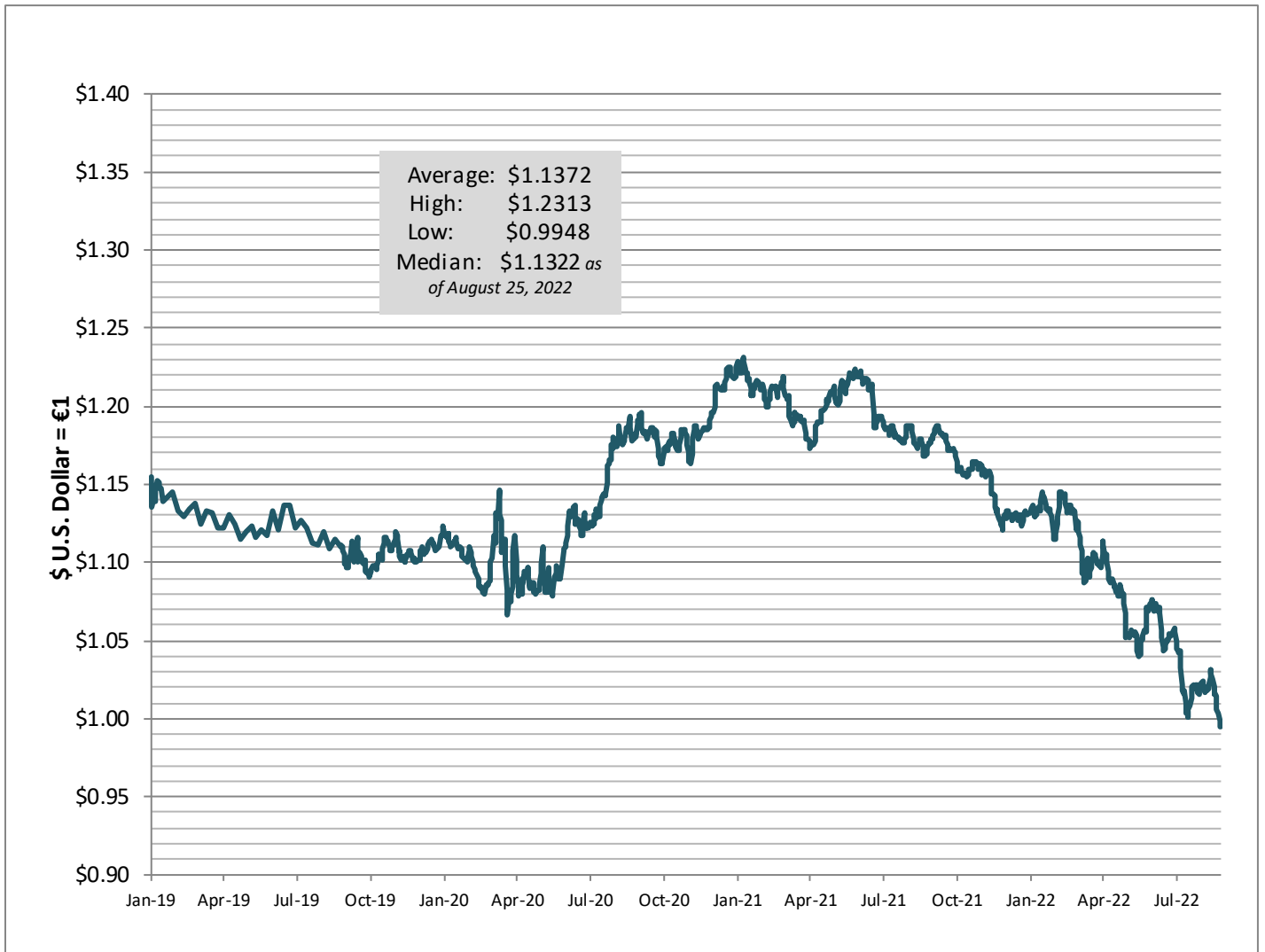
Land and Structures - The request of \$52,985,000 will fund the mix of Maintenance and Infrastructure program requirements. This increase is reflected in the ABMC projects for landscaping, renovation, and construction efforts and detailed in Part 3 below.

Foreign Currency Fluctuations Account

The FCFA addresses exchange rate imbalances between the U.S. Dollar, the European Euro, and other foreign currencies. Due to the current rates of exchange, the budget rate used by ABMC, and unobligated balances in the FCFA, ABMC is not anticipating new funding requirements in FY 2024.

The Commission is requesting to continue the “such sums as may be necessary” language. If the exchange rates at the time of expenditure are above €1 euro = \$1.00 dollar, then funds are transferred from the FCFA to Salaries and Expenses. Under the “such sums as may be necessary” language, if a need arises where the amounts held in the accounts prove to be insufficient the Commission will submit adjusted estimates.

Foreign Currency Exchange Rate Trend



PART 3: MAINTENANCE AND INFRASTRUCTURE PROGRAM - 7 YEAR PROJECT PLAN

(\$ in thousands)

Maintenance and Infrastructure Program - 7 Year Project Plan (FY 2024-2030)

| Program | FY 2024 | FY 2025 | FY 2026 | FY 2027 | FY 2028 | FY 2029 | FY 2030 |
|--|----------------|----------------|----------------|----------------|----------------|----------------|----------------|
| Facilities Management | 38,295 | 3,605 | 8,175 | 9,200 | 8,075 | 16,570 | 22,395 |
| Interpretation | 18,226 | 3,551 | 3,304 | 1,404 | 210 | 465 | - |
| <i>Education and Outreach</i> | 375 | 250 | 250 | - | - | - | - |
| <i>Historical Services</i> | 136 | 236 | 139 | 189 | 20 | - | - |
| <i>Visitor Services and Interpretation</i> | 16,150 | 1,500 | 750 | 1,150 | 125 | 400 | - |
| <i>Public Affairs</i> | 1,565 | 1,565 | 2,165 | 65 | 65 | 65 | - |
| Horticulture | 1,595 | 6,970 | 4,300 | 6,521 | 11,002 | 4,786 | - |
| Security | - | 2,500 | 10,000 | - | 100 | - | - |
| Information Technology | 3,066 | 3,195 | 4,307 | 2,750 | 2,150 | 1,681 | - |
| Cybersecurity | 500 | 550 | 605 | 665 | - | - | - |
| TOTAL | 61,682 | 20,371 | 30,691 | 20,540 | 21,537 | 23,502 | 22,395 |

ABMC FY 2024 Project List

in thousands \$

| Program | Location | Project Type | Project Name | Estimate |
|-----------------------|----------------------------------|---|--|----------|
| Facilities Management | Honolulu Memorial | Landscaping | Trim Trees Around Memorial | \$55 |
| Facilities Management | Honolulu Memorial | Construction – Improvements/Renovations | Design and Construct Honolulu Interpretive Center | \$19,000 |
| Facilities Management | Suresnes American Cemetery | Construction – Improvements/Renovations | Sinkhole Stabilization | \$10,000 |
| Facilities Management | Corozal American Cemetery | Major Repairs And Renovations | Leaking Roof Reparation | \$125 |
| Facilities Management | Flanders Field American Cemetery | Construction – Improvements/Renovations | Electrical & Gas Non-Conformity | \$60 |
| Facilities Management | Brookwood American Cemetery | Major Repairs And Renovations | Fire Proofing Mezzanine in Workshop | \$8 |
| Facilities Management | Manila American Cemetery | Major Repairs And Renovations | Resurface Asphalt Roadways | \$500 |
| Facilities Management | Luxembourg American Cemetery | Construction – New | Construct Path to General Patton's Grave | \$250 |
| Facilities Management | Luxembourg American Cemetery | Major Repairs And Renovations | Repave Cemetery Paths | \$275 |
| Facilities Management | Netherlands American Cemetery | Major Repairs And Renovations | Replace Museum/Map Room Brick Flooring | \$22 |
| Facilities Management | Netherlands American Cemetery | Major Repairs And Renovations | Resurface Museum/Map Room Ceiling | \$20 |
| Facilities Management | Naval Monument at Gibraltar | Major Repairs And Renovations | Renovate Monument | \$100 |
| Facilities Management | Florence American Cemetery | Major Repairs And Renovations | Renovate Cobblestone Bridge Waterproofing Membrane | \$350 |

| | | | | |
|-----------------------|--------------------------------|---|---|-----------------|
| Facilities Management | North Africa American Cemetery | Major Repairs And Renovations | Replace Plot Area Border Stones | \$250 |
| Facilities Management | Suresnes American Cemetery | Major Repairs And Renovations | Renovate/Replace Storm Drainage System | \$200 |
| Facilities Management | Bellicourt American Monument | Construction – Improvements/Renovations | Security Lighting | \$80 |
| Facilities Management | OO | Construction – Improvements/Renovations | Design Funding (15% and P&D) Make Up | \$5,500 |
| Facilities Management | OO | Construction – Improvements/Renovations | Design Funding (15% and P&D) - FY24 Request | \$1,500 |
| | | | | \$38,295 |

| Program | Location | Project Type | Project Name | Estimate |
|---------------------|----------|------------------------------------|---|--------------|
| Historical Services | HQ | Professional Services | Education Program | \$375 |
| Historical Services | OO | Studies, Analyses, And Evaluations | Cyclic Collections Conservation Treatment | \$100 |
| Historical Services | HQ | Additions to Permanent Collections | Permanent Collection | \$36 |
| | | | | \$511 |

| Program | Location | Project Type | Project Name | Estimate |
|-------------------------------------|-------------------------------|--------------------|---|-----------------|
| Visitor Services and Interpretation | Pointe du Hoc Ranger Monument | Construction – New | NOPH Master Plan Execution and Construction | \$15,000 |
| Visitor Services and Interpretation | Cambridge American Cemetery | Exhibits | Fabricate/Install Exhibit Upgrades | \$1,000 |
| Visitor Services and Interpretation | Sicily-Rome American Cemetery | Exhibits | Redesign exhibits | \$150 |
| | | | | \$16,150 |

| Program | Location | Project Type | Project Name | Estimate |
|----------------|----------|-----------------------|--|----------------|
| Public Affairs | HQ | Professional Services | VR Tour Experience and AR-assisted Guide | \$1,500 |
| Public Affairs | HQ | Professional Services | ABMC Orientation and Outreach Program | \$65 |
| | | | | \$1,565 |

| Program | Location | Project Type | Project Name | Estimate |
|--------------|---------------------------------|-------------------------|---|----------------|
| Horticulture | Netherlands American Cemetery | Plot Leveling | Releveling Plots | \$40 |
| Horticulture | Meuse-Argonne American Cemetery | Drainage and Irrigation | Rehab Deep Well and Waterproof/Coat Pond | \$695 |
| Horticulture | Oise-Aisne American Cemetery | Drainage and Irrigation | Investigate Alternative Irrigation System Water Sources | \$180 |
| Horticulture | Aisne-Marne American Cemetery | Drainage and Irrigation | Rehabilitate Deep Well | \$170 |
| Horticulture | Ardennes American Cemetery | Drainage and Irrigation | Rehabilitate Two Deep Wells | \$315 |
| Horticulture | Brittany American Cemetery | Drainage and Irrigation | Renovate Water Reservoir Storage Tank Interiors | \$195 |
| | | | | \$1,595 |

| Program | Location | Project Type | Project Name | Estimate |
|------------------------|--------------------------------|---------------------|--|----------------|
| Information Technology | HQ | Records Management | Establish a Digitized Records Management Program | \$1,250 |
| Information Technology | OO | Equipment | IT Lifecycle Hardware Replacement | \$150 |
| Information Technology | HQ | Equipment | Establish a Lifecycle Hardware Replacement for the Network Appliances (Part I) | \$282 |
| Information Technology | HQ | IT Support Services | Continue to Mature and Expand a Centralized and Engaging Platform (Phase 1) | \$484 |
| Information Technology | HQ | IT Support Services | Continue to Mature and Expand a Centralized and Engaging Platform (Phase 2) | \$587 |
| Information Technology | North Africa American Cemetery | IT Support Services | Install Internet Access in Refectory | \$50 |
| Information Technology | HQ | IT Support Services | IT Service to Support PAO's VR Tour Experience and AR-assisted Guide | \$263 |
| | | | | \$3,066 |

| Program | Location | Project Type | Project Name | Estimate |
|---------------|----------|---------------------|---------------------------------|--------------|
| Cybersecurity | HQ | IT Support Services | Cybersecurity Program (Phase 1) | \$500 |
| | | | | \$500 |

TOTAL FY 2024 **\$61,682**

ABMC FY 2025 Project List

in thousands \$

| Program | Location | Project Type | Project Name | Estimate |
|-----------------------|--|--|---|----------------|
| Facilities Management | Honolulu Memorial | Major Repairs And Renovations | Clean Memorial Stonework | \$175 |
| Facilities Management | Mardasson Monument | Studies, Analyses, And Evaluations | Mardasson Master Plan and Study | \$750 |
| Facilities Management | Lorraine American Cemetery | Construction– Improvements/Renovations | Renovate Roads, Pathways, Borderstones & Storm Drainage | \$500 |
| Facilities Management | Netherlands American Cemetery | Major Repairs And Renovations | Clean Exterior of Tower | \$50 |
| Facilities Management | Netherlands American Cemetery | Major Repairs And Renovations | Replace Stones at Wall of the Missing | \$40 |
| Facilities Management | Netherlands American Cemetery | Construction– Improvements/Renovations | Resurface Asphalt Service Paths | \$125 |
| Facilities Management | Flanders Field American Cemetery | Construction– Improvements/Renovations | Install Chapel Waterproofing | \$70 |
| Facilities Management | Lafayette Escadrille Memorial Cemetery | Construction– Improvements/Renovations | Renovate Pathways | \$125 |
| Facilities Management | Somme American Cemetery | Major Repairs And Renovations | Repair/Replace Aggregate Concrete & Borders | \$100 |
| Facilities Management | Luxembourg American Cemetery | Major Repairs And Renovations | Repoint Chapel Joints and Clean Facade | \$90 |
| Facilities Management | Meuse-Argonne American Cemetery | Major Repairs And Renovations | Renovate/Repaint Quarters & Exterior Walls | \$80 |
| Facilities Management | OO | Construction– Improvements/Renovations | Design Funding (15% and P&D) - FY25 request | \$1,500 |
| | | | | \$3,605 |

| Program | Location | Project Type | Project Name | Estimate |
|---------------------|----------|------------------------------------|---|--------------|
| Historical Services | HQ | Professional Services | Education Program | \$250 |
| Historical Services | OO | Studies, Analyses, And Evaluations | Cyclic Collections Conservation Treatment | \$100 |
| Historical Services | OO | Studies, Analyses, And Evaluations | Conserve & Treat Collections | \$100 |
| Historical Services | HQ | Additions to Permanent Collections | Permanent Collection | \$36 |
| | | | | \$486 |

| Program | Location | Project Type | Project Name | Estimate |
|-------------------------------------|-------------------------------|--------------|---------------------------------------|----------------|
| Visitor Services and Interpretation | Normandy American Cemetery | Exhibits | Replace/Improve NVC Interpretive Film | \$600 |
| Visitor Services and Interpretation | Chateau-Thierry Monument | Exhibits | Rehabilitate Exhibits | \$500 |
| Visitor Services and Interpretation | Sicily-Rome American Cemetery | Exhibits | Exhibit Fabrication | \$400 |
| | | | | \$1,500 |

| Program | Location | Project Type | Project Name | Estimate |
|----------------|----------|-----------------------|--|----------------|
| Public Affairs | HQ | Professional Services | VR Tour Experience and AR-assisted Guide | \$1,500 |
| Public Affairs | HQ | Professional Services | ABMC Orientation and Outreach Program | \$65 |
| | | | | \$1,565 |

| Program | Location | Project Type | Project Name | Estimate |
|--------------|----------------------------------|------------------------------------|--|----------------|
| Horticulture | Ardennes American Cemetery | Drainage and Irrigation | Install New Irrigation System | \$1,450 |
| Horticulture | Manila American Cemetery | Landscaping | Re-level Plot Areas Phase 1 | \$1,250 |
| Horticulture | Luxembourg American Cemetery | Drainage and Irrigation | Upgrade Drainage and Aeration | \$350 |
| Horticulture | OO | Studies, Analyses, And Evaluations | Study/Design Drainage & Irrigation Systems | \$200 |
| Horticulture | Sicily-Rome American Cemetery | Major Repairs And Renovations | Waterproof Reflection Pond | \$150 |
| Horticulture | Henri-Chapelle American Cemetery | Drainage and Irrigation | Install New Irrigation System | \$1,500 |
| Horticulture | Oise-Aisne American Cemetery | Drainage and Irrigation | Install New Irrigation System | \$1,450 |
| Horticulture | Lorraine American Cemetery | Drainage and Irrigation | Rehabilitate Deep Well | \$375 |
| Horticulture | Henri-Chapelle American Cemetery | Drainage and Irrigation | Rehabilitate Deep Well | \$245 |
| | | | | \$6,970 |

| Program | Location | Project Type | Project Name | Estimate |
|----------|--------------------------|--------------------|--------------------------------------|----------------|
| Security | OO | Equipment | Multi-Site Bollards | \$1,500 |
| Security | Manila American Cemetery | Construction – New | Main Entry Vehicle Screening Feature | \$1,000 |
| | | | | \$2,500 |

| Program | Location | Project Type | Project Name | Estimate |
|------------------------|----------------------------|---------------------|--|----------------|
| Information Technology | OO | Equipment | IT Lifecycle Hardware Replacement | \$150 |
| Information Technology | Suresnes American Cemetery | Records Management | Records Management Digitization – Survey, Processing, Digitization, and Storage of Non-Record Historic Documents: SUAC/LEMC | \$545 |
| Information Technology | OO | Records Management | Records Management Digitization: Identification, Cataloging, Digitization, and Rehousing of Non-Record Archives Including Historic Documents | \$150 |
| Information Technology | HQ | IT Support Services | Discovered unstable electricity supply to the network equipment during IT modernization initiatives. Unstable electricity supply reduces the life of the equipment and increase overall, long term O&M expenses. | \$750 |
| Information Technology | HQ | IT Support Services | Continue to mature and expand a centralized and engaging platform (Phase 3) | \$533 |
| Information Technology | HQ | IT Support Services | Develop and expand a centralized and engaging platform that connects all current and future ABMC audiences of all ages from the Authoritative Relational Burial Database effort | \$440 |
| Information Technology | HQ | IT Support Services | Deploy a new PMO Management System using modern technologies | \$350 |
| Information Technology | HQ | IT Support Services | IT Service to support PAO's VR Tour Experience and AR-assisted Guide | \$277 |
| | | | | \$3,195 |

| Program | Location | Project Type | Project Name | Estimate |
|---------------|----------|---------------------|---------------------------------|--------------|
| Cybersecurity | HQ | IT Support Services | Cybersecurity Program (Phase 2) | \$550 |
| | | | | \$550 |

TOTAL FY 2025 \$20,371

ABMC FY 2026 Project List

in thousands \$

| Program | Location | Project Type | Project Name | Estimate |
|-----------------------|-------------------------------------|--|--|----------------|
| Facilities Management | Henri-Chapelle American Cemetery | Construction – Improvements/Renovations | Replacment of Entry Court Silex Tiles | \$1,000 |
| Facilities Management | Mardasson Monument | Construction – Improvements/Renovations | Replace Asphalted Road with New Material | \$1,500 |
| Facilities Management | Netherlands American Cemetery | Construction – Improvements/Renovations | Resurfacing Asphalt - Phase 2 | \$100 |
| Facilities Management | OO | Construction – Improvements/Renovations | Design Funding (15% and P&D) - FY26 request | \$1,500 |
| Facilities Management | Mardasson Monument | Major Repairs And Renovations | Improve Safety and Handicap Access to the Memorial Roof | \$4,000 |
| Facilities Management | Florence American Cemetery | Major Repairs And Renovations | Analyze/Repair Marble Map | \$75 |
| | | | | \$8,175 |

| Program | Location | Project Type | Project Name | Estimate |
|---------------------|----------|---------------------------------------|--|--------------|
| Historical Services | HQ | Professional Services | Education Program | \$250 |
| Historical Services | OO | Studies, Analyses, And Evaluations | Cyclic Collections Conservation Treatment | \$100 |
| Historical Services | HQ | Additions to Permanent Collections | Permanent Collection | \$39 |
| | | | | \$389 |

| Program | Location | Project Type | Project Name | Estimate |
|-------------------------------------|------------------------------|--------------|---|--------------|
| Visitor Services and Interpretation | Manila American Cemetery | Exhibits | Rehabilitate Exhibits | \$500 |
| Visitor Services and Interpretation | Cabanatuan American Memorial | Exhibits | Design/Install Exhibits at Visitor Building | \$250 |
| | | | | \$750 |

| Program | Location | Project Type | Project Name | Estimate |
|----------------|----------|-----------------------|--|----------------|
| Public Affairs | HQ | Professional Services | VR Tour Experience and AR-assisted Guide | \$1,500 |
| Public Affairs | HQ | Professional Services | Virtual Tour Experience and Tour Guides | \$600 |
| Public Affairs | HQ | Professional Services | ABMC Orientation and Outreach Program | \$65 |
| | | | | \$2,165 |

| Program | Location | Project Type | Project Name | Estimate |
|--------------|----------------------------|------------------------------------|--|----------------|
| Horticulture | Manila American Cemetery | Drainage and Irrigation | Re-level Plot Areas Phase 2 | \$1,250 |
| Horticulture | Lorraine American Cemetery | Drainage and Irrigation | Install New Irrigation System | \$1,500 |
| Horticulture | Corozal American Cemetery | Drainage and Irrigation | Replace Irrigation System | \$1,250 |
| Horticulture | OO | Studies, Analyses, And Evaluations | Study/Design Drainage & Irrigation Systems | \$100 |
| Horticulture | OO | Studies, Analyses, And Evaluations | Study/Design Drainage & Irrigation Systems | \$100 |
| Horticulture | OO | Studies, Analyses, And Evaluations | Study/Design Drainage & Irrigation Systems | \$100 |
| | | | | \$4,300 |

| Program | Location | Project Type | Project Name | Estimate |
|----------|----------|--------------|--|-----------------|
| Security | OO | Equipment | CCTV survey, procurement, and installation of appropriate real-time monitoring system for all overseas locations | \$10,000 |
| | | | | \$10,000 |

| Program | Location | Project Type | Project Name | Estimate |
|------------------------|----------|---------------------|--|----------------|
| Information Technology | OO | Equipment | IT Lifecycle Hardware Replacement | \$150 |
| Information Technology | HQ | IT Support Services | ABMC Enterprise IT 3.0 (Phase I) | \$2,000 |
| Information Technology | HQ | Equipment | IT Lifecycle Hardware Replacement | \$150 |
| Information Technology | HQ | Equipment | Establish a lifecycle hardware replacement for the network appliances (Part II) | \$260 |
| Information Technology | OO | Records Management | Records Management Digitization: Identification, Cataloging, Digitization, and Rehousing of Non-Record Archives Including Historic Documents | \$150 |
| Information Technology | HQ | IT Support Services | Deploy Wi-Fi Service and Network Capabilities in Cemeteries | \$1,000 |
| Information Technology | HQ | IT Support Services | IT Service to support PAO's Virtual Tour Experience and Tour Guides | \$306 |
| Information Technology | HQ | IT Support Services | IT Service to support PAO's VR Tour Experience and AR-assisted Guide | \$291 |
| | | | | \$4,307 |

| Program | Location | Project Type | Project Name | Estimate |
|---------------|----------|---------------------|---------------------------------|--------------|
| Cybersecurity | HQ | IT Support Services | Cybersecurity Program (Phase 3) | \$605 |
| | | | | \$605 |

TOTAL FY 2026 **\$30,691**

ABMC FY 2027 Project List

in thousands \$

| Program | Location | Project Type | Project Name | Estimate |
|-----------------------|--------------------------------|---|--|----------|
| Facilities Management | Aisne-Marne American Cemetery | Major Repairs And Renovations | Replace Slate Roofs (AMAC Visitor Bldg. & Quarters) | \$300 |
| Facilities Management | Mardasson Monument | Construction – Improvements/Renovations | Monuments Improvements | \$2,000 |
| Facilities Management | North Africa American Cemetery | Major Repairs And Renovations | Replace/Repair Memorial Court Limestone Pillars | \$50 |
| Facilities Management | Suresnes American Cemetery | Construction – New | Construct New Public Restrooms | \$500 |
| Facilities Management | Florence American Cemetery | Construction – Improvements/Renovations | Repair/Repoint Entrance, Bridge & Memorial Stonework | \$350 |
| Facilities Management | Netherlands American Cemetery | Construction – Improvements/Renovations | Install Trip Prevention Railings | \$40 |
| Facilities Management | Mardasson Monument | Major Repairs And Renovations | Additional Funds Repair Works Phase II | \$995 |
| Facilities Management | Mexico City National Cemetery | Major Repairs And Renovations | Replace Volcanic Pathway Stones | \$30 |
| Facilities Management | Sicily-Rome American Cemetery | Major Repairs And Renovations | Refinish Stone Sculptures and Map Room Mosaic | \$50 |
| Facilities Management | Chateau-Thierry Monument | Construction – Improvements/Renovations | Repave Entrance Road | \$800 |
| Facilities Management | Florence American Cemetery | Major Repairs And Renovations | Replace/Repair Travertine Rosebed Borders | \$200 |
| Facilities Management | Florence American Cemetery | Major Repairs And Renovations | Replace Quarters' Entryway Stone & Curbing | \$80 |
| Facilities Management | North Africa American Cemetery | Construction – Improvements/Renovations | Resurface Asphalt Roads & Repair Storm Drainage | \$200 |

| | | | | |
|-----------------------|---------------------------------|---|---|-------|
| Facilities Management | Luxembourg American Cemetery | Construction – Improvements/Renovations | Remodel VC Administrative Office | \$250 |
| Facilities Management | Netherlands American Cemetery | Construction – Improvements/Renovations | Extend Garages at Quarters | \$80 |
| Facilities Management | Lorraine American Cemetery | Construction – Improvements/Renovations | Replace Perimeter Fenceline & Gates | \$200 |
| Facilities Management | Cambridge American Cemetery | Construction – Improvements/Renovations | Rebuild Service Area | \$150 |
| Facilities Management | Lorraine American Cemetery | Construction – New | Construct Overflow Parking Lot | \$200 |
| Facilities Management | Oise-Aisne American Cemetery | Major Repairs And Renovations | Replace Roadway Border Stones | \$130 |
| Facilities Management | Meuse-Argonne American Cemetery | Major Repairs And Renovations | Repair/Replace Drains & Asphalt at Hangar Bldg | \$300 |
| Facilities Management | Suresnes American Cemetery | Studies, Analyses, And Evaluations | Study to Rehabilitate the Welcome Center Parking Renovation, Phase II | \$50 |
| Facilities Management | Florence American Cemetery | Major Repairs And Renovations | Repair Travertine Curbs at Office/Visitor Room | \$70 |
| Facilities Management | Netherlands American Cemetery | Construction – Improvements/Renovations | Remodel/Convert Public Restrooms | \$30 |
| Facilities Management | Lorraine American Cemetery | Construction – Improvements/Renovations | Renovate Quarters | \$40 |
| Facilities Management | Lorraine American Cemetery | Major Repairs And Renovations | Replace Floors in Quarters | \$30 |
| Facilities Management | Lorraine American Cemetery | Major Repairs And Renovations | Replace Floors in Quarters | \$30 |
| Facilities Management | Suresnes American Cemetery | Studies, Analyses, And Evaluations | Study/Renovate Parking | \$50 |
| Facilities Management | Montsec American Monument | Major Repairs And Renovations | Monument Cleaning | \$300 |

| | | | | |
|-----------------------|---------------------------------|---|---|----------------|
| Facilities Management | Cambridge American Cemetery | Studies, Analyses, And Evaluations | Study for Service Area Renovation | \$50 |
| Facilities Management | Meuse-Argonne American Cemetery | Construction – New | Construct Shielded Platform for Headstone Storage/Crushing Area | \$100 |
| Facilities Management | Netherlands American Cemetery | Major Repairs And Renovations | Replace Patched Stone on Entrance Pillar | \$25 |
| Facilities Management | Suresnes American Cemetery | Construction – Improvements/Renovations | Install Security Barrier Gate | \$20 |
| Facilities Management | OO | Construction – Improvements/Renovations | Design Funding (15% and P&D) - FY27 request | \$1,500 |
| | | | | \$9,200 |

| Program | Location | Project Type | Project Name | Estimate |
|---------------------|----------|------------------------------------|---|--------------|
| Historical Services | OO | Studies, Analyses, And Evaluations | Conserve & Treat Collections | \$100 |
| Historical Services | HQ | Exhibits | Create Temporary Exhibits: WWII end & ABMC role | \$50 |
| Historical Services | HQ | Additions to Permanent Collections | Permanent Collection | \$39 |
| | | | | \$189 |

| Program | Location | Project Type | Project Name | Estimate |
|-------------------------------------|----------------------------------|--------------|-------------------------|----------------|
| Visitor Services and Interpretation | Normandy American Cemetery | Exhibits | Rehab/Upgrades Exhibits | \$500 |
| Visitor Services and Interpretation | Meuse-Argonne American Cemetery | Exhibits | Rehabilitate Exhibits | \$400 |
| Visitor Services and Interpretation | Flanders Field American Cemetery | Exhibits | Rehabilitate Exhibits | \$250 |
| | | | | \$1,150 |

| Program | Location | Project Type | Project Name | Estimate |
|----------------|----------|-----------------------|---------------------------------------|-------------|
| Public Affairs | HQ | Professional Services | ABMC Orientation and Outreach Program | \$65 |
| | | | | \$65 |

| Program | Location | Project Type | Project Name | Estimate |
|--------------|-------------------------------|------------------------------------|---|----------------|
| Horticulture | Normandy American Cemetery | Drainage and Irrigation | Install New Irrigation System | \$3,950 |
| Horticulture | Luxembourg American Cemetery | Drainage and Irrigation | Install New Irrigation System | \$1,750 |
| Horticulture | Netherlands American Cemetery | Studies, Analyses, And Evaluations | Investigate Alternative Irrigation System Water Sources | \$180 |
| Horticulture | Normandy American Cemetery | Landscaping | Replace Holly Hedges | \$16 |
| Horticulture | Manila American Cemetery | Landscaping | Update Cemetery Planting Plans | \$266 |
| Horticulture | Suresnes American Cemetery | Landscaping | Replace Alignment Trees | \$13 |
| Horticulture | Corozal American Cemetery | Landscaping | Improve/Modify Planting Plans | \$266 |
| Horticulture | Lorraine American Cemetery | Drainage and Irrigation | Repair Water Pumping Station | \$50 |
| Horticulture | Normandy American Cemetery | Landscaping | Upgrade/Replace Green Parking Plants | \$30 |
| | | | | \$6,521 |

| Program | Location | Project Type | Project Name | Estimate |
|------------------------|--------------------------------|---------------------|---|----------------|
| Information Technology | OO | Equipment | IT Lifecycle Hardware Replacement | \$150 |
| Information Technology | North Africa American Cemetery | Records Management | Document Digital Preservation and Access | \$150 |
| Information Technology | HQ | IT Support Services | ABMC Enterprise IT 3.0 (Phase II) | \$2,000 |
| Information Technology | OO | Records Management | Records Management Digitization - Processing, Digitization, and Storage of Historic Documents | \$200 |
| Information Technology | OO | Records Management | Records Management Digitization Project | \$100 |
| Information Technology | HQ | Equipment | IT Lifecycle Hardware Replacement | \$150 |
| | | | | \$2,750 |

| Program | Location | Project Type | Project Name | Estimate |
|---------------|----------|---------------------|---------------------------------|--------------|
| Cybersecurity | HQ | IT Support Services | Cybersecurity Program (Phase 4) | \$665 |
| | | | | \$665 |

TOTAL FY 2027 **\$20,540**

ABMC FY 2028 Project List

in thousands \$

| Program | Location | Project Type | Project Name | Estimate |
|-----------------------|----------------------------|---|---|-----------------|
| Facilities Management | West Coast Memorial | Major Repairs And Renovations | Clean and Repair West Coast Memorial | \$75 |
| Facilities Management | HQ | IT Support Services | Procure Integrated Management System Phase 2 | \$250 |
| Facilities Management | Honolulu Memorial | Major Repairs And Renovations | Renovate Memorial Fountain | \$30 |
| Facilities Management | Mardasson Monument | Construction – New | Create storage, breakroom, maintenance building for maintenance crew. | \$5,000 |
| Facilities Management | Clark Veterans Cemetery | Major Repairs And Renovations | Replace Flagpole | \$20 |
| Facilities Management | Suresnes American Cemetery | Construction – New | Study/Design & Construct Quarters | \$1,200 |
| Facilities Management | OO | Construction – Improvements/Renovations | Design Funding (15% and P&D) - FY28 Request | \$1,500 |
| | | | | \$8,075 |

| Program | Location | Project Type | Project Name | Estimate |
|---------------------|-----------------|------------------------------------|---|-----------------|
| Historical Services | OO | Studies, Analyses, And Evaluations | Cyclic Collections Conservation Treatment | \$20 |
| | | | | \$20 |

| Program | Location | Project Type | Project Name | Estimate |
|-------------------------------------|--|--------------|------------------|--------------|
| Visitor Services and Interpretation | Lafayette Escadrille Memorial Cemetery | Exhibits | Exhibit upgrades | \$125 |
| | | | | \$125 |

| Program | Location | Project Type | Project Name | Estimate |
|----------------|----------|-----------------------|---------------------------------------|-------------|
| Public Affairs | HQ | Professional Services | ABMC Orientation and Outreach Program | \$65 |
| | | | | \$65 |

| Program | Location | Project Type | Project Name | Estimate |
|--------------|--------------------------------|-------------------------|---|----------|
| Horticulture | Clark Veterans Cemetery | Drainage and Irrigation | Replace Irrigation System | \$3,950 |
| Horticulture | Netherlands American Cemetery | Drainage and Irrigation | Install New Irrigation System | \$2,300 |
| Horticulture | Mardasson Monument | Landscaping | Improve horticulture features | \$3,000 |
| Horticulture | Manila American Cemetery | Landscaping | Update Cemetery Planting Plans | \$266 |
| Horticulture | Cemeteries | Landscaping | Remove Infected Trees | \$56 |
| Horticulture | Cemeteries | Landscaping | Tree Removal due to European Spruce Bark Beetle | \$50 |
| Horticulture | Aisne-Marne American Cemetery | Landscaping | Woodland Restoration (Belleau wood) | \$60 |
| Horticulture | Corozal American Cemetery | Drainage and Irrigation | Explore alternative water sources for irrigation system | \$241 |
| Horticulture | Cemeteries | Landscaping | Remove Infected Trees | \$31 |
| Horticulture | North Africa American Cemetery | Drainage and Irrigation | Study and identify potential solutions for salinity/high turbidity levels of deep wells | \$583 |

| | | | | |
|--------------|--------------------------------|-------------------------|---------------------------------------|-------|
| Horticulture | North Africa American Cemetery | Landscaping | Relevel Terrace and Pathway gravel | \$100 |
| Horticulture | Corozal American Cemetery | Drainage and Irrigation | Water Pump | \$350 |
| Horticulture | North Africa American Cemetery | Landscaping | Develop Holly Oak alignment tree plan | \$15 |

\$11,002

| Program | Location | Project Type | Project Name | Estimate |
|----------|----------|--------------|-----------------------|----------|
| Security | OO | Equipment | Security Enhancements | \$100 |

\$100

| Program | Location | Project Type | Project Name | Estimate |
|------------------------|----------|---------------------|---|----------|
| Information Technology | HQ | IT Support Services | ABMC Enterprise IT 3.0 (Phase III) | \$2,000 |
| Information Technology | OO | Records Management | Records Management Digitization - Processing, Digitization, and Storage of Historic Documents | \$150 |

\$2,150

TOTAL FY 2028

\$21,537

ABMC FY 2029 Project List

in thousands \$

| Program | Location | Project Type | Project Name | Estimate |
|-----------------------|--|---|--|-----------------|
| Facilities Management | Honolulu Memorial | Major Repairs And Renovations | Restore Planting Beds | \$60 |
| Facilities Management | Normandy American Cemetery | Construction – Improvements/Renovations | Extend Service Area & Renovate Roof | \$500 |
| Facilities Management | Somme American Cemetery | Construction – Improvements/Renovations | Expand Service Area | \$400 |
| Facilities Management | Epinal American Cemetery | Construction – Improvements/Renovations | Redesign/Extend Office Space | \$250 |
| Facilities Management | Cambridge American Cemetery | Major Repairs And Renovations | Renovate/Repave Visitor Parking Lot & Sidewalks | \$500 |
| Facilities Management | Henri-Chapelle American Cemetery | Construction – Improvements/Renovations | Repare Perimeter Wall | \$500 |
| Facilities Management | Montsec American Monument | Construction – New | Construct Public Restrooms - Expansion to include electricity. Feasibility study ongoing | \$250 |
| Facilities Management | Suresnes American Cemetery | Studies, Analyses, And Evaluations | Study/Design Service Area | \$50 |
| Facilities Management | Lafayette Escadrille Memorial Cemetery | Studies, Analyses, And Evaluations | Study/Renovate Bridge | \$125 |
| Facilities Management | Meuse-Argonne American Cemetery | Construction – New | Construct Extension to Hangar Building | \$70 |
| Facilities Management | Florence American Cemetery | Major Repairs And Renovations | Install Hydraulic Lift | \$60 |
| Facilities Management | Florence American Cemetery | Major Repairs And Renovations | Demolition of Old Pump Station | \$60 |

| | | | | |
|-----------------------|----------------------------------|---|--|---------|
| Facilities Management | Meuse-Argonne American Cemetery | Construction – Improvements/Renovations | Rebuild/Expand Compost Platform | \$50 |
| Facilities Management | Flanders Field American Cemetery | Major Repairs And Renovations | Replace Entrance Eagle Bas Reliefs | \$20 |
| Facilities Management | Corozal American Cemetery | Studies, Analyses, And Evaluations | Corozal Master Plan study | \$300 |
| Facilities Management | Lorraine American Cemetery | Construction – Improvements/Renovations | Chapel Entrance | \$75 |
| Facilities Management | Suresnes American Cemetery | Major Repairs And Renovations | SUAC Headstone realignment | \$3,000 |
| Facilities Management | Corozal American Cemetery | Major Repairs And Renovations | Place Holder: Relevel/ realign the headstones | \$3,000 |
| Facilities Management | Ardennes American Cemetery | Major Repairs And Renovations | Memorial Stainless Steel Doors Refurbishment | \$250 |
| Facilities Management | Cambridge American Cemetery | Major Repairs And Renovations | Renovate Field of Honor Pathways | \$650 |
| Facilities Management | Suresnes American Cemetery | Landscaping | SUAC Releveling of plots after other projects are complete | \$1,500 |
| Facilities Management | Aisne-Marne American Cemetery | Major Repairs And Renovations | Resurfacing the paths & roads | \$400 |
| Facilities Management | Henri-Chapelle American Cemetery | Major Repairs And Renovations | Replace handrails leading to colonnades and to the cemetery | \$300 |
| Facilities Management | Sicily-Rome American Cemetery | Major Repairs And Renovations | Waterproof Reflection Pond | \$200 |
| Facilities Management | Oise-Aisne American Cemetery | Construction – Improvements/Renovations | The handicap ramp at the memorial | \$500 |
| Facilities Management | Henri-Chapelle American Cemetery | Construction – Improvements/Renovations | Install handicap ramp from main entrance to plots | \$300 |
| Facilities Management | North Africa American Cemetery | Major Repairs And Renovations | Identify US/European contractors for noble material work - Cyclical, every 7 years | \$100 |

| | | | | |
|-----------------------|--|---|---|-----------------|
| Facilities Management | Suresnes American Cemetery | Major Repairs And Renovations | SUAC Loggia Renovation (Address condensation issues) | \$100 |
| Facilities Management | Sicily-Rome American Cemetery | Major Repairs And Renovations | Replace Cladding North and South Gardens | \$80 |
| Facilities Management | Brookwood American Cemetery | Construction – Improvements/Renovations | Chapel restoration | \$500 |
| Facilities Management | North Africa American Cemetery | Construction – Improvements/Renovations | Map Room Mosaic Restoration | \$80 |
| Facilities Management | North Africa American Cemetery | Major Repairs And Renovations | Clean historical stonework - Cyclical, every 7 years | \$80 |
| Facilities Management | Lafayette Escadrille Memorial Cemetery | Major Repairs And Renovations | 5 Year cleaning of the memorial | \$250 |
| Facilities Management | Oise-Aisne American Cemetery | Major Repairs And Renovations | Redo asphalt at the cemetery path. | \$250 |
| Facilities Management | Aisne-Marne American Cemetery | Major Repairs And Renovations | Rehab USMC Monument | \$100 |
| Facilities Management | Aisne-Marne American Cemetery | Construction – Improvements/Renovations | Rethink the staircase of the Chapel & natural paths behind the chapel | \$100 |
| Facilities Management | Sicily-Rome American Cemetery | Major Repairs And Renovations | Bronze Restoration | \$60 |
| Facilities Management | OO | Construction – Improvements/Renovations | Design Funding (15% and P&D) - FY29 Request | \$1,500 |
| | | | | \$16,570 |

| Program | Location | Project Type | Project Name | Estimate |
|-------------------------------------|-------------------------------|--------------|-------------------------|--------------|
| Visitor Services and Interpretation | Netherlands American Cemetery | Exhibits | Rehab/Upgrades Exhibits | \$400 |
| | | | | \$400 |

| Program | Location | Project Type | Project Name | Estimate |
|----------------|----------|-----------------------|---------------------------------------|-------------|
| Public Affairs | HQ | Professional Services | ABMC Orientation and Outreach Program | \$65 |
| | | | | \$65 |

| Program | Location | Project Type | Project Name | Estimate |
|--------------|-------------------------------|-------------------------|---|----------------|
| Horticulture | Corozal American Cemetery | Landscaping | Plot releveling | \$3,100 |
| Horticulture | Suresnes American Cemetery | Drainage and Irrigation | Install New Irrigation System | \$1,500 |
| Horticulture | Cemeteries | Landscaping | Remove Infected Trees | \$50 |
| Horticulture | Cemeteries | Landscaping | Remove Infected Trees | \$50 |
| Horticulture | Cemeteries | Landscaping | Tree Removal due to European Spruce Bark Beetle | \$31 |
| Horticulture | Normandy American Cemetery | Landscaping | Replace the hedges on the southside of the cemetery | \$30 |
| Horticulture | Sicily-Rome American Cemetery | Landscaping | Remove Trees and Install Root Barriers | \$25 |
| | | | | \$4,786 |

| Program | Location | Project Type | Project Name | Estimate |
|------------------------|----------|---------------------|---|----------------|
| Information Technology | HQ | IT Support Services | Deploy Wi-Fi Service and Network Capabilities in Cemeteries (cyclical, every 3 years) | \$1,000 |
| Information Technology | HQ | Equipment | Establish a lifecycle hardware replacement for the network appliances | \$339 |
| Information Technology | HQ | Equipment | Establish a lifecycle hardware replacement for the network appliances | \$312 |
| Information Technology | HQ | IT Support Services | eTMS option year 1 | \$30 |
| | | | | \$1,681 |

TOTAL FY 2029 **\$23,502**

ABMC FY 2030 Project List

in thousands \$

| Program | Location | Project Type | Project Name | Estimate |
|-----------------------|--|---|---|----------|
| Facilities Management | Brittany American Cemetery | Construction – Improvements/Renovations | Replace Chapel roof rain gutters & downspouts | \$150 |
| Facilities Management | Epinal American Cemetery | Major Repairs And Renovations | Replace asphalt around monument | \$160 |
| Facilities Management | Rhone American Cemetery | Major Repairs And Renovations | Re-pave or clean walkways in the cemetery proper and at entrance | \$500 |
| Facilities Management | Lorraine American Cemetery | Major Repairs And Renovations | Chapel cleaning | \$150 |
| Facilities Management | Rhone American Cemetery | Studies, Analyses, And Evaluations | Masonry study to clean chapel face and Wall of the Missing | \$400 |
| Facilities Management | Lafayette Escadrille Memorial Cemetery | Construction – Improvements/Renovations | LEMC Monument design and Install handrail leading to and from the Crypt | \$120 |
| Facilities Management | Henri-Chapelle American Cemetery | Construction – Improvements/Renovations | Roof replacement of Pumping station and Colonnades, Map room and Chapel | \$50 |
| Facilities Management | Sicily-Rome American Cemetery | Construction – Improvements/Renovations | Add Handrail and Protective Rail | \$30 |
| Facilities Management | Pointe du Hoc Ranger Monument | Major Repairs And Renovations | Repair on the cliff enforcement | \$300 |
| Facilities Management | Bellicourt American Monument | Major Repairs And Renovations | Monument cleaning | \$300 |
| Facilities Management | North Africa American Cemetery | Construction – Improvements/Renovations | Clean/repair burial plot perimeter wall stonework - Cyclical, every 7 years | \$30 |
| Facilities Management | North Africa American Cemetery | Major Repairs And Renovations | Rejoint Memorial Court & Chapel - Cyclical, every 7 years | \$30 |

| | | | | |
|-----------------------|--|---|---|-------|
| Facilities Management | Henri-Chapelle American Cemetery | Major Repairs And Renovations | Repave cemetery paths and parking areas | \$300 |
| Facilities Management | Luxembourg American Cemetery | Major Repairs And Renovations | Fountain Renovations | \$80 |
| Facilities Management | Lafayette Escadrille Memorial Cemetery | Construction – Improvements/Renovations | Treat the rebar of the concrete in the crawl space against rust, plaster and add mechanical ventilation | \$250 |
| Facilities Management | Montfaucon American Monument | Major Repairs And Renovations | Repointing and cleaning of the tower | \$200 |
| Facilities Management | Suresnes American Cemetery | Major Repairs And Renovations | SUAC Pathways resurfacing | \$100 |
| Facilities Management | Sicily-Rome American Cemetery | Major Repairs And Renovations | Renovation copper light fixtures and eagle light fixtures | \$15 |
| Facilities Management | Bellicourt American Monument | Major Repairs And Renovations | Orientation table behind the monument, the compass | \$150 |
| Facilities Management | Luxembourg American Cemetery | Major Repairs And Renovations | Chapel Gold leafing | \$50 |
| Facilities Management | North Africa American Cemetery | Major Repairs And Renovations | Chapel stone repair and replacement (at height) | \$15 |
| Facilities Management | Epinal American Cemetery | Major Repairs And Renovations | Replace stones at base of flagpole | \$35 |
| Facilities Management | North Africa American Cemetery | Construction – Improvements/Renovations | Memorial Court Roof | \$100 |
| Facilities Management | Sicily-Rome American Cemetery | Construction – Improvements/Renovations | Replace Metal Rail | \$10 |
| Facilities Management | Bellicourt American Monument | Major Repairs And Renovations | Stone replacement and repointing | \$100 |
| Facilities Management | Cantigny American Monument | Major Repairs And Renovations | Major stone cleaning and stone replacing/repointing of the monument | \$100 |

| | | | | |
|-----------------------|--------------------------------------|---|--|---------|
| Facilities Management | Sommepey American Monument | Major Repairs And Renovations | Repointing and cleaning of the monument elevation | \$100 |
| Facilities Management | North Africa American Cemetery | Construction – Improvements/Renovations | Chapel Roof | \$80 |
| Facilities Management | Naval Monument at Brest | Major Repairs And Renovations | General cleaning and restoration of the Brest Naval Monument lower tower base wall | \$80 |
| Facilities Management | Lorraine American Cemetery | Major Repairs And Renovations | Renovation/cleaning or study of all battle maps | \$60 |
| Facilities Management | Oise-Aisne American Cemetery | Studies, Analyses, And Evaluations | Study for dehumidification in the chapel | \$20 |
| Facilities Management | Suresnes American Cemetery | Studies, Analyses, And Evaluations | Study to replace storm drainage system. | \$50 |
| Facilities Management | Naval Monument at Brest | Major Repairs And Renovations | Replace windows in Brest Naval Monument tower | \$40 |
| Facilities Management | Chateau-Thierry Monument | Major Repairs And Renovations | Replace Rusty Pipes - CTVC | \$30 |
| Facilities Management | Lorraine American Cemetery | Studies, Analyses, And Evaluations | Study for dehumidification in the chapel | \$10 |
| Facilities Management | Suresnes American Cemetery | Major Repairs And Renovations | Guild 3 Chapel Light fixtures | \$15 |
| Facilities Management | Tours American Monument | Construction – Improvements/Renovations | Install remote access security cameras (Live-cams) | \$25 |
| Facilities Management | North Africa American Cemetery | Major Repairs And Renovations | Tile at the Chapel under windows | \$5 |
| Facilities Management | Souilly Marker-1st Army Headquarters | Major Repairs And Renovations | Cleaning the plaque | \$5 |
| Facilities Management | Corozal American Cemetery | Construction – Improvements/Renovations | Visitor Center Renovation | \$1,200 |

| | | | | |
|-----------------------|--|---|--|---------|
| Facilities Management | North Africa American Cemetery | Construction – Improvements/Renovations | Identify US/European contractors for noble material work - Cyclical, every 7 years | \$100 |
| Facilities Management | North Africa American Cemetery | Major Repairs And Renovations | Clean historical stonework - Cyclical, every 7 years | \$80 |
| Facilities Management | North Africa American Cemetery | Major Repairs And Renovations | Clean historical stonework - Cyclical, every 7 years | \$80 |
| Facilities Management | North Africa American Cemetery | Construction – New | Demolish and Construct new quarters & garage or Renovate current quarters | \$700 |
| Facilities Management | Cabanatuan American Memorial | Major Repairs And Renovations | Replace the tiles at Memorial Pavement. | \$50 |
| Facilities Management | Ardennes American Cemetery | Major Repairs And Renovations | Connect ARAC Septic Systems to City of Neupre | \$1,200 |
| Facilities Management | North Africa American Cemetery | Major Repairs And Renovations | Restore Eisenhower Quote (Admin Bldg) | \$60 |
| Facilities Management | Ardennes American Cemetery | Construction – Improvements/Renovations | Compost Building Roof Replacement | \$330 |
| Facilities Management | North Africa American Cemetery | Major Repairs And Renovations | Clean/repair burial plot perimeter wall stonework - Cyclical, every 7 years | \$30 |
| Facilities Management | North Africa American Cemetery | Major Repairs And Renovations | Rejoint Memorial Court & Chapel - Cyclical, every 7 years | \$30 |
| Facilities Management | Lafayette Escadrille Memorial Cemetery | Major Repairs And Renovations | Visitor building rain gutters, redesign the overhang | \$150 |
| Facilities Management | North Africa American Cemetery | Construction – Improvements/Renovations | Clean/repair burial plot perimeter wall stonework - Cyclical, every 7 years | \$30 |
| Facilities Management | Sicily-Rome American Cemetery | Construction – Improvements/Renovations | Roofing/Sky lights VC | \$30 |

| | | | | |
|-----------------------|--|---|--|---------|
| Facilities Management | Clark Veterans Cemetery | Major Repairs And Renovations | Replace the flagpole with 2 flagpoles. | \$25 |
| Facilities Management | Brittany American Cemetery | Construction – Improvements/Renovations | Replace visitor bldg. windows & entrance doors | \$70 |
| Facilities Management | Aisne-Marne American Cemetery | Construction – New | New Garage | \$350 |
| Facilities Management | North Africa American Cemetery | Major Repairs And Renovations | Repair of NOK room window mechanisms | \$20 |
| Facilities Management | North Africa American Cemetery | Construction – Improvements/Renovations | Design Rue Roosevelt renovation | \$200 |
| Facilities Management | Ardennes American Cemetery | Studies, Analyses, And Evaluations | Storm Drainage Site Survey | \$250 |
| Facilities Management | Lafayette Escadrille Memorial Cemetery | Major Repairs And Renovations | LEMC Roads and pathways resurfacing | \$1,200 |
| Facilities Management | Sicily-Rome American Cemetery | Major Repairs And Renovations | Permeable retention/detention ponds | \$300 |
| Facilities Management | Ardennes American Cemetery | Construction – Improvements/Renovations | Enclose Area Between Refectory and Main Equip Storage Bldg | \$75 |
| Facilities Management | Aisne-Marne American Cemetery | Construction – Improvements/Renovations | Renovate Wash Rack | \$200 |
| Facilities Management | Normandy American Cemetery | Major Repairs And Renovations | Flow of traffic modification | \$2,400 |
| Facilities Management | Aisne-Marne American Cemetery | Major Repairs And Renovations | New Heating Systems | \$180 |
| Facilities Management | Sicily-Rome American Cemetery | Major Repairs And Renovations | Repaint of Quarters | \$100 |
| Facilities Management | Brittany American Cemetery | Major Repairs And Renovations | Grid energy installation | \$150 |
| Facilities Management | Lafayette Escadrille Memorial Cemetery | Construction – New | LEMC Construction of a Service Area Garage / Maintenance building. | \$1,100 |

| | | | | |
|-----------------------|--|---|--|-------|
| Facilities Management | Henri-Chapelle American Cemetery | Studies, Analyses, And Evaluations | Study, design and construct Visitor's center with office | \$750 |
| Facilities Management | Flanders Field American Cemetery | Construction – Improvements/Renovations | VC cladding replacement | \$20 |
| Facilities Management | Ardennes American Cemetery | Major Repairs And Renovations | Replace/Upgrade Site Heating Systems | \$200 |
| Facilities Management | Lafayette Escadrille Memorial Cemetery | Construction – Improvements/Renovations | LEMC VC Fabrication and installation of steps leading from VC | \$20 |
| Facilities Management | Lafayette Escadrille Memorial Cemetery | Construction – Improvements/Renovations | LEMC VC Installation of veranda over steps leading to the cellar | \$20 |
| Facilities Management | Epinal American Cemetery | Major Repairs And Renovations | Re-asphalt from entrance to visitors parking | \$400 |
| Facilities Management | Aisne-Marne American Cemetery | Construction – Improvements/Renovations | Mezzanine - ZT | \$100 |
| Facilities Management | North Africa American Cemetery | Construction – Improvements/Renovations | Construct covered staff parking and pump shed roof extension (to be tied with P01257) | \$60 |
| Facilities Management | Somme American Cemetery | Major Repairs And Renovations | Heating system update | \$60 |
| Facilities Management | Sicily-Rome American Cemetery | Major Repairs And Renovations | Replace Floors in Quarters | \$50 |
| Facilities Management | Ardennes American Cemetery | Major Repairs And Renovations | Refurbishment of Office Hardwood Flooring | \$30 |
| Facilities Management | Lafayette Escadrille Memorial Cemetery | Construction – New | LEMC Fabrication and installation of Educational pavilion to greet groups of visitors. | \$480 |
| Facilities Management | Henri-Chapelle American Cemetery | Construction – New | Build mason work station | \$50 |
| Facilities Management | Brookwood American Cemetery | Construction – Improvements/Renovations | Fence around the site | \$485 |

| | | | | |
|-----------------------|--|---|--|-------|
| Facilities Management | Rhone American Cemetery | Construction – Improvements/Renovations | Repair/New restroom facility | \$300 |
| Facilities Management | North Africa American Cemetery | Construction – New | Construct aggregate storage shed | \$30 |
| Facilities Management | North Africa American Cemetery | Major Repairs And Renovations | Repaint All Buildings | \$30 |
| Facilities Management | Lorraine American Cemetery | Construction – Improvements/Renovations | Second Floor of both homes need renovation. | \$100 |
| Facilities Management | Henri-Chapelle American Cemetery | Construction – Improvements/Renovations | Rehabilitate Garage | \$80 |
| Facilities Management | Aisne-Marne American Cemetery | Construction – Improvements/Renovations | Convert Garage into Conference Room | \$45 |
| Facilities Management | Brookwood American Cemetery | Construction – Improvements/Renovations | Office renovation and conversion of loft space | \$150 |
| Facilities Management | Lafayette Escadrille Memorial Cemetery | Construction – Improvements/Renovations | LEMC VC Basement renovation to address humidity issues and make the space useable. | \$80 |
| Facilities Management | Lorraine American Cemetery | Construction – Improvements/Renovations | Demolition of the old service area | \$80 |
| Facilities Management | Epinal American Cemetery | Construction – Improvements/Renovations | Replace tin roof in office building | \$60 |
| Facilities Management | North Africa American Cemetery | Construction – Improvements/Renovations | Retaining wall inspections and repair & genertator building | \$450 |
| Facilities Management | Ardennes American Cemetery | Major Repairs And Renovations | Rejuvenation of the Site's Asphalt Roadways | \$30 |
| Facilities Management | Ardennes American Cemetery | Major Repairs And Renovations | Rejuvenation of the Main and Service Area Gates | \$30 |
| Facilities Management | North Africa American Cemetery | Construction – Improvements/Renovations | Repair/Restore/Reseal of irrigation reservoir roof | \$20 |
| Facilities Management | Henri-Chapelle American Cemetery | Construction – New | Construct a training room on second floor of garage | \$50 |

| | | | | |
|-----------------------|--|---|---|-------|
| Facilities Management | Cambridge American Cemetery | Major Repairs And Renovations | Replace elevated walkways to the VC | \$400 |
| Facilities Management | North Africa American Cemetery | Construction – New | Generator Building | \$150 |
| Facilities Management | Bellicourt American Monument | Construction – Improvements/Renovations | Bring power and water to the monument | \$500 |
| Facilities Management | North Africa American Cemetery | Construction – Improvements/Renovations | Replace meadow fence (external property) | \$45 |
| Facilities Management | Brittany American Cemetery | Major Repairs And Renovations | Repave main entrance asphalt roadway and visitors' parking lot | \$80 |
| Facilities Management | Brookwood American Cemetery | Major Repairs And Renovations | Road Resurfacing | \$150 |
| Facilities Management | Bellicourt American Monument | Construction – Improvements/Renovations | Rehabilitate the existing building | \$100 |
| Facilities Management | Luxembourg American Cemetery | Construction – Improvements/Renovations | Green Waste container installation | \$80 |
| Facilities Management | Epinal American Cemetery | Construction – Improvements/Renovations | Pour foundation along perimeter wall and add blocks up to wire fence | \$75 |
| Facilities Management | Florence American Cemetery | Major Repairs And Renovations | Replace waterproofing of the bridge under the road pavers. | \$200 |
| Facilities Management | Henri-Chapelle American Cemetery | Construction – Improvements/Renovations | Install four stone benches at entrance of cemetery | \$25 |
| Facilities Management | Corozal American Cemetery | Construction – New | Public Restrooms | \$40 |
| Facilities Management | Corozal American Cemetery | Construction – Improvements/Renovations | Service Area Maintenance | \$40 |
| Facilities Management | Lafayette Escadrille Memorial Cemetery | Construction – Improvements/Renovations | LEMC Renovation of Back Gate of the site | \$200 |
| Facilities Management | Lafayette Escadrille Memorial Cemetery | Construction – Improvements/Renovations | LEMC creation of new narrow pathway leading from the memorial to the VC | \$60 |

| | | | | |
|-----------------------|--------------------------------|---|---|-------|
| Facilities Management | North Africa American Cemetery | Construction – Improvements/Renovations | Wall between walk and cemetery disintegrating | \$100 |
| Facilities Management | Ardennes American Cemetery | Major Repairs And Renovations | Assorted Masonry Works | \$25 |
| Facilities Management | Rhone American Cemetery | Construction – Improvements/Renovations | Wheelchair accessible ramp to chapel level | \$150 |
| Facilities Management | Montfaucon American Monument | Major Repairs And Renovations | Placeholder: Maintenance of the bunker #2 to the left of the memorial | \$90 |
| Facilities Management | Lorraine American Cemetery | Drainage and Irrigation | Redo/rethink Belvedere drainage | \$30 |
| Facilities Management | Normandy American Cemetery | Construction – Improvements/Renovations | Realignment of the bronze gates of Garden of the Missing | \$75 |
| Facilities Management | Suresnes American Cemetery | Construction – Improvements/Renovations | SUAC Service area parking extension (Acquire land rights) | \$120 |
| Facilities Management | Brookwood American Cemetery | Construction – Improvements/Renovations | Cemetery Parking and Weather Protection to Cars | \$50 |
| Facilities Management | Corozal American Cemetery | Construction – Improvements/Renovations | Memorial Hill Plaza | \$50 |
| Facilities Management | Chateau-Thierry Monument | Construction – Improvements/Renovations | Traffic calming measures | \$50 |
| Facilities Management | Montfaucon American Monument | Major Repairs And Renovations | Resurfacing of asphalt parking | \$50 |
| Facilities Management | Rhone American Cemetery | Major Repairs And Renovations | Illumination installation (study complete) | \$50 |
| Facilities Management | Chateau-Thierry Monument | Major Repairs And Renovations | Joint for the curb stones on the parking area | \$25 |
| Facilities Management | Normandy American Cemetery | Construction – Improvements/Renovations | Last phase of parking lot project: signage study | \$20 |
| Facilities Management | Bellicourt American Monument | Construction – Improvements/Renovations | Waste water discharge system | \$20 |

| | | | | |
|-----------------------|--|---|--|-----------------|
| Facilities Management | Lafayette Escadrille Memorial Cemetery | Construction – New | LEMC Fabrication and placement of footbridge | \$10 |
| Facilities Management | Cabanatuan American Memorial | Construction – Improvements/Renovations | Move back the front fence and gate f the monument. | \$100 |
| Facilities Management | Clark Veterans Cemetery | Major Repairs And Renovations | Repaint the perimeter steel fence | \$40 |
| | | | | \$22,395 |

TOTAL FY 2030 \$22,395