

Where do you grow rice?



By PRiDe project

July, 2015

1. Site Selection

Swamp ✓

Lower land ✓

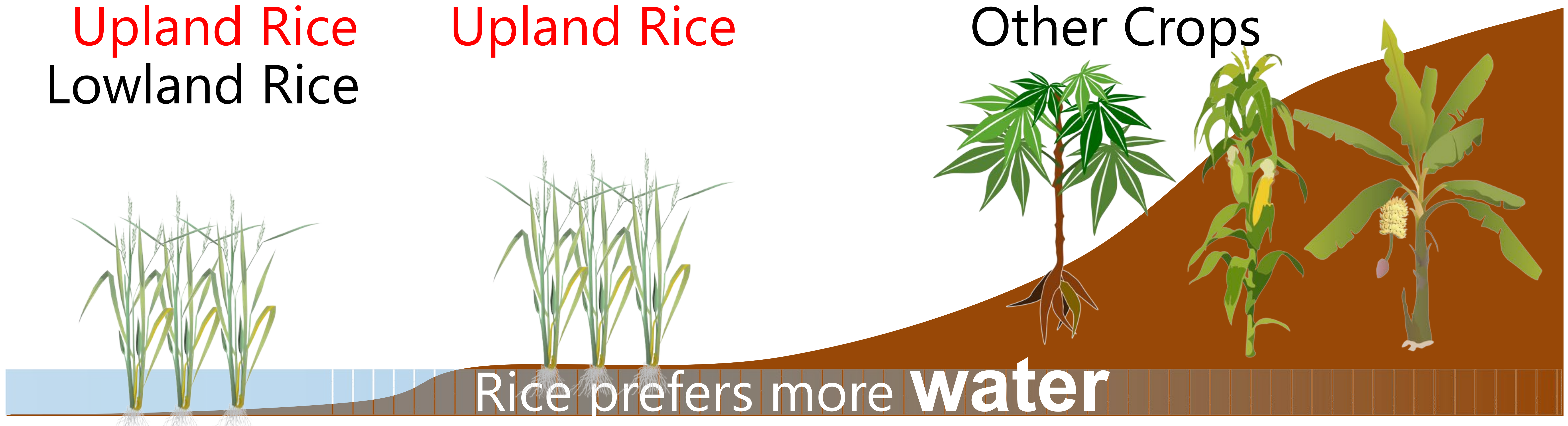
Slope

Upland

Upland Rice
Lowland Rice

Upland Rice

Other Crops



2. Yield difference by where to plant upland rice

More Water
More Yield

12 sacks/Acre



8 sacks/Acre



4 sacks/Acre



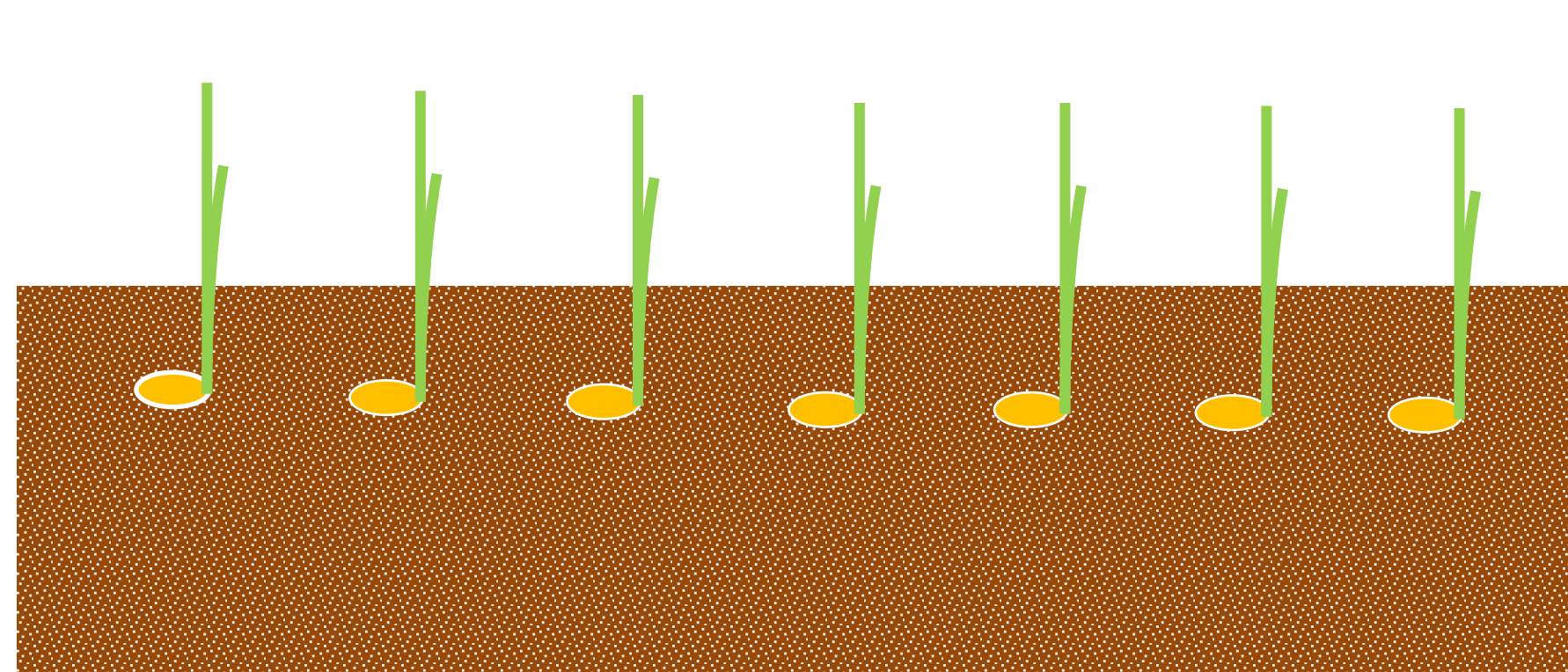
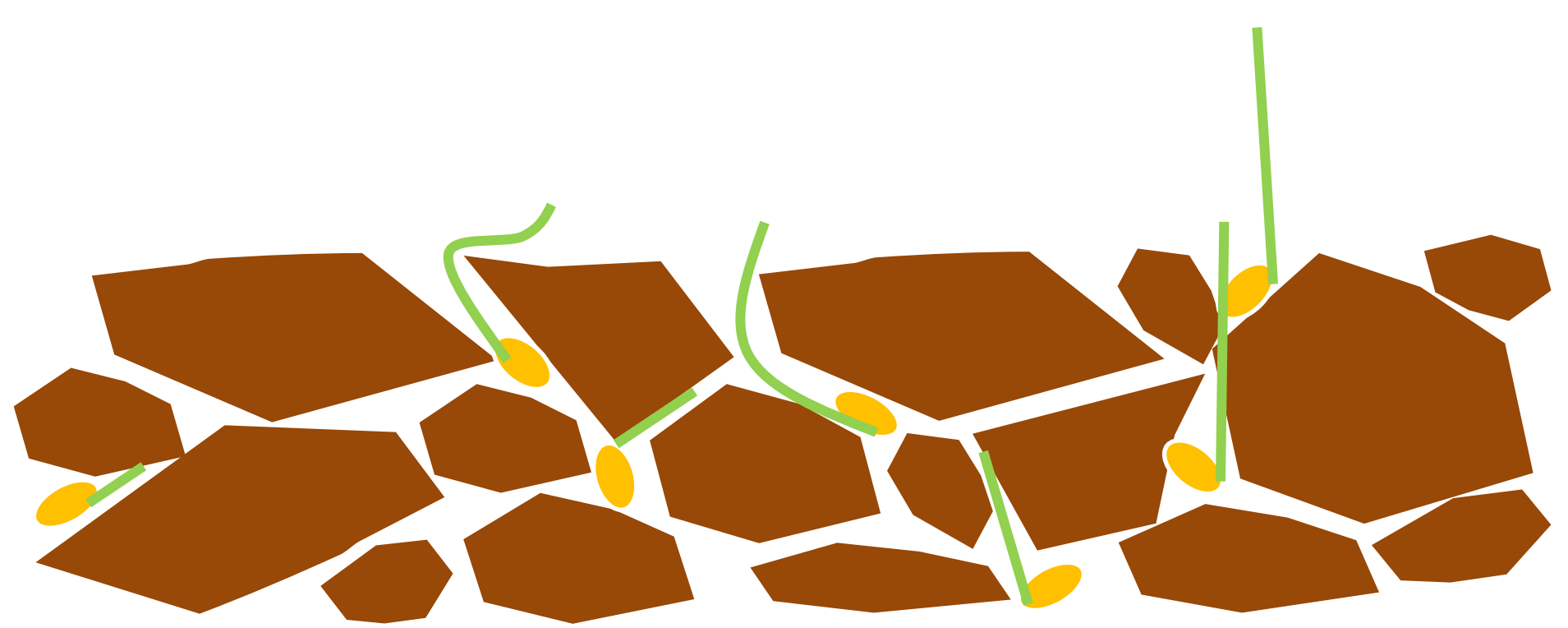
Poor Water
Poor Yield

3. Field Preparation



Rice seeds are small

Fine soil helps
better emergence



Seed Multiplication

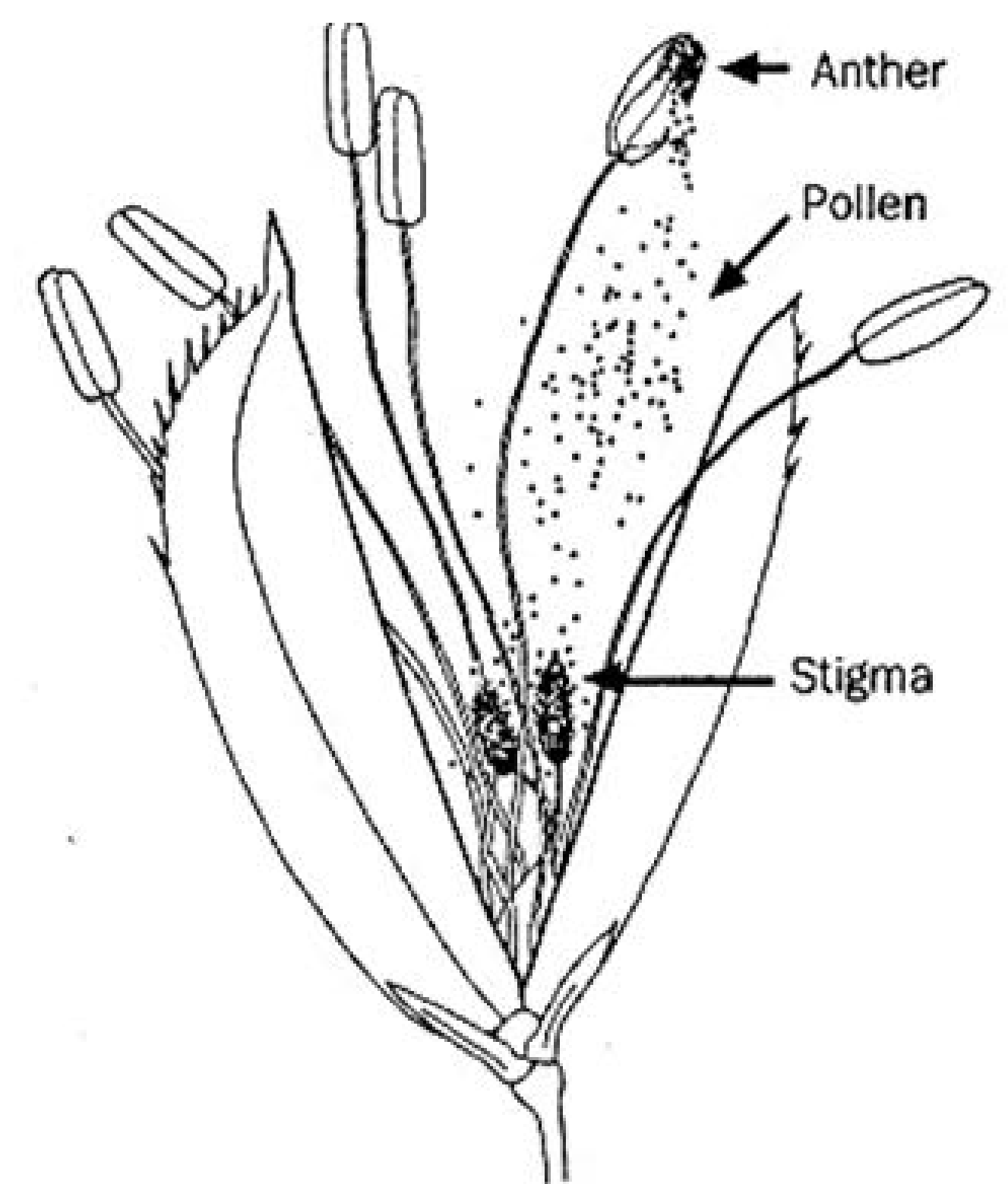
1. Rice seed can be produced by farmers

You **do not have to buy** rice seeds again & again

You can **keep the purity** of your rice seeds by your self



Rice Flower



Self Pollination

1st Season

1 kg of seed → plant in 200 m²
50 kg of seed can be harvested

2nd season

50 kg of seed → plant in 2.5 Acre
2,500 kg of rice can be harvested



1. How can we get pure seeds?

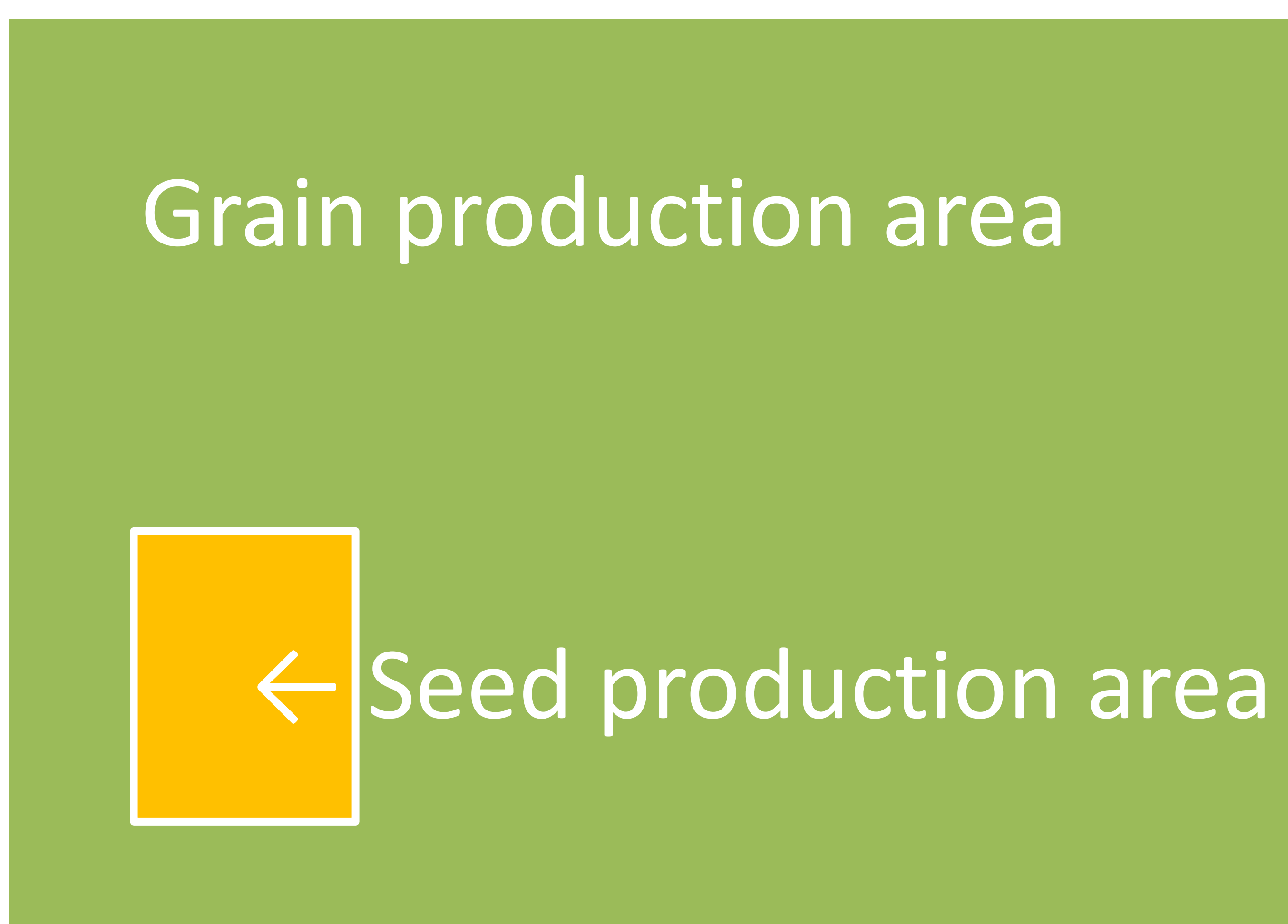
If seed is not pure...

1. Different maturity period → You cannot harvest once
2. Different grain size/shape → Milling recovery will be decreased

To keep rice seed purity

Step1. Select seed plot in your field (**100m² for next season 1 Acre**)

Step2. **Remove off-types** from seed plot



Grain Color



Not Hairy



Hairy



Maturity Period



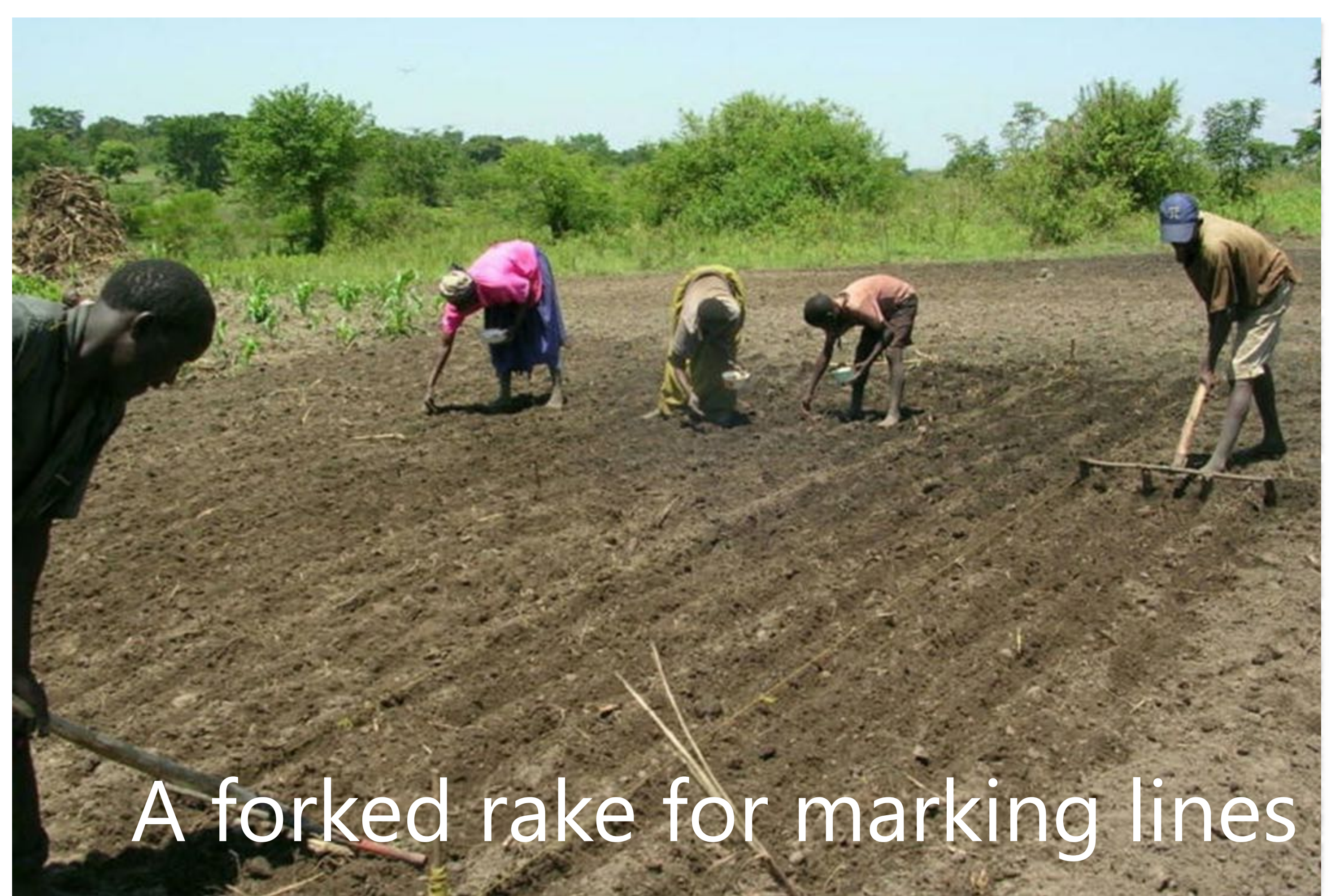
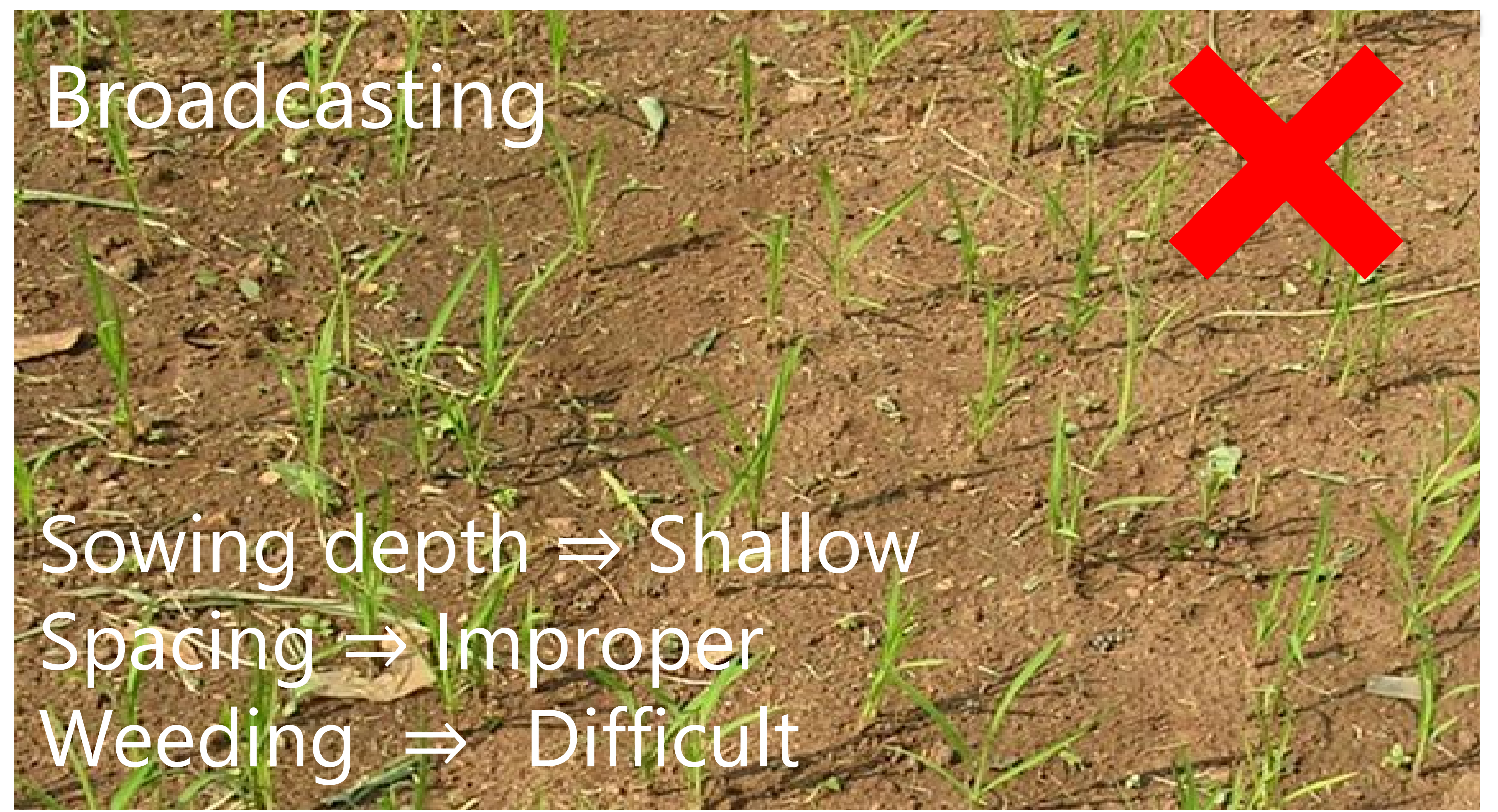
Fat



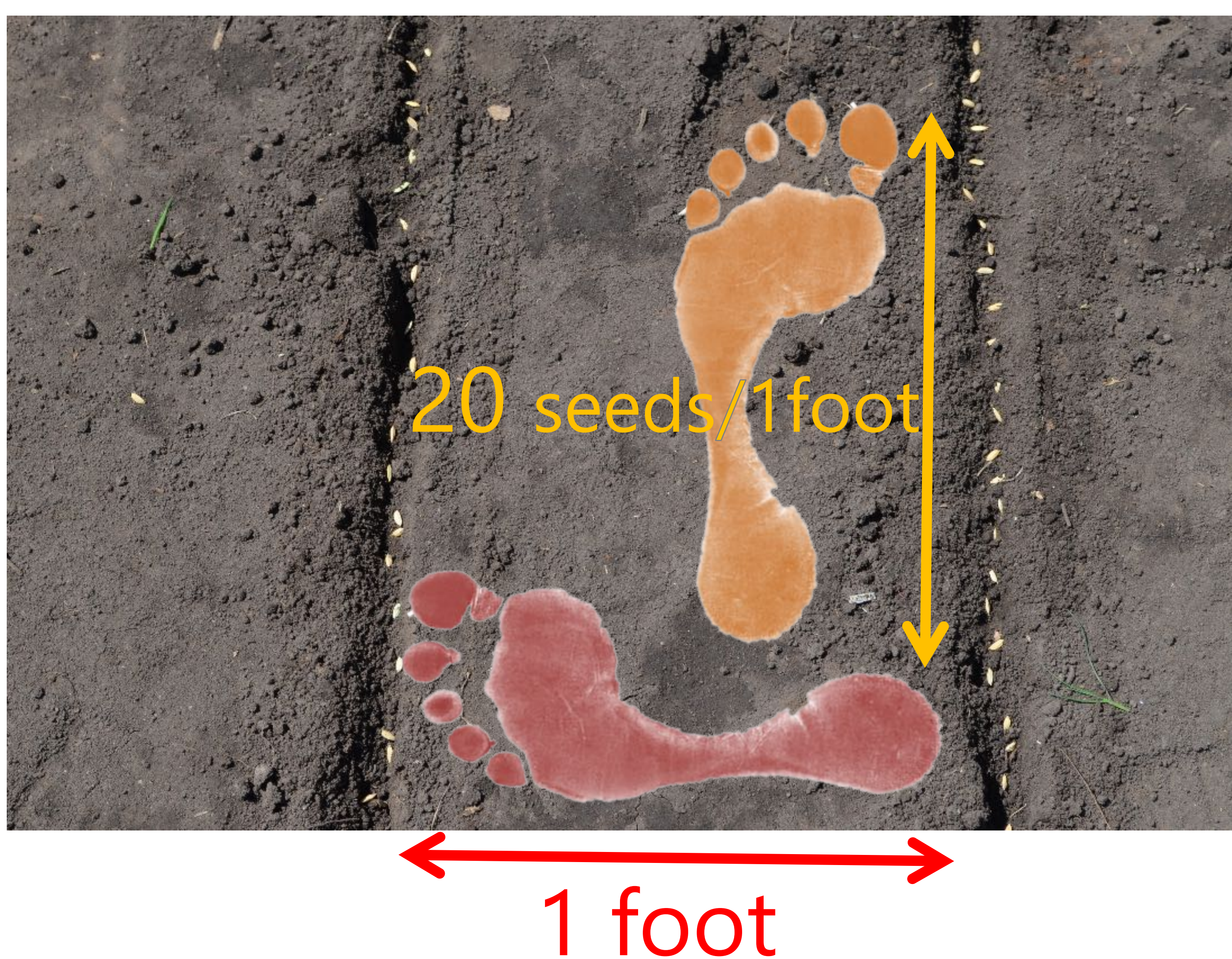
Slim

How to sow rice seeds

1. Sowing Methods



2. Sowing space and depth



Between the lines = 30cm ≅ 1 foot
In the line = 20 seeds/30cm(1 foot)
20kg/acre is the optimum seed rate

0 - 2 cm = Birds attack, Drought
2 - 4 cm = The optimum sowing depth
4 - 5 cm = Poor Emergence

Is weeding important?



By PRiDe project

July, 2015

1. Why do we have to weed?



Weeds steal sunshine, water & soil nutrition from Rice



Low rice yield = Less Income
Weeds are stealing your money

These are 3 important factors for rice

2. When & How many times do we weed?

Weeding should be done at least **twice** at **3 & 6 weeks** after emergence



No Weeding



One Times (at 3 weeks)



Two Times (at 3 & 6 weeks)



Three Times (at 3, 6 & 9 weeks)

More weeding brings you more yield and **more income**

Post harvest Handling



By PRiDe project

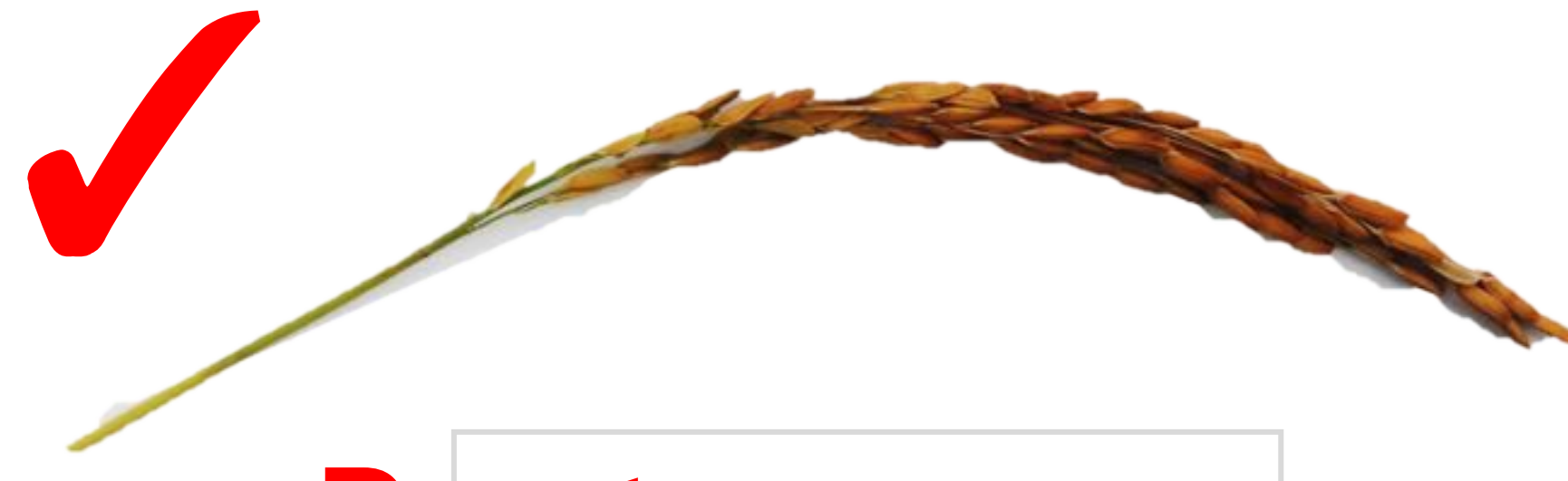
July, 2015

1. Harvest timing



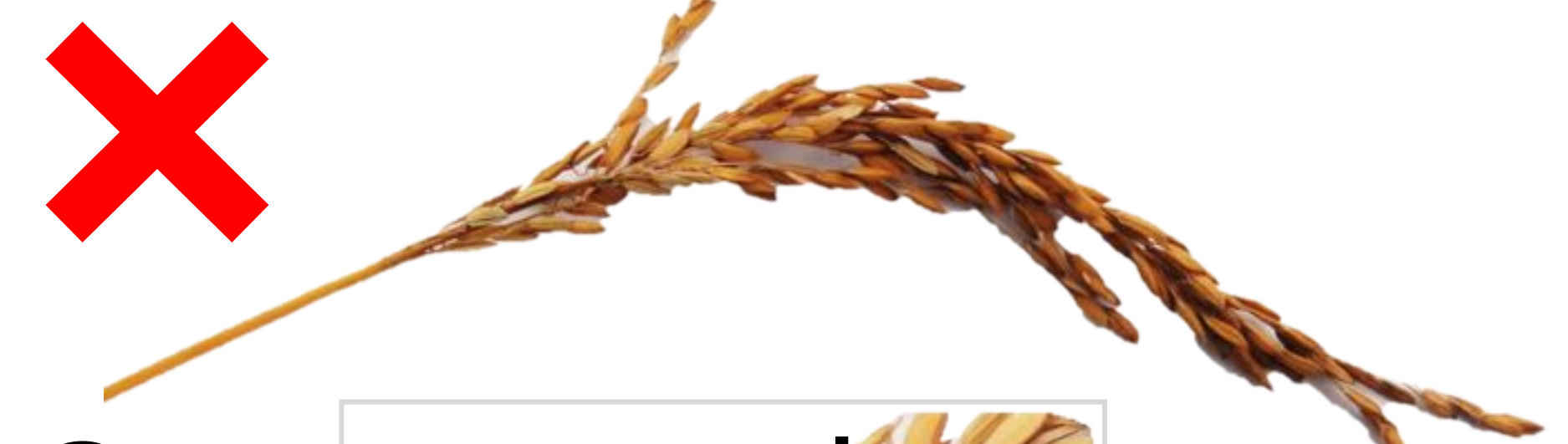
Immature

Milling loss



Best

80-85% = straw color



Over stayed

Grain cracks, falls in the field
Bird attack risk

2. Harvesting method & Threshing



Cutting bottom is recommended
for easier threshing



Threshing machine can reduce
threshing time & threshing losses



2. Harvesting method & Threshing



Low price

High price

Rice quality can be improved by farmers



Fermentation
makes rice
quality poor



Mixing different
varieties gives
you poor
milling recovery



Thin



Thick

Drying **slowly** with thick layer and frequent agitation



Agitation



Let us use tarpaulin to avoid stones in rice