



Food and Agriculture Organization  
of the United Nations

# The Hand-in-Hand Initiative

Progress Update

**Máximo Torero**  
**Chief Economist**

FAO Regional Conference For Africa, Thirty-first Session  
27 October 2020

---

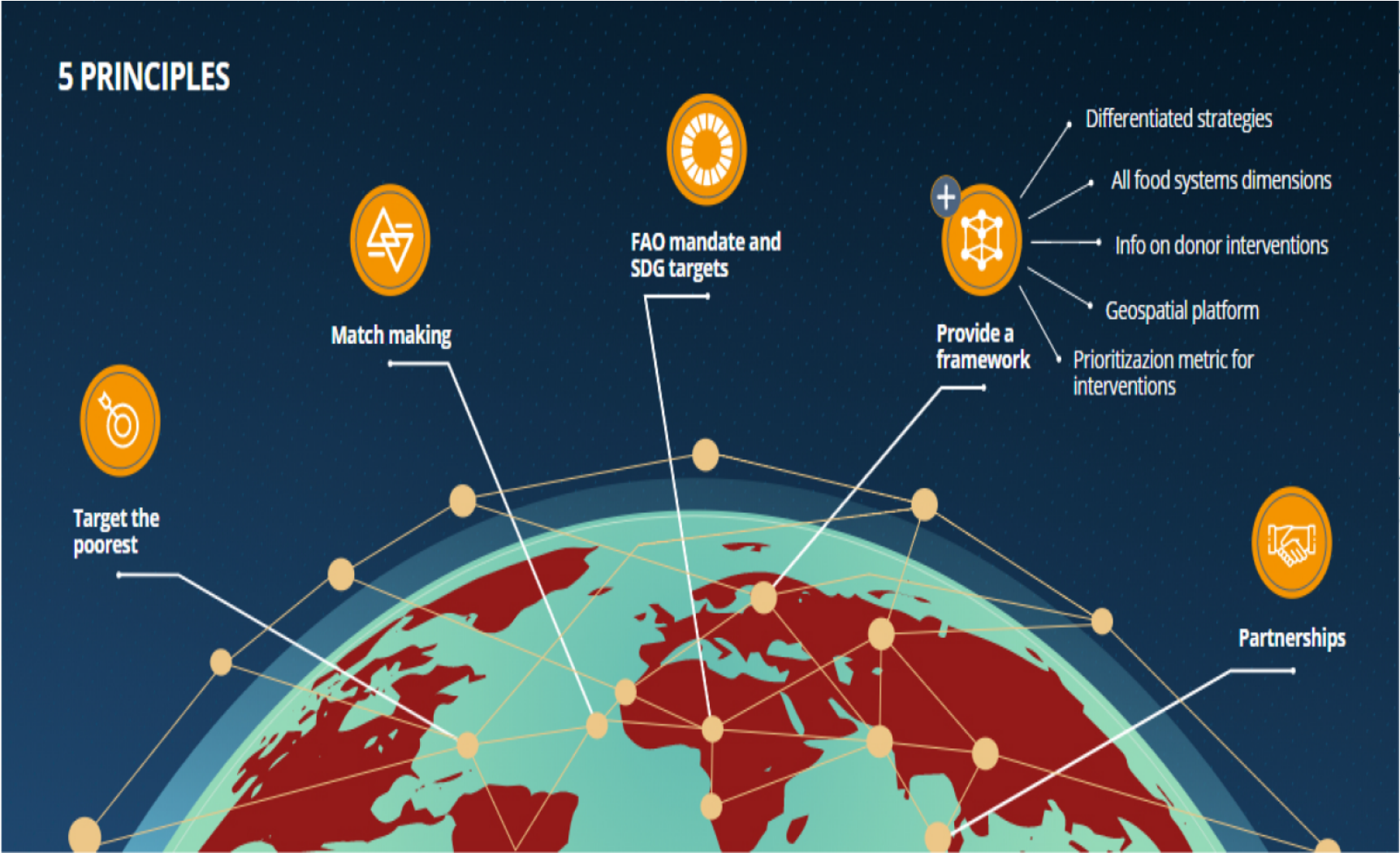
## **Hand-in-Hand Initiative**

**A new, holistic approach to support  
food and agriculture development**

---

# Guiding principles

for analytical framework



# Framework

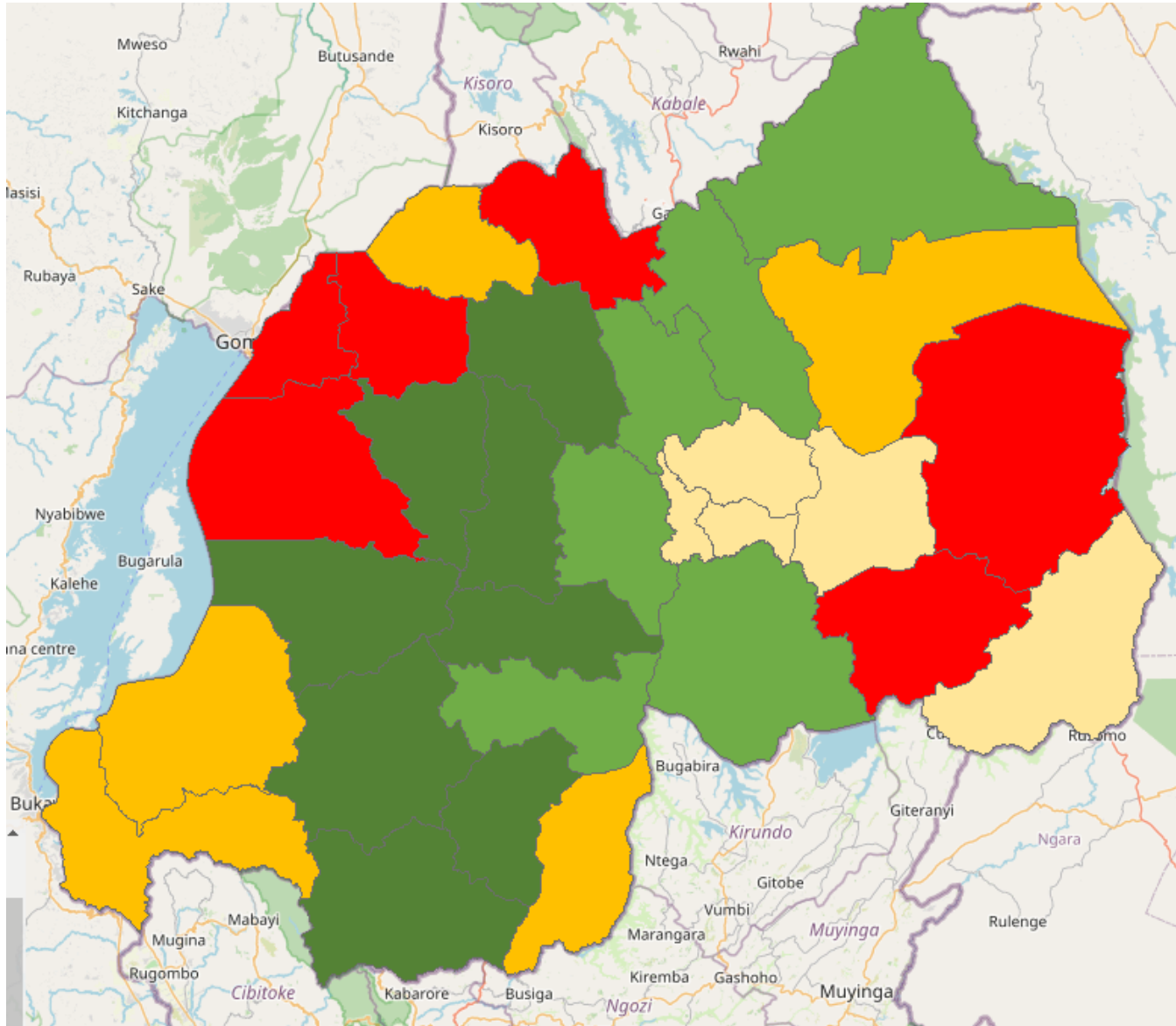
## Recall the initial objective

Low-potential and  
low-average efficiency

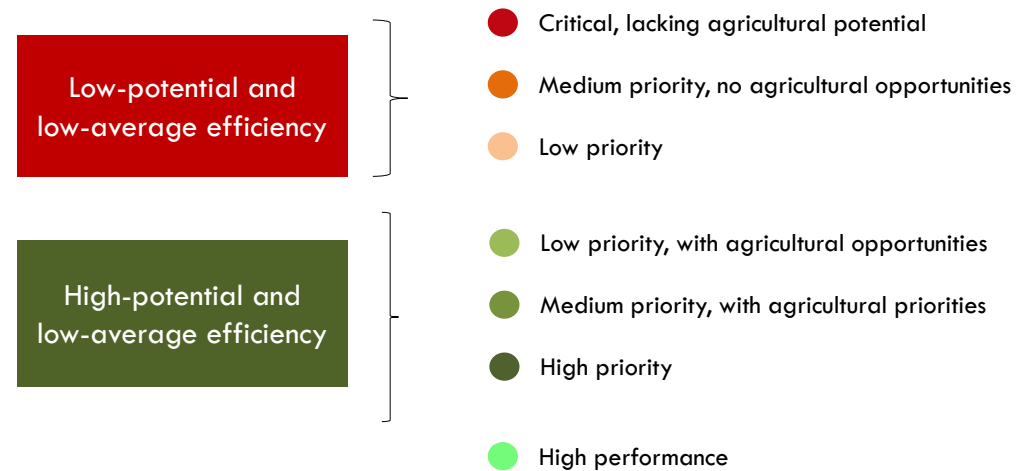
High-potential and  
low-average efficiency

- Critical, lacking agricultural potential
- Medium priority, no agricultural opportunities
- Low priority
- Low priority, with agricultural opportunities
- Medium priority, with agricultural priorities
- High priority
- High performance

# Framework



## Grouping diverse criteria into 7 micro-regions



# Framework

High priority



# Framework

## Opportunities to drive transformation

### Efficient Supply Chains

- 1. Inclusive supply chains.** Improve rural livelihoods for commercial smallholder farmers, SMEs.
- 2. Food chain improvement.** Efficiently process, store, transport food. Reduce losses, enhance nutrition.
- 3. Enabling policies.** Improve policies reducing distortions; improve incentives for private sector participation.

# Framework

## Opportunities to drive transformation

### Sustainability Standards & Practices

- 4. Climate-smart agriculture practices.** Ease pressure on natural resources.
- 5. Clear global standards.** Ensure efficient use of land, water, labor.

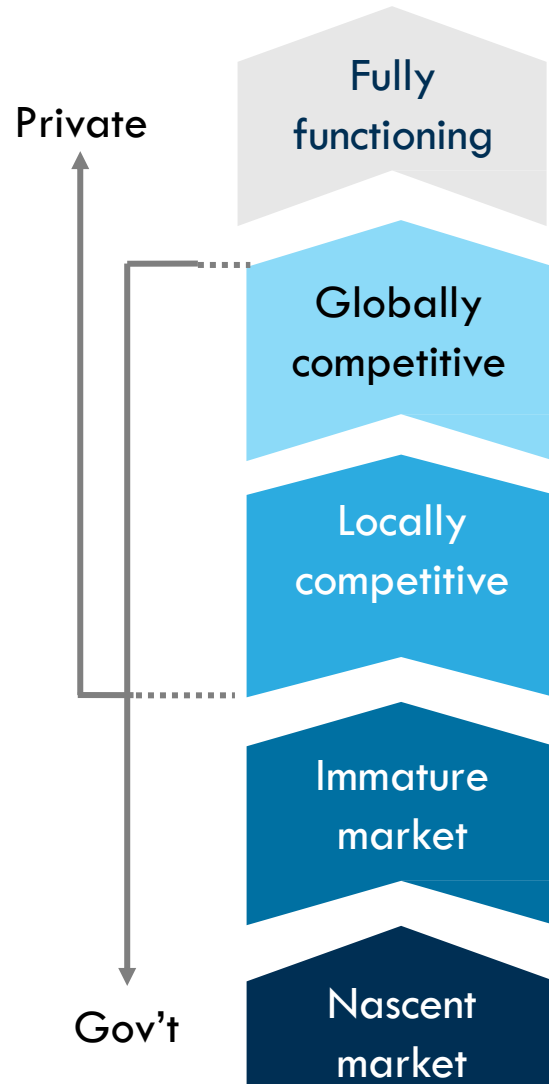
### Innovation & Technology

- 6. Technology improvements.** Increase yield, resource productivity, nutrition, traceability, disease control.
- 7. Business and financial model innovations.** Provide better products, services to farmers and value chain actors.



# Framework

## Market segmentation model for identifying interventions



- Globally competitive production
- Little government distortion
- Finance needs to adapt to agribusiness requirements
- Globally competitive production
- Existing policy distortions
- Players along the value chain have integrated operations
- Sector competitive on import parity basis
- Functioning domestic value chain
- Local processing to meet market conditions
- Limited infrastructure
- Unreliable links to the value chain
- Significant challenges accessing finance
- Challenging environment for value chain to develop



## Handshake

- Government request received
- FAO Country Support Task Force formed



## Country Teams

- FAOR
- Country focal point
- Sub-regional
- Regional
- HQ
- Investment Centre
- OER
- Additional country support

## Technical Cooperation Programme (TCP)

- Funds available
- TCP formulated
- TCP approved



## Situation Analysis

### BACKGROUND DOCUMENTS

- Reports collected
- IFI project loan reports collected

### DONOR MAPPING

- List of donors compiled
- Information on how and where the donors are active gathered
- Geospatially referenced donor mapping complete

### DATA ASSESSMENT

- Poverty/hunger maps collected
- Additional data layers for typologies selected
- Mapping of territories completed

### TYOLOGIES ANALYSIS

- Market assessment conducted
- Stochastic profitability frontier analysis conducted
- Typologies created



## Initial Assessment

- Target regions identified
- Field mission conducted
- Presentation given to FAO HIH core group



## Dialogue with Gov't

- Presentation given to the the Government and endorsement received
- The proposal is used to begin the process of developing the Program Investment Plan



## Partner Matchmaking

### NATIONAL, LOCAL

- Local government
- Producers, farmers' orgs, SMEs and others
- Local private sector
- Local financial institutions
- Civil society

### INTERNATIONAL

- Donors
- International financial institutions
- Private sector
- Civil society
- Research institutes
- UN agencies



## Executive Roundtable Consultations

- Plan for executive roundtable(s) agreed with the Government and partners
- Executive roundtable(s) completed



## Program Investment Plan (PIP)

- Draft comprehensive PIP completed — with funding, financing and in-kind commitments from all actors included
- PIP endorsed by the Government and all actors



## Dashboard Implementation

- Dashboard designed on basis of PIP
- Dashboard implemented on basis of PIP

## **Country Task Team**

To coordinate support  
across the programme

### **Composition of partners in countries**

- Governments
- Donors
- Private sector
- IFIs (WBG, IADB, AFDB)
- Academic institutions
- Civil society organizations

### **Composition of task forces of FAO**

- Country office lead
- Sub-regional office lead
- Regional office lead
- Investment centre
- HQ coordinator
- Poverty, hunger/malnutrition and crisis country leads (OER)
- Technical leads

# HIH Geospatial platform



- FAO partnered with leading technology companies and public data providers to build the platform, including:
  - Google
  - Google Earth Engine
  - IBM
  - World Bank
  - IFPRI
  - Gates Foundation
  - USAID
  - EU
  - Chinese Academy of Agricultural Sciences
  - Beijing Academy of Agricultural and Forest Sciences
  - IPCinfo
- “Training of trainers” taking place to meet the demand from Members to access the platform’s resources. Those trained will train other groups, and online modules will be developed.

# HIH Data Lab

- Uses unofficial, unstructured data, data science methods and access to remote sensing to validate and collect data
- 3 streams of work on the use of big data and data science
  - Text-mining techniques
  - Geospatial data science
  - Big data solutions (web scrapping, crowdsourcing, machine learning)
- The lab is also supporting COVID-19 response

The screenshot displays the FAO Data Lab website. At the top, there is a navigation menu with links for ABOUT, PRODUCTS, COLLABORATIONS, METHODS & AREAS OF WORK, and CONTACT. Below the menu is a large banner image with a news digest overlay. The main content area is titled 'DataLab products' and features a grid of six product cards: 'Social unrest analysis tool', 'Covid-19 impact analysis', 'Daily & monthly news digests', 'News search', 'Daily food prices', and 'Use of statistics in policy'. Below this is a section titled 'DataLab areas of work' with four cards: 'Filling gaps of statistical data', 'Analysis of (social) media', 'Analysis of legislation and policies', and 'Use of geo-spatial data in agriculture statistics'. Each card includes a representative image and a brief description of the product or area of work.

## Executive Roundtables

To bring everyone together to  
define priorities and gaps

- The Executive Roundtables engage stakeholders to identify ground-level issues and key impediments and formulate strategies to address constraints and gaps.
- The roundtables align the Hand-in-Hand Initiative's involvement with the national government's development priority and the UN Cooperative Framework.
- The knowledge gained from the roundtables is used by the **FAO Investment Center** to develop a **Programme Investment Plan** in consultation with the host government and its diverse partners.

# HIH Dashboard

## for Impact Evaluation

- The dashboard establishes whether countries are **on track and on target** to meet national targets for SDG 1 and SDG 2
- It will use a red-yellow-green scorecard system
  - **Red:** country is off track and off target to meet SDG1 and SDG2
  - **Yellow:** on track, but off target
  - **Green:** on track and on target. Example: Burkina Faso's target is to reduce the poverty rate from 43.7% to 21.7% by 2023. Currently, it has a green mark.
- The first benchmarks will be released in 2023

---

# Progress at a Glance

Jun – Oct 2020

---



# HIH Africa

- ❖ 11 Countries have given formal notice of desire to participate; several others actively considering participation
- ❖ Different entry points based on existing programming
- ❖ HIH principles apply in all countries, with commitment to:
  - ✓ Eradicating poverty and ending hunger,
  - ✓ Improved technical analysis and decision support,
  - ✓ Broad matchmaking approach to partnership development,
  - ✓ Commitment to mobilizing means of implementation, and
  - ✓ Implementation of dashboards across all HIH countries.

# Beneficiary countries

(as of 20 October 2020)

 Afghanistan 1	 Guinea-Bissau 11	 Pakistan 20
 Angola 2	 Haiti 12	 Papua New Guinea 21
 Bangladesh 3	 Honduras 13	 Peru 22
 Burkina Faso 4	 Kiribati 14	 Rwanda 23
 Cape Verde 5	 Lao PDR 15	 Solomon Islands 24
 Ecuador 6	 Mali 16	 Syria 25
 El Salvador 7	 Nepal 17	 Tajikistan 26
 Ethiopia 8	 Niger 18	 Tuvalu 27
 Gabon 9	 Nigeria 19	 Yemen 28
 Guatemala 10		 Zimbabwe 29

# The Hand-in-Hand Initiative

## Milestones

Country & FAO agree to work together



### Key outputs

Declaration of interest to work with FAO in HIH

FAO-led technical analysis



### Key outputs

- Geospatial typologies
- Baseline indicators
- └ Some b/l indicator data may be collected during program implementation

Country-led roundtables



### Key outputs

- Target markets
- Identification of bottlenecks
- Program for HIH territory, partners

Program investment analysis



### Key outputs

- Umbrella program
- Investment plan for the HIH partners
- HIH program dashboard

Program implementation & coordination



### Key outputs

- Actions
- Milestone tracking
- Troubleshooting
- Quarterly, annual reporting
- Communications

Impact report 2023



### Key outputs

- Platform-based analysis of key indicators
- Country-led 360° partnership review
- Evaluation reports to FAO Conference in 2023 and 2027

Impact report 2027

