

2

Foundations for Decision Making

Coordinating Lead Authors:

Roger N. Jones (Australia), Anand Patwardhan (India)

Lead Authors:

Stewart J. Cohen (Canada), Suraje Dessai (UK/Portugal), Annamaria Lammel (France), Robert J. Lempert (USA), M. Monirul Qader Mirza (Bangladesh/Canada), Hans von Storch (Germany)

Contributing Authors:

Werner Krauss (Germany), Johanna Wolf (Germany/Canada), Celeste Young (Australia)

Review Editors:

Rosina Bierbaum (USA), Nicholas King (South Africa)

Volunteer Chapter Scientist:

Pankaj Kumar (India/Japan)

This chapter should be cited as:

Jones, R.N., A. Patwardhan, S.J. Cohen, S. Dessai, A. Lammel, R.J. Lempert, M.M.Q. Mirza, and H. von Storch, 2014: Foundations for decision making. In: *Climate Change 2014: Impacts, Adaptation, and Vulnerability. Part A: Global and Sectoral Aspects. Contribution of Working Group II to the Fifth Assessment Report of the Intergovernmental Panel on Climate Change* [Field, C.B., V.R. Barros, D.J. Dokken, K.J. Mach, M.D. Mastrandrea, T.E. Bilir, M. Chatterjee, K.L. Ebi, Y.O. Estrada, R.C. Genova, B. Girma, E.S. Kissel, A.N. Levy, S. MacCracken, P.R. Mastrandrea, and L.L. White (eds.)]. Cambridge University Press, Cambridge, United Kingdom and New York, NY, USA, pp. 195-228.

Table of Contents

- Executive Summary 198**
- 2.1. Introduction and Key Concepts 199**
 - 2.1.1. Decision-Making Approaches in this Report 199
 - 2.1.2. Iterative Risk Management 200
 - 2.1.3. Decision Support 202
- 2.2. Contexts for Decision Making 203**
 - 2.2.1. Social Context 203
 - 2.2.1.1. Cultural Values and Determinants 203
 - 2.2.1.2. Psychology 204
 - 2.2.1.3. Language and Meaning 204
 - 2.2.1.4. Ethics 205
 - 2.2.2. Institutional Context 206
 - 2.2.2.1. Institutions 206
 - 2.2.2.2. Governance 207
- 2.3. Methods, Tools, and Processes for Climate-related Decisions 207**
 - 2.3.1. Treatment of Uncertainties 207
 - 2.3.2. Scenarios 208
 - 2.3.3. Evaluating Trade-offs and Multi-metric Valuation 208
 - 2.3.4. Learning, Review, and Reframing 209
- 2.4. Support for Climate-related Decisions 210**
 - 2.4.1. Climate Information and Services 210
 - Box 2-1. Managing Wicked Problems with Decision Support 211**
 - 2.4.1.1. Climate Services: History and Concepts 211
 - 2.4.1.2. Climate Services: Practices and Decision Support 212
 - 2.4.1.3. The Geo-political Dimension of Climate Services 212
 - 2.4.2. Assessing Impact, Adaptation, and Vulnerability on a Range of Scales 213
 - 2.4.2.1. Assessing Impacts 213
 - 2.4.2.2. Assessing Vulnerability, Risk, and Adaptive Capacity 214
 - 2.4.3. Climate-related Decisions in Practice 214
- 2.5. Linking Adaptation with Mitigation and Sustainable Development 216**
 - 2.5.1. Assessing Synergies and Trade-offs with Mitigation 216
 - 2.5.2. Linkage with Sustainable Development: Resilience 216
 - 2.5.3. Transformation: How Do We Make Decisions Involving Transformation? 217
- References 218**

Frequently Asked Questions

2.1:	What constitutes a good (climate) decision?	200
2.2:	Which is the best method for climate change decision making/assessing adaptation?	210
2.3:	Is climate change decision making different from other kinds of decision making?	216

Executive Summary

Decision support for impacts, adaptation, and vulnerability is expanding from science-driven linear methods to a wide range of methods drawing from many disciplines (*robust evidence, high agreement*). This chapter introduces new material from disciplines including behavioral science, ethics, and cultural and organizational theory, thus providing a broader perspective on climate change decision making. Previous assessment methods and policy advice have been framed by the assumption that better science will lead to better decisions. Extensive evidence from the decision sciences shows that while good scientific and technical information is necessary, it is not sufficient, and decisions require context-appropriate decision-support processes and tools (*robust evidence, high agreement*). There now exists a sufficiently rich set of available methods, tools, and processes to support effective climate impact, adaptation, and vulnerability (CIAV) decisions in a wide range of contexts (*medium evidence, medium agreement*), although they may not always be appropriately combined or readily accessible to decision makers. {2.1.1, 2.1.2, 2.1.3, 2.3}

Risk management provides a useful framework for most climate change decision making. Iterative risk management is most suitable in situations characterized by large uncertainties, long time frames, the potential for learning over time, and the influence of both climate as well as other socioeconomic and biophysical changes (*robust evidence, high agreement*). Complex decision-making contexts will ideally apply a broad definition of risk, address and manage relevant perceived risks, and assess the risks of a broad range of plausible future outcomes and alternative risk management actions (*robust evidence, medium agreement*). The resulting challenge is for people and organizations to apply CIAV decision-making processes in ways that address their specific aims. {2.1.2, 2.2.1, 2.3, 2.4.3}

Decision support is situated at the intersection of data provision, expert knowledge, and human decision making at a range of scales from the individual to the organization and institution. Decision support is defined as a set of processes intended to create the conditions for the production of decision-relevant information and its appropriate use. Such support is most effective when it is context-sensitive, taking account of the diversity of different types of decisions, decision processes, and constituencies (*robust evidence, high agreement*). Boundary organizations, including climate services, play an important role in climate change knowledge transfer and communication, including translation, engagement, and knowledge exchange (*medium evidence, high agreement*). {2.1.3, 2.2.1, 2.2, 2.3, 2.4.1, 2.4.2, 2.4.3}

Scenarios are a key tool for addressing uncertainty (*robust evidence, high agreement*). They can be divided into those that explore how futures may unfold under various drivers (problem exploration) and those that test how various interventions may play out (solution exploration). Historically, most scenarios used for CIAV assessments have been of the former type, though the latter are becoming more prevalent (*medium evidence, high agreement*). The new RCP scenario process can address both problem and solution framing in ways that previous IPCC scenarios have not been able to (*limited evidence, medium agreement*). {2.2.1.3, 2.3.2}

CIAV decision making involves ethical judgments expressed at a range of institutional scales; the resulting ethical judgements are a key part of risk governance (*robust evidence, medium agreement*). Recognition of local and indigenous knowledge and diverse stakeholder interests, values, and expectations is fundamental to building trust within decision-making processes (*robust evidence, high agreement*). {2.2.1.1, 2.2.1.2, 2.2.1.3, 2.2.1.4, 2.4, 2.4.1}

Climate services aim to make knowledge about climate accessible to a wide range of decision makers. In doing so they have to consider information supply, competing sources of knowledge, and user demand. Knowledge transfer is a negotiated process that takes a variety of cultural values, orientations, and alternative forms of knowledge into account (*medium evidence, high agreement*). {2.4.1, 2.4.2}

Climate change response can be linked with sustainable development through actions that enhance resilience, the capacity to change in order to maintain the same identity while also maintaining the capacity to adapt, learn, and transform. Mainstreamed adaptation, disaster risk management, and new types of governance and institutional arrangements are being studied for their potential to support the goal of enhanced resilience (*medium evidence, high agreement*). {2.5.2}

Transformational adaptation may be required if incremental adaptation proves insufficient (*medium evidence, high agreement*). This process may require changes in existing social structures, institutions, and values, which can be facilitated by iterative risk management and triple-loop learning that considers a situation and its drivers, along with the underlying frames and values that provide the situation context. {2.1.2, 2.5.3}

2.1. Introduction and Key Concepts

This chapter addresses the foundations of decision making with respect to climate impact, adaptation, and vulnerability (CIAV). The Fourth Assessment Report (AR4) summarized methods for assessing CIAV (Carter et al., 2007), which we build on by surveying the broader literature relevant for decision making.

Decision making under climate change has largely been modeled on the scientific understanding of the cause-and-effect process whereby increasing greenhouse gas emissions cause climate change, resulting in changing impacts and risks, potentially increasing vulnerability to those risks. The resulting decision-making guidance on impacts and adaptation follows a rational-linear process that identifies potential risks and then evaluates management responses (e.g., Carter et al., 1994; Feenstra et al., 1998; Parry and Carter, 1998; Fisher et al., 2007). This process has been challenged on the grounds that it does not adequately address the diverse contexts within which climate decisions are being made, often neglects existing decision-making processes, and overlooks many cultural and behavioral aspects of decision making (Smit and Wandel, 2006; Sarewitz and Pielke, 2007; Dovers, 2009; Beck, 2010). While more recent guidance on CIAV decision making typically accounts for sectoral, regional, and socioeconomic characteristics (Section 21.3), the broader decision-making literature is still not fully reflected in current methods. This is despite an increasing emphasis on the roles of societal impacts and responses to climate change in decision-making methodologies (*high confidence*) (Sections 1.1, 1.2, 21.2.1).

The main considerations that inform the decision-making contexts addressed here are knowledge generation and exchange, who makes and implements decisions, and the issues being addressed and how these can be addressed. These decisions occur within a broader social and cultural environment. Knowledge generation and exchange includes knowledge generation, development, brokering, exchange, and application to practice. Decision makers include policymakers, managers, planners, and practitioners, and range from individuals to organizations and institutions (Table 21-1). Relevant issues include all areas affected directly and indirectly by climate impacts or by responses to those impacts, covering diverse aspects of society and the environment. These issues include consideration of values, purpose, goals, available resources, the time over which actions are expected to remain effective, and the extent to which the objectives being pursued are regarded as appropriate. The purpose of the decision in question, for example, assessment, strategic planning, or implementation, will also define the framework and tools needed to enable the process. This chapter neither provides any standard template or instructions for decision making, nor does it endorse particular decisions over others.

The remainder of this chapter is organized as follows. Section 2.1.2 addresses risk management, which provides an overall framework suitable for CIAV decision making; Section 2.1.3 introduces decision support; Section 2.2 discusses contexts for decision making; Section 2.3 discusses methods, tools, and processes; Section 2.4 discusses support for and application of decision making; and Section 2.5 describes some of the broader contexts influencing CIAV decision making.

2.1.1. Decision-Making Approaches in this Report

The overarching theme of the chapter and the AR5 report is managing current and future climate risks (Sections 1.2.4, 16.2, 19.1), principally through adaptation (Chapters 14 to 17), but also through resilience and sustainable development informed by an understanding of both impacts and vulnerability (Section 19.2). The International Standard ISO:31000 defines risk as *the effect of uncertainty on objectives* (ISO, 2009) and the Working Group II AR5 Glossary defines risk as *The potential for consequences where something of human value (including humans themselves) is at stake and where the outcome is uncertain* (Rosa, 2003). However, the Glossary also refers to a more operational definition for assessing climate-related hazards: *risk is often represented as probability of occurrence of hazardous events or trends multiplied by the consequences if these events occur*. Risk can also refer to an uncertain opportunity or benefit (see Section 2.2.1.3). This chapter takes a broader perspective than the latter by including risks associated with taking action (e.g., will this adaptation strategy be successful?) and the broader socially constructed risks that surround “climate change” (e.g., fatalism, hope, opportunity, and despair).

Because all decisions on CIAV are affected by uncertainty and focus on valued objectives, all can be considered as decisions involving risk (e.g., Giddens, 2009) (*high confidence*). AR4 endorsed iterative risk management as a suitable decision support framework for CIAV assessment because it offers formalized methods for addressing uncertainty, involving stakeholder participation, identifying potential policy responses, and evaluating those responses (Carter et al., 2007; IPCC, 2007b; Yohe et al., 2007). The literature shows significant advances on all these topics since AR4 (Section 1.1.4), greatly expanding methodologies for assessing impacts, adaptation, and vulnerability in a risk context (Agrawala and Fankhauser, 2008; Hinkel, 2011; Jones and Preston, 2011; Preston et al., 2011).

Many different risk methodologies, such as financial, natural disaster, infrastructure, environmental health, and human health, are relevant for CIAV decision making (*very high confidence*). Each methodology utilizes a variety of different tools and methods. For example, the standard CIAV methodology follows a top-down cause and effect pathway as outlined previously. Others follow a bottom-up pathway, starting with a set of decision-making goals that may be unrelated to climate and consider how climate may affect those goals (see also Sections 15.2.1, 15.3.1). Some methodologies such as vulnerability, resilience, and livelihood assessments are often considered as being different from traditional risk assessment, but may be seen as dealing with particular stages within a longer term iterative risk management process. For example, developing resilience can be seen as managing a range of potential risks that are largely unpredictable; and sustainable development aims to develop a social-ecological system robust to climate risks.

A major aim of decision making is to make good or better decisions. Good and better decisions with respect to climate adaptation are frequently mentioned in the literature but no universal criterion exists for a good decision, including a good climate-related decision (Moser and Ekstrom, 2010). This is reflected in the numerous framings linked to adaptation decision making, each having its advantages and disadvantages

Frequently Asked Questions

FAQ 2.1 | What constitutes a good (climate) decision?

No universal criterion exists for a good decision, including a good climate-related decision. Seemingly reasonable decisions can turn out badly, and seemingly unreasonable decisions can turn out well. However, findings from decision theory, risk governance, ethical reasoning, and related fields offer general principles that can help improve the quality of decisions made.

Good decisions tend to emerge from processes in which people are explicit about their goals; consider a range of alternative options for pursuing their goals; use the best available science to understand the potential consequences of their actions; carefully consider the trade-offs; contemplate the decision from a wide range of views and vantages, including those who are not represented but may be affected; and follow agreed-upon rules and norms that enhance the legitimacy of the process for all those concerned. A good decision will be implementable within constraints such as current systems and processes, resources, knowledge, and institutional frameworks. It will have a given lifetime over which it is expected to be effective, and a process to track its effectiveness. It will have defined and measurable criteria for success, in that monitoring and review is able to judge whether measures of success are being met, or whether those measures, or the decision itself, need to be revisited.

A good climate decision requires information on climate, its impacts, potential risks, and vulnerability to be integrated into an existing or proposed decision-making context. This may require a dialog between users and specialists to jointly ascertain how a specific task can best be undertaken within a given context with the current state of scientific knowledge. This dialog may be facilitated by individuals, often known as knowledge brokers or extension agents, and boundary organizations, who bridge the gap between research and practice. Climate services are boundary organizations that provide and facilitate knowledge about climate, climate change, and climate impacts for planning, decision making, and general societal understanding of the climate system.

(Preston et al., 2013; see also Section 15.2.1). Extensive evidence from the decision sciences shows that good scientific and technical information alone is rarely sufficient to result in better decisions (Bell and Lederman, 2003; Jasanoff, 2010; Pidgeon and Fischhoff, 2011) (*high confidence*). Aspects of decision making that distinguish climate change from most other contexts are the long time scales involved, the pervasive impacts and resulting risks, and the “deep” uncertainties attached to many of those risks (Kandlikar et al., 2005; Ogden and Innes, 2009; Lempert and McKay, 2011). These uncertainties include not only future climate but also socioeconomic change and potential changes in norms and values within and across generations.

2.1.2. Iterative Risk Management

Iterative risk management involves an ongoing process of assessment, action, reassessment, and response (Kambhu et al., 2007; IRGC, 2010) that will continue—in the case of many climate-related decisions—for decades if not longer (National Research Council, 2011). This development is consistent with an increasing focus on risk governance (Power, 2007; Renn, 2008), the integration of climate risks with other areas of risk management (Hellmuth et al., 2011; Measham et al., 2011), and a wide range of approaches for structured decision making involving process uncertainty (Ohlson et al., 2005; Wilson and McDaniels, 2007; Ogden and Innes, 2009; Martin et al., 2011).

Two levels of interaction can be recognized within the iterative risk management process: one internal and one external (Figure 2-1).

External factors are present through the entire process and shape the process outcomes. The internal aspects describe the adaptation process itself. The first major internal iteration (in yellow) reflects the interplay with the analysis phase by addressing the interactions between evolving risks and their feedbacks (not shown) and during the development and choice of options. This process may also require a revision of criteria and objectives. This phase ends with decisions on the favored options being made. A further internal iteration covers the implementation of actions and their monitoring and review (in orange). Throughout all stages the process is reflexive, in order to enable changes in knowledge, risks, or circumstances to be identified and responded to. At the end of the implementation stage, all stages are evaluated and the process starts again with the scoping phase. Iterations can be successive, on a set timetable, triggered by specific criteria or informally by new information informing risk or a change in the policy environment. An important aspect of this process is to recognize emergent risks and respond to them (Sections 19.2.3, 19.2.4, 19.2.5, 19.3).

Complexity is an important attribute for framing and implementing decision-making processes (*very high confidence*). Simple, well-bounded contexts involving cause and effect can be addressed by straightforward linear methods. Complicated contexts require greater attention to process but can generally be unravelled, providing an ultimate solution (Figure 2-2). However, when complex environments interact with conflicting values they become associated with wicked problems. Wicked problems are not well bounded, are framed differently by various groups and individuals, harbor large scientific to existential uncertainties and have unclear solutions and pathways to those solutions (Rittel and Webber,

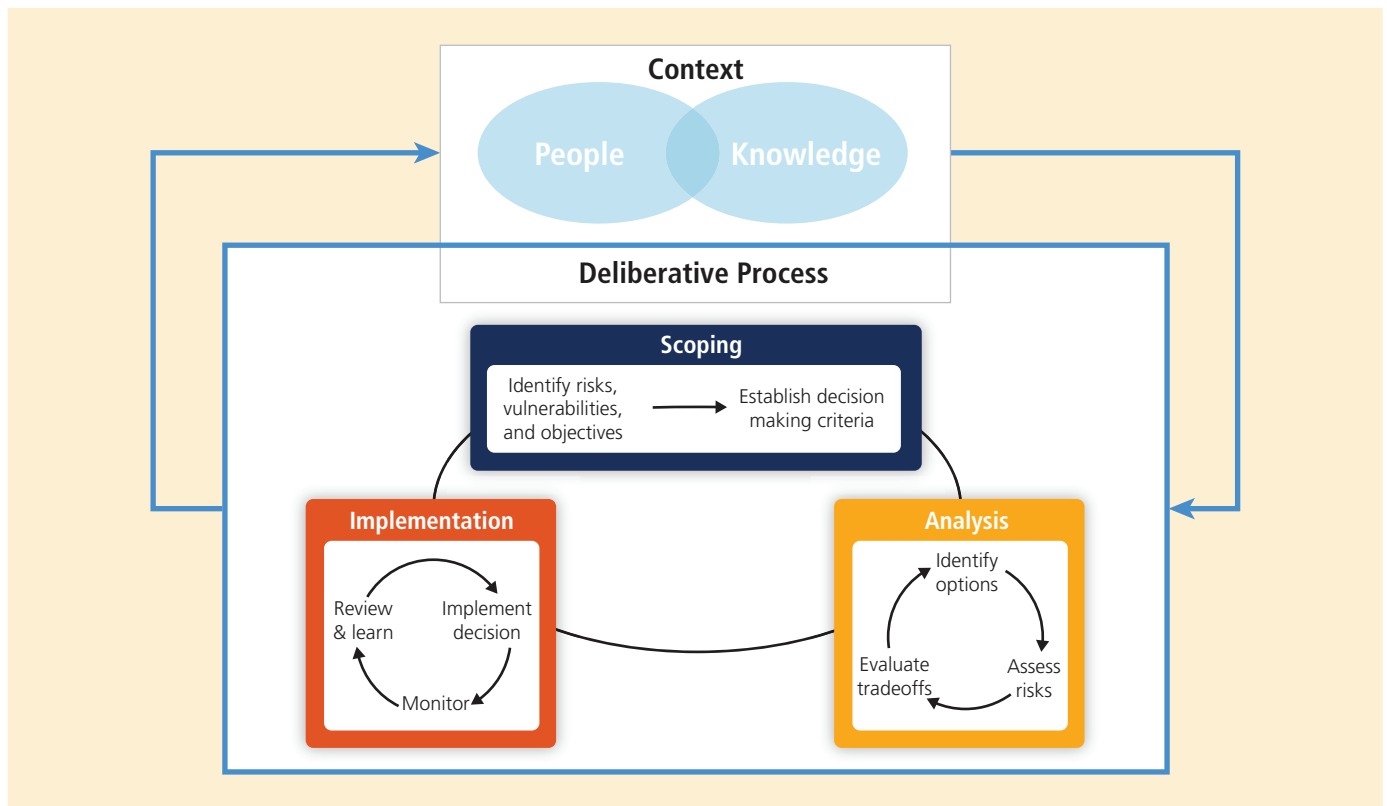


Figure 2-1 | Iterative risk management framework depicting the assessment process, and indicating multiple feedbacks within the system and extending to the overall context (adapted from Willows and Connell, 2003).

1973; Australian Public Service Commission, 2007). Such “deep uncertainty” cannot easily be quantified (Dupuy and Grinbaum, 2005; Kandlikar et al., 2005). Another important attribute of complex systems is *reflexivity*, where cause and effect feed back into each other (see Glossary). For example, actions taken to manage a risk will affect the outcomes, requiring iterative processes of decision making (*very high confidence*). Under climate change, calculated risks will also change with time as new knowledge becomes available (Ranger et al., 2010).

In complex situations, sociocultural and cognitive-behavioral contexts become central to decision making. This requires combining the scientific understanding of risk with how risks are framed and perceived by individuals, organizations, and institutions (Hansson, 2010). For that reason, formal risk assessment is moving from a largely technocratic exercise carried out by experts to a more participatory process of decision support (Fiorino, 1990; Pereira and Quintana, 2002; Renn, 2008), although this process is proceeding slowly (Christoplos et al., 2001; Pereira and Quintana, 2002; Bradbury, 2006; Mercer et al., 2008).

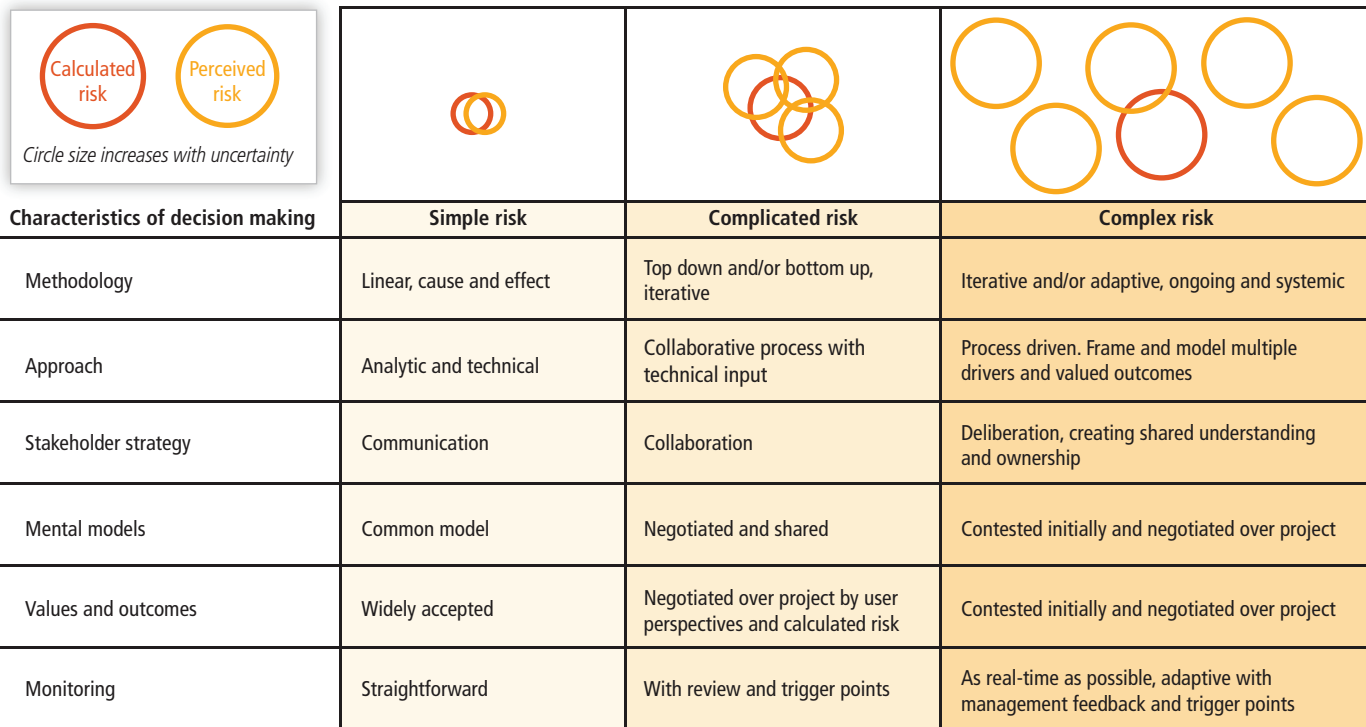
Different traditional and modern epistemologies, or “ways of knowing” exist for risk (Hansson, 2004; Althaus, 2005; Hansson, 2010), vulnerability (Weichselgartner, 2001; O’Brien et al., 2007), and adaptation assessments (Adger et al., 2009), affecting the way they are framed by various disciplines and are also understood by the public (Garvin, 2001; Adger, 2006; Burch and Robinson, 2007). These differences have been identified as a source of widespread misunderstanding and disagreement. They are also used to warn against a uniform epistemic

approach (Hulme, 2009; Beck, 2010), a critique that has been leveled against previous IPCC assessments (e.g., Hulme and Mahony, 2010).

The following three types of risk have been identified as important epistemological constructs (Thompson, 1986; Althaus, 2005; Jones, 2012):

1. Idealized risk: the conceptual framing of the problem at hand. For example, dangerous anthropogenic interference with the climate system is how climate change risk is idealized within the UNFCCC.
2. Calculated risk: the product of a model based on a mixture of historical (observed) and theoretical information. Frequentist or recurrent risks often utilize historical information whereas single-event risks may be unprecedented, requiring a more theoretical approach.
3. Perceived risk: the subjective judgment people make about an idealized risk (see also Section 19.6.1.4).

These different types show risk to be partly an objective threat of harm and partly a product of social and cultural experience (Kasperson et al., 1988; Kasperson, 1992; Rosa, 2008). The aim of calculating risk is to be as objective as possible, but the subjective nature of idealized and perceived risk reflects the division between positivist (imposed norms) and constructivist (derived norms) approaches to risk from the natural and social sciences respectively (Demeritt, 2001; Hansson, 2010). Idealized risk is important for framing and conceptualizing risk and will often have formal and informal status in the assessment process, contributing to both calculated and perceived risk. These types of risk combine at the societal scale as socially constructed risk, described and



Characteristics of decision making	Simple risk	Complicated risk	Complex risk
Methodology	Linear, cause and effect	Top down and/or bottom up, iterative	Iterative and/or adaptive, ongoing and systemic
Approach	Analytic and technical	Collaborative process with technical input	Process driven. Frame and model multiple drivers and valued outcomes
Stakeholder strategy	Communication	Collaboration	Deliberation, creating shared understanding and ownership
Mental models	Common model	Negotiated and shared	Contested initially and negotiated over project
Values and outcomes	Widely accepted	Negotiated over project by user perspectives and calculated risk	Contested initially and negotiated over project
Monitoring	Straightforward	With review and trigger points	As real-time as possible, adaptive with management feedback and trigger points

Figure 2-2 | Hierarchy of simple, complicated, and complex risks, showing how perceived risks multiply and become less connected with calculated risk with increasing complexity. Also shown are major characteristics of assessment methods for each level of complexity.

assessed in a wide range of research literature such as psychology, anthropology, geography, ethics, sociology, and political science (see Sections 2.2.1.2, 19.6.1.4).

Acceptance of the science behind controversial risks is strongly influenced by social and cultural values and beliefs (Leiserowitz, 2006; Kahan et al., 2007; Brewer and Pease, 2008). Risk perceptions can be amplified socially where events pertaining to hazards interact with psychological, social, institutional, and cultural processes in ways that heighten or attenuate individual and social perceptions of risk and shape risk behavior (Kasperson et al., 1988; Renn et al., 1992; Pidgeon et al., 2003; Rosa, 2003; Renn, 2011). The media have an important role in propagating both calculated and perceived risk (Llasat et al., 2009), sometimes to detrimental effect (Boykoff and Boykoff, 2007; Oreskes and Conway, 2010; Woods et al., 2012).

Understanding how these perceptions resonate at an individual and collective level can help overcome constraints to action (Renn, 2011). Science is most suited to calculating risk in areas where it has predictive skill and will provide better estimates than may be obtained through more informal methods (Beck, 2000), but an assessment of what is at risk generally needs to be accepted by stakeholders (Eiser et al., 2012). Therefore, the science always sits within a broader social setting (Jasanoff, 1996; Demeritt, 2001; Wynne, 2002; Demeritt, 2006), often requiring a systems approach where science and policy are investigated in tandem, rather than separately (Pahl-Wostl, 2007; Ison, 2010) (*very high confidence*). These different types of risk give rise to complex interactions between formal and informal knowledge that cannot be bridged by better science or better predictions but require socially and culturally mediated processes of engagement (*high confidence*).

2.1.3. Decision Support

The concept of *decision support* provides a useful framework for understanding how risk-based concepts and information can help enhance decision making (McNie, 2007; National Research Council Panel on Design Issues for the NOAA Sectoral Applications Research Program et al., 2007; Moser, 2009; Romsdahl and Pyke, 2009; Kandlikar et al., 2011; Pidgeon and Fischhoff, 2011). The concept also helps situate methods, tools, and processes intended to improve decision making within appropriate institutional and cultural contexts.

Decision support is defined as “a set of processes intended to create the conditions for the production of decision-relevant information and for its appropriate use” (National Research Council, 2009a, p. 33). Information is decision-relevant if it yields deeper understanding of, or is incorporated into making a choice that improves outcomes for decision makers and stakeholder or precipitates action to manage known risks. Effective decision support provides users with information they find useful because they consider it credible, legitimate, actionable, and salient (e.g., Jones et al., 1999; Cash et al., 2003; Mitchell, 2006; Reid et al., 2007). Such criteria can be used to evaluate decision support and such evaluations lead to common principles of effective decision support, which have been summarized in National Research Council (2009b) as:

- Begins with user’s needs, not scientific research priorities. Users may not always know their needs in advance, so user needs are often developed collaboratively and iteratively among users and researchers.
- Emphasizes processes over products. Though the information products are important, they are likely to be ineffective if they are not developed to support well-considered processes.

- Incorporates systems that link users and producers of information. These systems generally respect the differing cultures of decision makers and scientists, but provide processes and institutions that effectively link individuals from these differing communities.
- Builds connections across disciplines and organizations, in order to provide for the multidisciplinary character of the needed information and the differing communities and organizations in which this information resides.
- Seeks institutional stability, either through stable institutions and/or networks, which facilitates building the trust and familiarity needed for effective links and connections among information users and producers in many different organizations and communities.
- Incorporates learning, so that all parties recognize the need for and contribute to the implementation of decision support activities structured for flexibility, adaptability, and learning from experience.

These principles can lead to different decision support processes depending on the stage and context of the decision in question. For instance, decision support for a large water management agency operating an integrated system serving millions of people will have different needs than a small town seeking to manage its groundwater supplies. A community in the early stages of developing a response to climate change may be more focused on raising awareness of the issue among its constituents, while a community with a well-developed understanding of its risks may be more focused on assessing trade-offs and allocating resources.

2.2. Contexts for Decision Making

This section surveys aspects of decision making that relate to context setting. Social context addresses cultural values, psychology, language, and ethics (Section 2.2.1) and institutional context covers institutions and governance (Section 2.2.2).

2.2.1. Social Context

Decision support for CIAV must recognize that diverse values, language uses, ethics, and human psychological dimensions play a crucial role in the way that people use and process information and take decisions (Kahan and Braman, 2006; Leiserowitz, 2006). As illustrated in Figure 2-1, the context defines and frames the space in which decision-making processes operate.

2.2.1.1. Cultural Values and Determinants

Cultural differences allocate values and guide socially mediated change. Five value dimensions that show significant cross-national variations are: power distance, individualism/collectivism, uncertainty avoidance, long-/short-term orientation, and masculinity/femininity (Hofstede, 1980, 2001; Hofstede et al., 2010). Power distance and individualism/collectivism both show a link to climate via latitude; the former relates to willingness to conform to top-down directives, whereas the latter relates to the potential efficacy of market-/community-based strategies. Uncertainty avoidance and long-term orientation show considerable

variation between countries (Hofstede et al., 2010), potentially producing significant differences in risk perception and agency.

Environmental values have also been linked to cultural orientation. Schultz et al. (2004) identified the association between self and nature in people as being implicit—informing actions without specific awareness. A strong association was linked to a more connected self and a weaker association with a more egoistic self. Explicit environmental values can substantially influence climate change-related decision-making processes (Nilsson et al., 2004; Milfont and Gouveia, 2006; Soyez et al., 2009) and public behavior toward policies (Stern and Dietz, 1994; Xiao and Dunlap, 2007). Schaffrin (2011) concludes that geographical aspects, vulnerability, and potential policy benefits associated with a given issue can influence individual perceptions and willingness to act (De Groot and Steg, 2007, 2008; Shwom et al., 2008; Milfont et al., 2010). Cultural values can interrelate with specific physical situations of climate change (Corraliza and Berenguer, 2000), or seasonal and meteorological factors influencing people's implicit connections with nature (Duffy and Verges, 2010). Religious and sacred values are also important (Goloubinoff, 1997; Katz et al., 2002; Lammel et al., 2008), informing the perception of climate change and risk, as well as the actions to adapt (Crate and Nuttal, 2009; see also Section 16.3.1.3). The role of protected values (values that people will not trade off, or negotiate) can also be culturally and spiritually significant (Baron and Spranca, 1997; Baron et al., 2009; Hagerman et al., 2010). Adger et al. (2013) emphasize the importance of cultural values in assessing risks and adaptation options, suggesting they are at least as important as economic values in many cases, if not more so. These aspects are important for framing and conceptualizing CIAV decision making. Cultural and social barriers are described in Section 16.3.2.7.

Two distinct ways of thinking—holistic and analytical thinking—reflect the relationship between humans and nature and are cross-culturally and even intra-culturally diverse (Gagnon Thompson and Barton, 1994; Huber and Pedersen, 1997; Atran et al., 2005; Ignatow, 2006; Descola, 2010; Ingold, 2011). Holistic thinking is primarily gained through experience and is dialectical, accepting contradictions and integrating multiple perspectives. Characteristic of collectivist societies, the holistic conceptual model considers that social obligations are reciprocal and individuals take an active part in the community for the benefit of all (Peng and Nisbett, 1999; Nisbett et al., 2001; Lammel and Kozakai, 2005; Nisbett and Miyamoto, 2005). Analytical thinking isolates the object from its broader context, understanding its characteristics through categorization, and predicting events based on intrinsic rules. In the analytic conceptual model, individual interests take precedence over the collective; the self is independent and communication comes from separate fields. These differences influence the understanding of complex systemic phenomena such as climate change (Lammel et al., 2011, 2012, 2013) and decision-making practices (Badke-Schaub and Strohschneider, 1998; Strohschneider and Güss, 1999; Güss et al., 2010).

The above models vary greatly across the cultural landscape, but neither model alone is sufficient for decision making in complex situations (*high confidence*). At a very basic level, egalitarian societies may respond more to community based adaptation in contrast to more individualistic societies that respond to market-based forces (*medium confidence*). In small-scale societies, knowledge about climate risks are often integrated

into a holistic view of community and environment (e.g., Katz et al., 2002; Strauss and Orlove, 2003; Lammel et al., 2008). Many studies highlight the importance of integrating local, traditional knowledge with scientific knowledge when assessing CIAV (Magistro and Roncoli, 2001; Krupnik and Jolly, 2002; Vedwan, 2006; Nyong et al., 2007; Dube and Sekhwela, 2008; Crate and Nuttal, 2009; Mercer et al., 2009; Roncoli et al., 2009; Green and Raygorodetsky, 2010; Orlove et al., 2010; Crate, 2011; Nakashima et al., 2012; see also Sections 12.3, 12.3.1, 12.3.2, 12.3.3, 12.3.4, 14.4.5, 14.4.7, 15.3.2.7, 25.8.2, 28.2.6.1, 28.4.1). For example, a case study in Labrador (Canada) demonstrated the need to account for local material and symbolic values because they shape the relationship to the land, underlie the way of life, influence the intangible effects of climate change, and can lead to diverging views on adaptations (Wolf et al., 2012). In Kiribati, the integration of local cultural values attached to resources/assets is fundamental to adaptation planning and water management; otherwise technology will not be properly utilized (Kuruppu, 2009).

2.2.1.2. Psychology

Psychology plays a significant role in climate change decision making (Gifford, 2008; Swim et al., 2010; Anderson, 2011). Important psychological factors for decision making include perception, representation, knowledge acquisition, memory, behavior, emotions, and understanding of risk (Böhm and Pfister, 2000; Leiserowitz, 2006; Lorenzoni et al., 2006; Oskamp and Schultz, 2006; Sterman and Sweeney, 2007; Gifford, 2008; Kazdin, 2009; Sundblad et al., 2009; Reser et al., 2011; Swim et al., 2011).

Psychological research contributes to understanding on both risk perception and the process of adaptation. Several theories, such as multi-attribute utility theory (Keeney, 1992), prospect theory (Kahneman and Tversky, 1979; Hardman, 2009), and cumulative prospect theory relate to decision making under uncertainty (Tversky and Kahneman, 1992), especially to risk perception and agency. Adaptation in complex situations pits an unsure gain against an unsure loss, so creates an asymmetry in preference that magnifies with time as gains/losses are expected to accrue in future. Decisions focusing on values and uncertainty are therefore subject to framing effects. Recent cognitive approaches include the one-reason decision process that uses limited data in a limited time period (Gigerenzer and Goldstein, 1996) or decision by sampling theory that samples real-world data to account for the cognitive biases observed in behavioral economics (Stewart et al., 2006; Stewart and Simpson, 2008). Risk perception is further discussed in Section 19.6.1.4.

Responses to new information can modify previous decisions, even producing contradictory results (Grothmann and Patt, 2005; Marx et al., 2007). Although knowledge about climate change is necessary (Milfont, 2012), understanding such knowledge can be difficult (Rajeev Gowda et al., 1997; Boyes et al., 1999; Andersson and Wallin, 2000). Cognitive obstacles in processing climate change information include psychological distances with four theorized dimensions: temporal, geographical, social distance, and uncertainty (Spence et al., 2012; see also Section 25.4.3). Emotional factors also play an important role in climate change perception, attitudes, decision making, and actions (Meijnders et al.,

2002; Leiserowitz, 2006; Klöckner and Blöbaum, 2010; Fischer and Glenk 2011; Roeser, 2012) and even shape organizational decision making (Wright and Nyberg, 2012). Other studies on attitudes and behaviors relevant to climate change decision making, include place attachment (Scannell and Gifford, 2013; see also Section 25.4.3), political affiliation (Davidson and Haan, 2011), and perceived costs and benefits (Tobler et al., 2012). Time is a critical component of action-based decision making (Steel and König, 2006). As the benefits of many climate change actions span multiple temporal scales, this can create a barrier to effective motivation for decisions through a perceived lack of value associated with long-term outcomes.

Protection Motivation Theory (Rogers, 1975; Maddux and Rogers, 1983), which proposes that a higher personal perceived risk will lead to a higher motivation to adapt, can be applied to climate change-related problems (e.g., Grothmann and Reusswig, 2006; Cismaru et al., 2011). The person-relative-to-event approach predicts human coping strategies as a function of the magnitude of environmental threat (Mullis and Duval, 1995; Duval and Mullis, 1999; Grothmann et al., 2013). People's responses to environmental hazards and disasters are represented in the multistage Protective Action Decision Model (Lindell and Perry, 2012). This model helps decision makers to respond to long-term threat and apply it in long-term risk management. Grothmann and Patt (2005) developed and tested a socio-cognitive model of proactive private adaptation to climate change showing that perceptions of adaptive capacities were important as well as perceptions of risk. If a perceived high risk is combined with a perceived low adaptive capacity (see Section 2.4.2.2; Glossary), the response is fatalism, denial, and wishful thinking.

Best-practice methods for incorporating and communicating information about risk and uncertainties into decisions about climate change (Climate Change Science Program, 2009; Pidgeon and Fischhoff, 2011) suggests that effective communication of uncertainty requires products and processes that (1) closes psychological distance, explaining why this information is important to the recipient; (2) distinguishes between and explains different types of uncertainty; (3) establishes self-agency, explaining what the recipient can do with the information and ways to make decisions under uncertainty (e.g., precautionary principle, iterative risk-management); (4) recognizes that each person's view of risks and opportunities depends on their values; (5) recognizes that emotion is a critical part of judgment; and (6) provides mental models that help recipients to understand the connection between cause and effect. Information providers also need to test their messages, as they may not be communicating what they think they are.

2.2.1.3. Language and Meaning

Aspects of decision making concerned with language and meaning include framing, communication, learning, knowledge exchange, dialog, and discussion. Most IPCC-related literature on language and communication deals with definitions, predictability, and incomplete knowledge, with less emphasis given to other aspects of decision support such as learning, ambiguity, contestedness, and complexity. Three important areas assessed here are definitions, risk language and communication, and narratives.

Decision-making processes need to accommodate both specialist and non-specialist meanings of the concepts they apply. Various disciplines often have different definitions for the same terms or use different terms for the same action or object, which is a major barrier for communication and decision making (Adger, 2003; see also Chapter 21). For example, adaptation is defined differently with respect to biological evolution, climate change, and social adaptation. Budesu et al. (2012) found that people prefer imprecise wording but precise numbers when appropriate. Personal lexicons vary widely, leading to differing interpretations of uncertainty terms (Morgan et al., 1990); in the IPCC's case leading to uncertainty ranges often being interpreted differently than intended (Patt and Schrag, 2003; Patt and Dessai, 2005; Budesu et al., 2012). Addressing both technical and everyday meanings of key terms can help bridge the analytic and emotive aspects of cognition. For example, words like danger, disaster, uncertainty, and catastrophe have technical and emotive aspects (Britton, 1986; Carvalho and Burgess, 2005). Terms where this issue is especially pertinent include adaptation, vulnerability, risk, dangerous, catastrophe, resilience, and disaster. Other words have definitional issues because they contain different epistemological frames; sustainability and risk are key examples (Harding, 2006; Hamilton et al., 2007). Many authors advocate that narrow definitions focused solely on climate need to be expanded to suit the context in which they are being used (Huq and Reid, 2004; O'Brien et al., 2007; Schipper, 2007). This is a key role for risk communication, ensuring that different types of knowledge are integrated within decision context and outlining the different values—implicit and explicit—involved in the decision process (e.g., Morgan, 2002; Lundgren and McMakin, 2013).

The language of risk has a crucial role in framing and belief. Section 2.1.2 described over-arching and climate-specific definitions but risk enters into almost every aspect of social discourse, so is relevant to how risk is framed and communicated (e.g., Hansson, 2004). Meanings of risk range from its ordinary use in everyday language to power and political discourse, health, emergency, disaster, and seeking benefits, ranging from specific local meanings to broad-ranging concepts such as the risk society (Beck and Ritter, 1992; Beck, 2000; Giddens, 2000). Complex framings in the word risk (Fillmore and Atkins, 1992; Hamilton et al., 2007) feature in general English as both a noun and a verb, reflecting harm and chance with negative and positive senses (Fillmore and Atkins, 1992). Problem analysis applies risk as a noun (at-risk), whereas risk management applies risk as a verb (to-risk) (Jones, 2011). For simple risks, this transition is straightforward because of agreement around values and agency (Figure 2-2). In complex situations, risk as a problem and as an opportunity can compete with each other, and if socially amplified can lead to action paralysis (Renn, 2011). For example, unfamiliar adaptation options that seem to be risky themselves will force a comparison between the risk of maladaptation and future climate risks, echoing the risk trap where problems and solutions come into conflict (Beck, 2000). Fear-based dialogs in certain circumstances can cause disengagement (O'Neill and Nicholson-Cole, 2009), by emphasizing risk aversion. Young (2013) proposes framing adaptation as a solution to overcome the limitations of framing through the problem, and links it to innovation, which provides established pathways for the implementation of actions, proposing a problem-solution framework linking decision making to action. Framing decisions and modeling actions on positive risk-seeking behavior can help people to address uncertainty as opportunity (e.g., Keeney, 1992).

Narratives are accounts of events with temporal or causal coherence that may be goal directed (László and Ehmann, 2012) and play a key role in communication, learning, and understanding. They operate at the personal to societal scales, are key determinants of framing, and have a strong role in creating social legitimacy. Narratives can also be non-verbal: visualization, kinetic learning by doing, and other sensory applications can be used to communicate science and art and to enable learning through play (Perlovsky, 2009; Radford, 2009). Narratives of climate change have evolved over time and invariably represent uncertainty and risk (Hamblyn, 2009) being characterized as tools for analysis, communication, and engagement (Cohen, 2011; Jones et al., 2013; Westerhoff and Robinson, 2013) by:

- Providing a social and environmental context to modelled futures (Arnell et al., 2004; Kriegler et al., 2012; O'Neill et al., 2014), by describing aspects of change that drive or shape those futures as part of scenario construction (Cork et al., 2012).
- Communicating knowledge and ideas to increase understanding and increase agency framing it in ways so that actions can be implemented (Juhola et al., 2011) or provide a broader socio-ecological context to specific knowledge (Burley et al., 2012). These narratives bridge the route between scientific knowledge and local understandings of adaptation, often by working with multiple actors in order to creatively explore and develop collaborative potential solutions (Turner and Clifton, 2009; Paton and Fairbairn-Dunlop, 2010; Tschakert and Dietrich, 2010).
- Exploring responses at an individual/institutional level to an aspect of adaptation, and communicating that experience with others (Bravo, 2009; Cohen, 2011). For example, a community that believes itself to be resilient and self-reliant is more likely to respond proactively, contrasted to a community that believes itself to be vulnerable (Farbotko and Lazrus, 2012). Bravo (2009) maintains that narratives of catastrophic risk and vulnerability demotivate indigenous peoples whereas narratives combining scientific knowledge and active citizenship promote resilience (Section 2.5.2).

2.2.1.4. Ethics

Climate ethics can be used to formalize objectives, values (Section 2.2.1.1), rights, and needs into decisions, decision-making processes, and actions (see also Section 16.7). Principal ethical concerns include intergenerational equity; distributional issues; the role of uncertainty in allocating fairness or equity; economic and policy decisions; international justice and law; voluntary and involuntary levels of risk; cross-cultural relations; and human relationships with nature, technology, and the sociocultural world. Climate change ethics have been developing over the last 20 years (Jamieson, 1992, 1996; Gardiner, 2004; Gardiner et al., 2010), resulting in a substantial literature (Garvey, 2008; Harris, 2010; O'Brien et al., 2010; Arnold, 2011; Brown, 2012; Thompson and Bendik-Keymer, 2012). Equity, inequity, and responsibility are fundamental concepts in the UNFCCC (UN, 1992) and therefore are important considerations in policy development for CIAV. Climate ethics examine effective responsible and "moral" decision making and action, not only by governments but also by individuals (Garvey, 2008).

An important discourse on equity is that industrialized countries have, through their historical emissions, created a natural debt (Green and

Smith, 2002). Developing nations experience this debt through higher impacts and greater vulnerability combined with limited adaptive capacity. Regional inequity is also of concern (Green and Smith, 2002), particularly indigenous or marginalized populations exposed to current climate extremes, who may become more vulnerable under a changing climate (Tsoie, 2007; see also Section 12.3.3). With respect to adaptation assessment, cost-benefit or cost-effectiveness methods combined with transfer of funds will not satisfy equity considerations (Broome, 2008; see also Section 17.3.1.4) and modifications such as equity-weighting (Kuik et al., 2008) and cost-benefit under uncertainty (Section 17.3.2.1), have not been widely used. Adaptation measures need to be evaluated by considering their equity implications (Section 17.3.1.4) especially under uncertainty (Hansson, 2004).

Intergenerational issues are frequently treated as an economic problem, with efforts to address them through an ethical framework proving to be controversial (Nordhaus, 2007; Stern and Treasury of Great Britain, 2007; Stern, 2008). However, future harm may make the lives of future generations difficult or impossible, dilemmas that involve ethical choices (Broome, 2008), therefore discount rates matter (Section 17.4.4.4). Some authors question whether the rights and interests of future people should even be subject to a positive discount rate (Caney, 2009). Future generations can neither defend themselves within current economic frameworks (Gardiner, 2011) nor can these frameworks properly account for the dangers, interdependency, and uncertainty under climate change (Nelson, 2011), even though people's values may change over time (Section 16.7). The limits to adaptation raise questions of irreversible loss and the loss of unique cultural values that cannot necessarily be easily transferred (Section 16.7), contributing to key vulnerabilities and informing ethical issues facing mitigation (see Section 19.7.1).

Environmental ethics considers the decisions humans may make concerning a range of biotic impacts (Schalow, 2000; Minter and Collins, 2010; Nanda, 2012; Thompson and Bendik-Keymer, 2012). Intervention in natural systems through "assisted colonization" or "managed relocation" raises important ethical and policy questions (Minter and Collins, 2010; Section 4.4.2.4) that include the risk of unintended consequences (Section 4.4.4). Various claims are made for a more pragmatic ethics of ecological decision making (Minter and Collins, 2010), consideration of moral duties toward species (Sandler, 2009), and ethically explicit and defensible decision making (Minter and Collins, 2005a,b).

Cosmopolitan ethics and global justice can lead to successful adaptation and sustainability (Caney, 2006; Harris, 2010) and support collective decision making on public matters through voting procedures (Held, 2004). Ethics also concerns the conduct and application of research, especially research involving stakeholders. Action-based and participatory research requires that a range of ethical guidelines be followed, taking consideration of the rights of stakeholders, respect for cultural and practical knowledge, confidentiality, dissemination of results, and development of intellectual property (Macaulay et al., 1999; Kindon et al., 2007; Daniell et al., 2009; Pearce et al., 2009). Ethical agreements and processes are an essential part of participatory research, whether taking part as behavioral change processes promoting adaptation or projects of collaborative discovery (*high confidence*). Although the climate change ethics literature is rapidly developing, the related practice of

decision making and implementation needs further development. Ethical and equity issues are discussed in WGIII AR5 Chapter 3.

2.2.2. Institutional Context

2.2.2.1. Institutions

Institutions are rules and norms held in common by social actors that guide, constrain, and shape human interaction (North, 1990; Glossary). Institutions can be formal, such as laws and policies, or informal, such as norms and conventions. Organizations—such as parliaments, regulatory agencies, private firms, and community bodies—develop and act in response to institutional frameworks and the incentives they frame (Young et al., 2008). Institutions can guide, constrain, and shape human interaction through direct control, through incentives, and through processes of socialization (Glossary). Virtually all CIAV decisions will be made by or influenced by institutions because they shape the choices made by both individuals and organizations (Bedsworth and Hanak, 2012). Institutional linkages are important for adaptation in complex and multi-layered social and biophysical systems such as coastal areas (Section 5.5.3.2) and urban systems (Section 8.4.3.4), and are vital in managing health (Section 11.6), human security (Sections 12.5.1, 12.6.2), and poverty (Section 13.1). Institutional development and interconnectedness are vital in mediating vulnerability in social-ecological systems to changing climate risks, especially extremes (Chapters 5, 7 to 9, 11 to 13).

The role of institutions as actors in adaptation are discussed in Section 14.4, in planning and implementing adaptation in Section 15.5, and in providing barriers and opportunities in Section 16.3. Their roles can be very diverse. Local institutions usually play important roles in accessing resources and in structuring individual and collective responses (Agarwal, 2010; see also Section 14.4.2) but Madzwamuse (2010) found that in Africa, state-level actors had significantly more influence on formal adaptation policies than did civil society and local communities. This suggests a need for greater integration and cooperation among institutions of all levels (Section 15.5.1.2). Section 14.2.3 identifies four institutional design issues: flexibility; potential for integration into existing policy plans and programs; communication, coordination, and cooperation; and the ability to engage with multiple stakeholders.

Institutions are instrumental in facilitating adaptive capacity, by utilizing characteristics such as variety, learning capacity, room for autonomous change, leadership, availability of resources, and fair governance (Gupta et al., 2008). They play a key role in mediating the transformation of coping capacity into adaptive capacity and in linking short and long-term responses to climate change and variability (Berman et al., 2012). Most developing countries have weaker institutions that are less capable of managing extreme events, increasing vulnerability to disasters (Lateef, 2009; Biesbroek et al., 2013). Countries with strong functional institutions are generally assumed to have a greater capacity to adapt to current and future disasters. However, Hurricane Katrina of 2005 in the USA and the European heat wave of 2003 demonstrate that strong institutions and other determinants of adaptive capacity do not necessarily reduce vulnerability if these attributes are not translated to actions (IPCC, 2007a; see also Box 2-1, Section 2.4.2.2).

To facilitate adaptation under uncertainty, institutions need to be flexible enough to accommodate adaptive management processes such as evaluation, learning, and refinement (Agarwal, 2010; Gupta et al., 2010; see also Section 14.2.3). Organizational learning can lead to significant change in organizations' purpose and function (Bartley, 2007), for example, where non-governmental organizations have moved from advocacy to program delivery with local stakeholders (Ziervogel and Zermoglio, 2009; Kolk and Pinkse, 2010; Worthington and Pipa, 2010).

Boundary organizations are increasingly being recognized as important to CIAV decision support (Guston, 2001; Cash et al., 2003; McNie, 2007; Vogel et al., 2007). A boundary organization is a bridging institution, social arrangement, or network that acts as an intermediary between science and policy (Glossary). Its functions include facilitating communication between researchers and stakeholders, translating science and technical information, and mediating between different views of how to interpret that information. It will also recognize the importance of location-specific contexts (Ruttan et al., 1994); provide a forum in which information can be co-created by interested parties (Cash et al., 2003); and develop boundary objects, such as scenarios, narratives, and model-based decision support systems (White et al., 2010). Adaptive and inclusive management practices are considered to be essential, particularly in addressing wicked problems such as climate change (Batie, 2008). Boundary organizations also link adaptation to other processes managing global change and sustainable development.

Boundary organizations already contributing to regional CIAV assessments include the Great Lakes Integrated Sciences and Assessments Center in the USA (GLISA; <http://www.glista.umich.edu/>); part of the Regional Integrated Sciences and Assessments Program of the U.S. government (RISA; Pulwarty et al., 2009); the UK Climate Impacts Program (UKCIP; UK Climate Impacts Program, 2011); the Alliance for Global Water Adaptation (AGWA; <http://alliance4water.org/>); and institutions working on water issues in the USA, Mexico, and Brazil (Kirchhoff et al., 2012; Varady et al., 2012).

2.2.2.2. Governance

Effective climate change governance is important for both adaptation and mitigation and is increasingly being seen as a key element of risk management (*high confidence*) (Renn, 2008; Renn et al., 2011). Some analysts propose that governance of adaptation requires knowledge of anticipated regional and local impacts of climate change in a more traditional planning approach (e.g., Meadowcroft, 2009), whereas others propose governance consistent with sustainable development and resilient systems (Adger, 2006; Nelson et al., 2007; Meuleman and in 't Veld, 2010). Quay (2010) proposes "anticipatory governance"—a flexible decision framework based on robustness and learning (Sections 2.3.3, 2.3.4). Institutional decisions about climate adaptation are taking place within a multi-level governance system (Rosenau, 2005; Kern and Alber, 2008). Multi-level governance could be a barrier for successful adaptation if there is insufficient coordination as it comprises different regulatory, legal, and institutional systems (Section 16.3.1.4), but is required to manage the "adaptation paradox" (local solutions to a global problem), unclear ownership of risks and the adaptation bottleneck

linked to difficulties with implementation (Section 14.5.3). Lack of horizontal and vertical integration between organizations and policies leads to insufficient risk governance in complex social-ecological systems such as coasts (Section 5.5.3.2) and urban areas (Section 8.4), including in the management of compound risks (Section 19.3.2.4).

Legal and regulatory frameworks are important institutional components of overall governance, but will be challenged by the pervasive nature of climate risks (*high confidence*) (Craig, 2010; Ruhl, 2010a,b). Changes proposed to manage these risks better under uncertainty include integration between different areas of law, jurisdictions and scale, changes to property rights, greater flexibility with respect to adaptive management, and a focus on ecological processes rather than preservation (Craig, 2010; Ruhl, 2010a; Abel et al., 2011; Macintosh et al., 2013). Human security in this report is not seen just as an issue of rights (Box 12-1), given that a minimum set of universal rights exists (though not always exercised), but is instead assessed as being subject to a wide range of forces. Internationally, sea level rise could alter the maritime boundaries of many nations that may lead to new claims by affected nations or loss of sovereignty (Barnett and Adger, 2003). New shipping routes, such as the North West Passage, will be opened up by losses in Arctic sea ice (Sections 6.4.1.6, 28.2.6). Many national and international legal institutions and instruments need to be updated to face climate-related challenges and decision implementation (*medium confidence*) (Verschuuren, 2013).

2.3. Methods, Tools, and Processes for Climate-related Decisions

This section deals with methods, tools, and processes that deal with uncertainties (Section 2.3.1); describes scenarios (Section 2.3.2); covers trade-offs and multi-metric valuation (Section 2.3.3); and reviews learning and reframing (Section 2.3.4).

2.3.1. Treatment of Uncertainties

Most advice on uncertainty, including the latest guidance from the IPCC (Mastrandrea et al., 2010; see also Section 1.1.2.2), deals with uncertainty in scientific findings and to a lesser extent confidence. Although this is important, uncertainty can invade all aspects of decision making, especially in complex situations. Whether embodied in formal analyses or in the training and habits of decision makers, applied management is often needed because unaided human reasoning can produce mismatches between actions and goals (Kahneman, 2011). A useful high-level distinction is between ontological uncertainty—what we know—and epistemological uncertainty—how different areas of knowledge and "knowing" combine in decision making (van Asselt and Rotmans, 2002; Walker et al., 2003). Two other areas of relevance are ambiguity (Brugnach et al., 2008) and contestedness (Klinke and Renn, 2002; Dewulf et al., 2005), commonly encountered in wicked problems/systemic risks (Renn and Klinke, 2004; Renn et al., 2011).

Much of this uncertainty can be managed through framing and decision processes. For example, a predict-then-act framing is different to an assess-risk-of-policy framing (SREX Section 6.3.1 and Figure 6.2; Lempert

et al., 2004). In the former, also known as “top-down,” model or impacts-first, science-first, or standard approach, climate or impact uncertainty is described independently of other parts of the decision problem. For instance, probabilistic climate projections (see Figure 21-4 or WGI AR5 Chapters 11 and 12; Murphy et al., 2009) are generated for wide application, and thus are not tied to any specific choice. This follows the cause and effect model described in Section 2.1. The basic structure of IPCC Assessment Reports follows this pattern, with WGI laying out what is known and uncertain about current and future changes to the climate system. Working Groups II and III then describe impacts resulting from and potential policy responses to those changes (Jones and Preston, 2011).

In contrast, the “assess-risk-of-policy” framing (Lempert et al., 2004; UNDP, 2005; Carter et al., 2007; Dessai and Hulme, 2007) starts with the decision-making context. This framing is also known as “context-first” (Ranger et al., 2010); “decision scaling” (Brown et al., 2011); “bottom-up”; vulnerability, tipping point (Kwadijk et al., 2010); critical threshold (Jones, 2001); or policy-first approaches (SREX Section 6.3.1). In engaging with decision makers, the “assess-risk-of-policy” approach often requires information providers work closely with decision makers to understand their plans and goals, before customizing the uncertainty description to focus on those key factors. This can be very effective, but often needs to be individually customized for each decision context (Lempert and Kalra, 2011; Lempert, 2012) requiring collaboration between researchers and users (see Box 2-1). A “predict-then-act” framing is appropriate when uncertainties are shallow, but when uncertainties are deep, an “assess-risk-of-policy” framing is more suitable (Dessai et al., 2009).

The largest focus on uncertainty in CIAV has been on estimating climate impacts such as streamflow or agricultural yield changes and their consequent risks. Since AR4, the treatment of these uncertainties has advanced considerably. For example, multiple models of crop responses to climate change have been compared to estimate inter-model uncertainty (Asseng et al., 2013). Although many impact studies still characterize uncertainty by using a few climate scenarios, there is a growing literature that uses many climate realizations and also assesses uncertainty in the impact model itself (Wilby and Harris, 2006; New et al., 2007). Some studies propagate uncertainties to evaluate adaptation options locally (Dessai and Hulme, 2007) by assessing the robustness of a water company’s plan to climate change uncertainties or regionally (Lobell et al., 2008) by identifying which regions are most in need of adaptation to food security under a changing climate. Alternatively, the critical threshold approach, where the likelihood of a given criterion can be assessed as a function of climate change, is much less sensitive to input uncertainties than assessments estimating the “most likely” outcome (Jones, 2010). This is one of the mainstays of robustness assessment discussed in Section 2.3.3.

2.3.2. Scenarios

A scenario is a story or image that describes a potential future, developed to inform decision making under uncertainty (Section 1.1.3). A scenario is not a prediction of what the future will be but rather a description of how the future might unfold (Jäger et al., 2008). Scenario use in the CIAV research area has expanded significantly beyond climate into

broader socioeconomic areas as it has become more mainstream (*high confidence*) (Sections 1.1.3, 2.4.2.1). Climate change has also become a core feature of many scenarios used in regional and global assessments of environmental and socioeconomic change (Carpenter et al., 2005; Raskin et al., 2005). Scenarios can be used at a number of stages within an assessment process or can underpin an entire assessment. They serve a variety of purposes, including informing decisions under uncertainty, scoping and exploring poorly understood issues, and integrating knowledge from diverse domains (Parson et al., 2007; Parson, 2008).

Scenarios also contribute to learning and discussion, facilitate knowledge exchange, and can be expressed using a range of media. Local scale visualization of impacts and adaptation measures, depicted on realistic landscapes, is an emerging technology that is being tested to support dialog on adaptation planning at the local scale (Schroth et al., 2011; Sheppard, 2012). Although visual representations of scenario-based impact assessments may be available for a location, scenario-based adaptation assessments usually are not. Artistic depictions of potential adaptation measures and outcomes are being negotiated and assessed with local stakeholders in communities within Metro Vancouver, Canada (Shaw et al., 2009; Burch et al., 2010; Sheppard et al., 2011).

Climate, socioeconomic, or other types of scenarios are widely used to assess the impacts of climate change. Fewer studies report on the use of scenarios as participatory tools to enable decision making on adaptation (e.g., Harrison et al., 2013). However, the scenario literature emphasizes the importance of process over product. The new generation of climate and socioeconomic scenarios being developed from the Representative Concentration Pathways (RCPs; 1.1.3.1) and Shared Socioeconomic Pathways (SSPs; 1.1.3.2), which are storylines corresponding to the new RCPs (Moss et al., 2010; Kriegler et al., 2012) have yet to be applied within CIAV studies in any substantive way (van Ruijven et al., 2013; Ebi et al., 2014).

By separating risks into simple and systemic or wicked-problem risks, scenario needs for decision making can be better identified (*medium confidence*). For simple risks, if probabilities cannot be easily calculated then scenarios can be used to explore the problem, test for acceptable or unacceptable levels of risk, and illustrate alternative solutions for evaluation and testing. Wicked problems will need to be thoroughly scoped to select the most suitable decision-making process, with scenarios playing an important role. They may require separate applications of problem (exploratory or descriptive) and solution-based (normative or positive) scenarios or the development of reflexive scenarios, the latter being updated with new knowledge over time that may re-examine values and goals (van Notten, 2006; Wilkinson and Eidinow, 2008; Jones, 2012); these categories can also be structured as top-down, bottom-up, and interactive (Berkhout et al., 2013). Even if conditional probabilities can be used to illustrate climate futures, scenarios are needed to explore the solutions space involving strategic actions, options planning, and governance using process and goal-oriented methods (*high confidence*).

2.3.3. Evaluating Trade-offs and Multi-metric Valuation

Decision makers bring diverse aims, interests, knowledge, and values to CIAV decision making. With effective decision support, parties to a

decision can manage competing views by more clearly articulating their goals; understanding how various options affect trade-offs between goals; and making informed choices that participants regard as legitimate, salient, and credible (*high confidence*) (Cash et al., 2003). The decision theory, risk governance, and ethical reasoning literatures use two broad sets of criteria for decision making: outcome-based criteria focus on whether a decision is likely to meet specified goals; process-based criteria compare alternative actions according to the process by which a decision is arrived. In particular, decision process aims to help stakeholders choose between the risks, costs, and obligations being proposed (Morgan et al., 1990), including specified levels of risk tolerance. Such choices around risk tolerance, including acceptable levels of risk, are ethical choices (DesJardins, 2012; Nanda, 2012). Selection strategies informing context and process are described in Section 14.3.5. Decision criteria inform the discussions of adaptation options, planning, and economics in Chapters 14 to 17 and WGIII AR5 Chapter 2.

Multi-attribute decision theory (Keeney and Raiffa, 1993), or multi-criteria decision analysis (MCDA), provides the most general framework for assessing outcomes-based criteria. MCDA concepts and tools organize and display the implications of alternative decisions on differing objectives (e.g., cost and environmental quality), order and test preferences among trade-offs between potentially incommensurate objectives, and show how alternative processes for choosing options can lead to different decisions. Cost-benefit analysis under uncertainty, one key tool for evaluating trade-offs, is described in Section 17.3.2.1. Simple MCDA tools include scorecards that graphically display how alternative policy choices affect different goals. For example, the “burning embers” diagram displays how risks to various attributes (e.g., health of unique systems, extreme weather events) depend on targets for a given global mean temperature increase (Figure 19-5). More sophisticated MCDA tools can optimize a portfolio of choices in a variety of ways; for example, one recent method applies scenarios representing significant uncertainty to optimize between four or more choices in order to identify robust combinations and system vulnerabilities (Kasprzyk et al., 2013). Successful use of MCDA in CIAV decisions include the U.S. Bureau of Reclamation helping stakeholders with diverse interests and values to consider 26 alternative performance measures for the Colorado River system, to agree on potential climate-related risks, and to consider options for reducing those risks. Trade-offs also occur where adaptation measures produce negative impacts in other areas of value—for example, where adaptation in agricultural and urban areas negatively affect ecosystems (Section 4.3.3.3). Korteling et al. (2013) assess the robustness of adaptation options for six criteria including risk of water shortage, environmental impact, local self-sufficiency, cost, carbon footprint, and social acceptability. Chapter 17 describes many criteria commonly used in MCDA analyses.

Robustness is often nominated as the most appropriate criterion for managing large decision uncertainty. It is a satisficing (sufficient rather than optimal) criterion (Rosenhead, 1989) that seeks decisions likely to perform well over a wide range of plausible climate futures, socioeconomic trends, and other factors (Dessai and Hulme, 2007; Groves et al., 2008; Wilby and Dessai, 2010; WUCA, 2010; Brown et al., 2011; Lempert and Kalra, 2011). Robust decisions often perform better than other methods if the future turns out differently than expected. Testing for robustness can often illuminate trade-offs that help decision

makers achieve consensus even when they have different future expectations. Robust choices often trade some optimality for being able to manage unanticipated outcomes. Many forms of the precautionary principle are consistent with robustness criteria (Lempert and Collins, 2007). Flexible and reversible options are often needed to manage situations with significant potential for unanticipated outcomes and differences in values and interests among decision makers (Gallopín, 2006; Hallegatte, 2009; see also Sections 2.3.4, 5.5.3.1). Flexibility is signaled by reaching of specific management thresholds, critical control points, or design states (Box 5-1). The literature disagrees on the relationship between robustness and resilience (Folke, 2006). Chapter 20 describes resilience as a property of systems that might be affected by decision makers’ choices, while robustness is a property of the choices made by those decision makers (SREX Chapter 1).

Process-based criteria focus on the credibility and legitimacy of a decision process. Institutional (Section 2.2.2) and cultural and ethical (Section 2.2.1) contexts will strongly influence the appropriateness and importance of such criteria in a given situation (*high confidence*). Process criteria provide institutional rules, and governance for decision making in a wide range of circumstances (Dietz and Stern, 2008; Sen, 2009). For instance, many environmental laws require advanced notice and periods of public comment before any regulations are issued. Water rights can be made tradable, giving users extra flexibility during times of water shortage or oversupply. Participants may regard any decision that fails to respect such rights as illegitimate. In complex situations of a collaborative nature, both outcome and process-related criteria will be needed in a decision-making process (*high confidence*).

Stakeholder involvement is a central process for climate-related decision making and since the AR4 has grown in importance, particularly for adaptation decision making (e.g., Lebel et al., 2010), covering methods (Debels et al., 2009; Gardner et al., 2009; Salter et al., 2010; André et al., 2012) and reflecting concrete experiences with stakeholder involvement in CIAV assessments and adaptation processes (de la Vega-Leinert et al., 2008; Ebi and Semenza, 2008; Posthumus et al., 2008; Raadgever et al., 2008; Tompkins et al., 2008a,b; Preston et al., 2009). Lebel et al. (2010) differentiate six advantages of social learning and stakeholder involvement for adaptation to climate change: (1) reduces informational uncertainty; (2) reduces normative uncertainty; (3) helps to build consensus on criteria for monitoring and evaluation; (4) can empower stakeholders to influence adaptation and take appropriate actions themselves by sharing knowledge and responsibility in participatory processes; (5) can reduce conflicts and identify synergies between adaptation activities of various stakeholders, thus improving overall chances of success; and (6) can improve the likely fairness, social justice, and legitimacy of adaptation decisions and actions by addressing the concerns of all relevant stakeholders. Complex settings will require a detailed mapping of stakeholder roles and responsibilities (André et al., 2012).

2.3.4. Learning, Review, and Reframing

Effective decision support processes generally include learning, where learning and review become important to track decision progress (National Research Council, 2009b; see also Box 2-1, Figure 2-1). This can be achieved by developing an ongoing monitoring and review process

Frequently Asked Questions

FAQ 2.2 | Which is the best method for climate change decision making/assessing adaptation?

No single method suits all contexts, but the overall approach used and recommended by the IPCC is iterative risk management. The International Standards Organization defines risk as the effect of uncertainty on objectives. Within the climate change context, risk can be defined as the potential for consequences where something of human value (including humans themselves) is at stake and where the outcome is uncertain. Risk management is a general framework that includes alternative approaches, methodologies, methods, and tools. Although the risk management concept is very flexible, some methodologies are quite prescriptive—for example, legislated emergency management guidelines and fiduciary risk. At the operational level, there is no single definition of risk that applies to all situations. This gives rise to much confusion about what risk is and what it can be used for.

Simple climate risks can be assessed and managed by the standard methodology of making up the “adaptation deficit” between current practices and projected risks. Where climate is one of several or more influences on risk, a wide range of methodologies can be used. Such assessments need to be context-sensitive, to involve those who are affected by the decision (or their representatives), to use both expert and practitioner knowledge, and to map a clear pathway between knowledge generation, decision making, and action.

during the scoping stage of a project or program. If circumstances change so much that desired outcomes may not be achieved, then reframing of the decision criteria, process, and goals may be required. This iterative approach begins with the many participants to a decision working together to define its objectives and other parameters, working with experts to generate and interpret decision-relevant information, then revisiting the objectives and choices based on that information (Figure 2-1). Again, process is important. Pelling et al. (2008) found that accounting for different personal values in both an official and informal capacity could enhance social learning and therefore adaptive capacity. Measuring progress on adaptation and adaptive capacity by tracking impacts, vulnerability, and related adaptation metrics and process indicators is discussed in Section 14.6. Such metrics are needed to transfer wider learning on adaptation to new situations.

Learning and review can range from periodic reporting to adaptive management. Adaptive management refers to a choice of policy required to generate reliable new information (Holling, 1978, 1996) and involves a process of adjusting approaches in response to observations of their effect and changes in the system brought on by resulting feedback effects and other variables (Glossary). Adaptive strategies are designed to be robust over a wide range of futures by evolving over time in response to new information (Rosenhead, 1989; Walker et al., 2001; Lempert and Schlesinger, 2002; Swanson et al., 2006). Necessary components include separating immediate actions from those that can be deferred (and that may require additional information); an explicit process to generate new information; institutional mechanisms for incorporating and acting on new information; and some understanding of the policy limits that, if exceeded, should lead to its re-evaluation (Swanson et al., 2012; see also Box 5-1). As indicated by Figure 2-1, effective decision making not only requires flows of appropriate information but people willing and able to act on it. Though most policies change over time, very few follow the steps of an intentional adaptive strategy (*high confidence*). For instance, McCray et al. (2010) surveyed 32 examples of U.S. environmental, health, and safety

regulations—all legally required to be adaptive—and found only five instances where any policy change occurred as intended.

Reframing of an action can occur when an existing set of decisions and actions are failing to manage risks adequately (see Box 2-1). Based on experience to date, there now exists a sufficiently rich set of available methods, tools, and processes to support effective CIAV decisions in a wide range of contexts (*medium confidence*), although they may not be combined appropriately, accessible, or readily used by decision makers (Webb and Beh, 2013). Tools for decision making, planning and development, and transfer and diffusion are discussed in Section 15.4.

2.4. Support for Climate-related Decisions

Growing understanding of the aspects of decision making (Section 2.2) and methods and tools (Section 2.3) have led to improved support for CIAV decisions, as shown by the provision of climate information and services (Section 2.4.1), methods for impacts and vulnerability assessments (Section 2.4.2), and decision support in practice (Section 2.4.3). Figure 2-3 divides the decision-making process into four stages: scoping, analysis, implementation and review, outlining institutional, leadership, knowledge, and information characteristics for each stage. Most effort in CIAV research has been put into the first two stages, whereas decision implementation and follow-up have been minimal. This does not imply that the analysis stage is discounted. Problem analysis and solution evaluation are significant undertakings in any decision process, but that is where most current climate change assessments stop. Note that each of these stages can be divided into other quite distinct process elements.

2.4.1. Climate Information and Services

Climate services are institutions that bridge generation and application of climate knowledge. History and concepts are described in Section

Box 2-1 | Managing Wicked Problems with Decision Support

A well-designed decision support process, combined with favorable political conditions, can effectively address “wicked” (Section 2.1) decision challenges. The State of Louisiana faces a serious problem of coastal land loss, exposing the region’s fisheries and heightening the risk of storm surge damage to the City of New Orleans, one of the USA’s largest ports with facilities that account for ~20% of U.S. oil and gas production (Coastal Protection and Restoration Authority, 2007). Previous efforts at comprehensive coastal protection had been stymied by, among other factors, numerous competing jurisdictions and stakeholders with a wide range of conflicting interests.

In the aftermath of Hurricane Katrina, the state embarked on a new coastal planning effort, this time with extensive decision support. The Coastal Protection and Restoration Authority organized an extension decision support effort with a network of research institutions interacting with a 33-member stakeholder group consisting of representatives from business and industry; federal, state, and local governments; non-governmental organizations; and coastal institutions. In dozens of workshops over the course of 2 years, these stakeholders influenced the development of and interacted with a decision support system consisting of (1) a regional model that integrated numerous strands of scientific data into projections of future flood risk (Fischbach et al., 2012) and (2) a multi-attribute planning tool that allowed stakeholders to explore the implications of alternative portfolios of hundreds of proposed risk reduction projects over alternative sea level rise scenarios (Groves et al., 2012). This decision support system allowed decision makers and stakeholders to first formulate alternative risk reduction plans then to visualize outcomes and trade-offs up to 50 years into the future.

The resulting Master Plan for a Sustainable Coast passed the state legislature by a unanimous vote in May 2012. Deviating strongly from past practice, the plan allocates far more resources to restoring natural barriers than to structural measures such as levees. The plan balances the interests of multiple stakeholders and contains some projects that offer near-term benefits and some whose benefits will be largely felt decades from now. Observers recognized that extensive analytic decision support contributed significantly to this plan.

2.4.1.1, how decision support applied in Section 2.4.1.2, and the policy implications of climate services as a global practice in Section 2.4.1.3. These institutions supply climate information on local, regional, national, and global scales for the monitoring of risks, mitigation, and adaptation planning as an important component of sustainable development (Sivakumar et al., 2011). The Global Framework for Climate Services (Hewitt et al., 2012) aims to “enable better management of the risks of climate variability and change and adaptation to climate change, through the development and incorporation of science-based climate information and prediction into planning, policy, and practice on the global, regional, and national scale” (http://www.wmo.int/pages/gfcs/index_en.php). Climate services focus on the connection between climate science and the public demand for information; however, their development and deployment needs support from many other disciplines (Miles et al., 2006). This extended reach requires measures such as case-specific communication, engagement, and knowledge exchange skills (*high confidence*).

While many countries have already established national and regional climate services or are on the way to doing so, they show significant differences. The development of Regional Climate Services in the USA and parts of Europe, with their increasing focus on communication and decision support, is well documented (DeGaetano et al., 2010; von Storch et al., 2011). Developing countries are becoming increasingly aware of the need for climate services (Semazzi, 2011), which is in part reflected in the migration of regional climate models into those countries. In 2001 only around 21 (mostly Organisation for Economic Co-operation and Development (OECD)) countries were running regional climate models (RCMs), but today more than 100 countries are trained in using the Providing REgional Climates for Impact Studies (PRECIS) RCM (Jones et al., 2004; Edwards, 2010). Regional climate services are expanding geographically, shifting from simple understandings of climate cause and effect to ever more complex and wicked problem situations and are becoming more interdisciplinary.

2.4.1.1. Climate Services: History and Concepts

Early climate services in North America were seen as an expansion of weather services, dealing mainly with forecasts, seasonal outlooks, and risk assessment in a mostly stationary but variable climate (Changnon et al., 1990; Miles et al., 2006; DeGaetano et al., 2010). This mainly technical outlook had limited effectiveness; for example, decision makers had difficulties understanding and using climate data for planning purposes (Changnon et al., 1990; Miles et al., 2006; Visbeck, 2008) and the data were slow to access and of poor quality (Changnon et al., 1990). As these services developed, formal definitions of their mission and scope shifted to being user-centric, focusing on active research, data stewardship and effective partnership (National Research Council, 2001). Climate services were understood as a clearinghouse and technical access point to stakeholders, providing education and user access to experts—the latter informing the climate forecast community of information needs, largely to inform adaptation (Miles et al., 2006).

Downscaling is a key product demanded by users for decision making (Section 21.3.3.2). For example, in Africa, regional climate models play an increasing role in Regional Climate Outlook Forums arranged by the

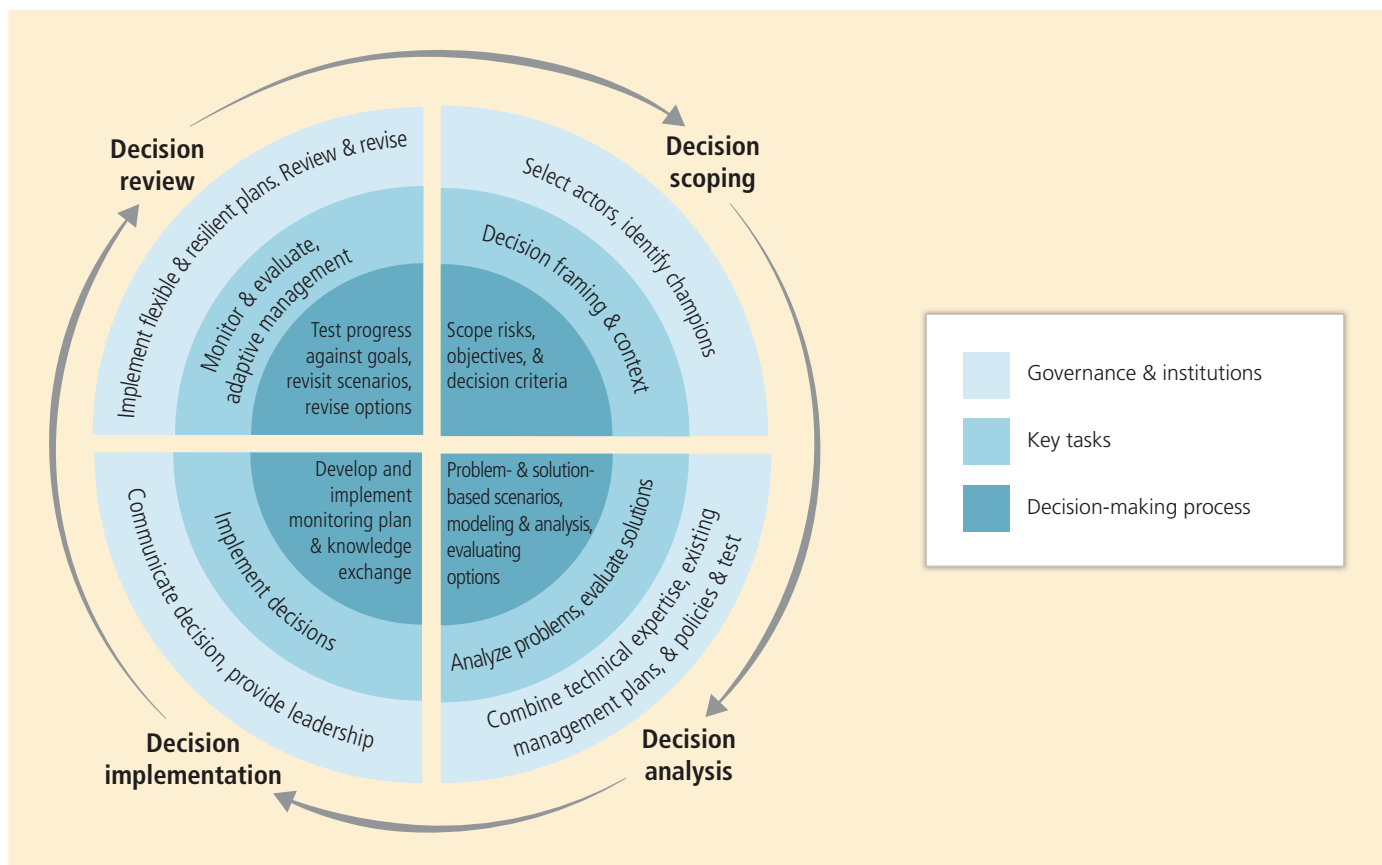


Figure 2-3 | Four-stage process of decision making. Note that while adaptive management is located in the decision review quadrant here, when applied it will influence the entire process.

World Meteorological Organization (WMO). The Global Framework for Climate Services was created in order to coordinate and strengthen activities and develop new infrastructure where needed, focusing on developing countries (WMO, 2011; Hewitt et al., 2012). From initially being supply-focused and static, public climate services increasingly need communication skills, engagement, and knowledge exchange in a highly challenging environment of technical and institutional networks, monitoring systems, and collaborations with other institutions, stakeholders, and decision makers (DeGaetano et al., 2010).

2.4.1.2. Climate Services: Practices and Decision Support

Decision support is generally acknowledged as an integral part of climate services (*high confidence*) (Miles et al., 2006; DeGaetano et al., 2010). Depending on the stage and context in question (see Section 2.1.3.), “best” data as framed by experts should be reconciled with user needs in order to produce scientific information that is relevant and suitable for decision making. Social and cultural determinants have to be taken into account (see Section 2.2) and require the communication of scientific data to be context-specific. Decision support for climate services consists of “processes of interaction, different forms of communication, potentially useful data sets or models, reports and training workshops, data ports and websites, engaging any level of governance, at any stage in the policy- or decision-making process” (Moser, 2009, p. 11). The climate service is a “process of two-way

communication” and “involves providing context that turns data into information” (Shafer, 2004). Capacity building is required on all sides of the communication process. For regional climate services, a successful learning process engages both users and providers of knowledge in knowledge exchange. For example, the uptake and utility of climate forecasts in rural Africa is described in Box 9-4.

As knowledge brokers, climate services have to establish an effective dialog between science and the public (von Storch et al., 2011). This dialog undertakes two main tasks: One is to understand the range of perceptions, views, questions, needs, concerns, and knowledge in the public and among stakeholders about climate, climate change, and climate risks; the other task is to convey the content of scientific knowledge to the public, media, and stakeholders. This includes communicating the limitations of such knowledge, the known uncertainties, and the unknowable, as well as the appropriate role of science in complex decision processes (von Storch et al., 2011).

2.4.1.3. The Geo-political Dimension of Climate Services

Climate knowledge is continually being documented and assessed by the social sciences within a policy-relevant context (Yearley, 2009; Grundmann and Stehr, 2010). One focus is on the spread of climate knowledge into developing countries. Climate models distributed to users with no in-house capacity for model development build capacity in

regional climate science, producing high-resolution data for local decision making. This mobility of knowledge has far-reaching implications for how climate knowledge is produced; strengthening the influence of epistemic communities such as the IPCC and other global governance mechanisms (Mahony and Hulme, 2012). Thus, while regional climate models play an increasingly important role in decision-making processes, critics argue that climate monopolizes planning and development strategies, rendering other forms of knowledge subordinate to this “climate reductionism” (Dessai et al., 2009; Hulme, 2011).

Indigenous forms of knowledge—including the specialized knowledge of any stakeholder—are becoming increasingly relevant for climate services (*high confidence*) (Strauss and Orlove, 2003; Crate and Nuttal, 2009; Crate, 2011; Ulloa, 2011; Krauss and von Storch, 2012). Local forms of knowledge and scientific climate models are not necessarily mutually exclusive; individual case studies show how both forms of knowledge contribute jointly to place-based adaptation (Strauss and Orlove, 2003; Orlove and Kabugo, 2005; Orlove, 2009; Strauss, 2009; Orlove et al., 2010). Indigenous knowledge in the form of oral histories and other traditional knowledge are being compared or combined with remote sensing technologies and model-based scenarios to co-produce new knowledge, and to create a new discourse on adaptation planning (Nakashima et al., 2012; see also Table 15-1). The challenge will be to collaborate in a way that enables their integration into a shared narrative on future adaptation choices.

These examples show that adaptation needs both to be implemented locally and to be informed by larger scale (inter-)national policies and directions. One strategy will not suit every location. Endfield (2011) argues for a “reculturing and particularizing of climate discourses” in order to successfully localize global and scientific meta-narratives. Climate service development combines very different types of knowledge and the social, cultural, and communication sciences play a decisive role in this process (Pidgeon and Fischhoff, 2011; von Storch et al., 2011). To position itself and to react according to the diverse demands, science-based climate services have to become “rooted in society” (Krauss, 2011). The climate science community does not necessarily take the lead, but becomes part of an inter- and trans-disciplinary process, where politics, culture, religion, values, and so forth become part of climate communication (*medium confidence*).

2.4.2. Assessing Impact, Adaptation, and Vulnerability on a Range of Scales

CIAV assessments address the “adapt to what” question, which can enable a dialog among practitioners, stakeholders, and the public on planning and implementation of adaptation measures within prevailing mechanisms for governance. To date, however, assessments have focused more on I than A (see Figure 1-1d). A number of global initiatives are taking place to enable knowledge generation, transfer, and use, including the Programme of Research on Climate Change Vulnerability, Impacts and Adaptation (PROVIA; <http://www.provia-climatechange.org/>), the Nairobi Work Programme on impacts, vulnerability, and adaptation to climate change (http://unfccc.int/adaptation/nairobi_work_programme/items/3633.php), and work by the World Bank and regional development banks (<http://climatechange.worldbank.org/>).

2.4.2.1. Assessing Impacts

For scenario-based impact assessments to contribute to vulnerability and risk assessment, a series of translations need to be performed. Scenarios of projected GHG concentrations are converted to changes in climate, impacts are assessed, perhaps with autonomous adaptation, leading to the evaluation of various adaptation options. This series of translations requires the transformation of data across various scales of time and space, between natural and social sciences, utilizing a wide variety of analytical tools representing areas such as agriculture, forestry, water, economics, sociology, and social-ecological systems. Climate scenarios are translated into scenarios or projections for biophysical and socioeconomic impact variables such as river flow, food supply, coastal erosion, health outcomes, and species distribution (e.g., European Climate Adaptation Platform, <http://climate-adapt.eea.europa.eu>). Climate services help establish and support the translation process (Section 2.4.1).

The resulting climate impacts and risks are then subject to decision making on risk management and governance. Assessments of observed events combine biophysical and socioeconomic assessments of the past and present (Table 2-1, top row). Most scenario-based assessments superimpose biophysical “futures” onto present-day socioeconomic conditions (Table 2-1, middle row). This is useful for assessing how current socioeconomic conditions may need to change in response to biophysical impacts but raises inconsistencies when future socioeconomic states are out of step with biophysical states. This will hamper assessments of future adaptation responses in coupled social-ecological systems (see Chapter 16). An important challenge, therefore, is to construct impact assessments in which biophysical futures are coupled with socioeconomic futures (Table 2-1, bottom row). A new set of socioeconomic futures, known as Shared Socioeconomic Pathways (SSPs), which are storylines corresponding to the new RCPs (Moss et al., 2010; Kriegler et al., 2012), is being developed to assist this process (Section 1.1.3.2).

A new generation of assessments links biophysical, economic, and social analysis tools in order to describe the interactions between projected biophysical changes and managed systems. For example, Ciscar et al. (2011) estimated the costs of potential climate change impacts, without public adaptation policies, in four European market sectors (agriculture, river floods, coastal areas, and tourism) and one nonmarket sector

Table 2-1 | Nature of published Impact, Adaptation, and Vulnerability (IAV) assessments.

Nature of IAV assessments	Biophysical conditions	Socioeconomic conditions
Stationarity and extrapolation	Continuation of current trends; no change in statistical properties	No change from current conditions
Transitional	Scenario-based projections of future biophysical conditions	No change from current conditions; sometimes sensitivity analysis with alternate futures
Coupled and interactive	Scenario-based projections of future biophysical conditions	Alternative futures from scenarios/storylines consistent with biophysical projections, sometimes with dynamic response



(human health). A similar study in the UK was conducted for tourism, health and transportation maintenance, buildings and transportation infrastructure, and residential water supplies (Hunt, 2008). In the USA, Backus et al. (2013) assessed national and state level gross domestic product (GDP) and employment impacts, incorporating direct impacts on water resources, secondary impacts on agriculture and other water interests, and indirect impacts through interstate migration of affected populations. Decision support tools are being integrated into scenario-based impact and adaptation assessments. For example, the Water Evaluation and Planning System model has been used to assess a community water system in British Columbia, Canada (Harma et al., 2012). Incorporation of stakeholder dialog processes within scenario construction (Parson, 2008) and Participatory Integrated Assessment (Salter et al., 2010) enables inclusion of local knowledge as part of scenario-based assessments.

2.4.2.2. Assessing Vulnerability, Risk, and Adaptive Capacity

The adaptation to climate change, disaster risk management, and resilience literatures all address the concept of vulnerability, defined as a susceptibility to loss or damage (Adger, 2006; Füssel, 2007), or the propensity or predisposition to be adversely affected (Glossary). Within IPCC AR4, Schneider et al. (2007) identified vulnerabilities that might be considered “key,” and therefore potentially “dangerous” (see Glossary). Criteria denoting a key vulnerability include its magnitude and timing, persistence, and reversibility, and the likelihood and confidence that the contributing event(s) would occur (Sections 19.2.5, 19.6). Other criteria include the importance of a location or activity to society and society’s exposure to potential loss and its capacity to adapt. Adaptive capacity has been defined as the ability to adjust, to take advantage of opportunities, or to cope with consequences (Adger et al., 2007; see also Glossary). However, adaptive capacity is context-specific, related to both availability of resources, capacity to learn, and governance measures (Gupta et al., 2010; see also Section 14.5). Actions that illustrate how adaptive capacity and climate resilience can be mutually reinforcing include disaster risk management (Sections 2.5.2, 15.3.2, 16.7.2) and “triple-win” interventions where adaptation, mitigation, and sustainable development goals are integrated so as to find climate-resilient pathways (Sections 20.3.3, 20.4.2).

The concept of an “adaptation deficit” (Burton and May, 2004) is applicable to cases such as Hurricane Katrina (Committee on New Orleans Regional Hurricane Protection Projects, 2009; Freudenberg et al., 2009; Box 2-1) or the 2003 European heat wave (Haines et al., 2006) where substantial vulnerability follows a climate event. An adaptation deficit represents a gap between an existing state of adaptation and an idealized state of adaptation where adverse impacts are avoided (Chapter 17; Glossary). The adaptation deficit has also been related to “residual impacts,” which occur due to insufficient adaptation to current or future climate (IPCC, 2007a). Within developing countries, Narain et al. (2011) consider the adaptation deficit as being part of a larger “development deficit.” Cardona et al. (2012) cite other “deficit” indicators, including a Disaster Deficit Index (extreme event impact combined with financial ability to cope), structural deficit (low income, high inequality, lack of access to resources, etc.), and a risk communication deficit. Maladaptation occurs where a short-term

response inadvertently leads to an increase in future vulnerability (Glantz, 1988; Barnett and O’Neill, 2010; McEvoy and Wilder, 2012). Barriers unrelated to scientific knowledge can hamper effective decision making (Adger and Barnett, 2009; Berrang Ford et al., 2011). This may help to explain why some extreme events create surprising levels of damage within developed countries.

The assessment of potential future damages and loss requires approaches that link biophysical and socioeconomic futures. An example is the assessment of climate change effects on human health, including research-to-decision pathways, monitoring of social vulnerability indicators and health outcomes (English et al., 2009; Portier et al., 2010), and tools for enabling adaptive management (Hess et al., 2012). Examples of regional scale scenario-based vulnerability assessments are case studies for North Rhine-Westphalia in Germany (Holsten and Kropp, 2012) and agriculture in Mexico (Monterroso et al., 2012). An example of a larger scale study is a vulnerability assessment of ecosystem services for Europe, in which future adaptive capacity was based on indicators from the *Special Report on Emission Scenarios* (SRES) storylines (Metzger and Schröter, 2006). Difficulty in separating the relative influences of changing climate and development patterns hampers assessments of observed trends in property damage caused by atmospheric extreme events. Recent increases in economic losses may be due to changes in probabilities of extreme events, changes in human development patterns (more people in harm’s way) without changes in climatic extremes, or a combination of both (Pielke, 1998; Mills, 2005; Munich Re Group, 2011). IPCC (2012) concluded that increasing exposure has been the major cause, but a role for climate change has not been excluded.

Development choices taken in the current or near term can potentially influence future vulnerability to projected climate change, hence interest in the study of emergent risks (Sections 19.3, 19.4). Interactions between development pathways, and climate change impacts and responses, could create situations with little or no precedent. Assessments based on gradual shifts in mean conditions could underestimate future risk and consequent damage, suggesting the need for process-based methodologies that focus on enhancing resilience (Jones et al., 2013; see also Sections 2.5.2, 20.2.3). An example of assessing this type of risk, and the costs and benefits of potential adaptation responses, is a resilience assessment framework for infrastructure networks (Vugrin et al., 2011; Turnquist and Vugrin, 2013).

2.4.3. Climate-Related Decisions in Practice

Implementation of adaptation actions, resilience strategies and capacity building can take place as stand-alone actions or be integrated into other management plans and strategies. Recent literature on potential climate change effects on natural resources, public health, and community planning and management is reviewed in Chapters 3 to 12. As the complexity of management challenges increases due to climate change, development, and other pressures, a range of reflexive decision-making processes are emerging under the general topics of adaptive management, iterative risk management, and community-based adaptation (e.g., Section 5.5.4.1). However, there are few assessments of adaptation delivery and effectiveness (Section 15.6). Cross-sectoral integrated approaches such as Integrated Water Resources Management (IWRM),

sustainable forestry management (SFM), and Integrated Coastal Zone Management (ICZM) are viewed as being more effective than stand-alone efforts (Section 16.5.1).

Adaptive approaches to water management can potentially address uncertainty due to climate change (Section 3.6.1) but there is a limited number of examples in practice (Section 3.6.4). Examples of recent strategies include an IWRM roadmap prepared for the state of Orissa, India (Jönch-Clausen, 2010) and seven cases in the USA (Bateman and Rancier, 2012), some of which are applying adaptive water management using a scenario-based experimental approach intending to align with IWRM and promote resilience. Adaptations in urban systems following integrated urban water management principles are becoming widespread (Section 8.3.3.4) and in rural systems are more advanced in developed countries and less so in developing countries, especially those within transboundary basins (Sections 9.4.3.2, 24.4.1.5, 24.4.2.5, 25.5.3, 26.3.3, 27.3.1.2, 27.3.2.2).

Adaptation in agriculture ranges from small adjustments made to current activities through to transformative adaptations across whole systems (Sections 7.5.1, 9.4.3.1, 22.4.5.7, 23.4.1, 24.4.4.5, 25.7.2, 26.5.4, 27.3.4.2). Diversified systems are more resilient with some diversification coming from off farm sources (Section 9.4.3.1). There are few unequivocal adaptations to climate, but the development of adaptive capacity is more widespread (Section 7.5.1.2). Adaptation in forestry has expanded since the AR4 (Section 9.4.3.3) and is aiming to develop toward SFM by focusing on biological diversity, productive and protective functions of forests, maintenance of their social and economic benefits, and governance (McDonald and Lane, 2004; Wijewardana, 2008; Montréal Process, 2009). Although SFM is still largely an abstract concept (Seppälä et al., 2009), managing climate change risks is seen as necessary for achieving its objectives (Montréal Process, 2009). Governments and companies are also considering assisted migration of forest species as an adaptation strategy (Pedlar et al., 2012) and payment for ecosystem services is becoming more common (Section 9.4.3.3). Sustainable Fisheries Management has long-term ecological and productivity goals (FAO, 2013) but climate change has generally not been included in strategic guidance for fisheries management (Brander, 2010). Ecosystem-based approaches to management (e.g., Zhou et al., 2010) and transformative approaches will be required (Sections 7.5.1.1.2, 9.4.3.4). Sustainable livelihoods approaches are also being applied for populations dependent on marine resources (Sections 9.4.3.4, 30.6.2.1; Table 30-2).

National Adaptation Programmes of Action (NAPA) for least-developed countries (LDCs) are designed to be flexible, action-oriented, and country-driven (UNFCCC, 2009). Key preparatory steps include the synthesis of available information on vulnerability and impacts via extensive public participation (see Chapter 14). The NAPA process has assisted LDCs to assess climate sensitive sectors and prioritize projects to address the most urgent adaptation issues (Lal et al., 2012; UNFCCC, 2012). Integrating NAPAs with other socioeconomic programs can help develop resilience. However, although many countries have linked their NAPAs with development programs, Hardee and Mutunga (2010) argue that they have had limited success in aligning the NAPA priorities with existing national priorities such as population growth. To this end, scaling up and institutionalization of the NAPA process has commenced.

Under the Cancun Adaptation Framework, a process was established that enables LDCs to formulate and implement National Adaptation Plans (NAPs) building upon the NAPA experience (UNFCCC, 2013). The NAP's main objectives are to identify vulnerabilities and medium- and long-term adaptation needs, and to develop and implement strategies and programs to address those needs and also to mainstream climate change risks. The NAPs are also an opportunity to align with other global initiatives such as the Millennium Development Goals and Hyogo Framework for Action.

Many developed countries are developing adaptation strategy documents at different scales of governance (European Environmental Agency, 2013). Biesbroek et al. (2010) analysed National Adaptation Strategies (NAS) of nine European nations, examining their decision making aspects and finding both "top-down" and "bottom-up" (delegation of authorities to local governments) approaches. Dissemination of information on weather, climate, impacts, vulnerability, and scenarios was found to be a critical element for adaptation decision making.

Climate risk is being increasingly factored into existing decision-making processes (Section 15.2.1). For example, learning from the 2003 heat waves that killed some 35,000 people across Europe, many European countries have implemented health-watch warning systems (Alcamo et al., 2007; WHO, 2008). Vietnam has initiated large-scale mangrove restoration and rehabilitation programs with the support of international institutions to protect coastal settlements and aquaculture industry (World Resources Institute et al., 2011). The Tsho Rolpa glacier lake in Nepal was at the risk of outburst due to glacial melt (Adger et al., 2007) so the Government of Nepal introduced both short- and long-term measures to prevent the outburst flood event (World Resources Institute et al., 2011). In many ways, local government is at the coal face of adaptation decision making (Pelling et al., 2008; Measham et al., 2011; Roberts et al., 2012). Municipal governments are incorporating climate change adaptation planning within municipal planning instruments, including energy and water system design, disaster risk reduction, and sustainability plans (Ford and Berrang-Ford, 2011; Rosenzweig et al., 2011). In human health, two main areas of benefit are occurring through improvements in current health patterns being exacerbated by changing climate and in reducing pollutants associated with co-pollutants of GHG emissions (Sections 11.7, 11.9). Climate is being increasingly recognized as a component of human conflict and insecurity, so is becoming a factor in governance arrangements affecting security and peace building programs (Section 12.5).

Details of adaptation planning within urban and rural settlements are addressed in Chapters 8 and 9, respectively. In urban settlements, adaptations are occurring in areas of energy, water, transport, housing, and green infrastructure (Section 8.3.3) but opportunities for broader integration into planning and the urban economy are largely being missed (Section 8.4). The overall status of adaptation implementation is assessed in Chapter 15. Although there is a rapidly growing list of adaptation plans being generated at multiple scales, an evaluation of adaptation plans from Australia, UK, and the USA suggests they are under-developed (Berrang Ford et al., 2011). These plans reflect a preference for capacity building over delivery of specific vulnerability-reduction measures, indicating that current adaptation planning is still informal and ad hoc (Preston et al., 2011; Bierbaum et al., 2013).

Frequently Asked Questions

FAQ 2.3 | Is climate change decision making different from other kinds of decision making?

Climate-related decisions have similarities and differences with decisions concerning other long-term, high-consequence issues. Commonalities include the usefulness of a broad risk framework and the need to consider uncertain projections of various biophysical and socioeconomic conditions. However, climate change includes longer time horizons and affects a broader range of human and Earth systems as compared to many other sources of risk. Climate change impact, adaptation, and vulnerability assessments offer a specific platform for exploring long-term future scenarios in which climate change is considered along with other projected changes of relevance to long-term planning.

In many situations, climate change may lead to non-marginal and irreversible outcomes, which pose challenges to conventional tools of economic and environmental policy. In addition, the realization that future climate may differ significantly from previous experience is still relatively new for many fields of practice (e.g., food production, natural resources management, natural hazards management, insurance, public health services, and urban planning).

Capacity barriers have hampered the transition from planning to implementation, so only a small number of jurisdictions have been successful at implementing adaptation measures (Section 15.2). However, there has been growth in community-based adaptation initiatives (Baer and Risbey, 2009; Rudiak-Gould, 2011; Sections 15.1, 15.2, 15.5, 15.6).

Various enabling factors for implementation have been identified in stakeholder engagement processes. Such factors include access to resources and sharing observations, language specific information, and ICT tools (e.g., wireless sensor networks, geographic information systems and web-based tools) that increase local awareness, allowing for good public understanding of stresses, risks, and trade-offs (Section 15.4.2). These factors allow new strategies to be explored, evaluated, and implemented (Shepherd et al., 2006; Hewitt et al., 2013). Enabling factors also include customized impact and vulnerability assessments for communities of interest and local practitioners who would serve as champions for adaptation planning, and the existence of local social influences/networks and capacity that enable long-term strategic planning and mainstreaming (Gardner et al., 2009; Cohen, 2010). These factors are further discussed in Chapters 15 and 16. Local government officials often lack training on climate change adaptation and require capacity to be built in a number of areas. To assist this process, guidebooks have been produced, framing the process of adaptation planning as both a team-building and project management exercise, activities that are already part of usual practice (Snover et al., 2007; Bizikova et al., 2008; ICLEI Oceania, 2008; CARE International in Vietnam, 2009; Ayers et al., 2012). Practitioner engagement in decision “games” can offer another training resource (Black et al., 2012).

2.5. Linking Adaptation with Mitigation and Sustainable Development

2.5.1. Assessing Synergies and Trade-offs with Mitigation

Capacities to adapt to and mitigate climate change are broadly similar. Opportunities for synergies are particularly relevant for the agriculture,

forestry, urban infrastructure, energy, and water sectors (Chapters 3, 4, 7 to 10). The IPCC AR4 (Klein et al., 2007) concluded that a lack of information made it difficult to assess these synergies. Assessing the synergies and trade-offs that face both adaptation and mitigation is an important goal of the new IPCC scenario process (Kriegler et al., 2012; O’Neill et al., 2014). These synergies and trade-offs between adaptation and mitigation are illustrated in Figure 2-4. The negatives associated with “adaptive emissions” or “new vulnerabilities” arising from mitigation do not necessarily mean that such measures should not be contemplated, but they do need to be assessed within a larger portfolio of actions where losses and gains have been sufficiently well quantified (Section 19.7). Limits of adaptation emphasize the different reach of adaptation and mitigation in managing climate risks (Sections 16.6, 19.7.5).

Mitigation can affect, for example, water resources (Section 3.7.2.1), terrestrial and freshwater ecosystems (Sections 4.4.4, 19.3.2.2), agriculture (Sections 19.3.2.2, 19.4.1), and livelihoods and poverty (Section 13.3.1), and will in turn be affected by changes in water resources (Section 3.7.3.2) and terrestrial ecosystems (Sections 4.3.3.1, 4.2.4.1). Adaptation actions for agriculture generally tend to reduce emissions (Section 7.5.1.4). Potential losses of human security associated with climate policy are discussed in Sections 12.5.2 and 19.4.2.2. Recent literature on potential interactions between mitigation and adaptation is reviewed in Sections 16.4.3, 19.7.1, 19.7.2, 19.7.3, 19.7.4, and 19.7.5. Chapter 20 discusses the relationship between adaptation, mitigation, and sustainable development including sustainable risk management (Section 20.3.3).

2.5.2. Linkage with Sustainable Development: Resilience

The idea that climate change response and sustainable development should be integrated within a more holistic decision framework was assessed in IPCC AR4 (Robinson et al., 2006; Klein et al., 2007; Yohe et al., 2007). Practical aspects of this integration are being tested as decision makers endeavor to incorporate adaptation measures within official long-term development plans (Section 15.3.3). A typical example

is the engagement of researchers and practitioners (planners, engineers, water managers, etc.) in scenario-based exercises to build local capacity to plan for a wide range of climate outcomes (Bizikova et al., 2010). Development can yield adaptation co-benefits if climate change is factored into its design (Sections 17.2.7.2, 20.3, 20.4).

Resilience is the capacity to change in order to maintain the same identity (see Glossary) and can be assessed through participatory research (Tyler and Moench, 2012) or through system modelling. Chapter 20 examines climate-resilient pathways, which are development trajectories of combined mitigation and adaptation to realize the goal of sustainable development while meeting the goals of the UNFCCC (Box 20-1). An example of resilience assessment at the landscape scale is in the Arctic, where local sources of important productivity and biodiversity are being mapped and their future capacity in supporting larger ecoregions under climate change is being assessed (Christie and Sommerkorn, 2012). An industry example covers the resilience analysis of supply chains, specifically petrochemical supply chains exposed to a hurricane in the southeastern USA (Vugrin et al., 2011). For urban areas, Leichenko (2011) categorize four types of urban resilience studies: (1) urban ecological resilience, (2) urban hazards and disaster risk reduction, (3) resilience of urban and regional economies, and (4) urban governance and institutions. Boyd et al. (2008) promote resilience as a way of guiding future urbanization that would be better “climatized.” The Asian Cities Climate Change Resilience Network is applying a resilience planning framework, with attention given to the role of agents and institutions (Tyler and Moench, 2012).

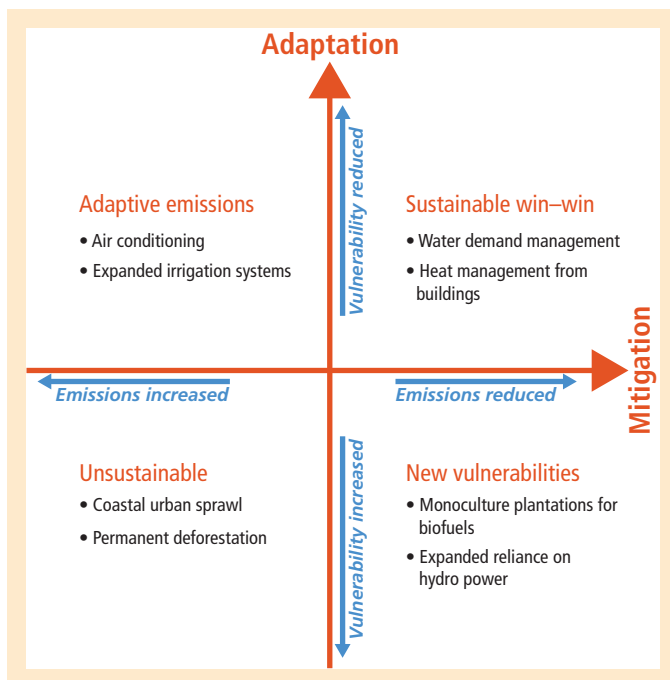


Figure 2-4 | Examples of adaptation (A); mitigation (M) trade-offs and synergies (adapted from Cohen and Waddell, 2009). The upper right quadrant (sustainable win-win) illustrates synergies in which actions enable the achievement of both adaptation and mitigation goals. The lower left quadrant (unsustainable) shows the opposite condition. The upper left (adaptive emissions) and lower right (new vulnerabilities) quadrants illustrate trade-offs that can result from actions within particular local-regional circumstances.

Adaptive capacity is seen as an important component of resilience on a range of scales (Sections 2.1.1, 2.2.3, 2.3.4, 2.4.2, 20.3). Local cases, such as King County (Seattle) USA, illustrate the importance of researcher-practitioner collaboration for knowledge exchange (Snover et al., 2007) and iterative and reflexive processes that enable local ownership, and adjustment to new information and evaluation of actions taken (Saavedra and Budd, 2009). However, in regions with high and chronic poverty, coupled with low awareness of global change drivers, adaptation as a process is not well understood and tools that enable anticipatory learning are lacking (Tschakert and Dietrich, 2010).

The normative concept of sustainable adaptation has been proposed to manage adaptation’s unintended consequences (Eriksen et al., 2011). It considers effects on social justice and environmental integrity, challenging current (unsustainable) development paths rather than seeking adjustments within them. This concept recognizes the role of multiple stressors in vulnerability, the importance of values in affecting adaptation outcomes (Section 2.2.1), and potential feedbacks between local and global processes. Little is known about the long-term effects of adaptation on livelihoods and poverty (Section 13.3.2) although focusing on poverty alleviation as part of adaptation is thought to build capacity (Sections 13.4.1, 13.4.2).

The Hyogo Framework for Action on disaster risk reduction considers climate change as an underlying risk factor, and promotes the integration of risk reduction and climate change adaptation (UNISDR, 2007, 2011; see also Section 15.3.2). Social development is being integrated with disaster risk management in order to enhance adaptive capacity and address the structural causes of poverty, vulnerability, and exposure. In small island states, this integration is being enabled through focused institutional coordination, greater stakeholder engagement, and promotion of community-based adaptation and resilience-building projects (UNISDR and UNDP, 2012). Similar initiatives are underway in urban areas (UNISDR, 2012; see also Sections 15.3.2, 15.3.3, 15.5; Chapter 24; Box CC-TC).

Resilience is also being explored as an outcome of social contracts that underpin governance. O’Brien et al. (2009) use examples from Norway, New Zealand, and Canada to illustrate how resilience thinking on climate does not easily fit into existing social contracts, and that new types of arrangements may better serve the goals of resilience and sustainable development within the context of climate change. Chapter 20 describes climate-resilient development pathways as being an explicit objective of long-term planning and decision making and considers the need for transformational adaptation aiming to achieve sustainable development (Sections 20.5).

2.5.3. Transformation: How Do We Make Decisions Involving Transformation?

Much of the existing adaptation literature examines gradual adjustment or accommodation to change. But a growing literature highlights the importance of transformative adaptation (Sections 14.3.5, 16.4.2), both in the context of a world where global temperature raise above 2°C (Kates et al., 2012; PIK, 2012) and in the context of climate-resilient

pathways that manage risk through combinations of adaptation and mitigation (Section 20.5).

In concluding this chapter, we therefore reflect on some emerging, though still sparse, literature that examines such transformational adaptation, how it differs from incremental adaptation (O'Brien, 2012; Park et al., 2012), and how it might occur in specific sectors and systems (Rickards and Howden, 2012). This early literature suggests that many themes raised in this chapter may prove important to transformational adaptation, including iterative risk management with a broad view of risk, adaptive management, robustness and resilience, and deliberation (McGray et al., 2007; Leary et al., 2008; Hallegatte, 2009; Tschakert and Dietrich, 2010; Hallegatte et al., 2011; Stafford Smith et al., 2011). For instance, Irvin and Stansbury (2004) identify situations where participatory processes may be most effective for bringing about positive social and environmental change. Recently, Park et al. (2012) have proposed the Adaptation Action Cycles concept as a means to delineate incremental and transformative adaptation and the role of learning in the decision-making process. Similar to the learning process called "triple-loop"—which considers a situation, its drivers, plus the underlying frames and values that provide the situation context (Argyris and Schön, 1978; Peschl, 2007; Hargrove, 2008)—transformational adaptation may involve decision makers questioning deep underlying principles (Flood and Romm, 1996; Pelling et al., 2008) and seeking changes in institutions, such as legal and regulatory structures underlying environmental and natural resource management (Craig, 2010; Ruhl, 2010a), as well as in cultural values (O'Brien, 2012; O'Brien et al., 2013).

References

- Abel, N., R. Gorddard, B. Harman, A. Leitch, J. Langridge, A. Ryan, and S. Heyenga, 2011: Sea level rise, coastal development and planned retreat: analytical framework, governance principles and an Australian case study. *Environmental Science & Policy*, **14**, 279-288.
- Adger, W.N., 2003: Social capital, collective action, and adaptation to climate change. *Economic Geography*, **79**, 387-404.
- Adger, W.N., 2006: Vulnerability. *Global Environmental Change*, **16**, 268-281.
- Adger, W.N. and J. Barnett, 2009: Four reasons for concern about adaptation to climate change. *Environment and Planning A*, **41**, 2800-2805.
- Adger, W.N., S. Agrawala, M. Mirza, C. Conde, K. O'Brien, J. Pulhin, R. Pulwarty, B. Smit, and K. Takahashi, 2007: Assessment of adaptation practices, options, constraints and capacity. In: *Climate Change 2007: Impacts, Adaptation and Vulnerability. Contribution of Working Group II to the Fourth Assessment Report of the Intergovernmental Panel on Climate Change* [Parry, M.L., O.F. Canziani, J.P. Palutikof, P.J. van der Linden, and C.E. Hanson (eds.)]. Cambridge University Press, Cambridge, UK and New York, NY, USA, pp. 717-743.
- Adger, W.N., S. Dessai, M. Goulden, M. Hulme, I. Lorenzoni, D. Nelson, L. Naess, J. Wolf, and A. Wreford, 2009: Are there social limits to adaptation to climate change? *Climatic Change*, **93**, 335-354.
- Adger, W.N., J. Barnett, K. Brown, N. Marshall, and K. O'Brien, 2013: Cultural dimensions of climate change impacts and adaptation. *Nature Climate Change*, **3**, 112-117.
- Agarwal, A., 2010: Local institutions in adaptation to climate change. In: *Social Dimensions of Climate Change: Equity and Vulnerability in a Warming World* [Mearns, R. and A. Norton (eds.)]. The International Bank for Reconstruction and Development / The World Bank, Washington DC, USA, pp. 173-197.
- Agrawala, S. and S. Fankhauser (eds.), 2008: *Economic Aspects of Adaptation to Climate Change: Costs, Benefits and Policy Instruments*. The Organisation for Economic Co-operation and Development (OECD) Publishing, Paris, France, 133 pp.
- Alcamo, J., J.M. Moreno, B. Nováky, M. Bindi, R. Corobov, R.J.N. Devoy, C. Giannakopoulos, E. Martin, J.E. Olesen, and A. Shvidenko, 2007: Europe. In: *Climate Change 2007: Impacts, Adaptation and Vulnerability. Contribution of Working Group II to the Fourth Assessment Report of the Intergovernmental Panel on Climate Change* [Parry, M.L., O.F. Canziani, J.P. Palutikof, P.J. van der Linden, and C.E. Hanson (eds.)]. Cambridge University Press, Cambridge, UK and New York, NY, USA, pp. 541-580.
- Althaus, C.E., 2005: A disciplinary perspective on the epistemological status of risk. *Risk Analysis*, **25**, 567-588.
- Anderson, N.B., 2011: Special issue: psychology and global climate change. *American Psychologist*, **66**(4), 241-328.
- Andersson, B. and A. Wallin, 2000: Students' understanding of the greenhouse effect, the societal consequences of reducing CO₂ emissions and the problem of ozone layer depletion. *Journal of Research in Science Teaching*, **37**, 1096-1111.
- André, K., L. Simonsson, Å.G. Swartling, and B.-O. Linnér, 2012: Method development for identifying and analysing stakeholders in climate change adaptation processes. *Journal of Environmental Policy & Planning*, **14**, 243-261.
- Argyris, C. and D.A. Schön, 1978: *Organizational Learning: A Theory of Action Perspective*. Addison-Wesley, Reading, MA, USA, 356 pp.
- Arnell, N.W., M.J.L. Livermore, S. Kovats, P.E. Levy, R. Nicholls, M.L. Parry, and S.R. Gaffin, 2004: Climate and socio-economic scenarios for global-scale climate change impacts assessments: characterising the SRES storylines. *Global Environmental Change: Human and Policy Dimensions*, **14**, 3-20.
- Arnold, D.G. (ed.), 2011: *The Ethics of Global Climate Change*. Cambridge University Press, New York, NY, USA, 340 pp.
- Asseng, S., F. Ewert, C. Rosenzweig, J. Jones, J. Hatfield, A. Ruane, K. Boote, P. Thorburn, R. Rötter, and D. Cammarano, 2013: Uncertainty in simulating wheat yields under climate change. *Nature Climate Change*, **3**, 827-832.
- Atran, S., D.L. Medin, and N.O. Ross, 2005: The cultural mind: environmental decision making and cultural modeling within and across populations. *Psychological Review*, **112**(4), 744-776.
- Australian Public Service Commission, 2007: *Tackling Wicked Problems: A Public Policy Perspective*. Australian Public Service Commission, Canberra, ACT, Australia, 38 pp.
- Ayers, J., S. Anderson, S. Pradhan, and T. Rossing, 2012: *Participatory Monitoring, Evaluation, Reflection and Learning for Community-based Adaptation: A Manual for Local Practitioners*. PMERL Manual, CARE International, London, UK, 87 pp.
- Backus, G.A., T.S. Lowry, and D.E. Warren, 2013: The near-term risk of climate uncertainty among the U.S. states. *Climatic Change*, **116**, 495-522.
- Badke-Schaub, P. and S. Strohschneider, 1998: Complex problem solving in the cultural context. *Le Travail Humain*, **61**, 1-28.
- Baer, P. and J.S. Risbey, 2009: Uncertainty and assessment of the issues posed by urgent climate change. An editorial comment. *Climatic Change*, **92**, 31-36.
- Barnett, J. and W. Adger, 2003: Climate dangers and atoll countries. *Climatic Change*, **61**, 321-337.
- Barnett, J. and S. O'Neill, 2010: Maladaptation. *Global Environmental Change*, **20**, 211-213.
- Baron, J. and M. Spranca, 1997: Protected values. *Organizational Behavior and Human Decision Processes*, **70**, 1-16.
- Baron, J.S., L. Gunderson, C.D. Allen, E. Fleishman, D. McKenzie, L.A. Meyerson, J. Oropeza, and N. Stephenson, 2009: Options for national parks and reserves for adapting to climate change. *Environmental Management*, **44**, 1033-1042.
- Bartley, T., 2007: How foundations shape social movements: the construction of an organizational field and the rise of forest certification. *Social Problems*, **54**, 229-255.
- Bateman, B. and R. Rancier (eds.), 2012: *Case Studies in Integrated Water Resources Management: From Local Stewardship to National Vision*. American Water Resources Association, Middleburg, VA, USA, 60 pp.
- Batie, S.S., 2008: Wicked problems and applied economics. *American Journal of Agricultural Economics*, **90**, 1176-1191.
- Beck, U., 1992: *Risk Society: Towards a New Modernity*. Sage Publications, London, UK, 260 pp.
- Beck, U., 2000: Risk society revisited: theory, politics and research programmes. In: *The Risk Society and Beyond: Critical Issues for Social Theory* [Adam, B., U. Beck, and J. van Loon (eds.)]. Sage Publications, London, UK, pp. 211-229.
- Beck, U., 2010: Climate for change, or how to create a green modernity? *Theory, Culture & Society*, **27**, 254-266.
- Bedsworth, L. and E. Hanak, 2012: Preparing California for a changing climate. *Climatic Change*, **111**, 1-4.
- Bell, R.L. and N.G. Lederman, 2003: Understandings of the nature of science and decision making on science and technology based issues. *Science Education*, **87**, 352-377.

- Berkhout, F., B. van den Hurk, J. Bessembinder, J. de Boer, B. Bregman, and M. van Drunen, 2013:** Framing climate uncertainty: socio-economic and climate scenarios in vulnerability and adaptation assessments. *Regional Environmental Change*, 15 pp. (in press), link.springer.com/article/10.1007/s10113-013-0519-2.
- Berman, R., C. Quinn, and J. Paavola, 2012:** The role of institutions in the transformation of coping capacity to sustainable adaptive capacity. *Environmental Development*, 2, 86-100.
- Berrang-Ford, L., J.D. Ford, and J. Paterson, 2011:** Are we adapting to climate change? *Global Environmental Change*, 21, 25-33.
- Bierbaum, R., J.B. Smith, A. Lee, M. Blair, L. Carter, F.S. Chapin III, P. Fleming, S. Ruffo, M. Stults, and S. McNeeley, 2013:** A comprehensive review of climate adaptation in the United States: more than before, but less than needed. *Mitigation and Adaptation Strategies for Global Change*, 18, 361-406.
- Biesbroek, G.R., R.J. Swart, T.R. Carter, C. Cowan, T. Henrichs, H. Mela, M.D. Morecroft, and D. Rey, 2010:** Europe adapts to climate change: comparing national adaptation strategies. *Global Environmental Change*, 20, 440-450.
- Biesbroek, G.R., J.E. Klostermann, C.J. Termeer, and P. Kabat, 2013:** On the nature of barriers to climate change adaptation. *Regional Environmental Change*, 13, 1119-1129.
- Bizikova, L., T. Neale, and I. Burton, 2008:** *Canadian Communities' Guidebook for Adaptation to Climate Change: Including an Approach to Generate Mitigation Co-Benefits in the Context of Sustainable Development*. 1st edn., Adaptation and Impacts Research Division, Environment Canada, and University of British Columbia, Vancouver, Canada, 97 pp.
- Bizikova, L., S. Burch, S. Cohen, and J. Robinson, 2010:** Linking sustainable development with climate change adaptation and mitigation. In: *Climate Change, Ethics and Human Security* [O'Brien, K., A.L.S. Clair, and B. Kristoffersen (eds.)]. Cambridge University Press, Cambridge, UK, pp. 157-179.
- Black, C., J. Brislawn, G. Deheza, T. Finessey, and C. McNutt, 2012:** *Summary Report: Colorado Drought Tournament*. Report from September 2012 Drought Tournament, National Oceanic and Atmospheric Administration (NOAA), Boulder, CO, USA, 15 pp.
- Böhm, G. and H.-R. Pfister, 2000:** Action tendencies and characteristics of environmental risks. *Acta Psychologica*, 104, 317-337.
- Boyd, E., H. Osbahr, P.J. Ericksen, E.L. Tompkins, M.C. Lemos, and F. Miller, 2008:** Resilience and 'climatizing' development: examples and policy implications. *Development*, 51, 390-396.
- Boyes, E., M. Stanisstreet, and V.S. Papantoniou, 1999:** The ideas of Greek high school students about the "ozone layer". *Science Education*, 83, 724-737.
- Boykoff, M.T. and J.M. Boykoff, 2007:** Climate change and journalistic norms: a case-study of US mass-media coverage. *Geoforum*, 38, 1190-1204.
- Bradbury, J.A., 2006:** Risk communication in environmental restoration programs. *Risk Analysis*, 14, 357-363.
- Brander, K., 2010:** Impacts of climate change on fisheries. *Journal of Marine Systems*, 79, 389-402.
- Bravo, M.T., 2009:** Voices from the sea ice: the reception of climate impact narratives. *Journal of Historical Geography*, 35, 256-278.
- Brewer, P.R. and A. Pease, 2008:** Federal climate politics in the United States: polarization and paralysis. In: *Turning Down the Heat: The Politics of Climate Policy in Affluent Democracies* [Compston, H. and I. Bailey (eds.)]. Palgrave Macmillan, New York, NY, USA, pp. 85-103.
- Britton, N.R., 1986:** Developing an understanding of disaster. *Journal of Sociology*, 22, 254-271.
- Broome, J., 2008:** The ethics of climate change: pay now or pay more later? *Scientific American*, 298, 96-102.
- Brown, C., W. Werick, W. Leger, and D. Fay, 2011:** A decision analytic approach to managing climate risks – application to the upper Great Lakes. *Journal of the American Water Resources Association*, 47, 524-534.
- Brown, D.A., 2012:** *Climate Change Ethics: Navigating the Perfect Moral Storm*. Taylor and Francis, London, UK, 288 pp.
- Brugnach, M., A. Dewulf, C. Pahl-Wostl, and T. Taillieu, 2008:** Toward a relational concept of uncertainty: about knowing too little, knowing too differently, and accepting not to know. *Ecology and Society*, 13(2), 30, www.ecologyand society.org/vol13/iss2/art30/.
- Budescu, D.V., H.-H. Por, and S.B. Broomell, 2012:** Effective communication of uncertainty in the IPCC reports. *Climatic Change*, 113, 181-200.
- Burch, S. and J. Robinson, 2007:** A framework for explaining the links between capacity and action in response to global climate change. *Climate Policy*, 7, 304-316.
- Burch, S., S.R.J. Sheppard, A. Shaw, and D. Flanders, 2010:** Planning for climate change in a flood-prone community: municipal barriers to policy action and the use of visualizations as decision-support tools. *Journal of Flood Risk Management*, 3, 126-139.
- Burley, J., R.J. McAllister, K. Collins, and C. Lovelock, 2012:** Integration, synthesis and climate change adaptation: a narrative based on coastal wetlands at the regional scale. *Regional Environmental Change*, 12, 581-593.
- Burton, I. and E. May, 2004:** The adaptation deficit in water resources management. *IDS Bulletin*, 35, 31-37.
- Caney, S., 2006:** Cosmopolitan justice, rights and global climate change. *Canadian Journal of Law and Jurisprudence*, 19, 255-278.
- Caney, S., 2009:** Climate change and the future: discounting for time, wealth, and risk. *Journal of Social Philosophy*, 40, 163-186.
- Cardona, O.D., M.K. van Aalst, J. Birkmann, M. Fordham, G. McGregor, R. Perez, R.S. Pulwarty, E.L.F. Schipper, and B.T. Sinh, 2012:** Determinants of risk: exposure and vulnerability. In: *Managing the Risks of Extreme Events and Disasters to Advance Climate Change Adaptation. A Special Report of Working Groups I and II of the Intergovernmental Panel on Climate Change* [Field, C.B., V. Barros, T.F. Stocker, D. Qin, D.J. Dokken, K.L. Ebi, M.D. Mastrandrea, K.J. Mach, G.-K. Plattner, S.K. Allen, M. Tignor, and P.M. Midgley (eds.)]. Cambridge University Press, Cambridge, UK and New York, NY, USA, pp. 65-108.
- CARE International in Vietnam, 2009:** *Mainstreaming Climate Change Adaptation: A Practitioner's Handbook*. CARE International in Vietnam, Ha Noi, Vietnam, 59 pp.
- Carpenter, S.R., P.L. Pingali, E.M. Bennet, and M.B. Zurek (eds.), 2005:** *Ecosystems and Human Well-being: Scenarios*. Vol. 2, Island Press, Washington, DC, USA, 596 pp.
- Carter, T.R., M.L. Parry, H. Harasawa, and S. Nishioka, 1994:** *IPCC Technical Guidelines for Assessing Climate Change Impacts and Adaptations*. Department of Geography, University College, London, UK and Center for Global Environmental Research, National Institute for Environmental Studies, Tsukuba, Japan, 59 pp.
- Carter, T.R., R.N. Jones, X. Lu, S. Bhadwal, C. Conde, L.O. Mearns, B.C. O'Neill, M.D.A. Rounsevell and M.B. Zurek, 2007:** New Assessment Methods and the Characterisation of Future Conditions. In: *Climate Change 2007: Impacts, Adaptation and Vulnerability. Contribution of Working Group II to the Fourth Assessment Report of the Intergovernmental Panel on Climate Change* [Parry, M.L., O.F. Canziani, J.P. Palutikof, P.J. van der Linden and C.E. Hanson (eds.)]. Cambridge University Press, Cambridge, UK, 133-171.
- Carvalho, A. and J. Burgess, 2005:** Cultural circuits of climate change in U.K. Broadsheet Newspapers, 1985–2003. *Risk Analysis*, 25(6), 1457-1469.
- Cash, D.W., W.C. Clark, F. Alcock, N.M. Dickson, N. Eckley, D.H. Guston, J. Jaeger, and R.B. Mitchell, 2003:** Knowledge systems for sustainable development. *Proceedings of the National Academy of Sciences of the United States of America*, 100, 8086-8091.
- Changnon, S.A., P.J. Lamb, and K.G. Hubbard, 1990:** Regional climate centers: new institutions for climate services and climate-impact research. *Bulletin of the American Meteorological Society*, 71, 527-537.
- Christie, P. and M. Sommerkorn, 2012:** *RACER: Rapid Assessment of Circum-Arctic Ecosystem Resilience*, 2nd edn., WWF Global Arctic Programme, Ottawa, Canada, 72 pp.
- Christoplos, I., J. Mitchell, and A. Liljelund, 2001:** Re-framing risk: the changing context of disaster mitigation and preparedness. *Disasters*, 25, 185-198.
- Ciscar, J.-C., A. Iglesias, L. Feyen, L. Szabó, D. Van Regemorter, B. Amelung, R. Nicholls, P. Watkiss, O.B. Christensen, and R. Dankers, 2011:** Physical and economic consequences of climate change in Europe. *Proceedings of the National Academy of Sciences of the United States of America*, 108, 2678-2683.
- Cismaru, M., R. Cismaru, T. Ono, and K. Nelson, 2011:** "Act on climate change": an application of protection motivation theory. *Social Marketing Quarterly*, 17, 62-84.
- Climate Change Science Program, 2009:** *Best Practice Approaches for Characterizing, Communicating and Incorporating Scientific Uncertainty in Climate Decision Making* [Morgan, M. (Lead Author), H. Dowlatabadi, M. Henrion, D. Keith, R. Lempert, S. McBride, M. Small, and T. Wilbanks (Contributing Authors)]. Synthesis and Assessment Product 5.2, Report by the Climate Change Science Program (CCSP) and the Subcommittee on Global Change Research, National Oceanic and Atmospheric Administration, Washington, DC, USA, 96 pp.
- Coastal Protection and Restoration Authority, 2007:** *Louisiana's Comprehensive Master Plan for a Sustainable Coast*. Coastal Protection and Restoration Authority of Louisiana, Baton Rouge, LA, USA, 113 pp.

- Cohen, S.J.**, 2010: From observer to extension agent – using research experiences to enable proactive response to climate change. *Climatic Change*, **100**, 131-136.
- Cohen, S.J.**, 2011: Overview: climate change adaptation in rural and resource-dependent communities. In: *Climate Change Adaptation in Developed Nations* [Ford, J.D. and L. Berrang-Ford (eds.)]. Vol. 42, Springer, Dordrecht, Netherlands and New York, NY, USA, pp. 401-412.
- Committee on New Orleans Regional Hurricane Protection Projects**, 2009: *The New Orleans Hurricane Protection System*. The National Academies Press, Washington, DC, USA, 46 pp.
- Cork, S., R.N. Jones, C. Butler, D. Cocks, I. Dunlop, and P. Howe**, 2012: Towards scenarios for a sustainable and equitable future Australia. In: *Negotiating our Future: Living Scenarios for Australia to 2050* [Raupach, M.R., A.J. McMichael, J.J. Finnigan, L. Manderson, and B.H. Walker (eds.)]. Vol. 1, Australian Academy of Science, Canberra, ACT, Australia, pp. 115-151.
- Corraliza, J.A. and J. Berenguer**, 2000: Environmental values, beliefs, and actions: a situational approach. *Environment and Behavior*, **32**, 832-848.
- Craig, R.**, 2010: 'Stationarity is dead' – long live transformation: five principles for climate change adaptation law. *Harvard Environmental Law Review*, **34**, 9-75.
- Crate, S.A.**, 2011: Climate and culture: anthropology in the era of contemporary climate change. *Annual Review of Anthropology*, **40**, 175-194.
- Crate, S.A. and M. Nuttal**, 2009: *Anthropology and Climate Change: From Encounters to Actions*. Left Coast Press, Walnut Creek, CA, USA, 416 pp.
- Daniell, K., I. White, and D. Rollin**, 2009: Ethics and participatory water planning. In: *Proceedings of H2009: 32nd Hydrology and Water Resources Symposium, 30 November-3 December 2009, Newcastle, Australia*. Engineers Australia, Barton, ACT, Australia, pp. 1476-1487.
- Davidson, D.J. and M. Haan**, 2011: Gender, political ideology, and climate change beliefs in an extractive industry community. *Population & Environment*, **34**, 217-234.
- De Groot, J.I. and L. Steg**, 2007: Value orientations and environmental beliefs in five countries: validity of an instrument to measure egoistic, altruistic and biospheric value orientations. *Journal of Cross-Cultural Psychology*, **38**, 318-332.
- De Groot, J.I. and L. Steg**, 2008: Value orientations to explain beliefs related to environmental significant behavior: how to measure egoistic, altruistic, and biospheric value orientations. *Environment and Behavior*, **40**, 330-354.
- de la Vega-Leinert, A.C., D. Schröter, R. Leemans, U. Fritsch, and J. Plumiers**, 2008: A stakeholder dialogue on European vulnerability. *Regional Environmental Change*, **8**, 109-124.
- Debels, P., C. Szlafsztajn, P. Aldunce, C. Neri, Y. Carvajal, M. Quintero-Angel, A. Celis, A. Bezanilla, and D. Martínez**, 2009: IUPA: a tool for the evaluation of the general usefulness of practices for adaptation to climate change and variability. *Natural Hazards*, **50**, 211-233.
- DeGaetano, A.T., T.J. Brown, S.D. Hilberg, K. Redmond, K. Robbins, P. Robinson, M. Shulski, and M. McGuirk**, 2010: Toward regional climate services: the role of NOAA's regional climate centers. *Bulletin of the American Meteorological Society*, **91**, 1633-1644.
- Demeritt, D.**, 2001: The construction of global warming and the politics of science. *Annals of the Association of American Geographers*, **91**, 307-337.
- Demeritt, D.**, 2006: Science studies, climate change and the prospects for constructivist critique. *Economy and Society*, **35**, 453-479.
- Descola, P.**, 2010: *Diversité des Natures, Diversité des Cultures*. Bayard, Paris, France, 88 pp.
- DesJardins, J.R.**, 2013: *Environmental Ethics: An Introduction to Environmental Philosophy*. 5th edn., Wadsworth, Boston, MA, USA, 304 pp.
- Dessai, S. and M. Hulme**, 2007: Assessing the robustness of adaptation decisions to climate change uncertainties: a case study on water resources management in the East of England. *Global Environmental Change*, **17**, 59-72.
- Dessai, S., M. Hulme, R.J. Lempert, and R. Pielke Jr**, 2009: Climate prediction: a limit to adaptation? In: *Adapting to Climate Change: Thresholds, Values, Governance* [Adger, W.N., I. Lorenzoni and K.L. O'Brien (eds.)]. Cambridge University Press, Cambridge, UK, pp. 49-57.
- Dewulf, A., M. Craps, R. Bouwen, T. Taillieu, and C. Pahl-Wostl**, 2005: Integrated management of natural resources: dealing with ambiguous issues, multiple actors and diverging frames. *Water Science and Technology*, **52**, 115-124.
- Dietz, T. and P.C. Stern (eds.)**, 2008: *Public Participation in Environmental Assessment and Decision Making*. National Academies Press, Washington, DC, USA, 307 pp.
- Dovers, S.**, 2009: Normalizing adaptation. *Global Environmental Change*, **19**, 4-6.
- Dube, O.P. and B.M. Sekhwela**, 2008: Indigenous knowledge, institutions and practices for coping with variable climate in the Limpopo basin of Botswana. In: *Climate Change and Adaptation* [Leary, N., J. Adejuwon, V. Barros, I. Burton, J. Kulkarni, and R. Lasco (eds.)]. Earthscan, London, UK, pp. 71-99.
- Duffy, S. and M. Verges**, 2010: Forces of nature affect implicit connections with nature. *Environment and Behavior*, **42**, 723-739.
- Dupuy, J.-P. and A. Grinbaum**, 2005: Living with uncertainty: from the precautionary principle to the methodology of ongoing normative assessment. *Comptes Rendus Geosciences*, **337**, 457-474.
- Duval, T.S. and J.P. Mulilis**, 1999: A person-relative-to-event (PrE) approach to negative threat appeals and earthquake preparedness: a field study. *Journal of Applied Social Psychology*, **29**, 495-516.
- Ebi, K.L. and J.C. Semenza**, 2008: Community-based adaptation to the health impacts of climate change. *American Journal of Preventive Medicine*, **35**, 501-507.
- Ebi, K.L., S. Hallegatte, T. Kram, N.W. Arnell, T.R. Carter, J. Edmonds, E. Kriegler, R. Mathur, B.C. O'Neill, K. Riahi, H. Winkler, D. Vuuren, and T. Zwicke**, 2014: A new scenario framework for climate change research: background, process, and future directions. *Climatic Change*, **122**, 363-372, 10 pp., doi:10.1007/s10584-013-0912-3.
- Edwards, P.N.**, 2010: *A Vast Machine: Computer Models, Climate Data, and the Politics of Global Warming*. MIT Press, Cambridge, MA, USA, 518 pp.
- Eiser, J.R., A. Bostrom, I. Burton, D.M. Johnston, J. McClure, D. Paton, J. van der Pligt, and M.P. White**, 2012: Risk interpretation and action: a conceptual framework for responses to natural hazards. *International Journal of Disaster Risk Reduction*, **1**, 5-16.
- Endfield, G.**, 2011: Reculturing and particularizing climate discourses: weather, identity, and the work of George Manley. *Osiris*, **26**, 142-162.
- English, P.B., A.H. Sinclair, Z. Ross, H. Anderson, V. Boothe, C. Davis, K. Ebi, B. Kagey, K. Malecki, and R. Shultz**, 2009: Environmental health indicators of climate change for the United States: findings from the State Environmental Health Indicator Collaborative. *Environmental Health Perspectives*, **117**, 1673-1681.
- Eriksen, S., P. Aldunce, C.S. Bahinipati, R.D.A. Martins, J.I. Molefe, C. Nhemachena, K. O'Brien, F. Olorunfemi, J. Park, and L. Sygna**, 2011: When not every response to climate change is a good one: identifying principles for sustainable adaptation. *Climate and Development*, **3**, 7-20.
- European Environmental Agency**, 2013: *Late Lessons from Early Warnings: Science, Precaution, Innovation*. EEA Report, No.1/2013, European Environmental Agency, Copenhagen, Denmark, 760 pp.
- FAO**, 2013: *Fisheries Glossary*. Food and Agriculture Organization of the United Nations (FAO), Rome, Italy, www.fao.org/fi/glossary/ (accessed 28 Feb. 2013).
- Farbotko, C. and H. Lazrus**, 2012: The first climate refugees? Contesting global narratives of climate change in Tuvalu. *Global Environmental Change*, **22**, 382-390.
- Feenstra, J.F., I. Burton, J.B. Smith, and R.S.J. Tol (eds.)**, 1998: *Handbook on Methods for Climate Change Impact Assessment and Adaptation Strategies*. Version 2.0, United Nations Environment Programme (UNEP), Nairobi, Kenya and Institute for Environmental Studies, Vrije Universiteit, Amsterdam, Netherlands, 464 pp.
- Fillmore, C.J. and B.T. Atkins**, 1992: Towards a frame-based organization of the lexicon: the semantics of RISK and its neighbors. In: *Frames, Fields, and Contrasts: New Essays in Semantics and Lexical Organization* [Lehrer, A. and E. Kittay (eds.)]. Lawrence Erlbaum, Mahwah, NJ, USA, pp. 75-102.
- Fiorino, D.J.**, 1990: Citizen participation and environmental risk: a survey of institutional mechanisms. *Science, Technology & Human Values*, **15**, 226-243.
- Fischbach, J.R., D.R. Johnson, D.S. Ortiz, B.P. Bryant, M. Hoover, and J. Ostwald**, 2012: *Coastal Louisiana Risk Assessment Model*. RAND Gulf States Policy Institute, Santa Monica, CA, USA 118 pp.
- Fischer, A. and K. Glenk** 2011: One model fits all? – On the moderating role of emotional engagement and confusion in the elicitation of preferences for climate change adaptation policies. *Ecological Economics*, **70**, 1178-1188.
- Fisher, B.S., N. Nakicenovic, K. Alfsen, J.C. Morlot, F. de la Chesnaye, J.-C. Hourcade, K. Jiang, M. Kainuma, E. La Rovere, A. Matysek, A. Rana, K. Riahi, R. Richels, S. Rose, D. van Vuuren, and R. Warren**, 2007: Issues related to mitigation in the long term context. In: *Mitigation of Climate Change. Contribution of Working Group III to the Fourth Assessment Report of the Intergovernmental Panel on Climate Change* [Metz, B., O.R. Davidson, P.R. Bosch, R. Dave, and L.A. Meyer (eds.)]. Cambridge University Press, Cambridge, UK and New York, NY, USA, pp. 169-250.
- Flood, R.L. and N.R.A. Romm**, 1996: *Diversity Management: Triple Loop Learning*. John Wiley and Sons, Chichester, UK, 253 pp.

- Folke, C., 2006: Resilience: The emergence of a perspective for social-ecological systems analyses. *Global Environmental Change*, **16**, 253-267.
- Ford, J.D. and L. Berrang-Ford (eds.), 2011: *Climate Change Adaptation in Developed Nations: From Theory to Practice*. Springer, Dordrecht, Netherlands, 490 pp.
- Freudenberg, W.R., R.B. Gramling, S.B. Laska, and K.T. Erikson, 2009: *Catastrophe in the Making: The Engineering of Katrina and the Disasters of Tomorrow*. Island Press/Shearwater Books, Washington, DC, USA, 209 pp.
- Gagnon Thompson, S.C. and M.A. Barton, 1994: Ecocentric and anthropocentric attitudes toward the environment. *Journal of Environmental Psychology*, **14**, 149-157.
- Gallopin, G.C., 2006: Linkages between vulnerability, resilience, and adaptive capacity. *Global Environmental Change*, **16**, 293-303.
- Gardiner, S.M., 2004: Ethics and global climate change. *Ethics*, **114**, 555-600.
- Gardiner, S.M., 2011: *A Perfect Moral Storm: The Ethical Tragedy of Climate Change*. Oxford University Press, Oxford, UK and New York, NY, USA, 512 pp.
- Gardiner, S.M., S. Caney, D. Jamieson, and H. Shue (eds.), 2010: *Climate Ethics: Essential Readings*. Oxford University Press, Oxford, UK and New York, NY, USA, 368 pp.
- Gardner, J., A.-M. Dowd, C. Mason, and P. Ashworth, 2009: *A Framework for Stakeholder Engagement on Climate Adaptation*. CSIRO Climate Adaptation Flagship Working Paper No. 3, Commonwealth Scientific and Industrial Organisation (CSIRO), Canberra, ACT, Australia, 32 pp.
- Garvey, J., 2008: *The EPZ Ethics of Climate Change: Right and Wrong in a Warming World*. Bloomsbury Academic, London, UK, 186 pp.
- Garvin, T., 2001: Analytical paradigms: the epistemological distances between scientists, policy makers, and the public. *Risk Analysis*, **21**, 443-456.
- Giddens, A., 2000: *Runaway World: How Globalization is Reshaping our Lives*. Routledge, New York, NY, USA, 124 pp.
- Giddens, A., 2009: *The Politics of Climate Change*. Polity Press, Cambridge, UK and Malden, MA, USA, 264 pp.
- Gifford, R., 2008: Psychology's essential role in alleviating the impacts of climate change. *Canadian Psychology*, **49**, 273.
- Gigerenzer, G. and D.G. Goldstein, 1996: Reasoning the fast and frugal way: models of bounded rationality. *Psychological Review*, **103**, 650-669.
- Glantz, M.H. (ed.), 1988: *Societal Responses to Regional Climate Change. Forecasting by Analogy*. Westview Press, Boulder, CO, USA, 428 pp.
- Goloubinoff, M., E. Katz, and A. Lammel (eds.), 1997: *Antropología del Clima en el Mundo Hispanoamericano*, Vols. I & II, Vols. 49 and 50 Colección Biblioteca Abya-Yala, Ediciones Abya-Yala, Quito, Ecuador, 602 pp.
- Green, D. and G. Raygorodetsky, 2010: Indigenous knowledge of a changing climate. *Climatic Change*, **100**, 239-242.
- Green, D. and K.R. Smith, 2002: The implications of graduation: why developing nations will never produce more greenhouse gases than developed countries. *Journal of Energy and Development*, **28**, 15-40.
- Grothmann, T. and A. Patt, 2005: Adaptive capacity and human cognition: the process of individual adaptation to climate change. *Global Environmental Change: Human and Policy Dimensions*, **15**, 199-213.
- Grothmann, T. and F. Reusswig, 2006: People at risk of flooding: why some residents take precautionary action while others do not. *Natural Hazards*, **38**, 101-120.
- Grothmann, T., K. Grecksch, M. Wings and B. Siebenhüner, 2013: Assessing institutional capacities to adapt to climate change—integrating psychological dimensions in the Adaptive Capacity Wheel. *Natural Hazards and Earth System Sciences Discussions*, **1**, 793-828.
- Groves, D.G., M. Davis, R. Wilkinson, and R. Lempert, 2008: Planning for climate change in the inland empire: Southern California. *Water Resources IMPACT*, **10**, 14-17.
- Groves, D.G., C. Sharon, and D. Knopman, 2012: *Planning Tool to Support Louisiana's Decisionmaking on Coastal Protection and Restoration*. RAND Gulf States Policy Institute, Santa Monica, CA, USA 82 pp.
- Grundmann, R. and N. Stehr, 2010: Climate change: what role for sociology? A response to Constance Lever-Tracy. *Current Sociology*, **58**, 897-910.
- Gupta, J., K. Termeer, J. Klostermann, S. Meijerink, M. van den Brink, P. Jong, and S. Nooteboom, 2008: *Institutions for Climate Change: A Method to Assess the Inherent Characteristics of Institutions to Enable the Adaptive Capacity of Society*. Institute for Environmental Studies, Vrije Universiteit, Amsterdam, Netherlands, 19 pp.
- Gupta, J., C. Termeer, J. Klostermann, S. Meijerink, M. van den Brink, P. Jong, S. Nooteboom, and E. Bergsma, 2010: The adaptive capacity wheel: a method to assess the inherent characteristics of institutions to enable the adaptive capacity of society. *Environmental Science & Policy*, **13**, 459-471.
- Güss, C.D., M.T. Tuason, and C. Gerhard, 2010: Cross-national comparisons of complex problem-solving strategies in two microworlds. *Cognitive Science*, **34**, 489-520.
- Guston, D.H., 2001: Boundary organizations in environmental policy and science: an introduction. *Science, Technology & Human Values*, **26**, 399-408.
- Hagerman, S., H. Dowlatabadi, K. Chan, and T. Satterfield, 2010: Integrative propositions for adapting conservation policy to the impacts of climate change. *Global Environmental Change*, **20**, 351-362.
- Haines, A., R.S. Kovats, D. Campbell-Lendrum, and C. Carvalan, 2006: Climate change and human health: impacts, vulnerability, and mitigation. *The Lancet*, **367**, 2101-2109.
- Hallegatte, S., 2009: Strategies to adapt to an uncertain climate change. *Global Environmental Change*, **19(2)**, 240-247.
- Hallegatte, S., F. Lecocq, and C. de Perthuis, 2011: *Designing Climate Change Adaptation Policies: An Economic Framework*. Policy Research Working Paper 5568, The World Bank, Washington, DC, USA, 39 pp.
- Hamblyn, R., 2009: The whistleblower and the canary: rhetorical constructions of climate change. *Journal of Historical Geography*, **35**, 223-236.
- Hamilton, C., S. Adolphs, and B. Nerlich, 2007: The meanings of 'risk': a view from corpus linguistics. *Discourse Society*, **18**, 163-181.
- Hansson, S.O., 2004: Philosophical perspectives on risk. *Techné*, **8**, 10-35.
- Hansson, S.O., 2010: Risk: objective or subjective, facts or values. *Journal of Risk Research*, **13**, 231-238.
- Hardee, K. and C. Mutunga, 2010: Strengthening the link between climate change adaptation and national development plans: lessons from the case of population in National Adaptation Programmes of Action (NAPAs). *Mitigation and Adaptation Strategies for Global Change*, **15**, 113-126.
- Harding, R., 2006: Ecologically sustainable development: origins, implementation and challenges. *Desalination*, **187**, 229-239.
- Hardman, D., 2009: *Judgment and Decision Making: Psychological Perspectives*. John Wiley and Sons, Chichester, UK, 232 pp.
- Hargrove, R., 2008: *Masterful Coaching*. 3rd edn., Wiley, New York, NY, USA, 432 pp.
- Harma, K.J., M.S. Johnson, and S.J. Cohen, 2012: Future water supply and demand in the Okanagan Basin, British Columbia: a scenario-based analysis of multiple, interacting stressors. *Water Resources Management*, **26**, 667-689.
- Harris, P.G., 2010: *World Ethics and Climate Change: From International to Global Justice*. Edinburgh University Press, Edinburgh, UK, 208 pp.
- Harrison, P.A., I.P. Holman, G. Cojocar, K. Kok, A. Kontogianni, M.J. Metzger, and M. Gramberger, 2013: Combining qualitative and quantitative understanding for exploring cross-sectoral climate change impacts, adaptation and vulnerability in Europe. *Regional Environmental Change*, **13**, 761-780.
- Held, D., 2004: Democratic accountability and political effectiveness from a cosmopolitan perspective. *Government and Opposition*, **39**, 364-391.
- Hellmuth, M.E., S. Mason, C. Vaughan, M. van Aalst, and R. Choularton, 2011: *A Better Climate for Disaster Risk Management*. International Research Institute for Climate and Society (IRI), Columbia University, New York, NY, USA, 118 pp.
- Hess, J.J., J.Z. McDowell, and G. Luber, 2012: Integrating climate change adaptation into public health practice: using adaptive management to increase adaptive capacity and build resilience. *Environmental Health Perspectives*, **120**, 171-179.
- Hewitt, C., S. Mason, and D. Walland, 2012: The global framework for climate services. *Nature Climate Change*, **2**, 831-832.
- Hewitt, C., C. Buontempo, and P. Newton, 2013: Using climate predictions to better serve society's needs. *Eos, Transactions, American Geophysical Union*, **94**, 105-107.
- Hinkel, J., 2011: Indicators of vulnerability and adaptive capacity: towards a clarification of the science-policy interface. *Global Environmental Change*, **21**, 198-208.
- Hofstede, G., 1980: *Culture's Consequences: International Differences in Work-related Values*. Sage Publications, Beverly Hills, CA, USA, 327 pp.
- Hofstede, G., 2001: *Culture's Consequences: Comparing Values, Behaviors, Institutions and Organizations Across Nations*. SAGE Publications, Thousand Oaks, CA, USA, 596 pp.
- Hofstede, G., G.J. Hofstede, and M. Minkov, 2010: *Cultures and Organizations: Software of the Mind*. McGraw-Hill, New York, NY, USA, 562 pp.
- Holling, C.S., 1978: *Adaptive Environmental Assessment and Management*. John Wiley and Sons, Chichester, UK, 377 pp.
- Holling, C.S., 1996: Surprise for science, resilience for ecosystems, and incentives for people. *Ecological Applications*, **6**, 733-735.
- Holsten, A. and J.P. Kropp, 2012: An integrated and transferable climate change vulnerability assessment for regional application. *Natural Hazards*, **64**, 1977-1999.

- Huber, T. and P. Pedersen, 1997: Meteorological knowledge and environmental ideas in traditional and modern societies: the case of Tibet. *Journal of the Royal Anthropological Institute*, **3**, 577-597.
- Hulme, M., 2009: *Why We Disagree About Climate Change: Understanding Controversy, Inaction and Opportunity*. Cambridge University Press, Cambridge, UK and New York, NY, USA, 392 pp.
- Hulme, M., 2011: Reducing the future to climate: a story of climate determinism and reductionism. *Osiris*, **26**, 245-266.
- Hulme, M. and M. Mahony, 2010: Climate change: what do we know about the IPCC? *Progress in Physical Geography*, **34**, 705-718.
- Hunt, A., 2008: Informing adaptation to climate change in the UK: some sectoral impact costs. *Integrated Assessment*, **8**, 41-71.
- Huq, S. and H. Reid, 2004: Mainstreaming adaptation in development. *IDS Bulletin*, **35**, 15-21.
- ICLEI Oceania, 2008: *Local Government Climate Change Adaptation Toolkit*. Government of Australia and International Council for Local Environment Initiatives (ICLEI) – Australia/New Zealand Limited, Melbourne, Australia, 61 pp.
- Ignatow, G., 2006: Cultural models of nature and society. *Environment and Behaviour*, **38**, 441-461.
- Ingold, T., 2011: *The Perception of the Environment: Essays in Livelihood, Dwelling and Skill*. Routledge, London, UK and New York, NY, USA, 465 pp.
- IPCC, 2007a: *Climate Change 2007: Impacts, Adaptation and Vulnerability. Contribution of Working Group II to the Fourth Assessment Report of the Intergovernmental Panel on Climate Change* [Parry, M.L., O.F. Canziani, J.P. Palutikof, P.J. van der Linden, and C.E. Hanson (eds.)]. Cambridge University Press, Cambridge, UK and New York, NY, USA, 976 pp.
- IPCC, 2007b: *Climate Change 2007: Synthesis Report* [Core Writing Team, Pachauri, R.K and A. Reisinger (eds.)]. IPCC, Geneva, Switzerland, 104 pp.
- IPCC, 2012: *Managing the Risks of Extreme Events and Disasters to Advance Climate Change Adaptation. A Special Report of Working Groups I and II of the Intergovernmental Panel on Climate Change* [Field, C.B., V. Barros, T.F. Stocker, D. Qin, D.J. Dokken, K.L. Ebi, M.D. Mastrandrea, K.J. Mach, G.-K. Plattner, S.K. Allen, M. Tignor, and P.M. Midgley (eds.)]. Cambridge University Press, Cambridge, UK and New York, NY, USA, 582 pp.
- IRGC, 2010: *The Emergence of Risks: Contributing Factors*. International Risk Governance Council, Geneva, Switzerland, 59 pp.
- Irvin, R.A. and J. Stansbury, 2004: Citizen participation in decision making: is it worth the effort? *Public Administration Review*, **64**, 55-65.
- ISO, 2009: *ISO 31000:2009 Risk Management – Principles and Guidelines*. International Organization for Standardization (ISO), Geneva, Switzerland, 24 pp.
- Ison, R., 2010: *Systems Practice: How to Act in a Climate Change World*. Springer, London, UK, 324 pp.
- Jäger, J., D. Rothman, C. Anastasi, S. Kartha, and P. van Notten, 2008: Training module 6: scenario development and analysis. In: *GEO Resource Book: A Training Manual on Integrated Environmental Assessment and Reporting*. International Institute for Sustainable Development (IISD), Winnipeg, Canada, and United Nations Environment Programme (UNEP), Nairobi, Kenya, 40 pp.
- Jamieson, D., 1992: Ethics, public policy, and global warming. *Science, Technology & Human Values*, **17**, 139-153.
- Jamieson, D., 1996: Ethics and intentional climate change. *Climatic Change*, **33**, 323-336.
- Jasanoff, S., 1996: Beyond epistemology: relativism and engagement in the politics of science. *Social Studies of Science*, **26**, 393-418.
- Jasanoff, S., 2010: Testing time for climate science. *Science*, **328**, 695-696.
- Jönch-Clausen, T., 2010: Application of integrated approaches in water resources management beyond the conceptual phase In: *A Review of Selected Hydrology Topics to Support Bank Operations* [García, L.E., G. Puz, and A. Mejia (eds.)]. The World Bank, Washington DC, USA, pp. 13-34.
- Jones, R., 2010: A risk management approach to climate change adaptation. In: *Climate Change Adaptation in New Zealand: Future Scenarios and Some Sectoral Perspectives* [Nottage, R.A.C., D.S. Wratt, J.F. Bornman, and K. Jones (eds.)]. New Zealand Climate Change Centre, Wellington, New Zealand, pp. 10-25.
- Jones, R., 2011: The latest iteration of IPCC uncertainty guidance – an author perspective. *Climatic Change*, **108**, 733-743.
- Jones, R.G., M. Noguier, D.C. Hassell, D. Hudson, S.S. Wilson, G.J. Jenkins, and J.F.B. Mitchell, 2004: *Generating High Resolution Climate Change Scenarios Using PRECIS*. Met Office Hadley Centre, Exeter, UK, 40 pp.
- Jones, R.N., 2001: An environmental risk assessment/management framework for climate change impact assessments. *Natural Hazards*, **23**, 197-230.
- Jones, R.N., 2012: Applying scenarios to complex issues: Australia 2050. In: *Negotiating Our Future: Living Scenarios for Australia to 2050* [Raupach, M.R., T. McMichael, John J. Finnigan, L. Manderson, and B.H. Walker (eds.)]. Vol. 2, Australian Academy of Science, Canberra, ACT, Australia, pp. 173-190.
- Jones, R.N. and B.L. Preston, 2011: Adaptation and risk management. *WIREs Climate Change*, **2**, 296-308.
- Jones, R.N., C.K. Young, J. Handmer, A. Keating, G.D. Mekala, and P. Sheehan, 2013: *Valuing Adaptation Under Rapid Change*. National Climate Change Adaptation Research Facility, Gold Coast, Australia, 182 pp.
- Jones, S.A., B. Fischhoff, and D. Lach, 1999: Evaluating the science-policy interface for climate change research. *Climatic Change*, **43**, 581-599.
- Kahan, D.M. and D. Braman, 2006: Cultural cognition and public policy. *Yale Law and Policy Review*, **24**, 147-171.
- Kahan, D.M., D. Braman, P. Slovic, J. Gastil, and G.L. Cohen, 2007: *The Second National Risk and Culture Study: Making Sense of – and Making Progress In – The American Culture War of Fact*. GWU Legal Studies Research Paper No. 370, Yale Law School Public Law Working Paper No. 154, GWU Law School Public Law Research Paper No. 370, Harvard Law School Program on Risk Regulation Research Paper No. 08-26, 20 pp., ssrn.com/abstract=1017189, doi:10.2139/ssrn.1017189.
- Kahneman, D., 2011: *Thinking, Fast and Slow*. 1st edn., Farrar, Straus, and Giroux, New York, NY, USA, 499 pp.
- Kahneman, D. and A. Tversky, 1979: Prospect theory: an analysis of decision under risk. *Econometrica*, **47**, 263-292.
- Kambhu, J., S. Weidman, and N. Krishnan, 2007: *New Directions for Understanding Systemic Risk: A Report on a Conference Cosponsored by the Federal Reserve Bank of New York and the National Academy of Sciences*. National Academies Press, Washington, DC, USA, 90 pp.
- Kandlikar, M., J. Risbey, and S. Dessai, 2005: Representing and communicating deep uncertainty in climate-change assessments. *Comptes Rendus Geoscience*, **337**, 443-455.
- Kandlikar, M., H. Zerriffi, and C. Ho Lem, 2011: Science, decision-making and development: managing the risks of climate variation in less-industrialized countries. *Wiley Interdisciplinary Reviews: Climate Change*, **2**, 201-219.
- Kasperson, R.E., 1992: The social amplification of risk: progress in developing an integrative framework in social theories of risk. In: *Social Theories of Risk* [Krimsky, S. and D. Golding (eds.)]. Praeger, Westport, CT, USA, pp. 53-178.
- Kasperson, R.E., O. Renn, P. Slovic, H.S. Brown, J. Emel, R. Goble, J.X. Kasperson, and S. Ratick, 1988: The social amplification of risk: a conceptual framework. *Risk Analysis*, **8**, 177-187.
- Kasprzyk, J.R., S. Nataraj, P.M. Reed, and R.J. Lempert, 2013: Many objective robust decision making for complex environmental systems undergoing change. *Environmental Modelling & Software*, **42**, 55-71.
- Kates, R.W., W.R. Travis, and T.J. Wilbanks, 2012: Transformational adaptation when incremental adaptations to climate change are insufficient. *Proceedings of the National Academy of Sciences of the United States of America*, **109**, 7156-7161.
- Katz, E., A. Lammel, and M. Goloubinoff (eds.), 2002: *Entre Ciel et Terre: Climat et Sociétés*. IRD Editions, Ibis Press, Paris, France, 509 pp.
- Kazdin, A.E., 2009: Psychological science's contributions to a sustainable environment: extending our reach to a grand challenge of society. *American Psychologist*, **64**, 339.
- Keeney, R.L., 1992: *Value-focused Thinking: A Path to Creative Decisionmaking*. Harvard University Press, Cambridge, MA, USA, 432 pp.
- Keeney, R.L. and H. Raiffa, 1993: *Decisions with Multiple Objectives: Preferences and Value Trade-Offs*. Cambridge University Press, Cambridge, UK, 569 pp.
- Kern, K. and G. Alber, 2008: Governing climate change in cities: modes of urban climate governance in multi-level systems. In: *Competitive Cities and Climate Change: OECD Conference Proceedings, Milan, Italy, 9-10 October 2008* [Elliott, V.C. (ed.)]. The Organisation for Economic Co-operation and Development (OECD), Paris, France, pp. 171-196.
- Kindon, S., R. Pain, and M. Kesby, 2007: *Participatory Action Research Approaches and Methods: Connecting People, Participation and Place*. Routledge, Abingdon, UK and New York, NY, USA, 288 pp.
- Kirchhoff, C.J., M.C. Lemos, and N.L. Engle, 2012: What influences climate information use in water management? The role of boundary organizations and governance regimes in Brazil and the US. *Environmental Science & Policy*, **26**, 6-18.
- Klein, R.J.T., S. Huq, F. Denton, T.E. Downing, R.G. Richels, J.B. Robinson, and F.L. Toth, 2007: Inter-relationships between adaptation and mitigation. In: *Climate Change 2007: Impacts, Adaptation and Vulnerability. Contribution of Working*

- Group II to the Fourth Assessment Report of the Intergovernmental Panel on Climate Change [Parry, M.L., O.F. Canziani, J.P. Palutikof, P.J.v.d. Linden, and C.E. Hanson (eds.)]. Cambridge University Press, Cambridge, UK and New York, NY, USA, pp. 745-777.
- Klinke, A.** and O. Renn, 2002: A new approach to risk evaluation and management: risk-based, precaution-based, and discourse-based strategies. *Risk Analysis*, **22**, 1071-1094.
- Klöckner, C.A.** and A. Blöbaum, 2010: A comprehensive action determination model: toward a broader understanding of ecological behaviour using the example of travel mode choice. *Journal of Environmental Psychology*, **30**, 574-586.
- Kolk, A.** and J. Pinkse, 2010: *The Climate Change – Development Nexus and Tripartite Partnerships*. The Partnerships Resource Centre Working Paper Series, Working Paper 006, The Partnerships Resource Centre, Rotterdam, Netherlands, 18 pp.
- Korteling, B., S. Dessai,** and Z. Kapelan, 2013: Using information-gap decision theory for water resources planning under severe uncertainty. *Water Resources Management*, **27**, 1149-1172.
- Krauss, W.,** 2011: Rooted in society. *Nature Geoscience*, **3**, 513-514.
- Krauss, W.** and H. von Storch, 2012: Post-normal practices between regional climate services and local knowledge. *Nature and Culture*, **7**, 213-230.
- Kriegler, E., B.C. O'Neill,** S. Hallegatte, T. Kram, R.J. Lempert, R.H. Moss, and T. Wilbanks, 2012: The need for and use of socio-economic scenarios for climate change analysis: a new approach based on shared socio-economic pathways. *Global Environmental Change*, **22**, 807-822.
- Krupnik, I.** and D. Jolly (eds.), 2002: *The Earth Is Faster Now: Indigenous Observations of Arctic Environmental Change*. Frontiers in Polar Social Science, Arctic Research Consortium of the United States, Fairbanks, AK, USA, 384 pp.
- Kuik, O., B. Buchner, M. Catenacci, A. Gorla, E. Karakaya,** and R. Tol, 2008: Methodological aspects of recent climate change damage cost studies. *Integrated Assessment*, **8**, 19-40.
- Kuruppu, N.,** 2009: Adapting water resources to climate change in Kiribati: the importance of cultural values and meanings. *Environmental Science & Policy*, **12**, 799-809.
- Kwadijk, J.C., M. Haasnoot, J.P. Mulder, M. Hoogvliet, A. Jeuken, R.A. van der Krogt, N.G. van Oostrom, H.A. Schelfhout, E.H. van Velzen,** and H. van Waveren, 2010: Using adaptation tipping points to prepare for climate change and sea level rise: a case study in the Netherlands. *Wiley Interdisciplinary Reviews: Climate Change*, **1**, 729-740.
- Lal, P.N., T. Mitchell, P. Aldunce, H. Auld, R. Mechler, A. Miyan, L.E. Romano,** and S. Zakaria, 2012: National systems for managing the risks from climate extremes and disasters. In: *Managing the Risks of Extreme Events and Disasters to Advance Climate Change Adaptation. A Special Report of Working Groups I and II of the Intergovernmental Panel on Climate Change* [Field, C.B., V. Barros, T.F. Stocker, D. Qin, D.J. Dokken, K.L. Ebi, M.D. Mastrandrea, K.J. Mach, G.-K. Plattner, S.K. Allen, M. Tignor, and P.M. Midgley (eds.)]. Cambridge University Press, Cambridge, UK and New York, NY, USA, pp. 339-392.
- Lammel, A.** and T. Kozakai, 2005: Percepción y representación de los riesgos de la contaminación atmosférica según el pensamiento holístico y el pensamiento analítico. *Desacatos*, **19**, 85-98.
- Lammel, A., M. Goloubinoff,** and E. Katz, 2008: *Aires y Lluvias. Antropología del Clima en México*. Centro de Investigaciones y Estudios Superiores en Antropología Social (CIESAS) and Centro de Estudios Mexicanos y Centroamericanos (CEMCA), and Institut de Recherche pour le Développement (IRD), Publications de la casa chata, Mexico City, Mexico, 640 pp.
- Lammel, A., C. Guillen, E. Dugas,** and F. Jamet, 2010: Cultural and environmental changes: cognitive adaptation to global warming. In: *Steering the Cultural Dynamics: Selected Papers from the 2010 Congress of the International Association for Cross-Cultural Psychology* [Kashima, Y., E. Kashima, and R. Beatson (eds.)]. eBook, International Association for Cross-Cultural Psychology (IACCP), Melbourne, Australia, pp. 49-58, www.iaccp.org/drupal/sites/default/files/melbourne_pdf/Melbourne%20Proceedings.pdf.
- Lammel, A., E. Dugas,** and C. Guillen, 2011: Traditional way of thinking and prediction of climate change in New Caledonia (France). *Indian Journal of Traditional Knowledge*, **10**, 13-20.
- Lammel, A., E. Dugas,** and E. Guillen Gutierrez, 2012: L'apport de la psychologie cognitive à l'étude de l'adaptation aux changements climatiques: la notion de vulnérabilité cognitive. *Vertigo – la revue électronique en sciences de l'environnement*, **12(1)**, doi:10.4000/vertigo.11915.
- László, J.** and B. Ehmann, 2012: Narrative social psychology. In: *Social Cognition and Communication* [Laszlo, J., J. Forgas, and O. Vincze (eds.)]. Vol. 15, Sydney Symposium of Social Psychology Series, Report from EASP Small Group Meeting on Social Cognition and Communication, 9 -12th July, 2012, Pecs, Hungary, Psychology Press (Taylor and Francis Group), New York, NY, USA, pp. 205-228.
- Lateef, F.,** 2009: Cyclone Nargis and Myanmar: a wake up call. *Journal of Emergencies, Trauma and Shock*, **2**, 106-113.
- Leary, N., J. Adejuwon, V. Barros, I. Burton, J. Kulkarni,** and R. Lasco (eds.), 2008: *Climate Change and Adaptation*, Earthscan, London, UK, 381 pp.
- Lebel, L., T. Grothmann,** and B. Siebenhüner, 2010: The role of social learning in adaptiveness: insights from water management. *International Environmental Agreements: Politics, Law and Economics*, **10**, 333-353.
- Leichenko, R.,** 2011: Climate change and urban resilience. *Current Opinion in Environmental Sustainability*, **3**, 164-168.
- Leiserowitz, A.,** 2006: Climate change risk perception and policy preferences: the role of affect, imagery, and values. *Climatic Change*, **77**, 45-72.
- Lempert, R.J.,** 2012: Scenarios that illuminate vulnerabilities and robust responses. *Climatic Change*, **117(4)**, 627-646.
- Lempert, R.J.** and M.T. Collins, 2007: Managing the risk of uncertain threshold responses: comparison of robust, optimum, and precautionary approaches. *Risk Analysis*, **27**, 1009-1026.
- Lempert, R.J.** and N. Kalra, 2011: *Managing Climate Risks in Developing Countries with Robust Decision Making*. World Resources Report Uncertainty Series, World Resources Institute, Washington, DC, USA, 9 pp.
- Lempert, R.J.** and S. McKay, 2011: Some thoughts on the role of robust control theory in climate-related decision support. *Climatic Change*, **107**, 241-246.
- Lempert, R.J.** and M.E. Schlesinger, 2002: Adaptive strategies for climate change. In: *Innovative Energy Strategies for CO₂ Stabilization* [Watts, R.G. (ed.)]. Cambridge University Press, New York, NY, USA, pp. 45-85.
- Lempert, R.J., N. Nakicenovic, D. Sarewitz,** and M. Schlesinger, 2004: Characterizing climate-change uncertainties for decision-makers: an editorial essay. *Climatic Change*, **65**, 1-9.
- Lindell, M.K.** and R.W. Perry, 2012: The protective action decision model: theoretical modifications and additional evidence. *Risk Analysis*, **32**, 616-632.
- Llasat, M.C., M. Llasat-Botija,** and L. López, 2009: A press database on natural risks and its application in the study of floods in Northeastern Spain. *Natural Hazards and Earth System Sciences*, **9**, 2049-2061.
- Lobell, D.B., M.B. Burke, C. Tebaldi, M.D. Mastrandrea, W.P. Falcon,** and R.L. Naylor, 2008: Prioritizing climate change adaptation needs for food security in 2030. *Science*, **319**, 607-610.
- Lorenzoni, I., A. Leiserowitz, M.D.F. Doria, W. Poortinga,** and N.F. Pidgeon, 2006: Cross-national comparisons of image associations with "global warming" and "climate change" among laypeople in the United States of America and Great Britain. *Journal of Risk Research*, **9**, 265-281.
- Lundgren, R.E.** and A.H. McMakin, 2013: *Risk Communication: A Handbook for Communicating Environmental, Safety, and Health Risks*. John Wiley & Sons, Hoboken, NJ, USA, 416 pp.
- Macaulay, A.C., L.E. Commanda, W.L. Freeman, N. Gibson, M.L. McCabe, C.M. Robbins,** and P.L. Twohig, 1999: Participatory research maximises community and lay involvement. *British Medical Journal*, **319**, 774-778.
- Macintosh, A., A. Foerster,** and J. McDonald, 2013: *Limp, Leap or Learn? Developing Legal Frameworks for Climate Change Adaptation Planning in Australia*. National Climate Change Adaptation Research Facility (NCCARF), Gold Coast, Australia, 277 pp.
- Maddux, J.E.** and R.W. Rogers, 1983: Protection motivation and self-efficacy: a revised theory of fear appeals and attitude change. *Journal of Experimental Social Psychology*, **19**, 469-479.
- Madzwamuse, M.,** 2010: *Climate Governance in Africa – Adaptation Strategies and Institutions*. Heinrich Böll Stiftung, Cape Town, South Africa, 110 pp.
- Magistro, J.** and C. Roncoli, 2001: Anthropological perspectives and policy implications of climate change research. *Climate Research*, **19**, 91-96.
- Mahony, M.** and M. Hulme, 2012: Model migrations: mobility and boundary crossings in regional climate prediction. *Transactions of the Institute of British Geographers*, **37**, 197-211.
- Martin, J., P. Fackler, J. Nichols, B. Lubow, M. Eaton, M. Runge, B. Stith,** and C. Langtimm, 2011: Structured decision making as a proactive approach to dealing with sea level rise in Florida. *Climatic Change*, **107(1-2)**, 185-202.
- Marx, S.M., E.U. Weber, B.S. Orlove, A. Leiserowitz, D.H. Krantz, C. Roncoli,** and J. Phillips, 2007: Communication and mental processes: experiential and analytic processing of uncertain climate information. *Global Environmental Change*, **17**, 47-58.

- Mastrandrea, M.D., C.B. Field, T.F. Stocker, O. Edenhofer, K.L. Ebi, D.J. Frame, H. Held, E. Kriegler, K.J. Mach, P.R. Matschoss, G.-K. Plattner, G.W. Yohe, and F.W. Zwiars, 2010:** *Guidance Note for Lead Authors of the IPCC Fifth Assessment Report on Consistent Treatment of Uncertainties*. Intergovernmental Panel on Climate Change (IPCC), Geneva, Switzerland, 6 pp.
- McCray, L.E., K.A. Oye, and A.C. Petersen, 2010:** Planned adaptation in risk regulation: an initial survey of US environmental, health, and safety regulation. *Technological Forecasting and Social Change*, **77**, 951-959.
- McDonald, G. and M.B. Lane, 2004:** Converging global indicators for sustainable forest management. *Forest Policy and Economics*, **6**, 63-70.
- McEvoy, J. and M. Wilder, 2012:** Discourse and desalination: potential impacts of proposed climate change adaptation interventions in the Arizona-Sonora border region. *Global Environmental Change*, **22**, 353-363.
- McGray, H., A. Hammill, R. Bradley, E.L. Schipper, and J.-E. Parry, 2007:** *Weathering the Storm: Options for Framing Adaptation and Development*. World Resources Institute, Washington, DC, USA, 57 pp.
- McNie, E.C., 2007:** Reconciling the supply of scientific information with user demands: an analysis of the problem and review of the literature. *Environmental Science & Policy*, **10**, 17-38.
- Meadowcroft, J., 2009:** *Climate Change Governance*. Policy Research Working Paper 4941, The World Bank, Washington, DC, USA, 40 pp.
- Measham, T., B. Preston, T. Smith, C. Brooke, R. Gorddard, G. Withycombe, and C. Morrison, 2011:** Adapting to climate change through local municipal planning: barriers and challenges. *Mitigation and Adaptation Strategies for Global Change*, **18**, 889-909.
- Meijnders, A.L., C.J. Midden, and H.A. Wilke, 2002:** Role of negative emotion in communication about CO₂ risks. *Risk Analysis*, **21**, 955-955.
- Mercer, J., I. Kelman, K. Lloyd, and S. Suchet-Pearson, 2008:** Reflections on use of participatory research for disaster risk reduction. *Area*, **40**, 172-183.
- Mercer, J., I. Kelman, S. Suchet-Pearson, and K. Lloyd, 2009:** Integrating indigenous and scientific knowledge bases for disaster risk reduction in Papua New Guinea. *Geografiska Annaler: Series B, Human Geography*, **91**, 157-183.
- Metzger, M.J. and D. Schröter, 2006:** Towards a spatially explicit and quantitative vulnerability assessment of environmental change in Europe. *Regional Environmental Change*, **6**, 201-216.
- Meuleman, L. and R.J. in 't Veld, 2010:** Sustainable development and the governance of long-term decisions. In: *Knowledge Democracy: Consequences for Science, Politics, and Media* [in 't Veld, R.J. (ed.)]. Springer-Verlag Berlin Heidelberg, Germany, pp. 255-281.
- Miles, E.L., A.K. Snover, L.C. Whitely Binder, E.S. Sarachik, P.W. Mote, and N. Mantua, 2006:** An approach to designing a national climate service. *Proceedings of the National Academy of Sciences of the United States of America*, **103**, 19616-19623.
- Milfont, T.L., 2012:** The interplay between knowledge, perceived efficacy, and concern about global warming and climate change: a one-year longitudinal study. *Risk Analysis*, **32**, 1003-1020.
- Milfont, T.L. and V.V. Gouveia, 2006:** Time perspective and values: an exploratory study of their relations to environmental attitudes. *Journal of Environmental Psychology*, **26**, 72-82.
- Milfont, T.L., C.G. Sibley, and J. Duckitt, 2010:** Testing the moderating role of the components of norm activation on the relationship between values and environmental behavior. *Journal of Cross-Cultural Psychology*, **41**, 124-131.
- Mills, E., 2005:** Insurance in a climate of change. *Science*, **309**, 1040-1044.
- Minteer, B.A. and J.P. Collins, 2005a:** Ecological ethics: building a new tool kit for ecologists and biodiversity managers. *Conservation Biology*, **19**, 1803-1812.
- Minteer, B.A. and J.P. Collins, 2005b:** Why we need an "ecological ethics". *Frontiers in Ecology and the Environment*, **3**, 332-337.
- Minteer, B.A. and J.P. Collins, 2010:** Move it or lose it? The ecological ethics of relocating species under climate change. *Ecological Applications*, **20**, 1801-1804.
- Mitchell, R.B., 2006:** *Global Environmental Assessments*. MIT Press, Cambridge, MA, USA, 344 pp.
- Monterroso, A., C. Conde, C. Gay, D. Gómez, and J. López, 2012:** Two methods to assess vulnerability to climate change in the Mexican agricultural sector. *Mitigation and Adaptation Strategies for Global Change*, doi:10.1007/s11027-012-9442-y.
- Montréal Process, 2009:** *Criteria and Indicators for the Conservation and Sustainable Management of Temperate and Boreal Forests*. The Montréal Process, 4th edn., Montreal Process Liaison Office, Tokyo, Japan, 29 pp.
- Morgan, M.G., 2002:** *Risk Communication: A Mental Models Approach*. Cambridge University Press, New York, NY, USA, 351 pp.
- Morgan, M.G., M. Henrion, and M. Small, 1990:** *Uncertainty: A Guide to Dealing with Uncertainty in Quantitative Risk and Policy Analysis*. Cambridge University Press, Cambridge, UK and New York, NY, USA, 332 pp.
- Moser, S., 2009:** Making a difference on the ground: the challenge of demonstrating the effectiveness of decision support. *Climatic Change*, **95**, 11-21.
- Moser, S.C. and J.A. Ekstrom, 2010:** A framework to diagnose barriers to climate change adaptation. *Proceedings of the National Academy of Sciences of the United States of America*, **107**, 22026-22031.
- Moss, R.H., J.A. Edmonds, K.A. Hibbard, M.R. Manning, S.K. Rose, D.P. van Vuuren, T.R. Carter, S. Emori, M. Kainuma, T. Kram, G.A. Meehl, J.F.B. Mitchell, N. Nakicenovic, K. Riahi, S.J. Smith, R.J. Stouffer, A.M. Thomson, J.P. Weyant, and T.J. Wilbanks, 2010:** The next generation of scenarios for climate change research and assessment. *Nature*, **463**, 747-756.
- Mullis, J.P. and T.S. Duval, 1995:** Negative threat appeals and earthquake preparedness: a person-relative-to-event (PrE) model of coping with threat. *Journal of Applied Social Psychology*, **25**, 1319-1339.
- Munich Re Group, 2011:** *Topics Geo: Natural Catastrophes 2010: Analyses, Assessments, Positions*. Münchener Rückversicherungs-Gesellschaft, Munich, Germany, 56 pp.
- Murphy, J., D. Sexton, G. Jenkins, B. Booth, C. Brown, R. Clark, M. Collins, G. Harris, E. Kendon, and R. Betts, 2009:** *UK Climate Projections Science Report: Climate Change Projections*. Met Office Hadley Centre, Exeter, UK, 192 pp.
- Nakashima, D.J., G.K. Mclean, H.D. Thulstrup, R. Castillo, and J.T. Rubis, 2012:** *Weathering Uncertainty: Traditional Knowledge for Climate Change Assessment and Adaptation*. United Nations Educational, Scientific, and Cultural Organization (UNESCO), Paris, France, and United Nations University (UNU), Darwin, Australia, 120 pp.
- Nanda, V.P., 2012:** *Climate Change and Environmental Ethics*. Transaction Publishers, New Brunswick, NJ, USA, 262 pp.
- Narain, U., S. Margulis, and T. Essam, 2011:** Estimating costs of adaptation to climate change. *Climate Policy*, **11**, 1001-1019.
- National Research Council, 2001:** *A Climate Services Vision: First Steps Toward the Future*. National Academic Press, Washington DC, USA, 84 pp.
- National Research Council, 2007:** *Research and Networks for Decision Support in the NOAA Sectoral Applications Research Program* [Ingram, H.M. and P.C. Stern (eds.)]. National Academies Press, Washington, DC, USA, 85 pp.
- National Research Council, 2009a:** *Informing Decisions in a Changing Climate*. National Academies Press, Washington DC, USA, 201 pp.
- National Research Council, 2009b:** *Science and Decisions: Advancing Risk Assessment*. National Academies Press, Washington, DC, USA, 424 pp.
- National Research Council, 2011:** *America's Climate Choices*. The National Academies Press, Washington DC, USA, 144 pp.
- Nelson, D.R., W.N. Adger, and K. Brown, 2007:** Adaptation to environmental change: contributions of a resilience framework. *Annual Review of Environment and Resources*, **32**, 395-419.
- Nelson, J.A., 2011:** The relational economy. In: *Ethical Principles and Economic Transformation – A Buddhist Approach* [Zsolnai, L. (ed.)]. Vol. 33, Springer, Dordrecht, Netherlands, pp. 21-33.
- New, M., A. Lopez, S. Dessai, and R. Wilby, 2007:** Challenges in using probabilistic climate change information for impact assessments: an example from the water sector. *Philosophical Transactions of the Royal Society A*, **365**, 2117-2131.
- Nilsson, A., C. von Borgstede, and A. Biel, 2004:** Willingness to accept climate change strategies: the effect of values and norms. *Journal of Environmental Psychology*, **24**, 267-277.
- Nisbett, R.E. and Y. Miyamoto, 2005:** The influence of culture: holistic versus analytic perception. *Trends in Cognitive Sciences*, **9**, 467-473.
- Nisbett, R.E., K. Peng, I. Choi, and A. Norenzayan, 2001:** Culture and system of thought: holistic versus analytic cognition. *Psychological Review*, **108**, 291-310.
- Nordhaus, W.D., 2007:** A review of the "Stern Review on the Economics of Climate Change". *Journal of Economic Literature*, **45**, 686-702.
- North, D.C., 1990:** *Institutions, Institutional Change and Economic Performance*. Cambridge University Press, New York, NY, USA, 152 pp.
- Nyong, A., F. Adesina, and B. Osman Elasha, 2007:** The value of indigenous knowledge in climate change mitigation and adaptation strategies in the African Sahel. *Mitigation and Adaptation Strategies for Global Change*, **12**, 787-797.
- O'Brien, K., 2012:** Global environmental change II: from adaptation to deliberate transformation. *Progress in Human Geography*, **36**, 667-676.

- O'Brien, K., S. Eriksen, L.P. Nygaard, and A. Schjolden, 2007: Why different interpretations of vulnerability matter in climate change discourses. *Climate Policy*, **7**, 73-88.
- O'Brien, K., B. Hayward, and F. Berkes, 2009: Rethinking social contracts: building resilience in a changing climate. *Ecology and Society*, **14**(2), 12, www.ecologyandsociety.org/vol14/iss2/art12/.
- O'Brien, K., A.L.S. Clair and B. Kristoffersen, (eds.), 2010: *Climate Change, Ethics And Human Security*, Cambridge University Press, Cambridge, UK, 231 pp.
- O'Brien, K., J. Reams, A. Caspari, A. Dugmore, M. Faghihmani, I. Fazey, H. Hackmann, D. Manuel-Navarrete, J. Marks, R. Miller, K. Raivio, P. Romero-Lankao, H. Virji, C. Vogel and V. Winiwarter, 2013: You say you want a revolution? Transforming education and capacity building in response to global change. *Environmental Science & Policy*, **28**, 48-59.
- O'Neill, B., E. Kriegler, K. Riahi, K. Ebi, S. Hallegatte, T. Carter, R. Mathur, and D. van Vuuren, 2013: A new scenario framework for climate change research: the concept of shared socio-economic pathways. *Climatic Change*, **122**, 387-400, doi:10.1007/s10584-013-0905-2.
- O'Neill, S. and S. Nicholson-Cole, 2009: "Fear won't do it": promoting positive engagement with climate change through visual and iconic representations. *Science Communication*, **30**, 355-379.
- Ogden, A.E. and J.L. Innes, 2009: Application of structured decision making to an assessment of climate change vulnerabilities and adaptation options for sustainable forest management. *Ecology and Society*, **14**(1), 11, www.ecologyandsociety.org/vol14/iss2/art12/.
- Ohlson, D.W., G.A. McKinnon, and K.G. Hirsch, 2005: A structured decision-making approach to climate change adaptation in the forest sector. *Forestry Chronicle*, **81**, 97-103.
- Oreskes, N. and E.M. Conway, 2010: *Merchants of Doubt: How a Handful of Scientists Obscured the Truth on Issues From Tobacco Smoke to Global Warming*, 1st U.S. edn., Bloomsbury Press, New York, NY, USA, 355 pp.
- Orlove, B., 2009: The past, the present, and some possible futures of adaptation. In: *Adapting to Climate Change: Thresholds, Values, Governance* [Adger, N., I. Lorenzoni, and K. O'Brien (eds.)]. Cambridge University Press, Cambridge, UK, pp. 131-163.
- Orlove, B. and M. Kabugo, 2005: Signs and sight in southern Uganda: representing perception in ordinary conversation. *Etnofoor*, **18**, 124-141.
- Orlove, B., C. Roncoli, M. Kabugo, and A. Majugu, 2010: Indigenous climate knowledge in southern Uganda: the multiple components of a dynamic regional system. *Climatic Change*, **100**, 243-265.
- Oskamp, S. and P.W. Schultz, 2006: Using psychological science to achieve sustainability. In: *Applied Psychology: New Frontiers and Rewarding Careers* [Donaldson, S., D. Berger, and K. Pezdek (eds.)]. Lawrence Erlbaum, Mahwah, NJ, USA, pp. 81-106.
- Pahl-Wostl, C., 2007: Transitions towards adaptive management of water facing climate and global change. *Water Resources Management*, **21**, 49-62.
- Park, S., N. Marshall, E. Jakku, A. Dowd, S. Howden, E. Mendham, and A. Fleming, 2012: Informing adaptation responses to climate change through theories of transformation. *Global Environmental Change*, **22**, 115-126.
- Parry, M.L. and T.R. Carter, 1998: *Climate Impact and Adaptation Assessment: A Guide to the IPCC Approach*. Earthscan, London, UK, 166 pp.
- Parson, E.A., 2008: Useful global-change scenarios: current issues and challenges. *Environmental Research Letters*, **3**(4), 045016, doi:10.1088/1748-9326/3/4/045016.
- Parson, E.A., V.R. Burkett, K. Fischer-Vanden, D.W. Keith, L.O. Mearns, H.M. Pitcher, C.E. Rosenzweig, and M.D. Webster, 2007: *Global-Change Scenarios: Their Development and Use*. Sub-report 2.1B of Synthesis and Assessment Product 2.1 by the U.S. Climate Change Science Program and the Subcommittee on Global Change Research, Department of Energy, Office of Biological & Environmental Research, Washington, DC, USA, 106 pp.
- Paton, K. and P. Fairbairn-Dunlop, 2010: Listening to local voices: Tuvaluans respond to climate change. *Local Environment*, **15**, 687-698.
- Patt, A. and S. Dessai, 2005: Communicating uncertainty: lessons learned and suggestions for climate change assessment. *Comptes Rendus Geoscience*, **337**, 425-441.
- Patt, A.G. and D.P. Schrag, 2003: Using specific language to describe risk and probability. *Climatic Change*, **61**, 17-30.
- Pearce, T.D., J.D. Ford, G.J. Laidler, B. Smit, F. Duerden, M. Allarut, M. Andrachuk, S. Baryluk, A. Dialla, P. Elee, A. Goose, T. Ikummaq, E. Joamie, F. Kataoyak, E. Loring, S. Meakin, S. Nickels, K. Shappa, J. Shirley, and J. Wandel, 2009: Community collaboration and climate change research in the Canadian Arctic. *Polar Research*, **28**, 10-27.
- Pedlar, J.H., D.W. McKenney, I. Aubin, T. Beardmore, J. Beaulieu, L. Iverson, G.A. O'Neill, R.S. Winder, and C. Ste-Marie, 2012: Placing forestry in the assisted migration debate. *BioScience*, **62**(9), 835-842.
- Pelling, M., C. High, J. Dearing, and D. Smith, 2008: Shadow spaces for social learning: a relational understanding of adaptive capacity to climate change within organisations. *Environment and Planning A*, **40**, 867-884.
- Peng, K. and R.E. Nisbett, 1999: Culture, dialectics, and reasoning about contradiction. *American Psychologist*, **54**, 741-754.
- Pereira, A.G. and S.C. Quintana, 2002: From technocratic to participatory decision support systems: responding to the new governance initiatives. *Journal of Geographic Information and Decision Analysis*, **6**, 95-107.
- Perlovsky, L., 2009: Language and cognition. *Neural Networks*, **22**, 247-257.
- Peschl, M.F., 2007: From double-loop learning to triple-loop learning profound change, individual cultivation, and the role of wisdom in the context of the microlearning approach. In: *Didactics of Microlearning: Concepts, Discourses and Examples* [Hug, T. (ed.)]. Waxman, Munster, Germany and New York, NY, USA, pp. 292-312.
- Pidgeon, N. and B. Fischhoff, 2011: The role of social and decision sciences in communicating uncertain climate risks. *Nature Climate Change*, **1**, 35-41.
- Pidgeon, N., R. Kasperson, and P. Slovic (eds.), 2003: *The Social Amplification of Risk*. Cambridge University Press, Cambridge, UK, 468 pp.
- Pielke, R.A., 1998: Rethinking the role of adaptation in climate policy. *Global Environmental Change*, **8**, 159-170.
- PIK, 2012: *4°C Turn Down the Heat: Why a 4°C Warmer World Must be Avoided*. A Report for the World Bank by the Potsdam Institute for Climate Impact Research and Climate Analytics (PIK), The World Bank, Washington, DC, USA, 84 pp.
- Portier, C.J., K.T. Tart, S.R. Carter, C.H. Dilworth, A.E. Grambsch, J. Golke, J. Hess, S. Howard, G. Luber, and J. Lutz, 2010: *A Human Health Perspective on Climate Change: A Report Outlining the Research Needs on the Human Health Effects of Climate Change*. Environmental Health Perspectives and National Institute of Environmental Health Sciences, Research Triangle Park, NC, USA, 70 pp.
- Posthumus, H., C.J.M. Hewett, J. Morris, and P.F. Quinn, 2008: Agricultural land use and flood risk management: engaging with stakeholders in North Yorkshire. *Agricultural Water Management*, **95**, 787-798.
- Power, M., 2007: *Organized Uncertainty: Designing a World of Risk Management*. Oxford University Press, Oxford, UK and New York, NY, USA, 248 pp.
- Preston, B., C. Brooke, T. Measham, T. Smith, and R. Gorrdard, 2009: Igniting change in local government: lessons learned from a bushfire vulnerability assessment. *Mitigation and Adaptation Strategies for Global Change*, **14**, 251-283.
- Preston, B.L., E. Yuen and R. Westaway, 2011: Putting vulnerability to climate change on the map: a review of approaches, benefits, and risks. *Sustainability Science*, **6**, 177-202.
- Preston, B.L., J. Mustelin, and M.C. Maloney, 2013: Climate adaptation heuristics and the science/policy divide. *Mitigation and Adaptation Strategies for Global Change*, 31 pp. (in press), doi:10.1007/s11027-013-9503-x.
- Pulwarty, R.S., C. Simpson, and C.R. Nierenberg, 2009: The Regional Integrated Sciences and Assessments (RISA) Program: crafting effective assessments for the long haul. In: *Integrated Regional Assessment of Global Climate Change* [Knight, C.G. and J. Jager (eds.)]. Cambridge University Press, Cambridge, UK, pp. 367-393.
- Quay, R., 2010: Anticipatory governance: a tool for climate change adaptation. *Journal of the American Planning Association*, **76**, 496-511.
- Raadgever, G.T., E. Mostert, and N.C. van de Giesen, 2008: Identification of stakeholder perspectives on future flood management in the Rhine basin using Q methodology. *Hydrology and Earth System Sciences*, **12**, 1097-1109.
- Radford, L., 2009: Why do gestures matter? Sensuous cognition and the palpability of mathematical meanings. *Educational Studies in Mathematics*, **70**, 111-126.
- Rajeev Gowda, M., J. Fox, and R. Magelky, 1997: Students' understanding of climate change: insights for scientists and educators. *Bulletin of the American Meteorological Society*, **78**, 2232-2240.
- Ranger, N., A. Millner, S. Dietz, S. Fankhauser, A. Lopez, and G. Ruta, 2010: *Adaptation in the UK: A Decision Making Process*. Grantham/CCCEP Policy Brief, Environment Agency, London, UK, 61 pp.
- Raskin, P., F. Monks, T. Ribeiro, D. van Vuuren, and M. Zurek, 2005: Global scenarios in historical perspective. In: *Ecosystems and Human Well-Being: Scenarios. Findings of the Scenarios Working Group, Millennium Ecosystem Assessment* [Carpenter, S.R., P.L. Pingali, E.M. Bennett, and M.B. Zurek (eds.)]. Island Press, Washington DC, USA pp. 35-44.

- Reid, S., B. Smit, W. Caldwell, and S. Belliveau, 2007: Vulnerability and adaptation to climate risks in Ontario agriculture. *Mitigation and Adaptation Strategies for Global Change*, **12**, 609-637.
- Renn, O., 2008: *Risk Governance: Coping With Uncertainty in a Complex World*. Earthscan, London, UK and Sterling, VA, USA, 455 pp.
- Renn, O., 2011: The social amplification/attenuation of risk framework: application to climate change. *Wiley Interdisciplinary Reviews: Climate Change*, **2**, 154-169.
- Renn, O. and A. Klinke, 2004: Systemic risks: a new challenge for risk management. *EMBO reports*, **5**, S41-S46.
- Renn, O., W.J. Burns, J.X. Kasperson, R.E. Kasperson, and P. Slovic, 1992: The social amplification of risk: theoretical foundations and empirical applications. *Journal of Social Issues*, **48**, 137-160.
- Renn, O., A. Klinke, and M. van Asselt, 2011: Coping with complexity, uncertainty and ambiguity in risk governance: a synthesis. *Ambio*, **40**, 231-246.
- Reser, J.P., S.A. Morrissey, and M. Ellul, 2011: The threat of climate change: psychological response, adaptation, and impacts. In: *Climate Change and Human Well-Being: Global Challenges And Opportunities* [Weissbecker, I. (ed.)]. Springer Science, New York, NY, USA, pp. 19-42.
- Rickards, L. and S. Howden, 2012: Transformational adaptation: agriculture and climate change. *Crop and Pasture Science*, **63**, 240-250.
- Rittel, H. and M. Webber, 1973: Dilemmas in a general theory of planning. *Policy Sciences*, **4**, 155-69.
- Roberts, D., R. Boon, N. Diederichs, E. Douwes, N. Govender, A. McInnes, C. Mclean, S. O'Donoghue, and M. Spiers, 2012: Exploring ecosystem-based adaptation in Durban, South Africa: "learning-by-doing" at the local government coal face. *Environment and Urbanization*, **24**, 167-195.
- Robinson, J., M. Bradley, P. Busby, D. Connor, A. Murray, B. Sampson, and W. Soper, 2006: Climate change and sustainable development: realizing the opportunity. *AMBIO: A Journal of the Human Environment*, **35**, 2-8.
- Roeser, S., 2012: Risk communication, public engagement, and climate change: a role for emotions. *Risk Analysis*, **32**, 1033-1040.
- Rogers, R.W., 1975: A protection motivation theory of fear appeals and attitude change. *The Journal of Psychology*, **91**, 93-114.
- Romsdahl, R. and C. Pyke, 2009: What does decision support mean to the climate change research community? *Climatic Change*, **95**, 1-10.
- Roncoli, C., T. Crane, and B. Orlove, 2009: Fielding climate change in cultural anthropology. In: *Anthropology and Climate Change: From Encounters to Actions* [Crate, S.A. and M. Nuttall (eds.)]. Left Coast Press, San Francisco, CA, USA, pp. 87-115.
- Rosa, E., 2003: The logical structure of the social amplification of risk framework (SARF): metatheoretical foundations and policy implications. In: *The Social Amplification of Risk* [Pidgeon, N., R. Kasperson, and P. Slovic (eds.)]. Cambridge University Press, Cambridge, UK, pp. 46-76.
- Rosa, E.A., 2008: White, black, and gray: critical dialogue with the International Risk Governance Council's Framework for Risk Governance. In: *Global Risk Governance* [Bunting, C. (ed.)]. Vol. 1, Springer, Dordrecht, Netherlands, pp. 101-118.
- Rosenau, J.N., 2005: Strong demand, huge supply: governance in an emerging epoch. In: *Multi-level Governance* [Bache, I. and M. Flinders (eds.)]. Oxford University Press, Oxford, UK, pp. 31-48.
- Rosenhead, J., 1989: *Rational Analysis for a Problematic World: Problem Structuring Methods for Complexity, Uncertainty, and Conflict*. John Wiley & Sons, Chichester, UK and New York, NY, USA, 370 pp.
- Rosenzweig, C., W.D. Solecki, S.A. Hammer, and S. Mehrotra, (eds.), 2011: *Climate Change and Cities: First Assessment Report of the Urban Climate Change Research Network*. Cambridge University Press, Cambridge, UK, 312 pp.
- Rudiak-Gould, P., 2011: Climate change and anthropology: the importance of reception studies. *Anthropology Today*, **27**, 9-12.
- Ruhl, J., 2010a: Climate change adaptation and the structural transformation of environmental law. *Environmental Law*, **40**, 363-431.
- Ruhl, J., 2010b: General design principles for resilience and adaptive capacity in legal systems – with applications to climate change adaptation. *North Carolina Law Review*, **89**, 1373-1401.
- Ruttan, V.W., D.E. Bell, and W.C. Clark, 1994: Climate change and food security: agriculture, health and environmental research. *Global Environmental Change*, **4**, 63-77.
- Saavedra, C. and W.W. Budd, 2009: Climate change and environmental planning: working to build community resilience and adaptive capacity in Washington State, USA. *Habitat International*, **33**, 246-252.
- Salter, J., J. Robinson, and A. Wiek, 2010: Participatory methods of integrated assessment – a review. *Wiley Interdisciplinary Reviews: Climate Change*, **1**, 697-717.
- Sandler, R., 2009: The value of species and the ethical foundations of assisted colonization. *Conservation Biology*, **24**, 424-431.
- Sarewitz, D. and R.A. Pielke Jr, 2007: The neglected heart of science policy: reconciling supply of and demand for science. *Environmental Science & Policy*, **10**, 5-16.
- Scannell, L. and R. Gifford, 2013: Personally relevant climate change: the role of place attachment and local versus global message framing in engagement. *Environment and Behavior*, **45**, 60-85.
- Schaffrin, A., 2011: No measure without concept. a critical review on the conceptualization and measurement of environmental concern. *International Review of Social Research*, **1**, 11-31.
- Schalow, F., 2000: Who speaks for the animals? Heidegger and the question of animal welfare. *Environmental Ethics*, **22**, 259-272.
- Schipper, E.L.F., 2007: *Climate Change Adaptation and Development: Exploring the Linkages*. Tyndall Centre for Climate Change Research Working Paper 107, Tyndall Centre for Climate Change Research, Norwich, UK, 20 pp.
- Schneider, S.H., S. Semenov, A. Patwardhan, I. Burton, C.H.D. Magadza, M. Oppenheimer, A.B. Pittock, A. Rahman, J.B. Smith, A. Suarez, and F. Yamin, 2007: Assessing key vulnerabilities and the risk from climate change. In: *Climate Change 2007: Impacts, Adaptation And Vulnerability. Contribution of Working Group II to the Fourth Assessment Report of the Intergovernmental Panel on Climate Change* [Parry, M.L., O.F. Canziani, J.P. Palutikof, P.J. van der Linden, and C.E. Hanson (eds.)]. Cambridge University Press, Cambridge, UK and New York, NY, USA, pp. 779-810.
- Schroth, O., E. Pond, C. Campbell, P. Cizek, S. Bohus, and S.R.J. Sheppard, 2011: Tool or toy? Virtual globes in landscape planning. *Future Internet*, **3**, 204-227.
- Schultz, W.P., C. Shriver, J.J. Tanbanico, and A.M. Khazian, 2004: Implicit connections with nature. *Journal of Environmental Psychology*, **24**, 31-42.
- Semazzi, F.H.M., 2011: Framework for climate services in developing countries. *Climate Research*, **47**, 145-150.
- Sen, A.K., 2009: *The Idea of Justice*. Harvard University Press, Cambridge, MA, USA, 496 pp.
- Seppälä, R., A. Buck, and P. Katila (eds.), 2009: *Adaptation of Forests and People to Climate Change. A Global Assessment Report*. International Union of Forest Research Organizations (IUFRO), Helsinki, Finland, 224 pp.
- Shafer, M.A., 2004: Climate services: where do we go from here? In: *Proceedings of the 14th Conference on Applied Climatology, Seattle, WA, January 11-15*. American Meteorological Society, Boston, MA, USA, 9 pp., ams.confex.com/ams/84Annual/techprogram/paper_72822.htm.
- Shaw, A., S. Sheppard, S. Burch, D. Flanders, A. Wiek, J. Carmichael, J. Robinson, and S. Cohen, 2009: Making local futures tangible – synthesizing, downscaling, and visualizing climate change scenarios for participatory capacity building. *Global Environmental Change*, **19**, 447-463.
- Shepherd, P., J. Tansey, and H. Dowlatabadi, 2006: Context matters: what shapes adaptation to water stress in the Okanagan? *Climatic Change*, **78**, 31-62.
- Sheppard, S.R.J., 2012: *Visualizing Climate Change: A Guide to Visual Communication of Climate Change and Developing Local Solutions*. Earthscan/Routledge, London, UK, 514 pp.
- Sheppard, S.R.J., A. Shaw, D. Flanders, S. Burch, A. Wiek, J. Carmichael, J. Robinson, and S. Cohen, 2011: Future visioning of local climate change: a framework for community engagement and planning with scenarios and visualisation. *Futures*, **43**, 400-412.
- Shwom, R., A. Dan, and T. Dietz, 2008: The effects of information and state of residence on climate change policy preferences. *Climatic Change*, **90**, 343-358.
- Sivakumar, M., P. Bessemoulin, T.C. Peterson, and G. Asrar, 2011: Changing climate and demands for sustainable development. *Climate Research*, **47**, 3-4.
- Smit, B. and J. Wandel, 2006: Adaptation, adaptive capacity and vulnerability. *Global Environmental Change*, **16**, 282-292.
- Snober, A.K., L. Whately Binder, J. Lopez, E. Willmott, J. Kay, D. Howell, and J. Simmonds, 2007: *Preparing for Climate Change: A Guidebook for Local, Regional and State Governments*. ICLEI-Local Government for Sustainability, Oakland, CA, USA, 172 pp.
- Soyez, K., S. Hoffmann, S. Wüschmann, and K. Gelbrich, 2009: Proenvironmental value orientation across cultures. *Social Psychology*, **40**, 222-233.
- Spence, A., W. Poortinga, and N. Pidgeon, 2012: The psychological distance of climate change. *Risk Analysis*, **32**, 957-972.

- Stafford Smith, M., L. Horrocks, A. Harvey, C. Hamilton, M.S. Smith, L. Horrocks, A. Harvey, and C. Hamilton, 2011:** Rethinking adaptation for a 4°C world. *Philosophical Transactions of the Royal Society A*, **369**, 196-216.
- Steel, P. and C.J. König, 2006:** Integrating theories of motivation. *Academy of Management Review*, **31**, 889-913.
- Sterman, J.D. and L.B. Sweeney, 2007:** Understanding public complacency about climate change: adults' mental models of climate change violate conservation of matter. *Climatic Change*, **80**, 213-238.
- Stern, N., 2008:** The economics of climate change – Richard T. Ely lecture. *American Economic Review: Papers & Proceedings*, **98**, 1-37.
- Stern, N.H. and Treasury of Great Britain, 2007:** *The Economics of Climate Change: The Stern Review*. Cambridge University Press, Cambridge, UK and New York, NY, USA, 692 pp.
- Stern, P.C. and T. Dietz, 1994:** The value basis of environmental concern. *Journal of Social Issues*, **50**, 65-84.
- Stewart, N. and K. Simpson, 2008:** A decision-by-sampling account of decision under risk. In: *The Probabilistic Mind: Prospects for Bayesian Cognitive Science* [Chater, N. and M. Oaksford (eds.)]. Oxford University Press, Oxford, UK, pp. 261-276.
- Stewart, N., N. Chater, and G.D. Brown, 2006:** Decision by sampling. *Cognitive Psychology*, **53**, 1-26.
- Strauss, S., 2009:** Global models, local risks: responding to climate change in the Swiss Alps. In: *Anthropology & Climate Change. From Encounters to Actions* [Crate, S.A. and M. Nuttall (eds.)]. Left Coast Press, Walnut Creek, CA, USA, pp. 166-174.
- Strauss, S. and B. Orlove, 2003:** Up in the air: the anthropology of weather and climate. In: *Weather, Climate and Culture* [Strauss, S. and B. Orlove (eds.)]. Berg, Oxford, UK and New York, NY, USA, pp. 3-14.
- Strohschneider, S. and D. Güss, 1999:** The fate of the Moros: a cross-cultural exploration of strategies in complex and dynamic decision making. *International Journal of Psychology*, **34**, 235-252.
- Sundblad, E.-L., A. Biel, and T. Gärling, 2009:** Knowledge and confidence in knowledge about climate change among experts, journalists, politicians, and laypersons. *Environment and Behavior*, **41**, 281-302.
- Swanson, D., H. Venema, S. Barg, S. Tyler, J. Drexage, P. Bhandari, and U. Kelkar, 2006:** Initial conceptual framework and literature review for understanding adaptive policies. In: *Designing Policies in a World of Uncertainty, Change, and Surprise: Adaptive Policy-Making for Agriculture and Water Resources in the Face of Climate Change* [Swanson, D. and U. Kelkar (eds.)]. International Institute for Sustainable Development (IISD), Winnipeg, Manitoba, Canada, and The Energy and Resources Institute (TERI), New Delhi, India, pp. 9-36.
- Swanson, D., S. Barg, S. Tyler, H. Venema, S. Tomar, S. Bhadwal, S. Nair, I. Roy and J. Drexage, 2012:** Seven tools for creating adaptive policies. *Technological Forecasting & Social Change*, **77**, 924-939.
- Swim, J., S. Clayton, T. Doherty, R. Gifford, G. Howard, J. Reser, P. Stern, and E. Weber, 2010:** *Psychology and Global Climate Change: Addressing a Multi-Faceted Phenomenon and Set of Challenges*. A Report by the American Psychological Association's Task Force on the Interface Between Psychology and Global Climate Change, American Psychological Association, Washington DC, USA, 108 pp.
- Swim, J.K., P.C. Stern, T.J. Doherty, S. Clayton, J.P. Reser, E.U. Weber, R. Gifford, and G.S. Howard, 2011:** Psychology's contributions to understanding and addressing global climate change. *American Psychologist*, **66**, 241-250.
- Thompson, A. and J. Bendik-Keymer, 2012:** *Ethical Adaptation to Climate Change: Human Virtues of the Future*. MIT Press, Cambridge, MA, USA, 344 pp.
- Thompson, P.B., 1986:** The philosophical foundations of risk. *Southern Journal of Philosophy*, **24**, 273-286.
- Tobler, C., V.H.M. Visschers, and M. Siegrist, 2012:** Addressing climate change: determinants of consumers' willingness to act and to support policy measures. *Journal of Environmental Psychology*, **32**, 197-207.
- Tompkins, E.L., R. Few, and K. Brown, 2008a:** Scenario-based stakeholder engagement: incorporating stakeholders preferences into coastal planning for climate change. *Journal of Environmental Management*, **88**, 1580-1592.
- Tompkins, E.L., M.C. Lemos, and E. Boyd, 2008b:** A less disastrous disaster: managing response to climate-driven hazards in the Cayman Islands and NE Brazil. *Global Environmental Change: Human and Policy Dimensions*, **18**, 736-745.
- Tschakert, P. and K.A. Dietrich, 2010:** Anticipatory learning for climate change adaptation and resilience. *Ecology and Society*, **15**(2), 11, www.ecologyandsociety.org/vol15/iss2/art11/.
- Tsosie, R., 2007:** Indigenous people and environmental justice: the impact of climate change. *University of Colorado Law Review*, **78**, 1625-1677.
- Turner, N.J. and H. Clifton, 2009:** "It's so different today": climate change and indigenous lifeways in British Columbia, Canada. *Global Environmental Change*, **19**, 180-190.
- Turnquist, M. and E. Vugrin, 2013:** Design for resilience in infrastructure distribution networks. *Environment Systems & Decisions*, **33**, 104-120.
- Tversky, A. and D. Kahneman, 1992:** Advances in prospect theory: cumulative representation of uncertainty. *Journal of Risk and Uncertainty*, **5**, 297-323.
- Tyler, S. and M. Moench, 2012:** A framework for urban climate resilience. *Climate and Development*, **4**, 311-326.
- Ulloa, A., 2011:** Construcciones culturales sobre el clima. In: *Perspectivas Culturales del Clima* [Ulloa, A. (ed.)]. Universidad Nacional de Colombia, Instituto Latinoamericano para una Sociedad y un Derechos Alternativos (ILSA), Bogotá, Colombia, pp. 33-54.
- UN, 1992:** *United Nations Framework Convention on Climate Change (UNFCCC)*. United Nations, Geneva, Switzerland, 33 pp.
- UNDP, 2005:** *Adaptation Policy Frameworks for Climate Change: Developing Strategies, Policies and Measures*. United Nations Development Programme (UNDP), Cambridge University Press, Cambridge, UK and New York, NY, USA, 268 pp.
- UNFCCC, 2009:** *Potential Costs and Benefits of Adaptation Options: A Review of Existing Literature*. Technical Paper 2009/2, United Nations Framework Convention on Climate Change (UNFCCC), Geneva, Switzerland, 80 pp.
- UNFCCC, 2012:** *NAPA Priorities Database*. United Nations Framework Convention on Climate Change (UNFCCC), Bonn, Germany, unfccc.int/cooperation_support/least_developed_countries_portal/napa_priorities_database/items/4583.php (accessed 28 Nov. 2012).
- UNFCCC, 2013:** *Report of the Conference of the Parties on Its Eighteenth Session, Held in Doha from 26 November to 8 December 2012. Addendum Part Two: Action Taken by the Conference of the Parties at Its Eighteenth Session*. United Nations Framework Convention on Climate Change (UNFCCC), United Nations, Geneva, Switzerland, 37 pp.
- UNISDR, 2007:** *Hyogo Framework for Action 2005-2015: Building the Resilience of Nations and Communities to Disasters*. United Nations International Strategy for Disaster Reduction (UNISDR) and United Nations Development Programme (UNDP), Geneva, Switzerland, 24 pp.
- UNISDR, 2011:** *Hyogo Framework for Action 2005-2015: Building the Resilience of Nations and Communities to Disasters. Mid-Term Review 2010-2011*. United Nations International Strategy for Disaster Reduction (UNISDR) and United Nations Development Programme (UNDP), Geneva, Switzerland, 107 pp.
- UNISDR, 2012:** *Making Cities Resilient Report 2012. My City Is Getting Ready! A Global Snapshot of How Local Governments Reduce Disaster Risk*. United Nations International Strategy for Disaster Reduction (UNISDR) and United Nations Development Programme (UNDP), Geneva, Switzerland, 112 pp.
- UNISDR and UNDP, 2012:** *Disaster Risk Reduction and Climate Change Adaptation in the Pacific: An Institutional and Policy Analysis*. United Nations International Strategy for Disaster Reduction (UNISDR) and United Nations Development Programme (UNDP), Suva, Fiji, 76 pp.
- van Asselt, M.B.A. and J. Rotmans, 2002:** Uncertainty in integrated assessment modelling – from positivism to pluralism. *Climatic Change*, **54**, 75-105.
- van Notten, P., 2006:** Scenario development: a typology of approaches. In: *Schooling for Tomorrow: Think Scenarios, Rethink Education*. OECD Publishing, Paris, France, pp. 66-92.
- van Ruijven, B.J., M.A. Levy, A. Agrawal, F. Biermann, J. Birkmann, T.R. Carter, K.L. Ebi, M. Garschagen, B. Jones, and R. Jones, 2013:** Enhancing the relevance of Shared Socioeconomic Pathways for climate change impacts, adaptation and vulnerability research. In: Special Issue of *Climatic Change: A Framework for the Development of New Socio-economic Scenarios for Climate Change Research* [Nakicenovic, N., R. Lempert, and A. Janetos, (eds.)]. 14 pp. (in press), doi:10.1007/s10584-013-0931-0.
- Varady, R.G., C.A. Scott, M. Wilder, B. Morehouse, N.P. Pablos, and G.M. Garfin, 2012:** Transboundary adaptive management to reduce climate-change vulnerability in the western U.S.-Mexico border region. *Environmental Science & Policy*, **26**, 102-112.
- Vedwan, N., 2006:** Culture, climate and the environment: local knowledge and perception of climate change among apple growers in northwestern India. *Journal of Ecological Anthropology*, **10**, 4-18.
- Verschuuren, J., 2013:** *Research Handbook on Climate Change Adaptation Law*. Edward Elgar Publishing, Cheltenham, UK and Northampton, MA, USA, 456 pp.

- Visbeck, M.**, 2008: From climate assessment to climate services. *Nature Geoscience*, **1**, 2-3.
- Vogel, C., S.C. Moser, R.E. Kasperson, and G.D. Dabelko**, 2007: Linking vulnerability, adaptation, and resilience science to practice: pathways, players, and partnerships. *Global Environmental Change: Human and Policy Dimensions*, **17**, 349-364.
- von Storch, H., I. Meinke, N. Stehr, B. Ratter, W. Krauss, R.A. Pielke Jr, R. Grundmann, M. Reckermann, and R. Weisse**, 2011: Regional climate services: illustrated with experiences from Northern Europe. *Zeitschrift für Umweltpolitik & Umweltrecht*, **34(1)**, 1-15.
- Vugrin, E.D., D.E. Warren, and M.A. Ehlen**, 2011: A resilience assessment framework for infrastructure and economic systems: quantitative and qualitative resilience analysis of petrochemical supply chains to a hurricane. *Process Safety Progress*, **30**, 280-290.
- Walker, W.E., S.A. Rahman and J. Cave**, 2001: Adaptive policies, policy analysis, and policy-making. *European Journal of Operational Research*, **128**, 282-289.
- Walker, W.E., P. Harremoës, J. Rotmans, J.P. van der Sluijs, M.B.A. van Asselt, P. Janssen, and M.P.K. von Krauss**, 2003: Defining uncertainty: a conceptual basis for uncertainty management in model-based decision support. *Integrated Assessment*, **4**, 5-17.
- Webb, R. and J.-I. Beh**, 2013: *Leading Adaptation Practices and Support Strategies for Australia: An International and Australian Review of Products and Tools*. National Climate Change Adaptation Research Facility (NCCARF), Gold Coast, Australia, 106 pp.
- Weichselgartner, J.**, 2001: Disaster mitigation: the concept of vulnerability revisited. *Disaster Prevention and Management*, **10**, 85-95.
- Westerhoff, L. and J. Robinson**, 2013: *The Meaning(s) of Climate Change: Exploring Narrative and Social Practice in the Quest for Transformation*. IRES Working Paper Series, No. 2013-01, Institute for Resources, the Environment and Sustainability, Vancouver, BC, Canada, 20 pp.
- White, D.D., A. Wutich, K.L. Larson, P. Gober, T. Lant, and C. Senneville**, 2010: Credibility, salience, and legitimacy of boundary objects: water managers' assessment of a simulation model in an immersive decision theater. *Science and Public Policy*, **37**, 219-232.
- WHO**, 2008: *Heat-Health Action Plans*. World Health Organization (WHO), Geneva, Switzerland, 58 pp.
- Wijewardana, D.**, 2008: Criteria and indicators for sustainable forest management: the road travelled and the way ahead. *Ecological Indicators*, **8**, 115-122.
- Wilby, R.L. and S. Dessai**, 2010: Robust adaptation to climate change. *Weather*, **65**, 180-185.
- Wilby, R.L. and I. Harris**, 2006: A framework for assessing uncertainties in climate change impacts: low-flow scenarios for the River Thames, UK. *Water Resources Research*, **42(2)**, W02419, doi:10.1029/2005WR004065.
- Wilkinson, A. and E. Eidinow**, 2008: Evolving practices in environmental scenarios: a new scenario typology. *Environmental Research Letters*, **3**, 045017, doi:10.1088/1748-9326/3/4/045017.
- Willows, R. and R. Connell**, 2003: *Climate Adaptation: Risk, Uncertainty, and Decision-making*. UKCIP Technical Report, UK Climate Impacts Programme (UKCIP), Oxford, UK, 154 pp.
- Wilson, C. and T. McDaniels**, 2007: Structured decision-making to link climate change and sustainable development. *Climate Policy*, **7**, 353-370.
- WMO**, 2011: *Climate Knowledge for Action: A Global Framework for Climate Services – Empowering the Most Vulnerable*. Report No. 1065, World Meteorological Organization (WMO), Geneva, Switzerland, 248 pp.
- Wolf, J., I. Allice, and T. Bell**, 2012: Values, climate change, and implications for adaptation: evidence from two communities in Labrador, Canada. *Global Environmental Change*, **28**, 548-562.
- Woods, R., A. Fernández, and S. Coen**, 2012: The use of religious metaphors by UK newspapers to describe and denigrate climate change. *Public Understanding of Science*, **21**, 323-339.
- World Resources Institute, UNDP, UNEP, and World Bank**, 2011: *World Resources 2010–2011: Decision Making in a Changing Climate – Adaptation Challenges and Choices*. World Resources Institute (WRI), Washington, DC, USA, 172 pp.
- Worthington, S.A. and T. Pipa**, 2010: International NGOs and foundations: essential partners in creating an effective architecture for aid. In: *Making Development Aid More Effective. The 2010 Brookings Blum Roundtable Policy Briefs*. Brookings Institute, New York, NY, USA, pp. 28-36.
- Wright, C. and D. Nyberg**, 2012: Working with passion: emotionology, corporate environmentalism and climate change. *Human Relations*, **65**, 1561-1587.
- WUCA**, 2010: *Decision Support Planning Methods: Incorporating Climate Change Uncertainties into Water Planning*. Water Utility Climate Alliance (WUCA), San Francisco, CA, USA, 102 pp.
- Wynne, B.**, 2002: Risk and environment as legitimacy discourses of technology: reflexivity inside out? *Current Sociology*, **50**, 459-477.
- Xiao, C. and R.E. Dunlap**, 2007: Validating a comprehensive model of environmental concern cross-nationally: a U.S.-Canadian comparison. *Social Science Quarterly*, **88**, 471-493.
- Yearley, S.**, 2009: Sociology and climate change after Kyoto: what roles for social science in understanding climate change? *Current Sociology*, **57**, 389-405.
- Yohe, G.W., R.D. Lasco, Q.K. Ahmad, N.W. Arnell, S.J. Cohen, C. Hope, A.C. Janetos, and R.T. Perez**, 2007: Perspectives on climate change and sustainability. In: *Climate Change 2007: Impacts, Adaptation and Vulnerability. Contribution of Working Group II to the Fourth Assessment Report of the Intergovernmental Panel on Climate Change* [Parry, M.L., O.F. Canziani, J.P. Palutikof, P.J.v.d. Linden, and C.E. Hanson (eds.)]. Cambridge University Press, Cambridge, UK and New York, NY, USA, pp. 811-841.
- Young, C.K.**, 2013: The problem-solution adaptation implementation framework summary. In: *Valuing Adaptation under Rapid Change* [Jones, R.N., C.K. Young, J. Handmer, A. Keating, G.D. Mekala, and P. Sheehan (eds.)]. National Climate Change Adaptation Research Facility (NCCARF), Gold Coast, Australia, pp. 152-156.
- Young, O.R., L.A. King, and H. Schroeder**, 2008: *Institutions and Environmental Change: Principal Findings, Applications, and Research Frontiers*. MIT Press, Cambridge, MA, USA, 373 pp.
- Zhou, S., A.D. Smith, A.E. Punt, A.J. Richardson, M. Gibbs, E.A. Fulton, S. Pascoe, C. Bulman, P. Bayliss, and K. Sainsbury**, 2010: Ecosystem-based fisheries management requires a change to the selective fishing philosophy. *Proceedings of the National Academy of Sciences of the United States of America*, **107**, 9485-9489.
- Ziervogel, G. and F. Zermoglio**, 2009: Climate change scenarios and the development of adaptation strategies in Africa: challenges and opportunities. *Climate Research*, **40**, 133-146.