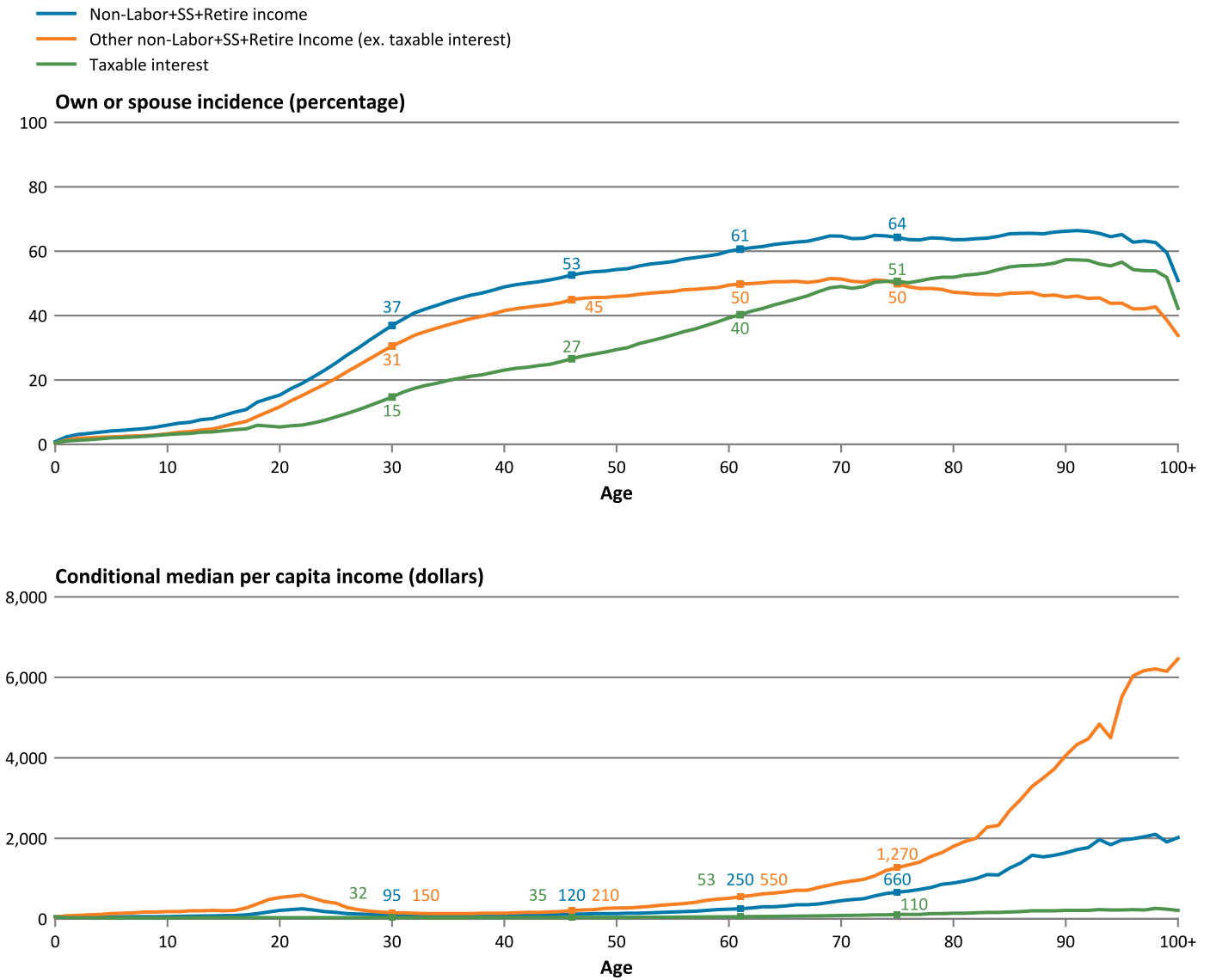


Figure S1

### Incidence and Conditional Median Non-Labor+SS+Retire Income

Incidence and conditional median income by age, 2016



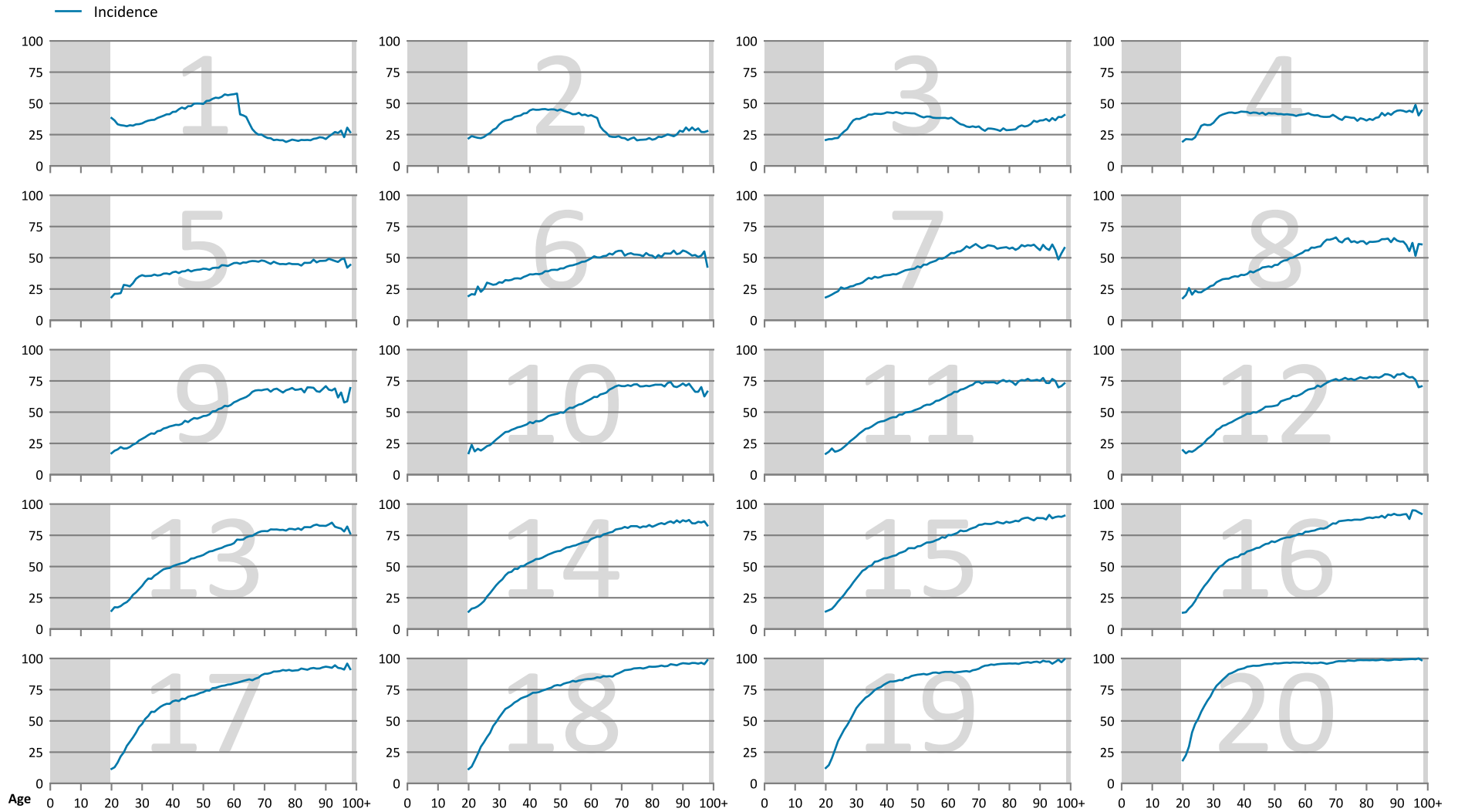
Note: Values are labeled at ages 30, 46, 61, and 75. Non-Labor+SS+Retire income includes all income from sources other than labor, Social Security, or retirement (including taxable interest, tax-exempt interest, dividends, gains/losses, rents, royalties and income from partnerships and S-corporations).

Source: Authors' tabulation of IRS data

Figure S2

### Non-Labor+SS+Retire Income Incidence

Incidence of per capita non-Labor+SS+Retire income by age and income ventile,\* 2016 (percent)



\*For a description of the income ventiles, see the note on Figure 6 in the main paper.

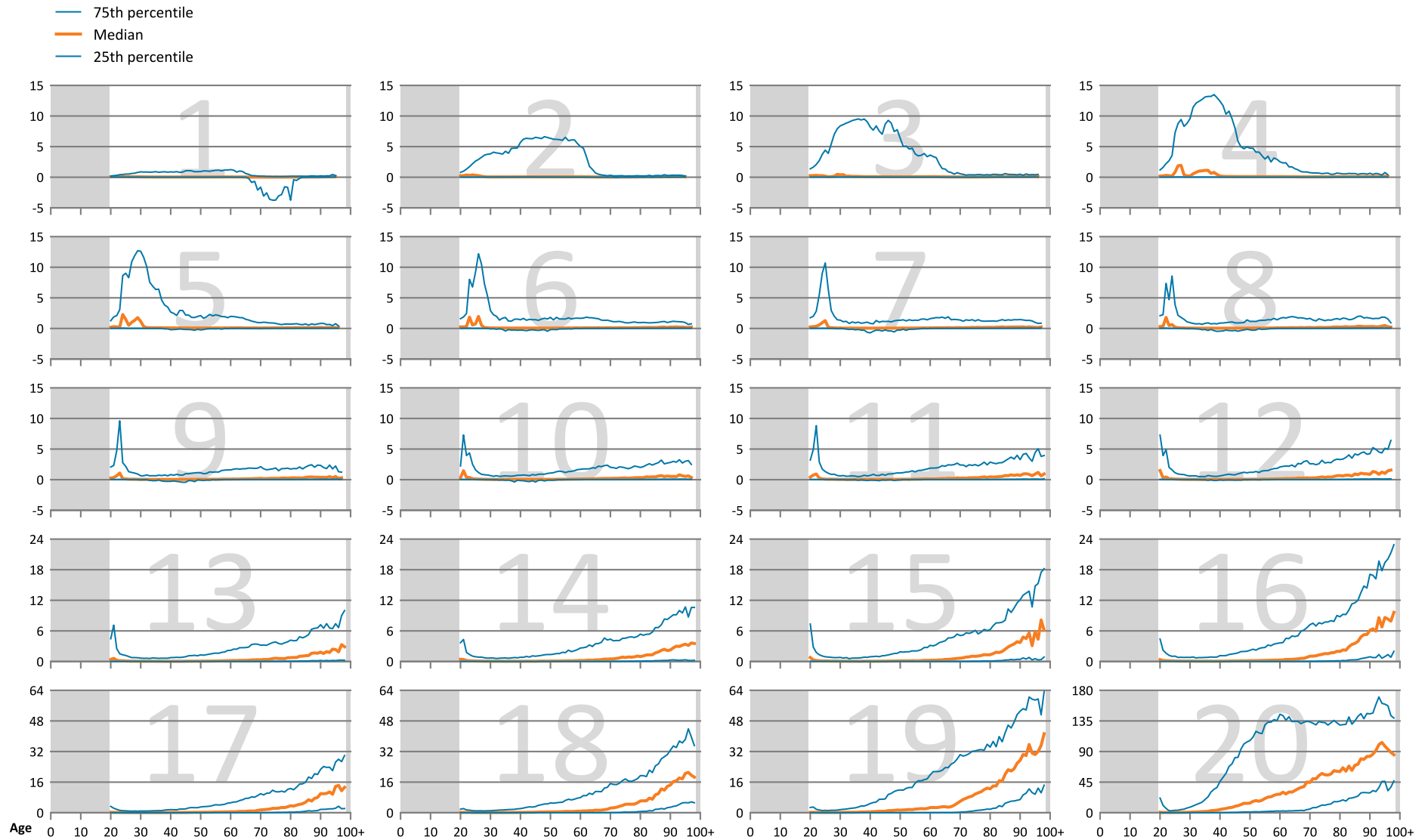
Note: For a description of non-Labor+SS+Retire income, see the note on Figure S1.

Source: Authors' tabulation of IRS data

Figure S3

### Non-Labor+SS+Retire Income

Conditional per capita non-Labor+SS+Retire income\* by age† and income ventile,‡ 2016 (thousands of dollars)



\*Medians and percentiles are among individuals with non-Labor+SS+Retire income.

†Because of sample size limitations, this chart presents data from age 20 to age 98. Medians and percentiles are not available for all ventiles in the age range.

‡For a description of the income ventiles, see the note on Figure 6 in the main paper.

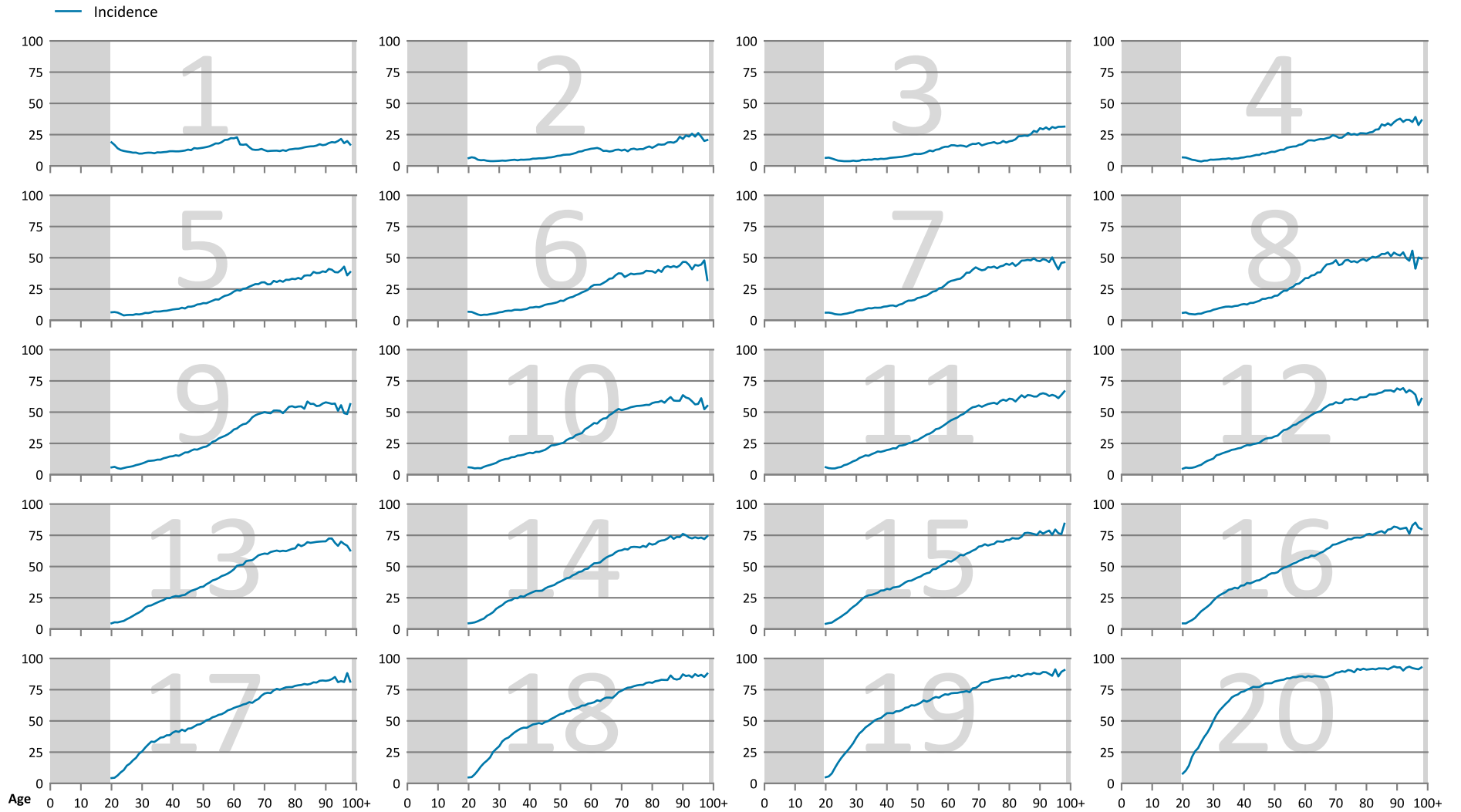
Note: For a description of non-Labor+SS+Retire income, see the note on Figure S1.

Source: Authors' tabulation of IRS data

Figure S4

### Taxable Interest Income Incidence

Incidence of per capita taxable interest income by age and income ventile,\* 2016 (percent)



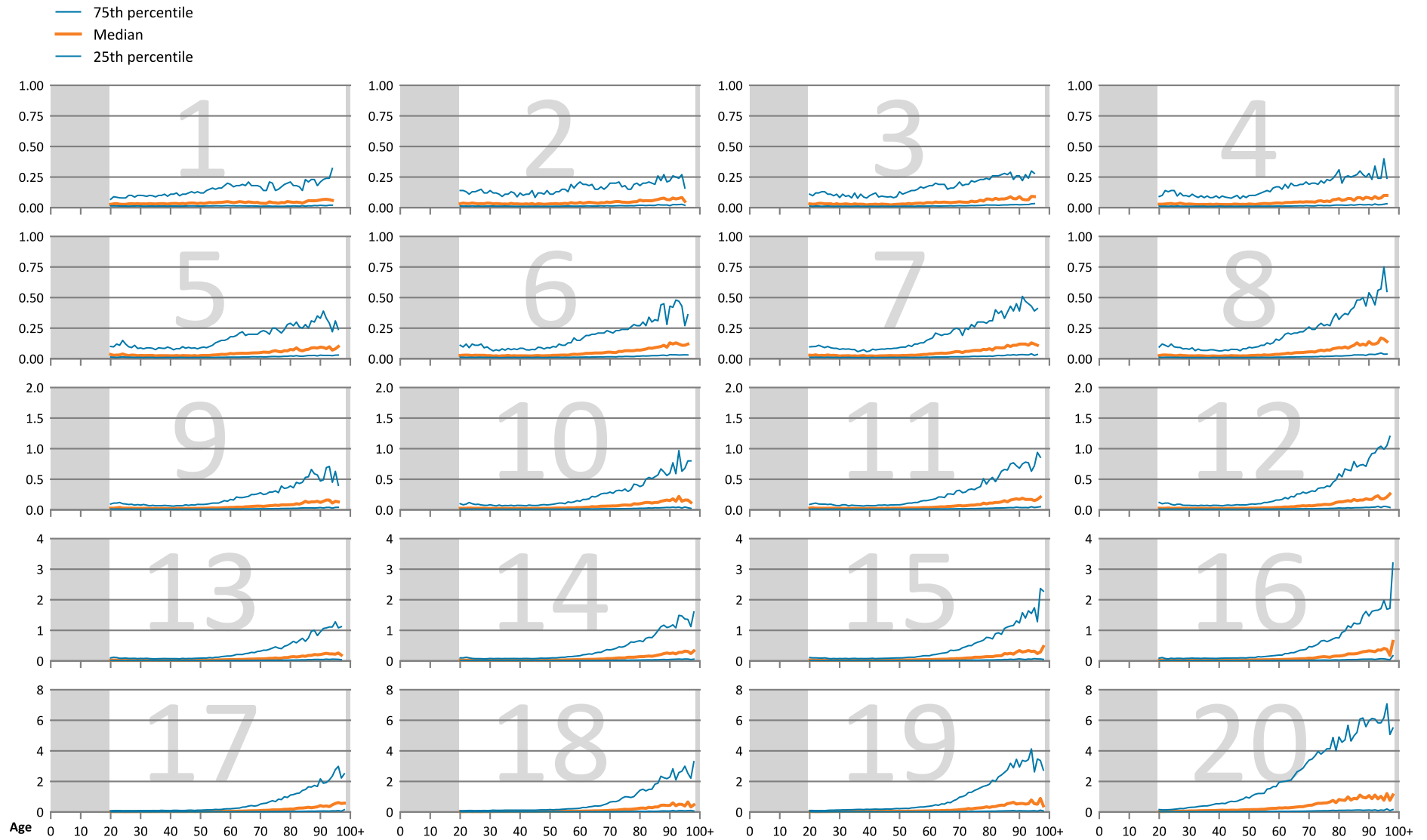
\*For a description of the income ventiles, see the note on Figure 6 in the main paper.

Source: Authors' tabulation of IRS data

Figure S5

### Taxable Interest Income

Conditional per capita taxable interest income\* by age† and income ventile‡, 2016 (thousands of dollars)



\*Medians and percentiles are among individuals with taxable interest income.

†Because of sample size limitations, this chart presents data from age 20 to age 98. Medians and percentiles are not available for all ventiles in the age range.

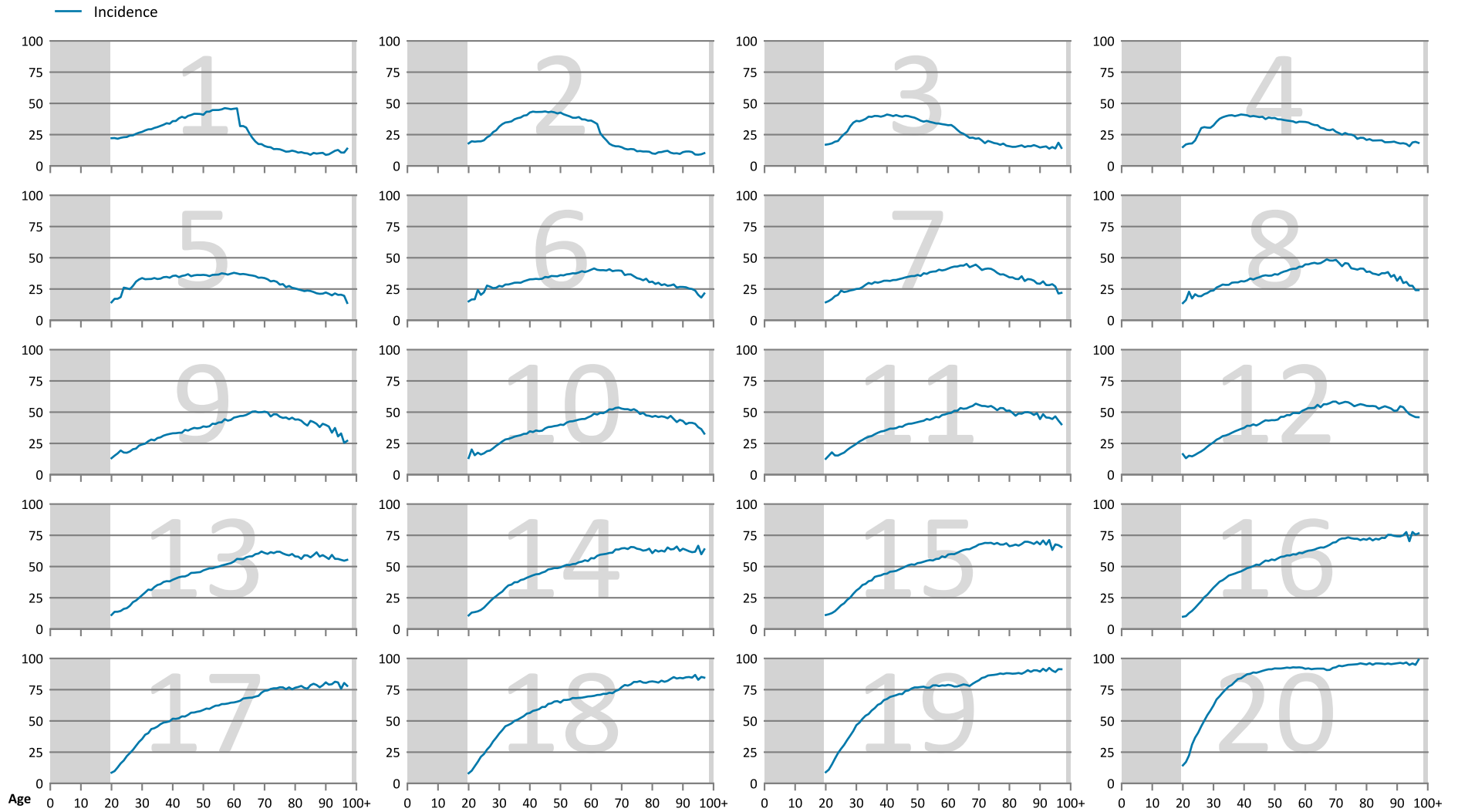
‡For a description of the income ventiles, see the note on Figure 6 in the main paper.

Source: Authors' tabulation of IRS data

Figure S6

**Other Non-Labor+SS+Retire (ex. Taxable Interest) Income Incidence**

Incidence of per capita other non-Labor+SS+Retire (ex. taxable interest) income by age and income ventile,\* 2016 (percent)



\*For a description of the income ventiles, see the note on Figure 6 in the main paper.

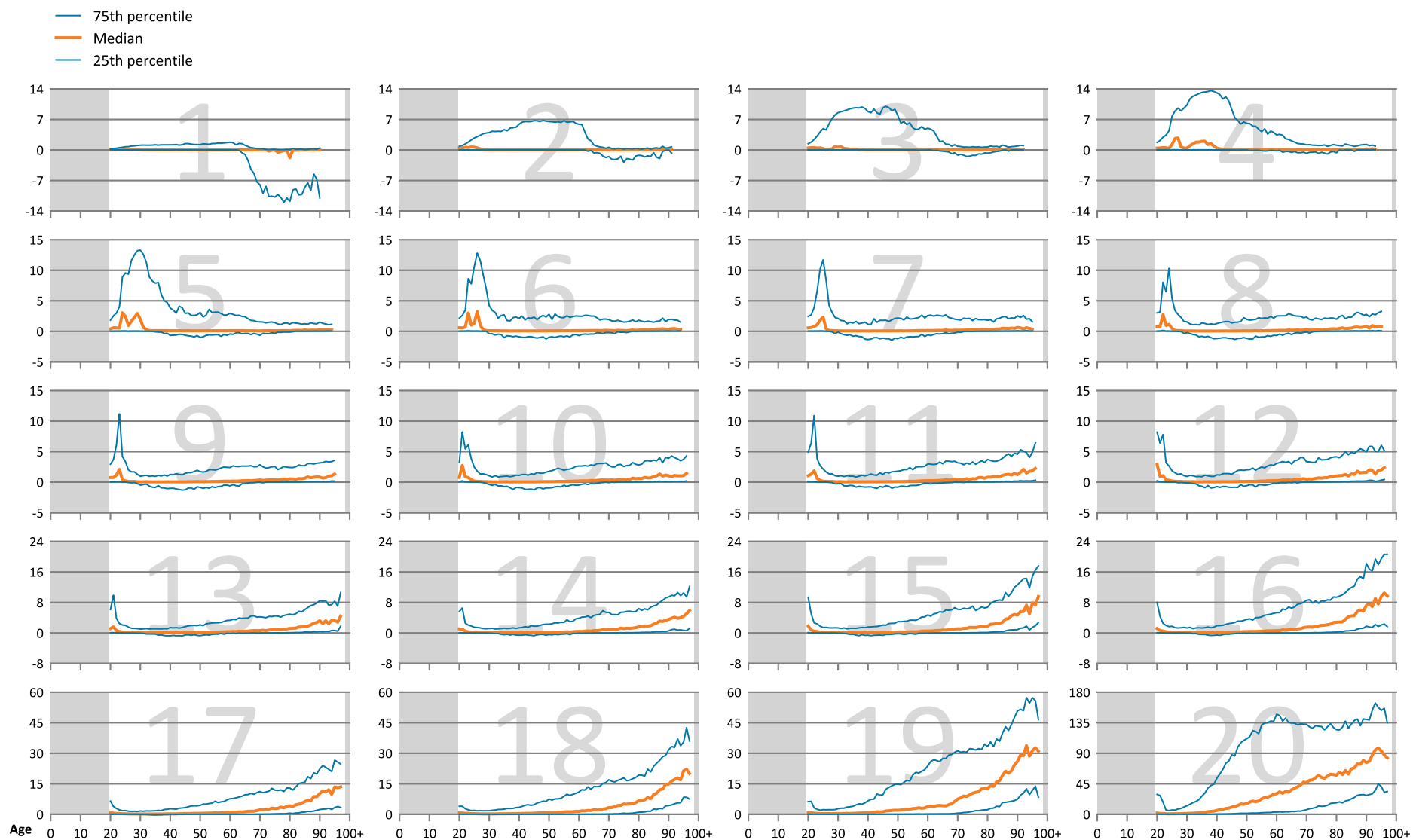
Note: For a description of non-Labor+SS+Retire income, see the note on Figure S1.

Source: Authors' tabulation of IRS data

Figure S7

### Other Non-Labor+SS+Retire (ex. Taxable Interest) Income

Conditional per capita other non-Labor+SS+Retire (ex. taxable interest) income\* by age† and income ventile,‡ 2016 (thousands of dollars)



\*Medians and percentiles are among individuals with other non-Labor+SS+Retire (ex. taxable interest) income.

†Because of sample size limitations, this chart presents data from age 20 to age 98. Medians and percentiles are not available for all ventiles in the age range.

‡For a description of the income ventiles, see the note on Figure 6 in the main paper.

Note: For a description of non-Labor+SS+Retire income, see the note on Figure S1.

Source: Authors' tabulation of IRS data