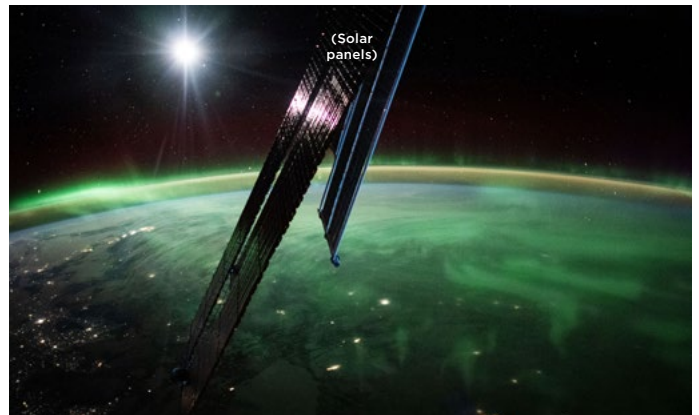


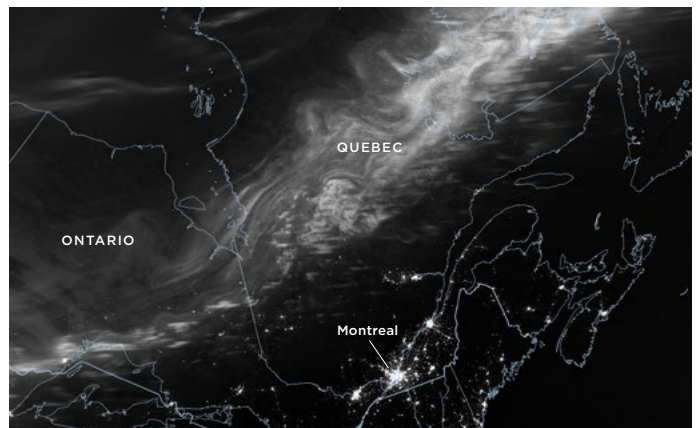
Joint Polar Satellite System Aurora Art!



Aurora borealis over a forest and mountains at night.



Aurora borealis from space with solar panels visible. February 27, 2023. L



Aurora borealis over a map of Ontario and Quebec. NPP. February 28, 2023. L

NOAA and NASA are proud to announce the release of the first Joint Polar Satellite System (JPSS) satellite, NOAA-20, into orbit. This satellite is the first of a new generation of polar-orbiting satellites that will provide improved weather forecasting and climate monitoring capabilities.

The JPSS program is a joint effort between NOAA and NASA. NOAA is responsible for the satellite's operation and data distribution, while NASA is responsible for the satellite's development and launch. The JPSS program is a key component of the National Oceanic and Atmospheric Administration's (NOAA) Earth System Data Interchange Center (ESDICC) and the National Aeronautics and Space Administration's (NASA) Earth Observing System (EOS).

The JPSS program is a key component of the National Oceanic and Atmospheric Administration's (NOAA) Earth System Data Interchange Center (ESDICC) and the National Aeronautics and Space Administration's (NASA) Earth Observing System (EOS). The JPSS program is a key component of the National Oceanic and Atmospheric Administration's (NOAA) Earth System Data Interchange Center (ESDICC) and the National Aeronautics and Space Administration's (NASA) Earth Observing System (EOS).

The JPSS program is a key component of the National Oceanic and Atmospheric Administration's (NOAA) Earth System Data Interchange Center (ESDICC) and the National Aeronautics and Space Administration's (NASA) Earth Observing System (EOS). The JPSS program is a key component of the National Oceanic and Atmospheric Administration's (NOAA) Earth System Data Interchange Center (ESDICC) and the National Aeronautics and Space Administration's (NASA) Earth Observing System (EOS).

How does the aurora borealis happen?

The aurora borealis is a natural light display in the Earth's sky, predominantly seen in the high-latitude regions (around the Arctic and Antarctic). It is caused by the interaction of the Earth's magnetic field with charged particles from the solar wind. These particles are accelerated towards the poles, where they collide with atmospheric gases, causing them to emit light.



JOINT POLAR SATELLITE SYSTEM (JPSS)

NOAA and NASA are proud to announce the release of the first Joint Polar Satellite System (JPSS) satellite, NOAA-20, into orbit. This satellite is the first of a new generation of polar-orbiting satellites that will provide improved weather forecasting and climate monitoring capabilities.

www.noaa.gov/jpss

Facebook: NOAA/JPS

X: JP

Objectives

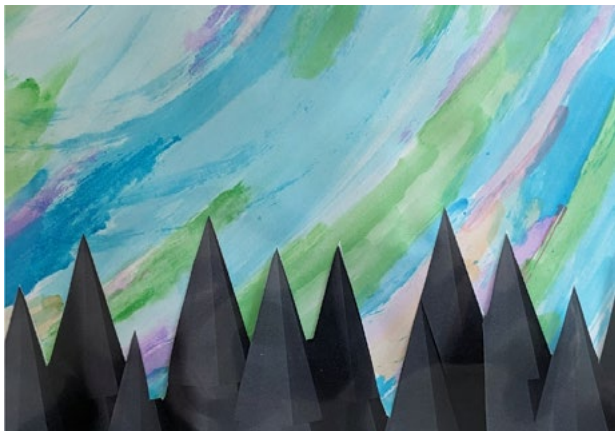
By the end of this lesson, students will be able to:

- Identify the colors of the aurora borealis.
- Create a colorful aurora borealis using watercolors or tissue paper.
- Use black paper to create a silhouette of a mountain range.

Craft a Colorful Aurora with Watercolors

You will need

- Watercolor paper
 - Paintbrushes
 - Water
 - Black paper
 - Glue
1. Lay out a sheet of watercolor paper. Use a paintbrush to create a background of soft, blended colors (blue, green, purple, pink) to represent the aurora borealis.
 2. Cut out a piece of black paper. Use a sharp object to create a series of pointed peaks, representing a mountain range.
 3. Glue the black paper peaks onto the bottom edge of the watercolor paper.



Create a Colorful Tissue Paper Aurora

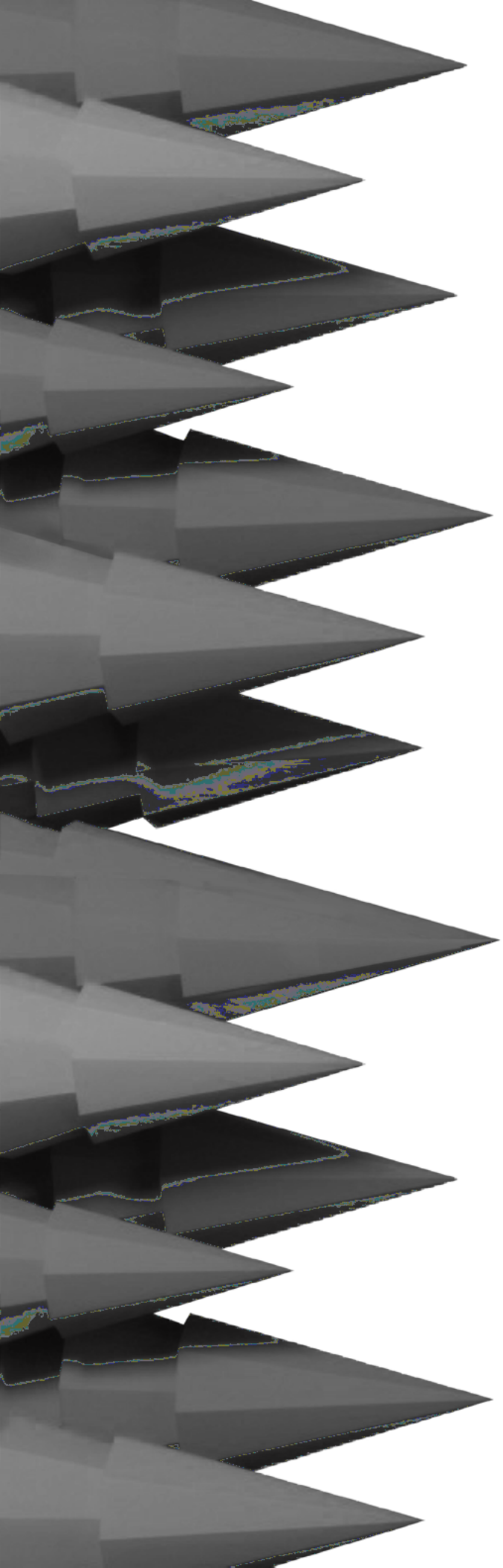
You will need

- Tissue paper
 - Paintbrushes
 - Water
 - Black paper
 - Glue
1. Lay out a sheet of tissue paper. Use a paintbrush to create a background of soft, blended colors (blue, green, purple, pink) to represent the aurora borealis.
 2. Cut out a piece of black paper. Use a sharp object to create a series of pointed peaks, representing a mountain range. *Tip: Don't forget to cut out a small piece of black paper for the sky.*
 3. Glue the black paper peaks onto the bottom edge of the tissue paper.



Other Aurora Art Ideas:

- Create a colorful aurora borealis using watercolor paper and black paper.
- Create a colorful aurora borealis using tissue paper and black paper.
- Create a colorful aurora borealis using watercolor paper and black paper.
- Create a colorful aurora borealis using tissue paper and black paper.
- Create a colorful aurora borealis using watercolor paper and black paper.



Geometric Landscapes: Mountains, Forests, and Nature

