



Ohio Data Submission Dispenser Guide



Ohio Prescription Drug Monitoring Program

October 2017 Version 1.4

Effective October 2017

Table of Contents

1 Data Collection and Tracking.....	4
Data Collection Overview	4
Data Collection Requirements.....	4
Reporting Requirements.....	5
Exemptions.....	5
2 Data Submission.....	6
Timeline and Requirements.....	6
Upload Specifications.....	6
3 Creating Your Account	6
4 Data Delivery Methods	9
4.1 Secure FTP.....	9
4.2 Web Portal Upload	9
4.3 Manual Entry (UCF)	10
4.4 Zero Reports.....	11
5 Data Compliance	11
5.1 File Listing	11
5.2 Claim Forms Listing.....	12
5.3 View Records	12
5.4 Error Correction	12
6 Email Reports.....	14
6.1 File Failed Report.....	14
6.2 File Status Report	15
6.3 Zero Report Confirmation	17
7 Password Management.....	18
7.1 Changing Your Password.....	18
7.2 Changing Passwords for Another User	18
7.3Forgot Your Password.....	19
8 User Profile.....	19
8.1. Adding Users to Your Account	19
8.2. Adding States to Your Account.....	19
8.3.Adding sFTP to a Registered Account	20
9 Document Information	21
Disclaimer	21
Revision History.....	21
10 Assistance and Support	21

Technical Assistance	21
Administrative Assistance	21
11 Appendix A – ASAP 4.2A Specifications.....	22
12 Appendix B – ASAP Zero Report Specifications	37
13 Appendix C – sFTP Configuration.....	39
State Subfolders.....	39
Public (SSH/RSA) Key Authentication.....	41

1 Data Collection and Tracking

Data Collection Overview

The Ohio Legislature passed legislation, which allows the State of Ohio Board of Pharmacy (SOBP) to develop its Prescription Monitoring Program (PMP) called the Ohio Automated Rx Reporting System (OARRS). (See ORC 4729.75 – 4729.84) The legislation became law on May 18, 2005, and the rules needed to implement the law became effective on January 1, 2006. The text of the law is available in the Drug Laws of Ohio. The rules are available on our website at www.pharmacy.ohio.gov. Click on “Laws & Rules,” then on “Administrative Code Rules,” and scroll down to “Chapter 4729-37 Drug Database.”

The SOBP manages the collection of required data from all reportable drugs (and other dangerous drugs established by rule) prescriptions submitted electronically by pharmacies, dispensing prescribers, and wholesalers.

This document applies to all outpatient dispensing by pharmacies and prescribers who are personally furnishing medications (i.e. acting as the “pharmacy”) for their own patients.

Data Collection Requirements

Every in-state pharmacy and dispensing prescriber shall report all out-patient dispensing of any reportable medication regardless of the state in which the patient lives.

Every out-of-state pharmacy that holds an Ohio Terminal Distributor of Dangerous Drugs license shall report all outpatient dispensing of any reportable medication product to an Ohio resident.

Sales of reportable drugs at wholesale to a prescriber or a pharmacy must also be reported, but should not be included in the reports of outpatient prescriptions. For information regarding reporting wholesale transactions, please refer to the Ohio Data Submission Wholesaler Guide.

“Outpatient” is defined as any person who receives drugs for use outside of an institutional facility (OAC 4729-17-01 (G)).

All dispensers of reportable drugs must meet the reporting requirements set forth by state law in a secure methodology and format. Information about reportable drugs dispensing activities must be reported on regular intervals to the Ohio PMP through the authorized data collection vendor, Appriss, Inc.

Reporting Requirements

Effective March 15, 2017, the OHIO PMP will begin requiring pharmacies and dispensers to report reportable drugs dispensations to the SOBP via the PMP Clearinghouse. Dispensations must be reported no later than 24 hours, after dispensing the prescription, although they may be submitted more frequently.

The laws and regulations for reporting to the OHIO PMP are continuously subjected to amendments. It is the responsibility of dispensers to be aware of such updates as they are enacted and promulgated.

All dispensers of reportable drugs are required to collect and report their dispensing information. Such reporting without individual authorization by the patient is allowed under HIPAA, 45CFR § 164.512, paragraphs (a) and (d). OHIO PMP is the state oversight agency and Appriss will be acting as an agent of the OHIO PMP in the collection of this information.

The following elements are required by law to be reported. For additional details on these elements and others of ASAP 4.2A please see [Appendix A – ASAP 4.2A Specifications](#).

Exemptions

Pharmacies which attest to NEVER dispensing reportable drugs (e.g. pharmacies that only dispense respiratory drugs or diabetes drugs, etc.) on their license renewal will be considered exempt from reporting to OARRS. Should a change in business practices cause a reporting pharmacy to be qualified for an exemption outside of a license renewal period, the pharmacy may request an exemption in writing. Should a change in business practices cause an exempt pharmacy to begin dispensing reportable drugs, the pharmacy must begin reporting to OARRS immediately.

2 Data Submission

This chapter provides information and instructions for submitting data to the PMP Clearinghouse repository.

Timeline and Requirements

Pharmacies and software vendors can establish submission accounts upon receipt of this guide. Instructions for setting up an account are listed below.

- You may create your account on or after January 31, 2017. See [Creating Your Account](#) for more information.
- Beginning March 15, 2017, dispensers are required to transmit their data using PMP Clearinghouse. In accordance with the guidelines outlined under [Reporting Requirements](#).
- If a pharmacy does not dispense any reportable drugs for the preceding reporting period, it must file a zero report for that reporting period or it will be considered noncompliant. See [Zero Reports](#) for additional details.

Upload Specifications

Files should be in ASAP 4.2A format released in September 2011. Files for upload should be named in a unique fashion, with a prefix constructed from the date (YYYYMMDD) and a suffix of “.dat”. An example file name would be “20110415.dat”. All of your upload files will be kept separate from the files of others.

Reports for multiple pharmacies can be in the same upload file in any order.

3 Creating Your Account

Prior to submitting data, you must create an account. If you are already registered with PMP Clearinghouse, you do not need to create a new account. A single account can submit to multiple states. If you have an existing PMP Clearinghouse account, see section [8.2 Adding States to Your Account](#).

Note: Multiple pharmacies can be uploaded in the same file. For example, Wal-Mart, CVS, and other chain pharmacies send in one file containing all their pharmacies from around the state. Therefore, chains with multiple stores only have to set up one account to upload a file.

Perform the following steps to create an account:

1. To request a data submitter account for PMP AWARD_{XE}, the user must go to <https://pmpclearinghouse.net> and click the Create Account link in the center of the screen or go directly to <https://pmpclearinghouse.net/registrations/new>

2. The screen displayed requires the user to enter their current, valid email address and a password. This email address will act as your user name when logging into the system.
 - The password must contain at least 8 characters, including 1 capital letter, 1 lower case letter, and 1 special character (such as !, @, #, \$)

Profile

* Email Address

* Password

* Password confirmation

3. The second grouping is the demographics section. Here the user must enter their name, employer information, and other information as configured by the PMP Administrator.
 - Required fields are marked with a red asterisk (*)
 - The user may be able to auto populate their user and employer information using the search boxes for listed identifiers (DEA, NCPDP, or NPI).

Personal

* First name

Middle name

* Last name

Searching for DEA or NPI will autopopulate your information if found.

DEA

NPI

Employer

* Name

* Address

Address (continued)

* City

* State

* Postal Code

* Phone

Fax

Searching for DEA or NPI will autopopulate your information if found.

DEA

NCPDP

NOTE: PMP Clearinghouse users are able to submit data through the web portal via manual entry (UCF) or upload of ASAP files. Secure FTP (sFTP) access is also available for users who prefer an encrypted transfer method. If Secure FTP access is not required, skip to step 6.

sFTP Account Creation

If the user would like to submit data via sFTP, sFTP access can be granted during account registration. See [Adding sFTP to a Registered Account](#) to add sFTP access to an existing PMP Clearinghouse account

4. Check the “Enable sFTP Access” box as seen below. The sFTP username is automatically Generated using the first 5 characters of the employer name + the employer phone number + @prodpmpsftp. Example username: chain502555555@prodpmpsftp
5. Create a sFTP password that meets the following criteria: contain at least 8 characters, including 1 capital letter, 1 lower case letter, 1 number, and 1 special character (such as !, @, #, \$)

NOTE: This will be the password that is input into the pharmacy software so that submissions can be automated. This password can be the same as the one used entered previously under Profile. Unlike the Profile password (i.e. user account password) the sFTP password does not expire.

PMP Clearinghouse users are able to submit data through the web portal via manual entry or upload of ASAP files. Secure FTP (SFTP) access and Real-Time submissions are also available.

Enable SFTP Access

SFTP Username

SFTP Password

SFTP Password Confirmation

Password must include at least 8 characters, including 1 capital letter, 1 lowercase letter, and 1 special character (such as !, @, #, \$)

The URL to connect via sFTP is `sftp://sftp.pmpclearinghouse.net`

Additional details on sFTP configuration can be found in [Appendix C – sFTP Configuration](#).

6. The registering user must select which states they will be submitting data for. A list of available states using PMP AWA_RX_E are selectable.

Please indicate which states should receive your data.

* States

- Alaska
- Idaho
- Kansas
- Massachusetts
- Mississippi

7. The registering user clicks submit. The request is submitted to the PMP Administrator for each of the states the user selected for data submission.
- Once the State PMP Administrator has approved the request, the user will receive a welcome email and can begin submitting data to PMP AWA_RX_E.

4 Data Delivery Methods

This section discusses the different options available to a user to submit your reportable drugs reporting data file(s) to PMP Clearinghouse. Users have the options of:

- using a sFTP account;
- using a web portal upload page;
- using a manual entry UCF (Universal Claims Form) page; or submitting a zero report.

4.1 Secure FTP

Data submitters who select to submit data to PMP Clearinghouse by sFTP must configure individual folders for the state PMP systems they will be submitting data to. The sub-folders should use state abbreviation for naming (ex. OH, AK, KS, GA, etc.). The subfolder must be located in the homedir/ directory which is where you land once authenticated. Data files not submitted to a state subfolder will be required to have a manual state PMP assignment made on the File Listings screen. See [State Subfolders](#) for additional details on this process.

1. If a Clearinghouse account has not yet been created, perform the steps in [Creating Your Account](#). If a Clearinghouse account already exists, but needs sFTP access added perform the steps in [Adding sFTP to a Registered Account](#).
2. Prepare the data file(s) for submission, using the ASAP 4.2A specifications described in [Appendix A](#).
3. sFTP the file to sftp://sftp.pmpclearinghouse.net.
4. When prompted, use the username and password you entered when setting up the SFTP account.
5. Place the file in the appropriate state abbreviated directory.
6. The user can view the results of the transfer/upload on the Submissions screen.

Note: If a data file was placed in the root directory and not a state sub-folder, the user will be prompted in the form of a “**Determine PMP**” error at the File Status screen to select a destination PMP (state) to send the data to.

4.2 Web Portal Upload

1. If an account has not yet been created, perform the steps in [Creating Your Account](#).
2. After logging into PMP Clearinghouse, navigate to File Upload in the menu bar.
3. You must select a destination PMP from the available states listed in the drop-down.
4. Click on the “Browse” button and select the file to upload.
5. Click the ‘Upload’ button to begin the process of transferring the file to PMP Clearinghouse.
6. The results of the transfer/upload can be viewed on the File Submissions screen.

Use this screen to submit files to the PMP System

How to Upload Your Files

1. Click the "Browse" button to select a file on your local computer
2. Click the "Upload" button to begin the uploading process.
3. A confirmation message appears when the upload is finished.

Select PMP

File Upload:

4.3 Manual Entry (UCF)

Manual Entry is an option for data submitters to enter their prescription information into the PMP Clearinghouse system using a form derived from the Universal Claims Form. It allows the entry of patient, prescriber, dispenser, and prescription information.

PMP Clearinghouse | File Submissions | UCF Submissions | Zero Reports | File Upload | Account | My Profile | Help

UCF Listings | Manage Claim Forms | New Claim Form

Create Universal Claim Form MANAGE APPRIS, INC. UCF FORMS

PMP

* Pmp

Patient

Patient Info	Patient ID	Patient Address
* First Name <input type="text"/>	Identity Type <input type="text"/>	* Address <input type="text"/>
* Last Name <input type="text"/>	Identity Value <input type="text"/>	Apartment or Suite <input type="text"/>
* Date of Birth <input type="text" value="mm/dd/yyyy"/>	Jurisdiction <input type="text"/>	* City <input type="text"/>
Gender <input type="text"/>	Relationship <input type="text"/>	* State/Province <input type="text"/>
Phone Number <input type="text"/>		* Postal Code <input type="text"/>

Pharmacy

* Name <input type="text"/>	* Address <input type="text"/>
Phone Number <input type="text"/>	* City <input type="text"/>
* Identifier Value <input type="text"/>	* State <input type="text"/>
	* Postal Code <input type="text"/>

1. If you do not have an account, perform the steps in [Creating Your Account](#).
2. After logging into PMP Clearinghouse, navigate to UCF Submissions in the menu bar.
3. Choose New Claim Form to begin a submission.
4. You must select a destination PMP from the available states listed in the drop-down.
5. Complete all required fields as indicated by a red asterisks (*).
6. Click Save.
7. Then click Submit.
8. The results can be viewed on the UCF Listing screen.

4.4 Zero Reports

If you have no dispensations to report, you must report this information to the OH PDMP by performing the following steps:

1. If you do not have an account, perform the steps in [Creating Your Account](#).
2. After logging into PMP Clearinghouse, navigate to Zero Reports in the menu bar.
3. You must select a destination PMP from the available states listed in the drop-down.
4. Enter the start date and end date for the report and click on the “Submit” button. (NCPDP and DEA number are optional)
5. The request will be submitted to PMP Clearinghouse.

The screenshot shows the PMP Clearinghouse interface for Appriss, Inc. The top navigation bar includes links for File Submissions, UCF Submissions, Zero Reports (highlighted), and File Upload. The main header reads "Appriss, Inc. Zero Reports" with a sub-header "MANAGE APPRISS, INC. ZERO REPORTS". The "Zero Report Management" section contains a "Create Zero Report" form with the following fields: a dropdown menu for "PMP" (labeled "Select a PMP..."), text input fields for "Start date" and "End date" (both with "mm/dd/yyyy" placeholders), and text input fields for "Ncpdp" and "Dea number". A "Submit" button is located below the form. Below the form is a table titled "Appriss, Inc. Zero Reports" with a search bar and a table header containing columns: State, Start Date, End Date, Ncpdp, Dea number, NPI, Asap File, and Date Submitted. The table currently displays "No data available in table" and "Showing 0 to 0 of 0 entries".

Zero Reports can also be submitted via sFTP using the ASAP Standard for Zero Reports. For additional details on this method, see [Appendix B - ASAP Zero Report Specifications](#).

5 Data Compliance

Data Compliance allows users of PMP Clearinghouse to view the status of data files they have submitted.

5.1 File Listing

The File Status screen displays information extracted from the data files submitted to PMP Clearinghouse. The screen displays the file name, the number of records identified within the data file, the number of records that contain warnings, the number of records that contain errors, and the date and time of submission. A status column is located at the end of each row displaying the status of the file. If there are errors the status column will state “**Pending Dispensation Error**” and the text will be a hyperlink to the view records screen.

If a file is unable to be parsed into the Clearinghouse application, the appropriate message will display. A new file must be submitted to PMP Clearinghouse. It is not necessary to void a file that failed parsing since it was not successfully submitted to Clearinghouse.

If a file has been submitted by sFTP without using a state specific sub-folder, the file will be displayed and the user will be prompted to select a destination PMP for the data file to be transferred to.

File Listings / File Upload

File Listings DATA FILE SUBMISSIONS STATUS (LAST 30 DAYS) All Accounts Error Files Upload File

Show 10 entries Search

File	State	Records	Records w/ Warnings	Records w/ Errors	Submitted	Status	Status Report
@prodmpstfphomedir/SC/SC_20160211.dat	SC	72	0	1	02/11/2016 08:32AM	Pending Dispensation Error	status report
@prodmpstfphomedir/SC/20160209.dat	SC	251	1	0	02/10/2016 09:16AM	✓	status report
@prodmpstfphomedir/SC/SC_20160210.dat	SC	69	-	-	02/10/2016 08:21AM	✓	status report
@prodmpstfphomedir/SC/SC_20160208.dat	SC	0	-	-	02/09/2016 09:04AM	(duplicate file)	-
@prodmpstfphomedir/SC/SC_20160209.dat	SC	67	1	0	02/09/2016 09:04AM	✓	status report
@prodmpstfphomedir/SC/20160207.dat	SC	253	2	0	02/08/2016 08:59AM	✓	status report
@prodmpstfphomedir/SC/SC_20160208.dat	SC	55	-	-	02/08/2016 08:21AM	✓	status report
@prodmpstfphomedir/SC/SC_20160207.dat	SC	53	0	1	02/07/2016 08:23AM	Pending Dispensation Error	status report
@prodmpstfphomedir/SC/SC_20160206.dat	SC	57	-	-	02/06/2016 09:35AM	✓	status report
@prodmpstfphomedir/SC/20160204.dat	SC	249	-	-	02/05/2016 04:07PM	✓	status report

Showing 1 to 10 of 48 entries ← Previous 1 2 3 4 5 Next →

5.2 Claim Forms Listing

The Claim Forms Listing displays the UCF forms submitted to the PMP Clearinghouse. The screen displays number of warning and the number errors. A status column is located at the end of each row displaying the status of the file. If there are errors, then the status column will state “**Pending Dispensation Error**” and the text will be a hyperlink to the view records screen.

5.3 View Records

The view records screen provides a deeper view of the records within a selected data file that need correcting. The screen displays Prescription Number, Segment Type, Warning Count, and Error Count. A “Correct” button is displayed at the end of each row that will allow the user to make corrections to the record.

To view the records that need correcting:

1. Click on the “**Pending Dispensation Error**” hyperlink in the status column.
2. The View Records screen is displayed.
3. Click on the correct button at the end of the row for the record you want to correct.

5.4 Error Correction

The Error Correction screen allows a user to make corrections to data submitted that did not pass the validation rules. The screen displays all the fields contained within the record and the originally submitted value. A “Corrected Value” column displays the values the user enters to correct the error. The “Message” column displays the relevant error message for the field explaining why it did not pass the validation rules.

For files that failed to parse, the error identified is "best effort" and any information we could not parse is listed as "unparseable" in the file. A corrected file should be submitted.

To correct records:

1. Identify the fields displayed that require corrections.
2. Enter the new corrected value into the corrected value column.
3. Click Submit.
4. The error will be processed through the validation rules.
 - a. If the changes pass the validation rules, the record will be identified as valid and the File Status and View Records screen will be updated.
 - b. If the changes fail the validation rules, the record will continue to be identified as needing corrections. The error message will be updated to identify any new error message.

File Listings / File Errors / Drug Errors

Drug Errors MANAGE AND RESOLVE SUBMISSION ISSUES

Prescription Number: 4045617 Dea Number: Ncpdp Identifier: Filled At: 2016-02-10

Field	Submitted Value	Corrected Value	Messages
Sequence	2	2	✓
Product identifier type	01	NDC	✓
Product identifier	00574007216	00574007216	✓
Quantity		<input type="text"/>	Errors: Quantity value must be present.
Units			✓
Pmix strength text			✓
Pmix product name text			✓

6 Email Reports

Email status reports will be automatically sent to the users associated with a data submitter account. The emailed reports are used to both identify errors in files that have been submitted and confirm a zero report submission.

6.1 File Failed Report

The File Failed report identifies if the submitted file was not able to be parsed and was not processed into PMP Clearinghouse. The file contains a description of the error encountered within the file. In the event of a failed file, a new file should be submitted with the necessary corrections. Failed files are not parsed into Clearinghouse and do not require a Void ASAP file to remove it from the system.

An example of a File Fail report is:

SUBJ: Ohio ASAP file: fake-test3.txt - Parse Failure BODY:

Error Message

----- Failed to decode the value '04' for the bean id
'transactionControlType'.

Summary:

- * File Name: fake-test3.txt
- * ASAP Version: 4.2A
- * Transaction Control Number: unparseable
- * Transaction Control Type: unparseable
- * Date of Submission: January 30, 2016

NOTE: This file could not be received into the system because the system could not recognize its content as a valid ASAP format. Action is required to resolve the issues and a subsequent file should be submitted. As such the information provided in this report is "best effort" and any information we could not parse is listed as "unparseable" in the fields above.

6.2 File Status Report

The File Status report is a report sent to notify the data submitter that a data file is currently being parsed by the state PMP system. The report notifies users of the following scenarios:

- **Total Records:** The total number of records contained in the submitted data file
- **Duplicate Records:** The number of records that were identified as already existing within the PMP system. Duplicate records are not imported to prevent improper patient information
- **Records in Process:** The number of records remaining to be processed into the system (usually only displays a number if the file has not finished loading at the time the report is sent out). Records remaining to be processed will continue to be processed even after the status report is sent.
- **Records with Errors:** Shows how many records that contain errors. These errors will need to be corrected for the record to be imported into the system. If a zero (0) is displayed, there are no errors in the data.
- **Records with Warnings:** Shows how many records that contain warnings. These warnings do not need to be corrected for the record to be imported into the system. If a zero (0) is displayed, there are no warnings in the data.
- **Records imported with warnings:** Shows the number of records that were imported if they had warnings. Records with warning and errors must have the errors corrected to be submitted into the system.
- **Records imported without warnings:** Shows the number of records that were imported that had no warnings.

The initial report is sent out 2 hours after the file has been submitted to the system. Status reports will be received every 24 hours after if errors are continued to be identified within a submitted data file.

The report identifies specific records in the submitted data file and returns identifying information about the record and the specific error identified during the validation process. The report uses fixed width columns and contains a summary section after the error listings. Each column contains a blank 2-digit pad at the end of the data. The columns are set to the following lengths:

Column	Length
DEA	11 (9+pad)
NCPDP	9 (7+pad)
NPI	12 (10+pad)
Prescription	27 (25+pad)
Filled	10 (8+pad)
Segment	18 (16+pad)
Field	18 (16+pad)
Type	9 (7+pad)
Message	Arbitrary

An example of the report is:

SUBJ: OHIO ASAP file: fake-test3.txt - Status Report BODY:

DEA	NCPDP	NPI	Prescription	Filled	Segment	Field	Type	Message
-----	-------	-----	--------------	--------	---------	-------	------	---------

BE1234567	1347347	9034618394	123486379596-0		20130808	Dispensation	refill_number	WARNING message example DE9841394 3491849 4851947597 357199504833-345
20130808	Dispensation	days_supply	ERROR					message example

Summary:

- * File Name: fake-test3.txt
- * ASAP Version: 4.2A
- * Transaction Control Number: 23489504823
- * Transaction Control Type: send
- * Date of Submission: January 30, 2016
- * Total Record Count: ###
- * Duplicate Records: ###
- * In Process Count: ###
- * Records with Error Count: ###
- * Imported Records Count: ###
- * Records Imported with Warning Count: ###

6.3 Zero Report Confirmation

A Zero Report confirmation email is sent to a data submitter who successfully submits a zero report into PMP Clearinghouse. The report displays the PMP states the zero report was submitted to, the date range to be used in the zero report, the date the zero report was submitted to Clearinghouse, and the date the report was originally created by the data submitter. An example of the report is:

SUBJ: ASAP Zero Report: zero_reports_20130301KSMCPS.DAT BODY:

Summary:

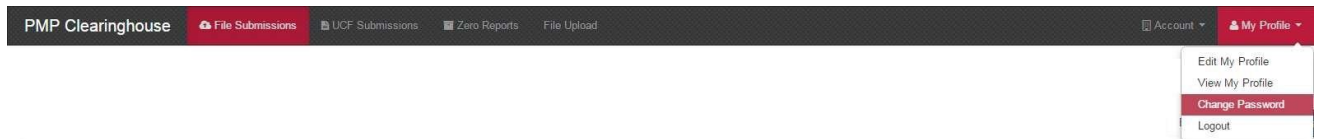
- * File Name: zero_reports_20130301KSMCPS.DAT
- * PMP Name: Ohio
- * Date Range: 2013-03-06 - 2013-03-06
- * Submission Date: 2013-08-23
- * Asap Creation Date: 2013-03-06

7 Password Management

Password management can be handled within PMP Clearinghouse by the user. A user is able to proactively change their password before it expires within the application through their user profile. If a password has expired, or if the user has forgotten the password, they can use “Forgot your password” to change their password.

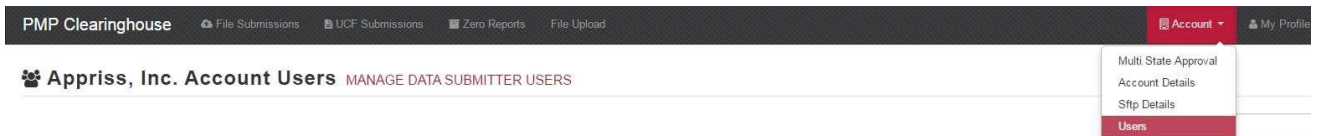
7.1 Changing Your Password

1. When a user wants to change their current password, they navigate to their My Profile section.
2. The user selects the navigation menu item for ‘Change Password’.
3. The user must then enter their current password and enter a new password twice.
4. The new password will take effect once the user has logged out of the application.



7.2 Changing Passwords for Another User

1. Navigate to the Accounts menu option and select Users.
2. Select the Edit button for the desired user.
3. Create a new password for the user and click submit.
4. The user will now use the new password for logging into PMP Clearinghouse.



7.3 Forgot Your Password

1. When a user has forgotten their password or their password has expired, the user should click on the link named “Forgot your password” located on the log in screen.
2. The user must enter the email address they used to register with the application.
3. The user will receive an email containing a link to reset the password for the user’s account.
4. The user must enter the new password twice and then save the password.

The image shows two screenshots of a web application interface. The top screenshot is titled "Login" and features two input fields: "Email Address" with an envelope icon and "Password" with a key icon. Below these fields are two buttons: a blue "Login" button and a "Create an Account" link. The bottom screenshot is titled "Help" and contains two links: "Forgot your password?" and "Didn't receive unlock instructions?".

8 User Profile

8.1. Adding Users to Your Account

PMP Clearinghouse allows data submitters to add new users to the system that will have the same rights and access to submitting and viewing file status. This practice will allow a data submitter to create an account to be used for a backup individual.

1. In Account in the menu bar, the user can select to add users under the section titled “Users”.
2. Click the “New User” button and enter the first name, last name, and email address for the new user.
3. Once saved, the new user will be able to log into PMP Clearinghouse.
 - a. The new user will use the email address used when creating their account.
 - b. The new user must use the “Forgot your password” link to create a password for their account.
4. The new user can now log in and view all data files that have been submitted under the account.

8.2. Adding States to Your Account

If a registered user of PMP Clearinghouse needs to submit data files to an additional state using PMP AWA_Rx_E, the user can submit the request through their Account settings page.

1. Navigate to Account in the main menu and select “Multi State Approval” from the dropdown.
2. The page that displays lists the current states the account has requested to submit data to and the current approval from that state.
3. To submit to a new state using PMP AWARD_{XE}, simply check the state on the list. This will send the data submission request to the desired state’s PMP Administrator for approval.
4. After approval has been granted, the status will change from “Pending” to “Approved”. The account may begin submitting data to the new state.

Note: If submitting by sFTP, data must be located in the proper sub-folder to ensure proper delivery to the desired state PMP.

PMP Clearinghouse | File Submissions | UCF Submissions | Zero Reports | File Upload | Account | My Profile

Appriss, Inc. Account MULTI STATE APPROVAL

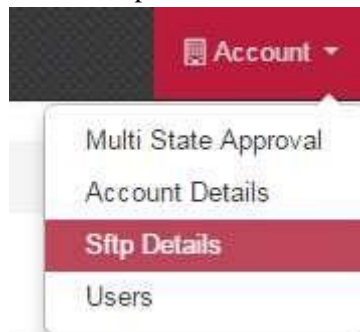
Please select state PMPs that will receive data from this account.
We will not allow data into a state PMP from this account until the appropriate state administrator has approved this account.

Abbv	State	Status
<input checked="" type="checkbox"/>	AK Alaska	Approved
<input checked="" type="checkbox"/>	ID Idaho	Approved
<input checked="" type="checkbox"/>	KS Kansas	Approved
<input checked="" type="checkbox"/>	MS Mississippi	Approved
<input checked="" type="checkbox"/>	NV Nevada	Approved
<input checked="" type="checkbox"/>	ND North Dakota	Approved
<input checked="" type="checkbox"/>	SC South Carolina	Approved
<input type="checkbox"/>	SD South Dakota	

Participating States | Your Approval Status

8.3. Adding sFTP to a Registered Account

If a registered account did not request an sFTP account during the registration process, a user of the account can request one in the Account options.



1. Navigate to the Account drop down menu and select sFTP Details.
2. Select the button to request an sFTP account.

Note: If an sFTP account already exists, the username will be displayed on this screen.

3. Enter the desired password for the sFTP account.
4. The sFTP username will be displayed on the screen after the sFTP account has been created.

9 Document Information

Disclaimer

Appriss has made every effort to ensure the accuracy of the information in this document at the time of printing. However, information may change without notice.

Revision History

Version	Date	Changes
1.0	01/03/2017	<input type="checkbox"/> Initial Draft
1.1	01/18/2017	<input type="checkbox"/> Added Exemptions, state logo, and updated verbiage in guide
1.2	02/07/2017	<input type="checkbox"/> Changes to Appendix A
1.3	03/16/2017	<input type="checkbox"/> Changes to Appendix A for PHA & PRE fields
1.4	09/29/2017	<input type="checkbox"/> Update guide to reflect ASAP 4.2A requirements

10 Assistance and Support

Technical Assistance

If you need additional help with any of the procedures outlined in this guide, you can:

Contact Appriss at: 844-464-4767

Create a support request using the following URL <https://apprissmpclearinghouse.zendesk.com/hc/en-us/requests/new>

Technical assistance is available 24 hours a day, 365 days a year.

Administrative Assistance

State of Ohio Board of Pharmacy
77 South High Street 17th Floor
Columbus, OH 43215-6126

Phone: (614) 466-4143 (Option 1)

Email: pharmacy@ohiopmp.gov

Fax: (614) 644-8556

Chad Garner

Director of OARRS

11 Appendix A – ASAP 4.2A Specifications

The following information is the required definitions for submitting ASAP 4.2A records to OHIO PMP.

The following table will list the Segment, Element ID, Element Name, and Requirement. The Requirement column uses the following codes:

- R = Required by OHIO
- N = Not Required but Accepted if Submitted

Element ID	Element Name	Requirement
TH – Transaction Header - Required To indicate the start of a transaction. It also assigns the segment terminator, data element separator, and control number.		
TH01	Version/Release Number Code uniquely identifying the transaction. Format = x.x	R
TH02	Transaction Control Number Sender assigned code uniquely identifying a transaction.	R
TH03	Transaction Type Identifies the purpose of initiating the transaction. <ul style="list-style-type: none"> • 01 Send/Request Transaction • 02 Acknowledgement (used in Response only) • 03 Error Receiving (used in Response only) • 04 Void (used to void a specific Rx in a realtime transmission or an entire batch that has been transmitted) 	R
TH04	Response ID Contains the Transaction Control Number of a transaction that initiated the transaction. Required in response transaction only.	N
TH05	Creation Date Date the transaction was created. Format: CCYYMMDD.	R
TH06	Creation Time Time the transaction was created. Format: HHMMSS or HHMM.	R

TH07	File Type <ul style="list-style-type: none"> • P = Production • T = Test 	R
TH08	Routing Number Reserved for real-time transmissions that go through a network switch to indicate, if necessary, the specific state PMP the transaction should be routed to.	N
TH09	Segment Terminator Character Sets the actual value of the data segment terminator for the entire transaction.	R
IS – Information Source – Required To convey the name and identification numbers of the entity supplying the information.		
IS01	Unique Information Source ID Reference number or identification number. (Example: phone number)	R
IS02	Information Source Entity Name Entity name of the Information Source.	R
IS03	Message Free-form text message.	N
PHA – Pharmacy Header – Required To identify the pharmacy or the dispensing prescriber. It is required that information be provided in at least one of the following fields: PHA01, PHA02, or PH03.		
PHA01	National Provider Identifier (NPI) Identifier assigned to the pharmacy by CMS.	R (If unavailable, enter 1234567893)
PHA02	NCPDP/NABP Provider ID Identifier assigned to pharmacy by the National Council for Prescription Drug Programs.	N
PHA03	DEA Number Identifier assigned to the pharmacy by the Drug Enforcement Administration.	R (If unavailable, enter OH1111119)

PHA04	Pharmacy Name Freeform name of the pharmacy.	R (If PHA01 and PHA03 are unavailable, Pharmacy name must be entered)
PHA05	Address Information – 1 Freeform text for address information.	R
PHA06	Address Information – 2 Freeform text for address information, if needed.	N
PHA07	City Address Freeform text for city name.	R
PHA08	State Address U.S. Postal Service state code.	R
PHA09	ZIP Code Address U.S. Postal Service ZIP Code.	R
PHA10	Phone Number Complete phone number including area code. Do not include hyphens.	R
PHA11	Contact Name Free-form name.	N
PHA12	Chain Site ID Store number assigned by the chain to the pharmacy location. Used when PMP needs to identify the specific pharmacy from which information is required.	N
PHA13	Pharmacy's Permit Number/License Number This field Helps identify the sending pharmacy.	N
PAT – Patient Information – Required		
Used to report the patient's name and basic information as contained in the pharmacy record.		
PAT01	ID Qualifier of Patient Identifier Code identifying the jurisdiction that issues the ID in PAT03.	N

PAT02	<p>ID Qualifier</p> <p>Code to identify the type of ID in PAT03. If PAT02 is used, PAT03 is required.</p> <ul style="list-style-type: none"> • 01 Military ID • 02 State Issued ID • 03 Unique System ID • 04 Permanent Resident Card (Green Card) • 05 Passport ID • 06 Driver's License ID • 07 Social Security Number • 08 Tribal ID • 99 Other (agreed upon ID) 	N
PAT03	<p>ID of Patient</p> <p>Identification number for the patient as indicated in PAT02. An example would be the driver's license number.</p>	N
PAT04	<p>ID Qualifier of Additional Patient Identifier</p> <p>Code identifying the jurisdiction that issues the ID in PAT06. Used if the PMP requires such identification.</p>	N
PAT05	<p>Additional Patient ID Qualifier</p> <p>Code to identify the type of ID in PAT06 if the PMP requires a second identifier. If PAT05 is used, PAT06 is required.</p> <ul style="list-style-type: none"> • 01 Military ID • 02 State Issued ID • 03 Unique System ID • 04 Permanent Resident Card (Green Card) • 05 Passport ID • 06 Driver's License ID • 07 Social Security Number • 08 Tribal ID • 99 Other (agreed upon ID) 	N

PAT06	<p>Additional ID</p> <p>Identification that might be required by the PMP to further identify the individual. An example might be in that PAT03 driver's license is required and in PAT06 Social Security number is also required.</p>	N
PAT07	<p>Last Name</p> <p>Patient's last name.</p>	R
PAT08	<p>First Name</p> <p>Patient's first name.</p>	R
PAT09	<p>Middle Name</p> <p>Patient's middle name or initial, when available.</p>	N
PAT10	<p>Name Prefix</p> <p>Patient's name prefix such as Mr. or Dr., if available.</p>	N
PAT11	<p>Name Suffix</p> <p>Patient's name suffix such as Jr. or the III, if available.</p>	N
PAT12	<p>Address Information – 1</p> <p>Free-form text for street address information.</p>	R
PAT13	<p>Address Information – 2</p> <p>Free-form text for additional address information, when available.</p>	N
PAT14	<p>City Address</p> <p>Free-form text for city name.</p>	R
PAT15	<p>State Address</p> <p>U.S. Postal Service state code</p> <p>Note: Field has been sized to handle international patients not residing in the U.S.</p>	R
PAT16	<p>ZIP Code Address</p> <p>U.S. Postal Service ZIP code.</p> <p>Populate with zeros if patient address is outside the U.S.</p>	R
PAT17	<p>Phone Number</p> <p>Complete phone number including area code. Do not include hyphens. For situations in which the patient does not have a phone number, submit ten 9's.</p>	R

PAT18	<p>Date of Birth Date patient was born. Format: CCYYMMDD.</p>	R
PAT19	<p>Gender Code Code indicating the sex of the patient.</p> <ul style="list-style-type: none"> • F Female • M Male • U Unknown 	R
PAT20	<p>Species Code Used if required by the PMP to differentiate a prescription for an individual from one prescribed for an animal.</p> <ul style="list-style-type: none"> • 01 Human • 02 Veterinary Patient 	R
PAT21	<p>Patient Location Code Code indicating where patient is located when receiving pharmacy services.</p> <ul style="list-style-type: none"> • 01 Home • 02 Intermediary Care • 03 Nursing Home • 04 Long-Term/Extended Care • 05 Rest Home • 06 Boarding Home • 07 Skilled-Care Facility • 08 Sub-Acute Care Facility • 09 Acute Care Facility • 10 Outpatient • 11 Hospice • 98 Unknown • 99 Other 	N
PAT22	<p>Country of Non-U.S. Resident Used when the patient's address is a foreign country and PAT12 through PAT16 are left blank.</p>	R

PAT23	Name of Animal Used if required by the PMP for prescriptions written by a veterinarian and the pharmacist has access to this information at the time of dispensing the prescription, if available.	N
DSP – Dispensing Record – Required To identify the basic components of a dispensing of a given prescription order including the date and quantity.		
DSP01	Reporting Status DSP01 requires one of the following codes, and an empty or blank field no longer indicates a new prescription transaction: <ul style="list-style-type: none"> • 00 New Record (indicates a new prescription dispensing transaction) • 01 Revise (indicates that one or more data element values in a previously submitted transaction are being revised) • 02 Void (message to the PMP to remove the original prescription transaction from its data, or to mark the record as invalid or to be ignored). *Note: For prescriptions voided with a code 02, a limited data set is being offered as an option PDMPs can elect to use rather than requiring the entire prescription to be voided. This option is offered in order to streamline the process in the pharmacy when voiding a prescription. See Appendix D.	R
DSP02	Prescription Number Serial number assigned to the prescription by the pharmacy.	R
DSP03	Date Written Date the prescription was written (authorized). Format: CCYYMMDD	R
DSP04	Refills Authorized The number of refills authorized by the prescriber.	R
DSP05	Date Filled Date prescription was prepared. Format: CCYYMMDD	R

DSP06	<p>Refill Number</p> <p>Number of the fill of the prescription.</p> <p>0 indicates New Rx; 01-99 is the refill number.</p>	R
DSP07	<p>Product ID Qualifier</p> <p>Used to identify the type of product ID contained in DSP08.</p> <ul style="list-style-type: none"> • 01 NDC • 06 Compound 	R
DSP08	<p>Product ID</p> <p>Full product identification as indicated in DSP07, including leading zeros without punctuation. If Compound is indicated in DSP07 then use 99999 as the first 5 characters; CDI then becomes required.</p>	R
DSP09	<p>Quantity Dispensed</p> <p>Number of metric units dispensed in metric decimal format. Example: 2.5</p> <p>Note: For compounds show the first quantity in CDI04.</p>	R
DSP10	<p>Days Supply</p> <p>Estimated number of days the medication will last.</p>	R
DSP11	<p>Drug Dosage Units Code</p> <p>Identifies the unit of measure for the quantity dispensed in DSP09.</p> <ul style="list-style-type: none"> • 01 Each • 02 Milliliters (ml) • 03 Grams (gm) 	R
DSP12	<p>Transmission Form of Rx Origin Code</p> <p>Code indicating how the pharmacy received the prescription.</p> <ul style="list-style-type: none"> • 01 Written Prescription • 02 Telephone Prescription • 03 Telephone Emergency Prescription • 04 Fax Prescription • 05 Electronic Prescription • 06 Transfer/Forwarded • 99 Other 	N

DSP13	<p>Partial Fill Indicator</p> <p>To indicate whether it is a partial fill.</p> <ul style="list-style-type: none"> • 00 Not a partial fill • 01 First partial fill <p>Note: For additional fills per prescription, increment by 1. So the second partial fill would be reported as 02, up to a maximum of 99.</p>	R
DSP14	<p>Pharmacist National Provider Identifier (NPI)</p> <p>Identifier assigned to the pharmacist by CMS. This number can be used to identify the pharmacist dispensing the medication.</p>	N
DSP15	<p>Pharmacist State License Number</p> <p>This data element can be used to identify the pharmacist dispensing the medication.</p> <p>Assigned to the pharmacist by the State Licensing Board.</p>	N
DSP16	<p>Classification Code for Payment Type</p> <p>Code identifying the type of payment, i.e. how it was paid for.</p> <ul style="list-style-type: none"> • 01 Private Pay (cash, check, debit, credit) • 02 Medicaid • 03 Medicare • 04 Commercial Insurance • 05 Military Installations and VA • 06 Workers' Compensation • 07 Indian Nations 	R
DSP17	<p>Date Sold</p> <p>Used to determine the date the prescription left the pharmacy, not the date it was filled, if the dates differ.</p> <p>Format: CCYYMMDD</p>	N
DSP18	<p>RxNorm Code Qualifier</p> <p>RXNorm Code that is populated in the DRU-010-09 field in the SCRIPT transaction.</p> <ul style="list-style-type: none"> • 01 Sematic Clinical Drug (SCD) • 02 Semantic Branded Drug (SBD) • 03 Generic Package (GPCK) • 04 Branded Package (BPCK) 	N

DSP19	<p>RxNorm Code</p> <p>Used for electronic prescriptions to capture the prescribed drug product identification.</p>	N
DSP20	<p>Electronic Prescription Reference Number</p> <p>This field should be populated with the Initiator Reference Number from field UIB-030-01 in the SCRIPT transaction.</p>	N
DSP21	<p>Electronic Prescription Order Number</p> <p>This field will be populated with the Initiator Control Reference from field UIH-030-01 in the SCRIPT standard.</p>	N
DSP22	<p>Quantity Prescribed</p> <p>This field adds clarity to the value reported in DSP13, Partial Fill Indicator.</p>	N
DSP23	<p>Rx SIG</p> <p>This field captures the actual directions printed on the prescription vial label.</p>	N
DSP24	<p>Treatment Type</p> <p>While this field can be used to indicate that the prescription was for opioid dependency treatment when Code 02 is used, it can also be used to provide other reasons for the opioid prescription through use of the additional codes.</p> <ul style="list-style-type: none"> • 01 Not Used for Opioid Dependency Treatment • 02 Used for Opioid Dependency Treatment • 03 Pain Associated with Active and Aftercare Cancer Treatment • 04 Palliative Care in Conjunction with a Serious Illness • 05 End-of-Life and Hospice Care • 06 A Pregnant Individual with a Pre-existing Prescription for Opioids • 07 Acute Pain for an Individual with an Existing Opioid Prescription for Chronic Pain • 08 Individuals Pursuing an Active Taper of Opioid Medications • 09 Patient is Participating in a Pain Management Contract 	N

	<ul style="list-style-type: none"> • 99 Other (trading partner agreed upon reason) <p>*Note: Codes 03-99 can only be reported if provided by the prescriber with the prescription.</p>	
DSP25	<p>Diagnosis Code</p> <p>This field is used to report the ICD-10 code or CDT. If required by a PDMP, this field would be populated only when the ICD-10 or CDT code is included with the prescription.</p>	R
<p>PRE – Prescriber Information – Required</p> <p>To identify the prescriber of the prescription.</p>		
PRE01	<p>National Provider Identifier (NPI)</p> <p>Identifier assigned to the prescriber by CMS, when available.</p>	<p>R</p> <p>(Provide if PRE02 unavailable. If also PRE01 also unavailable, enter 1234567893)</p>
PRE02	<p>DEA Number</p> <p>Identifying number assigned to a prescriber or an institution by the Drug Enforcement Administration (DEA).</p>	<p>R</p> <p>(If unavailable, provide PRE01. If PRE01 is also unavailable, enter OH111119)</p>
PRE03	<p>DEA Number Suffix</p> <p>Identifying number assigned to a prescriber by an institution when the institution's number is used as the DEA number, if applicable.</p>	N(provide if applicable)
PRE04	<p>Prescriber State License Number</p> <p>Identification assigned to the Prescriber by the State Licensing Board, if no DEA number is available.</p>	R (If PRE01 and PRE02 unavailable)

PRE05	Last Name Prescriber's last name.	R (If PRE01 and PRE02 are unavailable, name must be entered.)
PRE06	First Name Prescriber's first name.	R (If PRE01 and PRE02 are unavailable, name must be entered.)
PRE07	Middle Name Prescriber's middle name or initial, if available.	N
PRE08	Phone Number Complete phone number including area code. Do not include hyphens.	N
PRE09	XDEA Number This field is in addition to Treatment Type in the DSP segment. This gives PDMPs the option to require the XDEA Number (NADEAN) in the PRE segment.	N
CDI – Compound Drug Ingredient Detail – Situational To identify the individual ingredients that make up a compound.		
CDI01	Compound Drug Ingredient Sequence Number First reportable ingredient is 1; each additional reportable Ingredient is increment by 1.	R
CDI02	Product ID Qualifier Code to identify the type of product ID contained in CDI03. <input type="checkbox"/> 01 NDC	R
CDI03	Product ID Full product identification as indicated in CDI02, including leading zeros without punctuation.	R

CDI04	<p>Compound Ingredient Quantity</p> <p>Metric decimal quantity of the ingredient identified in CDI03.</p> <p><input type="checkbox"/> Example: 2.5</p>	R
CDI05	<p>Compound Drug Dosage Units Code</p> <p>Identifies the unit of measure for the quantity dispensed in CDI04.</p> <ul style="list-style-type: none"> • 01 Each (used to report as package) • 02 Milliliters (ml) (for liters; adjust to the decimal milliliter equivalent) • 03 Grams (gm) (for milligrams; adjust to the decimal gram equivalent) 	R
<p>AIR – Additional Information Reporting – Situational</p> <p>To report other information if required by the state.</p>		
AIR01	<p>State Issuing Rx Serial Number</p> <p>U.S.P.S. state code of state that issued serialized prescription blank. This is required if AIR02 is used.</p>	N
AIR02	<p>State Issued Rx Serial Number</p> <p><input type="checkbox"/> Number assigned to state issued serialized prescription blank.</p>	N
AIR03	<p>Issuing Jurisdiction</p> <p>Code identifying the jurisdiction that issues the ID in AIR04. Used if required by the PMP and AIR04 is equal to 02 or 06.</p>	N
AIR04	<p>ID Qualifier of Person Dropping Off or Picking Up Rx</p> <p>Used to identify the type of ID contained in AIR05 for person dropping off or picking up the prescription.</p> <ul style="list-style-type: none"> • 01 Military ID • 02 State Issued ID • 03 Unique System ID • 04 Permanent Resident Card (Green Card) • 05 Passport ID • 06 Driver's License ID • 07 Social Security Number • 08 Tribal ID • 99 Other (agreed upon ID) 	N

AIR05	ID of Person Dropping Off or Picking Up Rx ID number of patient or person picking up or dropping off the prescription.	N
AIR06	Relationship of Person Dropping Off or Picking Up Rx Code indicating the relationship of the person. <ul style="list-style-type: none"> • 01 Patient • 02 Parent/Legal Guardian • 03 Spouse • 04 Caregiver • 99 Other 	N
AIR07	Last Name of Person Dropping Off or Picking Up Rx Last name of person picking up the prescription.	N
AIR08	First Name of Person Dropping Off or Picking Up Rx <input type="checkbox"/> First name of person picking up the prescription.	N
AIR09	Last Name or Initials of Pharmacist Last name or initials of pharmacist dispensing the medication.	N
AIR10	First Name of Pharmacist First name of pharmacist dispensing the medication.	N
AIR11	Dropping Off/Picking Up Identifier Qualifier Additional qualifier for the ID contained in AIR05 <ul style="list-style-type: none"> • 01 Person Dropping Off • 02 Person Picking Up • 03 Unknown/Not Applicable 	N
TP – Pharmacy Trailer – Required To identify the end of the data for a given pharmacy and to provide a count of the total number of detail segments included for the pharmacy.		
TP01	Detail Segment Count Number of detail segments included for the pharmacy including the pharmacy header (PHA) including the pharmacy trailer (TP) segments.	R
TT – Transaction Trailer – Required To identify the end of the transaction and to provide the count of the total number of segments included in the transaction.		

TT01	Transaction Control Number Identifying control number that must be unique. Assigned by the originator of the transaction. Must match the number in TH02.	R
TT02	Segment Count <input type="checkbox"/> Total number of segments included in the transaction including the header and trailer segments.	R

12 Appendix B – ASAP Zero Report Specifications

The following information table contains the required definitions for submitting Zero Reports via sFTP or manual upload to the OHIO PMP. The table below lists the Segment and Element ID with prepopulated data to be used as an example for constructing a Zero Report. For more details regarding these Segment or Elements IDs or for the purposes of reporting actual dispensations please refer to the previous section, [Appendix A – ASAP 4.2A Specifications](#)

Element ID	Element Name	Requirement
TH – Transaction Header - Required		
TH01	4.2A	R
TH02	123456	R
TH05	20150101	R
TH06	223000	R
TH07	P	R
TH09	\\	R
IS – Information Source – Required		
IS01	7705555555	R
IS02	PHARMACY NAME	R
IS03	Date Range of Report #CCYYMMDD#-#CCYYMMDD#	R
PHA – Pharmacy Header – Required		
PHA03	ZZ1234567	R
PAT – Patient Information – Required		
PAT07	REPORT	R
PAT08	ZERO	R
DSP – Dispensing Record – Required		
DSP05	20150101	R
PRE – Prescriber Information		R
CDI – Compound Drug Ingredient Detail		
AIR – Additional Information Reporting		
TP – Pharmacy Trailer – Required		

TP01	7	R
TT – Transaction Trailer – Required		
TT01	123456	R
TT02	10	R

The following is an example, using the above values, of how a Zero Report would look.

```

TH*4.2A*123456*01**20150108*223000*P**\
IS*7705555555*PHARMACY NAME*#20150101#-#20150107#\
PHA*** ZZ1234567\
PAT*****REPORT*ZERO*****\
DSP*****20150108*****\
PRE*\
CDI*\
AIR*\
TP*7\
TT*123456*10\

```

13 Appendix C – sFTP Configuration

If submitting data via sFTP, a Clearinghouse account with sFTP access needs to already exist.

See [Creating Your Account](#) to register with PMP Clearinghouse.

See [Adding sFTP to a Registered Account](#) to add sFTP access to an existing PMP Clearinghouse account. **sFTP Connection Details:**

Hostname: sftp.pmpclearinghouse.net

It is recommended to use the hostname when configuring the connection rather than the IP Address as the IP Address is subject to change.

Port: 22

The port will always be 22

Credentials – Account credentials (username and password) can be found within the PMP Clearinghouse website. Login to PMP Clearinghouse > click Account > sFTP Details > Edit

The username cannot be modified, however, the password can be updated. The current sFTP password cannot be seen or recovered. If it is unknown/lost the user will need to create a new one.

SFTP Account UPDATE SFTP PASSWORD

Username: apprisstest@prodpmpsftp

Password

Must be at least 8 characters

Password confirmation

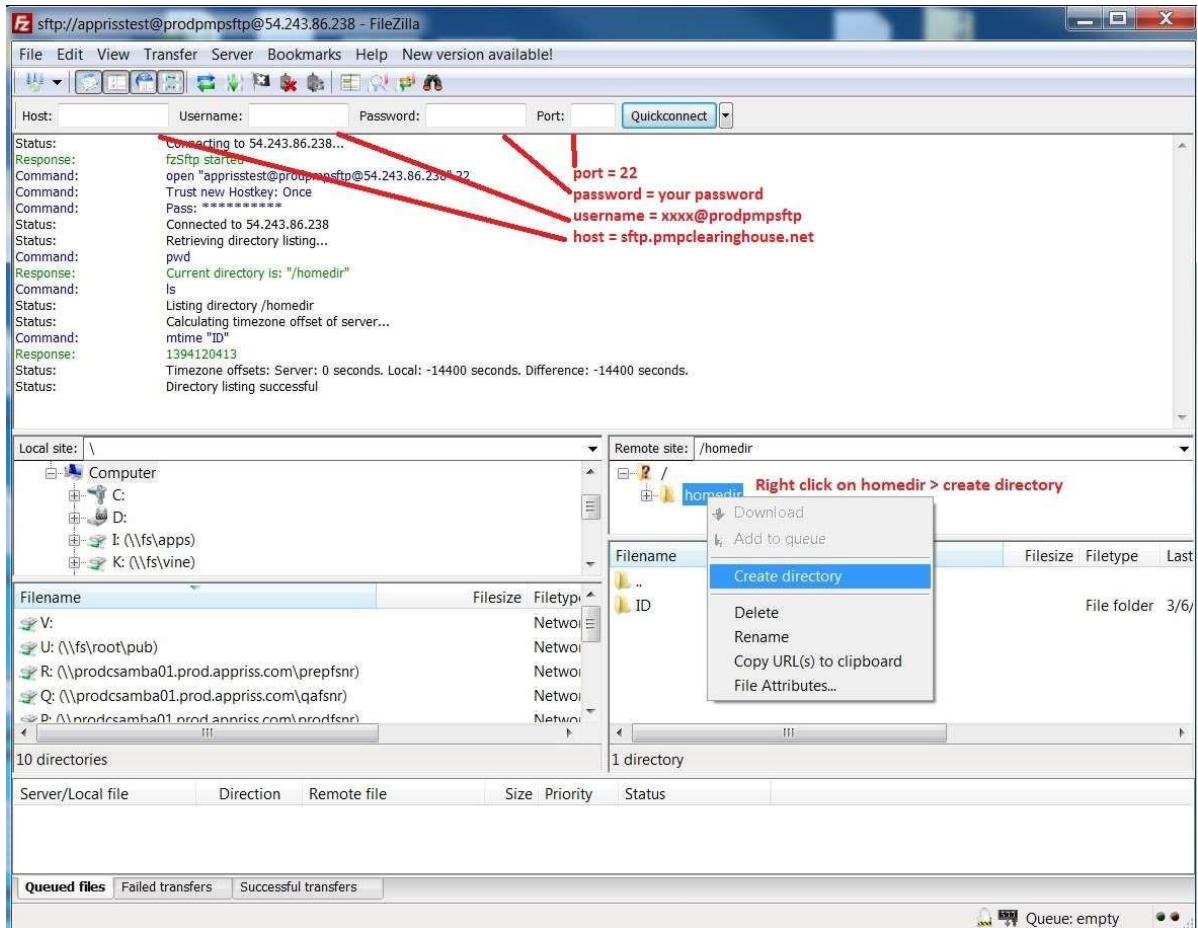
Users can test the sFTP connection but will not be able to submit data to a PMP until their account has been approved by the state administrator.

State Subfolders

PMP Clearinghouse is the data repository for several states. As such, data submitted via sFTP must be placed in a state abbreviated folder so that it can be properly imported to the correct state. The creation of subfolders must be done outside of the PMP Clearinghouse website using 3rd party software such as a SSH Client or a command line utility. Files placed in the root/home directory of the sFTP server will not be imported. This will cause the dispensing entity to appear as non-compliant/delinquent.

The following are two methods by which to create state subfolders for sFTP submissions.

1. Via SSH client (ex: WinSCP/FileZilla)
 - Log into sFTP Account and create the directories needed under /homedir.

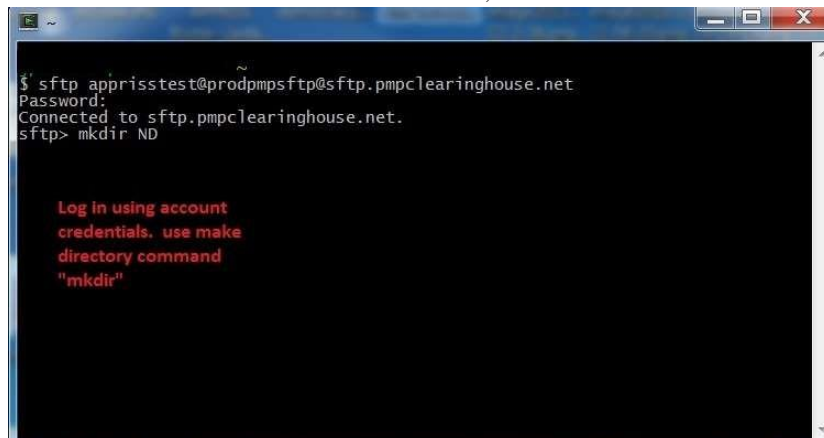


2. Via command prompt

- a. Log into sFTP Account using command prompt. Once logged in, type: “mkdir” (then the directory name you wish to create)

Example: mkdir KS

NOTE: The state folder must be titled as above, with the two-letter Abbreviation.



Pharmacy software will need to be configured to place files in the appropriate state folder when submitting. The software vendor may need be contacted for additional assistance on this process. NOTE: Capitalization of the abbreviated state folders names have no bearing on whether or not

Clearinghouse processes the files, however, some pharmacy systems, especially *nix based systems, will require the exact case be used when specifying the target folder.

Public (SSH/RSA) Key Authentication

SSH key authentication is supported by PMP Clearinghouse. The generation of the key is outside the scope of this document, however, general guidelines about the key along with how to import/load the key is provided.

*PGP Encryption is not supported

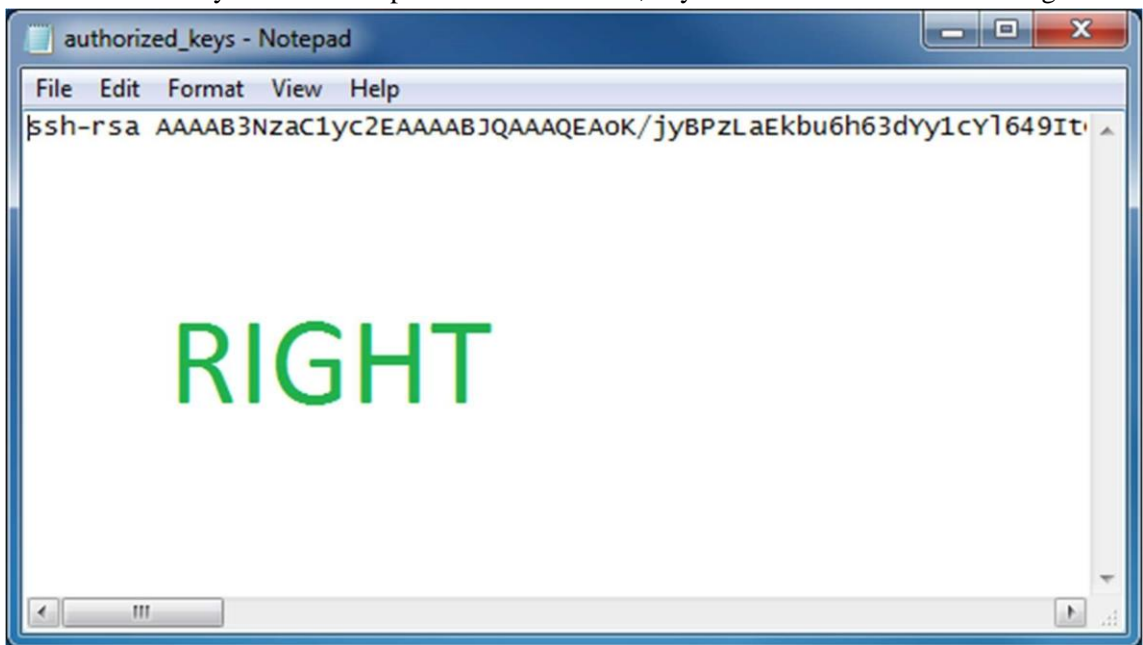
Supported Key Types:

- o SSH-2 RSA 2048 bit length

Unsupported Key Types:

- o SSH-1 RSA and SSH-2 DSA keys are not supported.

Correct Public Key Format – If opened in a text editor, key should look like the following:



Incorrect Public Key Format – If opened in a text editor, key SHOULD NOT look like the following:

```
----- BEGIN SSH2 PUBLIC KEY -----  
Comment: "rsa-key-20130904"  
AAAAB3NzaC1yc2EAAAABJQAAAQEAOK/jyBPzLaEkbu6h63dyy1cY1649ItC1vaeq  
s3demLMUEGLKouwVMG/NPeN9sSxy5FeMLAquhIE13x1tT75w3bDZ5yea/si1agPH  
jXOT9bZH4G5LG7pcVCB1PcTXMLU+HVDVvaCmdv+Qxk7yna9OUUAESF5wOqe8L1Bw  
r1NXKkriiLmPNmcIs4Lw3ypU0JJbNHMJ5v8go2Vvfm3/kdxx1nhz+nPq2fepUj3i  
YM16os6OFdI66G3v6dXNHmdzNFoFXKgoaoqzL982S5k3xK6Rvy7Dbdtvk4FQu1d6  
D15HRMXJhf0D2I3/XWRPc5r8Cco8+mC1wf9QHU16g6L1gPcqCw==  
----- END SSH2 PUBLIC KEY -----  
|  
  
WRONG
```

Once the key has been generated it should be named “authorized_keys”

NOTE: There is no file extension and an underscore between the words authorized and keys.

A .ssh subfolder needs to be created in the home directory of the of the sFTP account. The “authorized_keys” file must be placed in the .ssh folder. The creation of this folder follows the same process as creating a state subfolder. Refer to the [State Subfolders](#) section for steps on creating subfolders.