

RECLAMATION

Managing Water in the West

Bighorn Basin Interagency Meeting

hosted by

Wyoming Game & Fish Department

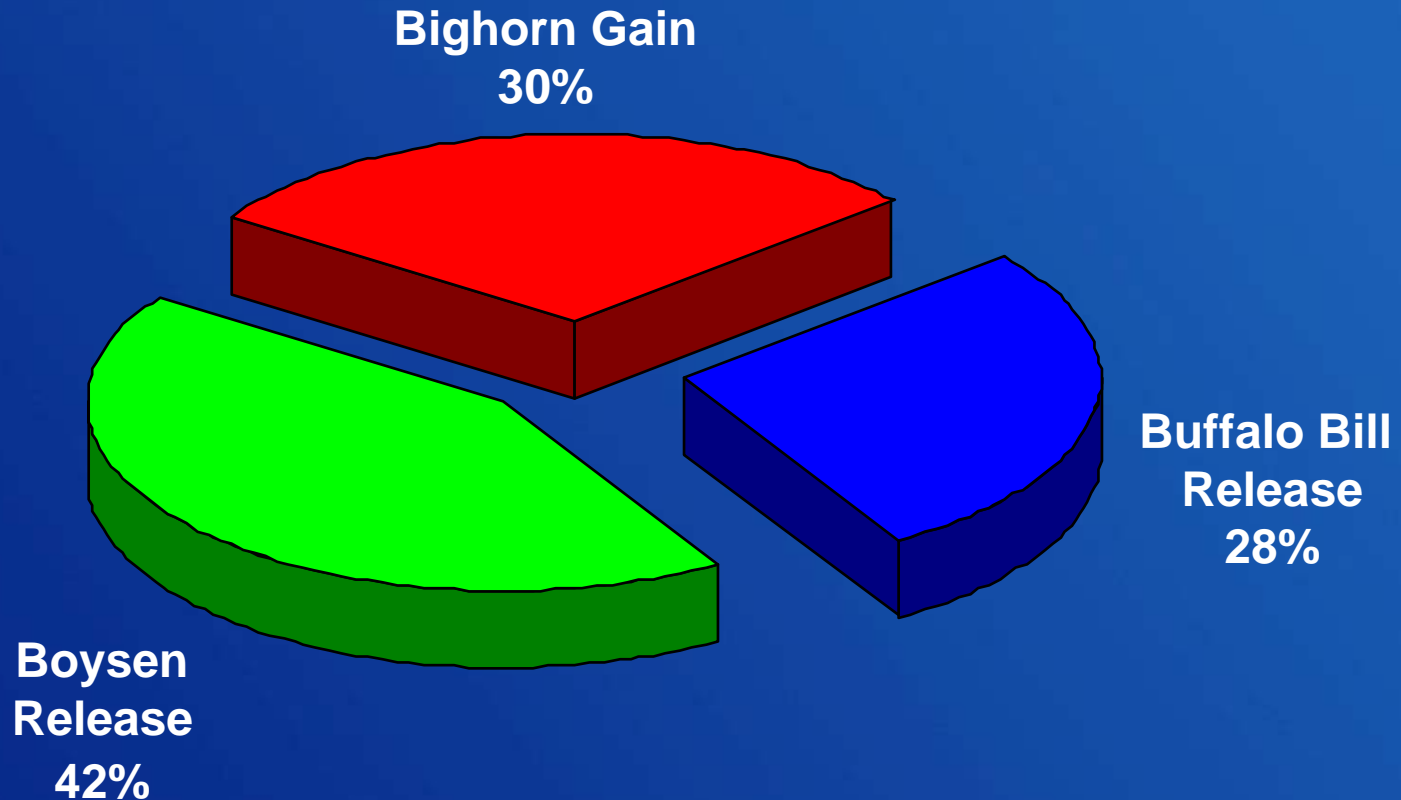
National Park Service Visitor Center

Lovell, Wyoming

March 13, 2008

Bighorn Lake Annual Inflow Distribution

Based on 1967-2005 Data

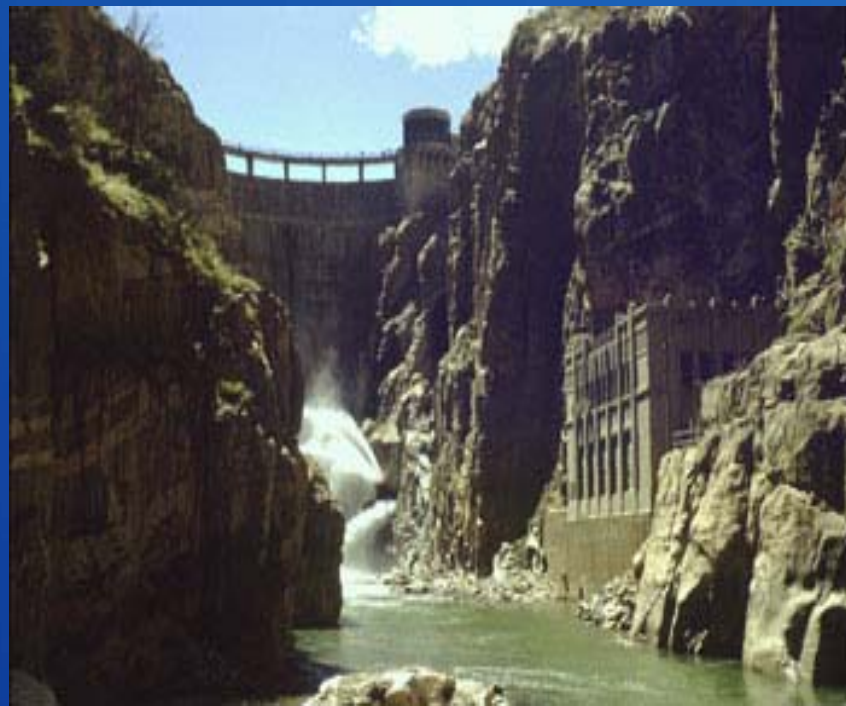


RECLAMATION

Operations in the Bighorn River Basin are closely coordinated with the Wyoming Area Office which is responsible for Boysen & Buffalo Bill operations.



**Boysen Dam and Reservoir
Wind River**



**Buffalo Bill Dam and Reservoir
Shoshone River**

RECLAMATION

OPERATING OBJECTIVES

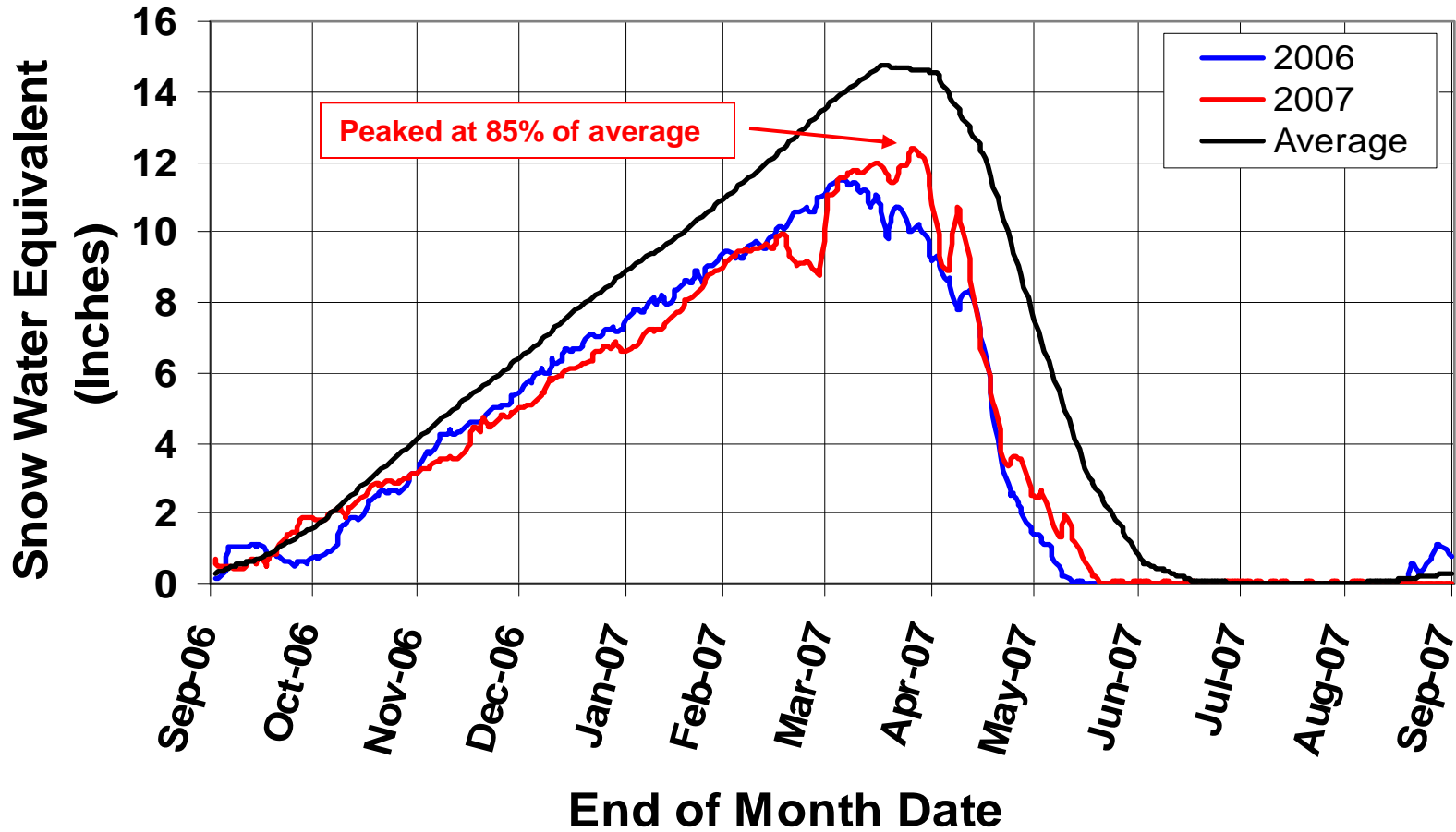
- ✓ Recognize all downstream senior water rights.
- ✓ Meet contractual commitments for stored water.
- ✓ Maintain adequate storage space for flood control.
- ✓ Maximize the power benefits.
- ✓ Maintain lake levels for recreation, reservoir fishery, and waterfowl interests.
- ✓ Maintain river flow levels for river fishery.

Recap of Water Year 2007

- ✓ **Mountain Snowpack**
- ✓ **Inflow to Bighorn Lake**
- ✓ **Bighorn River Releases**
- ✓ **Bighorn Lake Storage Conditions**

Recap of Water Year 2007

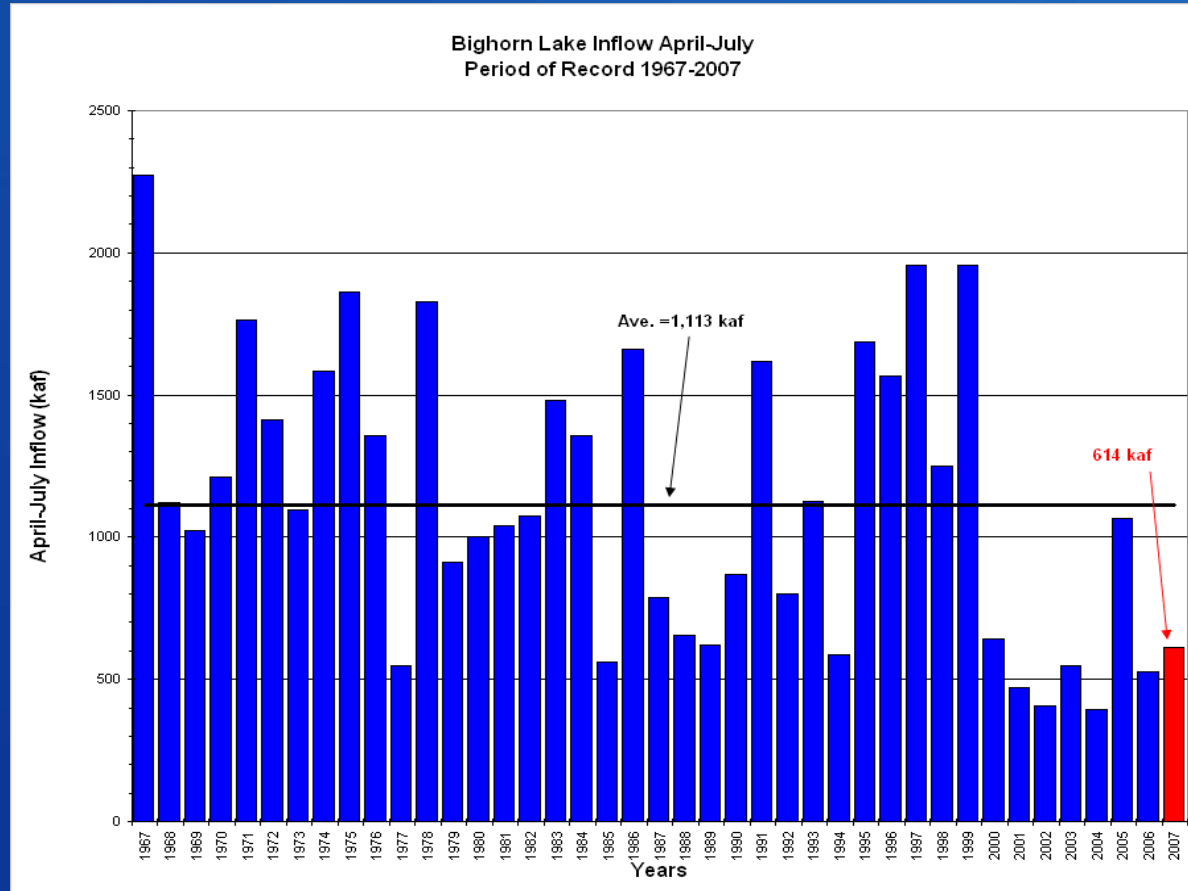
Mountain Snowpack Conditions



Recap of Water Year 2007

April-July Inflow (acre-feet)

BY YEAR		RANKED		
YEAR	SUMMATION	MISS	YEAR	SUMMATION
1967	2271119.00	0	1967	2271119.00
1968	1121723.50	0	1997	1957909.38
1969	1022204.56	0	1999	1954361.38
1970	1211447.62	0	1975	1863084.12
1971	1761603.00	0	1978	1828506.38
1972	1412024.50	0	1971	1761603.00
1973	1097200.62	0	1995	1687499.88
1974	1583350.50	0	1986	1659118.12
1975	1863084.12	0	1991	1619218.88
1976	1356278.50	0	1974	1583350.50
1977	549853.88	0	1996	1567308.00
1978	1828506.38	0	1983	1482762.75
1979	910146.06	0	1972	1412024.50
1980	999731.81	0	1984	1356584.88
1981	1038870.25	0	1976	1356278.50
1982	1073918.62	0	1998	1249862.25
1983	1482762.75	0	1970	1211447.62
1984	1356584.88	0	1993	1124839.38
1985	562000.69	0	1968	1121723.50
1986	1659118.12	0	1973	1097200.62
1987	788028.94	0	1982	1073918.62
1988	653689.31	0	2005	1065040.62
1989	622719.25	0	1981	1038870.25
1990	867187.94	0	1969	1022204.56
1991	1619218.88	0	1980	999731.81
1992	801294.06	0	1979	910146.06
1993	1124839.38	0	1990	867187.94
1994	587368.44	0	1992	801294.06
1995	1687499.88	0	1987	788028.94
1996	1567308.00	0	1988	653689.31
1997	1957909.38	0	2000	643018.12
1998	1249862.25	0	1989	622719.25
1999	1954361.38	0	2007	614100.00
2000	643018.12	0	1994	587368.44
2001	469897.88	0	1985	562000.69
2002	408570.88	0	1977	549853.88
2003	548248.62	0	2003	548248.62
2004	392148.84	0	2006	528198.00
2005	1065040.62	0	2001	469897.88
2006	528198.00	0	2002	408570.88
2007	614100.00	0	2004	392148.84



2007 - 9th Lowest of Record

2000's - Lowest of Record

Average of 54 years:
2007 is 51 percent of average

1113300

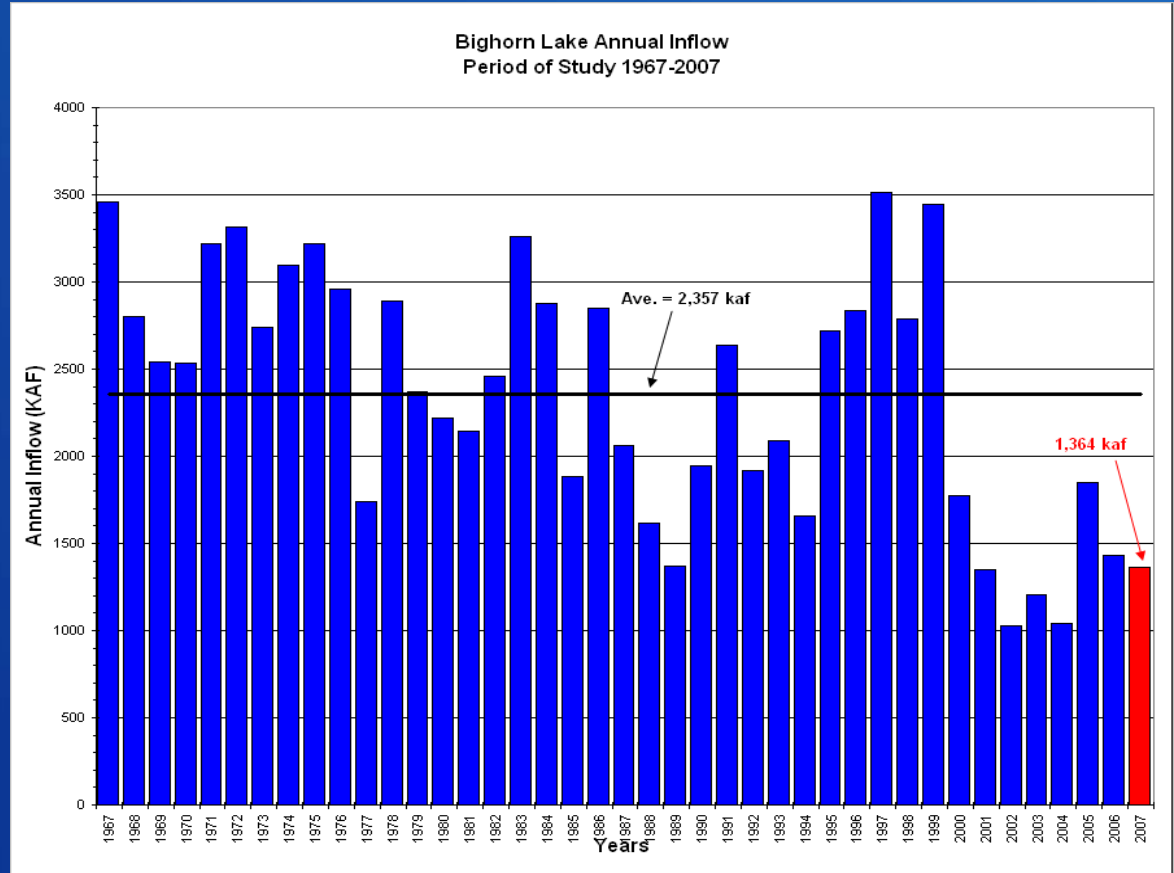
RECLAMATION

Recap of Water Year 2007

Annual Inflow (acre-feet)

BY YEAR		RANKED		
YEAR	SUMMATION	MISS	YEAR	SUMMATION
1967	3458698.00	0	1997	3516450.50
1968	2805523.00	0	1967	3458698.00
1969	2538975.00	0	1999	3443793.50
1970	2536716.75	0	1972	3320208.00
1971	3215818.25	0	1983	3259034.00
1972	3320208.00	0	1975	3221720.25
1973	2738184.75	0	1971	3215818.25
1974	3094672.25	0	1974	3094672.25
1975	3221720.25	0	1976	2966925.50
1976	2966925.50	0	1984	2887518.75
1977	1740630.88	0	1978	2887243.00
1978	2887243.00	0	1986	2851288.75
1979	2370932.00	0	1996	2842566.75
1980	2226959.75	0	1968	2805523.00
1981	2143234.00	0	1998	2787867.25
1982	2458121.25	0	1973	2738184.75
1983	3259034.00	0	1995	2718941.00
1984	2887518.75	0	1991	2639744.75
1985	1883584.62	0	1969	2538975.00
1986	2851288.75	0	1970	2536716.75
1987	2064115.00	0	1982	2458121.25
1988	1619253.75	0	1979	2370932.00
1989	1367536.38	0	1980	2226959.75
1990	1942052.25	0	1981	2143234.00
1991	2639744.75	0	1993	2092193.75
1992	1925226.38	0	1987	2064115.00
1993	2092193.75	0	1990	1942052.25
1994	1657113.88	0	1992	1925226.38
1995	2718941.00	0	1985	1883584.62
1996	2842566.75	0	2005	1847983.25
1997	3516450.50	0	2000	1776761.12
1998	2787867.25	0	1977	1740630.88
1999	3443793.50	0	1994	1657113.88
2000	1776761.12	0	1988	1619253.75
2001	1347515.12	0	2006	1432633.00
2002	1029821.19	0	2007	1364200.00
2003	1208316.75	0	1989	1367536.38
2004	1041571.12	0	2001	1347515.12
2005	1847983.25	0	2003	1208316.75
2006	1432633.00	0	2004	1041571.12
2007	1364200.00	0	2002	1029821.19

Average of 54 years: 2357000
 2007 is 54 percent of average



2007 - 6th Lowest of Record

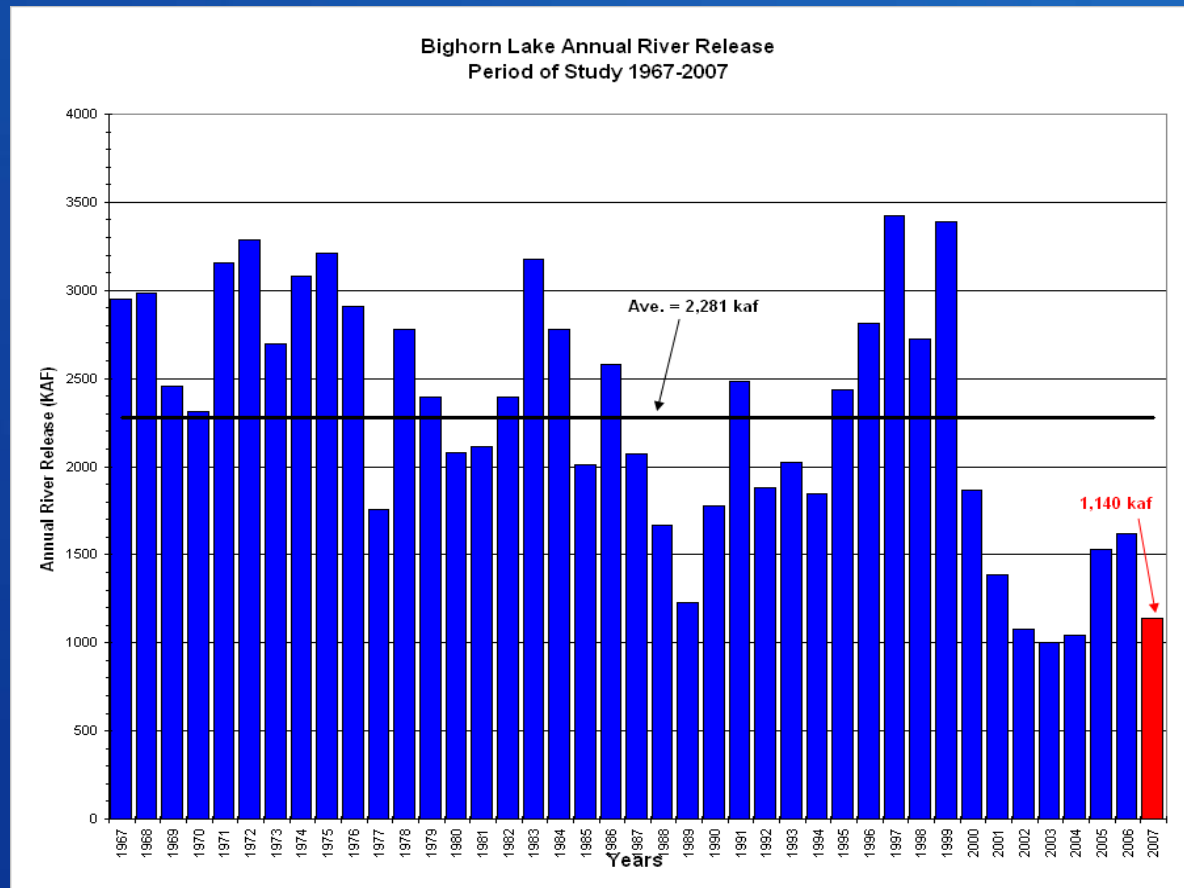
2000's - Lowest of Record

RECLAMATION

Recap of Water Year 2007

Total Annual River Release (acre-feet)

BY YEAR		RANKED		
YEAR	TOTAL	YEAR	TOTAL	
1967	2950342.25	0	1997	3420569.75
1968	2986805.00	0	1999	3390721.00
1969	2453562.00	0	1972	3285960.75
1970	2311800.25	0	1975	3212272.25
1971	3153999.75	0	1983	3176994.25
1972	3285960.75	0	1971	3153999.75
1973	2693269.50	0	1974	3079622.75
1974	3079622.75	0	1968	2986805.00
1975	3212272.25	0	1967	2950342.25
1976	2907066.25	0	1976	2907066.25
1977	1759073.50	0	1996	2812201.50
1978	2781031.00	0	1984	2781852.75
1979	2393363.50	0	1978	2781031.00
1980	2079321.62	0	1998	2726333.00
1981	2112384.75	0	1973	2693269.50
1982	2397572.00	0	1986	2577931.00
1983	3176994.25	0	1991	2483863.25
1984	2781852.75	0	1969	2453562.00
1985	2013182.38	0	1995	2434736.25
1986	2577931.00	0	1982	2397572.00
1987	2074388.50	0	1979	2393363.50
1988	1664645.25	0	1970	2311800.25
1989	1226968.88	0	1981	2112384.75
1990	1776188.00	0	1980	2079321.62
1991	2483863.25	0	1987	2074388.50
1992	1883047.62	0	1993	2021183.12
1993	2021183.12	0	1985	2013182.38
1994	1842472.88	0	1992	1883047.62
1995	2434736.25	0	2000	1867542.12
1996	2812201.50	0	1994	1842472.88
1997	3420569.75	0	1990	1776188.00
1998	2726333.00	0	1977	1759073.50
1999	3390721.00	0	1988	1664645.25
2000	1867542.12	0	2006	1617845.75
2001	1385071.00	0	2005	1530368.38
2002	1076322.25	0	2001	1385071.00
2003	1004899.62	0	1989	1226968.88
2004	1045489.62	0	2007	1139823.12
2005	1530368.38	0	2002	1076322.25
2006	1617845.75	0	2004	1045489.62
2007	1139823.12	0	2003	1004899.62



2000's - Lowest of Record

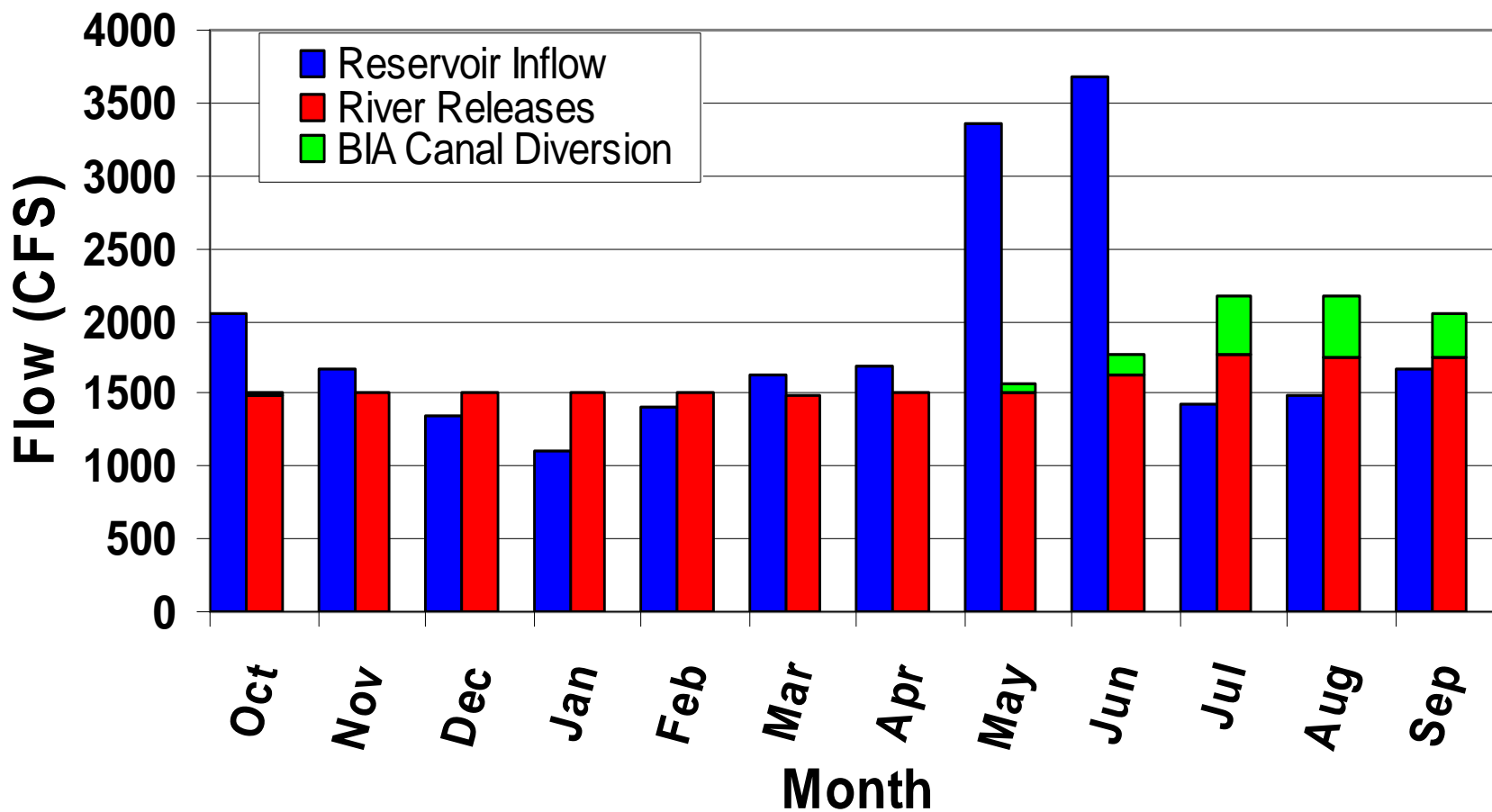
2007 - 4th Lowest of Record

Average of 41 years: 2281270.50
2007 is 50 percent of average

RECLAMATION

Recap of Water Year 2007

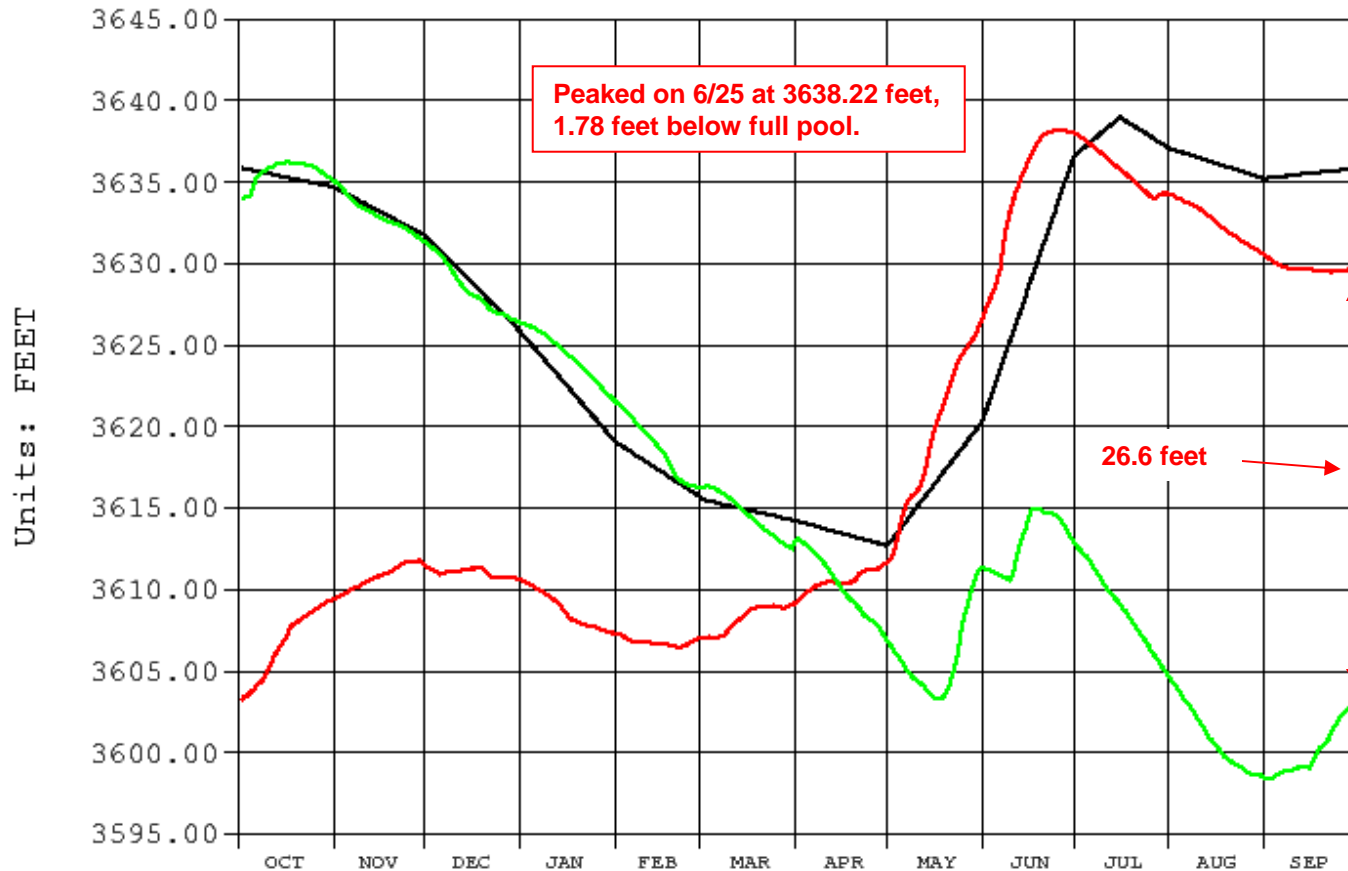
2007 Bighorn Flows



Recap of Water Year 2007

Archive Data From 1-OCT Through 30-SEP

Plotted 03/01/2008 17:21



BHR Bighorn Lake (Yellowtail), Bighorn River near Fort Smith, MT

FB_OPAV Operation Model Average Forebay Elevation (feet)

FB Reservoir Forebay Elevation (feet)

Average

2007 2006

RECLAMATION

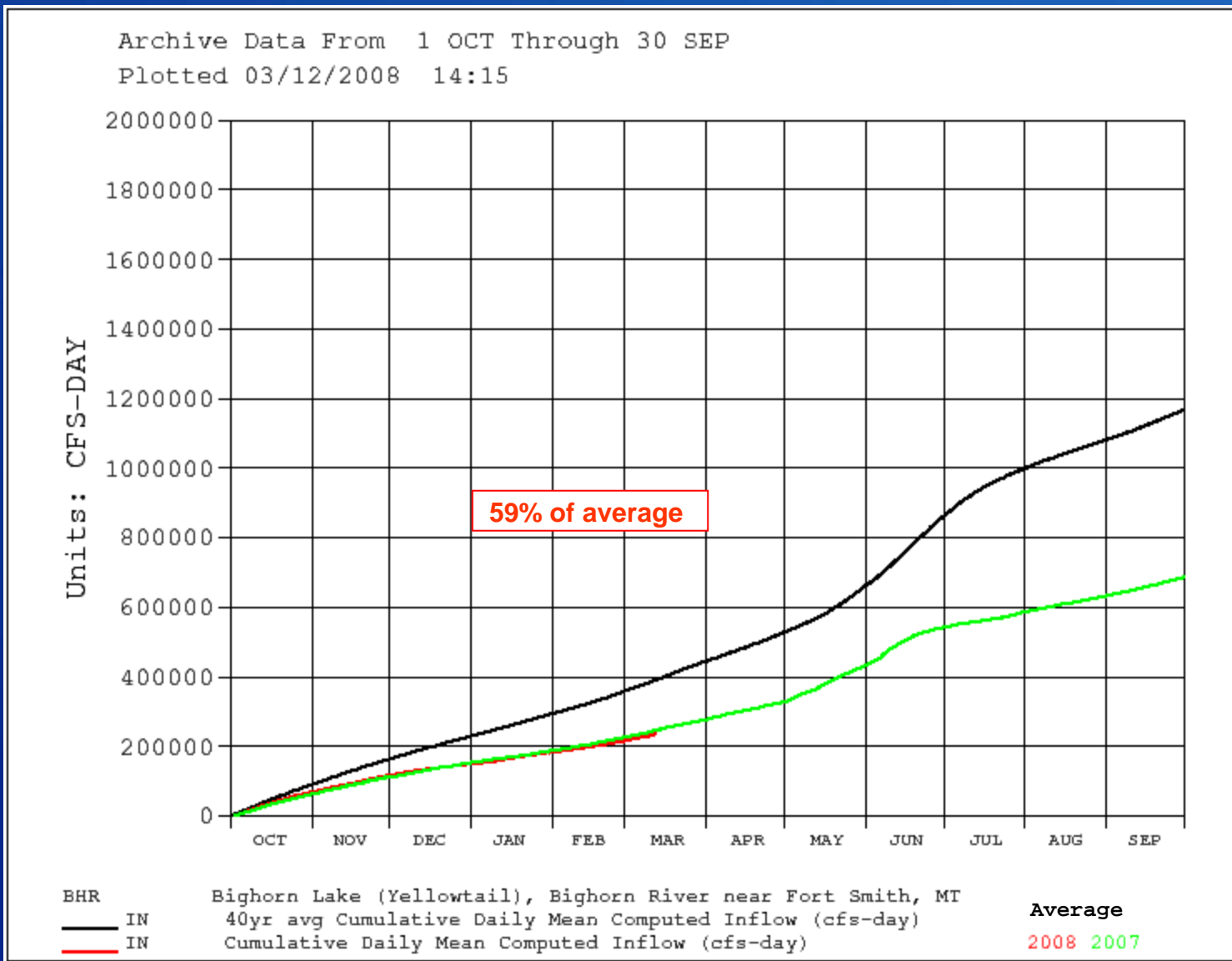
Current Conditions

and

2008 Water Supply Outlook

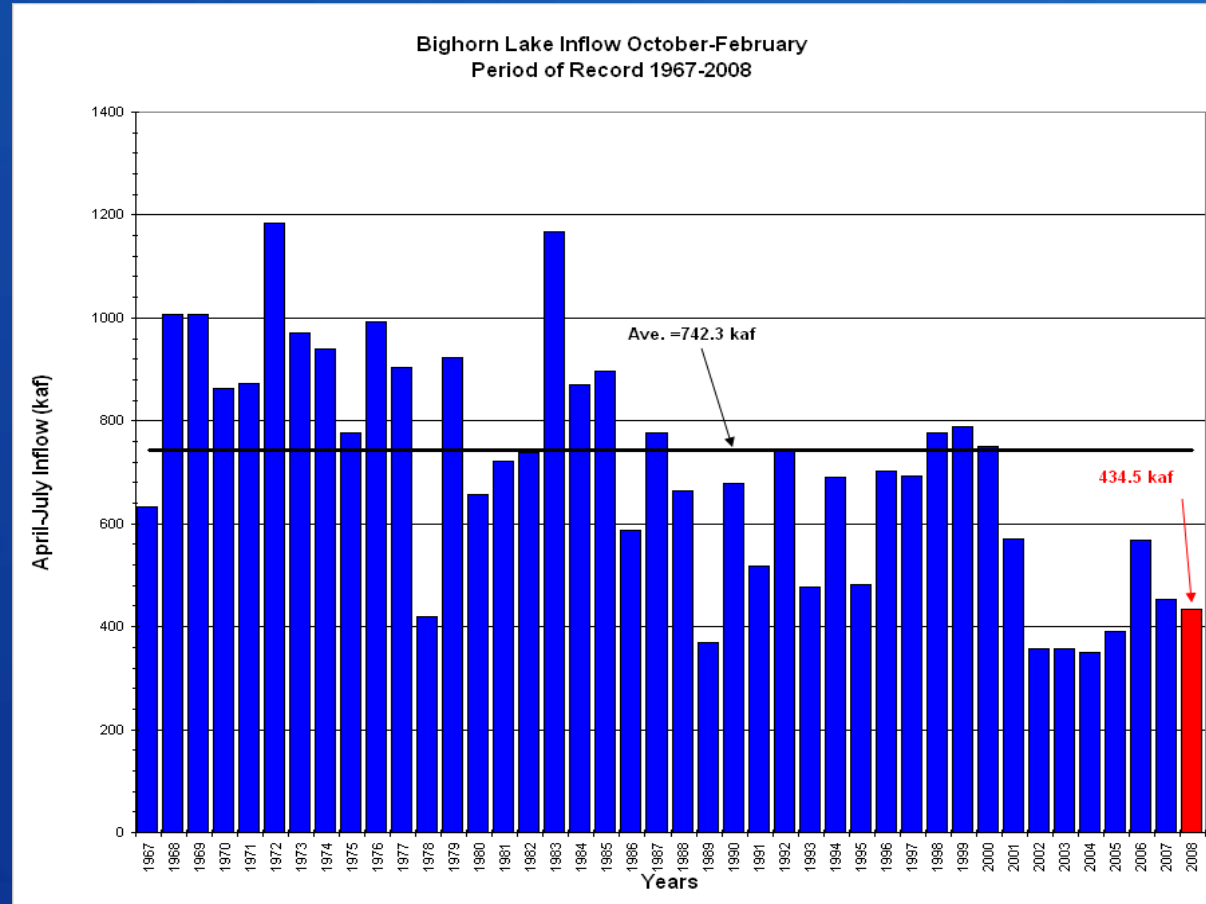
RECLAMATION

Cumulative Inflow Since October 1, 2007



October-February Inflow (Acre-Feet)

BY YEAR			RANKED	
YEAR	SUMMATION	MISS	YEAR	SUMMATION
1967	631860.12	0	1972	1183467.75
1968	1006331.44	0	1983	1167321.38
1969	1007956.44	0	1969	1007956.44
1970	863571.56	0	1968	1006331.44
1971	871712.81	0	1976	991732.12
1972	1183467.75	0	1973	971472.19
1973	971472.19	0	1974	939794.69
1974	939794.69	0	1979	922220.44
1975	776611.06	0	1977	904044.19
1976	991732.12	0	1985	897027.06
1977	904044.19	0	1971	871712.81
1978	419889.78	0	1984	871231.19
1979	922220.44	0	1970	863571.56
1980	656034.19	0	1999	789435.62
1981	720497.06	0	1987	777781.75
1982	738008.69	0	1998	777739.81
1983	1167321.38	0	1975	776611.06
1984	871231.19	0	2000	751464.62
1985	897027.06	0	1992	742378.81
1986	587168.00	0	1982	738008.69
1987	777781.75	0	1981	720497.06
1988	665148.12	0	1996	702316.69
1989	369291.69	0	1997	693003.00
1990	678009.94	0	1994	690217.06
1991	517673.03	0	1990	678009.94
1992	742378.81	0	1988	665148.12
1993	476090.53	0	1980	656034.19
1994	690217.06	0	1967	631860.12
1995	482786.62	0	1985	587168.00
1996	702316.69	0	2001	570347.31
1997	693003.00	0	2006	568448.19
1998	777739.81	0	1991	517673.03
1999	789435.62	0	1995	482786.62
2000	751464.62	0	1993	476090.53
2001	570347.31	0	2007	452074.41
2002	356157.91	0	2008	434546.16
2003	357313.78	0	1978	419889.78
2004	348981.44	0	2005	390645.22
2005	390645.22	0	1989	369291.69
2006	568448.19	0	2003	357313.78
2007	452074.41	0	2002	356157.91
2008	434546.16	0	2004	348981.44



2008 – 7th Lowest of Record

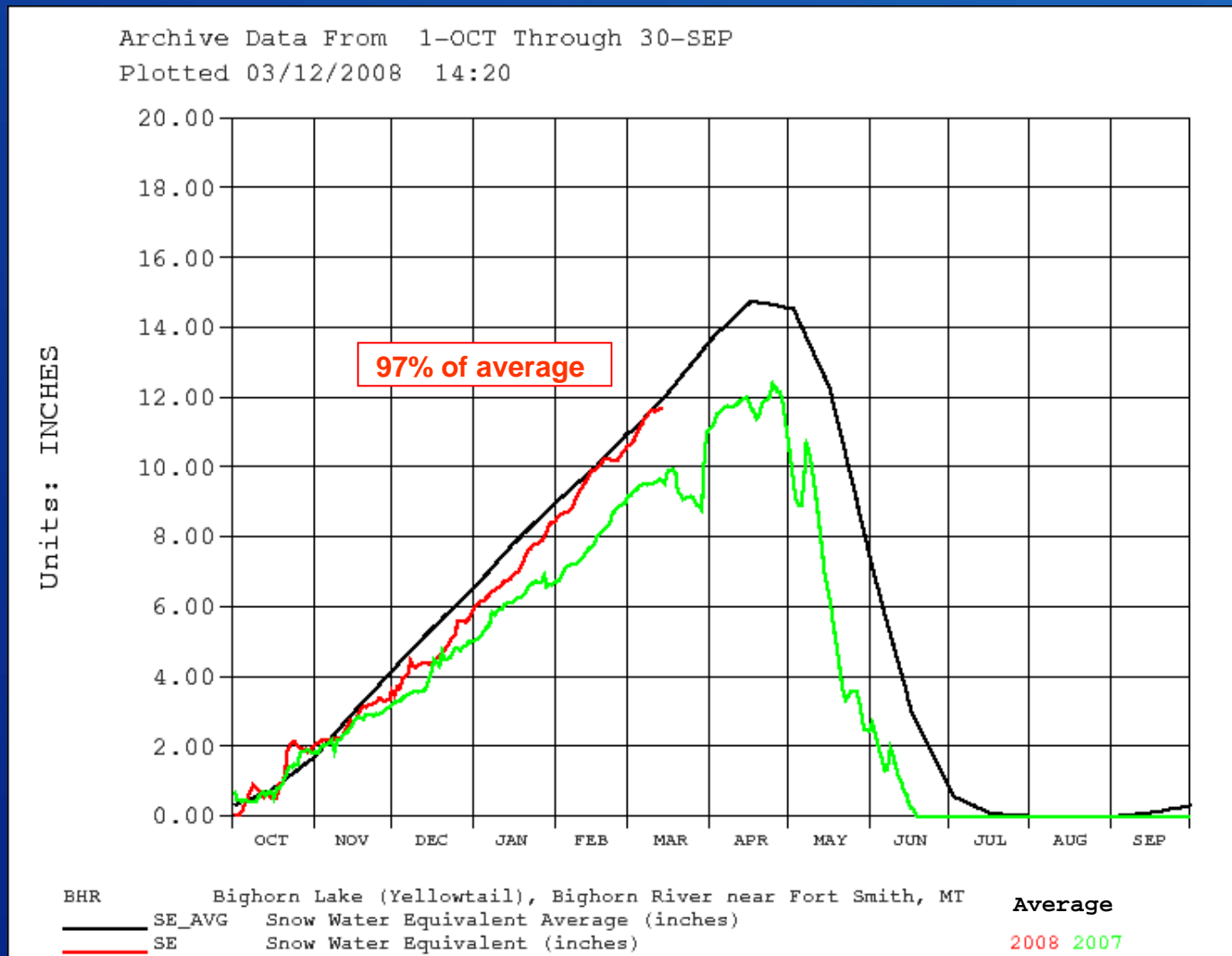
2000's - Lowest of Record

Average of 54 years: 742300
2008 is 59 percent of average

RECLAMATION

Snow Water Equivalent in Mountain Snowpack
















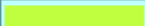





March 1, 2008








RECLAMATION

MONTANA SNOTEL Snow Water Equivalent Update Graph

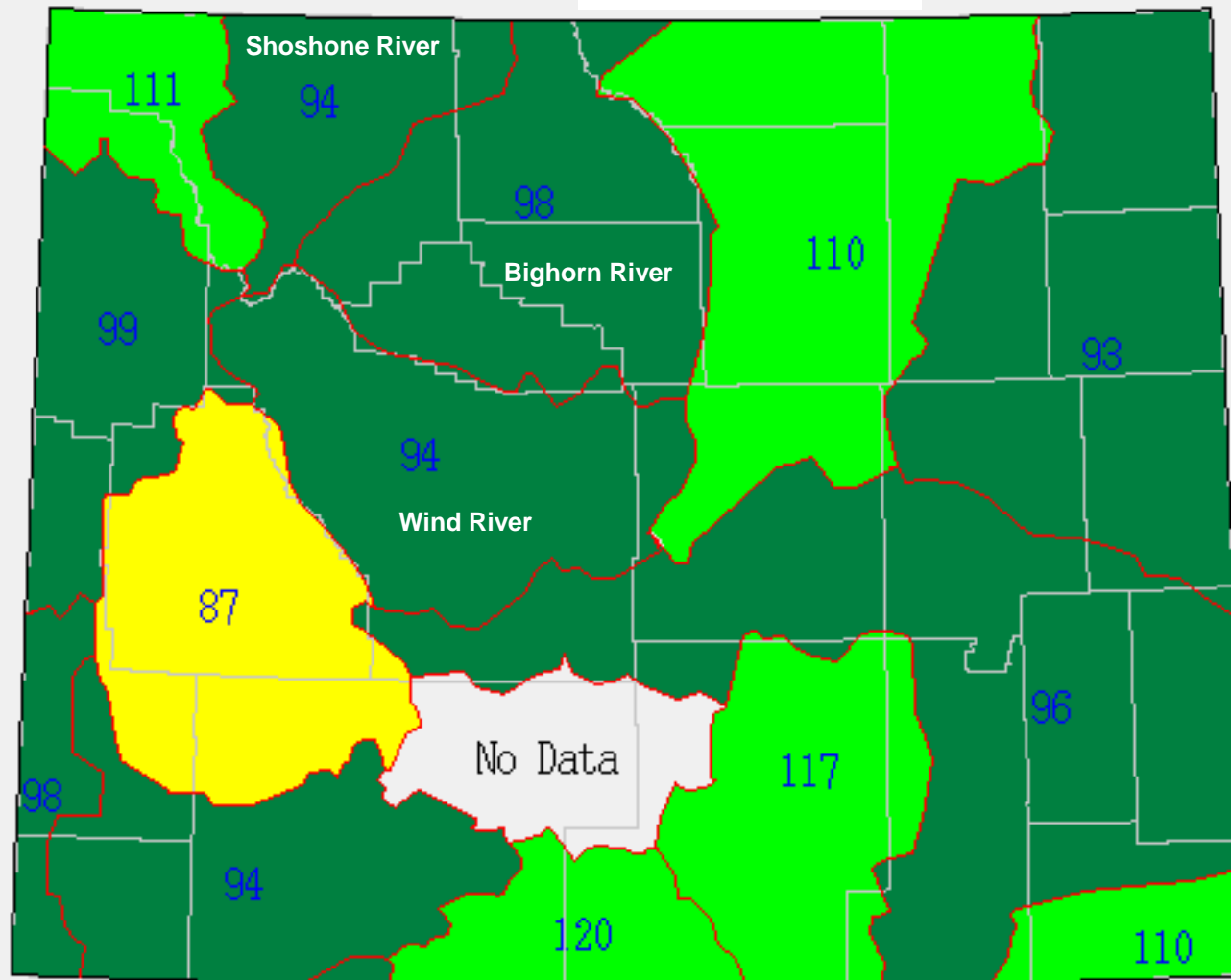
As of TUESDAY: MARCH 4, 2008

Basin	Snow Water Equivalent Percent of Average
KOOTENAI RIVER BASIN	 114%
FLATHEAD RIVER BASIN	 102%
UPPER CLARK FORK RIVER BASIN	 97%
BITTERROOT RIVER BASIN	 120%
LOWER CLARK FORK RIVER BASIN	 116%
JEFFERSON RIVER BASIN	 103%
MADISON RIVER BASIN	 109%
GALLATIN RIVER BASIN	 109%
MISSOURI HEADWATERS	 107%
HEADWATERS MISSOURI MAINSTEM	 98%
SMITH, JUDITH, AND MUSSELSHELL RIVER BASINS	 100%
SUN, TETON AND MARIAS RIVER BASINS	 111%
MISSOURI MAINSTEM RIVER BASIN	 102%
ST MARY AND MILK RIVER BASINS	 106%
UPPER YELLOWSTONE RIVER BASIN	 103%
WIND RIVER BASIN (WYOMING)	 94%
SHOSHONE RIVER BASIN (WYOMING)	 93%
BIGHORN RIVER BASIN (WYOMING)	 98%
TONGUE RIVER BASIN (WYOMING)	 103%
POWDER RIVER BASIN (WYOMING)	 114%
LOWER YELLOWSTONE RIVER BASIN	 97%

Legend:	 <70%	 70-90%	 91-110%	 111-130%	 >130%
---------	--	--	---	--	---

State of Wyoming - Snow Water Content % of Average

March 5, 2008



* = Data may not provide a valid measure of conditions

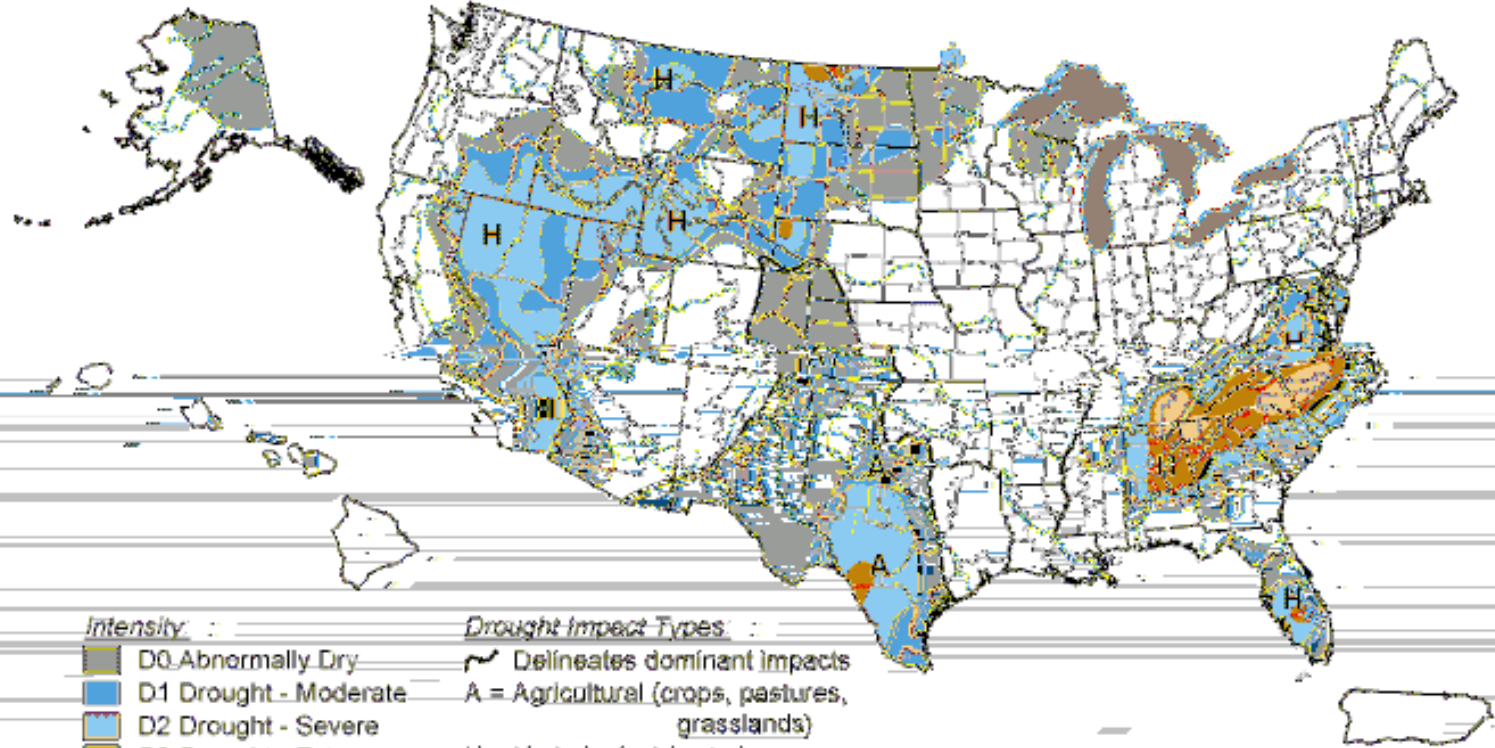
RECLAMATION

U.S. Drought Assessment – March

U.S. Drought Monitor

March 4, 2008

Valid 7 a.m. EST



Intensity :
D0 Abnormally Dry
D1 Drought - Moderate
D2 Drought - Severe
D3 Drought - Extreme
D4 Drought - Exceptional

Drought Impact Types :
Delineates dominant impacts
A = Agricultural (crops, pastures, grasslands)
H = Hydrological (water)

The Drought Monitor focuses on broad-scale conditions. Local conditions may vary. See accompanying text summary for forecast statements.

<http://drought.unl.edu/dm>

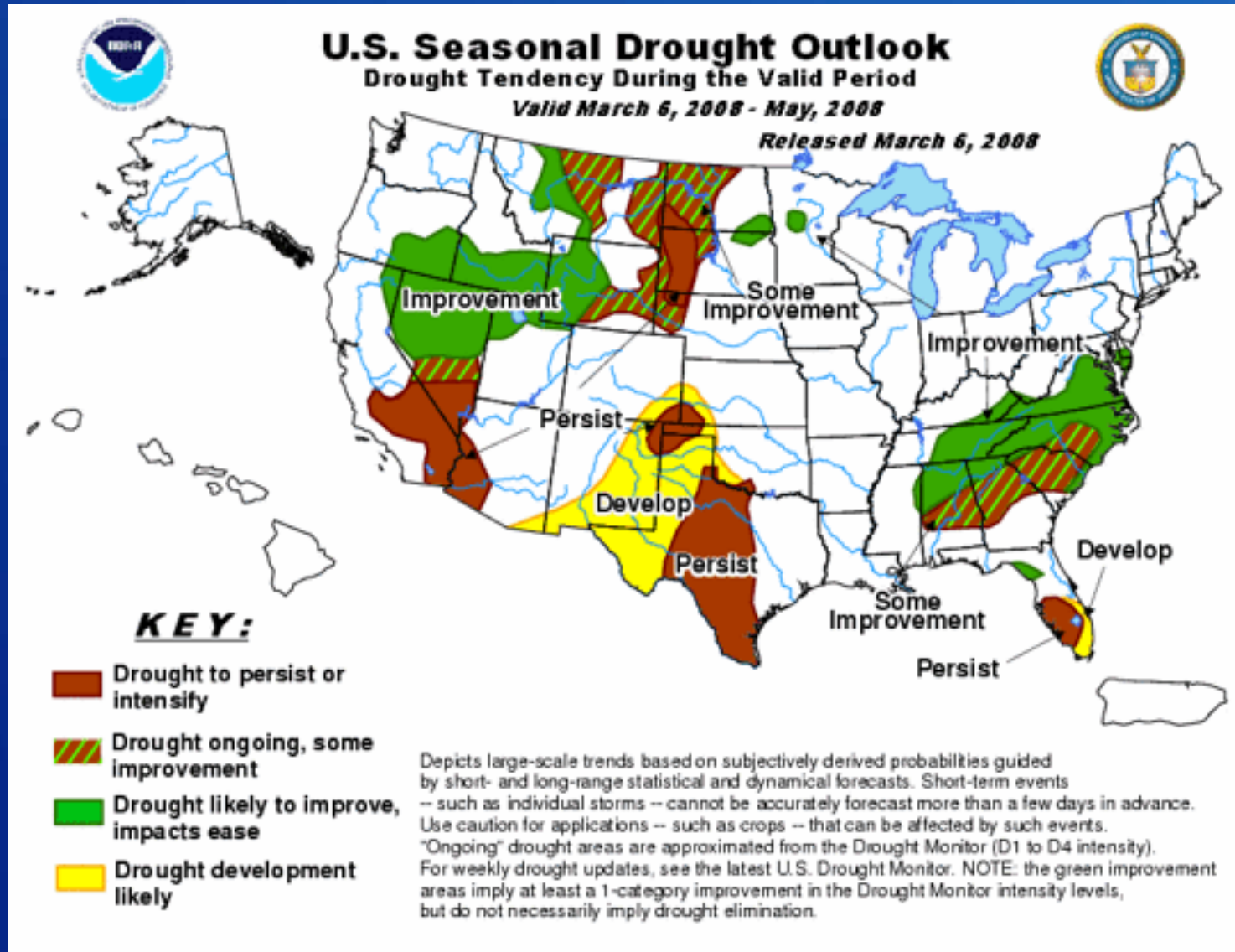


Released Thursday, March 6, 2008

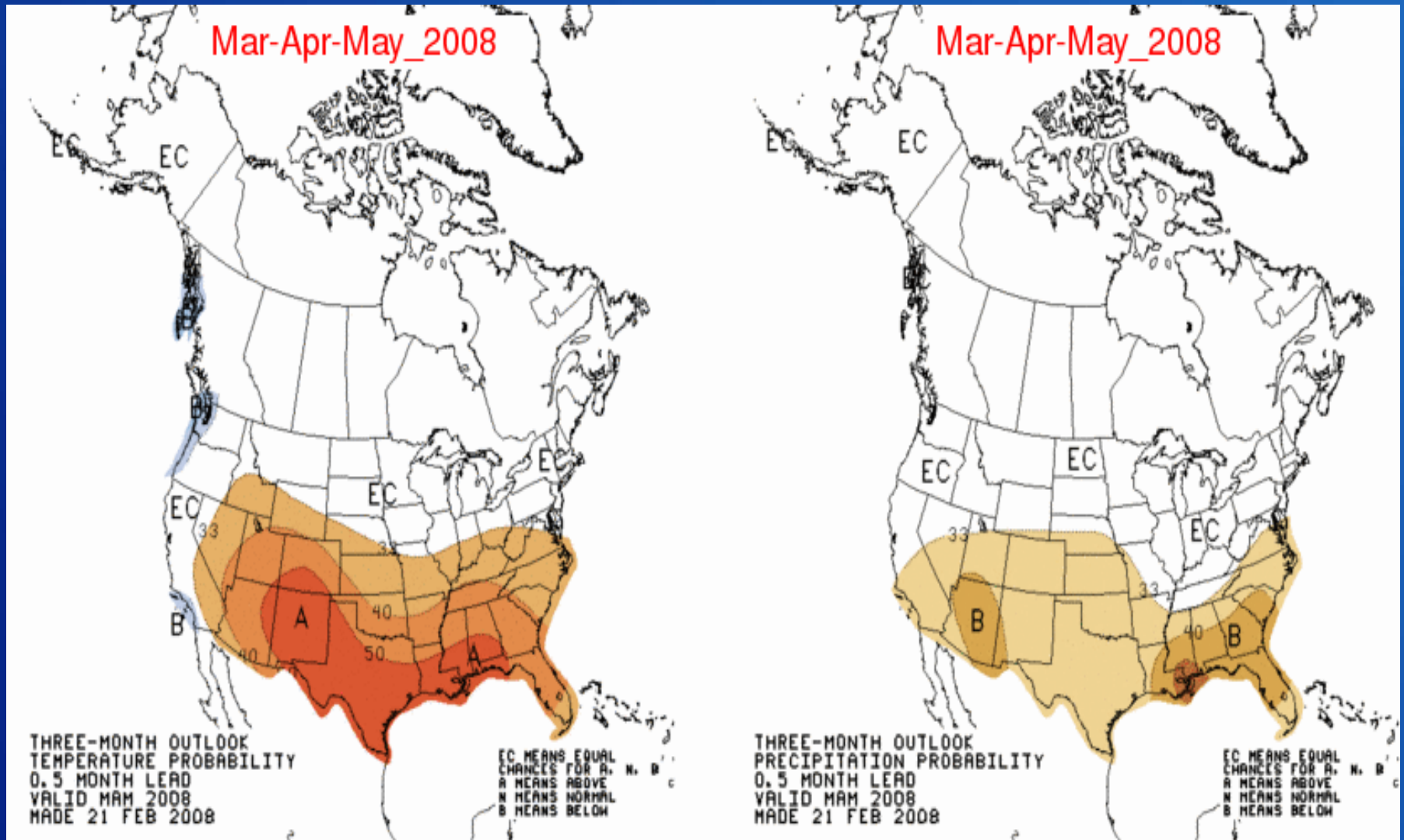
Author: Brian Fuchs, National Drought Mitigation Center

RECLAMATION

Seasonal Drought Outlook – Through May



Weather Outlook – April, May, and June



RECLAMATION

CURRENT CONDITIONS

March 10, 2008

BIGHORN LAKE CONDITIONS

Elevation

3616.4 ft – 23.6 feet below full pool

1.3 feet above average

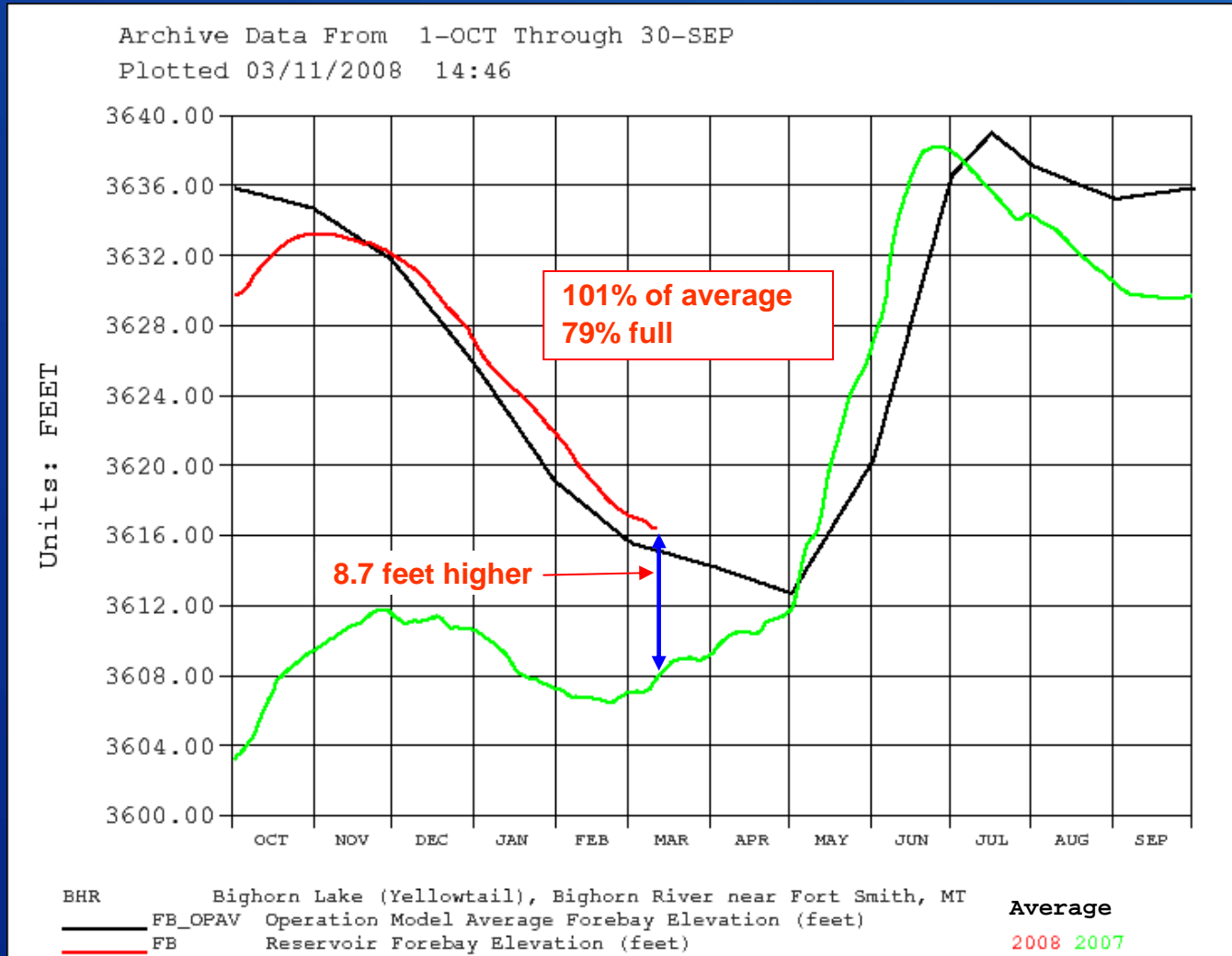
Storage

846,800 af – 101% of average & 79% full

RECLAMATION

BIGHORN LAKE CURRENT CONDITIONS

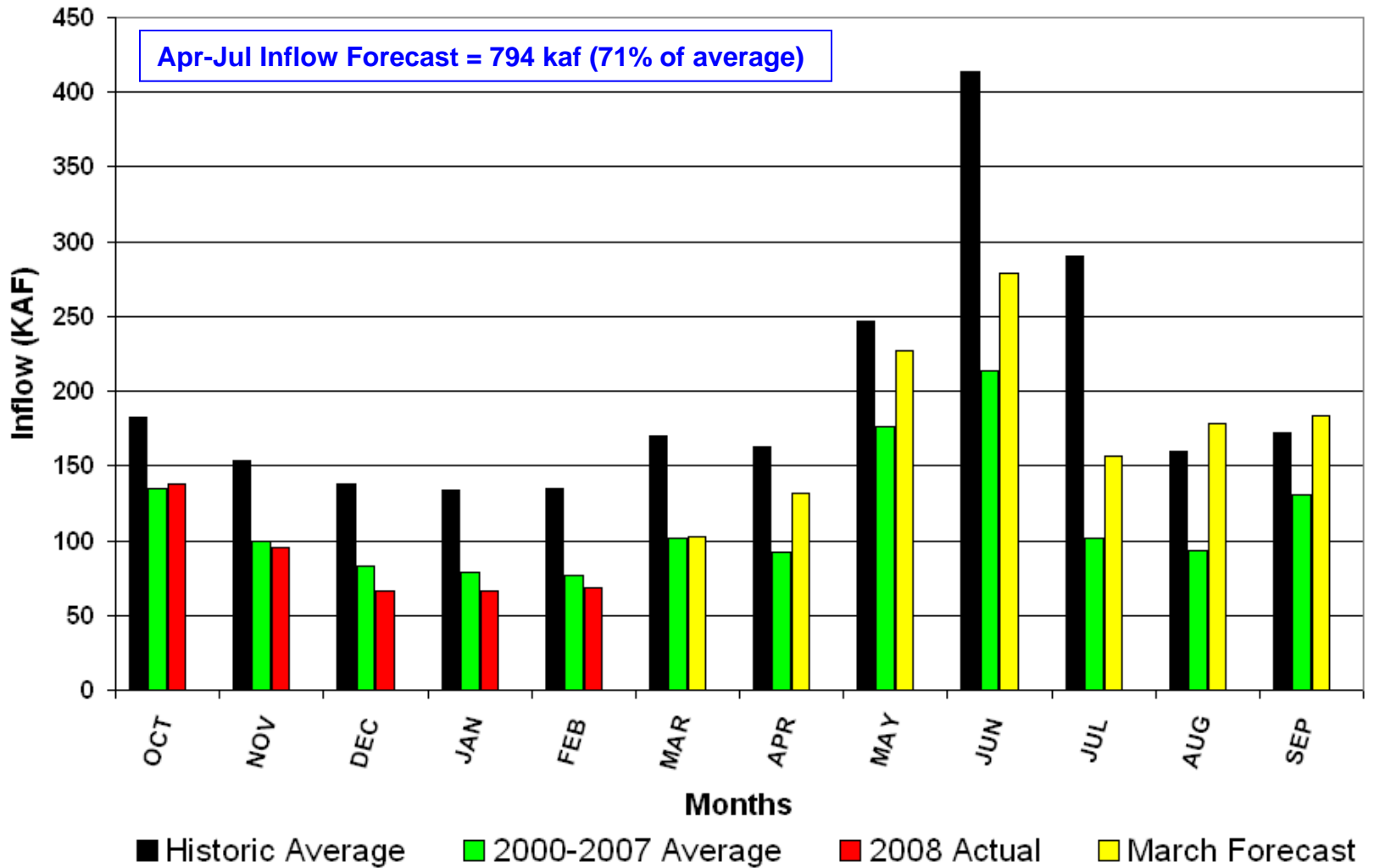
Bighorn Lake Storage Conditions – March 10, 2008



Water Supply Forecasts

- Reclamation monitors snowpack data each month from mid-October through June
- **Snowpack Accumulations**
 - January 1 – 45% on the ground
 - February 1 – 61% on the ground
 - March 1 – 75% on the ground
 - April 1 – 93% on the ground
 - April 15 – 100% on the ground
 - May 1 – 99% and generally melting out
- This time of year, monthly plans are adjusted as appropriate, based primarily on snow & precipitation information
- Significant changes to operation plans may be required as we approach and are into the spring runoff season
- Fall forecasts are heavily dependent upon statistical information and analysis

Bighorn Lake Inflows



Bighorn Lake April-July Inflow Projections

Minimum Probable Inflow

90% chance of exceedence (535,000 af @ 48% of average)

Maximum Probable Inflow

10% chance of exceedence (1,278,000 af @ 115% of average)

Most Probable Inflow

50% chance of exceedence (794,000 af @ 71% of average)

* 2007 Actual April-July Inflow

614,100 af @ 55% of average

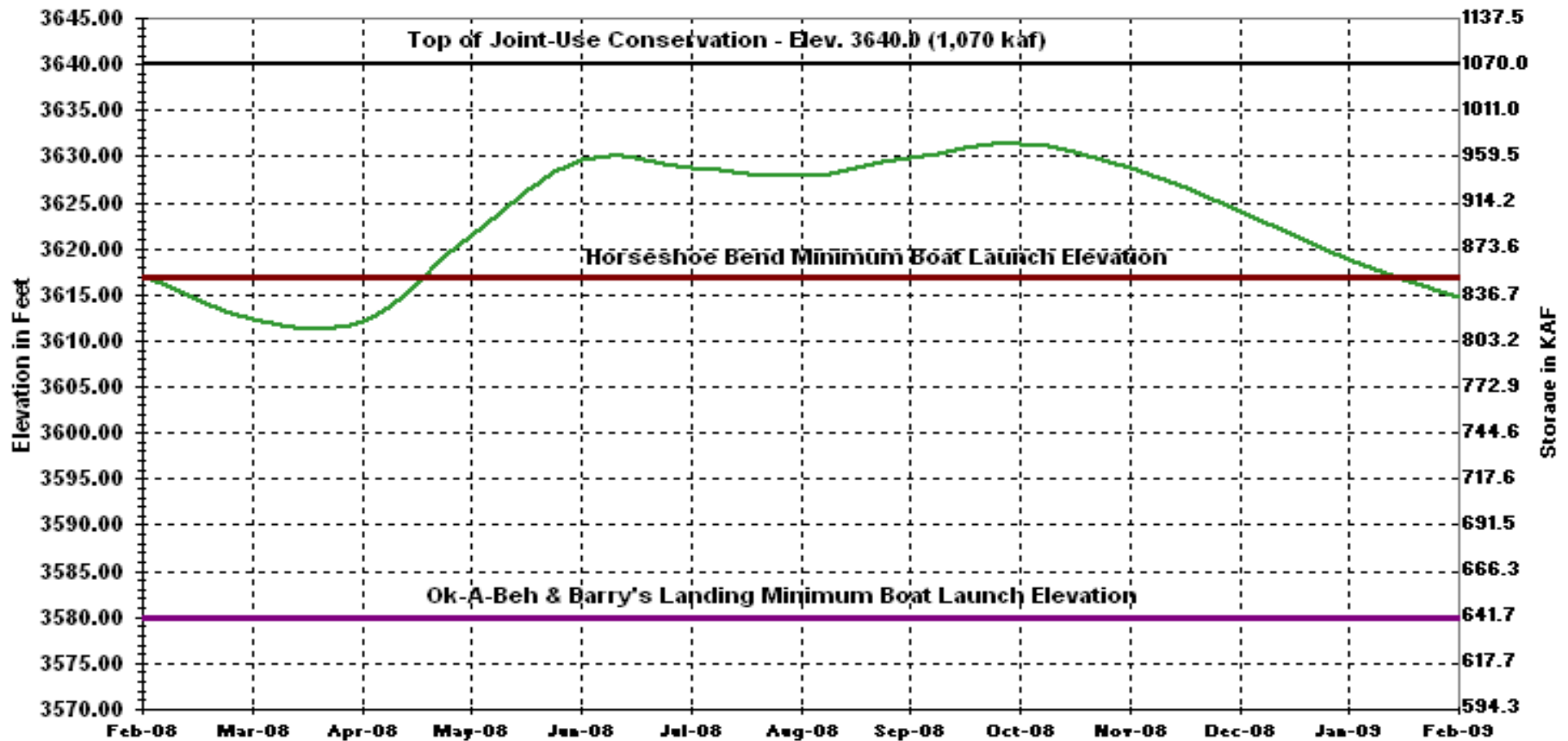
RECLAMATION

Minimum Probable Runoff Scenario

- Fill by June/July if possible
- Maximize storage during summer & fall
- Meet end of March target storage level
- Avoid dropping storage during April & May
 -
 -
- Release 1,500 cfs through October
- Release 1,900 cfs during October through March to reach elevation 3614 by end of March
- Option to increase spring & summer flows in exchange for decreasing fall & winter
- Generate 491.0 GWHrs

Bighorn Lake Operation Based on Minimum Probable Inflow

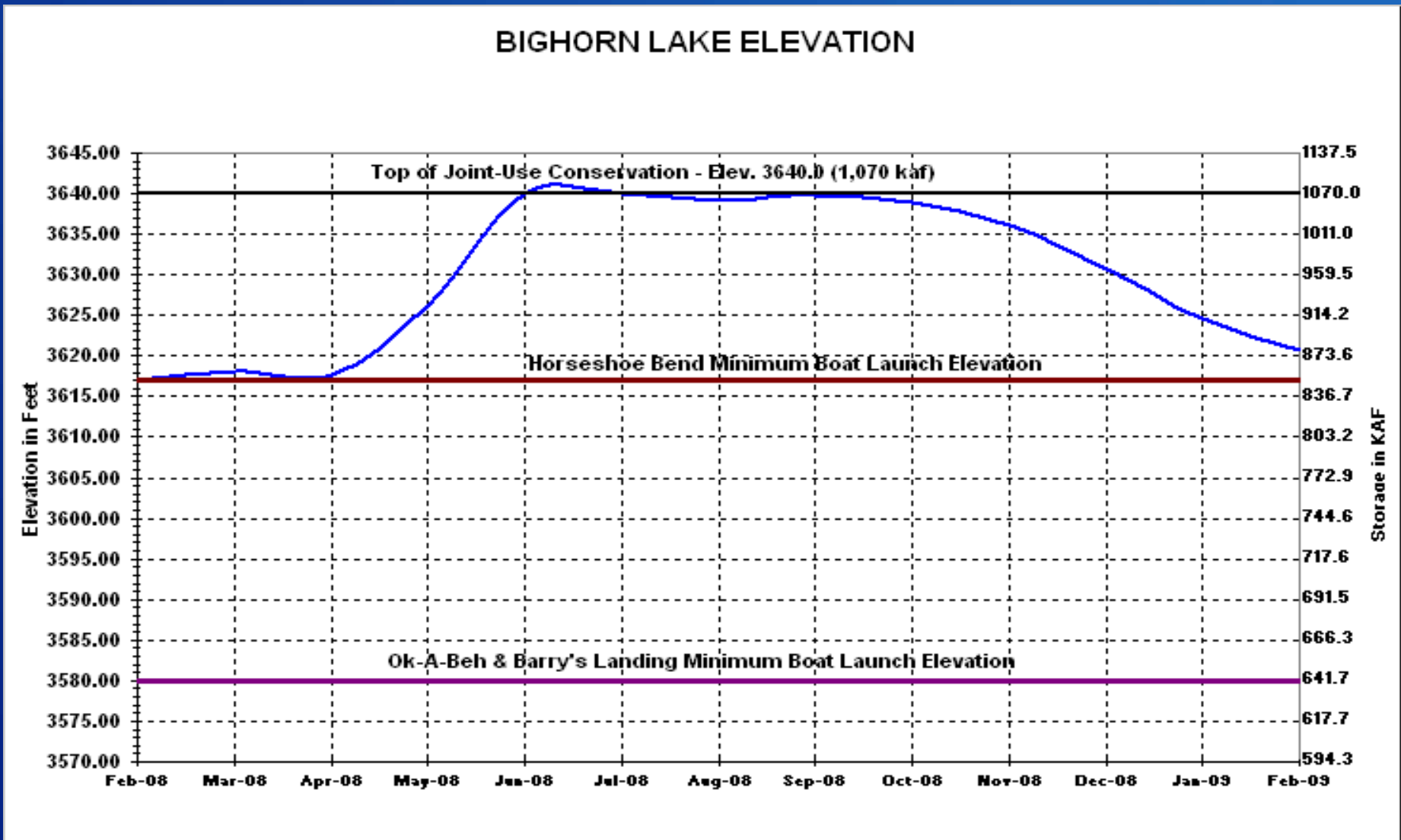
BIGHORN LAKE ELEVATION



Maximum Probable Runoff Scenario

- Fill by June/July if possible
- Maximize storage during summer & fall
- Stay out of exclusive flood pool
- Limit release to 4,500 cfs to maintain power peaking capability
- Meet end of March target storage level
- Avoid dropping storage during April & May
-
-
- Release 2,500-5,700 cfs during April through July
- Release 3,200 cfs during August through February
- Generate 1,010.7 GWHrs

Bighorn Lake Operation Based on Maximum Probable Inflows

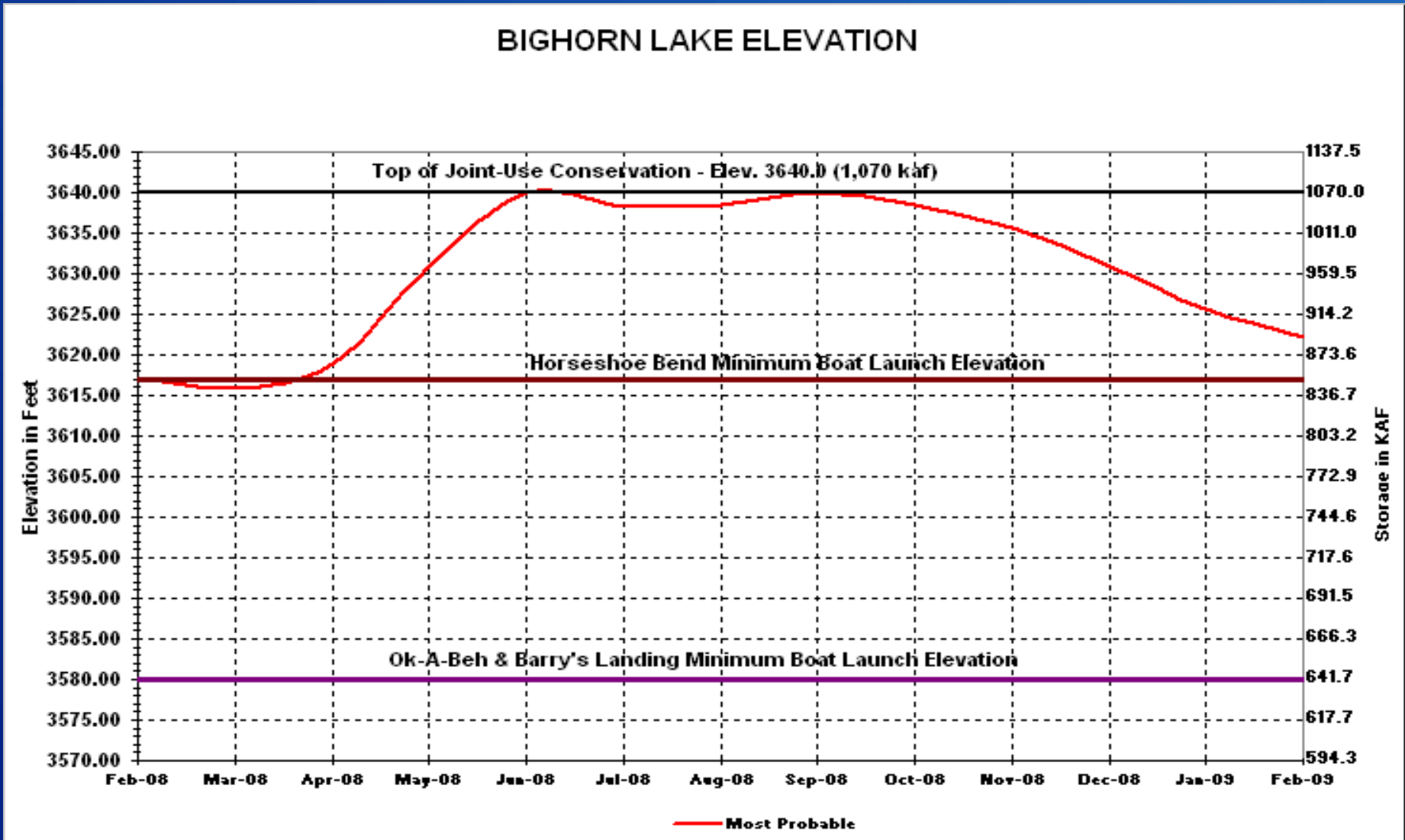


RECLAMATION

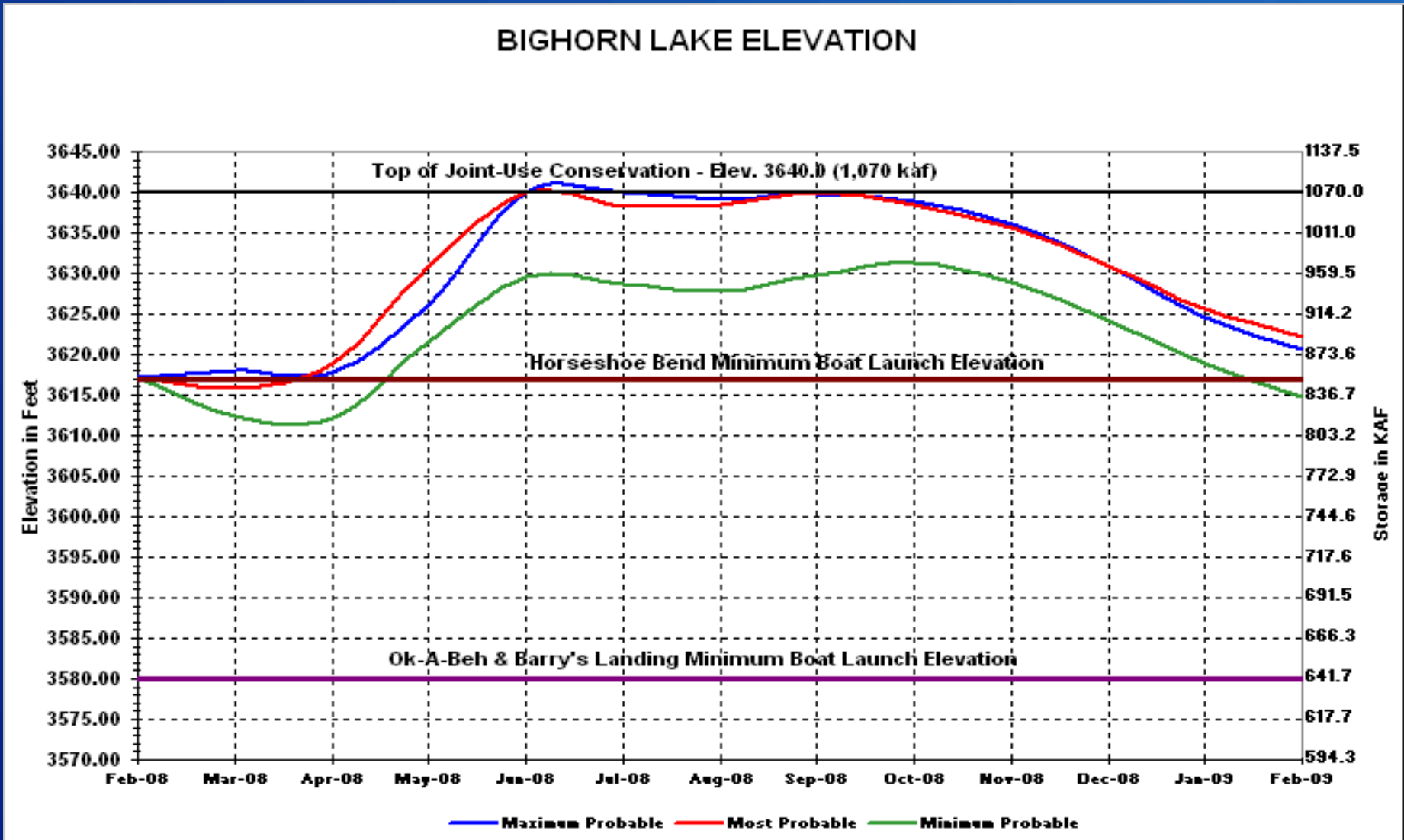
Most Probable Runoff Scenario

- **Fill by June/July if possible**
- **Maximize storage during summer & fall**
- **Stay out of exclusive flood pool**
- **Meet end of March target storage level**
- **Avoid dropping storage during April & May**
- **Release 1,900 cfs through May**
- **Release 2,500 cfs during summer, fall, & winter**
- **Generate 708 GWHrs**

Bighorn Lake Operation Based on Most Probable Inflows



Bighorn Lake Operation-Max., Min., & Most Probable Inflows



Reclamation's Internet Website

<http://www.usbr.gov/gp/water/>

- near real-time data available through the HYDROMET data system
- summaries and plots of historical data
- annual reservoir operating plan publication
- monthly water supply reports
- project data
- snow plots
- links to related internet sites

RECLAMATION

- **Discussion & Comments**

RECLAMATION

Comments ?

The information presented at this meeting can be found on the Montana Area Office website at:

www.usbr.gov/gp/mtao/yellowtail/index.cfm.

Please mail comments to:

Ms. Paula A. Holwegner

Bureau of Reclamation

P.O. Box 30137

Billings, MT 59107-0137

fax your comments to:

406-247-7338

or email your comments to:

pholwegner@gp.usbr.gov

by **April 4, 2008**

RECLAMATION