

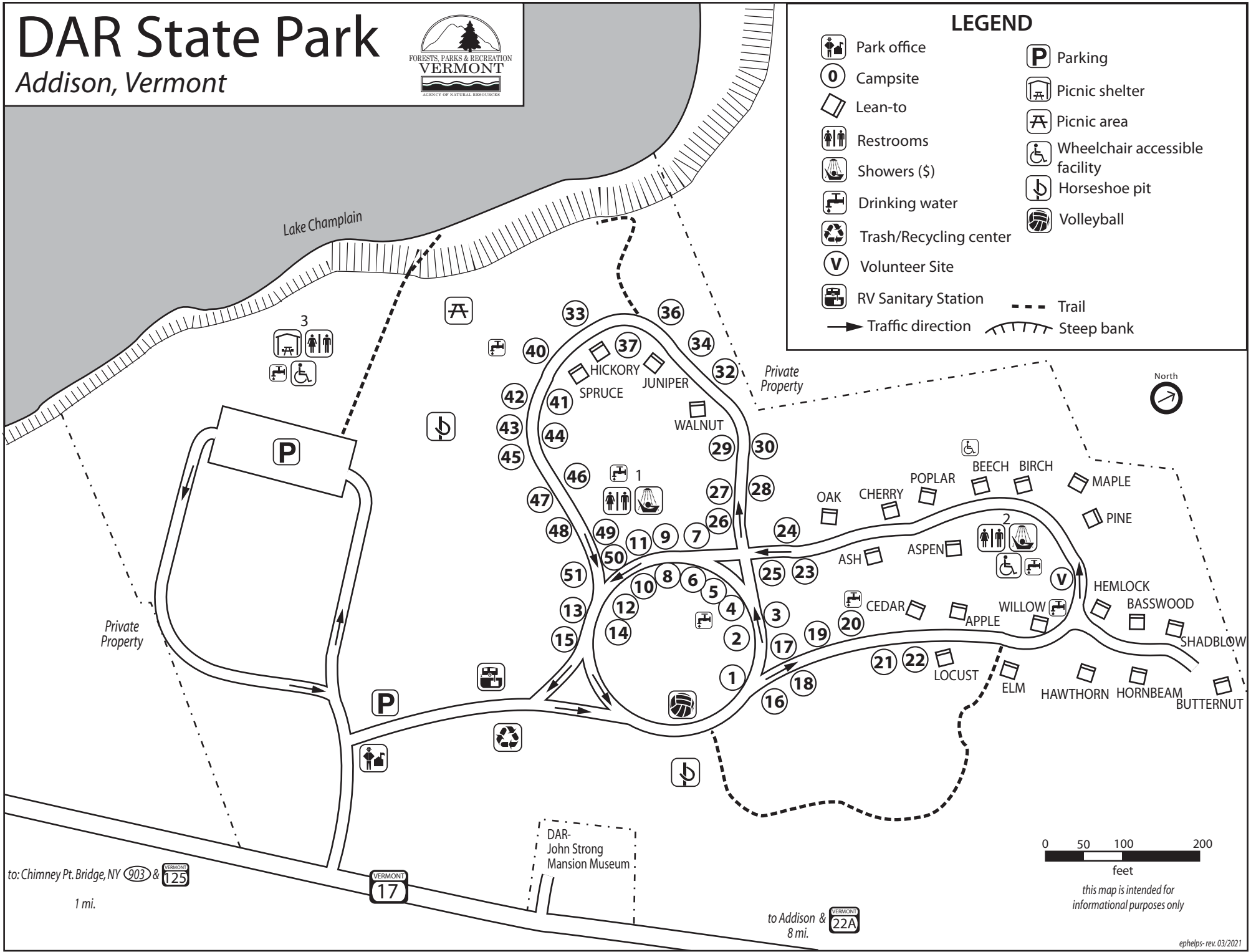
# DAR State Park

Addison, Vermont



## LEGEND

- Park office
- Campsite
- Lean-to
- Restrooms
- Showers (\$)
- Drinking water
- Trash/Recycling center
- Volunteer Site
- RV Sanitary Station
- Parking
- Picnic shelter
- Picnic area
- Wheelchair accessible facility
- Horseshoe pit
- Volleyball
- Trail
- Steep bank
- Traffic direction

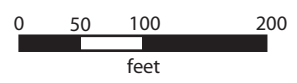


to: Chimney Pt. Bridge, NY 903 & 125  
1 mi.



DAR John Strong Mansion Museum

to Addison & 8 mi. 22A



this map is intended for informational purposes only

## D.A.R. State Park

Welcome to D.A.R. State Park. With its picturesque setting on the shores of Lake Champlain, the park provides an ideal setting for anyone seeking a relaxing day visit or an overnight respite. A quiet park, it is popular for its large, open campground, grassy picnic areas and stone pavilion. It is a favorite spot for birdwatchers and provides access to Lake Champlain and an excellent fishery.

D.A.R. is located in the contemporary rural agricultural community of Addison. This area is one of the earliest settled parts of Vermont, with evidence of human habitation dating back over 7,500 years. Native Americans regularly used the area for camping, hunting and fishing for as long as 7,000 years until Euro-American settlers arrived.

After the first Europeans arrived in 1609, the area was important for interactions between Europeans and the native people. In 1690, the English used it to watch for their French enemies on Lake Champlain. In 1731, the French took a stand here by building a fort to keep the English out of the lake and blocking their easy access to Canada. This was a frontier of New France, with the first long-term French settlement in the region. This site saw much military activity during the French and India War and the American Revolution.

After the English won control of the area in 1760, English settlers began to arrive and build homesteads. John Strong is believed to have built a cabin on top of a former French home site. The foundation is visible just north of the park picnic pavilion. Strong's cabin was burned in 1790 by loyalist British forces after which time Strong built the imposing brick mansion near the park entrance. The Daughters of the American Revolution (D.A.R.) purchased the property in 1934 and turned it into a museum depicting early colonial life. In 1955, the D.A.R. donated 95 acres to the State of Vermont for creation of D.A.R. State Park.

### D.A.R. State Park amenities:

- 47 tent/trailer sites
- 24 lean-to shelters
- Lake Champlain shore access
- Picnicking and group events
- Firewood for sale

### Recreating and sightseeing in the area:

#### **Addison**

- John Strong Mansion Museum
- Chimney Point Historic Site
- Dead Creek Wildlife Management Area
- Snake Mountain Wildlife Management Area

#### **Middlebury**

- Henry Sheldon Museum of Vermont History
- Downtown Marbleworks District
- Middlebury College
- University of Vermont Morgan Horse Farm

#### **Vergennes**

- Button Bay State Park
- Lake Champlain Maritime Museum

#### **New York State**

- Crown Point State Historic Site
- Fort Ticonderoga National Historic Landmark

#### **Ferrisburgh**

- Kingsland Bay State Park
- Rokeby Museum

#### **Orwell**

- Mt. Independence State Historic Site

### For more information, contact:

**D.A.R. State Park  
6750 VT Route 17W  
Addison, VT 05491**

**(802) 759-2354 (operating season) OR  
VT State Parks Reservation Center  
(888) 409-7579**

**Monday- Friday 9:00 am-4:00 pm  
[www.vtstateparks.com](http://www.vtstateparks.com)**

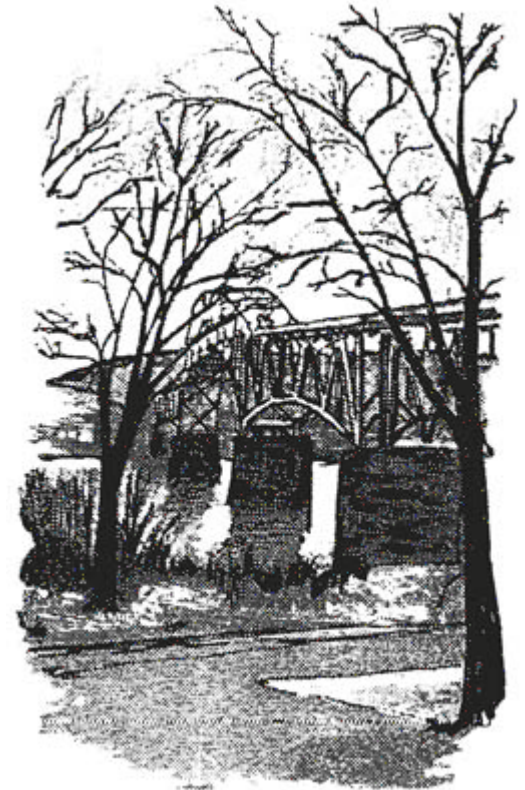


To request this publication in Braille or alternate visual format, please contact [parks@vermont.gov](mailto:parks@vermont.gov)  
VT TDD Relay Dial 7-1-1  
Printed on recycled paper.  
03/2019

---

---

# D.A.R. State Park Map & Guide



### **Memorial Day Weekend- Labor Day**

Camping  
Picnicking  
Group Events  
Fishing

---

---