

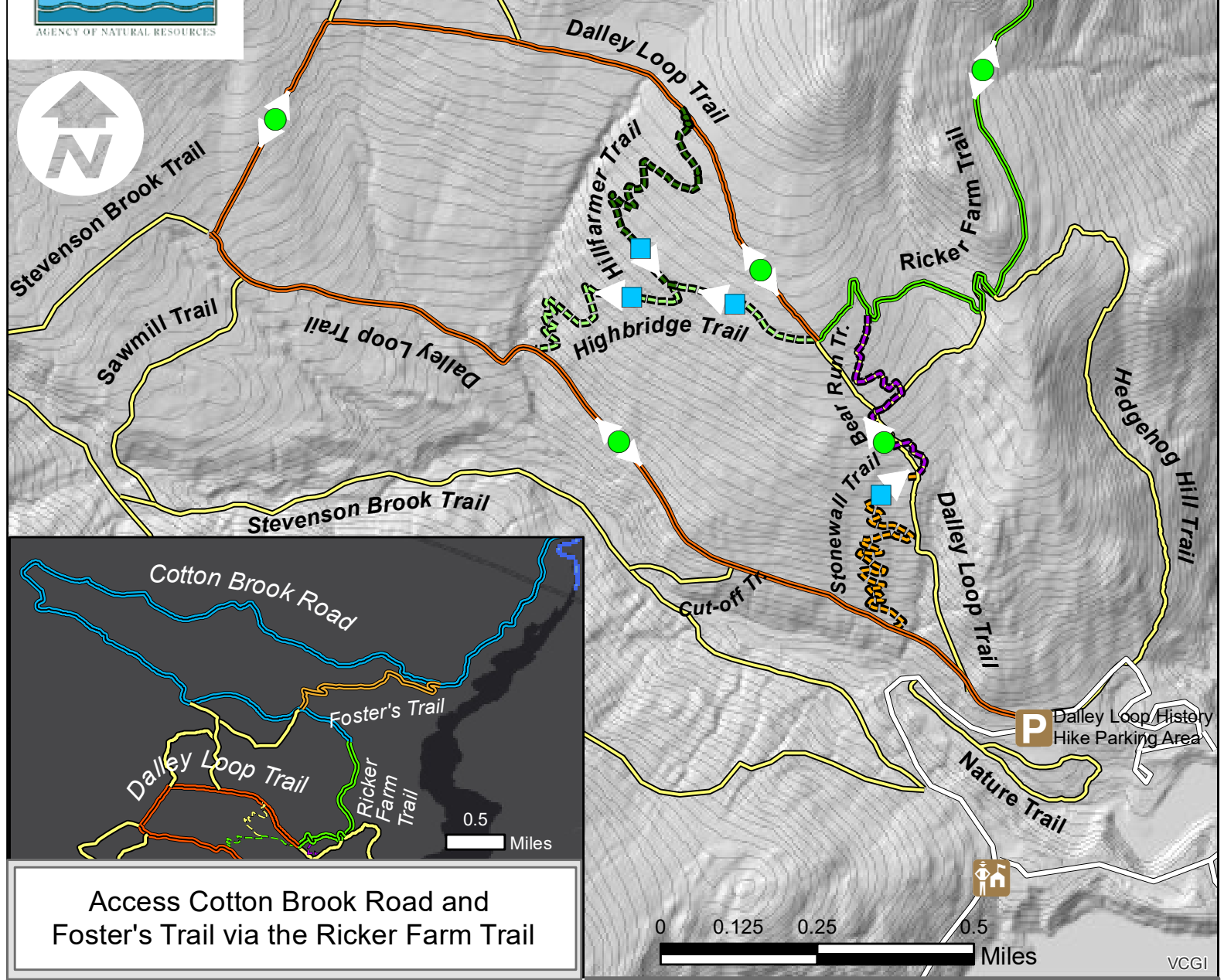


WATA

waterbury area trail alliance

LITTLE RIVER STATE PARK MOUNTAIN BIKE TRAIL NETWORK

3444 Little River Rd. Waterbury, VT 05676 Park Phone: (802)244-7103



Access Cotton Brook Road and Foster's Trail via the Ricker Farm Trail

LEGEND

- Single Track
- Double Track (Multi-use)
- Hiking Trails ONLY
- Park Roads
- Main Parking Area for Mountain Bike Trail Network
- Direction of Travel
- Beginner Trail
- Intermediate Trail

DOUBLE TRACK YIELD CHART



PEDESTRIANS YIELD TO BIKES ON DOWNHILL SINGLE TRACK

ONLY RIDE DESIGNATED MOUNTAIN BIKE TRAILS. TRAILS ON CAUTION REQUIRE YOU TO GET OFF YOUR BIKE AND WALK ALL WET AREAS. DOUBLE TRACK MOUNTAIN BIKE TRAILS ARE MULTIPLE-USE: YIELD TO PEDESTRIANS AND HORSES. PEDESTRIANS YIELD TO MOUNTAIN BIKES ON DOWNHILL SINGLE TRACK. TRAILS OPEN 10AM TO SUNSET APRIL 15-NOVEMBER 2 PLEASE REPORT ANY TRAIL ISSUES TO PARK STAFF. TO REPORT AN EMERGENCY CALL 911.

Ride Safe and Have Fun!

Trail Conditions and Open/Closed Status are posted on Trailforks. Be sure to check the link below before heading out to the park: www.trailforks.com/region/little-river-state-park-16188/

Trails are maintained through a collaborative partnership between the Department of Forests, Parks, and Recreation and the Waterbury Area Trails Alliance (WATA). To support these efforts consider becoming a WATA member (www.waterburytrails.com) and/or volunteering.