

The Vista Trail

1.0 mile from Scout Camp Rd to Vista & return
40 minutes, moderate difficulty, blue blazes

The trail begins on the old logging road next to Birch Cottage. Follow the roadway 0.1 mile; then look for blue blazes on the left and turn. Follow this footpath until it intersects with another logging road. Bear left and continue through the cemetery. The trail climbs steeply to a vista of Echo Lake and Camp Plymouth State Park. Return by the same route.

Your walk will take you through a white pine forest where goldenrod and aster grow alongside the road in summer months. You may see the shiny leaves of trailing arbutus and wintergreen closer to the ground. The trail passes through a young forest with birch, beech and aspen trees. Further up, the dry slopes support red oaks and red spruce. Along the way, look for signs of white-tailed deer, snowshoe hare, red squirrel and fisher. Many kinds of birds inhabit this forest, such as the ruffed grouse, barred owl, northern oriole, black and white warbler and hermit thrush.



trailing arbutus

Camp Plymouth State Park

Welcome to Camp Plymouth State Park, 295 acres of state lands on the shores of Echo Lake in Plymouth, Vermont.

Camp Plymouth is rich in history from the birth of our nation right up to present day.

The Crown Point military road was authorized for construction in 1759 to connect strategic military posts at Fort # 4 in Charlestown, New Hampshire to Crown Point on Lake Champlain. The military road was instrumental in moving troops and supplies in both the French and Indian War and the American Revolution. Later, the road became an important route for commercial traffic. Today, Scout Camp Road follows part of the road's original route.

A farm was established on part of the property in the 1840s by Amos Pollard. One day in 1850, a young man was fishing in Buffalo Brook and discovered gold there. The man tried to keep his find a secret, but without success. By 1855, it was known as Gold Brook, and a commercial mining operation was set up. Up the stream at the now-abandoned village of Plymouth Five Corners, a mill and crusher were established, and many prospectors flocked to the area. One of the more successful operators, Rooks Mining Company, claimed to have earned more than \$13,000 in a 6-month period in 1884. Such profits were seldom validated, and most investors lost their fortunes. Mr. Pollard himself never had much to do with searching for gold. He died in 1874 and is buried in the nearby cemetery. When the Rooks Mining Company went bankrupt in 1889, Henry Fox, the superintendent, bought the mine. He continued to search for gold for thirty more years until his death in 1919. Today, remains of the mine operations can be seen along the brook, and although the most of the mines themselves are outside of park boundary, *for your safety stay away from all abandoned mines regardless of location.* Most of the gold is known as "placer" gold, deposited by glacial action. Recreational gold panning for personal enjoyment is allowed in Buffalo Brook, however no other methods or commercial operations are allowed.

In 1925, a girls' summer camp was established here and operated for two years. In 1927, the property was purchased by the Boy Scouts of America and turned into Camp Plymouth, for which the park is named. At its height, the scout camp included camping sites for

10 troops, a trading post, archery range, rifle range, water front, and ceremonial camp fire area. In 1984, the property was conserved with the assistance of the Ottauquechee Land Trust and conveyed to the State of Vermont. Park facilities were constructed over the next few years and Camp Plymouth State Park opened to the public in 1989.

Recreating at Camp Plymouth State Park

- Swimming
- Picnicking & Group Events
- Boat Rentals & Fishing
- Cottage Rentals
- Indoor Pavilion Rental for Groups
- Group Camping & Horse Camping
- Hiking
- Dogs allowed on leash except on beach or in cottages

Recreating & Sightseeing in the Area

- Hiking in Coolidge and Okemo State Forests
- Hiking & Auto Parkway-Mt Ascutney State Park
- Summer adventure centers at Okemo, Killington and Bromley resorts
- Coolidge State Historic Site, Plymouth Notch

For more information, contact:

Camp Plymouth State Park
2008 Scout Camp Road
Ludlow, VT 05149

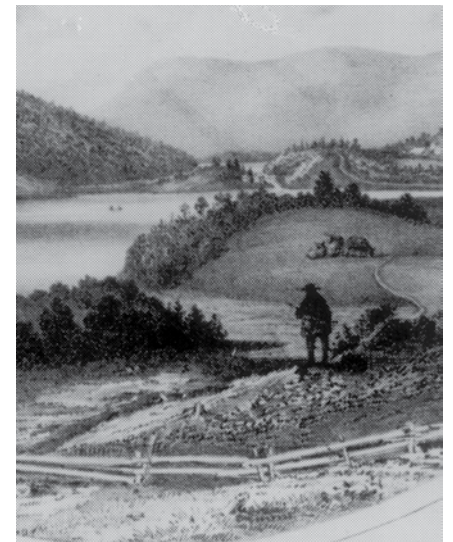
(802) 228-2025 (operating season)
OR

VT State Parks Reservation Center
(888) 409-7579 Mon - Fri 9 AM - 4 PM


AGENCY OF NATURAL RESOURCES
Department of Forests, Parks and Recreation
www.vtstateparks.com

To request this publication in Braille or alternate visual format, please contact parks@vermont.gov
VT TDD Relay Dial 7-1-1
Printed on recycled paper
12/2016-ERP

Camp Plymouth State Park Map & Guide



Echo Lake, circa 1860

Operating Season:
Memorial Day Weekend -end of September

Swimming
Picnic & Group Events
Group Camping
Cottage Rentals
