



PRIMITIVE CAMPING FACT SHEET

West Rutland State Forest

Many areas of state land are available for primitive or “no trace” camping and are open, free of charge, to the public. Primitive camping is done without the presence of developed facilities. The challenge for campers is to leave the area where they camp with no evidence of their visit.

West Rutland State Forest consists of 344 acres that has been in State ownership since 1913, making it one of our oldest State Forests. Located on the west side of Whipple Hollow, it is just 4.5 miles from the town of West Rutland. Access to the forest is by a 1-mile long gravel road beginning at the Whipple Hollow Road. The road is gated for the security of homes and camps on the road and access is by foot in the summer and by cross-country skis or snowshoe during the winter months.

At the entrance to the forest, the visitor will find plantations of red and white pine established between 1913 and 1916. The remainder of the forest features red oak, white ash, sugar maple, and paper birch. Several species of wildlife make their home here including white-tailed deer, gray squirrel, ruffed grouse, and wild turkey.

The Civilian Conservation Corps (CCC) played an important role in the development of the West Rutland State Forest. During the 1930s, the CCCs thinned the pine plantations and built the main access road as well as several interior access roads.

Primitive camping is allowed year round on this parcel of land; however, there is no available public parking.

Primitive camping is allowed only within designated areas of state land. Within these designated areas, camping must be at least 100 feet from any stream or body of water, 200 feet from any trail or property line, and 1,000 feet from any traveled road. Camping is limited to three consecutive days in any location. Groups of 11 or more individuals must obtain a permit from the district office. State forest boundaries are marked with orange paint. Parking lots and access roads are **not plowed** during the winter.

Only dead and down trees or branches may be used for firewood. Remove all evidence of campfires before leaving the site. Human waste should be buried at least 100 feet away from any stream or body of water.

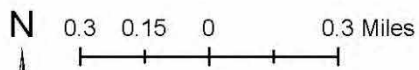
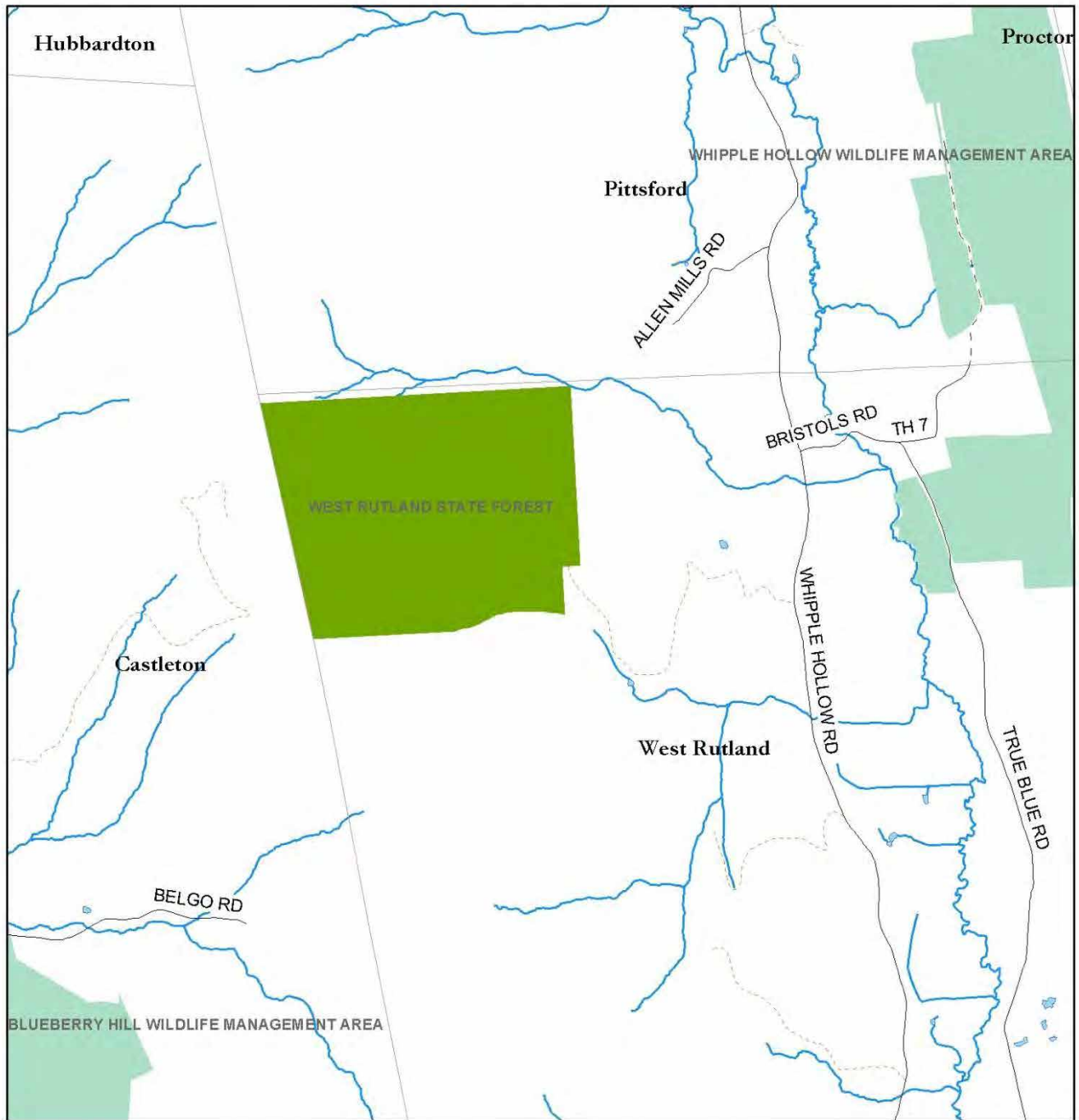
Forest management activities occur periodically on West Rutland State Forest. Contact the District Office to check out scheduled timber sale activity.

Please carry out all that you carry in!

For more information, contact the district office:



Vermont Agency of Natural Resources
Department of Forests, Parks and Recreation
271 North Main Street, Suite 215 • Rutland, VT 05701-2423
Telephone: (802) 786-0060 | Fax: (802) 786-3870 | <http://www.vtfpr.org>



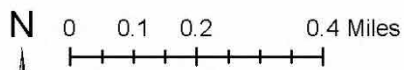
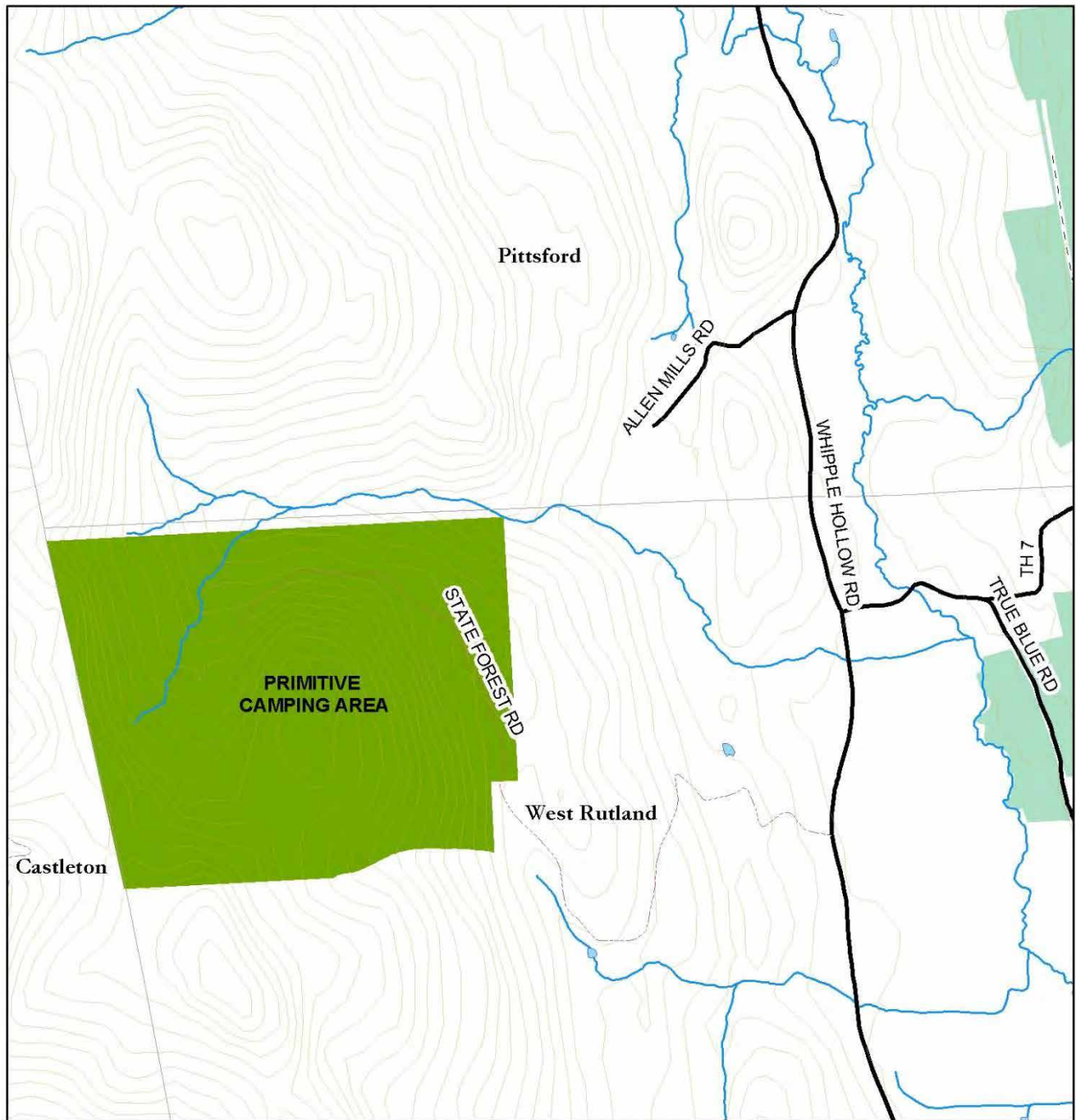
Scale: 1 inch equals 0.39 miles

MAP NOT SURVEY ACCURATE
FOR PLANNING PURPOSES ONLY

WEST RUTLAND STATE FOREST

PRIMITIVE CAMPING - LOCATOR MAP

WEST RUTLAND, VERMONT



Scale: 1 inch equals 0.27 miles

MAP NOT SURVEY ACCURATE
FOR PLANNING PURPOSES ONLY

WEST RUTLAND STATE FOREST

PRIMITIVE CAMPING AREAS

WEST RUTLAND, VERMONT