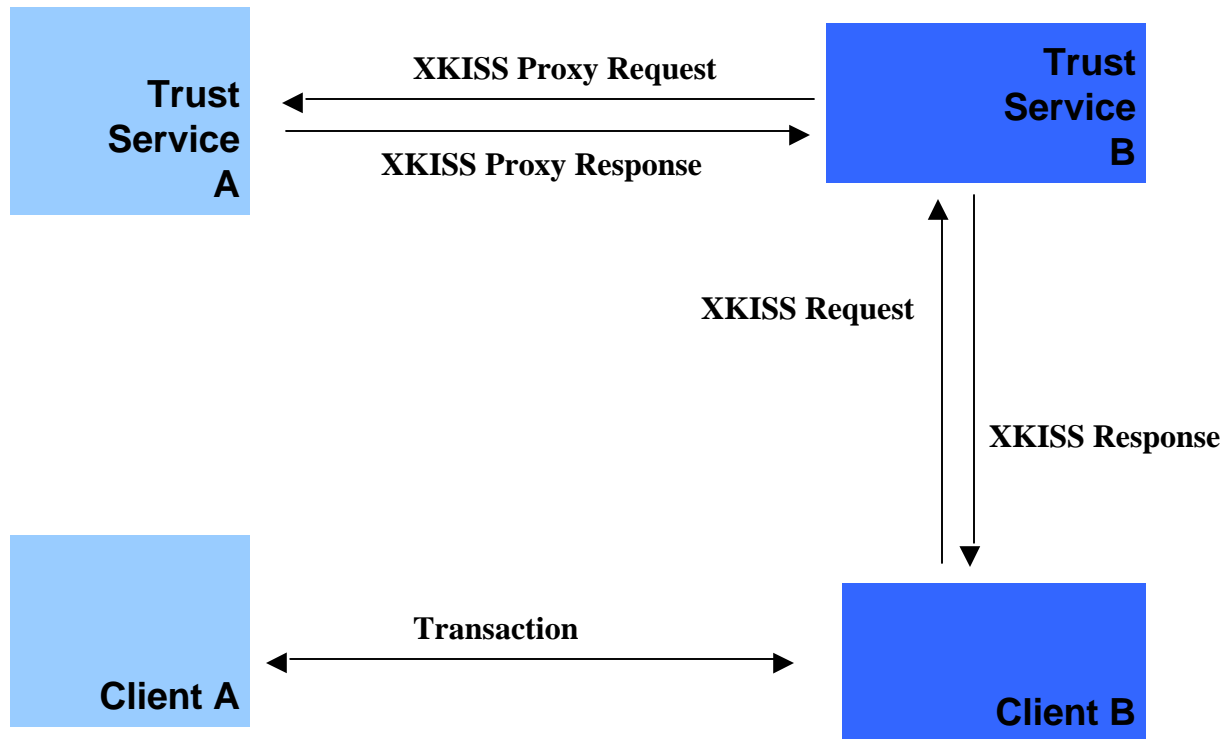


# The Four-Corner Model



- Client B sends a XKISS *Validate* request to Trust Service B to establish the trustworthiness of the private key used by Client A.
- Trust Service B proxies the request to Trust Service A since Trust Service A maintains the trust information regarding Client A. Note: The trust relationship between Trust Service A and Trust Service B does not need to have any relation to that between Trust Service B and Client B
- Trust Service A sends XKISS response to Trust Service B
- Trust Service B send XKISS response to Client B