



# PARKERSBURG - NEW HARTFORD, IOWA EF-5 TORNADO

May 25, 2008

43 Mile Damage Track

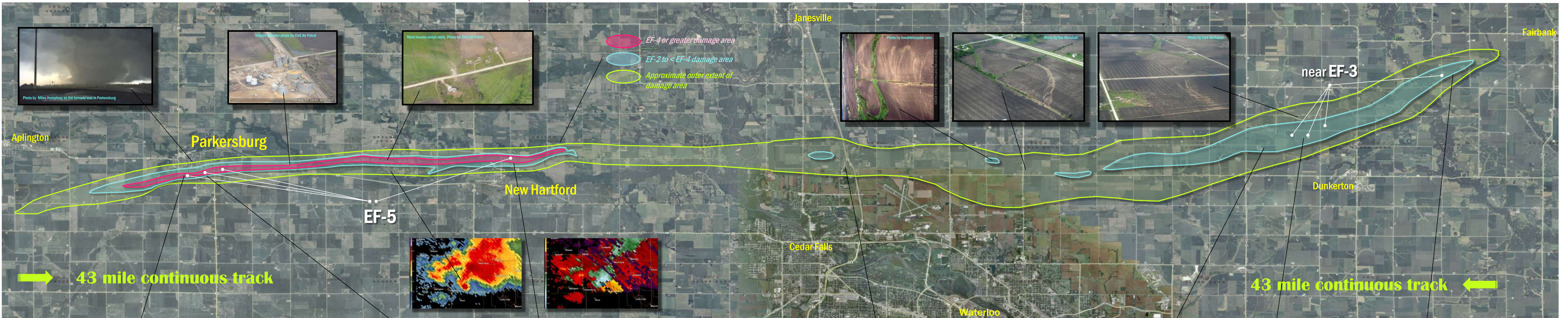
National Weather Service - Des Moines, Iowa



12 mile path EF4+



11 mile path EF2



43 mile continuous track

43 mile continuous track



The most severe destruction in Parkersburg occurred south of the tornado core, which tracked directly over the First State Bank (left photo). Several fatalities occurred in the neighborhood of the center photo, as floors were swept away exposing basements. Mature trees were reduced to debarked stubs. The high school (right photo, Getty Images) received EF2-3 damage.



Mud splattered houses and poles were common WNW of Dunkerton, with most out-buildings flattened. This damage was in the EF1-2 range. NWS survey team photo.



Damage on Adams Rd between Dunkerton and Fairbank was high-end EF2. The house at the farm on the left had several walls down. Photo from John McLaughlin, IowaHelicopter.com



Aerial photos from the Civil Air Patrol and IowaHelicopter.com show the path of the destruction through south and east Parkersburg. Damage was EF4-5 at the core of the track.

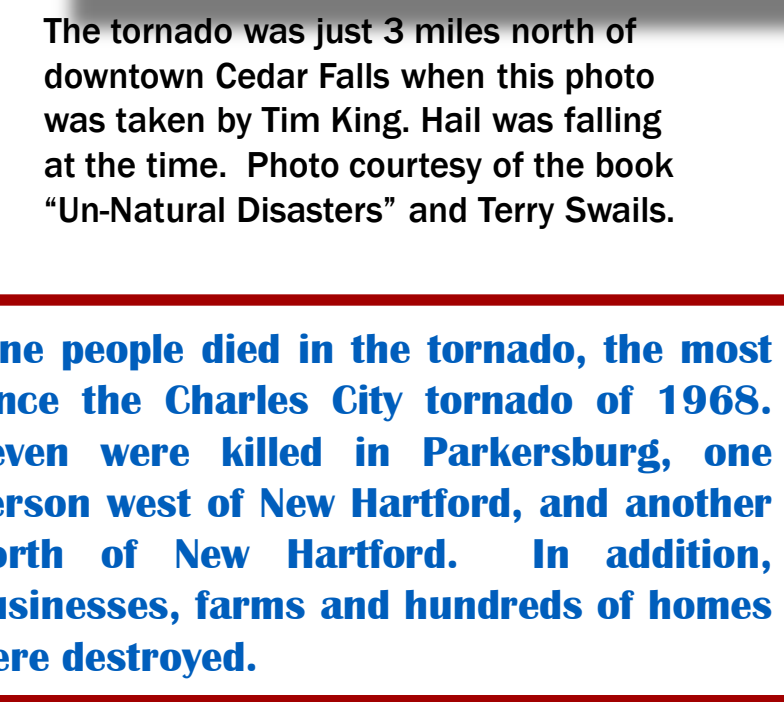


Size and distribution of debris played a big role in determining the EF-5 rating. A quarter was placed here for reference. NWS survey photo.

North of New Hartford, a woman was killed as her home was swept away. Only vehicle frames and tree trunks remained. Even the basement was cleared. The tornado was rated EF-5 at this location. The New Hartford cemetery is in the background. NWS survey photos.



**Nine people died in the tornado, the most since the Charles City tornado of 1968. Seven were killed in Parkersburg, one person west of New Hartford, and another north of New Hartford. In addition, businesses, farms and hundreds of homes were destroyed.**



The tornado was just 3 miles north of downtown Cedar Falls when this photo was taken by Tim King. Hail was falling at the time. Photo courtesy of the book "Un-Natural Disasters" and Terry Swails.



Damage on Lester Rd northwest of Dunkerton approached EF3 at several farm sites. Many hog confinement buildings were flattened. Here, hogs can still be seen in the building with some being loaded onto trucks. Civil Air Patrol photo.