



National Weather Service Des Moines

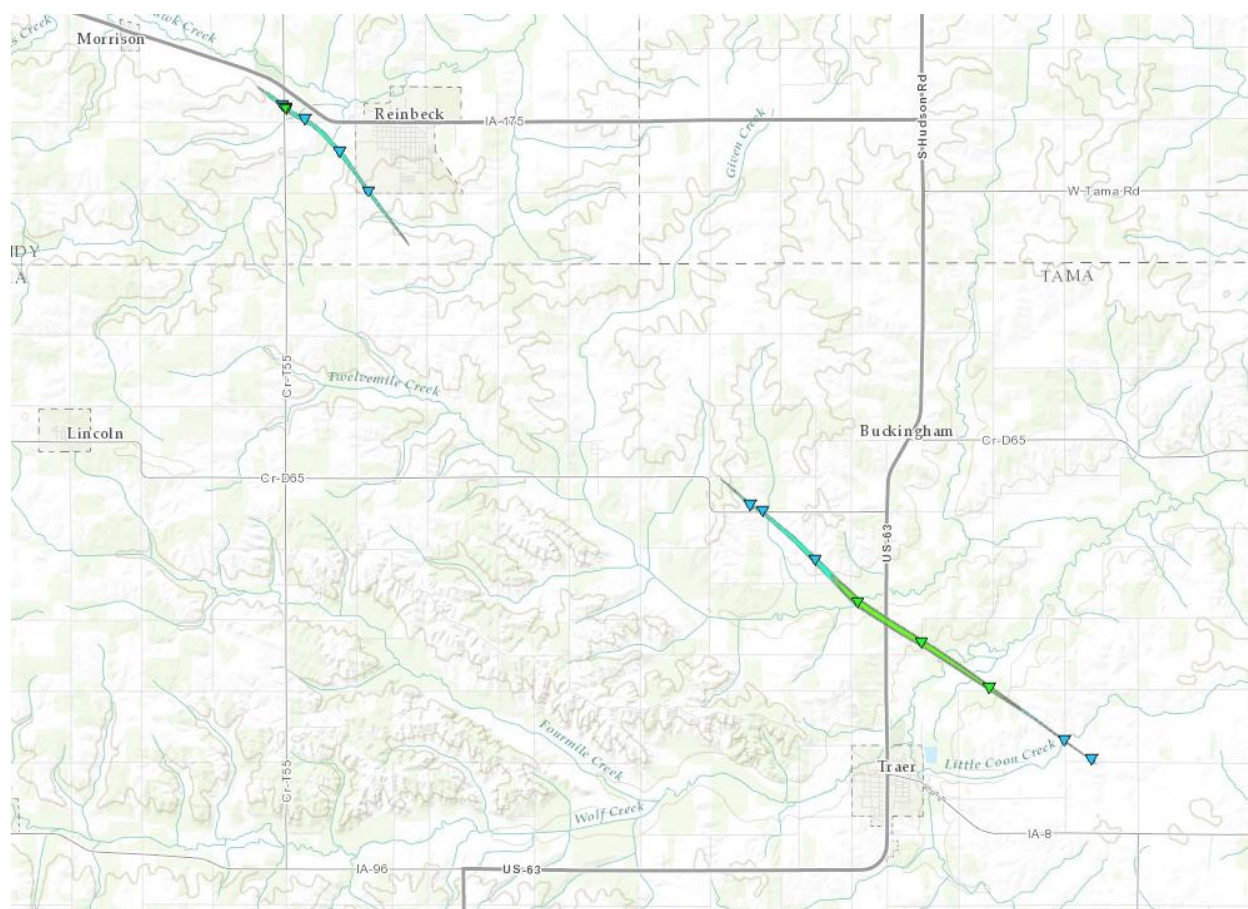
Storm Survey Results from July 6, 2014

For Grundy and Tama Counties



Overview:

On the afternoon and evening of July 6, a line of thunderstorms produced multiple tornadoes across central Iowa. The National Weather Service conducted surveys of the worst tornado damage in Tama and Grundy counties. The survey team found two tornado paths, both of which were rated an EF-1. The damage was mostly to crops but several structures were hit west of Reinbeck. At least three additional tornadoes have been confirmed via photo and video evidence from July 6 but were not surveyed. These were located near Jewell, southeast of Stuart, and in eastern Jasper County. Additional evidence on the estimated track and times the tornado was on the ground will be obtained and released in the coming days.



Overview map of the two tornado tracks in Grundy and Tama counties.

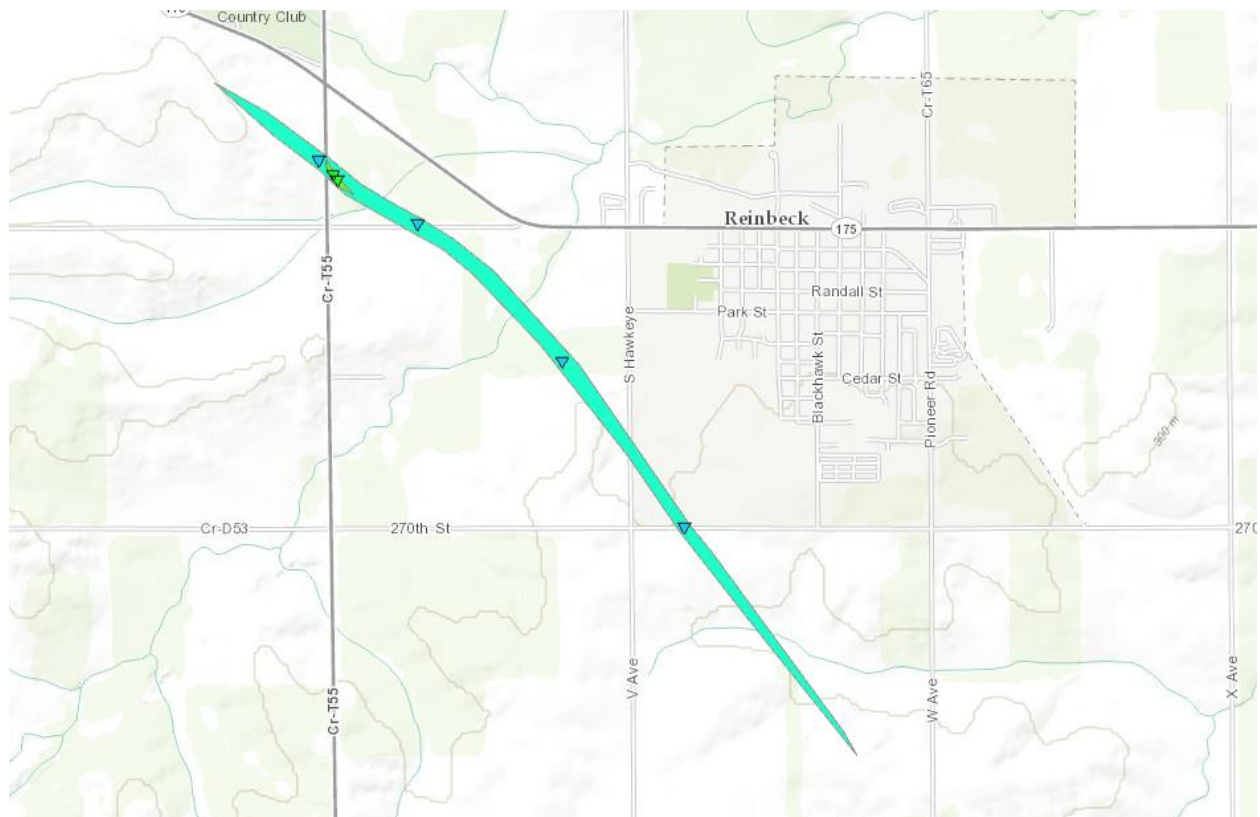
Survey Results for the Reinbeck Tornado:

The damage survey was conducted by NWS meteorologists. The intent of the survey was to document the damage and estimate the tornado's wind speeds. The detailed findings of the survey are listed below.

Tornado Strength: EF-1
Estimated Start Time: 7:58pm CDT
Start Location: 2 miles WNW of Reinbeck
Estimated End Time: 8:11pm CDT
Start Location: 1.7 miles S of Reinbeck

Peak Wind Speed: 100 mph
Path Length: 3.10 miles
Maximum Path Width: 100 yards
Injuries: 0
Fatalities: 0

Tornado Path:



Damage Photos:



Two houses early in the tornado's track sustained roof damage.

Survey Results for the Traer Tornado:

The damage survey was conducted by NWS meteorologists. The intent of the survey was to document the damage and estimate the tornado's wind speeds. The detailed findings of the survey are listed below.

Tornado Strength: EF-1
Estimated Start Time: 8:18pm CDT
Start Location: 1.8 miles ESE of Dinsdale
Estimated End Time: 8:35pm CDT
Start Location: 3.0 miles E of Traer

Peak Wind Speed: 90 mph
Path Length: 6.6 miles
Maximum Path Width: 200 yards
Injuries: 0
Fatalities: 0

Tornado Path:



Damage Photos:



Damage was primarily to crops and trees. The tornado produced impressive ground scouring.