

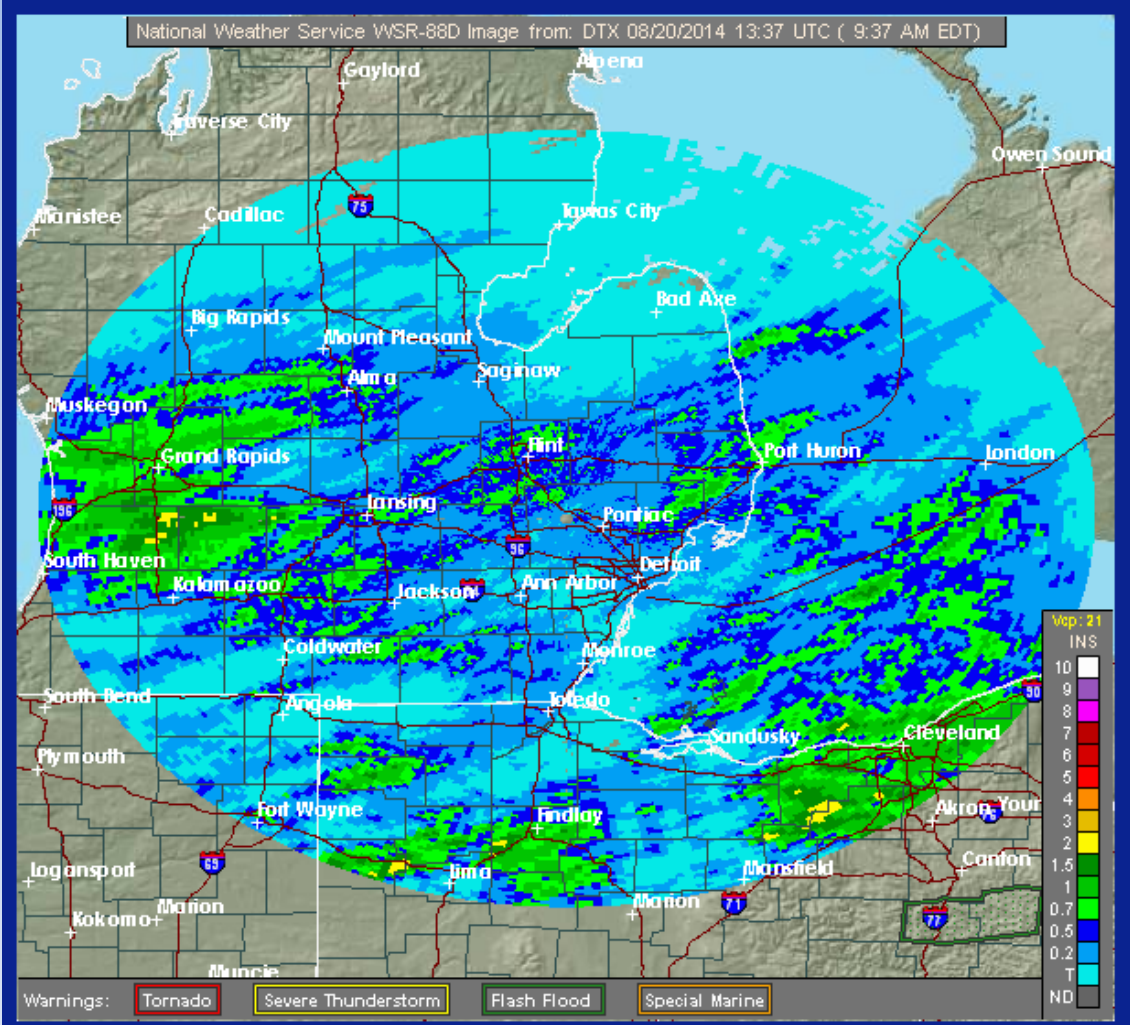
# August 19<sup>th</sup> 2014 Storm Summary

Thunderstorms moved into Southeast Michigan during the late afternoon hours of August 19th, producing sporadic wind damage (60 mph) as they traversed through the area. Small hail was also reported in a few spots. Rainfall rates were briefly intense, with some locations receiving over an inch in less than 2 hours.



*Pictures from NW Lenawee County, Killarney Highway just south of US-12 from a home on Allen Lake. Time was between 5:20 and 5:25pm.*

# [Click Here For Storm Reports](#)



*Storm Total Rainfall*