

U.S. NATIONAL WEATHER SERVICE

# EMWIN Image and Text Data Capture Catalog

---

Version 1.3b

# Document Control

Version Number	Version Description	Author(s)	Date Completed
V 0.1	Initial Document Draft	Gillespie	09/14/2016
V 1.0	Adds title page and Document Control page. Modifies the assigned product header and priority of the Atlantic and Eastern Pacific Basin Tropical Storm Products from NHC.	Gillespie	03/01/2017
V 1.1	Adds storm graphics “Atlantic Basin Tropical Storm [NHC] 3-Day Forecast Track and Current Winds” and “Eastern Pacific Basin Tropical Storm [NHC] 3-Day Forecast Track and Current Winds”	Banks	10/02/2017
V 1.2	Modified the URLs and filenames for Titles 22, 23, 24 and 29. Added text for the radar image scaling.	Banks	01/26/2018
V 1.2a	Corrected URLs for the National Hurricane Center and for the image G02CIRUS.JPG.	Banks	02/06/2018
V 1.2b	Corrected file name extensions for GOES-R products to match the correct file type.	Banks	02/22/2018
V 1.2c	Updated the URLs for titles 32, 29, 28 and 27. Changed the file extension for title 32 to PNG.	Banks	06/22/2018
V 1.3	Updated entire document to be a single word document. Corrected multiple URLs to use https instead of http.	Banks	7/13/2018
V 1.3a	Corrected the filename for GOES-N on title 22 from G02CIRUS.JPG to G16CIRCUS.JPG.	Banks	8/03/2018
V 1.3b	NHC Trop Storm Track: AL 3-Day cone replaced by 5-Day cone (Title 44); added EP 5-Day cone product (Title 45).	Gillespie	8/17/2018

This document is controlled by the Dissemination Systems Team (DST), Office of Dissemination, US National Weather Service. Any comments or corrections to this release should be addressed to:

[nws.emwin.support@noaa.gov](mailto:nws.emwin.support@noaa.gov)

1. **Overview.** The Emergency Managers Weather Information Network (EMWIN) File Image and Text Data Capture Catalog lists the text and image files disseminated by EMWIN. This document defines the “EMWIN broadcast product baseline” by the list of products contained herein. These products are captured by EMWIN from remote web sites and intended for public dissemination to provide user a heightened sense of situational awareness with regard to weather and water conditions and forecasts. The products described in this document are accessible by the general public, providing they have the commercial systems and services necessary to receive and display the product(s). The products are not encrypted.

2. **Catalog Format.** The product listing includes the following elements/characteristics:

- a. Title
- b. Uniform Resource Locator (URL), or file source web address”<sup>1</sup>
- c. GOES-N series satellite EMWIN broadcast filename
- d. GOES-R series satellite High Rate Information Transmission (HRIT)/EMWIN broadcast filename<sup>2</sup>
- e. Description of the World Meteorological Organization (WMO) abbreviated header fields
- f. EMWIN message priority
- g. Visual representation of a typical image contained in the file

*Note 1: The public also has the option to directly access the products over the Internet by visiting the product URL. There is however, no assurance that the listed URLs will remain open for public access in the future. Public access to these URLs is controlled by the owning organizations.*

*Note 2: The “EMWIN GOES-R Filename Convention Document” is found here:  
<http://www.nws.noaa.gov/emwin/index.htm#documents>*

3. **Product Baseline Management.**

- a. The EMWIN Program Office, Dissemination Systems Team (DST), Office of Dissemination, US National Weather Service, maintains this product listing and is the authority for make changes to the product set and individual product descriptions.
- b. Questions, comments and recommendations regarding this publication and the product set may be forwarded to the following email for review and consideration:

[nws.emwin.support@noaa.gov](mailto:nws.emwin.support@noaa.gov)

#### 4. Abbreviations

Abbreviation	Explanation
DST	Dissemination Systems Team
EMWIN	Emergency Managers Weather Information Network
GOES	Geostationary Operational Environmental Satellite
HRIT	High Rate Information Transmission
NOAA	National Oceanic and Atmospheric Administration
URL	Uniform Resource Locator
US	United States of America
WMO	World Meteorological Organization

*\*\* remaining page intentionally blank \*\**

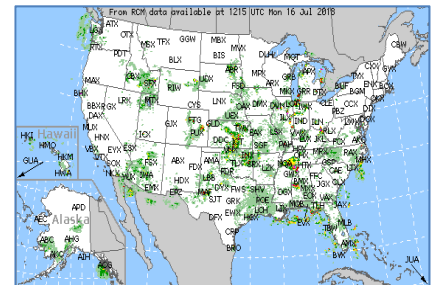
## 5. EMWIN Image and Text Data Capture Products

**Note:** All radar images are reduced to 3/4 of the original image size prior to broadcast.

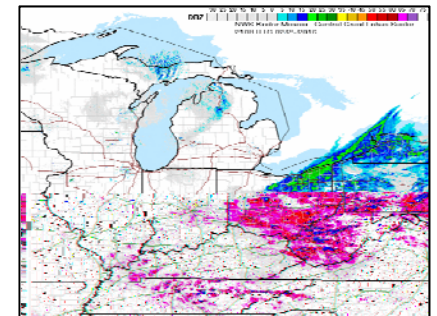
**Title-01:** Weather Satellite Ephemerides  
**URL:** <http://celestrak.com/NORAD/elements/weather.txt>  
**GOES-N fn** ephtwous.txt  
**GOES-R fn** Z\_NOXX10KWBCddhmm\_C\_KWIN\_yyyyMMddhhmmss\_nnnnnn-4-EPHTWOUS.TXT  
 "Z" Originating center local product identifier  
 T1 N - Notices  
 T2 O - METNO/WIFMA  
 A1A2 XX - For use when other designators are not appropriate  
 ii 10 - Unlisted  
 Pri 3  
 Rev 2018-08-17

METEOSAT-7  
 1 24932U 97049B 16062.50875964 ...  
 2 24932 10.0557 41.6922 0001990 ...  
 NOAA 15  
 1 25338U 98030A 16062.54962326 ...  
 2 25338 98.7829 66.4887 0011450 ...  
 METEOSAT-8 (MSG-1)  
 1 27509U 02040B 16062.14401054 ...  
 2 27509 4.0124 60.1514 0001744 ...  
 KALPANA-1 (METSAT 1)

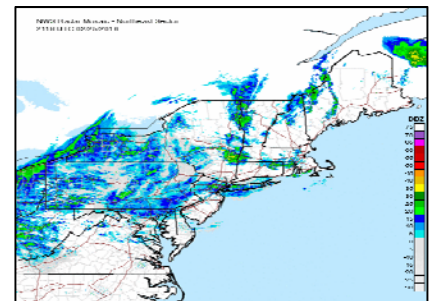
**Title-02:** US Radar Cloud Tops  
**URL:** [https://aviationweather.gov/data/obs/radar/radar\\_nav.gif](https://aviationweather.gov/data/obs/radar/radar_nav.gif)  
**GOES-N fn** radallus.gif  
**GOES-R fn** Z\_QATA00KKCddhmm\_C\_KWIN\_yyyyMMddhhmmss\_nnnnnn-3-RADALLUS.GIF  
 "Z" Originating center local product identifier  
 T1 Q - Pictorial information regional (Binary coded)  
 T2 A - Radar data  
 A1 T - 45°W - 180° northern hemisphere  
 A2 A - Analysis (00 hour)  
 ii 00 - Entire atmosphere (e.g. precipitable water)  
 Pri 3  
 Rev 2018-07-10



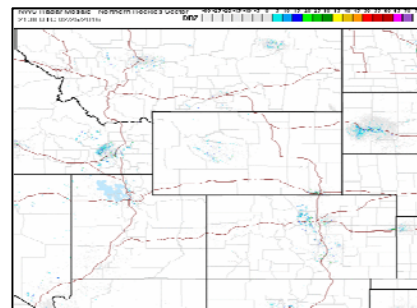
**Title-03:** US Radar Mosaic - Great Lakes Sector [NWS]  
**URL:** <https://radar.weather.gov/Conus/RadarImg/centgrtlakes.gif>  
**GOES-N fn** radgtrlk.gif  
**GOES-R fn** Z\_QATA00KWBCddhmm\_C\_KWIN\_yyyyMMddhhmmss\_nnnnnn-3-RADGRTLK.GIF  
 "Z" Originating center local product identifier  
 T1 Q - Pictorial information regional (Binary coded)  
 T2 A - Radar data  
 A1 T - 45°W - 180° northern hemisphere  
 A2 A - Analysis (00 hour)  
 ii 00 - Entire atmosphere (e.g. precipitable water)  
 Pri 3  
 Rev 2018-07-10



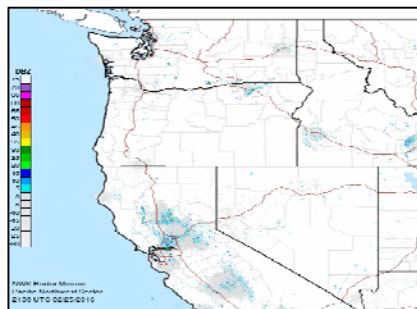
**Title-04:** US Radar Mosaic - Northeast Sector [NWS]  
**URL:** <https://radar.weather.gov/Conus/RadarImg/northeast.gif>  
**GOES-N fn** radnthes.gif  
**GOES-R fn** Z\_QATA00KWBCddhmm\_C\_KWIN\_yyyyMMddhhmmss\_nnnnnn-3-RADNTHESES.GIF  
 "Z" Originating center local product identifier  
 T1 Q - Pictorial information regional (Binary coded)  
 T2 A - Radar data  
 A1 T - 45°W - 180° northern hemisphere  
 A2 A - Analysis (00 hour)  
 ii 00 - Entire atmosphere (e.g. precipitable water)  
 Pri 3  
 Rev 2018-07-10



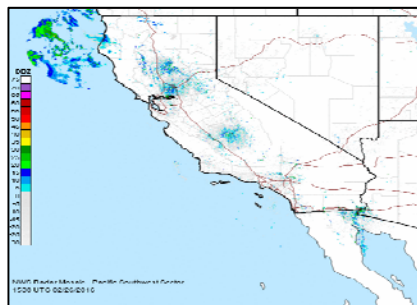
**Title-05:** US Radar Mosaic - Northern Rockies Sector [NWS]  
**URL:** <https://radar.weather.gov/Conus/RadarImg/northrockies.gif>  
**GOES-N fn** radrcnt.gif  
**GOES-R fn** Z\_QATA00KWBCddhmm\_C\_KWIN\_yyyyMMddhhmss\_nnnnn-3-RADRCNT.GIF  
**"Z"** Originating center local product identifier  
**T1** Q - Pictorial information regional (Binary coded)  
**T2** A - Radar data  
**A1** T - 45°W - 180° northern hemisphere  
**A2** A - Analysis (00 hour)  
**ii** 00 - Entire atmosphere (e.g. precipitable water)  
**Pri** 3  
**Rev** 2018-07-10



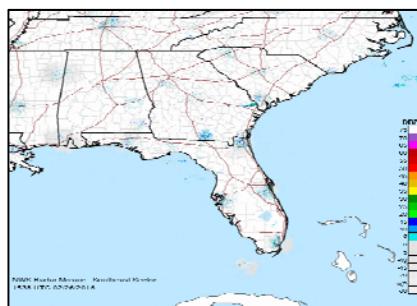
**Title-06:** US Radar Mosaic - Pacific Northwest Sector [NWS]  
**URL:** <https://radar.weather.gov/Conus/RadarImg/pacnorthwest.gif>  
**GOES-N fn** radpacnw.gif  
**GOES-R fn** Z\_QATA00KWBCddhmm\_C\_KWIN\_yyyyMMddhhmss\_nnnnn-3-RADPACNW.GIF  
**"Z"** Originating center local product identifier  
**T1** Q - Pictorial information regional (Binary coded)  
**T2** A - Radar data  
**A1** T - 45°W - 180° northern hemisphere  
**A2** A - Analysis (00 hour)  
**ii** 00 - Entire atmosphere (e.g. precipitable water)  
**Pri** 3  
**Rev** 2018-07-10



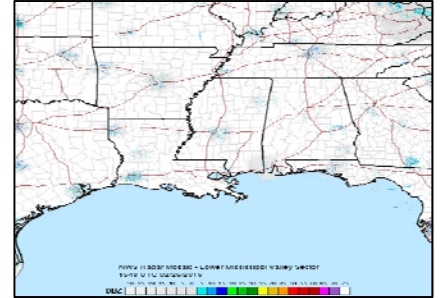
**Title-07:** US Radar Mosaic - Pacific Southwest Sector [NWS]  
**URL:** <https://radar.weather.gov/Conus/RadarImg/pacsouthwest.gif>  
**GOES-N fn** radpacsw.gif  
**GOES-R fn** Z\_QATA00KWBCddhmm\_C\_KWIN\_yyyyMMddhhmss\_nnnnn-3-RADPACSW.GIF  
**"Z"** Originating center local product identifier  
**T1** Q - Pictorial information regional (Binary coded)  
**T2** A - Radar data  
**A1** T - 45°W - 180° northern hemisphere  
**A2** A - Analysis (00 hour)  
**ii** 00 - Entire atmosphere (e.g. precipitable water)  
**Pri** 3  
**Rev** 2018-07-10



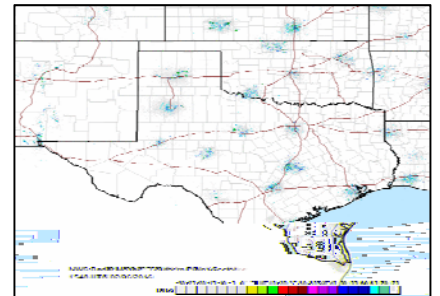
**Title-08:** US Radar Mosaic - Southeast Sector [NWS]  
**URL:** <https://radar.weather.gov/Conus/RadarImg/southeast.gif>  
**GOES-N fn** radsthes.gif  
**GOES-R fn** Z\_QATA00KWBCddhmm\_C\_KWIN\_yyyyMMddhhmss\_nnnnn-3-RADSTHES.GIF  
**"Z"** Originating center local product identifier  
**T1** Q - Pictorial information regional (Binary coded)  
**T2** A - Radar data  
**A1** T - 45°W - 180° northern hemisphere  
**A2** A - Analysis (00 hour)  
**ii** 00 - Entire atmosphere (e.g. precipitable water)  
**Pri** 3  
**Rev** 2018-07-10



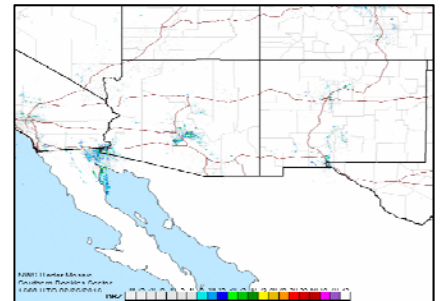
**Title-09:** Us Radar Mosaic - Lower Mississippi Valley Sector [NWS]  
**URL:** <https://radar.weather.gov/Conus/RadarImg/southmissvly.gif>  
**GOES-N fn** radmsvly.gif  
**GOES-R fn** Z\_QATA00KWBCddhmm\_C\_KWIN\_yyyyMMddhhmmss\_nnnnnn-3-RADSMSVY.GIF  
**"Z"** Originating center local product identifier  
**T1** Q - Pictorial information regional (Binary coded)  
**T2** A - Radar data  
**A1** T - 45°W - 180° northern hemisphere  
**A2** A - Analysis (00 hour)  
**ii** 00 - Entire atmosphere (e.g. precipitable water)  
**Pri** 3  
**Rev** 2018-07-10



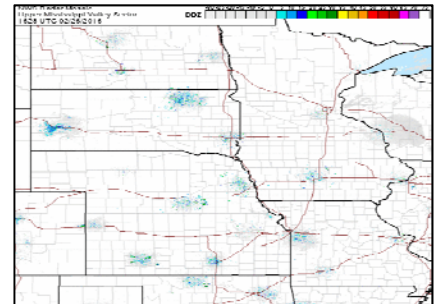
**Title-10:** US Radar Mosaic - Southern Plains Sector [NWS]  
**URL:** <https://radar.weather.gov/Conus/RadarImg/southplains.gif>  
**GOES-N fn** radstphl.gif  
**GOES-R fn** Z\_QATA00KWBCddhmm\_C\_KWIN\_yyyyMMddhhmmss\_nnnnnn-3-RADSTHPL.GIF  
**"Z"** Originating center local product identifier  
**T1** Q - Pictorial information regional (Binary coded)  
**T2** A - Radar data  
**A1** T - 45°W - 180° northern hemisphere  
**A2** A - Analysis (00 hour)  
**ii** 00 - Entire atmosphere (e.g. precipitable water)  
**Pri** 3  
**Rev** 2018-07-10



**Title-11:** US Radar Mosaic - Southern Rockies Sector [NWS]  
**URL:** <https://radar.weather.gov/Conus/RadarImg/southrockies.gif>  
**GOES-N fn** radrckst.gif  
**GOES-R fn** Z\_QATA00KWBCddhmm\_C\_KWIN\_yyyyMMddhhmmss\_nnnnnn-3-RADRCKST.GIF  
**"Z"** Originating center local product identifier  
**T1** Q - Pictorial information regional (Binary coded)  
**T2** A - Radar data  
**A1** T - 45°W - 180° northern hemisphere  
**A2** A - Analysis (00 hour)  
**ii** 00 - Entire atmosphere (e.g. precipitable water)  
**Pri** 3  
**Rev** 2018-07-10

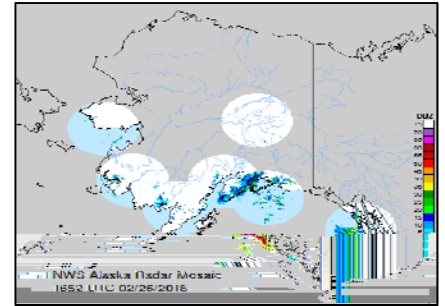


**Title-12:** US Radar Mosaic - Upper Mississippi Valley Sector [NWS]  
**URL:** <https://radar.weather.gov/Conus/RadarImg/uppermissvly.gif>  
**GOES-N fn** radumsvy.gif  
**GOES-R fn** Z\_QATA00KWBCddhmm\_C\_KWIN\_yyyyMMddhhmmss\_nnnnnn-3-RADUMSVY.GIF  
**"Z"** Originating center local product identifier  
**T1** Q - Pictorial information regional (Binary coded)  
**T2** A - Radar data  
**A1** T - 45°W - 180° northern hemisphere  
**A2** A - Analysis (00 hour)  
**ii** 00 - Entire atmosphere (e.g. precipitable water)  
**Pri** 3  
**Rev** 2018-07-10

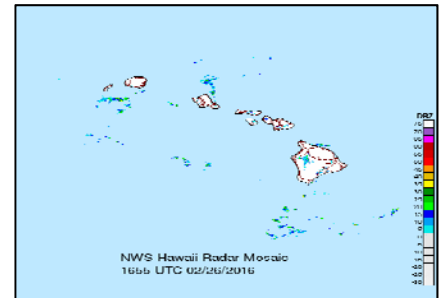




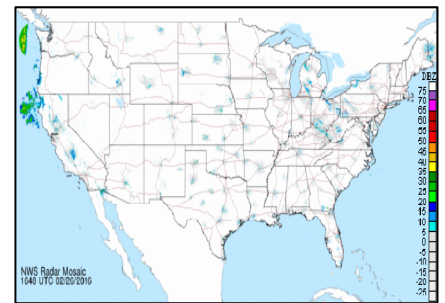
**Title-13:** US Radar Mosaic - Alaska [NWS]  
**URL:** <https://radar.weather.gov/ridge/Conus/RadarImg/alaska.gif>  
**GOES-N fn** radallak.gif  
**GOES-R fn** Z\_QABA00KWBCddhmm\_C\_KWIN\_yyyyMMddhhmmss\_nnnnnn-3-RADALLAK.GIF  
**"Z"** Originating center local product identifier  
**T1** Q - Pictorial information regional (Binary coded)  
**T2** A - Radar data  
**A1** B - 90°W - 180° northern hemisphere  
**A2** A - Analysis (00 hour)  
**ii** 00 - Entire atmosphere (e.g. precipitable water)  
**Pri** 3  
**Rev** 2018-07-10



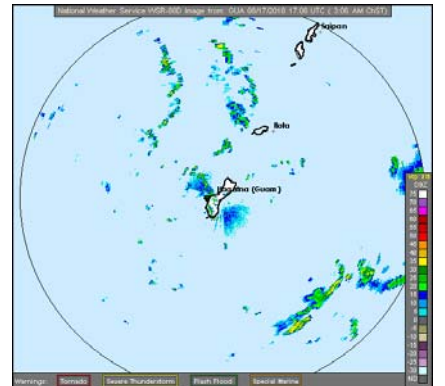
**Title-14:** Hawaii Radar Mosaic [NWS]  
**URL:** <https://radar.weather.gov/ridge/Conus/RadarImg/hawaii.gif>  
**GOES-N fn** radallhi.gif  
**GOES-R fn** Z\_QAFA00KWBCddhmm\_C\_KWIN\_yyyyMMddhhmmss\_nnnnnn-3-RADALLHI.GIF  
**"Z"** Originating center local product identifier  
**T1** Q - Pictorial information regional (Binary coded)  
**T2** A - Radar data  
**A1** F - 90°W - 180° tropical belt  
**A2** A - Analysis (00 hour)  
**ii** 00 - Entire atmosphere (e.g. precipitable water)  
**Pri** 3  
**Rev** 2018-07-10



**Title-15:** US Radar Mosaic [NWS]  
**URL:** [https://radar.weather.gov/ridge/Conus/RadarImg/latest\\_Small.gif](https://radar.weather.gov/ridge/Conus/RadarImg/latest_Small.gif)  
**GOES-N fn** radrefus.gif  
**GOES-R fn** Z\_QATA00KWBCddhmm\_C\_KWIN\_yyyyMMddhhmmss\_nnnnnn-3-RADREFUS.GIF  
**"Z"** Originating center local product identifier  
**T1** Q - Pictorial information regional (Binary coded)  
**T2** A - Radar data  
**A1** T - 45°W - 180° northern hemisphere  
**A2** A - Analysis (00 hour)  
**ii** 00 - Entire atmosphere (e.g. precipitable water)  
**Pri** 3  
**Rev** 2018-07-10

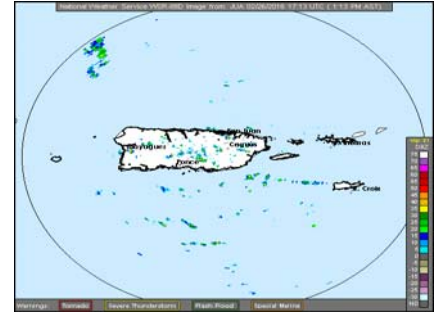


**Title-16:** National Weather Service WSR-88D Image from: GUA  
**URL:** [https://radar.weather.gov/ridge/lite/NOR/GUA\\_0.png](https://radar.weather.gov/ridge/lite/NOR/GUA_0.png)  
**GOES-N fn** radallgu.png  
**GOES-R fn** Z\_QAGA00PGUMddhmm\_C\_KWIN\_yyyyMMddhhmmss\_nnnnnn-3-RADALLGU.PNG  
**"Z"** Originating center local product identifier  
**T1** Q - Pictorial information regional (Binary coded)  
**T2** A - Radar data  
**A1** G - 180° - 90°E tropical belt  
**A2** A - Analysis (00 hour)  
**ii** 00 - Entire atmosphere (e.g. precipitable water)  
**Pri** 3  
**Rev** 2018-08-17

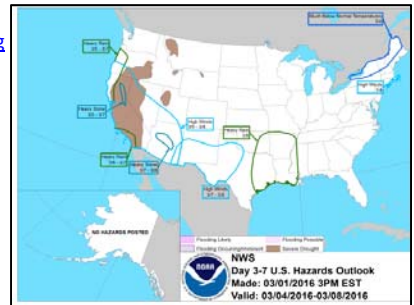




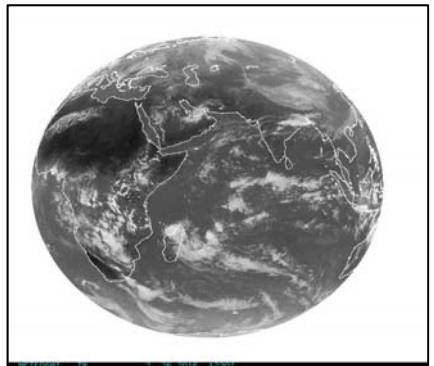
**Title-17:** National Weather Service WSR-88D Image from: JUA  
**URL:** [https://radar.weather.gov/ridge/lite/NOR/JUA\\_0.png](https://radar.weather.gov/ridge/lite/NOR/JUA_0.png)  
**GOES-N fn** radallpr.png  
**GOES-R fn** Z\_QAEA00TJSjddhmm\_C\_KWIN\_yyyyMMddhhmmss\_nnnnn-3-RADALLPR.PNG  
**"Z"** Originating center local product identifier  
**T1** Q - Pictorial information regional (Binary coded)  
**T2** A - Radar data  
**A1** E - 0° - 90°W tropical belt  
**A2** A - Analysis (00 hour)  
**ii** 00 - Entire atmosphere (e.g. precipitable water)  
**Pri** 3  
**Rev** 2018-07-10



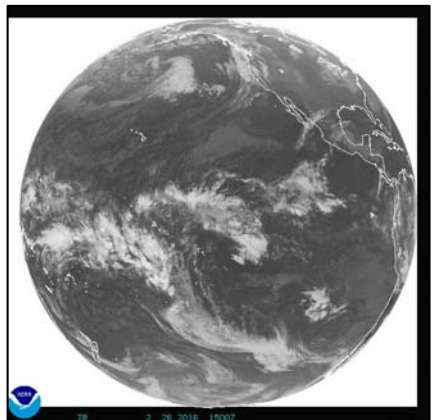
**Title-18:** NWS Day 3-7 U.S. Hazards Outlook  
**URL:** [http://www.cpc.ncep.noaa.gov/products/predictions/threats/hazards\\_d3\\_7\\_contours.png](http://www.cpc.ncep.noaa.gov/products/predictions/threats/hazards_d3_7_contours.png)  
**GOES-N fn** ushzhtrt.png  
**GOES-R fn** Z\_QGTK98KWBCddhmm\_C\_KWIN\_yyyyMMddhhmmss\_nnnnn-4-USHZHTRT.PNG  
**"Z"** Originating center local product identifier  
**T1** Q - Pictorial information regional (Binary coded)  
**T2** G - Significant Weather  
**A1** T - 45°W - 180° northern hemisphere  
**A2** K - 72 hours forecast  
**ii** 98 - Air properties for the Earth's surface  
**Pri** 4  
**Rev** 2018-08-17



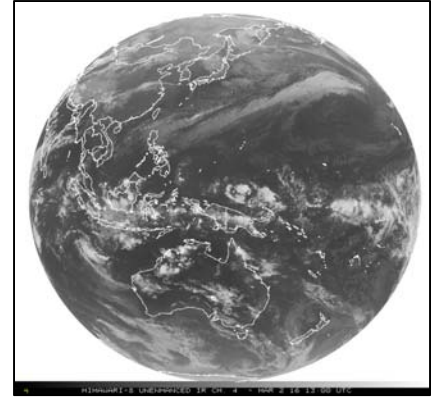
**Title-19:** East Africa / West Indian Ocean IR [METEOSAT]  
**URL:** <http://www.goes.noaa.gov/FULLDISK/GIIR.JPG>  
**GOES-N fn** indcirus.jpg  
**GOES-R fn** Z\_EIIO00KWBCddhmm\_C\_KWIN\_yyyyMMddhhmmss\_nnnnn-4-INDCIRUS.JPG  
**"Z"** Originating center local product identifier  
**T1** E - Satellite imagery  
**T2** I - Infrared  
**A1A2** IO - Indian Ocean area  
**ii** 00 - (arbitrary)  
**Pri** 4  
**Rev** 2018-07-10



**Title-20:** Eastern Pacific Ocean area IR [NOAA]  
**URL:** <http://www.goes.noaa.gov/FULLDISK/GWIR.JPG>  
**GOES-N fn** g10fdius.jpg  
**GOES-R fn** Z\_EIPZ00KWBCddhmm\_C\_KWIN\_yyyyMMddhhmmss\_nnnnn-4-G10FDIUS.JPG  
**"Z"** Originating center local product identifier  
**T1** E - Satellite imagery  
**T2** I - Infrared  
**A1A2** PZ - Eastern Pacific Area  
**ii** 00 - (arbitrary)  
**Pri** 4  
**Rev** 2018-07-10



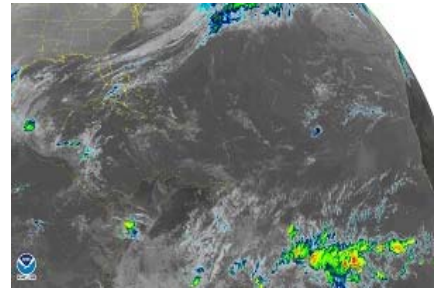
**Title-21:** Western North Pacific Area IR [MTSAT]  
**URL:** <http://www.goes.noaa.gov/dimg/jma/fd/ir4/10.gif>  
**GOES-N fn** gms008ja.gif  
**GOES-R fn** Z\_EIPQ00KWBCddhmm\_C\_KWIN\_yyyyMMddhhmmss\_nnnnnn-4-GMS008JA.GIF  
 "Z" Originating center local product identifier  
 T1 E - Satellite imagery  
 T2 I - Infrared  
 A1A2 PQ - Western North Pacific area  
 ii 00 - (arbitrary)  
 Pri 4  
 Rev 2018-08-17



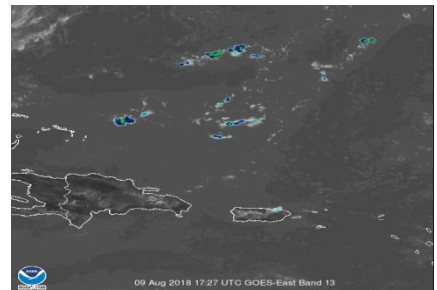
**Title-22:** United States IR 2km - CONUS East View [NOAA]  
**URL:** <https://cdn.star.nesdis.noaa.gov/GOES16/ABI/CONUS/13/1250x750.jpg>  
**GOES-N fn** g16cirus.jpg  
**GOES-R fn** Z\_EINA00KWBCddhmm\_C\_KWIN\_yyyyMMddhhmmss\_nnnnnn-4-G16CIRUS.JPG  
 "Z" Originating center local product identifier  
 T1 E - Satellite imagery  
 T2 I - Infrared  
 A1A2 NA - North America  
 ii 00 - (arbitrary)  
 Pri 4  
 Rev 2018-07-10



**Title-23:** RA-IV Atlantic Hurricane Basin IR 2km [NOAA]  
**URL:** <https://cdn.star.nesdis.noaa.gov/GOES16/ABI/SECTOR/taw/13/900x540.jpg>  
**GOES-N fn** g02hurus.jpg  
**GOES-R fn** Z\_EINT00KWBCddhmm\_C\_KWIN\_yyyyMMddhhmmss\_nnnnnn-4-G02HURUS.JPG  
 "Z" Originating center local product identifier  
 T1 E - Satellite imagery  
 T2 I - Infrared  
 A1A2 NT - North Atlantic area  
 ii 00 - (arbitrary)  
 Pri 4  
 Rev 2018-07-10



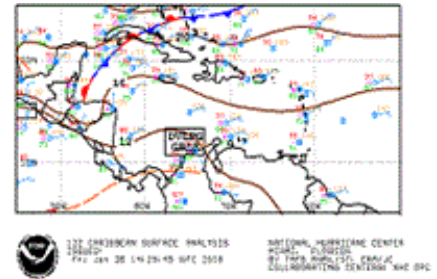
**Title-24:** Puerto Rico IR 2km [NOAA]  
**URL:** <https://cdn.star.nesdis.noaa.gov/GOES16/ABI/SECTOR/pr/13/600x600.jpg>  
**GOES-N fn** imgsjuvr.jpg  
**GOES-R fn** Z\_EIPU00KWBCddhmm\_C\_KWIN\_yyyyMMddhhmmss\_nnnnnn-4-IMGSJUPR.JPG  
 "Z" Originating center local product identifier  
 T1 E - Satellite imagery  
 T2 I - Infrared  
 A1A2 PU - Puerto Rico  
 ii 00 - (arbitrary)  
 Pri 4  
 Rev 2018-07-10



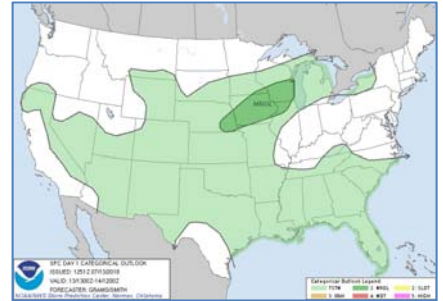
**Title-25:** US West Coast IR 4km [NOAA]  
**URL:** <http://www.goes.noaa.gov/GIFS/WCIR.JPG>  
**GOES-N fn** g10cirus.jpg  
**GOES-R fn** Z\_EIUS00KWB Cddhhmm\_C\_KWIN\_yyyyMMddhhmss\_nnnnnn-4-G10CIRUS.JPG  
 "Z" Originating center local product identifier  
 T1 E - Satellite imagery  
 T2 I - Infrared  
 A1A2 US - United States of America  
 ii 00 - (arbitrary)  
 Pri 4  
 Rev 2018-07-10



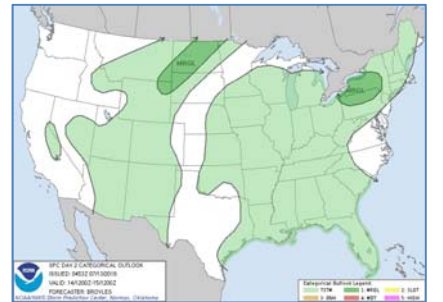
**Title-26:** Caribbean Surface Analysis [NHC/NOAA]  
**URL:** [https://www.nhc.noaa.gov/tafb\\_latest/CAR\\_latest.gif](https://www.nhc.noaa.gov/tafb_latest/CAR_latest.gif)  
**GOES-N fn** CSA001us.gif  
**GOES-R fn** Z\_QYEA98KNHCddhhmm\_C\_KWIN\_yyyyMMddhhmss\_nnnnnn-4-CSA001US.GIF  
 "Z" Originating center local product identifier  
 T1 Q - Pictorial information regional (Binary coded)  
 T2 Y - Observational plotted chart  
 A1 E - 0°-90°W tropical belt  
 A2 A - Analysis (00 hour)  
 ii 98 - Air properties for the Earth's surface  
 Pri 4  
 Rev 2018-07-10



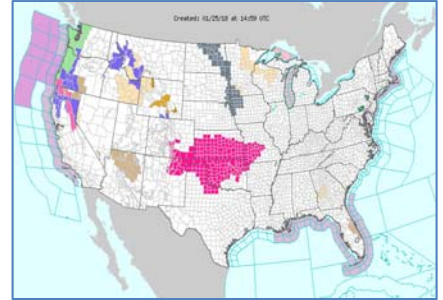
**Title-27:** US Convective Outlook Day 1 [SPC/NOAA]  
**URL:** <https://www.spc.noaa.gov/products/outlook/day1otlk.gif>  
**GOES-N fn** moddy1us.gif  
**GOES-R fn** Z\_QETI00KWN Sddhhmm\_C\_KWIN\_yyyyMMddhhmss\_nnnnnn-4-MODDY1US.GIF  
 "Z" Originating center local product identifier  
 T1 Q - Pictorial information regional (Binary coded)  
 T2 E - Precipitation  
 A1 T - 45°W - 180° northern hemisphere  
 A2 I - 24 hours forecast  
 ii 00 - Entire atmosphere (e.g. precipitable water)  
 Pri 4  
 Rev 2018-07-10



**Title-28:** US Convective Outlook Day 2 [SPC/NOAA]  
**URL:** <https://www.spc.noaa.gov/products/outlook/day2otlk.gif>  
**GOES-N fn** moddy2us.gif  
**GOES-R fn** Z\_QETQ00KWN Sddhhmm\_C\_KWIN\_yyyyMMddhhmss\_nnnnnn-4-MODDY2US.GIF  
 "Z" Originating center local product identifier  
 T1 Q - Pictorial information regional (Binary coded)  
 T2 E - Precipitation  
 A1 T - 45°W - 180° northern hemisphere  
 A2 Q - 48 hours forecast  
 ii 00 - Entire atmosphere (e.g. precipitable water)  
 Pri 4  
 Rev 2018-08-17



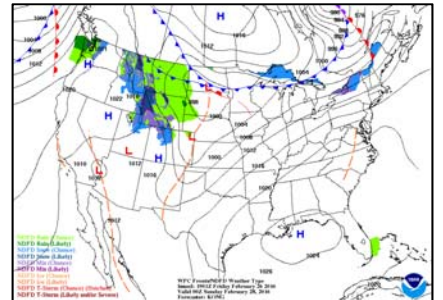
**Title-29:** US Watches, Warnings & Advisories  
**URL:** <https://forecast.weather.gov/wwamap/png/US.png>  
**GOES-N fn** imgwwaus.png  
**GOES-R fn** Z\_QGTA98KWNsddhmm\_C\_KWIN\_yyyyMMddhmmss\_nnnnnn-4-IMGWVAUS.PNG  
 "Z" Originating center local product identifier  
 T1 Q - Pictorial information regional (Binary coded)  
 T2 G - Significant weather  
 A1 T - 45°W - 180° northern hemisphere  
 A2 A - Analysis  
 ii 98 - Air properties for the Earth's surface  
 Pri 4  
 Rev 2018-08-17



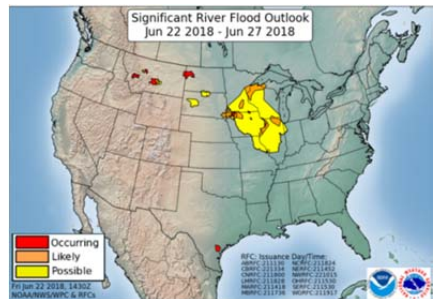
**Title-30:** North American Sounder CAPE [NOAA/GOES ]  
**URL:** <http://www.ssd.noaa.gov/PS/PCPN/DATA/RT/NA/GCAPE/20.jpg>  
**GOES-N fn** imgsndus.jpg  
**GOES-R fn** Z\_EYUS00KWBCddhmm\_C\_KWIN\_yyyyMMddhmmss\_nnnnnn-4-IMGSNDUS.JPG  
 "Z" Originating center local product identifier  
 T1 E - Satellite imagery  
 T2 Y - User specified: Convective Available Potential Energy (CAPE)  
 A1A2 US - United States of America  
 ii 00 - (arbitrary)  
 Pri 4  
 Rev 2018-07-10



**Title-31:** WPC Fronts / NDFD Weather Type [NOAA]  
**URL:** <https://www.wpc.ncep.noaa.gov/basicwx/96fndfd.gif>  
**GOES-N fn** mod96fbw.gif  
**GOES-R fn** Z\_QGTI98KWNHddhmm\_C\_KWIN\_yyyyMMddhmmss\_nnnnnn-4-MOD96FBW.GIF  
 "Z" Originating center local product identifier  
 T1 Q - Pictorial information regional (Binary coded)  
 T2 G - Significant weather  
 A1 T - 45°W - 180° northern hemisphere  
 A2 I - 24 hours forecast  
 ii 98 - Air properties for the Earth's surface  
 Pri 4  
 Rev 2018-07-10

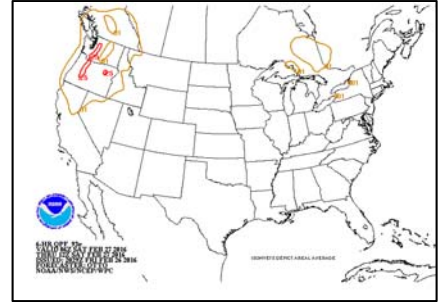


**Title-32:** US Significant River Flood Outlook [NOAA]  
**URL:** [https://www.wpc.ncep.noaa.gov/nationalfloodoutlook/finalfop\\_nobounds.png](https://www.wpc.ncep.noaa.gov/nationalfloodoutlook/finalfop_nobounds.png)  
**GOES-N fn** gphj88us.png  
**GOES-R fn** Z\_QGTO88KWNsddhmm\_C\_KWIN\_yyyyMMddhmmss\_nnnnnn-4-GPHJ88US.png  
 "Z" Originating center local product identifier  
 T1 Q - Pictorial information regional (Binary coded)  
 T2 G - Significant weather  
 A1 T - 45°W - 180° northern hemisphere  
 A2 O - 120 hours forecast (5 days)  
 ii 88 - Ground or water properties for the Earth's surface  
 Pri 4  
 Rev 2018-08-17

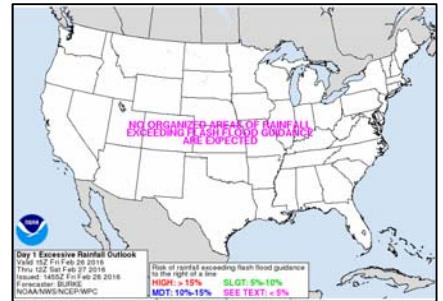




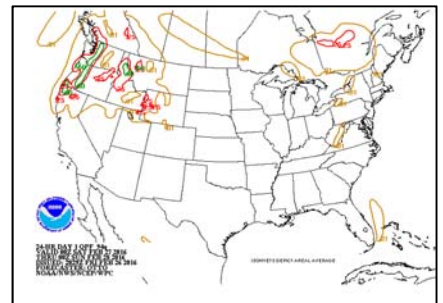
**Title-33:** US 6-Hour QPF 93e [WPC/NOAA]  
**URL:** <https://www.wpc.ncep.noaa.gov/qpf/93ewbg.gif>  
**GOES-N fn** mod93sus.gif  
**GOES-R fn** Z\_QETC00KWNHddhmm\_C\_KWIN\_yyyyMMddhhmmss\_nnnnnn-4-MOD93SUS.GIF  
 "Z" Originating center local product identifier  
 T1 Q - Pictorial information regional (Binary coded)  
 T2 E - Precipitation  
 A1 T - 45°W - 180° northern hemisphere  
 A2 C - 6 hours forecast  
 ii 00 - Entire atmosphere (e.g. precipitable water)  
 Pri 4  
 Rev 2018-07-10



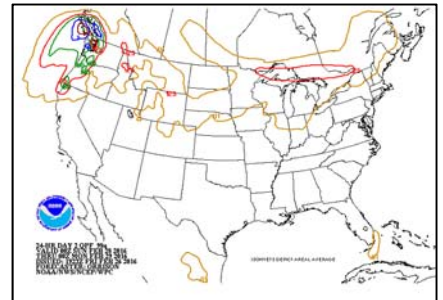
**Title-34:** US Day 1 Excessive Rainfall Outlook [WPC/NOAA]  
**URL:** <https://www.wpc.ncep.noaa.gov/qpf/94ewbg.gif>  
**GOES-N fn** mod94sus.gif  
**GOES-R fn** Z\_QETI88KWNHddhmm\_C\_KWIN\_yyyyMMddhhmmss\_nnnnnn-4-MOD94SUS.GIF  
 "Z" Originating center local product identifier  
 T1 Q - Pictorial information regional (Binary coded)  
 T2 E - Precipitation  
 A1 T - 45°W - 180° northern hemisphere  
 A2 I - 24 hours forecast  
 ii 88 - Ground or water properties for the Earth's surface  
 Pri 4  
 Rev 2018-07-10



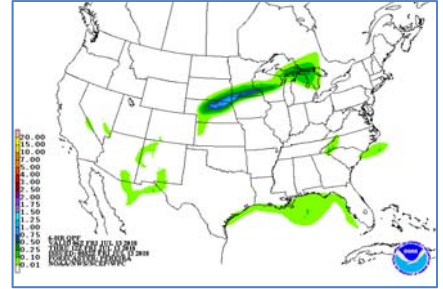
**Title-35:** US 24-HR Day 1 QPF 94q [WPC/NOAA]  
**URL:** <https://www.wpc.ncep.noaa.gov/qpf/94qwbg.gif>  
**GOES-N fn** modqp1us.gif  
**GOES-R fn** Z\_QETI00KWNHddhmm\_C\_KWIN\_yyyyMMddhhmmss\_nnnnnn-4-MODQP1US.GIF  
 "Z" Originating center local product identifier  
 T1 Q - Pictorial information regional (Binary coded)  
 T2 E - Precipitation  
 A1 T - 45°W - 180° northern hemisphere  
 A2 I - 24 hours forecast  
 ii 00 - Entire atmosphere (eg precipitable water)  
 Pri 4  
 Rev 2018-08-17



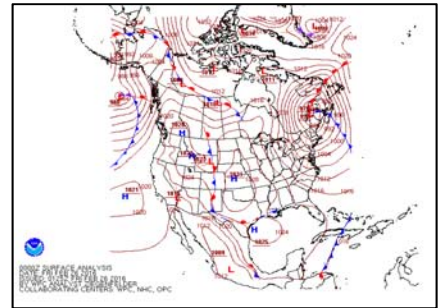
**Title-36:** US 24-HR Day 2 QPF 94q [WPC/NOAA]  
**URL:** <https://www.wpc.ncep.noaa.gov/qpf/98qwbg.gif>  
**GOES-N fn** modqp2us.gif  
**GOES-R fn** Z\_QETQ00KWNHddhmm\_C\_KWIN\_yyyyMMddhhmmss\_nnnnnn-4-MODQP2US.GIF  
 "Z" Originating center local product identifier  
 T1 Q - Pictorial information regional (Binary coded)  
 T2 E - Precipitation  
 A1 T - 45°W - 180° northern hemisphere  
 A2 Q - 48 hours forecast  
 ii 00 - Entire atmosphere (eg precipitable water)  
 Pri 4  
 Rev 2018-07-10



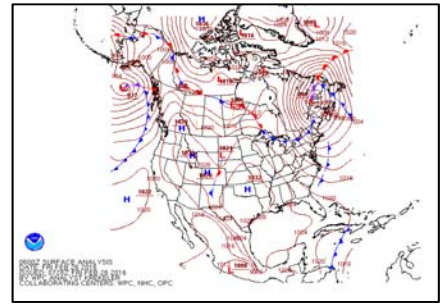
**Title-37:** US 6-HR QPF [WPC/NOAA]  
**URL:** [https://www.wpc.ncep.noaa.gov/qpf/fill\\_91ewbg.gif](https://www.wpc.ncep.noaa.gov/qpf/fill_91ewbg.gif)  
**GOES-N fn** mod91eus.gif  
**GOES-R fn** Z\_QETC00KWNHddhhmm\_C\_KWIN\_yyyyMMddhhmss\_nnnnnn-4-MOD91EUS.GIF  
 "Z" Originating center local product identifier  
 T1 Q - Pictorial information regional (Binary coded)  
 T2 E - Precipitation  
 A1 T - 45°W - 180° northern hemisphere  
 A2 C - 6 hours forecast  
 ii 00 - Entire atmosphere (e.g. precipitable water)  
 Pri 4  
 Rev 2018-07-10



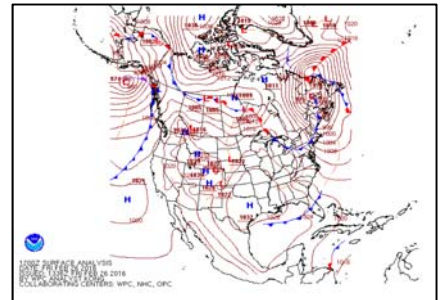
**Title-38:** North America 00Z Surface Analysis  
**URL:** <https://www.wpc.ncep.noaa.gov/sfc/namfntsf00wbg.gif>  
**GOES-N fn** imgfnt00.gif  
**GOES-R fn** Z\_QPTA98KWNHddhhmm\_C\_KWIN\_yyyyMMddhhmss\_nnnnnn-4-IMGFNT00.GIF  
 "Z" Originating center local product identifier  
 T1 Q - Pictorial information regional (Binary coded)  
 T2 P - Pressure  
 A1 T - 45°W - 180° northern hemisphere  
 A2 A - Analysis (00 hour)  
 ii 98 - Air properties for the Earth's surface  
 Pri 4  
 Rev 2018-07-10



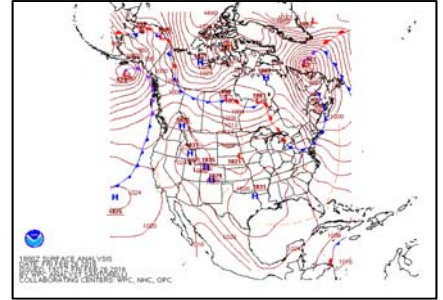
**Title-39:** North America 06Z Surface Analysis  
**URL:** <https://www.wpc.ncep.noaa.gov/sfc/namfntsf06wbg.gif>  
**GOES-N fn** imgfnt06.gif  
**GOES-R fn** Z\_QPTC98KWNHddhhmm\_C\_KWIN\_yyyyMMddhhmss\_nnnnnn-4-IMGFNT06.GIF  
 "Z" Originating center local product identifier  
 T1 Q - Pictorial information regional (Binary coded)  
 T2 P - Pressure  
 A1 T - 45°W - 180° northern hemisphere  
 A2 C - 6 hours forecast  
 ii 98 - Air properties for the Earth's surface  
 Pri 4  
 Rev 2018-07-10



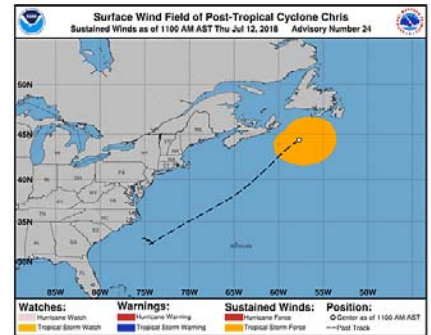
**Title-40:** North America 12Z Surface Analysis  
**URL:** <https://www.wpc.ncep.noaa.gov/sfc/namfntsf12wbg.gif>  
**GOES-N fn** imgfnt12.gif  
**GOES-R fn** Z\_QPTE98KWNHddhhmm\_C\_KWIN\_yyyyMMddhhmss\_nnnnnn-4-IMGFNT12.GIF  
 "Z" Originating center local product identifier  
 T1 Q - Pictorial information regional (Binary coded)  
 T2 P - Pressure  
 A1 T - 45°W - 180° northern hemisphere  
 A2 E - 12 hours forecast  
 ii 98 - Air properties for the Earth's surface  
 Pri 4  
 Rev 2018-07-10



**Title-41:** North America 18Z Surface Analysis  
**URL:** <https://www.wpc.ncep.noaa.gov/sfc/namfntsf18wbg.gif>  
**GOES-N fn** imgfnt18.gif  
**GOES-R fn** Z\_QPTG98KWNHddhmm\_C\_KWIN\_yyyyMMddhmmss\_nnnnnn-4-IMGFNT18.GIF  
 "Z" Originating center local product identifier  
 T1 Q - Pictorial information regional (Binary coded)  
 T2 P - Pressure  
 A1 T - 45°W - 180° northern hemisphere  
 A2 G - 18 hours forecast  
 ii 98 - Air properties for the Earth's surface  
 Pri 4  
 Rev 2018-07-10



**Title-42:** Atlantic Basin Tropical Storm [NHC]  
**URL:** [https://www.nhc.noaa.gov/storm\\_graphics/AT03/AL032018\\_current\\_wind\\_sm2.png](https://www.nhc.noaa.gov/storm_graphics/AT03/AL032018_current_wind_sm2.png)  
**GOES-N fn** alNNYYrs.png (where NN = Storm Seq No; YY = Calendar Year)  
**GOES-R fn** Z\_PWEA98KNHCddhmm\_C\_KWIN\_yyyyMMddhmmss\_nnnnnn-3-ALnnyRS.PNG  
 "Z" Originating center local product identifier  
 T1 P - Pictorial information (Binary coded)  
 T2 W - Wind  
 A1 E - 0° - 90°W tropical belt  
 A2 A - Analysis (00 hour)  
 ii 98 - Air properties for the Earth's surface  
 Pri 4  
 Rev 2018-07-10  
**Note\*** Multiple AT storms per calendar year; folders AT01-AT30 pre-staged at NHC



**Title-43:** Eastern Pacific Basin Tropical Storm [NHC]  
**URL:** [https://www.nhc.noaa.gov/storm\\_graphics/EP11/EP112018\\_current\\_wind\\_sm2.png](https://www.nhc.noaa.gov/storm_graphics/EP11/EP112018_current_wind_sm2.png)  
**GOES-N fn** epNNYYws.png (where NN = Storm Seq No; YY = Calendar Year)  
**GOES-R fn** Z\_PWEA98KNHCddhmm\_C\_KWIN\_yyyyMMddhmmss\_nnnnnn-3-EPnnyWS.PNG  
 "Z" Originating center local product identifier  
 T1 P - Pictorial information (Binary coded)  
 T2 W - Wind  
 A1 F - 90°W - 180° tropical belt  
 A2 A - Analysis (00 hour)  
 ii 98 - Air properties for the Earth's surface  
 Pri 4  
 Rev 2018-07-10  
**Note\*** Multiple AT storms per calendar year; folders EP01-EP30 pre-staged at NHC



**Title-44:** Atlantic Basin Tropical Storm [NHC] 5-Day Forecast Track and Current Winds  
**URL:** [https://www.nhc.noaa.gov/storm\\_graphics/AT03/AL032018\\_5day\\_cone\\_with\\_line\\_and\\_wind\\_sm2.png](https://www.nhc.noaa.gov/storm_graphics/AT03/AL032018_5day_cone_with_line_and_wind_sm2.png)  
**GOES-N fn** alNNYY5d.png (where NN = Storm Seq No; YY = Calendar Year)  
**GOES-R fn** Z\_PWEA98KNHCddhmm\_C\_KWIN\_yyyyMMddhmmss\_nnnnnn-3-ALnny5D.PNG  
 "Z" Originating center local product identifier  
 T1 P - Pictorial information (Binary coded)  
 T2 W - Wind  
 A1 E - 0° - 90°W tropical belt  
 A2 W - (not assigned)  
 ii 98 - Air properties for the Earth's surface  
 Pri 3  
 Rev 2018-08-17  
**Note\*** Multiple AT storms per calendar year; folders AT01-AT30 pre-staged at NHC  
**Note\*** Files larger than 5K are compressed and presented with .zip file extension





**Title-45:** Eastern Pacific Basin Tropical Storm [NHC] 5-Day Forecast Track and Current Winds  
**URL:** [https://www.nhc.noaa.gov/storm\\_graphics/EP14/EP142018\\_5day\\_cone\\_with\\_line\\_and\\_wind\\_sm2.png](https://www.nhc.noaa.gov/storm_graphics/EP14/EP142018_5day_cone_with_line_and_wind_sm2.png)

**GOES-N fn** epNNYY5d.png (where NN = Storm Seq No; YY = Calendar Year)

**GOES-R fn** Z\_PWFW98KNHCddhmm\_C\_KWIN\_yyyyMMddhmmss\_nnnnnn-3-ALnny5D.PNG

**“Z”** Originating center local product identifier

**T1** P - Pictorial information (Binary coded)

**T2** W - Wind

**A1** F - 90°W - 180° tropical belt

**A2** W - (not assigned)

**ii** 98 - Air properties for the Earth's surface

**Pri** 3

**Rev** 2018-08-17

**Note\*** Multiple EP storms per calendar year; folders EP01-EP30 pre-staged at NHC

**Note\*** Files larger than 5K are compressed and presented with .zip file extension

