



Drought Information Statement for South Central Texas

Valid July 3, 2024

Issued By: NWS Austin/San Antonio

Contact Information: sr-ewx.webmaster@noaa.gov

- This product will be updated August 1, 2024 or sooner if drought conditions change significantly.
 - Please see all currently available products at <https://drought.gov/drought-information-statements>.
 - Please visit <https://www.weather.gov/ewx/DroughtInformationStatement> for previous statements.
 - Please visit <https://www.drought.gov/drought-status-updates/> for regional drought status updates.
-
- Despite rainfall from a Tropical Storm, drought conditions saw spotty changes
 - Reservoir levels in the Hill Country and along the Rio Grande remain very low
 - Monthly outlooks show hot temperatures with mostly equal chances of above, below, or near normal rainfall chances for the month of July



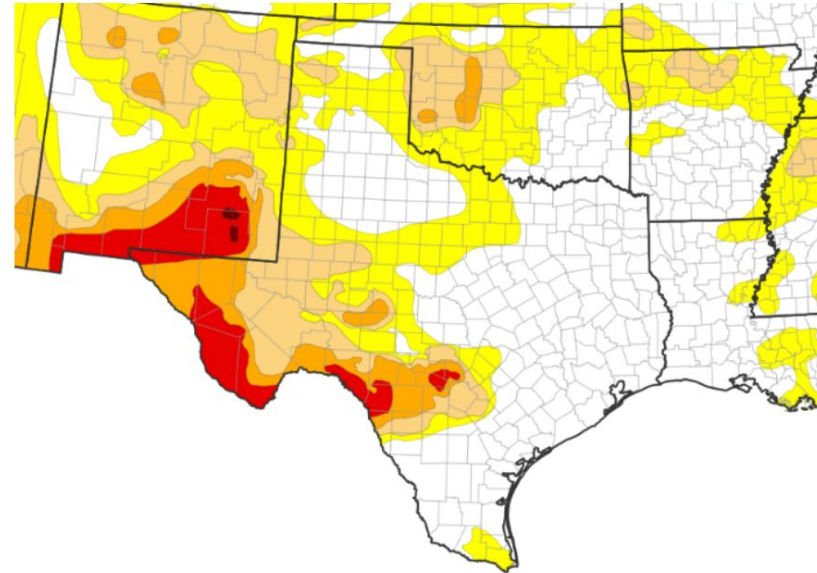


U.S. Drought Monitor

Link to the [latest U.S. Drought Monitor](#) for south central Texas

- Drought intensity and Extent
 - **D3 (Extreme Drought):** Covers portions of the Hill Country and Rio Grande Plains
 - Percent of Area: 9.72%
 - **D2 (Severe Drought):** Extends across the portions of the Hill Country, southern Edwards Plateau, Rio Grande Plains, and I-35 corridor
 - Percent of Area: 21.36%
 - **No Drought or D0 (Abnormally Dry):** Extends across the portions of Rio Grande Plains, and Coastal Plains
 - Percent of Area: 48.02%

U.S. Drought Monitor



U.S. Drought Monitor



Source(s): NDMC, NOAA, USDA
Data Valid: 07/02/24

Drought.gov

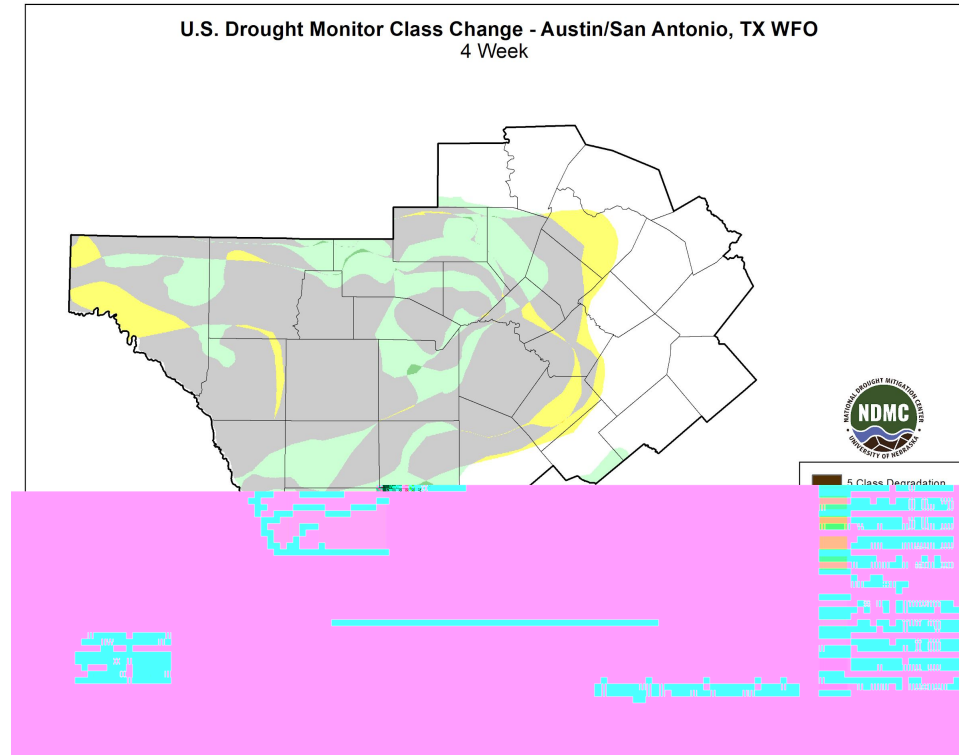




Recent Change in Drought Intensity

Link to the latest [4-week change map](#) for south central Texas

- Four Week Drought Monitor Class Change.
 - Drought Worsened: Portions of the southern Edwards Plateau, Rio Grande Plains, I-35 corridor and Coastal Plains
 - No Change: Much of the southern Edwards Plateau, I-35 Corridor, Rio Grande Plains, and Hill Country
 - Drought Improved: Portions of the southern Edwards Plateau, I-35 Corridor, Rio Grande Plains, and Hill Country



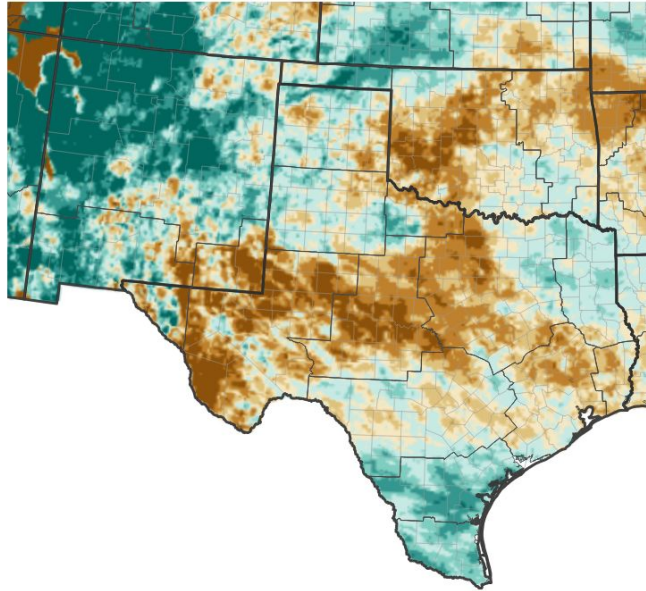


Precipitation

Links to the latest [Precipitation Accumulation](#) and [Percent of Normal](#) over the past 30 days

- Rainfall was very spotty across the service area for the past 30 days
- Some locations saw above normal rainfall of 200 to 300 percent of normal
- While other locations saw only 50 to 75 percent of normal rainfall
- Tropical Storm Alberto helps to bring the above normal rainfall for primarily for Fayette, Maverick, and Dimmit Counties

30-Day Precipitation: Percent of PRISM Normal

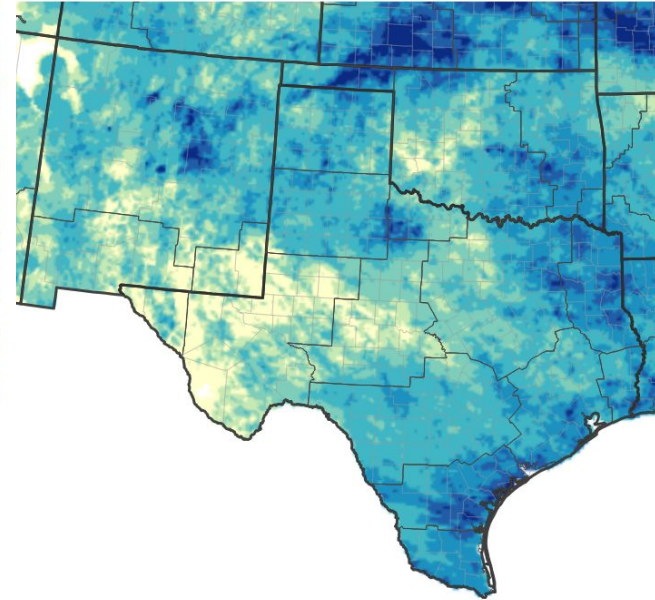


Percent of Normal Precipitation (%)



Source(s): National Weather Service National Water Prediction Service; image courtesy of Drought.gov Data Valid: 07/02/24

WPS 30-Day Precipitation Accumulations (inches)



ches of Precipitation



Source(s): National Weather Service National Water Prediction Service; image courtesy of Drought.gov Data Valid: 07/02/24





Summary of Impacts

Links: See/submit [Condition Monitoring Observer Reports \(CMOR\)](#) and view the [Drought Impacts Reporter](#)

Hydrologic Impacts

- Late month rainfall helped to provide some short term improvement in streamflows along the Colorado and Llano River basins ([USGS](#))
- Unfortunately, the longer running rainfall deficits continue to prevent significant improvement the much of the service area's river basins where most are either in the below or much below normal range for this time of year ([USGS](#))
- Medina Lake is now at 2.3 percent capacity, Amistage is 24% capacity, and Canyon Lake has returned to setting daily record low elevations
- See next page for more details

Agricultural Impacts

- Please see the latest [Crop & Weather Report](#) from Texas A&M Agrilife
- Despite some moisture from Tropical Storm Alberto, soil moistures have dropped to well below normal across the entire service area due to numerous hot and dry days ([NWS Climate Prediction Center](#))

Fire Hazard Impacts

- Normal wildland fire activity is forecast through the month of July ([National Interagency Coordination Center](#))
- See Fire Hazard page for more details

Drought Mitigation Actions

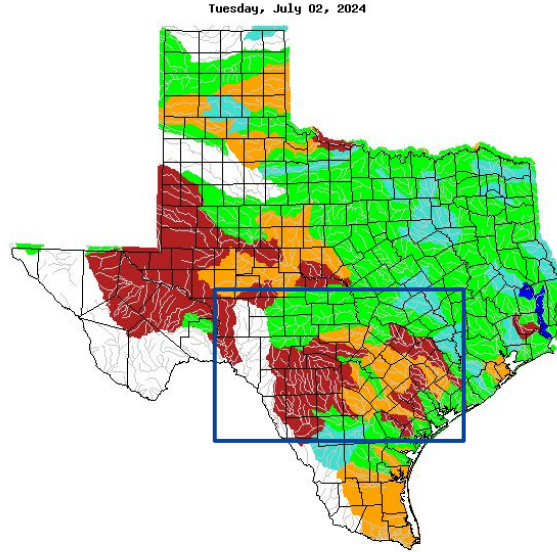
- Please refer to your municipality and/or water provider for mitigation information.
- Select [Municipality Restrictions](#) (as of 7/3/2024)
 - City of Uvalde: Stage 5
 - City of Fredericksburg: Stage 4
 - City of Kerrville: Stage 3
 - City of San Antonio: Stage 3
 - City of Universal City: Stage 3
 - City of Georgetown: Stage 2
 - City of New Braunfels: Stage 2
 - City of Austin: Stage 2
 - City of Del Rio: Stage 2
 - City of Llano: Stage 2





Hydrologic Conditions and Impacts

- Late month rainfall helped to provide some short term improvement in streamflows along the Colorado and Llano River basins
- Unfortunately, the longer running rainfall deficits continue to prevent significant improvement the much of the service area's river basins where most are either in the below or much below normal range for this time of year.
- Medina Lake is now at 2.3 percent capacity, Amistage is 24% capacity, and Canyon Lake has returned to setting daily record low elevations



Explanation - Percentile classes								
	Low	<10	10-24	25-75	76-90	>90	High	No Data
		Much below normal	Below normal	Normal	Above normal	Much above normal		

Figure Caption: [USGS 7 day streamflows for Texas](#), valid July 2, 2024

Reservoir	Pool Elevation	Current Elevation	Percent Full
Amistad	1117.00 feet	1047.17 feet	24.2%
Medina Lake	1064.2 feet	970.51 feet	2.3%
Canyon Lake	909.00 feet	885.01 feet	56.3%
Granger Lake	504.00 feet	504.72 feet	100%
Georgetown Lake	791.00 feet	786.48 feet	85.2%
Lake Buchanan	1020.00 feet	1008.75 feet	76.6%
Lake LBJ	825.00 feet	824.68 feet	98.2%
Lake Marble Falls	738.00 feet	736.38 feet	95.1%
Lake Travis	681.00 feet	634.32 feet	40.6%
Lake Austin	492.9 feet	492.15 feet	95.8%

Table caption: [TWDB Reservoir](#) conditions as of July 2, 2024

Additional data:

[Edwards Aquifer, Bexar Index Well J-17](#) as of July 2, 2024:

10 day average: 631.3

Historical Monthly Average: 659.8

Departure from Average: -31.0



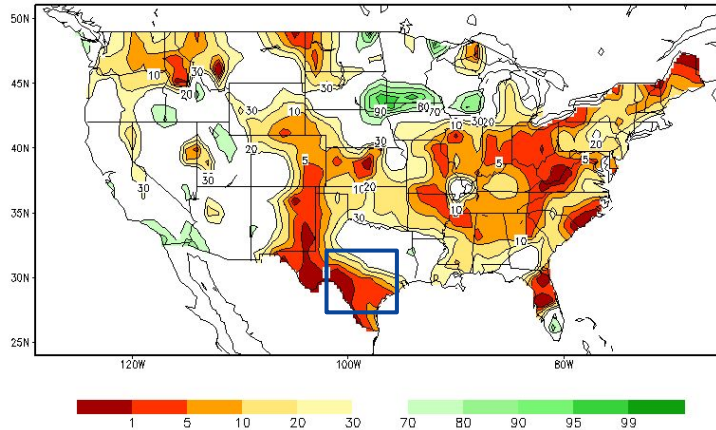


Agricultural Impacts

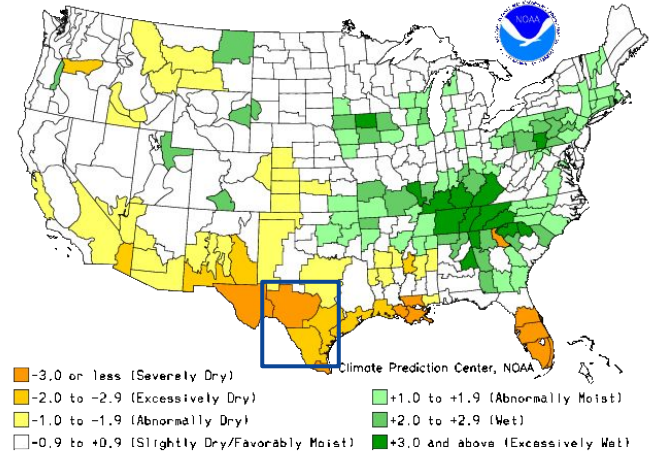
Links to the latest [Soil Moisture Ranking Percentile](#) and [Crop Moisture Index by Division](#).

- Despite some moisture from Tropical Storm Alberto, soil moistures have dropped to well below normal across the entire service area due to numerous hot and dry days
- Crop moisture index values range from abnormally dry to severely dry across the service area

Calculated Soil Moisture Ranking Percentile
JUL 02, 2024



Crop Moisture Index by Division
Weekly Value for Period Ending JUN 29, 2024
Short Term Need vs. Available Water in a Shallow Soil Profile

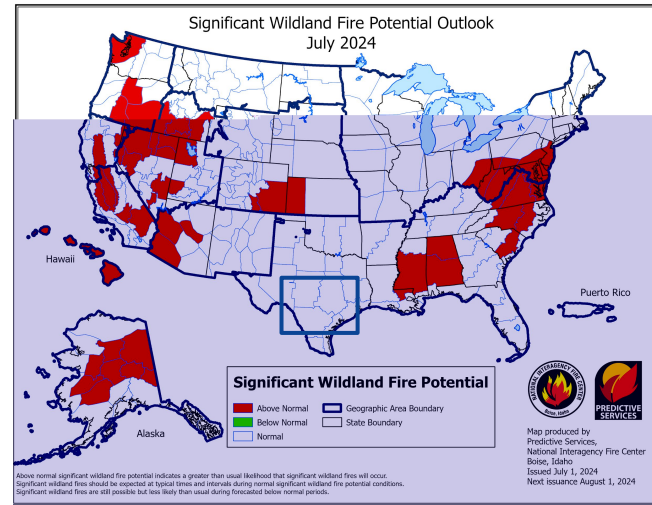
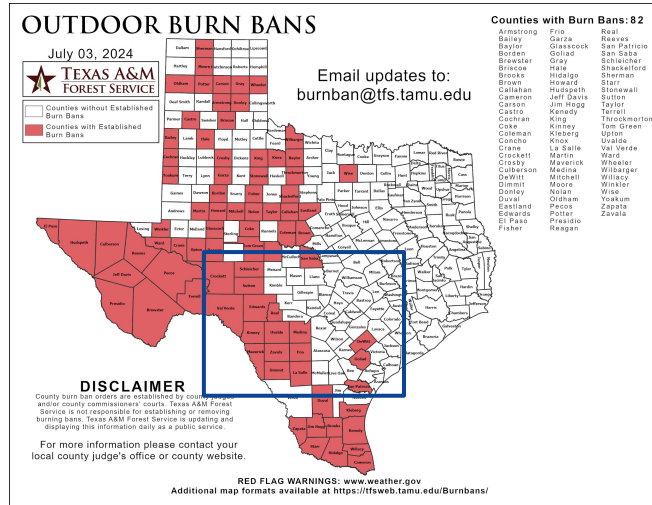




Fire Hazard Impacts

Link to [Wildfire Potential Outlooks from the National Interagency Coordination Center](#).

- [Keetch Byram Drought Index values](#) remain at or below 300 across portions of the the Hill Country, and I-35 corridor
- Values range between 600 and 700 over portions of the southern Edwards Plateau
- Normal wildland fire activity is forecast through the month of July



Burn bans remain for 11 of our 33 counties as of July 3, 2024. Latest County Burn Ban map available [here](#).



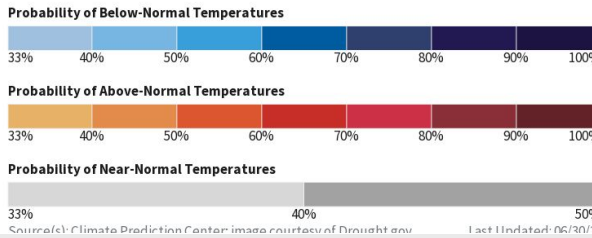
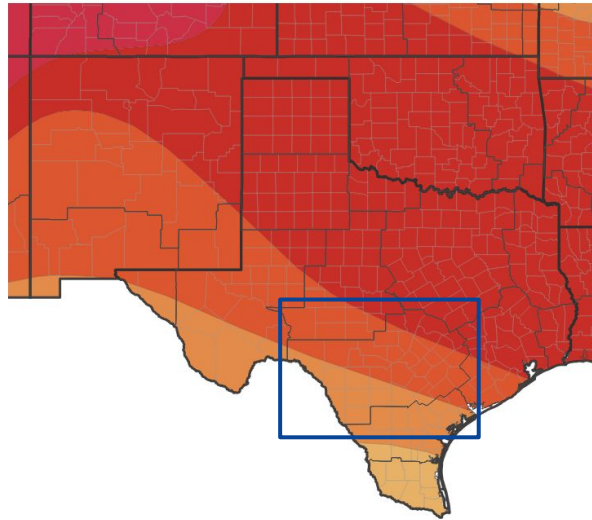


Long-Range Outlooks

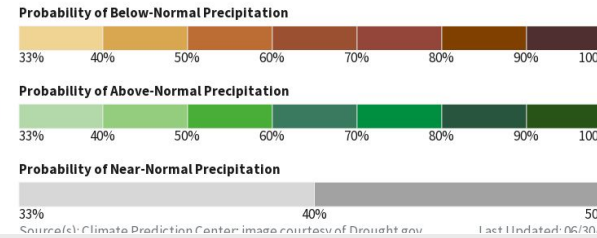
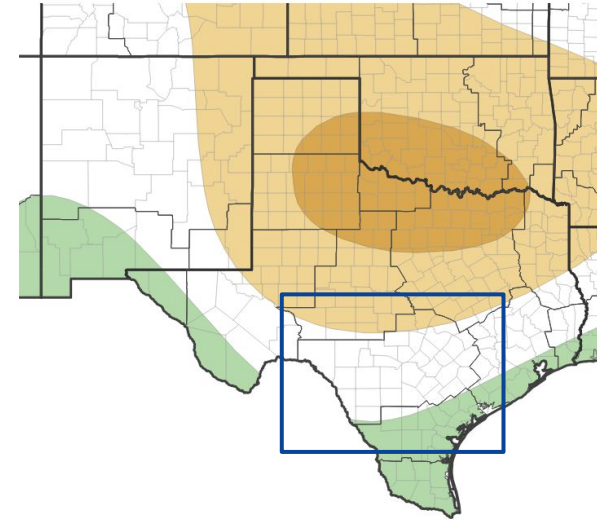
The latest monthly and seasonal outlooks can be found on the [CPC homepage](#)

- The temperature outlook for the month of July show strong chances for above normal temperatures
- The precipitation outlook shows equal chances for above, below, or near normal chances for the month of July across much of the service area
 - There is a leaning towards below normal chances for portions of the Hill Country and I-35 Corridor.
 - There is a slight leaning towards above normal rainfall for a sliver of Maverick and Dimmit Counties

Monthly Temperature Outlook



Monthly Precipitation Outlook



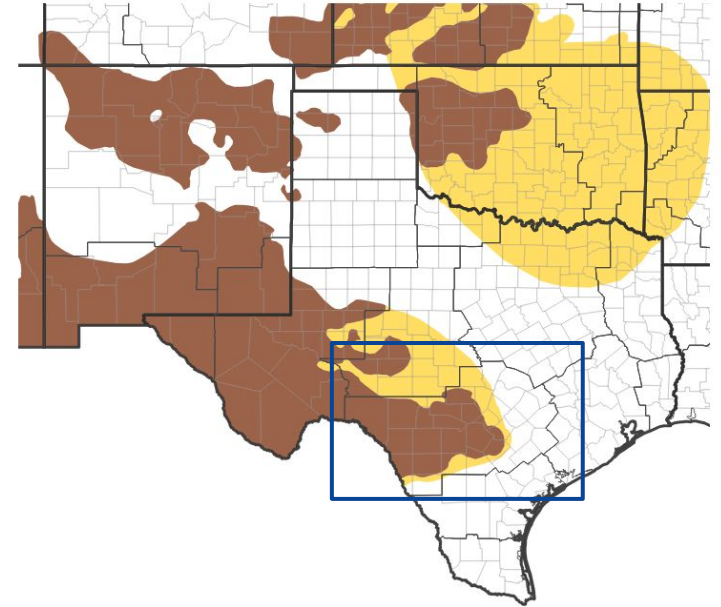


Drought Outlook

The latest monthly and seasonal outlooks can be found on the [CPC homepage](#)

- Drought conditions are forecast to persist across the southern Edwards Plateau, Rio Grande Plains, and portions of the Hill Country and I-35 corridor through the month of July
- Drought conditions are forecast to develop across portions of the I-35 corridor and Hill Country.
- The three month outlook mirrors the monthly outlook with no drought improvement shown through September

1-Month Drought Outlook



Drought Is Predicted To...



Source(s): Climate Prediction Center; image courtesy of Drought.gov

Last Updated: 06/30/24

Links to the latest:

[Climate Prediction Center Monthly Drought Outlook](#)

[Climate Prediction Center Seasonal Drought Outlook](#)



National Oceanic and
Atmospheric Administration

U.S. Department of Commerce

National Weather Service
Austin/San Antonio, TX