



NATIONAL WEATHER SERVICE
OCEANIC AND ATMOSPHERIC ADMINISTRATION



Preliminary Damage Survey

Axtell, NE Tornado Kearney County

Date: May 23rd, 2024

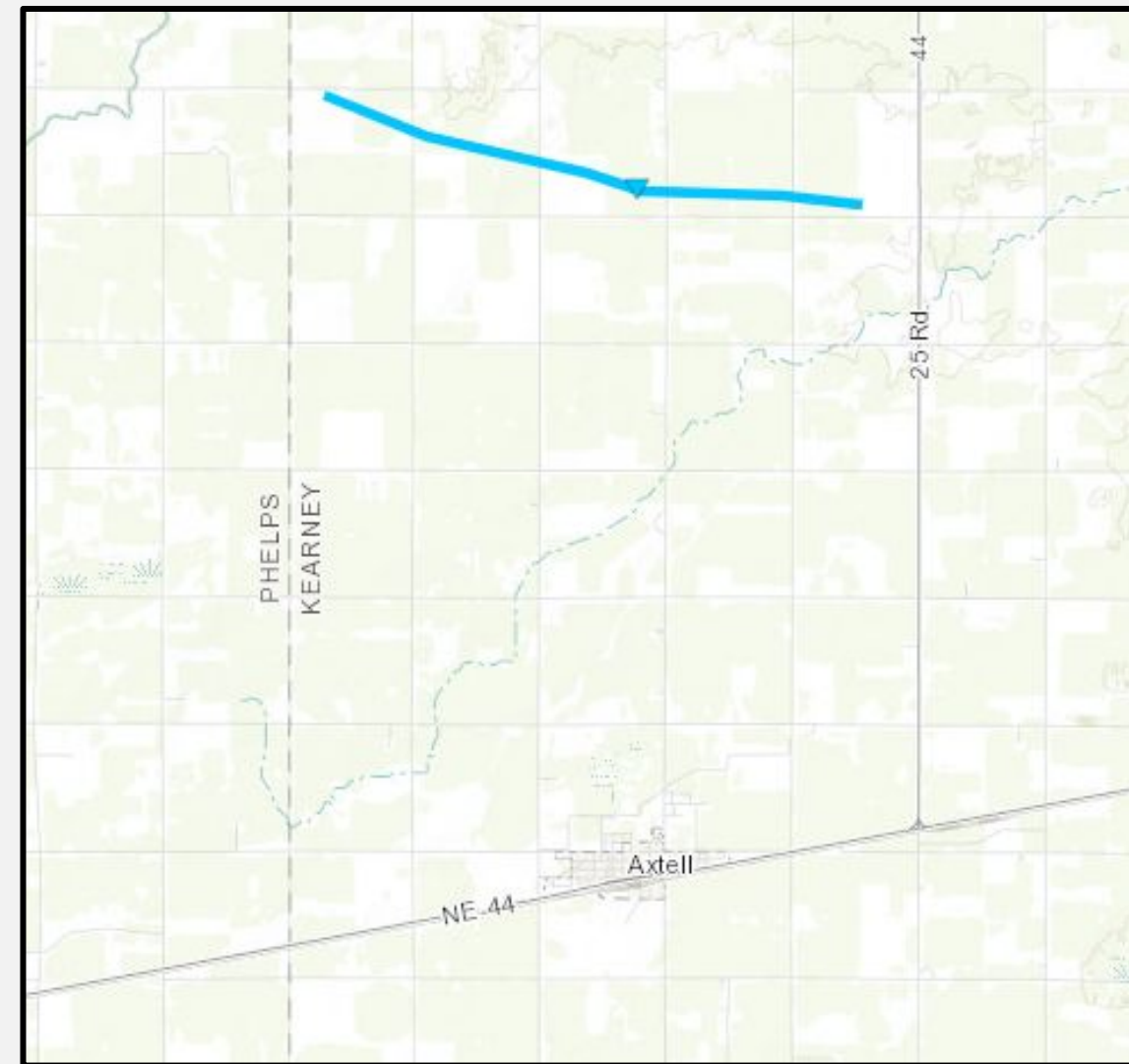
Estimated time: 11:51-11:56 PM CDT

Maximum EF-Scale Rating: EF0

Estimated max winds: 80 MPH

Maximum path width: 75 yards

Path length: 4.37 miles



A local resident reported damage to a pivot and soybean field along the path north of Axtell.

Subsequent radar review depicts a circulation in the same area and time as the report which supports a tornado. Location of the path was estimated based upon radar and the report. The tornado was rated an EF0 with peak winds estimated to be 80 based on the damage described to the pivot.



NATIONAL WEATHER SERVICE
Weather Forecast Office • Hastings, NE



NATIONAL WEATHER SERVICE
OCEANIC AND ATMOSPHERIC ADMINISTRATION



Preliminary Damage Survey

Holdrege, NE Tornado Phelps County

Date: May 23rd, 2024

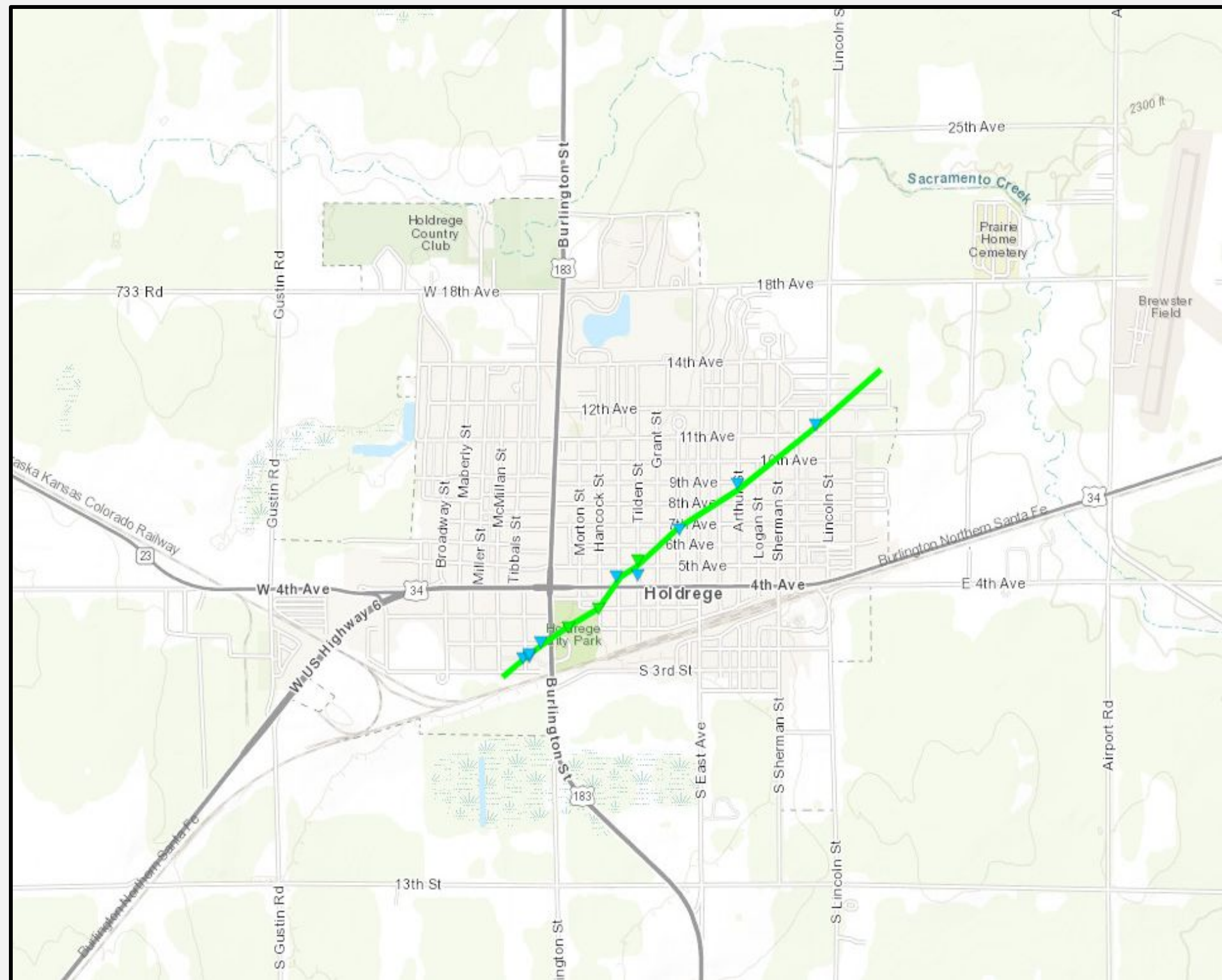
Estimated time: 11:30-11:33 PM CDT

Maximum EF-Scale Rating: EF1

Estimated max winds: 95 MPH

Maximum path width: 100 yards

Path length: 1.71 miles



NATIONAL WEATHER SERVICE
Weather Forecast Office • Hastings, NE

Holdrege, NE Tornado

Preliminary Damage Survey Additional Information

An EF1 rated tornado tracked catty-corner from southwest to northeast across Holdrege.

Much of the damage was noted in trees throughout town. Some large trees were uprooted or snapped. A handful of garages sustained damage. The tornado winds initially damaged the garage door, after which some structural wall damage occurred.

The peak wind speed was estimated at 95 mph based on the damage to both trees and structures along its nearly two mile path.





NATIONAL WEATHER SERVICE
OCEANIC AND ATMOSPHERIC ADMINISTRATION



Preliminary Damage Survey

Heartwell, NE Tornado Kearney County

Date: May 24th, 2024

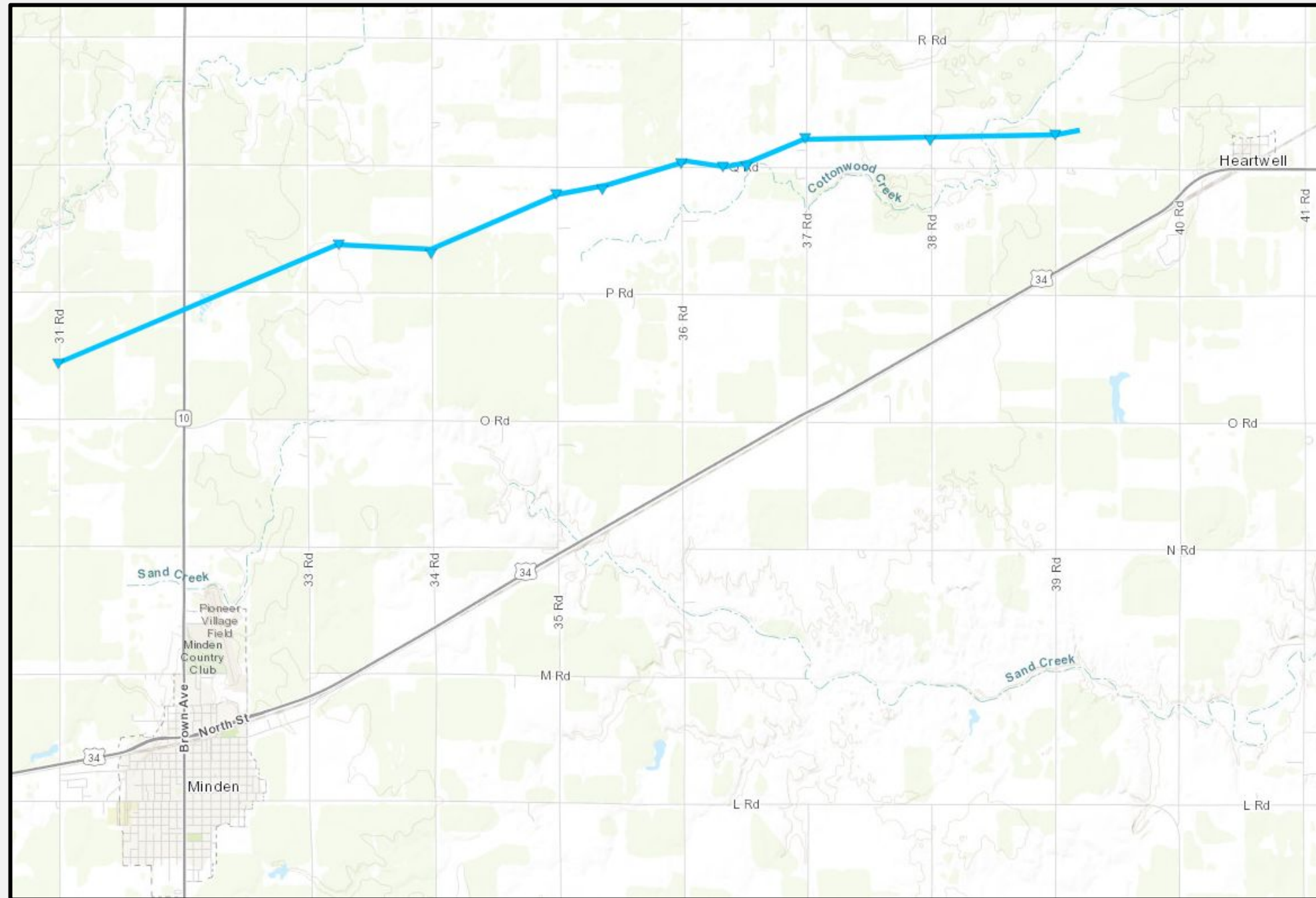
Estimated time: 12:00-12:10 AM CDT

Maximum EF-Scale Rating: EF0

Estimated max winds: 85 MPH

Maximum path width: 60 yards

Path length: 8.54 miles



NATIONAL WEATHER SERVICE
Weather Forecast Office • Hastings, NE

Heartwell, NE Tornado

Preliminary Damage Survey Additional Information

This EF0 rated tornado damaged a handful of pivots and some trees along its over 8 mile path. The peak wind of 85 mph was estimated based upon tree damage near the middle of the path.

This tornado was also noted by a drop in the WSR-88D correlation coefficient product. The drop in the correlation coefficient coincides with the path, but damage was very limited.

One possible theory is the lower correlation coefficient shown on radar was caused by corn stalks from several no-till fields lifted in the air by the tornado.





NATIONAL WEATHER SERVICE
OCEANIC AND ATMOSPHERIC ADMINISTRATION



Preliminary Damage Survey

Palmer, NE Tornado **Howard/Merrick/Nance County**

Date: May 24th, 2024

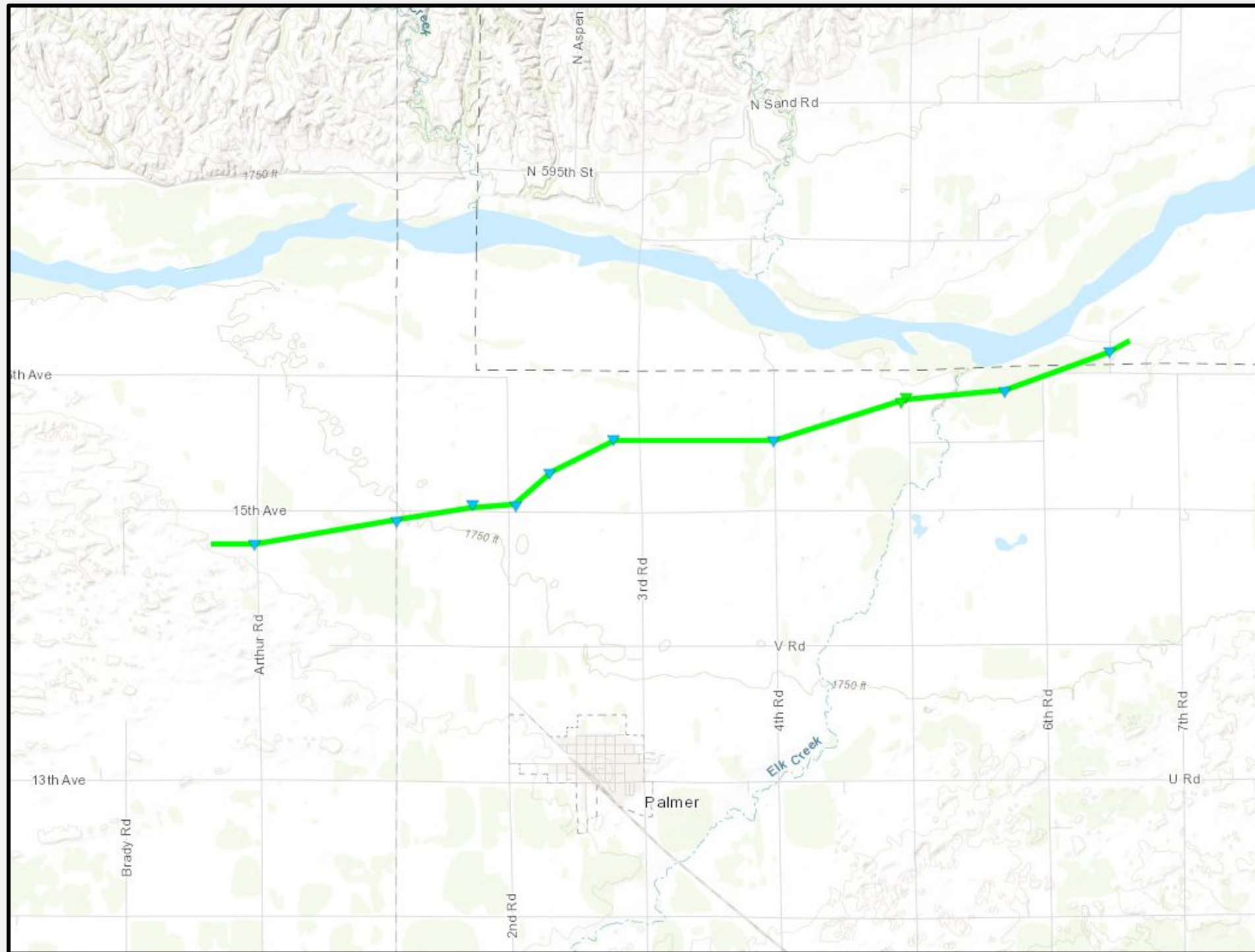
Estimated time: 12:09-12:18 AM CDT

Maximum EF-Scale Rating: EF1

Estimated max winds: 95 MPH

Maximum path width: 95 yards

Path length: 7.11 miles



NATIONAL WEATHER SERVICE
Weather Forecast Office • Hastings, NE

Palmer, NE Tornado

Preliminary Damage Survey Additional Information

This EF1 rated tornado started in extreme eastern Howard County and ended in extreme southern Nance County, but spent most of its travel time in Merrick County north and northeast of Palmer.

There were several spots of tree damage along its roughly 7 mile path. The most significant damage was to an outbuilding and large cottonwood trees northeast of town.

The maximum wind speed of 95 mph was estimated based upon the damage at this particular farmstead.





NATIONAL WEATHER SERVICE
OCEANIC AND ATMOSPHERIC ADMINISTRATION



Preliminary Damage Survey

Silverlake Road Tornado Adams County

Date: May 24th, 2024

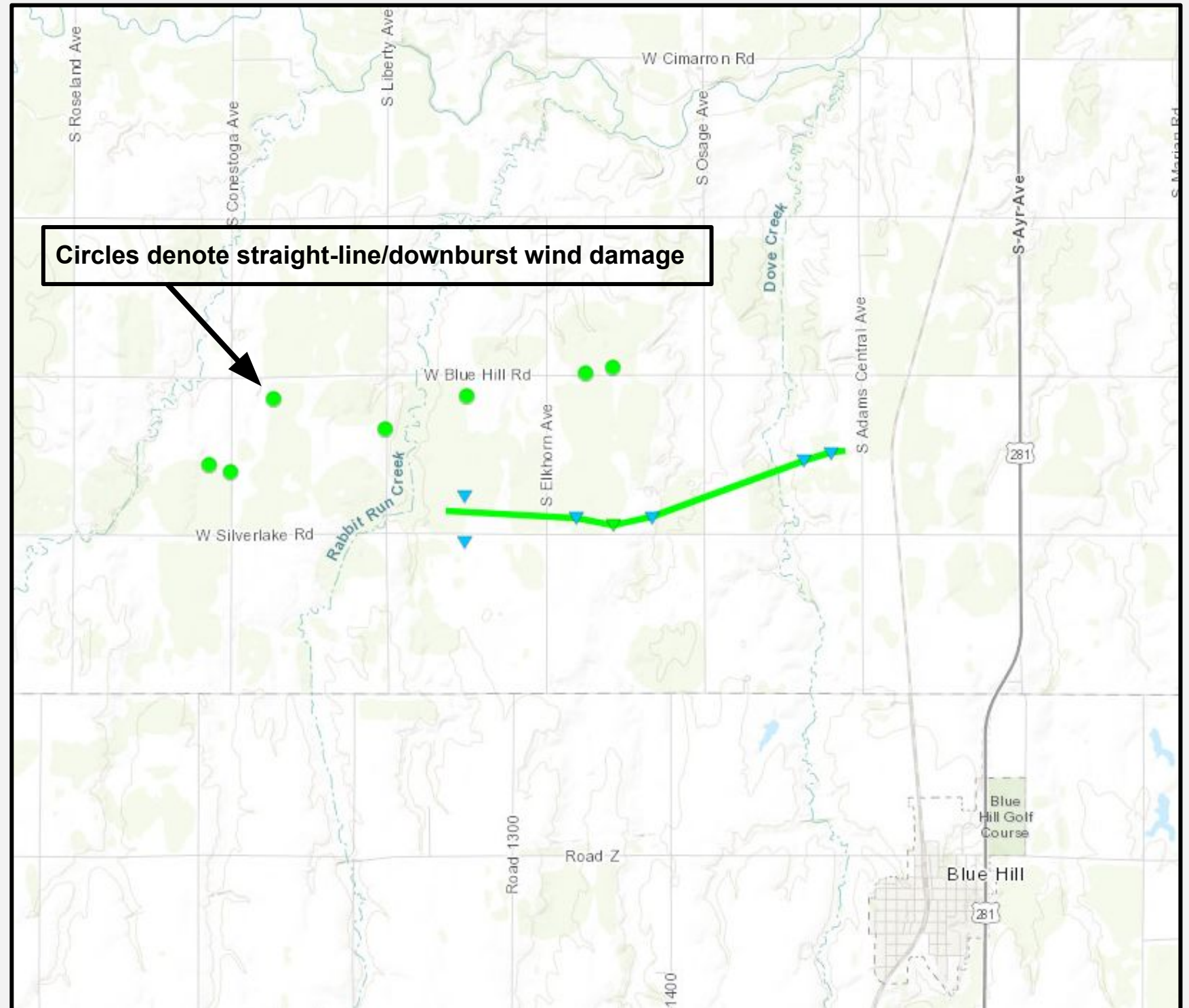
Estimated time: 12:26-12:30 AM CDT

Maximum EF-Scale Rating: EF1

Estimated max winds: 95 MPH

Maximum path width: 80 yards

Path length: 2.61 miles



NATIONAL WEATHER SERVICE
Weather Forecast Office • Hastings, NE

Silverlake Road Tornado

Preliminary Damage Survey Additional Information

A short EF1 tornado moved across far southern Adams County just northwest of Blue Hill.

This tornado had an estimated peak wind of 95 mph based upon damage to a large outbuilding at one farmstead. This included a large door buckling and the east side wall blowing out. There was extensive tree damage as well. Two pivots in particular were damaged, though there were several other pivots flipped in the nearby area. Eventually tornado skipped through another farmstead causing damage to a barn and trees. Unfortunately, three horses were casualties of the storm.

Residents of both farmsteads which sustained damaged were quick to credit the Wire Emergency Alert received on their phone which told them of the tornado warning.

