



# Drought Information Statement for Micronesia

Valid January 5, 2024

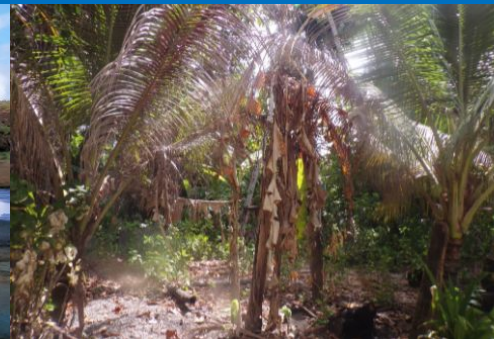
Issued By: WFO Guam

Contact Information: [nws.gum.operations@noaa.gov](mailto:nws.gum.operations@noaa.gov)

- This product will be updated January 19, 2024 or sooner if drought conditions change significantly.
- Please see all currently available products at <https://drought.gov/drought-information-statements>.
- Please visit <https://www.weather.gov/gum/DroughtInformationStatement> for previous statements.



Photo courtesy FSM Adaptation Fund

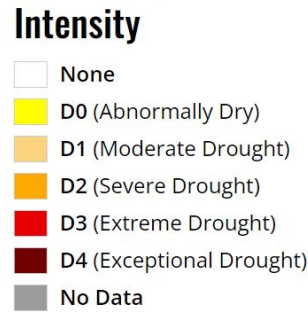
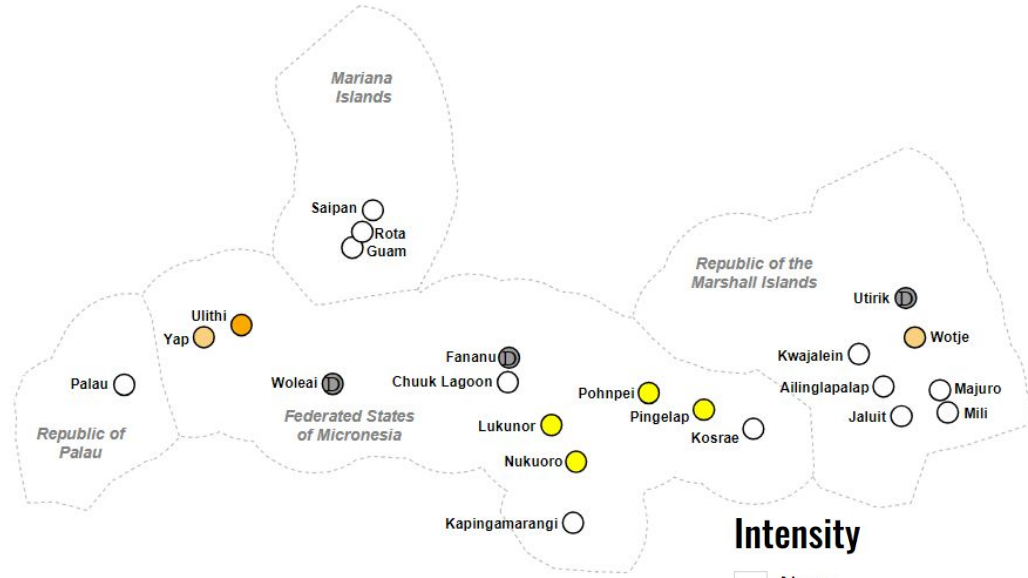




# U.S. Drought Monitor

Link to the [latest U.S. Drought Monitor](#) for Micronesia and the rest of the U.S. Affiliated Pacific Islands

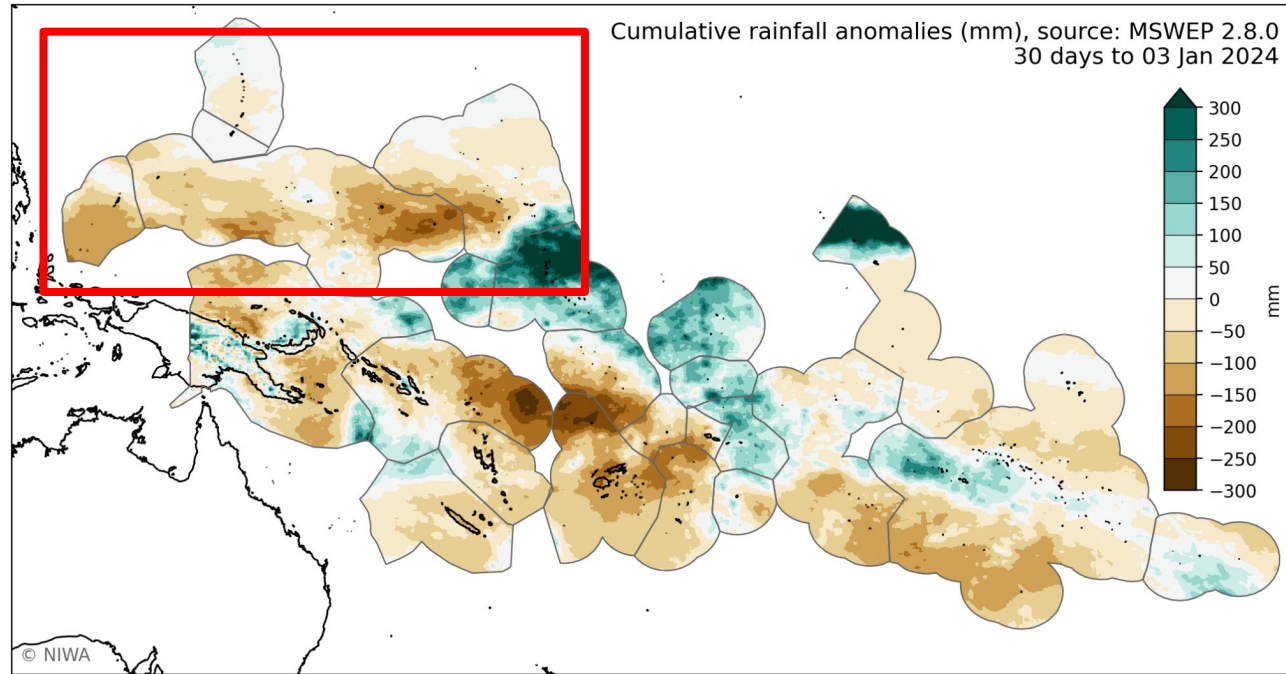
- Drought is expanding across Micronesia
- Drought Intensity
  - **D2 (Severe Drought):** Ulithi and nearby islands of Yap State
  - **D1 (Moderate Drought):**
    - Yap Proper
    - Wotje and nearby islands of the Republic of the Marshall Islands
  - **D0: (Abnormally Dry):**
    - Pohnpei State: Pohnpei, Pingelap, Nukuoro and nearby islands
    - Chuuk State: Lukunor and nearby islands





# Rainfall During the Last 30 Days

- Satellite and rain gauge data show a **large swath of drier than normal conditions across much of Micronesia during the last 30 days.**
- Wetter than normal conditions have anchored the dateline along the equator, including portions of the southern Marshall Islands. This is consistent with El Niño.



Map courtesy of the [National Institute of Water and Atmospheric Research \(NIWA\)](#)





# Summary of Impacts

Links: See/submit [Condition Monitoring Observer Reports \(CMOR\)](#) and view the [Drought Impacts Reporter](#)

## Hydrologic Impacts

- Water catchment levels are likely low on some islands. Water shortages are possible for communities that rely on well water.

## Agricultural Impacts

- There are no known impacts at this time.

## Mitigation Actions

- **Water conservation measures are highly encouraged** as both dry season and the dry phase of El Niño continue to spread across the region.

## Preparedness Actions

- Residents should report agricultural and hydrologic impacts to local DCOs and WSOs. Reports from the islands are critical for decision-making and government responses.

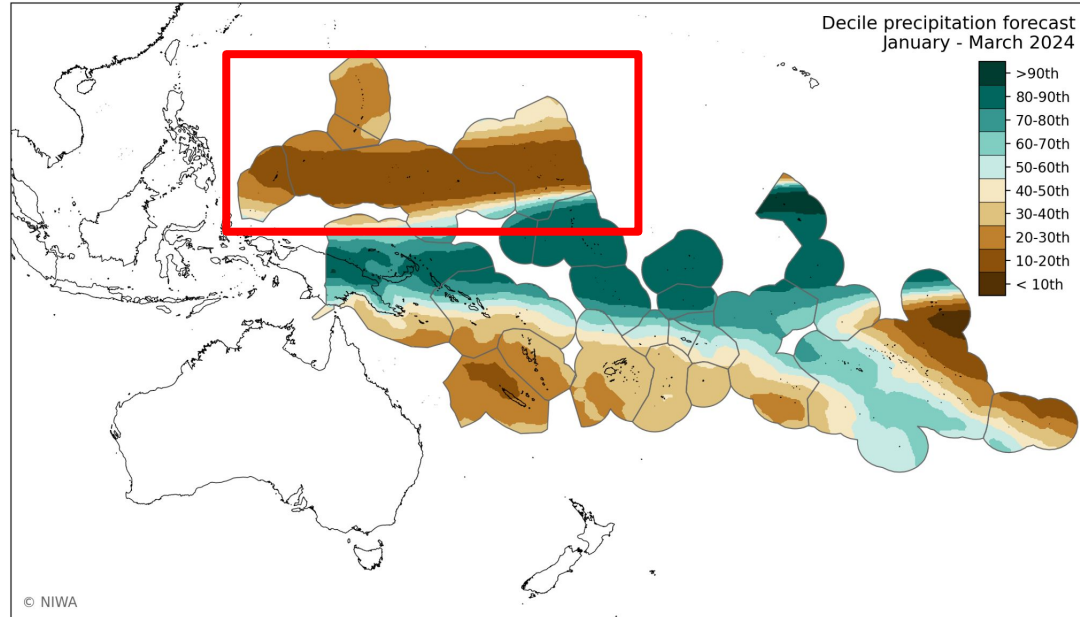




# Drought Outlook

The latest El Niño Southern Oscillation (ENSO) outlook can be found on the [CPC homepage](#)

- The ongoing El Niño will likely lead to worsening drought across much of Micronesia during the next several months
- Previous strong to very strong El Niño events have led to widespread, impactful droughts across Micronesia
  - It is important to note that the current El Niño has evolved differently than other strong to very strong El Niño events of the past. While this increases the uncertainty as to how widespread and impactful drought will be, **islands should prepare for a drier than normal dry season and worsening drought**



Map courtesy of the [National Institute of Water and Atmospheric Research \(NIWA\)](#)

