



# Drought Information Statement for Micronesia

Valid March 1, 2024

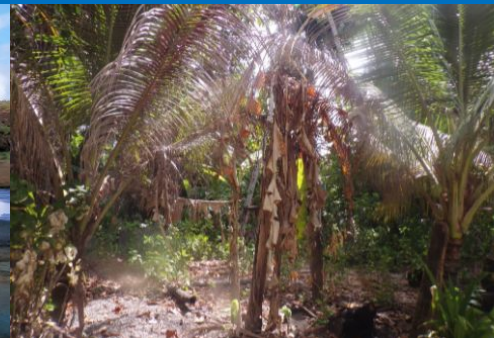
Issued By: WFO Guam

Contact Information: [nws.gum.operations@noaa.gov](mailto:nws.gum.operations@noaa.gov)

- This product will be updated March 15, 2024 or sooner if drought conditions change significantly.
- Please see all currently available products at <https://drought.gov/drought-information-statements>.
- Please visit <https://www.weather.gov/gum/DroughtInformationStatement> for previous statements.



Photo courtesy FSM Adaptation Fund

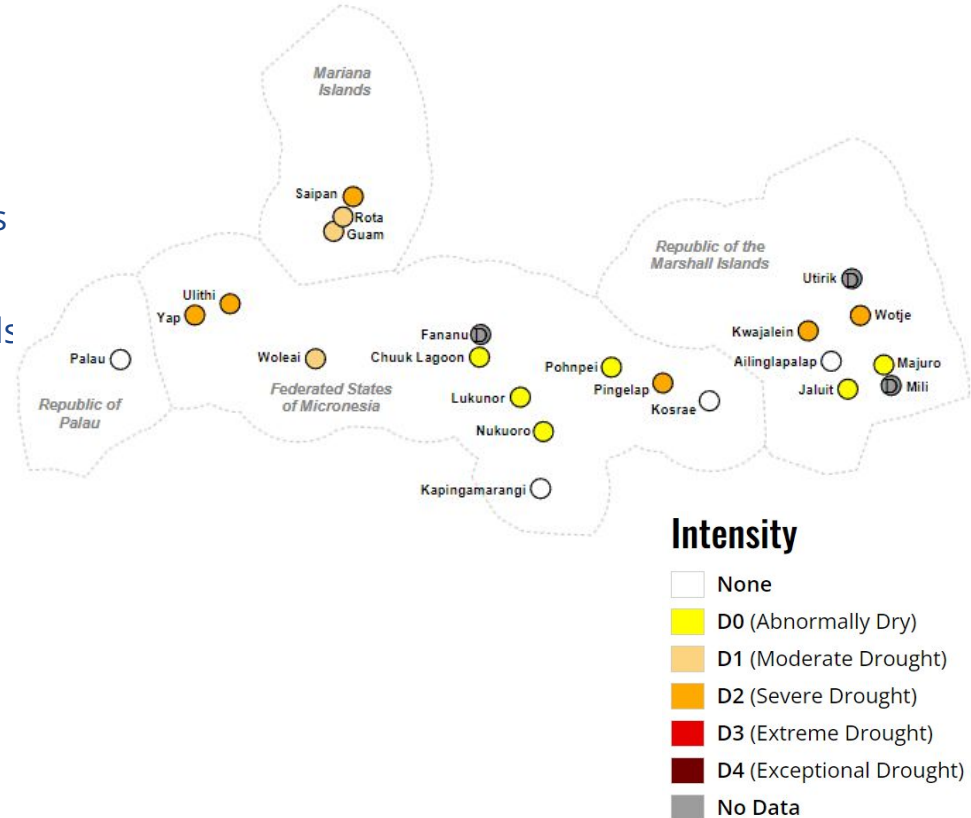




# U.S. Drought Monitor

Link to the [latest U.S. Drought Monitor](#) for Micronesia and the rest of the U.S. Affiliated Pacific Islands

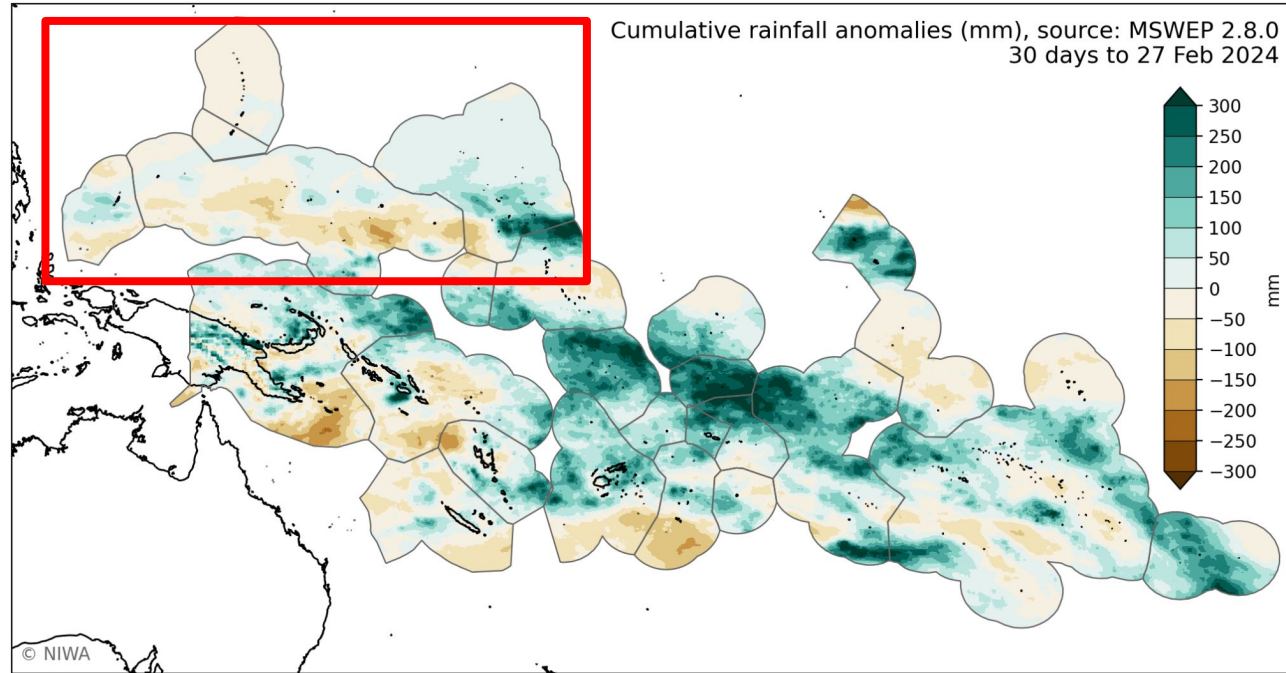
- Drought is expanding across Micronesia
- Drought Intensity
  - **D2 (Severe Drought):**
    - Yap State: Yap, Ulithi and nearby islands
    - Pohnpei State: Pingelap and nearby islands
    - RMI: Wotje, Kwajalein and nearby islands
    - Marianas: Tinian and Saipan
  - **D1 (Moderate Drought):**
    - Chuuk State: Woleai and nearby islands
    - Marianas: Guam and Rota
  - **D0 (Abnormally Dry):**
    - Chuuk State: Chuuk Lagoon, Lukunor, Nukuoro and nearby islands
    - RMI: Majuro, Jaluit and nearby islands





# Rainfall During the Last 30 Days

- Satellite and rain gauge data show a **swath of drier than normal conditions across central Micronesia during the last 30 days (including Pohnpei State, Kosrae State and portions of Chuuk State).**
- Wetter than normal conditions during the last 30 days remain near the Date Line and along the equator, but have extended into the southern RMI. Wetter conditions also continue at Palau.



Map courtesy of the [National Institute of Water and Atmospheric Research \(NIWA\)](#)





# Summary of Impacts

Links: See/submit [Condition Monitoring Observer Reports \(CMOR\)](#) and view the [Drought Impacts Reporter](#)

## Hydrologic Impacts

- Water catchment levels are low on some islands. Water shortages for communities are occurring, especially on the outer islands of **Pohnpei State**, **Yap State**, and **northern RMI**.

## Agricultural Impacts

- A large coastal flooding event on January 20th led to crop damage for select islands of **central and eastern Micronesia**. The state of agricultural recover is unclear at this time.
- Wildfires have been reported on **Guam**, with one event burning through a reforestation project.

## Mitigation Actions

- **Water conservation measures are highly encouraged** as both dry season and the dry phase of El Niño continue to spread across the region.

## Preparedness Actions

- Residents should report agricultural and hydrologic impacts to local DCOs and WSOs. Reports from the islands are critical for decision-making and government responses.

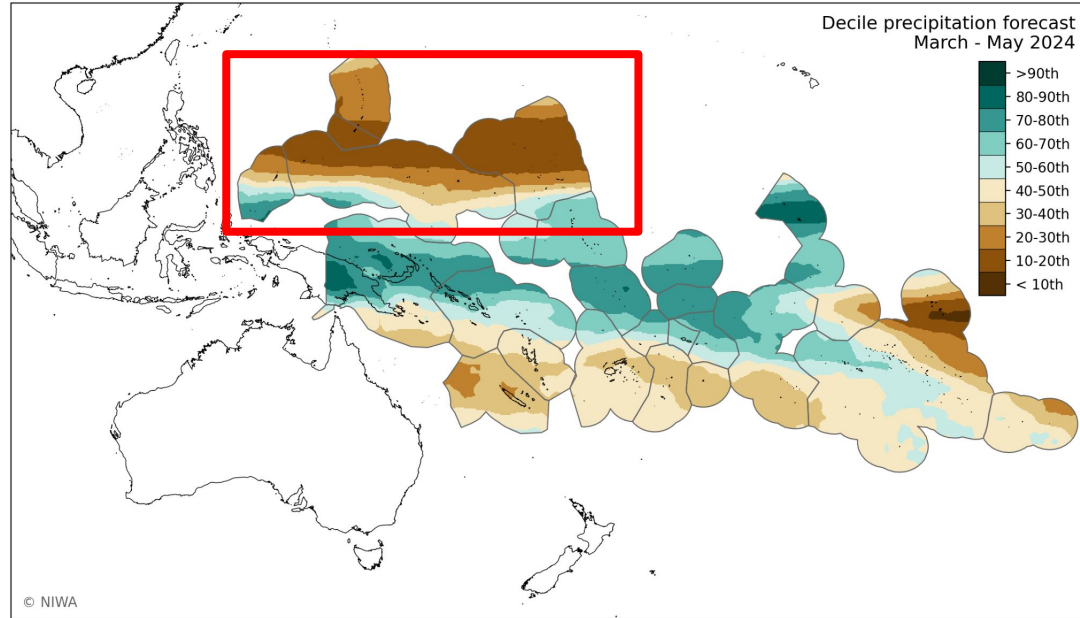




# Drought Outlook

The latest El Niño Southern Oscillation (ENSO) outlook can be found on the [CPC homepage](#)

- **Worsening drought is favored across much of Micronesia, especially islands near and north of 5N.**
- **Short-term (1-3 Weeks Outlook)**
  - Global model consensus and the Madden-Julian Oscillation favor a drier than normal pattern over much of the region through the middle of March. See [CPC - Global Tropics Hazard Outlook](#) for more info.
- **Seasonal (3 Month Outlook)**
  - The rainfall forecast through May remains drier than normal for islands near and north of 5N latitude.



Map courtesy of the [National Institute of Water and Atmospheric Research \(NIWA\)](#)

