



# National Weather Service

## Storm Data and Unusual Weather Phenomena



February 2002

Location	Date	Time Local/ Standard	Path Length (Miles)	Path Width (Yards)	Number of Persons Killed	Number of Persons Injured	Estimated Damage Property	Estimated Damage Crops	Character of Storm
----------	------	----------------------------	---------------------------	--------------------------	--------------------------------	---------------------------------	---------------------------------	------------------------------	--------------------

### CALIFORNIA, South Central

CAZ089>092

W Central Sj Valley - E Central Sj Valley - Sw Sj Valley - Se Sj Valley

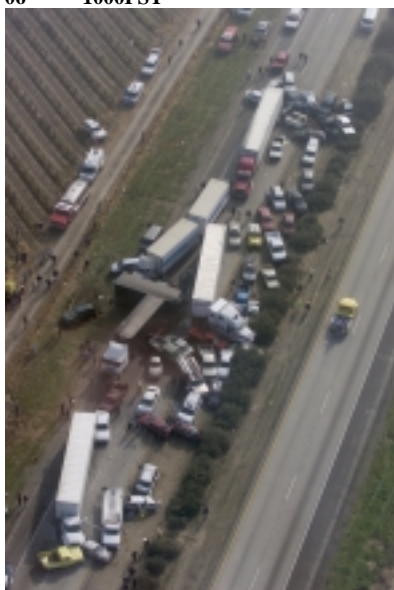
01	0000PST	0	0		<b>Extreme Cold</b>
06	0830PST				

Continuing into the month of February from late January, Interior Central California had a period of very low temperatures that threatened late season citrus. No major damage was reported by local agricultural commissioners in regard to the low temperatures. The lowest readings were reported on the mornings of the 1st, 2nd, and 3rd. Temperatures dipped to 25 deg F. at the coldest locations with durations of 3 hours at less than 28F at Riverbend and Navelencia, SE of Fresno. Overnight low temperatures began to moderate with widespread temperatures still less than 32F through the morning of the 6th but not nearly as cold as the first 3 mornings of the month.

CAZ089>092

W Central Sj Valley - E Central Sj Valley - Sw Sj Valley - Se Sj Valley

05	0253PST	3	40	450K	<b>Fog</b>
06	1000PST				



Dense Fog formation throughout the Central and Southern San Joaquin Valley occurred on both the mornings of the 5th and 6th. Fog was the most dense on the 5th when widespread visibilities as low as 50 feet were reported by the California Highway Patrol and a resulting multiple-vehicle accident involving 87 cars and trucks 20 miles southeast of Fresno left 3 dead and approximately 40 injured. (Photo courtesy of the Fresno Bee). F32VE, M76VE, F34VE

CAZ091>092

Sw Sj Valley - Se Sj Valley

09	2030PST	0	0	250K	<b>Wind</b>
10	1500PST				

Downslope, strong southeast wind swept the southern portions of the San Joaquin Valley concurrently with Santa Ana winds buffeting the Los Angeles Basin. In the South Valley, numerous power lines, trees, and fences were downed due to the winds that reached 37 MPH as reported at Meadows Field, Bakersfield, late in the morning of the 10th. Minor damage from the wind was reported as far north as Corcoran in Kings County. At one point there were 6900 customers without power in the South Valley. Blowing dust was also a problem in and around the Arvin/Bakersfield area. With the warming, temperatures climbed to 80 degs F at Arvin and 75F at Bakersfield on the 10th despite this being a winter month.

