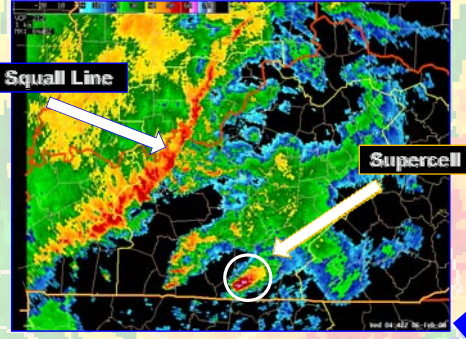
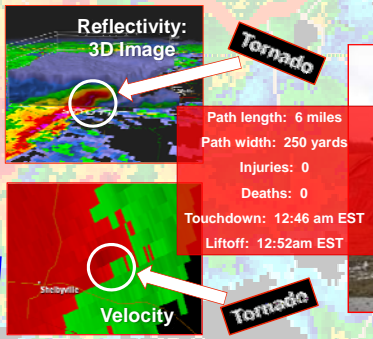
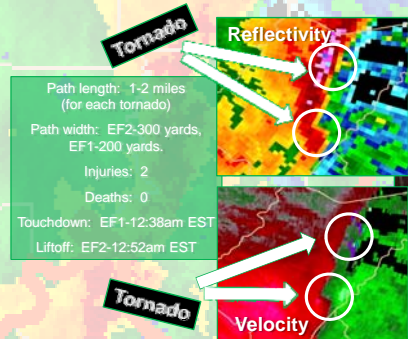


SUPER TUESDAY FEBRUARY 5-6, 2008 TORNADO OUTBREAK!



A low pressure system formed across the Southern Plains on February 4, and moved into the Ohio Valley the night and early morning of February 5 and 6. Ahead of the low, record warmth occurred on February 4 and 5 with highs in the mid to upper 70s in central Kentucky and lower 80s farther south. The unseasonably high temperatures combined with abundant moisture created high instability for February across the Ohio River Valley. In addition, strong winds near the ground and within the jet stream in the upper atmosphere, resulted in intense vertical wind shear. These factors were the main ingredients associated with this record tornado outbreak. There were two main tornado producers in Kentucky, a squall line that spawned numerous short-duration EF0-EF2 tornadoes, and potent supercells ahead of the squall line over South-Central Kentucky.



SQUALL LINE

SUPERCELLS

Central Kentucky Totals:

| | |
|-------------------|-----------------------|
| Reported Tornado: | 25 |
| Number of Deaths: | 7 total |
| | 3 - Muhlenberg County |
| | 4 - Allen County |

"It's really just overwhelming to see the mass destruction. I mean there's just nothing left. There were three houses here (Allen County), now there's nothing left but rubble. You can't find anything to keep. It's devastating."
 -Murray Lamb, WBKO-Bowling Green, KY

