

# TORNADO!



Zoneton Estates in Bullitt County. Photo courtesy Jeff Schaefer.

## An Evening to Remember...

May 28, 1996 will forever be remembered by residents in southern Indiana and north-central Kentucky who survived a devastating tornado. The sight of the F4 tornado was horrific as it roared across the countryside demolishing everything in its path. Luckily, no deaths occurred, but the tornado injured ten residents and damaged over 1,000 homes in parts of Jefferson, Bullitt, and Spencer counties in Kentucky.

Brooks in Bullitt County, KY. Photo courtesy Mark Lenberger.



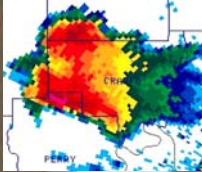
# May 28, 1996

*"It felt like a freight train. It seemed like hours." ----- Sharon Hester, Pioneer News, June 3, 1996*

4:48 pm EDT: A severe storm developed over southern Dubois County in Indiana...



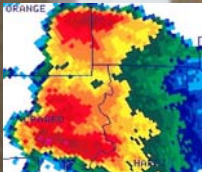
5:18 pm EDT: The supercell storm split in two over western Crawford County, Indiana...



## The Birth and Life of a Devastating F4 Twister

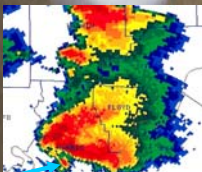
On the afternoon of May 28, 1996, a powerful thunderstorm developed over southwestern Dubois County, Indiana, and headed east. As it moved toward Crawford County, the storm split into two separate entities, with one moving to the northeast and the other to the southeast. Both storms produced large hail, but it was the southern, "right-moving" storm that brought significant destruction to the area.

5:38 pm EDT: The southern storm grew stronger and dropped golf ball sized hail on Crawford County for thirty minutes...



After producing a tornado of F2 strength along a 10 mile path in Harrison County, Indiana, the supercell storm crossed the Ohio River into Kentucky. After dropping hail the size of quarters around Valley Station, Kentucky, a new tornado quickly formed over Jefferson Memorial Forest, cutting a wide gash through the woods.

6:03 pm EDT: The southern storm intensified, and produced an F2 tornado south of Corydon in Harrison County, Indiana...

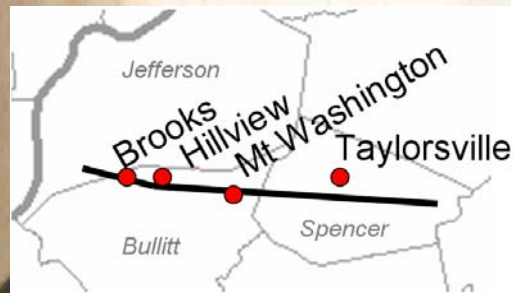
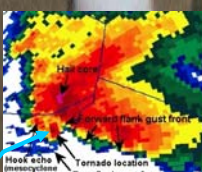


The tornado quickly gained strength and charged across Bullitt County, bringing great destruction to Brooks, Hillview, and Mount Washington. Witnesses reported multiple vortices swirling around the tornado, and suffered F3-F4 damage to their homes and businesses.



Video capture from northern Bullitt County. Courtesy WAVE-TV.

6:58 pm EDT: An F4 multiple-vortex tornado chewed through northeast Bullitt County, Kentucky...



6:58 pm EDT: Doppler radar velocity data showed an impressive circulation near Mount Washington associated with the tornado...



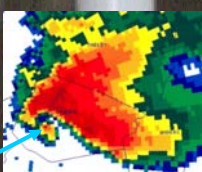
Exhibiting a classic "hook echo" on National Weather Service Doppler radar, the twister then churned across Spencer County, producing F3 damage, before dissipating east of Taylorsville.

The storm was responsible for over \$100,000,000 in damages. Fortunately, thanks to effective warnings and quick public action, there were no fatalities.



Pioneer Village Subdivision in Bullitt County.

7:13 pm EDT: The tornado then headed for Taylorsville Lake in Spencer County before lifting east of the lake.



Path length: 30 miles  
 Path width: 1/2 mile  
 Injured: 10 people  
 Cost: \$101,000,000

Source: Storm Data



<http://weather.gov/louisville>