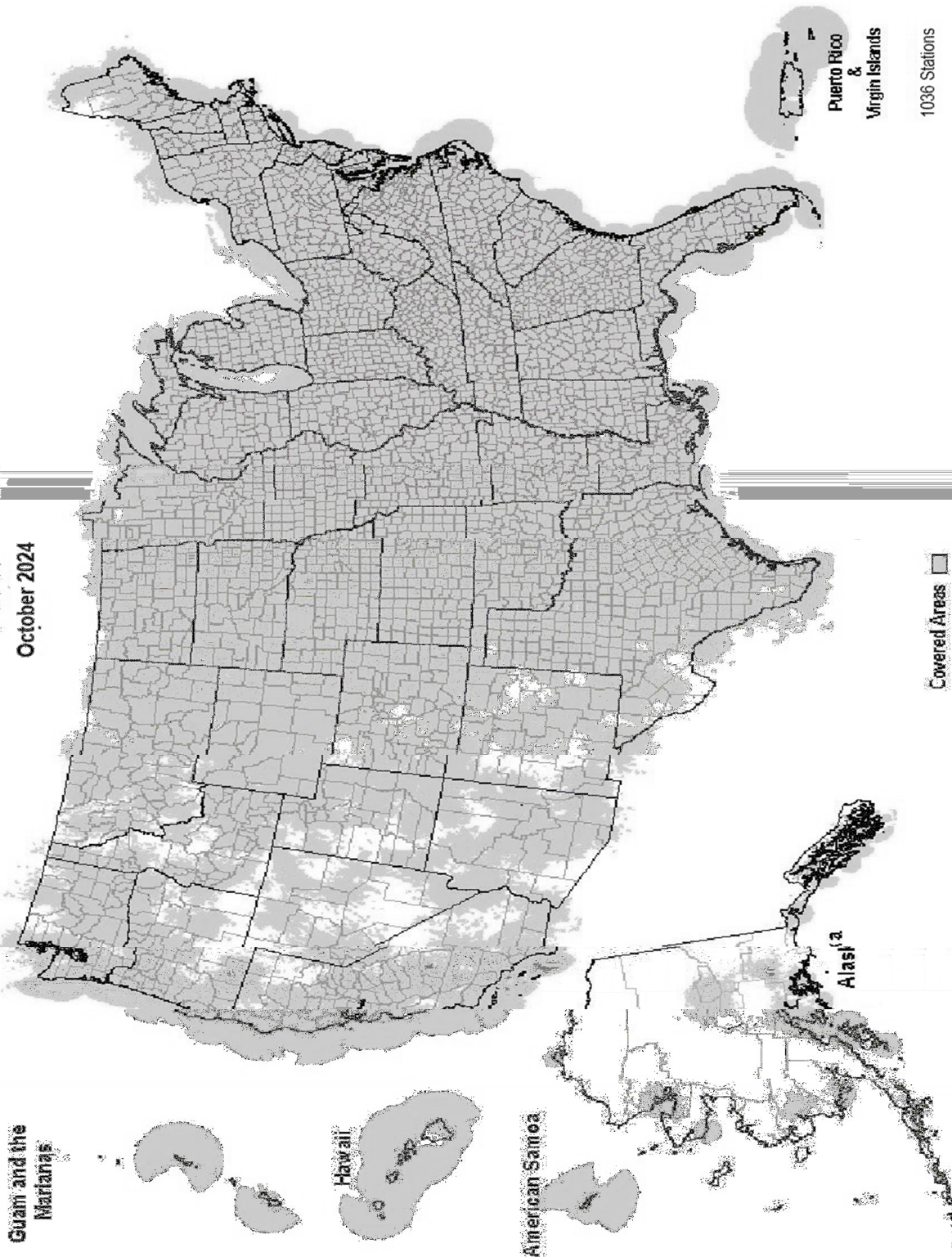


NOAA Weather Radio RF Coverage

October 2024



Guam and the
Marianas

Hawaii

American Samoa

Alaska

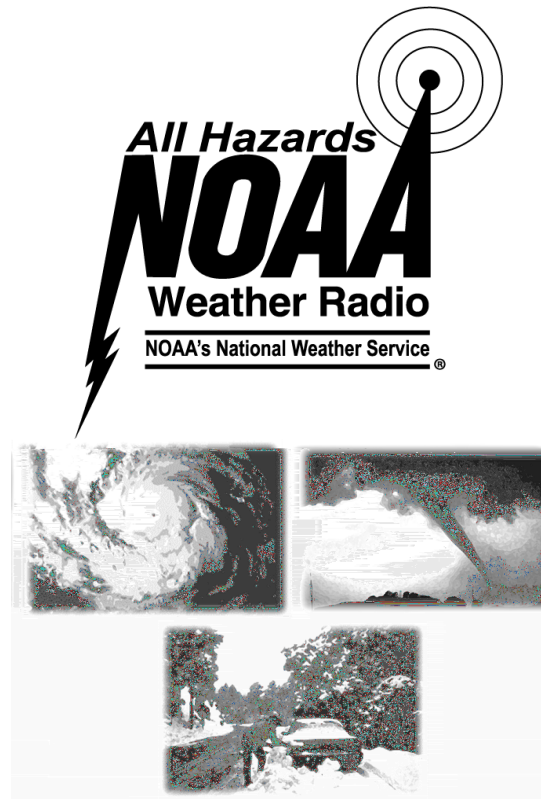
Puerto Rico
&
Virgin Islands

Covered Areas

1036 Stations



NOAA/PA 94062
Rev October 2024



All Hazards
NOAA
Weather Radio
NOAA's National Weather Service

The Voice of NOAA's National Weather Service

< Over 1000 Transmitters >

Broadcasting Continuous
Weather Information on the
Following Frequencies:

- 162.400 MHz
- 162.425 MHz
- 162.450 MHz
- 162.475 MHz
- 162.500 MHz
- 162.525 MHz
- 162.550 MHz

U.S. Department of Commerce
National Oceanic and Atmospheric Administration
National Weather Service

<http://www.weather.gov/nwr/>

NOAA WEATHER RADIO

The Voice of NOAA's National Weather Service

<http://www.weather.gov/nwr>

NOAA Weather Radio is a service of the National Oceanic and Atmospheric Administration (NOAA) of the U.S. Department of Commerce. As the "voice of the National Weather Service," it provides continuous broadcasts (24 hours a day) of the latest weather information from local National Weather Service offices. Weather messages are repeated every 4 to 6 minutes and are routinely updated every 1 to 6 hours or more frequently in rapidly changing local weather or if a nearby natural hazardous or manmade condition exists.



The regular broadcasts are specifically tailored to weather information needs of the people within the service area of the transmitter. For example, in addition to general weather information, stations in coastal areas provide information of interest to mariners. Other specialized information, such as hydrological forecasts and other climate data may be broadcast.

During severe weather, National Weather Service forecasters can interrupt the routine weather broadcasts and insert special warning messages concerning imminent threats to life and property. The forecaster can also add special signals to warnings that trigger "alerting" features of specially equipped receivers. In the simplest case, this signal activates audible or visual alarms, indicating that an emergency condition exists within the broadcast areas of the station being monitored, and alerts the listener to turn up the volume and stay tuned for more information. More sophisticated receivers are automatically turned on and set to an audible volume when an alert is received.

In the most sophisticated alerting system, NOAA Weather Radio Specific Area Message Encoding (SAME), digital coding is employed to activate only those special receivers programmed for specific emergency conditions in specific area, typically a county. SAME can activate specially equipped radio and cable television receivers and provide a short text message that identifies the location and type of emergency. SAME is the primary activator for the FCC Emergency Alert System (EAS).

To program NWR SAME receivers with the proper county(s) and marine area(s) of choice, you need to know the 6-digit SAME code number(s) for that county(s). Once you have your code number(s), follow the manufacturer's directions for programming your NWR SAME receiver. You can obtain your SAME code numbers by dialing:

888-NWR-SAME (888-697-7263) – Voice & TTY/TTD Accessible

Under a January 1975 White House policy statement, NOAA Weather Radio was designated the sole Government-operated radio system to provide direct warning into private homes for both

San Juan	162.400
RHODE ISLAND	
Providence	162.400
SOUTH CAROLINA	
Aiken	162.450
Aynor	162.400
Barnwell	162.500
Beaufort	162.450
Charleston	162.550
Cheraw	162.450
Columbia	162.400
Cross	162.475
Florence	162.550
Georgetown	162.500
Greenville	162.550
Kirksey	162.425
Orangeburg	162.525
Rock Hill	162.425
Savannah	162.400
Sumter	162.425
SOUTH DAKOTA	
Aberdeen	162.475
Arlington	162.525
Faith	162.475
Firesteel	162.425
Hot Springs	162.425
Lead	162.525
Lowry	162.500
Mitchell	162.450
Philip	162.450
Pickstown	162.425
Pierre	162.400
Porcupine	162.500
Rapid City	162.550
Reliance	162.525
Sioux Falls	162.400
South Shore	162.425
Wessington	162.550
White River	162.550
TENNESSEE	
Bristol	162.550
Centerville	162.450
Chattanooga	162.550
Clarksville	162.500
Clifton	162.500
Cookeville	162.400
Dyersburg	162.500
Hickman	162.500
Jackson	162.550
Knoxville	162.475
La Follette	162.450
Lafayette	162.525
Lawrenceburg	162.425
Lobelville	162.525
Memphis	162.475
Nashville	162.550
Shelbyville	162.475
Spencer	162.450
Vale	162.450
Waverly	162.400
Winchester	162.525
TEXAS	
Ablene	162.400
Alpine	162.550
Amarillo	162.550
Austin	162.400
Bay City	162.425
Beaumont	162.475
Big Spring	162.400
Brownsville	162.550
Bryan	162.550
Burkeville	162.425
Carrizo Springs	162.550
Center	162.525
Childress	162.525
Cisco	162.500
Coleman	162.475
Corpus Christi	162.550
Corsicana	162.525
Cumby	162.500
Dalhart	162.425
Dallas	162.400
Del Rio	162.400
D'Hanis	162.525
Dickens	162.500
Dilley	162.500
El Paso	162.475
El Paso Spanish	162.550
Fort Worth	162.550
Galveston	162.550
Gilmer	162.425
Gonzales	162.525
Guadalupe Mt Nat'l. Park	162.525
Junction	162.475
Kerrville	162.450
La Grange	162.500
Laredo	162.475
Llano	162.425
Lubbock	162.400
Lufkin	162.550
Marietta	162.525
Miami	162.450
Midland/Odessa	162.400
Milano	162.525
Mineral Wells	162.525
Muenster	162.425
New Taiton	162.450
Onalaska	162.500
Ozona	162.500
Palestine	162.450
Paris	162.550
Pecos	162.450
Perryton	162.475
Pharr	162.400
Pharr Spanish	162.475
Plainview	162.450
Port O'Connor	162.475
Richland Springs	162.525
Richmond	162.475
Rio Grande City	162.425
Riviera	162.525
San Angelo	162.550
San Antonio	162.550
Santa Maria Spanish	162.450
Seguin	162.475
Seminole	162.425
Sherman	162.475
Stephenville	162.450
Stinnett	162.400
Stratford	162.525
Summerfield	162.500
Sweetwater	162.425
Texarkana	162.550
Three Rivers	162.450
Throckmorton	162.425
Tomball	162.400
Tyler	162.475
Uvalde	162.425
Victoria	162.400
Waco	162.475
Wichita Falls	162.475

UTAH		Charleston	162.400
Bear Lake	162.500	Clarksburg	162.550
Castle Dale	162.500	Garfield	162.500
Coalville/ Park City	162.475	Gilbert	162.475
Escalante	162.425	Greggs Knob	162.500
Lake Powell	162.550	Hinton	162.425
Logan	162.400	Monterville	162.525
Manti	162.425	Moorefield	162.400
Milford/Cedar City	162.400	Morgantown	162.475
Moab	162.475	Sutton	162.450
Monticello	162.450	WISCONSIN	
Salt Lake City	162.550	Ashland	162.525
St. George	162.475	Baraboo	162.450
Tabiona	162.550	Black River Falls	162.500
Tooele (South Mountain)	162.450	Coloma	162.400
Tooele (Vernon Hills)	162.525	Crandon	162.450
Vernal	162.400	Dubuque	162.400
Wendover	162.475	Fond Du Lac	162.500
VERMONT		Green Bay	162.550
Burlington	162.400	Gresham	162.500
Castleton	162.500	Janesville	162.425
St. Johnsbury	162.425	Ladysmith	162.550
Windsor	162.475	Madison	162.550
VIRGIN ISLANDS		Menomonie	162.400
St. Thomas	162.450	Milwaukee	162.400
VIRGINIA		New London	162.525
Accomack	162.525	Park Falls	162.500
Covesville	162.450	Prairie Du Chien	162.500
Covington	162.450	Racine	162.450
Fredericksburg	162.425	Rhineland	162.400
Heathsville	162.400	Richland Center	162.475
Lynchburg	162.550	Sheboygan	162.525
Manassas	162.550	Sister Bay	162.425
Norfolk	162.550	Spoooner	162.475
Providence Forge	162.500	Tomah	162.525
Richlands	162.425	Wausau	162.475
Richmond	162.475	Wausaukee	162.400
Roanoke	162.475	Winona	162.425
Sand Mtn	162.450	Withee	162.425
South Boston	162.525	WYOMING	
WASHINGTON		Afton	162.475
Astoria	162.400	Casper	162.400
Capitol Peak	162.475	Cheyenne	162.550
Cle Elum	162.400	Cody	162.400
Davis Peak	162.525	Dubois	162.450
Dayton	162.525	Elk Plaza	162.425
Forks	162.425	Evanston	162.450
H Street - Blaine Area	162.525	Gillette	162.500
Neah Bay	162.550	Glendo	162.450
Okanogan	162.525	Grant Village	162.450
Plymouth	162.425	Jackson	162.525
Puget Sound Marine	162.425	Kaycee	162.550
Randle	162.425	Kemmerer	162.525
Richland	162.450	Lander	162.475
Seattle	162.550	Newcastle	162.475
Spokane	162.400	Pinedale	162.500
Wenatchee	162.475	Rawlins	162.425
Yakima	162.550	Rock Springs	162.550
WEST VIRGINIA		Sheridan	162.475
Backbone Mountain	162.450	Thermopolis	162.500
Beckley	162.550	Worland	162.525

As of October 2024 NOAA is operating 1036 stations across the United States and its territories.

The National Weather Service requests your assistance in reporting any outages of NOAA Weather Broadcast Stations.

Please use our Toll Free Number (888) 697-7263 or send an Email to nwroutage@noaa.gov to report the outage.

Doniphan	162.450	Ord	162.525
El Dorado Springs	162.475	Oshkosh	162.525
Eldon	162.550	Scottsbluff	162.475
Fordland	162.400	Shubert	162.500
Fredericktown	162.500	Sidney	162.500
Gainesville	162.425	Superior	162.525
Hannibal	162.475	Trenton	162.500
Hawk Point	162.425	Valentine	162.450
Hermitage	162.450	Yankton	162.500
Jamestown	162.425		
Joplin	162.550		
Kansas City	162.550		
La Plata	162.525		
Lancaster	162.550		
Maryville	162.425		
Medill	162.450		
Neosho	162.450		
Piedmont	162.425		
St. Louis	162.550		
Summersville	162.475		
Trenton	162.500		
Wardell	162.525		
West Plains	162.525		

MONTANA

Baker	162.550
Belgian Hill	162.500
Billings	162.550
Bozeman	162.500
Broadus	162.425
Browning	162.525
Butte	162.550
Circle	162.550
Dillon	162.475
Ekalaka	162.475
Forsyth	162.525
Glasgow	162.400
Glendive	162.475
Glentana	162.525
Great Falls	162.550
Hardin	162.450
Havre	162.400
Helena	162.400
Jordan	162.500
Kalispell	162.550
Lewistown	162.500
Livingston	162.525
Malta	162.475
Miles City	162.400
Missoula	162.400
Plentywood	162.475
Poplar	162.425
Ryegate	162.450
Scobey	162.450
Wibaux	162.500
Winnett	162.400

NEBRASKA

Albion	162.500
Bassett	162.475
Beatrice	162.450
Cambridge	162.525
Chadron	162.525
Columbus	162.450
Grand Island	162.400
Holdrege	162.475
Lexington	162.425
Lincoln	162.475
Merna	162.500
Merriman	162.400
Mullen	162.425
Norfolk	162.550
North Platte	162.550
Omaha	162.400

NEVADA

Battle Mtn.	162.425
Bullhead City	162.500
Elko	162.550
Ely	162.400
Eureka	162.550
Fernley	162.450
Hawthorne	162.475
Jackpot	162.500
Las Vegas	162.550
Owyhee	162.450
Pahrump	162.400
Reno	162.550
Tonopah	162.400
Winnemucca	162.400

NEW HAMPSHIRE

Clarksville	162.400
Concord	162.400
Deerfield	162.450
Hanover	162.525
Holderness	162.550
Mt. Washington	162.500
Pack Monadnock	162.525

NEW JERSEY

Atlantic City	162.400
Hardyston	162.500
Southard	162.450

NEW MEXICO

Albuquerque	162.400
Artesia	162.425
Carlsbad	162.475
Des Moines	162.550
Farmington	162.475
Hobbs	162.400
Las Cruces	162.400
Portales	162.475
Roswell	162.450
Ruidoso	162.550
Santa Fe	162.550
Silver City	162.425

NEW YORK

Albany	162.550
Binghamton	162.475
Buffalo	162.550
Call Hill	162.425
Cattaraugus	162.425
Cooperstown	162.450
Elmira	162.400
Frewsburg	162.525
Gore Mtn.	162.450
Highland	162.475
Ithaca	162.500
Lyons	162.475
Middleville	162.425
Mt. Washington	162.450
New York City	162.550
Norwich	162.525
Riverhead	162.475
Rochester	162.400

Spencerport	162.525
Stamford	162.400
Syracuse	162.550
Walton	162.425
Watertown	162.475
White Hill	162.525

NORTH CAROLINA

Asheville	162.400
Buck Mountain	162.500
Cape Hatteras	162.475
Chapel Hill	162.550
Charlotte	162.475
Ellerbe	162.400
Garner	162.450
Henderson	162.500
Linville	162.450
Mamie	162.425
Margarettsville	162.450
Mount Jefferson	162.500
New Bern	162.400
Robbinsville	162.525
Rocky Mount	162.475
Saint Pauls	162.475
Statesville	162.525
Warsaw	162.425
Windsor	162.525
Winnabow	162.550
Winston-Salem	162.400

NORTH DAKOTA

Bismarck	162.475
Cavalier	162.450
Dickinson	162.400
Fargo	162.475
Fort Ransom	162.525
Grand Forks	162.475
Jamestown	162.550
Langdon	162.500
Minot	162.400
New Town	162.525
Petersburg	162.400
Rolla	162.475
Scranton	162.525
Sheyenne	162.525
Steele	162.400
Webster	162.425
Williston	162.550
Willow City	162.450

NORTHERN MARIANA ISLANDS

Saipan	162.550
--------------	---------

OHIO

Akron	162.400
Athens	162.425
Bridgeport	162.525
Carey	162.525
Chillicothe	162.500
Cleveland	162.550
Columbus	162.550
Dayton	162.475
Grafton	162.500
High Hill	162.475
Lima	162.400
Mansfield	162.450
Marietta	162.400
New Philadelphia	162.425
Otway	162.525
Sandusky	162.400
Toledo	162.500
Youngstown	162.500

OKLAHOMA

Altus	162.425
Antlers	162.400
Ardmore	162.525
Atoka	162.500
Bartlesville	162.425
Broken Bow	162.450
Chickasha	162.450
Clinton	162.525
Enid	162.475
Grove	162.525
Guymon	162.500
Lawton	162.550
McAlester	162.475
Oklahoma City	162.400
Oktaha	162.525
Ponca City	162.450
Stillwater	162.500
Tulsa	162.550
Wewoka	162.550
Woodward	162.500

OREGON

Bend/Redmond	162.500
Brookings	162.550
Burns Butte	162.475
Cape Blanco	162.425
Carney Butte	162.475
Coos Bay	162.400
Enterprise	162.425
Eugene	162.400
Florence	162.500
Fossil	162.550
Heppner	162.425
John Day	162.500
Klamath Falls	162.550
Medford	162.400
Mt Hebo	162.525
Mt. Ashland	162.475
Neahkahnie	162.425
Newport	162.550
Portland	162.550
Reedsport	162.525
Roseburg	162.550
Salem	162.475
Spout Springs	162.400
The Dalles	162.400
Tillamook	162.475

PENNSYLVANIA

Allentown	162.400
Altoona	162.425
Clearfield	162.550
Coudersport	162.500
Erie	162.400
Harrisburg	162.550
Hibernia Park	162.425
Honesdale	162.450
Huntingdon	162.525
Johnstown	162.400
Meadville	162.475
Parker	162.425
Philadelphia	162.475
Pittsburgh	162.550
Reynoldsville	162.500
State College	162.475
Towanda	162.525
Warren	162.450
Wellsboro	162.475
Wilkes-Barre	162.550
Williamsport	162.400

PUERTO RICO

Maricao	162.550
---------------	---------

natural disasters and nuclear attack. This concept has been expanded to include warnings for all hazardous conditions that pose a threat to life and safety, both at a local and national level. As a result, NOAA Weather Radio is being better integrated with other National Weather Service systems to provide state and local emergency managers and other warning providers better access to local weather forecast offices, allowing hazard warnings of all types to be broadcast on NOAA Weather Radio within seconds

NOAA Weather Radio currently broadcasts from 1036 stations in fifty states, Puerto Rico, the U.S. Virgin Islands, American Samoa, Guam, and Saipan on seven frequencies in the VHF band, ranging from 162.400 to 162.550 megahertz (MHz). These frequencies are outside the normal AM or FM broadcast bands.

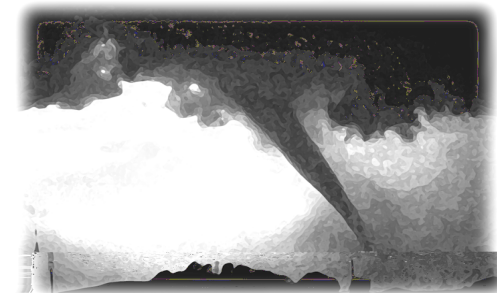
Special radios that receive only NOAA Weather Radio, both with and without special alerting features, are available from numerous manufacturers. In addition, other manufacturers are including NWR capability in a variety of receivers. NOAA Weather Radio capability is currently available on automobile, aircraft, marine, citizens band, and standard AM/FM radios as well as communications receivers, transceivers, scanners, and cable TV.

By nature and design, NOAA Weather Radio coverage is limited to an area within 40 miles of the transmitter. The quality of reception is dictated by transmitter distance, local terrain, and the quality and location of the receiver. In general, those using a high quality receiver on flat terrain or at sea can expect reliable reception beyond 40 miles. Those with standard receivers, surrounded by large buildings in cities and those in mountain valleys may experience little or no reception at considerably less than 40 miles. If possible, a receiver should be tested in the location where it will be used prior to purchase.

NOAA Weather Radio is directly available to a large portion of the U.S. and covers greater than 95 percent of the population.

If you have a question regarding the technical aspects of NOAA Weather Radio such as transmitter location, reception, and characteristics or if you are interested in becoming a partner with the National Weather Service to identify or provide local funding and/or facilities for the installation of a NOAA Weather Radio transmitter, please contact your local National Weather Service Office or send a letter to:

National Weather Service
Attn: Dissemination Systems Branch, W/DSB
1325 East-West Highway
Silver Spring, MD 20910



The following is a listing of operational stations by state. For specific coverage information for your local area please visit our website at:
<http://www.weather.gov/nwr/>

ALABAMA

Anniston	162.475
Arab	162.525
Auburn	162.525
Birmingham	162.550
Brewton	162.475
Columbus	162.400
Cullman	162.450
Demopolis	162.475
Dozier	162.550
Florence	162.475
Greenville	162.425
Henagar	162.500
Huntsville	162.400
Jackson	162.500
Louisville	162.475
Mobile	162.550
Montgomery	162.400
Oneonta	162.425
Selma	162.450
Tuscaloosa	162.400
Winfield	162.525

ALASKA

Althorp Peak	162.425
Anchorage	162.550
Bede Mountain	162.450
Bethel	162.550
Cape Fanshaw	162.425
Cape Gull	162.500
Cape Hinchinbrook	162.525
Cold Bay	162.425
Cordova	162.400
Craig	162.475
Dillingham	162.500
Duffield Peninsula	162.525
Duke Island	162.450
East Point	162.500
Fairbanks	162.550
Glennallen	162.550
Gravina Island	162.525
Haines	162.400
Homer	162.400
Juneau	162.550
Ketchikan	162.550
Kodiak	162.550
Kotzebue	162.550
Manleyville	162.500
Marmot Island	162.500
Middle Cape	162.525
Mt. McArthur	162.525
Mt. Robert Barron	162.450
Nenana	162.400
Ninilchik	162.550
Nome	162.550
Pillar Mtn.	162.525
Point Pigot	162.450
Potato Point	162.425
Raspberry Island	162.425
Rugged Island	162.425
Saint Paul Island	162.525
Sand Point	162.550
Seward	162.550
Sitka	162.550
Sitkinak Dome	162.450
Soldotna	162.475

AMERICAN SAMOA

Mt. Oloatele	162.550
Pago Pago	162.400

ARIZONA

Flagstaff	162.400
Globe	162.500
Grand Canyon	162.475
Greer	162.525
Kingman	162.425
Lake Havasu	162.400
Nogales	162.500
Payson Gila County N.	162.425
Phoenix	162.550
Prescott	162.525
Safford	162.550
Tucson	162.550
Window Rock	162.550

ARKANSAS

Cherokee Village	162.475
El Dorado	162.525
Fayetteville	162.475
Fort Smith	162.550
Fountain Hill	162.475
Gurdon	162.475
Harrison	162.525
High Peak	162.425
Jonesboro	162.550
Little Rock	162.550
Marvell	162.525
Mena	162.400
Morrilton	162.475
Mountain View	162.450
Russell	162.400
Russellville	162.525
Springdale	162.400
Star City	162.400
Yellville	162.500

CALIFORNIA

Avalon	162.525
Bakersfield	162.550
Big Rock Ridge	162.500
Bishop	162.425
Coachella	162.400
Coachella / Spanish	162.525
Contra Costa County	162.425
Conway Summit	162.525
El Paso Mtns.	162.425
Eureka	162.400
Fresno	162.400
Grass Valley	162.400
Los Angeles	162.550
Malibu Marine	162.425
Monterey	162.550
Monterey Marine	162.450
Point Arena	162.550
Redding	162.550
Sacramento	162.550
San Diego	162.400
San Diego Marine	162.425

COLORADO

Alamosa	162.475
Anton	162.425
Bethune	162.525
Boyer	162.450
Canon City	162.500
Colorado Springs	162.475
Deer Trail	162.500
Denver	162.550
Dillon	162.400
Durango	162.425
Eagle	162.450
Fort Collins/Ault	162.450
Fort Morgan	162.525
Fowler	162.425
Franktown	162.450
Glenwood Springs	162.500
Grand Junction	162.550
Greeley	162.400
La Junta	162.500
Lamar	162.525
Mead/Longmont	162.475
Montrose	162.450
North Cottonwood	162.500
Pueblo	162.400
Springfield	162.400
Steamboat Springs	162.525
Sterling	162.400
Walsenburg	162.450
Wray	162.475

CONNECTICUT

Cornwall	162.500
Hartford	162.475
Meriden	162.400
New London	162.550

DELAWARE

Lewes	162.550
Salisbury	162.475

DISTRICT OF COLUMBIA

Washington DC	162.450
---------------	---------

FLORIDA

Belle Glade	162.400
Daytona Beach	162.400
East Point	162.500
Fort Myers	162.475
Fort Pierce	162.425
Gainesville	162.475
Hialeah Spanish	162.500
Inverness	162.400
Jacksonville	162.550
Key West	162.400
Lake City	162.400
Largo	162.450
Melbourne	162.550

Miami	162.550
Morrison	162.550
Naples	162.525
Sandberg	162.525
Santa Ana	162.450
Santa Barbara	162.400
Santa Barbara Marine	162.475
Sonoma County	162.475
Susanville	162.500
Ukiah	162.525
Victorville	162.500
Willow Creek	162.450
Yosemite	162.450
Yuma	162.550

GEORGIA

Americus	162.425
Ashburn	162.450
Athens	162.400
Atlanta	162.550
Augusta	162.550
Baxley	162.525
Blakely	162.525
Blue Ridge	162.475
Brasstown Bald	162.500
Brunswick	162.425
Buchanan	162.425
Chatsworth	162.400
Clayton	162.450
Cleveland	162.525
Eastman	162.400
Eatonton	162.525
Jesup	162.450
La Grange	162.450
Macon	162.475
Metter	162.425
Pelham	162.550
Sandersville	162.450
Summerville	162.450
Thomaston	162.500
Toccoa	162.425
Valdosta	162.500
Washington	162.500
Waycross	162.475

GUAM

Guam	162.400
------	---------

HAWAII

Hawaii Kai	162.450
Kauai	162.400
Kulani Cone	162.550
Lihue	162.450
Maui	162.400
North Kohala	162.500
Oahu	162.550
South Point	162.550

IDAHO

Boise	162.550
Bonnars Ferry	162.500
Burley	162.475
Driggs	162.450
Grangeville	162.450
Lewiston	162.550
McCall	162.475
Orofino	162.500
Payette	162.400

ILLINOIS

Bloomington	162.525
Champaign	162.550
Chester	162.450
Chicago	162.550
Crescent City	162.500
Crystal Lake	162.500
DeKalb	162.550
Dixon	162.525
Freeport	162.450
Galesburg	162.400
Hillsboro	162.425
Jacksonville	162.525
Jerseyville	162.450
Kankakee	162.525
Lockport	162.425
Macomb	162.500
Marion	162.425
McLeansboro	162.400
Newton	162.450
Odell	162.450
Paris	162.525
Peoria	162.475
Plano	162.400
Princeton	162.425
Quad Cities	162.550
Buchanan	162.550
Rockford	162.475
Salem	162.475
Shelbyville	162.500
Springfield	162.400

INDIANA

Angola	162.425
Bloomington	162.450
Edwardsville	162.425
Evansville	162.550
Fort Wayne	162.550
Georgia	162.500
Hebron	162.450
Indianapolis	162.550
Marion	162.450
Michigan City	162.500
Monticello/Lafayette	162.475
Muncie	162.425
New Albany	162.475
Newport	162.425
North Webster	162.500
Putnamville	162.400
Richmond	162.500
Seymour	162.525
South Bend	162.400

IOWA

Burlington	162.525
Carroll	162.425
Cedar Rapids	162.475
Decorah	162.525
Delaware	162.450
Denison	162.550
Des Moines	162.550
Essex	162.550
Fairfield	162.400
Forest City	162.500
Fort Dodge	162.400
Hancock/Pottawattam	162.525
Iowa Falls	162.525
Lake Rathbun	162.425
Lenox	162.450

Maquoketa	162.425
Marshalltown	162.500
Milford	162.550
Montezuma	162.450
Ottumwa	162.500
Ringsted	162.475
Sanborn	162.525
Sioux City	162.475
St. Ansgar	162.450
Storm Lake	162.450
Van Wert	162.475
Waterloo	162.550

KANSAS

Abilene	162.525
Beaumont	162.500
Belvidere	162.525
Blue Rapids	162.425
Chanute	162.400
Concordia	162.550
Dighton	162.525
Dodge City	162.475
Ellsworth	162.400
Gem	162.400
Great Bend	162.500
Halls Summit	162.425
Hays	162.450
Kirwin	162.500
Lenora	162.425
Meade	162.425
Parker	162.525
Saint Joseph	162.400
Sharon	162.400
Topeka	162.475
Tribune	162.550
Ulysses	162.450
Wichita	162.550

KENTUCKY

Ashland	162.550
Beattyville	162.500
Bowling Green	162.400
Burkesville	162.475
Campbellsville	162.525
Covington	162.550
East Madison County	162.525
Edmonton	162.450
Ekron	162.450
Elizabethtown	162.550
Frankfort	162.500
Frenchburg	162.475
Harlan	162.450
Hazard	162.475
Hopkinsville	162.450
Horse Cave	162.500
Irvine	162.475
Jackson	162.425
Lexington	162.400
London	162.475
Madison County	162.525
Madisonville	162.525
Manchester	162.400
Mayfield	162.475
Maysville	162.425
McKee	162.450
Moberly	162.525
Monticello	162.425
Morehead	162.400
Mount Vernon	162.425
Owenton	162.450
Paintsville	162.525
Phelps	162.500
Pikeville	162.400
Pineville	162.525

LOUISIANA

Alexandria	162.475
Baton Rouge	162.400
Bogalusa	162.525
Buras	162.475
Lafayette	162.550
Lake Charles	162.400
Monroe	162.550
Morgan City	162.475
Natchitoches	162.500
New Orleans	162.550
Shreveport	162.400

MAINE

Caribou	162.525
Dresden	162.475
Ellsworth	162.400
Falmouth	162.550
Frenchville	162.475
Greenville	162.425
Jonesboro Marine	162.450
Meddybemps	162.425
Milo	162.550
Springfield	162.500
Sugarloaf Mtn	162.450

MARYLAND

Baltimore	162.400
Frostburg	162.425
Hagerstown	162.475
Sudlersville	162.500

MASSACHUSETTS

Boston	162.475
Bourne/Hyannis	162.550
Egremont	162.450
Gloucester Marine	162.425
Leyden	162.425
Mt. Greylock	162.525
Worcester	162.550

MICHIGAN

Adrian / Petersburg	162.450
Alpena	162.550
Bad Axe	162.525
Cannonsburg	162.550
Copper Harbor	162.500
Crystal Falls	162.475
Detroit	162.550
Escanaba	162.500
Flint	162.475
Gaylord	162.500
Grand Marais	162.425
Hesperia	162.475
Houghton	162.400
Mayfield	162.400
Manistique	162.525
Marenisco	162.550
Moberly	162.550
Mount Pleasant	162.525
Munising	162.475
Newberry	162.450
Onondaga	162.4