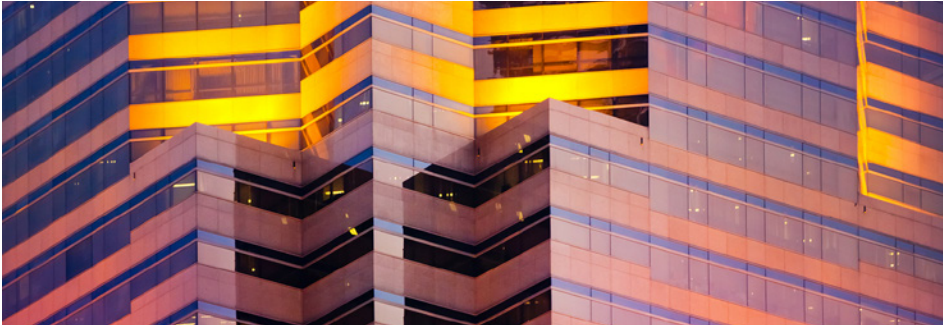


Xerox® FreeFlow® Print Server for the Xerox® iGen® 5 Press

XEROX® FREEFLOW®
PRINT SERVER

Powered by Windows®



The image quality, performance and productivity that is the hallmark of the Xerox® FreeFlow Print Server is available on a Microsoft® Windows platform. You can always count on production-class robustness, reliability, ease of use and supportability. And the Adobe® PDF Print Engine® delivers optimal image rendering for all your application needs.

TAKE IMAGE QUALITY TO THE NEXT LEVEL.

Take full advantage of the vibrant iGen 5 fifth color with optimized extended color controls, including the expanded FreeFlow Print Server spot color manager. Keep your color consistent with fast calibration and advanced profiling. And with one-button ease, you can color match CMYK and RGB. Advanced patented image quality capabilities optimize your output.

BE CONFIDENT YOUR PDF FILES PRINT ACCURATELY.

The Xerox® FreeFlow Print Server with the latest Adobe PDF Print Engine delivers a powerful, predictable and consistent workflow from creative through prepress and production. By processing PDF files natively, you eliminate problems associated with conversion. Special graphic effects all print as expected.

PRODUCTIVITY MEETS EASE OF USE.

The FreeFlow Print Server's enhanced parallel RIP technology delivers optimal performance for your most demanding print applications, while the new Web UI allows management of your production environment from anywhere, on any device, using standard browsers. This is the perfect blend of power and simplicity.



Xerox® FreeFlow® Print Server for the Xerox® iGen® 5 Press, Powered by Windows®

XEROX® FREEFLOW®
PRINT SERVER

HARDWARE/PLATFORM

- DELL™ PowerEdge™ T630 Tower Chassis
- Processor Type: 2x Intel® Xeon® E5-2687W V3, 3.1 GHz, 25M Cache
- Hard Drive: 4 x 1.2TB 10K RPM
- Memory: 64GB
- Operating System: S
- Windows 7 Embedded
- Ports: 3 x USB 3.0, 5 x USB 2.0, 1 serial
- 10/100/1000 BaseT Ethernet Ports
- Display: 22" Wide Screen
- Dual Layer DVD +/- RW/CD RW

XEROX® CONFIDENTCOLOR TECHNOLOGY

- Extended Gamut modes, including support for fifth color (orange, green or blue)
- Spot colorant modes including support for White and Clear Dry Ink
- 100% CMYK High Resolution Enhancement
- ICC and DeviceLink workflow support
- Advanced Profiling—optimized profiling target (patent pending) provides High Accuracy Printer Model
- Rendering Intent Programming by color space and object type
- Optimized RGB and Spot Color Emulation
- PANTONE PLUS licensed and spot color matching
- PANTONE Goe™ support
- New RGB rendering for digital photo printing
- Key color emulations such as GRACoL®, SWOP®, Euroscale, Fogra, Japan Color and ECI
- Tone Reproduction Curve (TRC) Editor
- In-RIP trapping, anti-aliasing, overprinting and selectable halftones
- Intuitive spot color editor for spot color matching
- Absolute rendering produces more accurate CGATS E results

CLIENT AND REMOTE SUPPORT

- Choice of print drivers
 - Support for Xerox® Global Print Driver®
 - Xerox® fully featured print drivers
 - Microsoft® Windows Client OS: Vista, 7, 8, 8.1 Update 1, 10.0 and 10 S
 - Windows Server® OS: 2008, 2008 R2, 2012, 2012 R2 and 2016
 - Apple® macOS®: 10.11, 10.12 and 10.13
 - Citrix®: XenApp® 7.6 (CU4), XenDesktop® 7.6 (CU4), 7.13 and 7.14
 - Novell®: NetWare® 6.x, NDPS®, NDS®, iPrint and Open Enterprise Server 2015

CLIENT AND REMOTE SUPPORT, CONTINUED

- Adobe® PostScript® Printer Descriptions (PPD)
- HTTP and HTTPS browser submission support
- IPP for job submission and system status
- Support of IPv4 and IPv6 (dual mode supported)
- Native JDF/JMF support

PRODUCTIVITY AND WORKFLOW

- Web UI allows management of multiple print engines from anywhere, on any device
- Adobe PDF Print Engine® version 4.4
- Xerox® Print Drivers
- Extensive job management capabilities at page, job and queue levels
- Thumbnail Preview
- Layout/Imposition Standard
- File Submissions
 - Hot Folder
 - Hot Drop to Web UI
 - Upload from Web UI
 - USB walkup
- Page Exception Programming
- Preflight, preview and soft proof for job accuracy
- JDF job ticket support
- FreeFlow Discovery feature allows administrators to find and manage remote printers

VARIABLE DATA PRINTING

- Xerox® FreeFlow VI Suite option
- Native PPML
- PDF/VT-1 specification version 1.1, PDF/X-1a, PDF/X-3 and PDF/X-4

FILE FORMAT SUPPORT

- Adobe PostScript Level 1, 2, 3
- Adobe Acrobat® 9.0, PDF 1.8, PDF/X, XPS
- TIFF, EPS, JPEG, PPML
- Native JDF/JMF Gateway
- Adobe PDF Print Engine 4.4
- Microsoft Word and PowerPoint® document conversion

Includes Adobe PDF Converter SDK
Includes Adobe PDF Print Engine
Includes Adobe PostScript Fonts
Includes Adobe PDF Library
Includes Adobe Japanese Fonts

NETWORK ENVIRONMENT/PROTOCOLS

- TCP/IP, IPP
- DHCP Single IP
- SNMP MIB II support for third-party administration tools

SECURITY FEATURES

- Microsoft Security Guidelines
- Two security profile modes and levels
- Encrypted job submission modes
- Secure Print Mode (restricts page reprints)
- Address Access Filtering
- Strong password support
- Data Overwrite (on demand)
 - STIG compliance
 - FIPS 140-2
 - 802.1x
 - SNMP v3
 - SSL V1, SSL V3
 - IPSec support
 - IPv6 compliance
 - SSL signed certificate

DIMENSIONS/WEIGHT

- Print Server
 - Height: 17.5 in. (44 cm)
 - Width: 12.0 in. (30 cm)
 - Depth: 27.9 in. (71 cm)
 - Weight with Optional Stand: 114.3 lb (51.9 kg)

OPTIONAL STAND

- Height: 12.1 in. (31 cm)
- Width: 18.6 in. (47 cm)
- Depth: 27.9 in. (71 cm)

POWER

- Voltage: 12 A at 110 VAC and 6 A at 220 VAC
- Power: 1100 W

REGULATORY AGENCY APPROVAL

Meets or exceeds the following requirements:

- Safety—UL 1950, CSA C22.2 No. 950, TUV EN 60950
- RFI/EMI—FCC Class A, DOC Class A, EN55022 Class A, EN 61000-3-2
- Immunity—EN50082-1
- CE Mark

For more information on the Xerox® FreeFlow® Print Server Version 23.0 for the Xerox® iGen® 5, please contact your Xerox representative, call 1-800-ASK-XEROX or visit us online at www.xerox.com.

