

LOC FFCM 109.7	APP CRS 098°	Rwy Idg TDZE Apt Elev	5001 906 906
--------------------------	------------------------	-----------------------------	---

COPTER ILS or LOC RWY 10R

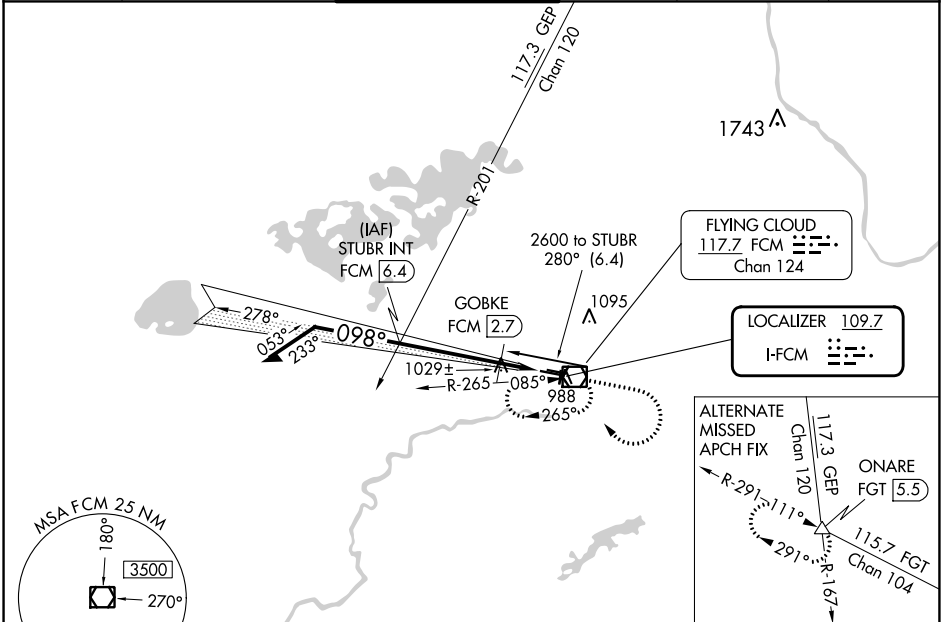
FLYING CLOUD (FCM)

⚠ For inoperative MALSR, increase visibility to 1/2 mile. When local altimeter setting not received, use Minneapolis-St Paul Intl-Wold Chamberlain altimeter setting and increase DA 34 feet and all MDA 40 feet.

MALSR

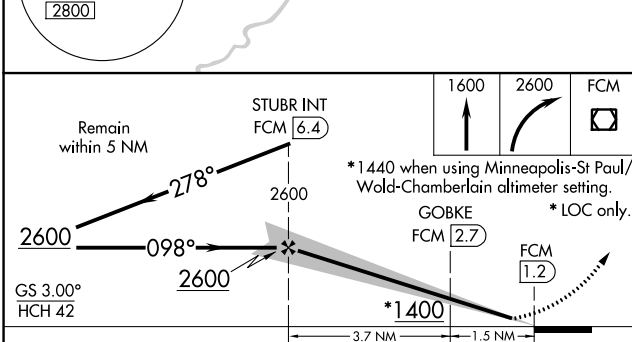
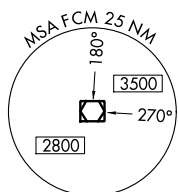
MISSED APPROACH: Climb to 1600 then climbing right turn to 2600 direct FCM VOR/DME and hold, continue climb-in-hold to 2600.

ATIS 124.9	MINNEAPOLIS APP CON 134.7 284.7	FLYING CLOUD TOWER * 119.15 (CTAF)	GND CON 121.7	CLNC DEL 121.7 (When twr closed)	UNICOM 122.95
----------------------	---	--	-------------------------	---	-------------------------

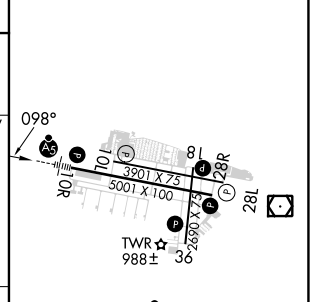


NC-1, 03 OCT 2024 to 31 OCT 2024

NC-1, 03 OCT 2024 to 31 OCT 2024



ELEV 906	TDZE 906
----------	----------



CATEGORY	COPTER	
H-ILS 10R	1106-1/4	200 (200-1/4)
H-LOC 10R	1400-1/4	494 (500-1/4)
GOBKE FIX MINIMUMS (DME REQUIRED)		
H-LOC 10R	1280-1/4	374 (400-1/4)

HIRL Rwy 10R-28L					
REIL Rwy 10L and 28R					
REIL Rwy 18, 28L, and 36					
MIRL Rwy 10L-28R					
MIRL Rwy 18-36					
FAF to MAP 5.2 NM					
Knots	45	60	75	90	105
Min:Sec	6:56	5:12	4:10	3:28	2:58