



**NATIONAL
WEATHER
SERVICE**

NWS Partners Webinar

NCEP Web Services

December 8, 2020



Today's Webinar Agenda

- Welcome and logistics
- Overview of NCEP web services and issues and mitigation options
- Open discussion
- Wrap-up



Peyton Robertson
Director
Office of Organizational
Excellence
National Weather Service



Andrea Bleistein
Partner Engagement Lead
Office of Organizational
Excellence
National Weather Service



Webinar Logistics: How to join the discussion!



- If using the phone for audio, please be sure to enter your audio pin. If you did not do it when you called in, type #PIN# into your phone now.



- All lines will remain muted until the open discussion.



- We are recording the webinar for posting later.



Welcome to our Presenters



Brian Gross
Director (acting)
National Centers for Environmental Prediction
National Weather Service



Ben Kyger
Director
NCEP Central Operations
National Weather Service

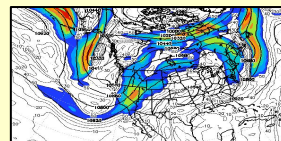
NWS National Centers for Environmental Prediction Specialized Services – Common Mission



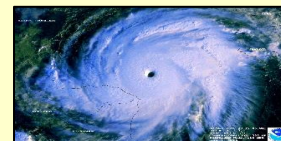
**Aviation Weather
Center Kansas City, MO**



**Climate Prediction Center
College Park, MD**



**Environmental
Modeling Center
College Park, MD**



**National Hurricane Center
Miami, FL**



**NCEP Central Operations
College Park, MD
(Supercomputers in
Reston & Orlando)**



**Ocean Prediction Center
College Park, MD**



**Space Weather
Prediction Center
Boulder, CO**



**Storm Prediction Center
Norman, OK**



**Weather Prediction Center
College Park, MD**

Mission

NCEP delivers national and global operational weather, water and climate products and services essential to protecting life, property and economic well-being.

Vision

The trusted source for environmental predictions from the sun to the sea, when it matters most.

NCEP Web Services and Issues



- Network bandwidth is insufficient to meet public Web dissemination demands within 1 data center
- NWS websites* must be deployed across both the primary and backup sites simultaneously in order to meet customer demand
 - Consequently, there is no full backup capability for these services
- The impact of this situation today is that NOMADS, a heavy user of network bandwidth, is taken down in order to perform maintenance or during operation issues. **Availability will decrease as demand for NOMADS data increases.**
- We are here to discuss mitigating this issue with you.

*https://www.weather.gov/media/notification/pdf2/pns20-85ncep_web_access.pdf



Mitigation Options

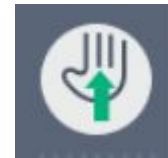
NCEP is recommending that we limit the rate of user access requests to prevent the situation from getting worse

- 
- 
- Analysis was done of the average usage pattern across several websites
 - Based on the data, our suggestion would be to lower the threshold for all websites to 60 hits/minute
 - The data indicates the new limit would impact heavy usage, but wouldn't have any effect on 75% of our users
-

- 
- 
- 
- Other options considered

Open Discussion

Please use the **question box** or **hand-raise option**.





If we don't get to you, enter your comment in the "Questions" box or email NCO Implementation and Data Services Branch Chief Carissa Klemmer at idp.feedback@noaa.gov

- Comments being accepted through December 18, 2020



Wrap Up - What's coming

- Academia Roundtable Discussion: Weather-Ready Nation [Winter 2021]
 - Partner calls with NWS Deputy Director [Ongoing]
- 
- 
- 

THANK YOU!!

weather.gov/wrn/calendar

