

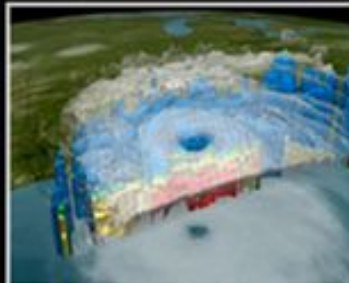
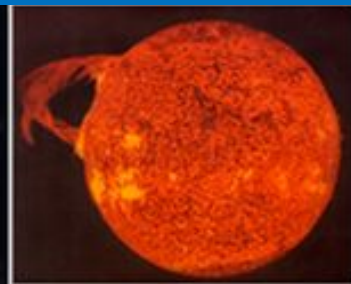
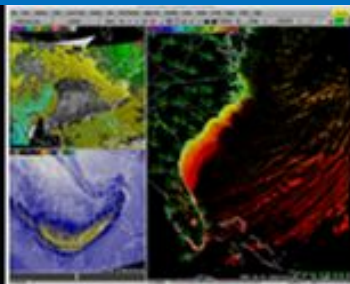


NOAA

National
Weather
Service

WELCOME! NWS Partners Meeting Albany, NY

Mary Erickson
Deputy Director
August 15, 2019



Spring Partner's Meeting

Building a Weather-Ready Nation



Partner Engagement

2019-2022

STRATEGIC PLAN



Key Advances

Water Model v2.0 6/19/19
Hawaii, hourly, ensemble
Flood Inundation Map Demo
Day 3 excessive rainfall



Spring Outlook: Historic, widespread flooding to continue

NE Kansas Tornado

EF-4 on ground for 30+ miles. NO FATALITIES.

6 DAYS BEFORE	NWS Storm Prediction Center outlines Kansas City as having a risk of severe weather on 5/28	4 HOURS BEFORE	SPC issues a Tornado Watch for Kansas City, predicting "a couple intense tornadoes possible"
4 DAYS	NWS Storm Prediction Center upgrades Kansas City's risk to "enhanced"	1.5 HOURS BEFORE	NWS Topeka issues first Tornado Warning for Osage County as cell begins to intensify
	SPC places Kansas City under a "hatched" area for "significant severe weather" potential	27 MINUTES BEFORE	NWS Kansas City issues a Tornado Warning for Linwood, calling it a "Particularly Dangerous Situation"
	SPC update features a "moderate risk" near Kansas City, emphasizing tornado potential	10 MINUTES BEFORE	NWS Kansas City issues a Tornado Emergency for Linwood and areas downwind



HAZARD SIMPLIFICATION: PRODUCT CONSOLIDATION



Nothing incredible happened last week: Forecasters predicted with saving lives in outbreak with 434 tornadoes

The Washington Post

WeatherNation
 BREAKING: Yesterday's tornado near Linwood, Kansas has been rated an EF-4 with 170mph peak winds.
 This marks the 2nd violent tornado of 2019. bit.ly/2W1mm5k

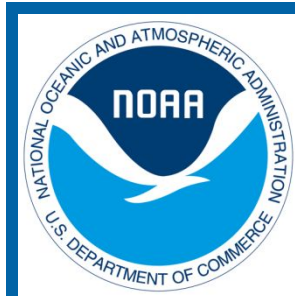
Communication Challenges: Message delivered = message received. Are effective actions known? understood? followed?

Providing aspirational leadership in science-based approach to **next generation of Wx, Water & Climate leaders**

Innovations in observing: Mesonet - driving improved analyses and decision making, Satellite Architecture - nimble & diverse

Understanding decision making - both through Engaging with users from outside the enterprise; Understanding our partners within




R2O2R - its about people, building culture of collaboration, clarity of needs expedites progress, active participation by R & O throughout TRL's, clear governance



2019 AMS Community Meeting



Engage! Two Opportunities

- 
- Special Guests from the academic community
 - Employment opportunities across the Wx enterprise; tell stories
 - Future of observing, forecasting, modeling, research, technology
 - Drive the Agenda; Vote with your feet
 - Pull from last Partner's meeting, AMS Community meeting, core Wx Enterprise issues
 - Request: Open, Curious, Bold, Responsible



Have Fun!





Let's GO!

