



**NATIONAL  
WEATHER  
SERVICE**

# NWS Partners Summer Webinar Series

A Change in the Weather: NWS Updates and the 2020 Atlantic Hurricane Season

August 4, 2020



# Today's Webinar Agenda

- Welcome and logistics
- Panel Introductions and Remarks
- Open discussion
- Wrap-up



**Peyton Robertson**  
Director  
Office of Organizational  
Excellence  
National Weather Service



**Andrea Bleistein**  
Partner Engagement Lead  
Office of Organizational  
Excellence  
National Weather Service



# Webinar Logistics: How to join the discussion!



- If using the phone for audio, please be sure to enter your audio pin. If you did not do it when you called in, type #PIN# into your phone now.



- All lines will remain muted until the open discussion.



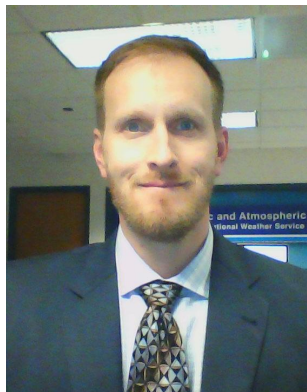
- We are recording the webinar for posting later.



# Welcome to our Panelists



**Mary Erickson**  
Deputy Director  
National Weather Service



**Shawn Smith**  
Meteorologist / Emergency  
Response Specialist  
National Weather Service  
Operations Center



**Michael Manning**  
President and CEO  
Greater Baton Rouge  
Food Bank



# NWS Updates



**Updates**

**Dissemination  
Infrastructure**



**Safety**

**Reliable Service Continues  
Cautious Phasing of Employees**



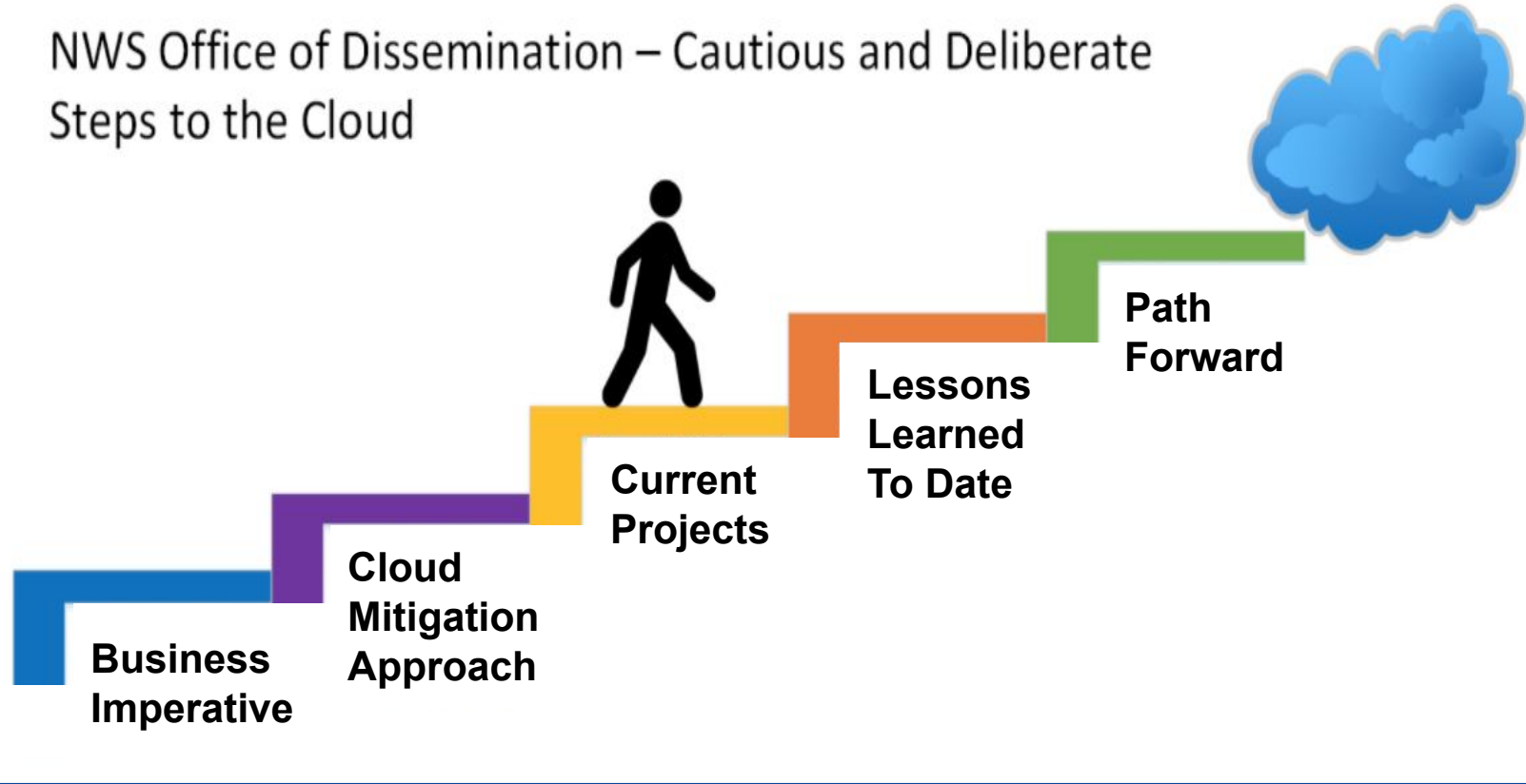
**Resilience**

**Multi-hazard Events  
Thought Process**



# NWS Updates: Dissemination

NWS Office of Dissemination – Cautious and Deliberate Steps to the Cloud



# Planned NWSChat Improvements

Use approved Congressional reprogrammed funds to:

- Improve the stability and reliability of NWSChat (FY20), and
- Transition it to the NWS private-cloud infrastructure (IDP) in College Park, MD and Boulder, CO (FY21)

## Short-Term Goals (FY20)

**Stabilize on legacy infrastructure**

**Enhance Performance**

**Upgrade System Components**

**Update “Rules of Behavior”**

## Medium-Term Goals (FY21)

**Execute Software Development Lifecycle**

**Transition to on-premise private cloud infrastructure**

**Reduce failover time from 2 hours to 10 minutes**

# NWS Updates: Infrastructure West Geostationary Satellite



## GOES-17 ABI Loop Heat Pipe (LHP) issue:

- GOES-15 imagery will be available from Aug 9 - Sep 3 to mitigate LHP
- Worst GOES-17 imagery will be overnight around Aug 29



GOES West:  
Summer Solstice



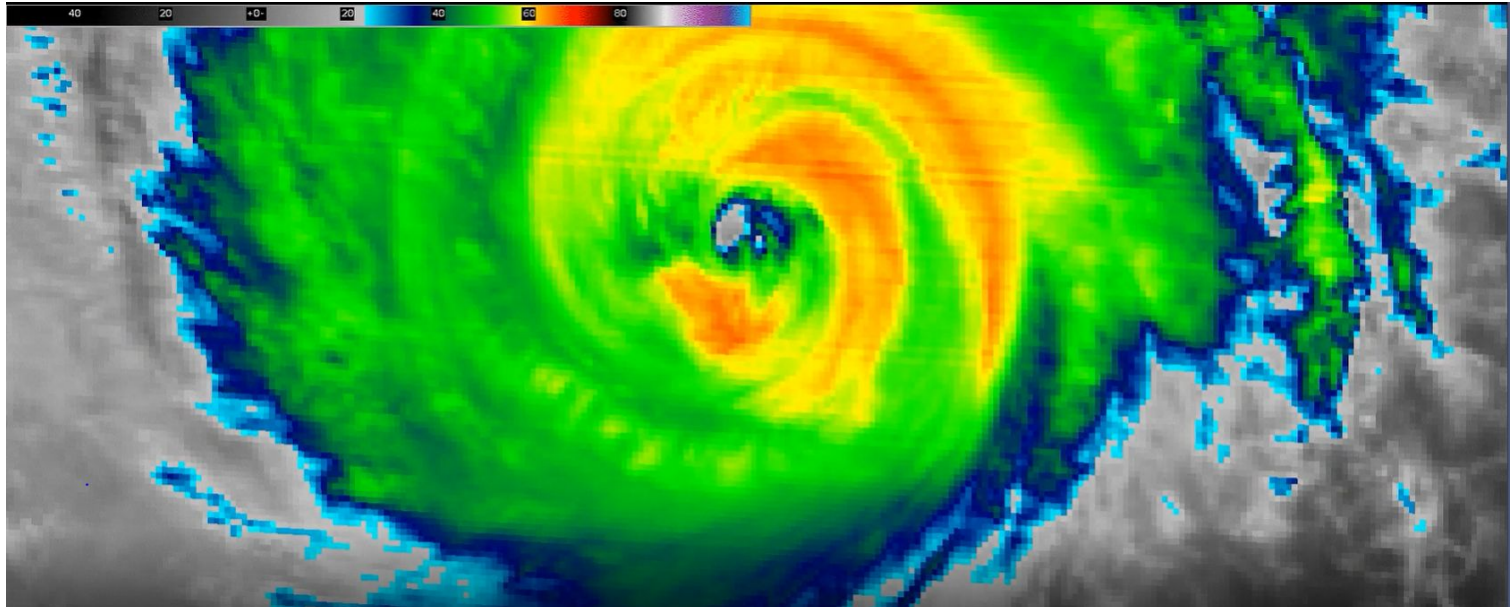


# NWS Updates: Infrastructure

## West Geostationary Satellite

### Evidence of LHP issue during Hurricane Douglas:

- Horizontal banding in imagery



# NWS Updates: Reintegration

- **Smart** - driven by science, data, local input
- **Steady** - slow process to ensure stability
- **Flexible** - will adapt to prioritize safety



**NWS Corpus Christi prepares for Hanna**



**Minimum 14 Day Phase Progression**  
 Details on criteria for and execution of future phases may be updated as new information becomes available.

**CRITERIA**

Downward trajectory of COVID symptoms & positive tests. • Adequate PPE to execute NOAA missions safely. Local hospitals have capacity to treat all patients without crisis care. • No evidence of a rebound in cases.

# NOAA

## Phased Response

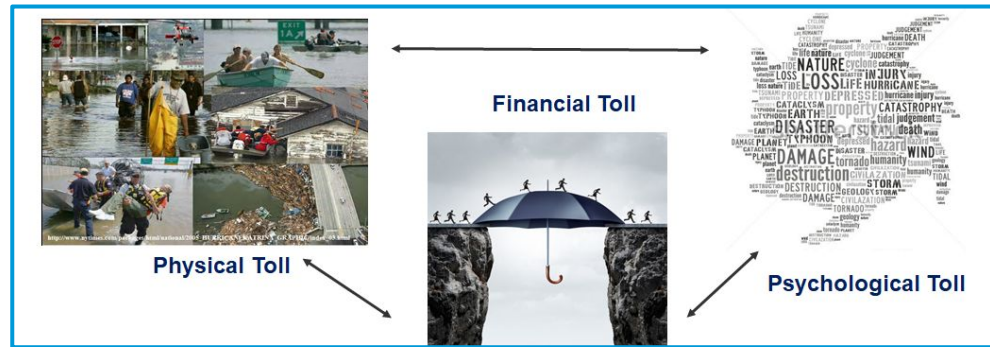
MISSION  
HEALTH  
FACILITIES  
TELEWORK  
EVENTS

	PHASE 0	PHASE 1	PHASE 2	PHASE 3
<b>MISSION</b>	MISSION ESSENTIAL ACTIVITIES	MISSION CRITICAL ACTIVITIES	SUPPORT ACTIVITIES	ALL ACTIVITIES
<b>HEALTH</b>	FACE COVERING REQUIRED			REEVALUATE NEED
	PHYSICAL DISTANCING			
	FREQUENT HANDWASHING			
	POSITIVE CASE FOLLOW-UP			REEVALUATE NEED
<b>FACILITIES</b>	RESTRICTED STAFF ACCESS	UP TO 25% OCCUPANCY	UP TO 50% OCCUPANCY	NORMAL OCCUPANCY
	NO PUBLIC ACCESS		LIMITED PUBLIC ACCESS	NORMAL PUBLIC ACCESS
	COMMON AREAS CLOSED		LIMITED COMMON AREA ACCESS	COMMON AREAS OPEN
<b>TELEWORK</b>	MANDATORY	MAXIMUM	ENCOURAGED <i>MAXIMUM EXTENT POSSIBLE</i>	ENCOURAGED
<b>TRAVEL</b>	SUSPENDED <i>EMERGENCIES REQUIRE DUS and UNSEC APPROVAL</i>	MISSION ESSENTIAL MISSION CRITICAL <i>LO/SO APPROVAL REQUIRED</i>	MISSION ESSENTIAL MISSION CRITICAL	REDUCED TRAVEL
<b>EVENTS</b>	VIRTUAL & REMOTE ONLY	VIRTUAL & REMOTE ONLY	VIRTUAL & REMOTE ONLY	VIRTUAL & REMOTE WHEN POSSIBLE <i>REDUCE LARGE GATHERINGS</i>

RETURN TO NORMAL OPERATIONS

This overall guidance for a phased return to onsite work can vary by location and may evolve based on data from local/state governments and public health officials.

# Multi-Hazard Resiliency



## Pandemic & Weather:

- What questions do we ask ourselves?
- Critical role of our partners

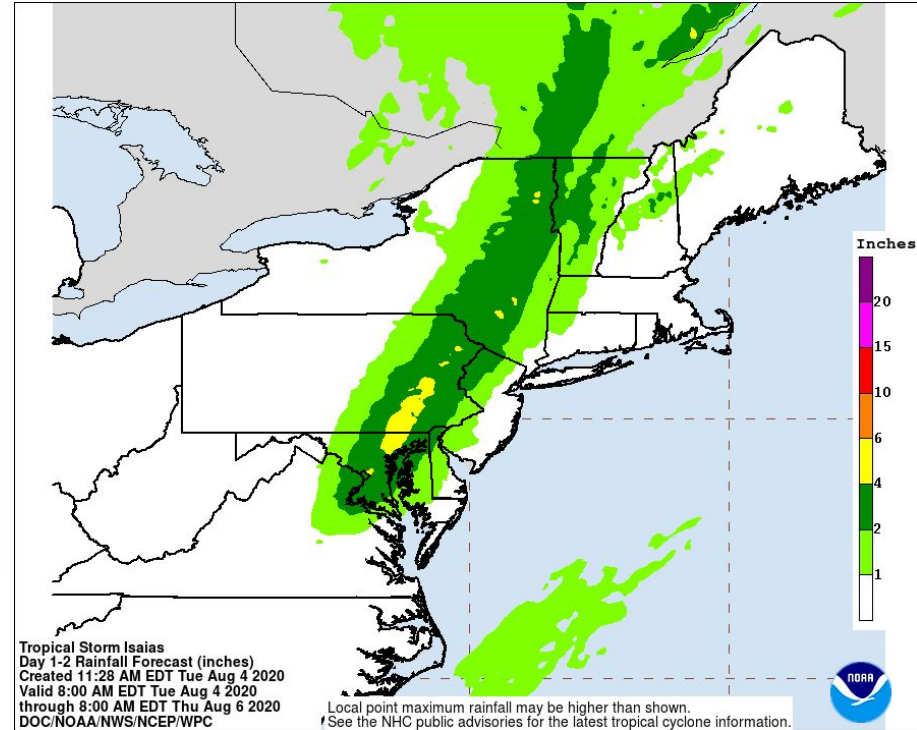
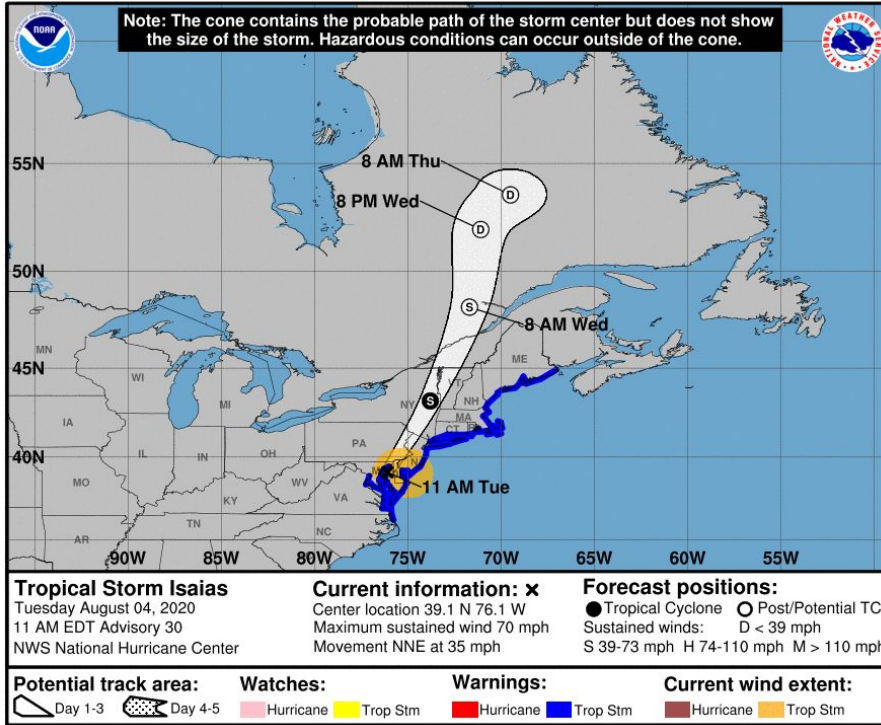
# 2020 Atlantic Hurricane Season



Centers for Disease Control and Prevention  
CDC 24/7: Saving Lives, Protecting People™



# Tropical Storm Isaias



# Michael Manning



GREATER BATON ROUGE

FOOD BANK

MEMBER OF  
**FEEDING<sup>®</sup>**  
**AMERICA**



**National**  
Voluntary Organizations  
Active in Disaster



# Open Discussion

Please speak up to ask a question. You'll have to unmute yourself. Or use the **question box** or **hand-raise option**. Only 25 lines can be unmuted so if you are not speaking - please keep yourself muted.

If we don't get to you, enter your comment in the "Questions" box or email [andrea.bleistein@noaa.gov](mailto:andrea.bleistein@noaa.gov) after the webinar





# Wrap Up - What's coming



## NWS Summer Webinar Series Dates:

- 
- August 11, 2020: Managing Operational Risk and the Supply Chain
  - August 18, 2020: Research and Undergraduate Learning
  - August 25, 2020: Trends and Themes for the Workforce
- 
- 

**THANK YOU!!**