

Continuation of Service Learning with NASA's GLOBE Observer on Dust Monitoring of the Chihuahuan desert

In collaboration with



GLOBE at EPCC

Global Learning & Observations to Benefit the Environment (GLOBE) Program

El Paso Community College (EPCC) – Official GLOBE Partner since April 2019

Incorporation of GLOBE Observer in the remote/virtual curriculum (Physical Science/Astronomy) and service learning activities



Cloud observations
November 2019

Sponsored
by



Supported
by:



Implemented
by



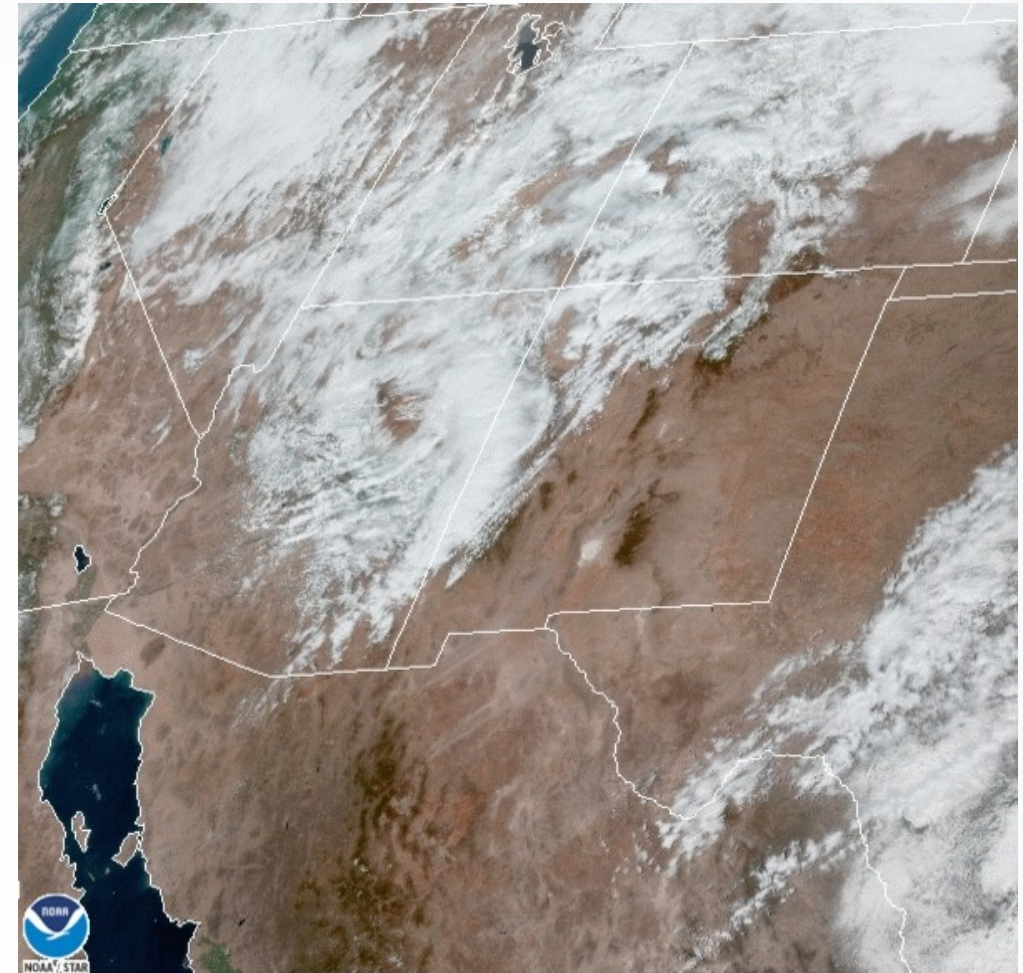
Analysis of Dust Storms – Introduction into curriculum

March 16, 2021 Dust Storm Survey

Used the online New Mexico Department of Transportation Situational Awareness Display to study dust emissions.



Incorporation of online resources and GLOBE Observer app protocol *Clouds* allows students and citizen scientists learn more about dust storms in our area.

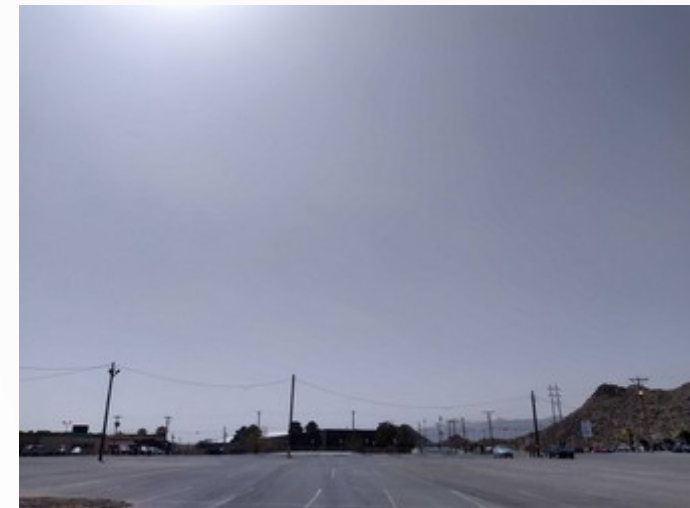
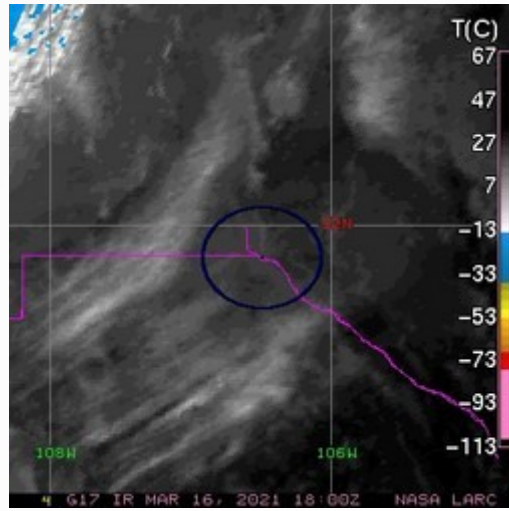
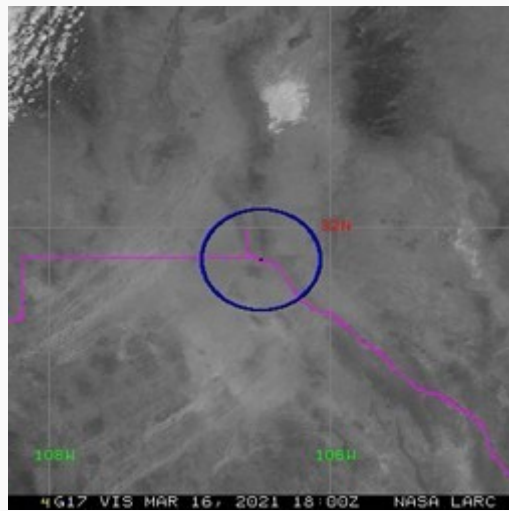


16 Mar 2021 17:51Z NESDIS/STAR GOES-East GEOCOLOR

ArcGIS Dashboard for Dust: snapshot of dust storm on March 16, 2021

Analysis of March 16th Dust Storms

03/16/2021, 12:03 MST



VIR

IR

North

South

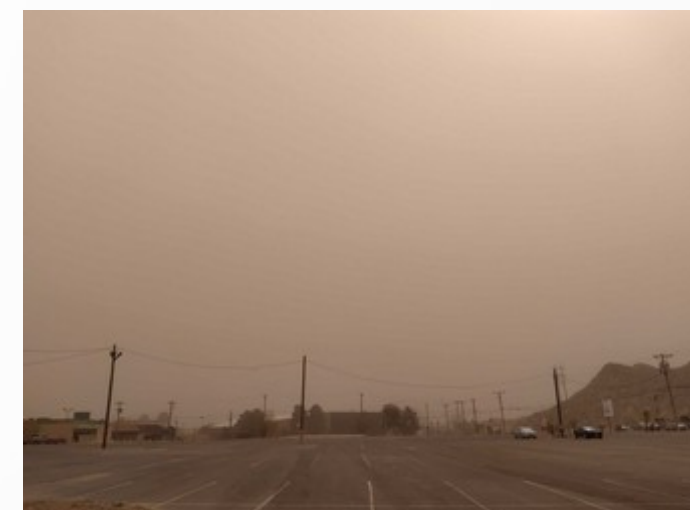
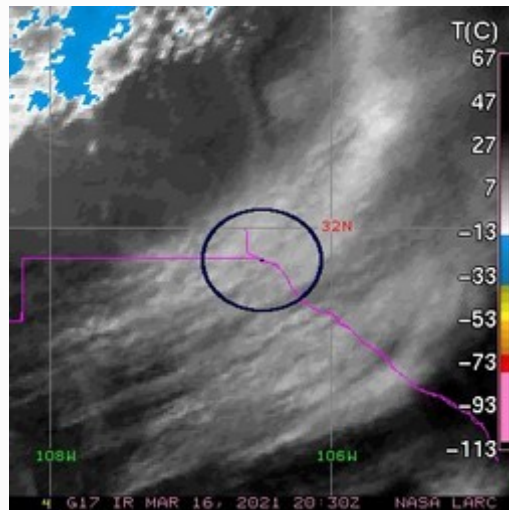
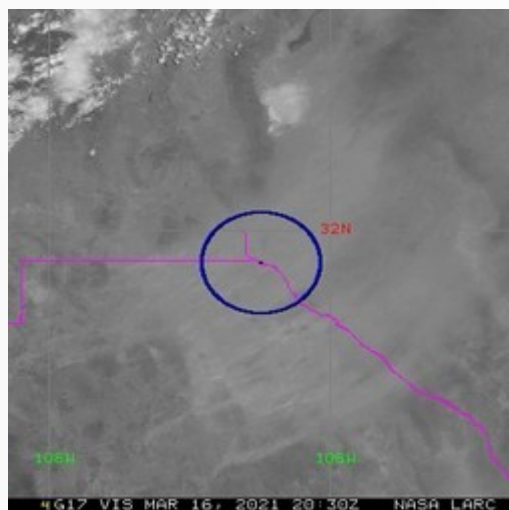
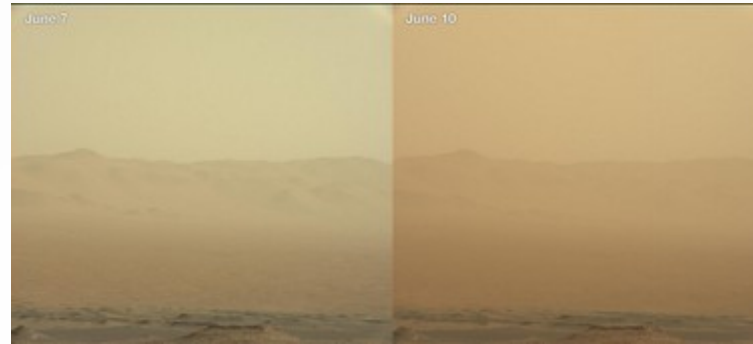
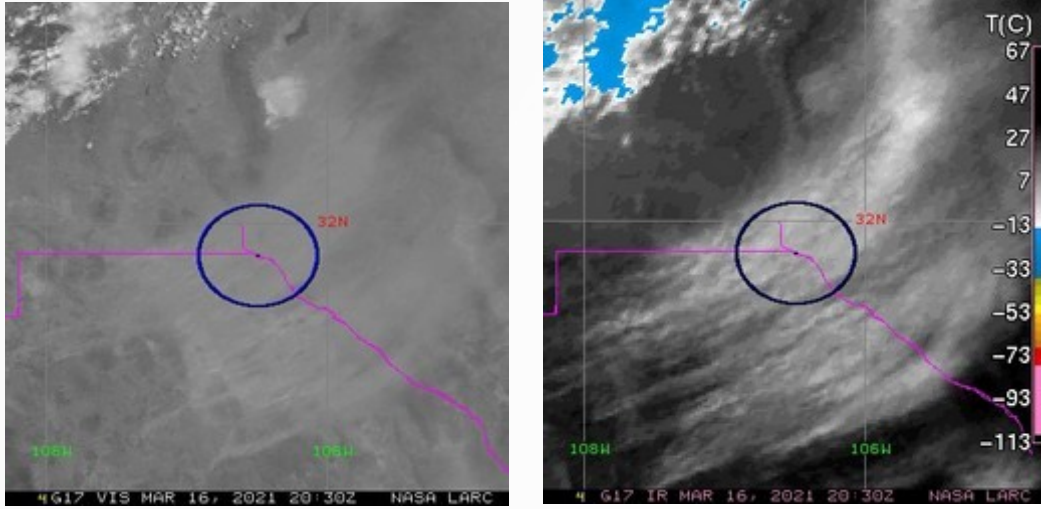


Photo credit: NASA GLOBE

03/16/2021, 14:33MST

Physical science applications



Mars



El Paso (UTEP)

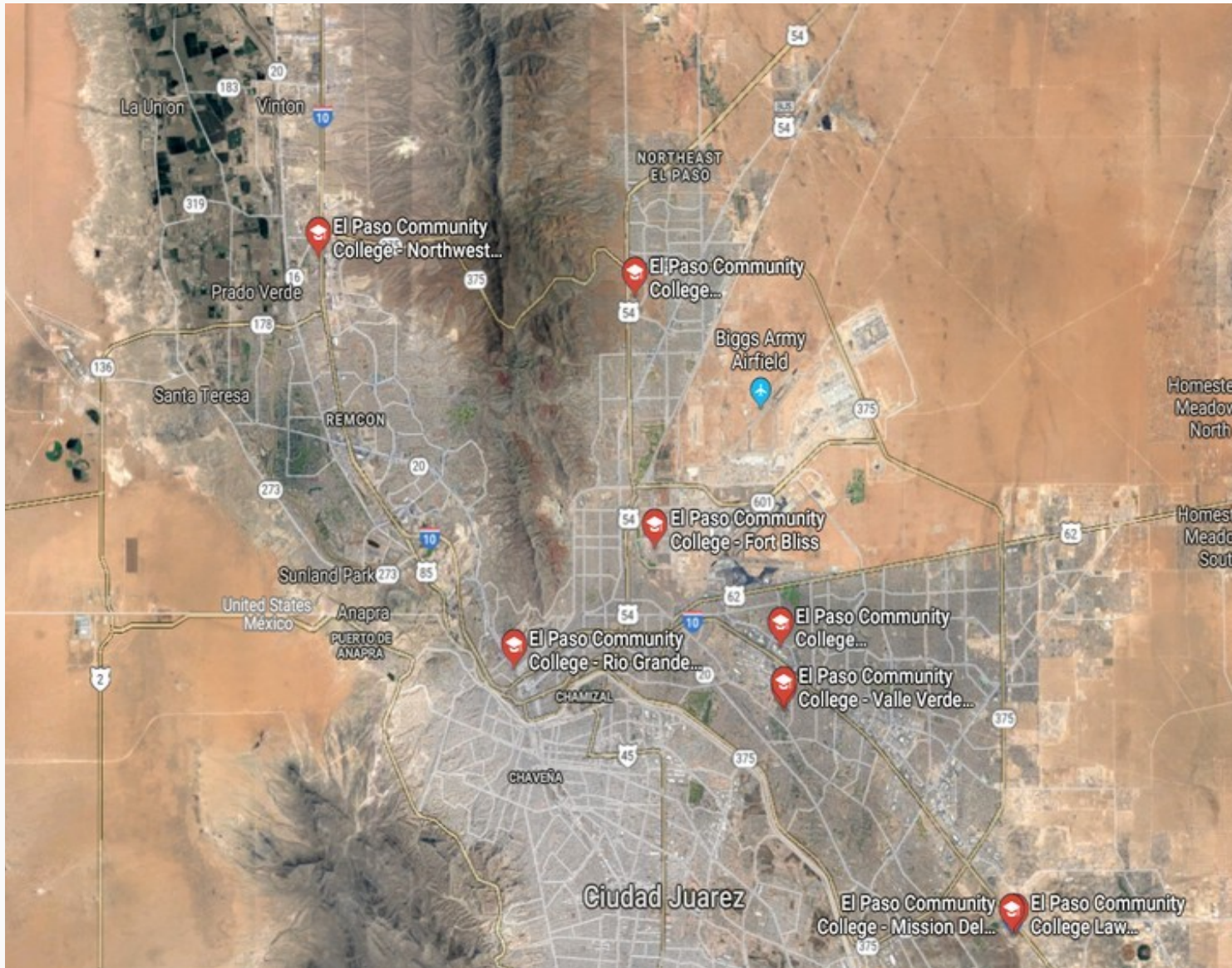
Planetary Science

Applications in Electromagnetic Radiation



Environmental Science

GLOBE Program - Weather Station Network



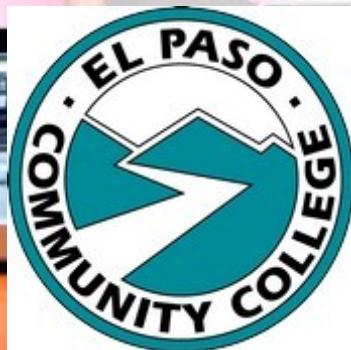
El Paso Community College - Valle Verde Campus



Future work



ONLINE
LEARNING



Works and Collaborations



ED32A-06 - EXPLORING STEAM THROUGH SERVICE LEARNING AND CITIZEN SCIENCE ACTIVITIES: ENHANCING EDUCATION/PUBLIC OUTREACH IN THE INTERNATIONAL COMMUNITY AT EL PASO COMMUNITY COLLEGE AND THE UNIVERSITY OF TEXAS AT EL PASO

Wednesday, 11 December 2019

11:10 - 11:20

Moscone South - 215, L2

Swirl Topics

Ethics, Diversity and Inclusion Field Guide - Track

Science & Society - SWIRL



Link to abstract





**El Paso
Community
College**

Thank You



Questions/
Comments

John Olgin *TM Physics Department*
jolgin@epcc.edu

Dr. Olienka De la O *VV Physics Department*
odelaofe@epcc.edu