

Investigating the impact of surface drag parameterization schemes available in WRF on surface winds

Hongli Jiang^{1,3}, Michelle Harrold^{2,3} and Jamie Wolff^{2,3}

1: NOAA/ESRL/CIRA, Colorado State University

2: NCAR/Research Applications Laboratory

3: Developmental Testbed Center

Acknowledgements: Pedro Jimenez and Cliff Mass



Developmental Testbed Center

Surface drag parameterization

New topo_wind options to improve topographic effects on surface winds in YSU PBL scheme:

–*topo_wind*=1 (v3.4, Jimenez and Dudhia 2012)

$$\frac{\partial u}{\partial t} = \dots - C_t \frac{u_*^2 u}{\Delta z V}, C_t = fn(\Delta^2 h, \sigma_{SSO})$$

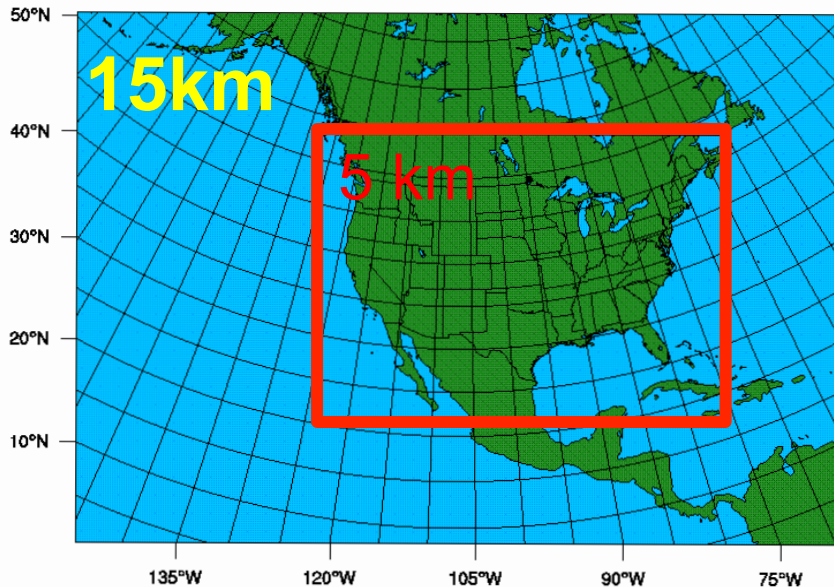
- *h*: topographic height
- σ_{SSO} : Standard deviation of subgrid-scale orography

–*topo_wind*=2 (v3.4.1+, Mass and Ovens 2010; 2011; 2012)

- *Enhancing*: u_* (~subgrid terrain variance)



Testing the New *topo_wind* Option

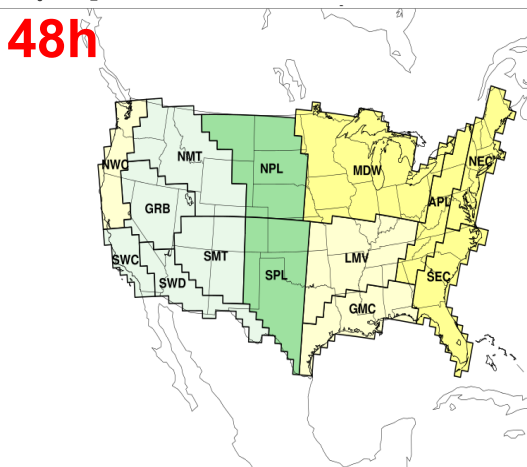
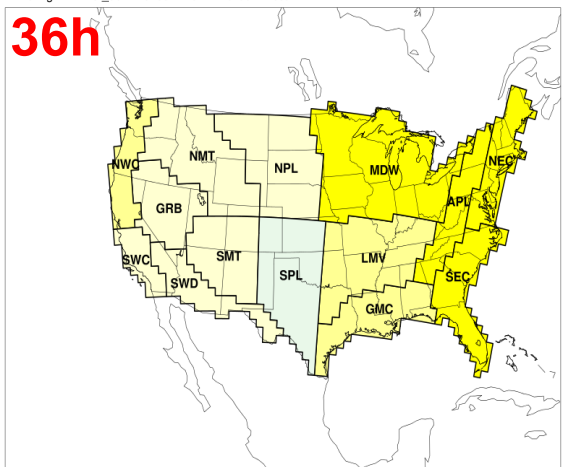
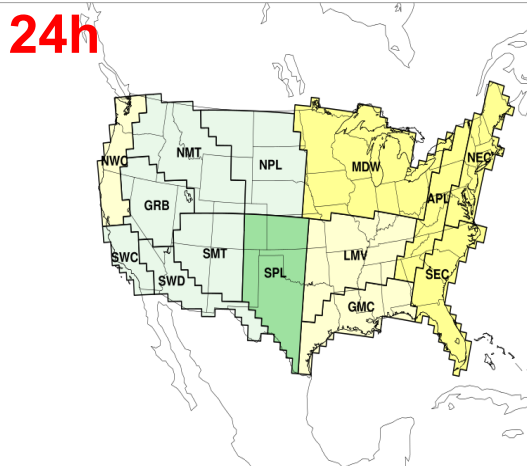
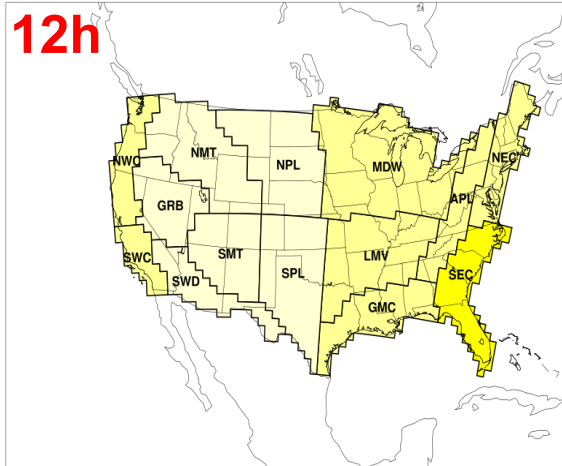


- Year-long simulations: 1 July 2011 – 30 June 2012
- Initialized every 36 h, 48-h forecasts
- Domain: **15-km/5-km** nest
- **Focus on winds**
- Three configurations:
 - *topo_wind*=0 (twind0)
 - *topo_wind*=1 (twind1)
 - *topo_wind*=2 (twind2)
- Comparisons: (5-km domain only)
 - twind0 - twind1
 - twind0 - twind2
 - twind0, twind1, twind2
 - twind1 - twind2

Physics Suite	Test Configuration
Microphysics	WRF Single-Moment 5
Radiation (SW/LW)	Dudhia/RRTM
Surface Layer	Monin-Obukhov similarity theory
Land Surface Model	Noah
PBL	Yonsei University (topo_wind=0,1,2)
Convection	Kain-Fritsch

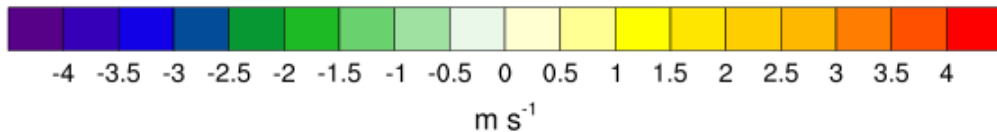
Visit P67 by Harrold et al. for information regarding additional variables for twind0

Surface wind speed bias (*twind0*), 00 UTC INIT



Config=ARWref_d02 Season=Year Init=00Z Fcst Hr=36h

Config=ARWref_d02 Season=Year Init=00Z Fcst Hr=48h

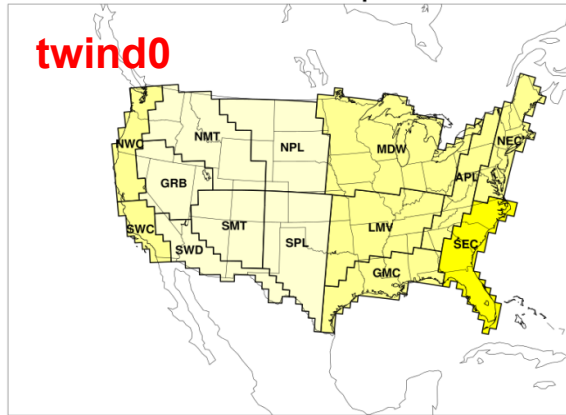


- High wind bias
- Diurnal variation
- Regional variation (East vs. West)
- **Yellow: 0.5 to 1.5 m/s**
- **Green: -0.5 to -1.5 m/s**

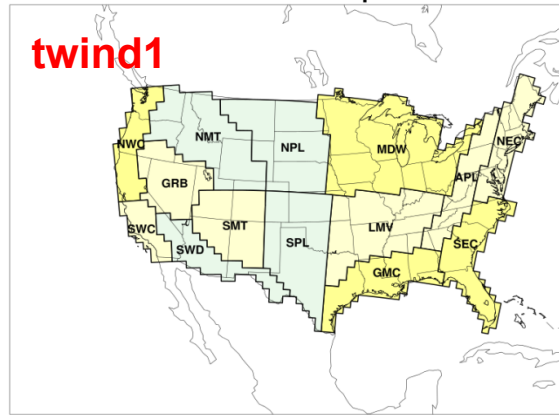
Comparison among three configurations

00f12

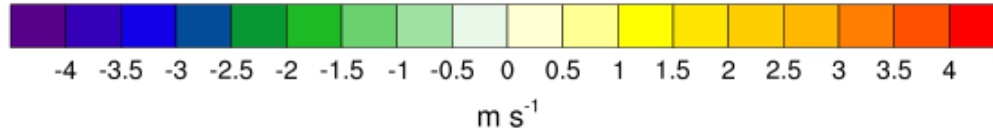
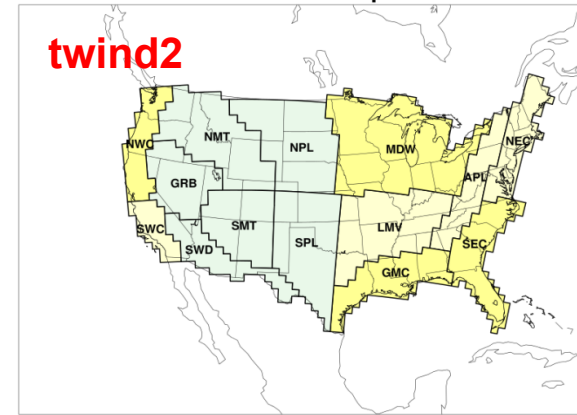
Median Surface Wind Speed Bias



Median Surface Wind Speed Bias

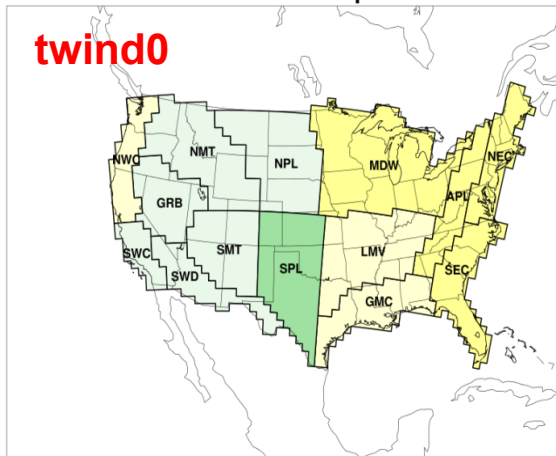


Median Surface Wind Speed Bias

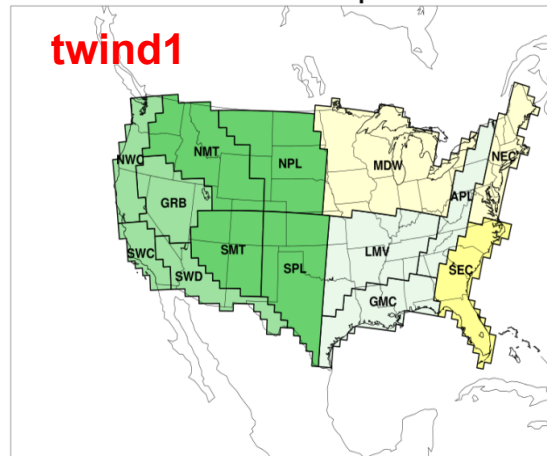


00f24

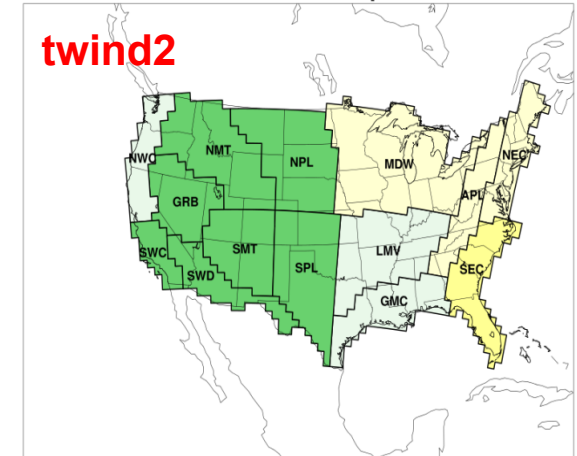
Median Surface Wind Speed Bias



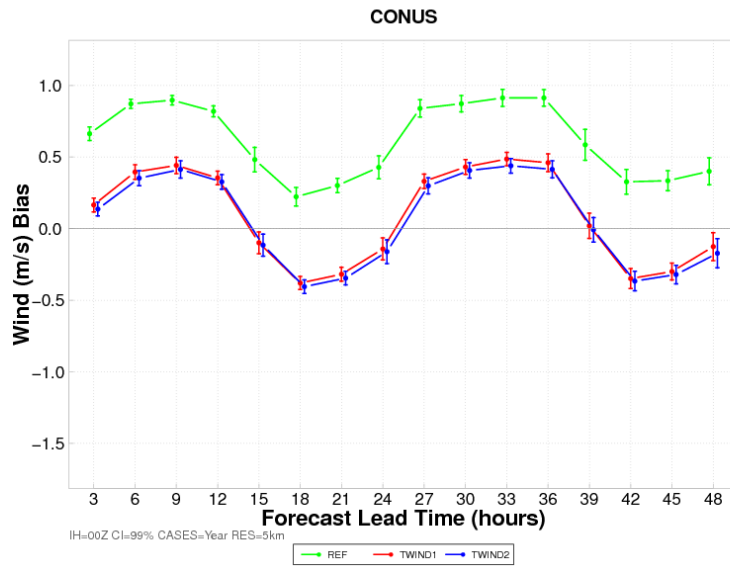
Median Surface Wind Speed Bias



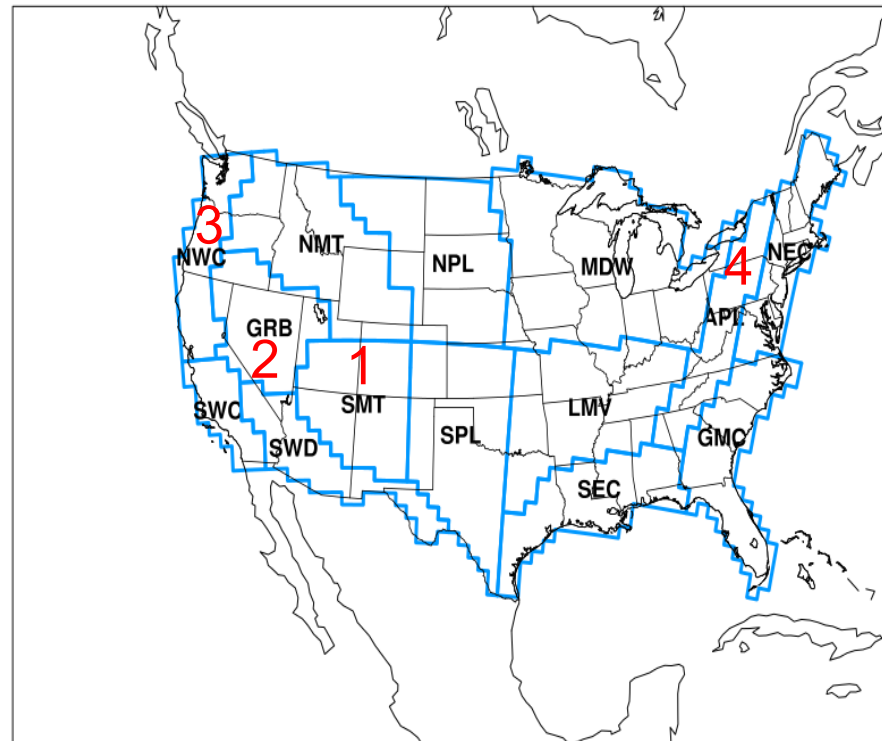
Median Surface Wind Speed Bias



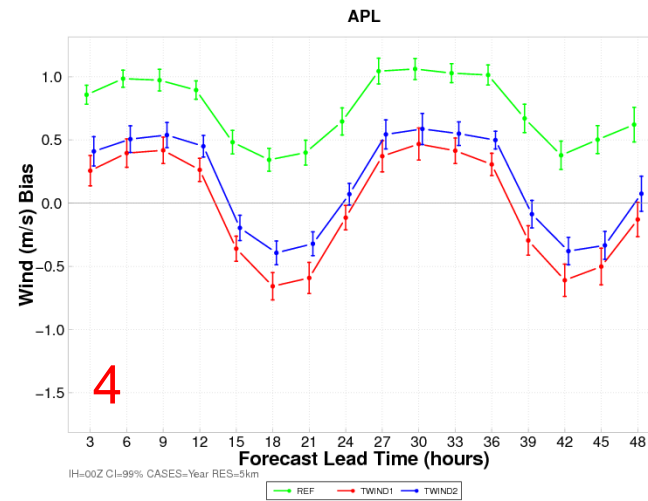
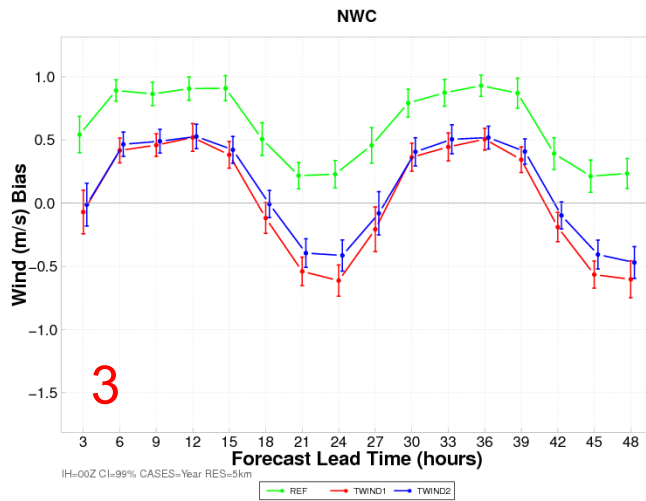
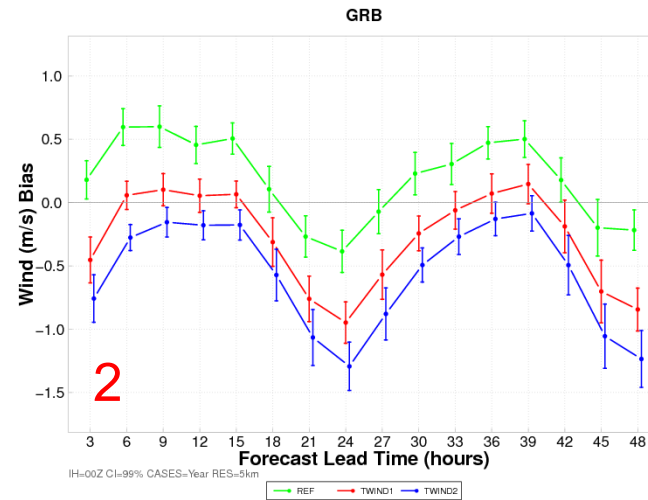
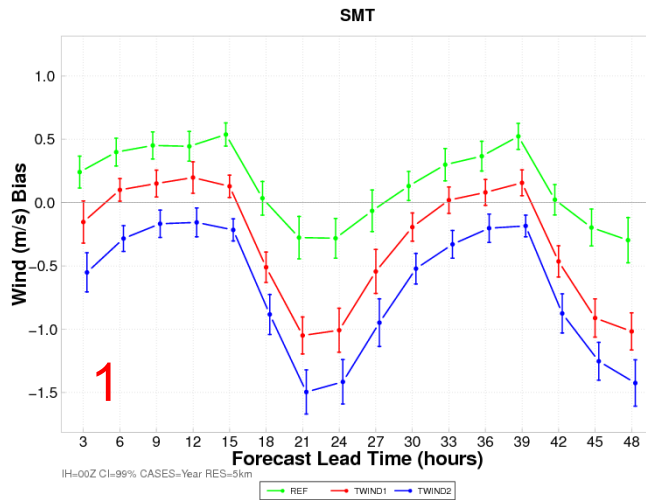
Breakdown by region: twind0, twind1, twind2



- **twind0**: high wind bias for all forecast lead times, maximum bias overnight and minimum during the day
- **twind1**, **twind2**: bias reduced over night, over-corrected during the day

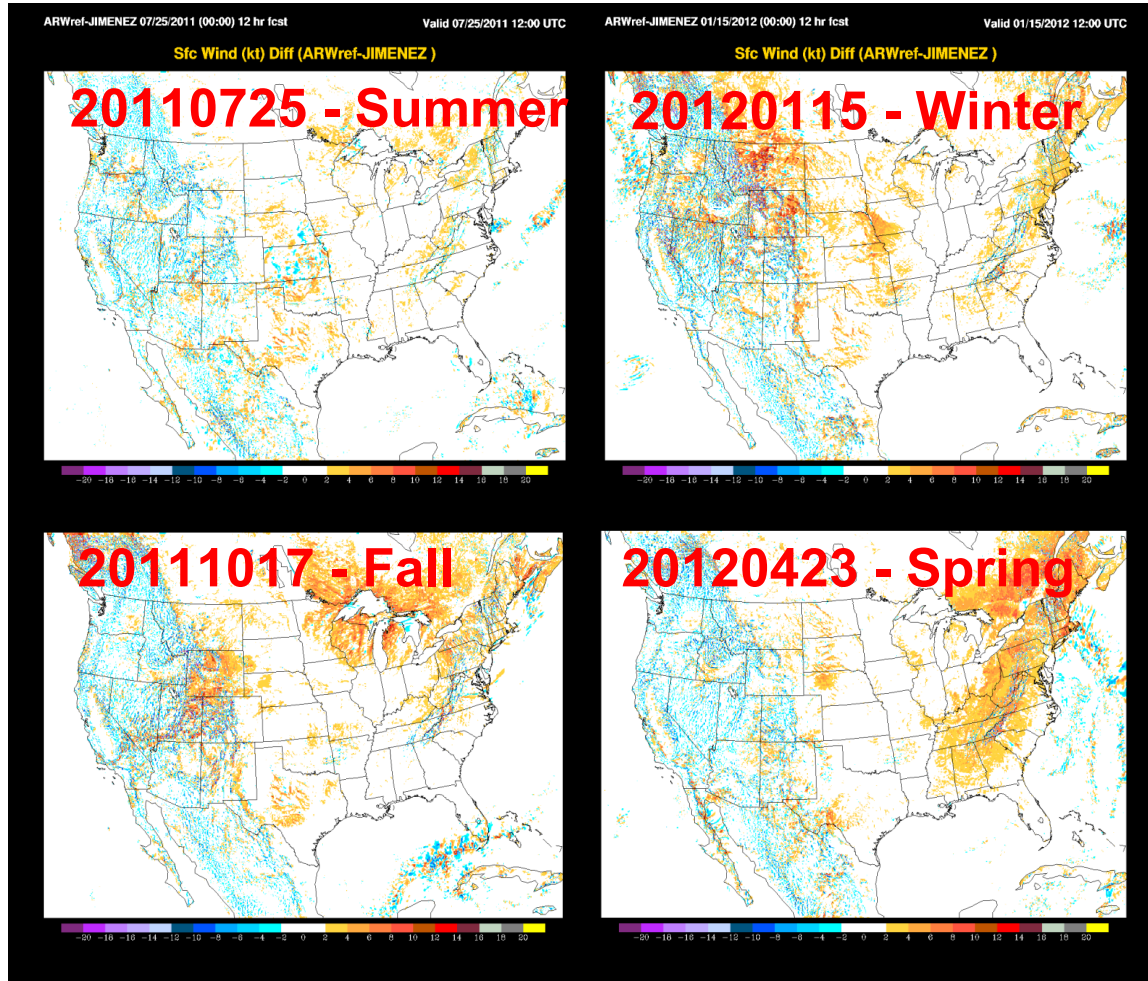


Breakdown by region: twind0, twind1, twind2



Breakdown by season: twind0 - twind1

00f12h



- Very complex pattern for any given day
- Blue: twind1 stronger – generally over Mountain West
- Orange: twind0 weaker – generally over East Plains

Breakdown by season/region: twind0, twind1

Wind (m/s) Bias

Summer

Fall

West region:

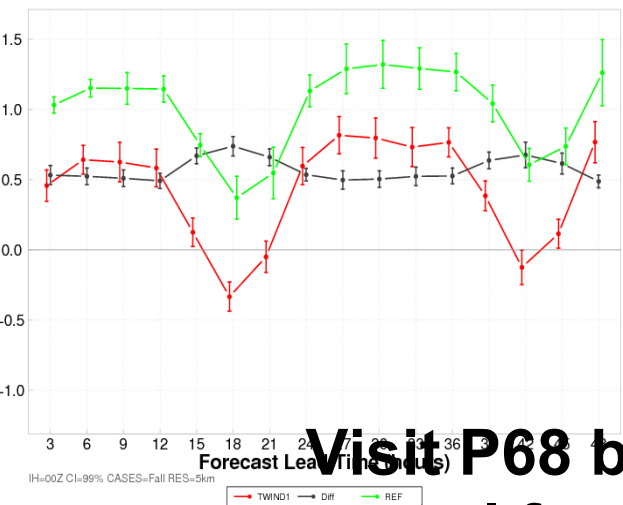
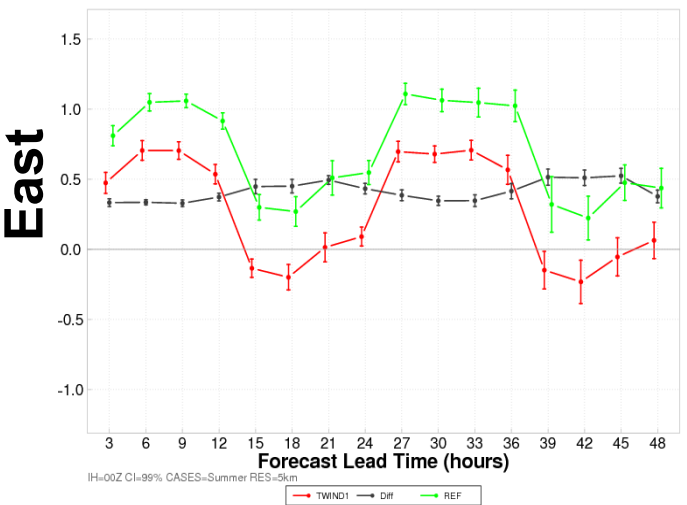
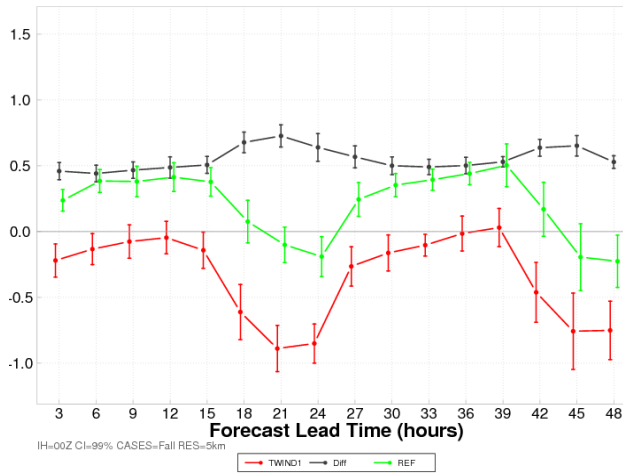
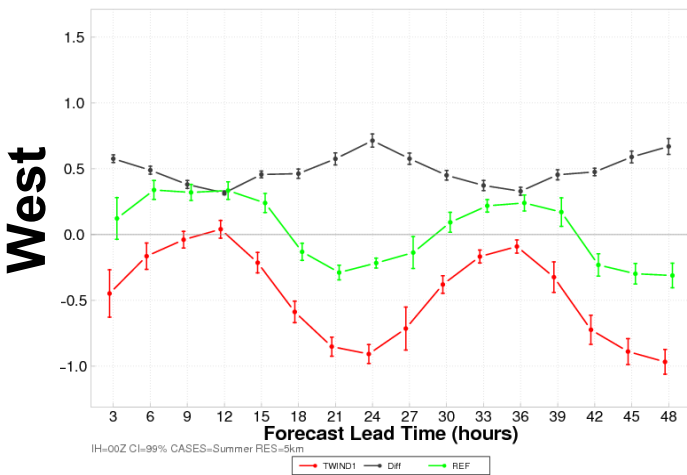
- **twind1 reduces bias to near zero 12h, 36h**
- **Over corrected during the day**

East region:

- **twind1 shifts bias downward**
- **bias still high overnight**

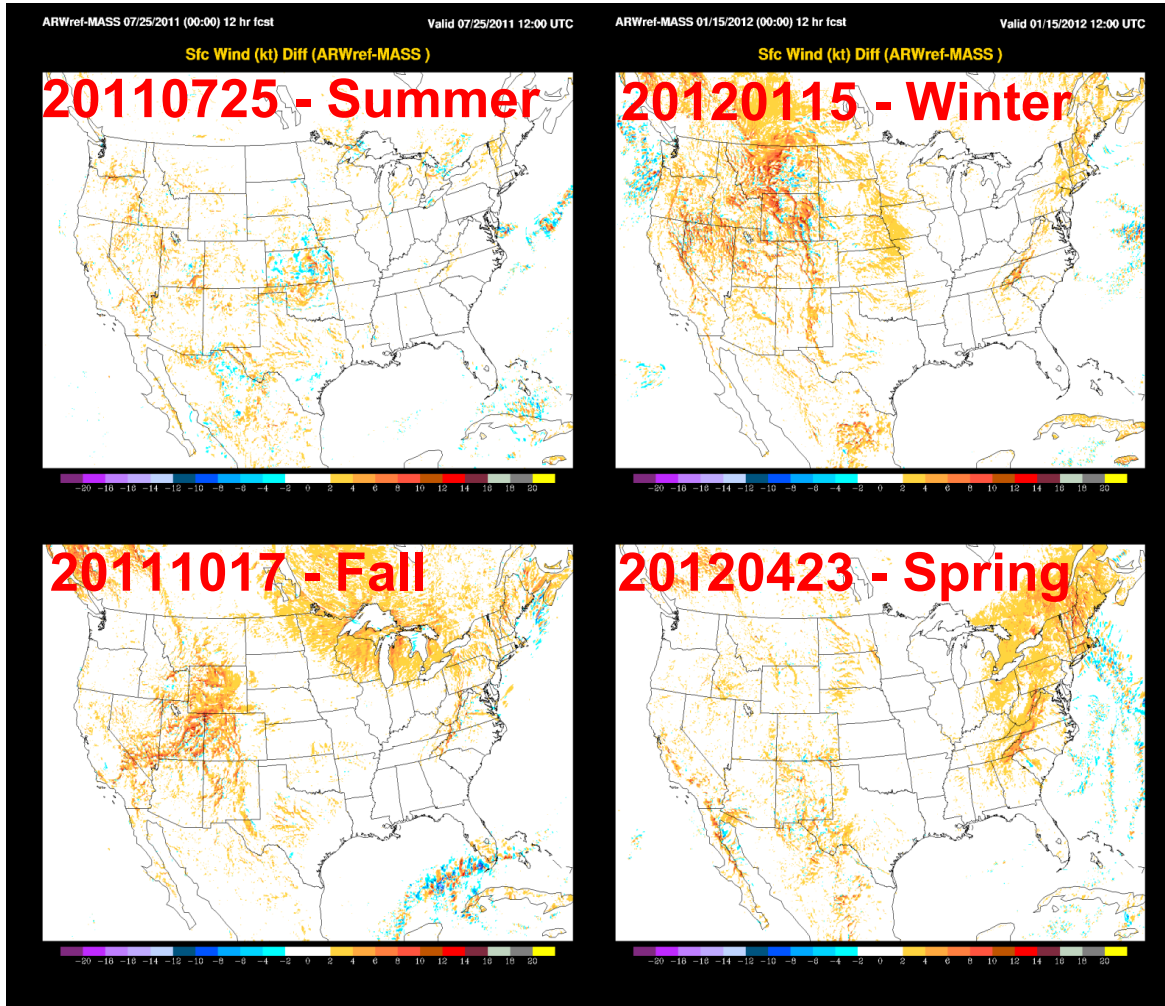
General offset of ~0.5 m/s between the two configurations

Visit P68 by Lorente-Plazas et al for improvement



Breakdown by season: twind0 - twind2

00f12h

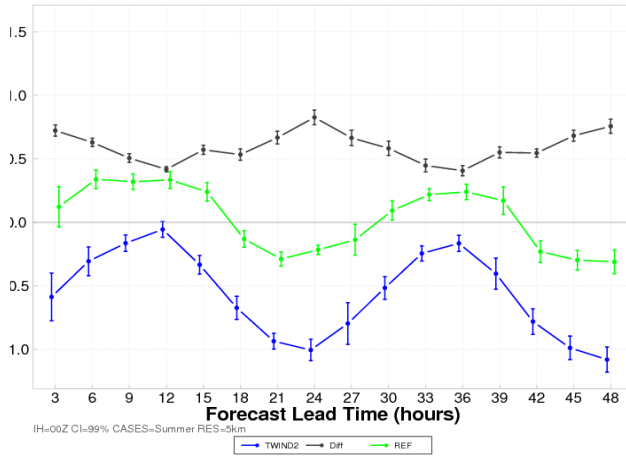


- Orange: twind2 weaker

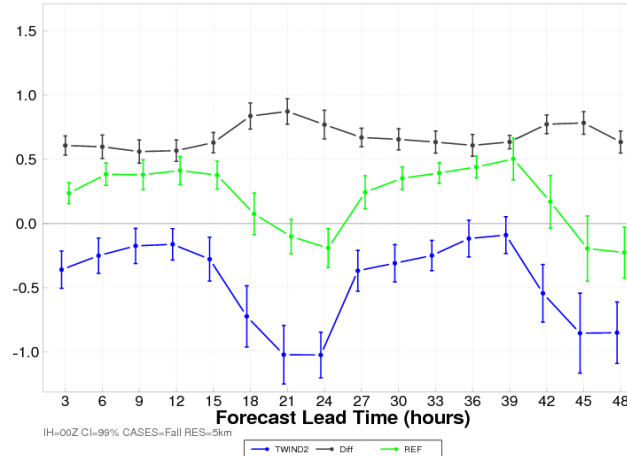
Breakdown by season/region: twind0, twind2

Wind (m/s) Bias

Summer



Fall



West region:

- twind2 reduces bias to below zero 12h, 36h
- over corrected during the day

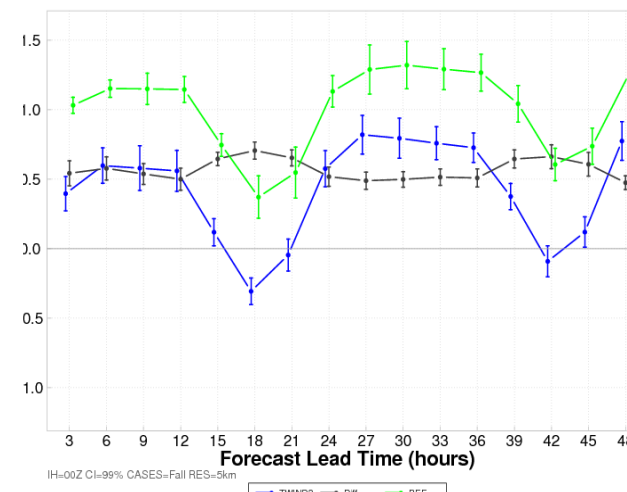
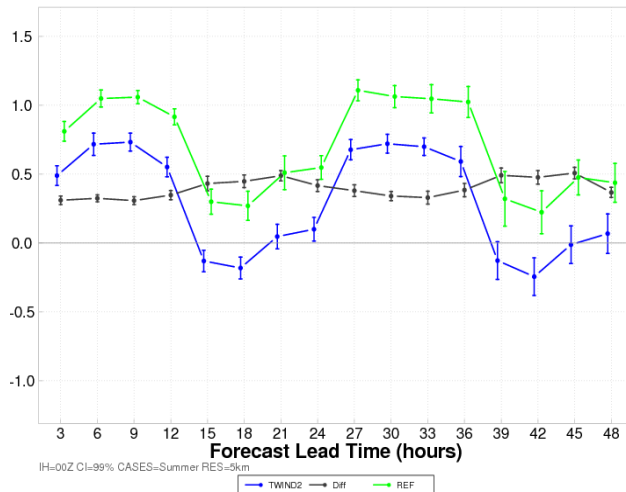
East region:

- bias reduced
- higher than the West

General offset of ~0.5 m/s between the two configurations

West

East



Summary

topo_wind=0:

- High surface wind bias (known issue)
 - maximum at 12 h and 36 h
 - minimum at 24 h
- Higher bias over East, Lower over West (for all seasons)
 - unresolved subgrid topography
 - smoother or flatter topography used in the model
 - absence of topographic drag

topo_wind=1, 2:

- Overall high bias reduced in both options
 - at night: improvement
 - during the day: over-corrected
- Other factors
 - fewer stations over West/Mountains, Hills
 - representativeness error over West
 - is subgrid topograph correctly resolved? at what resolution?

