

American Society of Agricultural and Biological Engineers



Inside ASABE

News for and about ASABE members

November 30, 2017

[Forward this email](#)

In This Issue:

- [From the Executive Director](#)
- [ASABE Hosts World Food Prize Event](#)
- [Board Approves 2018 Initiative Funds](#)
- [Time to Renew Your Membership](#)
- [2018 AIM: Registration, Call for Papers Open](#)
- [Support Your Humanitarian Project with a Giving Back Fund Award](#)
- [AE50 Winners Announced](#)
- [New Faces of ASABE: Deadline December 4](#)
- [ASABE Forums Upgrade Complete](#)
- [AETC 2018: Registration is Open](#)
- [Help Needed with FE Exam PAKS](#)
- [Online Holiday Shopping? Support ASABE with AmazonSmile](#)
- [2018 AIM : Detroit Making Top 10 Lists](#)
- [How Your Input Can Boost Foundation Support for ASABE](#)
- ["In Press" Journal Articles Now Online](#)
- [Reinemann Named UW-Madison Associate Dean for Outreach and Extension](#)
- [Verma Tackles Mt. Kilimanjaro](#)
- [Burkner Honored by Cal Poly](#)
- [In Memoriam - Wendell Bowers](#)
- [Recent Standards Activities](#)

From the Executive Director



A favorite World Food Prize session of mine is the Global Harvest Initiative's release of the Global Agricultural Productivity (GAP) index. The [GAP Report](#), as it's commonly called, does a great job of summarizing how farmers and consumers around the world are striving for agricultural products that are safe, nutritious, affordable, and sustainably produced. Unfortunately, the 2017 GAP report reveals that, for the fourth straight year, global productivity is not accelerating quickly enough to meet the 2050 projected demand for food, feed, fiber, and renewable fuels. And the productivity shortfall is worst in the poorest countries. This is humanity's grand challenge, and agricultural and biological engineers are uniquely

qualified to confront it.

We are more than seven months away from the [ASABE Annual International Meeting](#) in Detroit, Michigan, but it's not too early to start making your travel plans. If you are skeptical about Detroit as a destination city, then you may not know how much the city has changed. For example, on *Lonely Planet's* just-released list of the [top ten cities](#) to visit in 2018, Detroit ranks near the top (second only to Seville, Spain), and it's the only US city to make the list! Start making plans to visit Detroit. You'll be surprised by what you see.

Darrin J. Drollinger
Executive Director

[Back to top](#)

WELCOME
New
Members!

October
2017

Click to see who's
joined
your network of
colleagues

Upcoming
ASABE
CSBE/SCGAB
Section
Meetings
and
Other Events

Central Illinois
December 14

AETC
February 12-14

Engineers Week
February 18-24

Oklahoma
February 23

Click

ASABE Hosts World Food Prize Event



ASABE partnered with the Council on Agricultural Science and Technology (CAST) to host an event highlighting CAST's Communication

Award and ASABE's Global Engagement efforts. The event took place October 18, 2017, as one of the official side events of the 2017 Borlaug Dialogue, hosted by the World Food Prize Foundation.

ASABE presented a panel discussion entitled "Designing the Road out of Poverty: Ensuring Resource Access." The panel addressed the critical role of water and energy in producing adequate food, and the competing demands for those resources. The discussion ended with a Q & A session, providing each speaker with an opportunity to provide specifics about what works best for sustainable food production.

ASABE President Stephen Searcy opened the session with remarks on ASABE's Global Engagement Activities. The panel was then introduced and discussion moderated by Indrajeet Chaubey, associate dean and director of international programs in agriculture, Purdue University. Panelists included Margaret Catley-Carlson, member, Advisory Committee of World Food Prize; Timothy Williams, director for Africa, International Water Management Institute; David Baltensperger, department head, soil and crop sciences, Texas A&M; and Geoff Graham, vice president, plant breeding, DuPont Pioneer.

Also among the panelists was Jayson Lusk, 2017 winner of the Borlaug CAST Communication Award, who was honored just prior to the panel discussion. Distinguished professor and head of the Purdue University Department of Agricultural Economics, Lusk is a consummate communicator who promotes agricultural science and technology in the public arena using multiple forms of media to advocate for science. His blog explores how innovation and growth in agriculture are critical for food security and global progress. His most recent book *Unnaturally Delicious: How Science and Technology Are Serving Up Super Foods to Save the World*, explains how science and innovation are linked with feeding the growing global population.

[Back to top](#)

Board Approves 2018 Initiative Funds

If you've had a new project or service in mind that would benefit the Society, now is the time to bring it forward. The ASABE Board of Trustees, at its November meeting, approved Initiative Funds of up to \$75,000 for 2018. Groups within the Society are now invited to prepare proposals for putting these funds to most effective use.

Initiative Funds make possible new projects and services that further the interests of the Society. Proposals can represent a one-time investment, or a pilot project that, if proven valuable, can become an ongoing activity of the Society. To see a list of previously funded proposals, click [here](#). Proposals are accepted at any time and should align with the Society's [strategic priorities](#).

Submission deadlines and details about the submittal process may be found [here](#).

[Back to top](#)

Time to Renew Your Membership

A friendly reminder that ASABE membership renewals are due no later than January 1, 2018. Here are your options for renewing, if you haven't already done so.

Renew online: This is a fast and easy way to renew. Simply log in to the members-only section of the website from www.asabe.org. Click the "Renew Now" link and follow the directions from there. In most cases, your username is your member number preceded by an M,

and your four-digit birth year followed by your two-digit birth month is your login (equal to six characters). Please call us at 800/371-2723 x7005 or 269/932-7005 if you need assistance with your login or password. Online payments require a credit card, and we accept Visa, MasterCard, American Express, and Discover.

Renew by mail: Please return your original invoice with payment by check or credit card in the envelope provided. Be sure to supply us with updated contact information. If you need another copy of your invoice, please let us know.

Renew by phone: Call us at 800/371-2723 x7005 or 269/932-7005 and we'll be happy to take your dues payment over the phone with a credit card.

Renew by Fax: Fax your completed invoice and credit card payment information to 269/429-3852.



Click
for details

One option that you should *never* choose: emailing your credit card information. We take internet security very seriously and make every effort to keep your correspondence safe, but we urge you to select one of the safer alternatives listed above.

[Back to top](#)

2018 AIM: Registration, Call for Papers Open



Registration is open for the 2018 Annual International Meeting (AIM), July 29 to August 1, at the Cobo Center in Detroit.

We are pleased to offer \$50.00 off of the earlybird rate for registering with your membership dues renewal again this year. Take

advantage of this reduced rate by marking the corresponding box on your dues renewal invoice or when renewing online. This offer is available only until December 31 and only to existing ASABE members.

Stay up to date! ASABEmeetings.org is updated regularly with information about the 2018 AIM. Registration rates and link, Call for Papers instructions and link, travel information, and more are currently available. Explore the "Detroit" link to read some fun facts about "America's Great Comeback City"!

Call for Papers—Now until January 3, 2018

Just a few short weeks remain before the end of 2017—and the deadline for the 2018 AIM Call for Papers. Submit your abstract [online](#), but first check out the available [session topics](#).

[Back to top](#)

Support Your Humanitarian Project with a Giving Back Fund Award

Do you have a humanitarian project that could benefit from financial support? The Giving Back Fund can help.

The fund exists to showcase the knowledge and skills of the agricultural and biological engineering profession through projects that benefit underserved individuals or groups. An ASABE Foundation fund, the Giving Back Fund has money available annually to support one or more projects. Funds have been awarded since 2014, most recently to the [Village Harvest Center](#) project team, led by ASABE members Floyd Dowell, Dan Martin, Jonathan Zeller, and Danny Rogers.

Submissions are due to ASABE headquarters by December 31 of each year. Visit the [website](#) for complete details.

Like the concept of the Giving Back Fund? Donations are strongly encouraged so that more projects may receive financial support. Donors will be asked to designate what portion of their contribution is to be used in the year given, and which portion is to be placed in the endowed fund, from which the future earnings can be used to support projects.

Contact [Dolores Landeck](#) for additional information.

[Back to top](#)

AE50 Winners Announced



ASABE and *Resource* magazine are pleased to announce the 2018 AE50 winners.

AE50 awards honor the year's most innovative designs in engineering products or systems for the food and agriculture industries. The products will be featured in the January/February 2018 special issue of ASABE's magazine *Resource: Engineering & Technology for a Sustainable World*.

For a list of the winners click [here](#).

[Back to top](#)

New Faces of ASABE: Deadline December 4

December 4 is the deadline for nominations for New Faces of ASABE!

New Faces of ASABE recognizes the outstanding talents and passions of the rising generation of engineering leaders, whose work is already having significant impact on public welfare around the globe. The program has two categories: College Edition, for undergraduates, and Professionals, for engineering graduates 30 years of age and younger. ASABE offers its College Edition winner a \$1000 scholarship, while the winner in the Professionals category is invited to travel to Washington, DC, to represent ASABE at Engineers

Week activities.

The nomination form is a breeze, but don't delay! The deadline is just a few days away. Find all you need [here](#).

[Back to top](#)

ASABE Forums Upgrade Complete

The upgrade to the ASABE Forums technology is complete. The new platform is now in full use, and the old platform, eForums, will be taken offline December 1.

ASABE Forums is your digital tool for committee correspondence and collaboration. As with the old platform, you'll find the ASABE Forums link on the My ASABE page after you log in to the website. The new ASABE Forums has a different look, but committee information remains the same. We have moved information in the document library to the new site. Previous postings sent via the obsolete eForums will be deleted.

Please update your email contacts list to reflect a slight change to committee email addresses initiated with the new platform: All emails now have the added prefix asabe-, and the address is @forums.asabe.org, as shown below:

Old: pafs-03@eforums.asabe.org

New: asabe-pafs-03@forums.asabe.org

Email sent via the new ASABE Forums will be archived there. Contact staff with any questions: [Walter Brace](#); [Scott Cedarquist](#); [Carla Vangilder](#); [Jean Walsh](#).

[Back to top](#)

AETC 2018: Registration is Open



It's the premier event for emerging technologies and trends in agricultural equipment: Join us for the 2018 Agricultural Equipment Technology Conference, February 12 to 14, at the Seelbach Hilton in Louisville. Registration is open and early bird rates expire January 3.

To register, go to www.asabe.org/aetc2018. Here you'll find current information on the program, CPDs, the electronic poster session, the committee meeting schedule, and more.

Supplier Showcase: Do you have a product that you would like to promote at AETC? Join the Supplier Technology Display and interact with professionals in the agricultural equipment engineering fields.

Accommodations: ASABE has secured a block of rooms at a reduced rate at the Seelbach for attendees of AETC. Rooms are available until January 11 or until the room block is full.

[Back to top](#)

Help Needed with FE Exam PAKS

NCEES is seeking volunteers to work with them to help conduct a Professional Activities and Knowledge Study (PAKS), for the Fundamental of Engineering (FE) exam, as required by the NCEES Exam Development Procedures Manual. Those seeking their PE designation must first pass the FE exam; ASABE members typically take the FE exam in "Other Disciplines."

The first step in the PAKS process is the survey creation meeting. There will be multiple meetings that follow—specification creation and standard settings—for each FE discipline module, so NCEES will need lots of new volunteers to assist with this process.

If you are interested in lending your expertise in participating in the FE PAKS, please contact [Cheryl Warren](#), NCEES, for further information.

[Back to top](#)

Online Holiday Shopping? Support ASABE with AmazonSmile



Did you know that ASABE participates in AmazonSmile, a program started by Amazon to give back to your favorite charity?

Simply follow this [link](#), and Amazon will select ASABE as your charity of choice. Every time you shop through Amazon, 0.5% of your purchase will be donated to ASABE. It is as simple as that! No need to pay extra or donate separately; Amazon automatically donates a percentage of your purchase to the

Society.

Note: To take advantage of the program, always remember to begin your shopping at [smile.Amazon.com](https://www.amazon.com/smile).

[Back to top](#)

2018 AIM : Detroit Making Top 10 Lists



As we look towards Detroit, and the 2018 Annual International Meeting (AIM), we've been noticing a trend. Detroit is having a renaissance, and travel experts are taking notice. Read why the [New York Times](#) lists it as No. 9 and [Lonely Planet](#) as No. 2 (and

the only US city on the list) for recommended travel.

Make [Detroit](#) a part of your summer travel plans and attend the AIM July 29 to August 1.

[Back to top](#)

How Your Input Can Boost Foundation Support for ASABE

The E-06 Foundation Liaison Committee is pleased to announce it now has a process in place to collect fundraising foci from the membership. [A webpage](#) fully explains E-06 and the process for submitting a Fundraising Focus Proposal Form, a necessary step to bring your ideas for fundraising to light. It also explains the difference between this process and the Initiative Fund. The key to avoiding confusion is to remember that E-06 accepts and funnels through ideas for fundraising focus, and the Initiative Fund is an existing, board-approved set amount of money to which groups within ASABE may apply for funds. In other words, E-06 collects, reviews, and recommends foci for fundraising efforts to the Foundation board, upon ASABE board approval.

We need your ideas in support of ASABE goals for initiatives and activities to focus our fundraising efforts! Please direct all questions to E-06 chair [Dave Murray](#).

[Back to top](#)

"In Press" Journal Articles Now Online

Accepted journal manuscripts are now included in the ASABE Technical Library before editing or page layout, a move that accelerates citability. They will be removed when the final, edited version is published. Searches include in-press articles and are identified with the term *in press* in the citation. A list of in-press articles can be viewed by going to the [Publications Included](#) page and clicking on a journal name.

Note that the DOI will not be active until shortly after the issue containing the article is published. Example of how to cite in-press articles:

Authors. Year. Article title. Trans. ASABE (in-press).
<https://doi.org/10.13031/trans.12488>

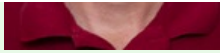
[Back to top](#)

Reinemann Named UW-Madison Associate Dean for Outreach and Extension



Doug Reinemann, chair of the Department of Biological Systems Engineering, has been named University of Wisconsin–Madison's College of Agricultural & Life Sciences (CALS) associate dean for extension and outreach. In this role, Reinemann will be in charge of the organization, content, and effectiveness of the college's extension and outreach programs, as well as aligning CALS programs with those of UW-Extension Cooperative Extension. Read the [full article](#).

Reinemann is a 30-year member of ASABE.



[Back to top](#)

Verma Tackles Mt. Kilimanjaro



Many of us spent time over the recent US Thanksgiving holiday reflecting on the people, events, and circumstances for which we're grateful. Brahm Verma's reflections likely included the experience of a lifetime: Verma earlier this fall climbed Mt. Kilimanjaro.

Culminating on September 7, 2017—exactly 56 years to the day he first landed in New York City's Anderson Field, in 1961—Verma's ascent took him a soaring 15,300 ft, to Camp Kosovo, a base camp for

the final leg of the climb. In great health and with energy to spare, the 78.5-year-old Verma experienced none of the altitude sickness that afflicts some adventurers. Nevertheless, he reluctantly heeded the advice of others, including healthcare professionals, who discouraged him from going beyond Camp Kosovo to the summit, warning of remote but serious complications that can afflict senior climbers.

With nearly ten years on the oldest of his fellow climbers, Verma was clearly an impression-maker whose accomplishment was not lost on the others. "Climbers on the trail stopped and admired my effort, often greeting me by calling, 'Go, Pop!' and 'Go, Grandpa!' Some even stopped to take a picture with me," he says. "It was quite an experience."

Verma took a piece of ASABE on his climb, carrying an ASABE t-shirt given to him for the trip. "ASABE has been the society where I grew up professionally," he says. "I have been a life-long member of it and appreciate its contribution to my growth." In addition, Verma recorded a video at Camp Kosovo that captures those sentiments from at very high altitude. Click [here](#) to enjoy.

[Back to top](#)

Burkner Honored by Cal Poly



ASABE Fellow Paul F. Burkner was honored at a celebration and awards dinner presented by the Cal Poly Alumni Association on November 3.

Burkner received the 2017 Honored Alumni Award, College of Agriculture, Food and Environmental Sciences. It is the highest honor bestowed upon Cal Poly alumni by the university's Alumni Association. The award was established more than 60 years ago to provide recognition for outstanding graduates and former students at Cal Poly.

Burkner is a 1964 graduate in agricultural engineering and earned a master's in agricultural engineering from the University of Hawaii at Honolulu in 1966. He started his career as an applied mechanization researcher for the US Department of Agriculture in 1966 and co-founded Ag Industrial Manufacturing, Inc., (AIM) in 1979. Burkner is known for his innovations and inventions in the field of custom ag machinery. He developed a new concept for a grape harvester in 1980 that is still in use today, and he has continued to develop countless harvesters and machinery for a diverse group of crops and various agricultural needs. The owner of several patents, Burkner was inducted into the San Joaquin County Agricultural Hall of Fame in 2009, the same year he was named an ASABE Fellow. He is an active member of the Cal Poly bioresource and agricultural engineering department advisory committee and makes a point to hire several Cal Poly students to intern at AIM each year, where he has a direct hand in their training.

Burkner is a 53-year member of ASABE.

[Back to top](#)

In Memoriam - Wendell Bowers

ASABE Fellow Wendell Bowers passed away on October 18, 2017. He was a Green Valley, Ariz., resident at La Posada since 1999 and was formerly from Stillwater, Oklahoma.

Bowers was born near Danville, Ill., in 1926 to Lela and Ross Bowers. After graduating from Potomac High School, he entered the Navy V-12 program and received officers' training at the University of Notre Dame, Indiana State University, and the University of Illinois. Wendell received his commission in 1947. He returned to the University of Illinois to complete BS and MS degrees in agricultural engineering.

Bowers spent 16 years on the faculty at the University of Illinois and 18 years at Oklahoma State University as an extension agricultural engineer. He authored numerous books and publications specializing in farm machinery management. In 1968 he was presented the Superior Service Award from the United States Department of Agriculture. He was named a Fellow of ASABE in 1971. He retired in 1985.

On September 18, 1948, Bowers married Dorothy Peterson. The couple moved to the La Posada retirement community in 1999. Bowers was passionate about service to others and also valued the importance of education. He immediately started working to establish a scholarship program for the La Posada employees to further their educations. As the program grew and developed, it received local, state, and national recognition. In 2004, Bowers received the Volunteer of the Year award from AZAHA, a state association working on behalf of those serving seniors in Arizona, and in 2006 he was honored with the national Community Champion Award from the National Association of Area Agencies on Aging. An endowment has been established in his name.

Dotty passed away on September 19, 2006. Wendell married Sue Poppaw on March 31, 2012. Bowers had many hobbies: traveling, golfing, gardening, fishing, camping, and playing cards, just to name a few. He loved following all types of sports teams, especially his Chicago Cubs and his Oklahoma State Cowboys. He had a wonderful sense of humor and was a great storyteller. His generosity was felt by all who knew him. But most of all, Wendell loved his family, and by far his favorite thing to do was to spend time with them.

Bowers is survived by his wife, Sue. He is also survived by his three daughters: Betsy Aldridge of Mount Vernon, Wash., Louise (Collin) Fry of Odessa, Tex., and Kristin (Richard) Nelson of Olathe, Kan. He is survived by grandchildren Kerry Aldridge, Bellingham, Wash.; Jackie (Bryce) TeBeest, Olathe, Kan.; Kevin Peterson, Odessa, Tex.; Kelley (Wes) Strouts, Mission, Kan.; and Kate Peterson, Austin, Tex. He is also survived by three great-grandchildren.

In lieu of flowers, contributions can be made to the La Posada Scholarship Fund at 350 Morningside Dr., Green Valley, Ariz.

[Back to top](#)

Recent Standards Activities

Proposed Projects

- X653 Recommended Practice for Heating, Ventilation and Air Conditioning (HVAC) Products Used in Indoor Plant Growth and Development

New Revisions

- ANSI/ASABE AD11684:1995 APR2011 (R2016ED) Cor. 1 Tractors, machinery for agriculture and forestry, powered lawn and garden equipment - Safety signs and hazard pictorials - General principles

Click [here](#) for a complete listing of ASABE Standards project activities, including recent press releases.

[Back to top](#)



Dolores Landeck - Editor
2950 Niles Rd. St. Joseph MI 49085
phone: 269-932-7039
www.asabe.org

Inside ASABE

[Unsubscribe or update your email address.](#)

2950 Niles Rd. | St. Joseph, Michigan 49085 | USA



SubscriberMail