

American Society of Agricultural and Biological Engineers



Inside ASABE

News for and about ASABE members

May 30, 2020

Forward this email

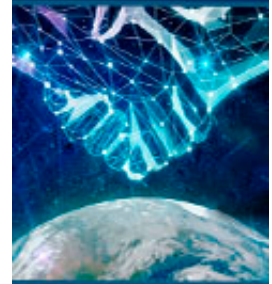
In This Issue:

- [From the Executive Director](#)
- [Highlights from the April Board of Trustees Meeting](#)
- [President-Elect, Trustee Nominees Sought for 2021; Nominating Committee Positions to Be Filled](#)
- [Congratulations to the 2020 Class of ASABE Fellows](#)
- [Highlight Your Academic Program in "Explore" - Deadline Extended to June 1](#)
- [ASABE Award Winners Announced](#)
- [New Name, Same Acclaim](#)
- [Authors! Publish in ASABE's Peer-Reviewed Journals](#)
- [AIM 2020 Paper Upload Deadline Extended](#)
- [Enjoy a Discount When You Choose to Publish Your AIM Presentation with ASABE Journals](#)
- [VisualChallenge10](#)
- [Help Update Dept of Labor's Ag Engineering Occupational Description](#)
- [Guide to Consultants Now Available](#)
- [ASABE's Gayle Baker Subject of DiscoverE Interview](#)
- [Committee Spotlight: ES-310](#)
- [Using Zoom? Be Sure to Update Your App](#)
- [Recent Standards Activities](#)
- [In Memoriam - Kenneth R. Beerwinkle](#)
- [In Memoriam - James Polacek](#)

From the Executive Director

Through world wars and even the 1918 flu pandemic, ASABE has never *not* held an annual in-person meeting—until now. Yet never has gathering the entire ASABE community been more important. These are lines from the message we sent out providing more details about the 2020 Annual International Meeting (AIM), which

#ASABE2020



The
ALL-VIRTUAL
event
begins

JULY 13

Registration
opens

JUNE 1





will be virtual and on demand. We were looking forward to Omaha with all the major planning completed and then like so much else impacted by COVID-19, plans changed.

The virtual AIM promises to be innovative, flexible and indispensable. Will it be the same experience as an in-person event? No. Nothing replaces the intangibles from interacting face-to-face. However, some things will be better.

For many years I worked in the safety and standards areas, and attending ASABE committee meetings and an occasional social event like a reception or meal was basically my AIM experience. A virtual AIM offers a brand-new paradigm. You can participate in standards meetings, for instance, in real time, and then view all the technical and poster presentations on demand. The opportunity to absorb content is huge.

We anticipate the question: Well if it's virtual, why isn't it free? It's true that many of the traditional costs from an in-person meeting are eliminated, such as food and beverage, room rentals, A/V and travel; however, we have new costs associated with a virtual meeting partner and the technology platform, which will enable the meeting to be produced and archived. ASABE has had stable financials from year to year but the pandemic has changed everything. The registration rates were selected to balance the anticipated value the virtual AIM will provide—and the value is substantial—and the necessary revenue to keep ASABE functioning.

Watch for the forthcoming relaunch of asabemeetings.org, where you will find the registration portal, as well as program and scheduling details as they become available. We look forward to seeing you at this year's AIM.

Darrin J. Drollinger
Executive Director

[Back to top](#)

Highlights from the April Board of Trustees Meeting

The ASABE Board of Trustees met via videoconference Thursday and Friday, April 16 and 17, 2020, with President Sue E. Nokes presiding. The group spent significant time discussing the impact of COVID-19 on ASABE. A small group of Society leadership and Meetings Council leadership were identified to reconvene, targeting a May 6 decision date for the 2020 ASABE Annual International Meeting (AIM).

The financial report was presented by Mark Zielke, senior director of finance, meetings and human resources. COVID-19 is putting pressure on all revenue streams: AIM registration during March and April was down, membership dues have flattened, and page charges are coming in slowly. With a strong restricted reserve, the Society financial position remains stable, but the current realities will make the historically strong support of ASABE members, in all forms, especially welcome at this time. Leadership will continue to closely monitor the situation and respond quickly to opportunities that best serve our members and the Society.

In other business, the Board:

- Heard from Lalit Verma, who gave an overview of the developing ASABE project to lead a request to the National Academies' Board on Agriculture and Natural Resources for a comprehensive study on circular economies for food and agricultural systems.
- Reviewed the 2019 metrics report and discussed trends and progress towards the ASABE goals.
- Approved the proposed Foundation mission and vision statements, which will be especially helpful in fundraising with non-members less familiar with ASABE.
- Adopted a conduct policy that strengthens the integrity of ASABE's honors and awards program. The policy will be soon be available on the ASABE



**WELCOME
New
Members!**

Welcome to our
new, reinstated,
and
student-transfer
members added
to the
ASABE family in
the month of
APRIL

Click to see
who's joined
your
professional
network!

website.



Many committee, representative, and staff reports were shared providing updates to leadership. The preprofessional council's request for a name change was approved, and the group will now be known as the *International Student Branch*. We received the welcome news

that ASABE has been approved as the US TAG administrator for ISO TC326, Machinery intended for use with foodstuffs. Staff shared plans to continue progress on strategies to towards achieving our goals and impacting the metrics, which include membership numbers, as illustrated in the accompanying chart.

Much conversation took place at the Board meeting on the 2020 annual international meeting, and at the time of writing, we are making the switch to an all-virtual AIM. The in-person experience, with its high synergy and networking potential, will remain the clear standard for ASABE events. However, we anticipate that this year's format will provide unique successes of its own, and we're very confident that the virtual experience will be a positive one, in large part because our members have already started down the digital path. ASABE members are highly engaged in the work of the Society, and they're accustomed to using the digital tools, like Forums, in which we've invested to support that work.

We are grateful to our members for their strong engagement in Society activities. And as the world lately has grown sharply aware of the importance of food systems, that engagement will grow ever more valuable.

Stay safe and take care everyone. Thanks for your support and we look forward to seeing you at AIM.

--ASABE Board of Trustees

[Back to top](#)

President-Elect, Trustee Nominees Sought for 2021; Nominating Committee Positions to Be Filled

With this year's elections behind us, and new officers prepared to take their positions in July, at the end of the annual meeting, it is time to look ahead to the 2021 leadership ballot.

Nominees are being sought for president-elect and three trustee positions. Nominating committee positions will also be filled for the technical communities and districts, including ASE, ES, ITSC, MS, NRES, PRS, District 2, and District 4.

Members of the Nominating committee have the serious but rewarding task of securing candidates for the Society's annual election of officers, which include the president-elect, board trustees, and members of the Nominating committee itself. The slate they prepare is then presented in January for ballot by the general ("corporate") membership. The committee comprises representatives from each of the Society's technical and geographic units, as well as the international membership, who currently serve on staggered two-year terms.

Those wishing to put forth nominations are encouraged to submit names and supporting materials to the Nominating committee by July 1. Current committee members are as follows, with the group each represents shown in parentheses:

**NEBRASKA
TRACTOR
TEST
LAB**



For more than a
century

championing
PERFORMANCE

keeping pace
with
TECHNOLOGY

Read the
RESOURCE
feature article



[Steve Searcy](#) (chair), [Tami Brown-Brandl](#) (PAFS), [Jeremiah Davis](#) (District 2), [Bill Field](#) (ESH), [Dick Godwin](#) (International), [Jay Harmon](#) (District 3), [Kenneth Hellevang](#) (District 5), [Sherry Hunt](#) (NRES), [Carolyn M. Jones](#) (District 4), [Deepak Keshwani](#) (PRS), [Joe Luck](#) (MS), [Dana Porter](#) (EOPD), [Randall Reeder](#) (District 1), [Steve Taylor](#) (ES), [Paul Weckler](#) (ITSC), and [Lisa Wilken](#) (ASE).

[Back to top](#)

Congratulations to the 2020 Class of ASABE Fellows

ASABE is honored to announce the 2020 Class of Fellows. These individuals will be inducted as ASABE Fellows during a virtual ceremony during the Annual International Meeting. Details for the ceremony will be posted [online](#) when available.

ASABE Fellows—Class of 2020

James P. Bordovsky, PE
Garey A. Fox, PE
Jane Rossing Frankenberger
Suat Irmak, PE
Amy Kaleita, PE
Won Suk "Daniel" Lee
Shiv Om Prasher, PE
Bradley K. Rein, PE
Patricia K. Smith
Alvin R. Womac, PE
Yibin Ying

[Back to top](#)

Highlight Your Academic Program in "Explore" - Deadline Extended to June 1



Gain publicity for your program in a student-focused special issue of *Resource* magazine. We're offering [advertising packages](#) that include copies of the issue for recruitment purposes. This issue is published only every three years. See the [previous issue](#) as an example.

The issue will mail in September 2020 and focus on agricultural technology and systems management students and job newcomers. In addition to magazine subscribers, this issue is distributed via Engineers Week activities, the FFA National Convention, requests for career materials, and other outreach and is used for student recruitment purposes.

To advertise, please:

- Notify ASABE by June 1 and return this [order form](#)
- Provide the ad copy by June 15

Contact [Sandy Rutter](#) for information, phone 269/932-7004.

[Back to top](#)

ASABE Award Winners Announced

The ASABE awards program is pleased to announce the 2020 ASABE major award recipients! These individuals will be honored during a virtual ceremony during the Annual International Meeting. Details for the ceremony will be posted at

www.asabe.org when available.

MacKenzie Cline, Pharos of Alexandria Global Learning award
Abby Schaefer, Yoerger Preprofessional Engineer of the Year
Harleigh Moore, Robert E. Stewart Engineering-Humanities award
Trisha L. Moore, Gale A. Holloway Professional Development award
Adina Howe, New Holland Young Researcher
Laura Christianson, PE, Larry W. Turner Young Extension Professional
Paul C. Davidson, A.W. Farrall Young Educator
Bryan Yanke, Sunkist Young Designer
Raymond L. Huhnke, PE, John Deere Gold Medal
Manoj Karkee, Qin Zhang, Long He, Xin Zhang, Mark De Kleine "Targeted, Multi-layer Shake-and-Catch Harvesting System for Fresh Market Apples," Rain Bird Engineering Concept of the Year
Bryan M. Jenkins, James R. and Karen A. Gilley Academic Leadership award
Eric B. Smith, PE, Evelyn E. Rosentreter Standards award
Michael F. Kocher, PE, PEI Professional Engineer of the Year
Prasanta K. Kalita, Kishida International award
Dirk E. Maier, PE, Sukup Global Food Security award
Hongwei Xin, Lalit and Aruna Verma Award for Excellence in Global Engagement
Arthur T. Johnson, McCormick Case Gold Medal
Sanjay Shukla, Netafim Award for Advancements in Microirrigation
Vijay Singh, International Food Engineering award
James O. Donald, PE, Henry Giese Structures & Environment award
Ramesh Kanwar, ADS/Hancor Soil and Water Engineering award
Richard Cooke, G.B. Gunlogson Countryside Engineering award
Derek P. Whitelock, PE, Mayfield Cotton Engineering award
Gretchen A. Mosher, SMV Technologies Ergonomics, Safety and Health award
László G. Hayde, Award for the Advancement of Surface Irrigation
Bradley A. King, PE, Heermann Sprinkler Irrigation award
Mary Leigh Wolfe, Massey-Ferguson Educational Gold Medal

[Back to top](#)

New Name, Same Acclaim

Did you know. . . Student members of ASABE belong to their own membership community? Known until recently as the International Preprofessional Community, the group has acquired a new name: the International Student Branch (ISB).

Why the change? Community members believed that the previous name did not express clearly enough that the organization is meant for students. It was also anticipated the new name would unify student involvement in ASABE across the globe. The name change process began with a recommendation from the executive council and was followed by approval from the Membership Development Council.

ISB will continue to host meetings, socials, and other events at the Annual International Meeting for undergraduates and graduate students.

For any questions related to this, please, contact [Jasper Cunningham](#).

[Back to top](#)

Authors! Publish in ASABE's Peer-Reviewed Journals

Be influential worldwide. Be recognized as a respected expert in your subject matter. Improve your grant-funding opportunities with a trusted journal. ASABE works with you to improve the quality of your publication and distribute it to a worldwide audience.

Through license agreements with universities, government agencies, and companies worldwide, the full text of your ASABE journal article or meeting paper is available to a majority of individuals interested in your publication. Nearly all land

grant institutions along with many other US institutions interested in the content have access to the complete contents in the ASABE Technical Library. Similar institutions in 36 other countries also have access. Through a single agreement with China more than 1,000 institutions in that country have access. All USDA employees have access, as do similar government agencies in other countries. Major equipment companies and others interested in the content also have agreements for access to the full text. In addition, all ASABE members have access, providing interested researchers in many other small institutions and companies exposure to author's articles.

Visit our [website](#) to learn more.

[Back to top](#)

AIM 2020 Paper Upload Deadline Extended

Presenting at the ASABE 2020 Annual International Meeting? Be sure to use the [2020 paper template](#) and read the [FAQ](#) for instructions about putting your paper in the ASABE Technical Library.

- If uploaded by June 10 11:59 PM ET, paper will be online when AIM starts.
- If after June 10, paper must be emailed to [staff](#) and cannot be uploaded. Paper will be online after AIM.

And don't forget: Presenters must be registered for the meeting by the June 10 deadline noted above. Watch your email for additional details on registration and presentation requirements, including instructions for uploading video content.

[Back to top](#)

Enjoy a Discount When You Choose to Publish Your AIM Presentation with ASABE Journals

Convert your AIM presentation to a journal article and receive a publishing discount of \$100 or 10%, if over ten pages for the final layout. You must be registered for the annual meeting, present your work at the AIM, and also upload your manuscript to ScholarOne by October 1, 2020.

To submit your manuscript, please follow the [submission instructions](#). When uploading to ScholarOne, at the end of "Step 1: Type, Title, & Abstract," be sure to select the special collection "Annual International Meeting (AIM) Discount" and include in your cover letter your AIM paper number.

[Back to top](#)

VisualChallenge10



What do you see? We want to see it, too! Submit your agricultural and biological engineering images by October 5, 2020.

Now is your chance to convey and celebrate the beauty of your work, your research, or your technical community. It's up to you and your camera, so be

creative! Submit as many entries as you want. All entries should be original work, and the image resolution must be 300 dpi or greater.

E-mail your entries, as attachments to *Resource* magazine editor [Melissa Miller](#). Write *VisualChallenge10* in the subject line, and include a title and brief description for each image. If necessary, include a name for crediting the image and written

assurance that permission has been granted to submit and possibly publish the image. The best images will be selected by ASABE staff and published in the January/February 2021 issue of *Resource*. Good luck! Have fun! We'd love to see what you do! To see the winning entries from previous Visual Challenges, visit www.asabe.org/VisualChallenge.

Previous VisualChallenge entry (above) courtesy of ASABE member John Lumkes.

[Back to top](#)

Help Update Dept of Labor's Ag Engineering Occupational Description

The O*NET program, sponsored by the United States Department of Labor, is recruiting ASABE members to help update occupational information for a national database used by millions of employers, workers, educators, and students across the country. This database provides information about the skills, abilities, activities, and work context for about 900 occupations nationwide.

The project requires input from occupational experts, who usually have five or more years of experience with an occupation. They may also have experience as a supervisor or trainer as well as the expertise to rate the occupation on tasks, knowledge areas, work context factors, and work activities. Occupational experts will be asked to complete O*NET questionnaires to provide information on their field of expertise. Their contribution to this program will ensure that the occupational information provided in the O*NET database is current and accurate.

O*NET is looking for a diverse range of ASABE members to participate in their information collection efforts. Consider participating in this project if you:

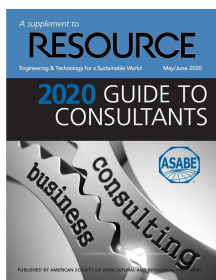
- Have at least 5 years of experience with the occupation; this time can include supervising, teaching, or training, if you have at least one year working as an agricultural engineer in your career
- Are currently active in the occupation (practicing, supervising, teaching, or training) and based in the U.S.
- Have a PE license

Find additional information about O*NET and the O*NET Data Collection Program at the following websites: www.onetonline.org and www.onetcenter.org. For additional information, please, view this [document](#).

In order to complete the questionnaire O*NET will need your name, addresses, daytime phone number, and email address. If you're interested in helping, please contact [Jasper Cunningham](#) by June 12, 2020.

[Back to top](#)

Guide to Consultants Now Available



The 2020 Guide to Consultants, a supplement of *Resource* magazine, is now available [online](#), and the print edition is included with the May/June *Resource* issue.

This concise reference helps you to find the right expertise for your project. An agricultural or biological engineering consultant offers years of experience, education, and, in most cases, professional engineering credentials.

[Back to top](#)

ASABE's Gayle Baker Subject of DiscoverE Interview

DISCOVER PRESENTS **Chats with Change Makers** ASABE

Calling all elementary & middle school students!
Join us Friday, June 12th at 12pm ET/11am CT for a chat with **Gayle**, an engineer who thinks about manure on a daily basis!

HOST Tiffany
9th grader

GUEST Gayle
Engineer

Our partner in outreach for public understanding of engineering, DiscoverE, is featuring ASABE member Gayle Baker in a recently launched video series entitled, "Chats with Changemakers." The interview will take place Friday, June 12, at noon eastern time.

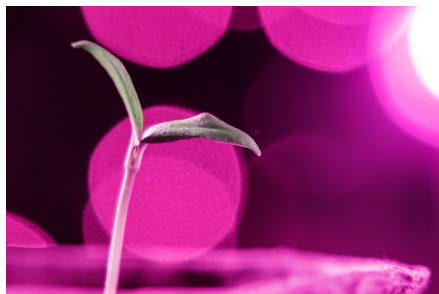
"Chats with Changemakers" introduces elementary and middle school students (and all who are curious!) to engineers who are working hard to change the world. The host is Tiffany, a current ninth-

grader from Austin, Texas, who chats with different guests from the engineering community. Participants hear their stories, ask questions, and get an inside look at how engineers use their technical skills to make the world a better place.

Sign up for the secure link. And be sure to alert the teachers and parents among your acquaintances to this great new resource.

[Back to top](#)

Committee Spotlight: ES-310



Did you know that when you log in to the ASABE website, you get exclusive access to a database of all ASABE committees, both technical and non-technical? The database also randomly spotlights one of those committees, providing a glimpse into its scope and activities.

ES-310, Energy Systems

ASABE technical committees cover a broad range of topics. One of these is ES-310, Energy Systems, which leads and coordinates the activities of ASABE in matters related to agricultural lighting systems.

Recent committee activity has focused on LEDs and other electromagnetic radiation source applications for plant growth and development. This includes wrapping up the last in a series of three standards dealing with indoor LED lighting. This final standard will cover performance measurements for electromagnetic radiation systems for plants.

The committee is also responsible for EP344.4, Lighting Systems for Agricultural Facilities, a widely used standard referenced by the Natural Resources Conservation Service in their Conservation Practice Standards.

Interested in learning more or getting involved with ES-310? Please contact Walter Brace.

[Back to top](#)

Using Zoom? Be Sure to Update Your App

Zoom is a common video-conferencing platform used by many ASABE members, and it's the platform used by ISO for technical committee work. Zoom enacted many new security features, but you need to take action to benefit from these new features.

Zoom meeting hosts and participants are reminded to check for updates regularly and note that updating to version 5.x.x is particularly important to do now as it contains many new security features.

To install the latest version, simply click on "Check for Updates" in the Zoom application. You can also download the latest version of the software.

For additional information, please see the Zoom Meetings Client [download page](#), the [Zoom 5.0 page](#), or the [Release Notes](#).

[Back to top](#)

Recent Standards Activities

Proposed Projects

- X410.3, Moisture Measurement - Peanuts
- X585.1, Animal Mortality Composting

New Standards

- ANSI/ASABE S633 MAY2020, Testing Protocol for Landscape Irrigation Soil Moisture-Based Control Technologies

Revised Standards

- ASAE S412.2 APR2020, Ladders, Cages, Walkways and Stairs
- ASAE S575.3 MAY2020, Farm and Agricultural Injury Classification (FAIC) Code
- ANSI/ASAE S583.2, Safety for Agricultural Front-End Loaders

Press Releases

- April 29, 2020, ASABE Updates Agricultural Ladder Standard
- May 14, 2020, ASABE Publishes New Test Protocol for Landscape Irrigation Devices
- May 18, 2020, ASABE Revises Classification Code for Farm and Agricultural Injuries
- May 22, 2020, ASABE Safety Standard for Agricultural Front Loaders Revised

[Back to top](#)

In Memoriam - Kenneth R. Beerwinkle

Kenneth Ray Beerwinkle passed from this life on earth to be with the Lord on Thursday, April 16, 2020. He was born April 4, 1938, to Ruben and Esther Beerwinkle in Bell County, Texas. He was the oldest of six children in a farming family. He grew up on the family farm raising cattle, sheep, hogs, and many fields of various crops. Agriculture was the center of his life beginning at age five, when his father used baling wire to attach wooden blocks so that he could reach the pedals to drive the tractor.

During his senior year, Beerwinkle competed in an agricultural mechanics essay contest through the livestock show, where he wrote about engineering an irrigation system using Belton Lake. He won the contest and earned a scholarship to attend Texas A&M College to begin his formal education to become an agricultural engineer. He was a member of the Corp of Cadets and graduated as a member of the Fightin' Texas Aggie Class of '60. Following his graduation, he was

commissioned into the United States Air Force as a vehicle maintenance officer. He served his country on active duty from 1960 to 1963, stationed at Kadena AFB in Okinawa and Reese AFB. He told many proud stories of this time in his life, but his favorite story of all time was how he met his wife, Jean, of 52 years—on a blind double-date, but she was not his date.

The couple planted roots in College Station, Texas, where Beerwinkle worked as a research engineer for the USDA, during which he earned his master's degree and PhD in agricultural engineering from Texas A&M University.

Beerwinkle was a 37-year member of ASABE. Read the full obituary in [The Eagle](#).

[Back to top](#)

In Memoriam - James Polacek

James "Jim" Polacek, 90, of Cedar Falls died Saturday, April 25, at Western Home Nation Cottage.

Polacek was born March 6, 1930, in Minneapolis, Minnesota the son of James V. and Florence Polacek. At the age of 8 he moved with his parents to the Steele County, Minn., farm which was to remain a major interest for the rest of his life. His early education was in a rural school, Pillsbury Military Academy and Owatonna High School. He graduated from the University of Minnesota with a BS degree in agricultural engineering.

He married Margie Chambers June 22, 1952, and worked for John Deere Product Engineering Center for the next 50 Years. He served two years in the Air Force, stationed in Korea.

Polacek was a 60-year member of First Presbyterian Church in Waterloo, Iowa, where he served as deacon, elder and member of the Foundation board. He was a member of SAE, ASABE, and Tau Beta Pi, and enjoyed singing for many years with the John Deere Melodeers.

Polacek was a member of ASABE for 64 years.

His official obituary is available [online](#).

[Back to top](#)



Dolores Landeck - Editor
2950 Niles Rd. St. Joseph MI 49085
phone: 269-932-7039
www.asabe.org

Inside ASABE

[Unsubscribe or update your email address.](#)

2950 Niles Rd. | St. Joseph, Michigan 49085 | USA

