

**2025**

# SPONSORSHIP OPPORTUNITIES

**FOR ACADEMIC PUBLIC HEALTH**



# ASPPH

---

The Association for Schools and Programs of Public Health (ASPPH) represents more than 150 accredited schools and programs of public health, including a community of more than 103,000 deans, faculty, staff, and students. ASPPH is the voice of academic public health – we train the next generation of public health professionals, convene leaders, generate evidence, and advocate for policies that improve the health and well-being of everyone, everywhere. We are guided by the principles of social justice and are committed to dismantling racism in academic public health institutions. ASPPH envisions a world where all people live in thriving communities supported by the work of strong and prepared public health professionals.

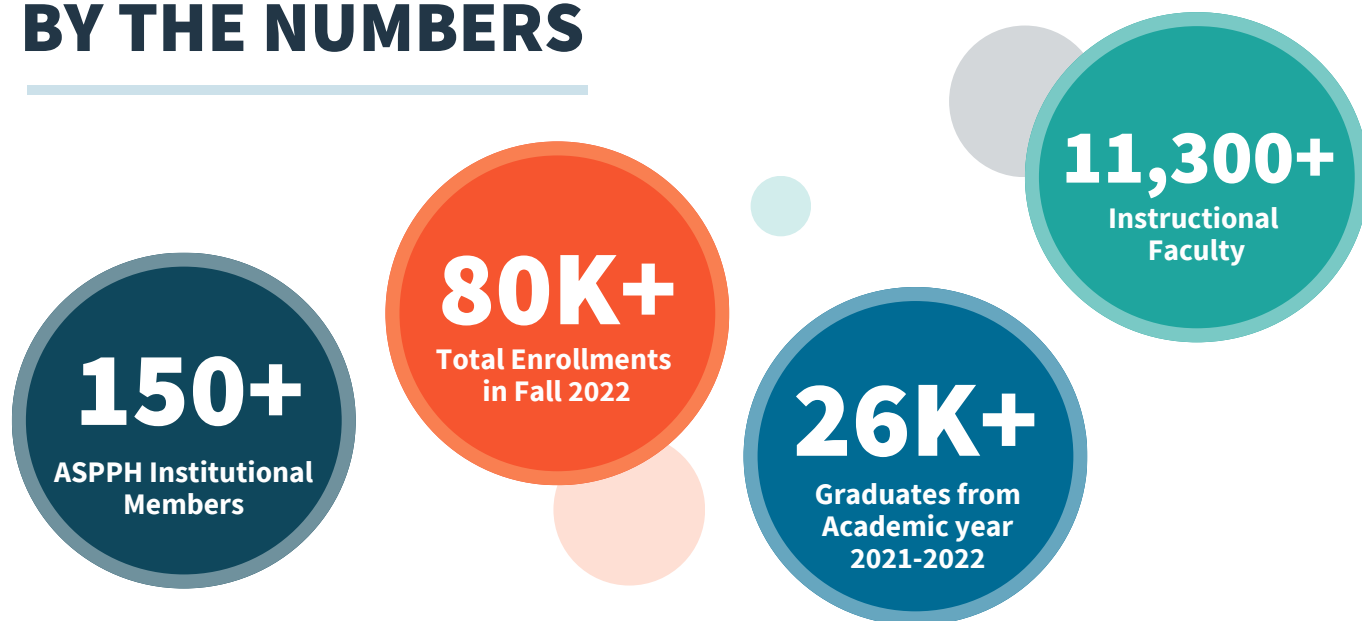
## VALUE OF COLLABORATING WITH ASPPH

---

ASPPH is built on collaboration and dedicated to improved health for everyone, everywhere. When you collaborate with ASPPH, we can continue to advance the field of public health, and showcase your organization, products, and services. Your partnership supports the power of the academic public health community as we strengthen our field through educational and mentoring opportunities, research development, systems modernization, and advocacy.

## BY THE NUMBERS

---



## ANNUAL MEETING SPONSORSHIP

# 2025 ANNUAL MEETING

MARCH 19-21 | ARLINGTON, VA

The [ASPPH Annual Meeting](#) is a unique experience of discovery and knowledge-sharing that academic public health leaders across the nation and internationally carry back to their schools and programs. Attendees are committed to improving population health through research, the translation of knowledge, and the education of a diverse community of public health professionals. The meeting includes thought-provoking topical sessions and networking opportunities to advance public health teaching, research, and practice.

## WHY SPONSOR AT ASPPH ANNUAL MEETING?



### Increased Brand Visibility

Position your brand as an industry leader by showcasing at one of the most prestigious academic public health events.

### Strategic Networking Opportunities

Forge valuable connections and leave the event with high-impact leads that can drive your business forward.



### Establish Thought Leadership

Seize the opportunity to speak or present, positioning your organization as a recognized thought leader in the field.

### Engage with the Community

Demonstrate your commitment to the public health community, building goodwill and fostering positive public relations.

**800+**  
ATTENDEES

**50+**  
SESSIONS

**250+**  
PRESENTERS

## ANNUAL MEETING SPONSORSHIP

# 2025 ANNUAL MEETING

MARCH 19-21 | ARLINGTON, VA

| SPONSORSHIP LEVEL   | GOLD<br>\$10,000 | SILVER<br>\$8,000 | BRONZE<br>\$6,000 |
|---|------------------|-------------------|-------------------|
| Recognition on the ASPPH Annual Meeting Website and Conference App  | ✓                | ✓                 | ✓                 |
| Display the ASPPH Annual Meeting Sponsorship logo on your organization's website for up to two months following the event | ✓                | ✓                 | ✓                 |
| Standard Exhibit Package  | ✓                | ✓                 | ✓                 |
| Recognition by Sponsorship Level at the Meeting   | ✓                | ✓                 | ✓                 |
| Opportunity to Include Promotional Material in Attendee Welcome Packets   | ✓                | ✓                 | ✓                 |
| Complimentary Full Conference Registration  | 3                | 2                 | 1                 |
| Social Media Promotion Through ASPPH Accounts   | 3                | 2                 | 1                 |
| Awards Luncheon Ticket(s)   | 2                | 1                 |                   |
| Recognition at the Reception and Exclusive Access to Networking Opportunities   | ✓                | ✓                 |                   |
| Plenary Session Recognition   | ✓                |                   |                   |
| ASPPH Newsletter Feature Article  | ✓                |                   |                   |

If you're interested in sponsorship and would like to explore a custom package or additional opportunities, we're happy to work with you to tailor a plan that suits your needs.

**DEADLINE: February 21, 2025**

For more information or to discuss sponsorship opportunities, please contact William Hutabarat at [SupportASPPH@aspph.org](mailto:SupportASPPH@aspph.org).

## ANNUAL MEETING SPONSORSHIP

# 2025 ANNUAL MEETING

MARCH 19-21 | ARLINGTON, VA

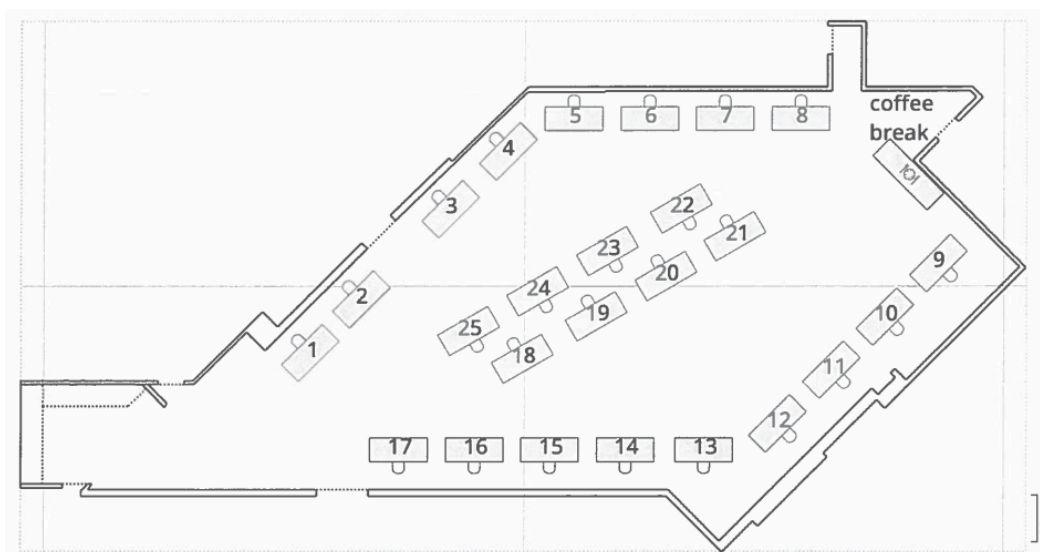
| <b>STANDARD EXHIBIT</b>   | <b>\$4,000</b><br>(NON-PROFIT - \$3,000) |
|---|--|
| Table Exhibit Space Includes 6' Draped Table, Two Chairs, and a Wastebasket | ✓  |
| Logo and Link Featured on the ASPPH Annual Meeting Website                  | ✓  |
| Two Complimentary Exhibitor-Only Registrations per Paid Booth               | ✓  |

All exhibit booth staff must be registered for the conference.

(\$2,000 deposit per booth) payment by January 31, 2025

**DEADLINE: February 21, 2025**

ASPPH Annual Meeting Layout of Exhibit Space



For more information or to discuss sponsorship opportunities, please contact William Hutabarat at [SupportASPPH@aspph.org](mailto:SupportASPPH@aspph.org).

## RETREAT SPONSORSHIP

# 2025 SECTIONS RETREAT

JUNE 25-27 | PARK CITY, UT

The [ASPPH Sections Retreat](#) is for designated representatives from ASPPH-member schools and programs of public health for Academic Affairs, Data, Diversity & Inclusion, Finance & Administration, Marketing & Communications, Practice, Research, and Student Affairs. The primary purpose of the Sections Retreat is to provide these groups with an opportunity to share promising practices; increase knowledge, discuss current issues and challenges at schools and programs of public health, and network in an open environment with their peers. Participation at the event is limited to one representative per member per track.

| SPONSORSHIP LEVEL   | GOLD<br>\$20,000 | SILVER<br>\$10,000 | BRONZE<br>\$3,000 |
|---|------------------|--------------------|-------------------|
| Recognition on the ASPPH Sections Retreat Website and Retreat App                         | ✓                | ✓                  | ✓                 |
| Recognition by Sponsorship Level at the Retreat   | ✓                | ✓                  | ✓                 |
| Banner Ad in Online Program   | ✓                | ✓                  | ✓                 |
| Opportunity to Host a Table   | ✓                | ✓                  |                   |
| Recognition in All Promotions as 2025 ASPPH Sections Retreat, Presented by [Your Company] | ✓                |                    |                   |
| Opportunity for Welcome Remarks at Opening Session  | ✓                |                    |                   |

**DEADLINE: May 30, 2025**

For more information or to discuss sponsorship opportunities, please contact William Hutabarat at [SupportASPPH@aspgh.org](mailto:SupportASPPH@aspgh.org).



**WEBINAR SPONSORSHIP**

# ASPPH PRESENTS WEBINAR

The [ASPPH Presents webinar](#) series provides a platform for exploring diverse topics in public health education, practice, and research. These webinars provide public health professionals, educators, and students with valuable opportunities to learn from experts, exchange best practices, and engage in discussions on current and emerging issues in the field.

| <b>SPONSORSHIP LEVEL</b>   | <b>\$10,000<br/>FY25* series</b> | <b>\$1,000<br/>per webinar</b> |
|--|----------------------------------|--------------------------------|
| <b>Prominent Logo Placement on the Webinar Materials</b>               | ✓                                | ✓                              |
| <b>Acknowledgement in the Webinar Introduction and Closing Remarks</b> | ✓                                | ✓                              |
| <b>Social Media Promotion Through ASPPH Accounts</b>                   | ✓                                | ✓                              |
| <b>Post-Webinar Content Promotion (e.g., recording)</b>                | ✓                                | ✓                              |

\*ASPPH’s FY25 runs from October 2024 through September 2025.

---

For more information or to discuss sponsorship opportunities, please contact William Hutabarat at [SupportASPPH@aspgh.org](mailto:SupportASPPH@aspgh.org).

## NEWSLETTER SPONSORSHIP

# ASPPH FRIDAY LETTER

The [ASPPH Friday Letter](#) is a weekly newsletter issued by the Association of Schools and Programs of Public Health (ASPPH). It is designed to provide updates, news, and important information to the public health community, including members of ASPPH and other stakeholders.



The content typically includes:

- Information about ASPPH initiatives
- Highlights from ASPPH member institutions, including achievements, research developments, and notable events
- Insights into current public health issues, policy updates, and best practices
- Information on upcoming events, webinars, and other professional development opportunities
- Announcements about job openings, funding opportunities, and other resources relevant to public health professionals

| SPONSORSHIP LEVEL   | \$3,000 per month* |
|---|--------------------|
| Placement in the Friday Letter, Ensuring Maximum Visibility | ✓                  |
| Featured on Our Social Media Promotions and Website         | ✓                  |
| Analytics Report on Advertisement Performance               | ✓                  |

\*One month is 4 weekly issues

**7,600+**  
SUBSCRIBERS

**11.45%**  
CLICK-TO-OPEN RATE

For more information or to discuss sponsorship opportunities, please contact William Hutabarat at [SupportASPPH@aspph.org](mailto:SupportASPPH@aspph.org).